

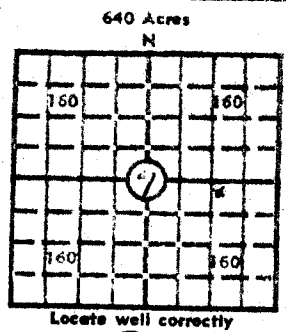
DRILLERS LOG

API No. 15 - 187 - 20146
 County Number

s. 7 T. 29S R. 39 XXXX
 Loc 2590' FSL AND 1250' FEL

County STANTON

Operator
Amoco Production Company
 Address
P. O. Box 432 - Liberal, Kansas 67901
 Well No. 2 Lease Name Montgomery G.U. "A"
 Footage Location
2590 feet from (S) line 1250 feet from (E) line
 Principal Contractor Service Drilling Company Geologist
 Spud Date 11-9-73 Total Depth 2842 P.B.T.D. 2700
 Date Completed 1-17-74 Oil Purchaser



Elev.: Gr. 3223
 DF KB 3230

CASING RECORD

Report of all strings set — surface, intermediate, production, etc.

Purpose of string	Size hole drilled	Size casing set (in O.D.)	Weight lbs/ft.	Setting depth	Type cement	Sacks	Type and percent additives
Surface	12-1/4	8-5/8	23	672	Class "H"	400	3% CACL
Production	7-7/8	5-1/2	14	2842	Special	650	18% CACL

LINER RECORD

PERFORATION RECORD

Top, ft.	Bottom, ft.	Sacks cement

Shots per ft.	Size & type	Depth interval
2	1/2	2572-79, 2588-96, 2604-10, 2624-31, 2638-54, 2660-62, 2684-94, 2707-11, 2716-22, 2725-28, 2736-46, 2758-70, 2778-90, 2810-20

TUBING RECORD

Size	Setting depth	Packer set at
2 3/8	2696	

ACID, FRACTURE, SHOT, CEMENT SQUEEZE RECORD

Amount and kind of material used	Depth interval treated
ACIDIZED w/2300gal 15% MCA AND SQUEEZED w/650 SK CEMENT	2707 - 2820
ACIDIZED w/1000gal 15% MCA AND SQUEEZED w/450 SK CEMENT	2572 - 2610
ACIDIZED w/3200gal 15% MCA AND FRACTURED w/75,000 gal WATER AND 75,000* SAND	2624 - 2694

INITIAL PRODUCTION

Date of first production 4-17-74 Producing method (flowing, pumping, gas lift, etc.) Flowing
 RATE OF PRODUCTION PER 24 HOURS
 Oil Gas Water Gas-oil ratio
 bbls. 3700 MCF bbls. CFPB
 Disposition of gas (vented, used on lease or sold) Waiting on Pipeline Connection Producing interval (s) 2624-2694

INSTRUCTIONS: As provided in KCC Rule 82-2-125, within 90 days after completion of a well, one completed copy of this Drillers Log shall be transmitted to the State Geological Survey of Kansas, 4150 Monroe Street, Wichita, Kansas 67209. Copies of this form are available from the Conservation Division, State Corporation Commission, 3830 So. Meridian (P.O. Box 17027), Wichita, Kansas 66217. Phone AC 316-522-2206. If confidential custody is desired, please note Rule 82-2-125. Drillers Logs will be on open file in the Oil and Gas Division, State Geological Survey of Kansas, Lawrence, Kansas 66044.

Well No.

2

Lease Name

MONTGOMERY GAS UNIT 'A'

S. 7 T29S R39 W

WELL LOG

Show all important zones of porosity and contents thereof; cored intervals, and all drill-stem tests, including depth interval tested, cushion used, time tool open, flowing and shut-in pressures, and recoveries.

SHOW GEOLOGICAL MARKERS, LOGS RUN, OR OTHER DESCRIPTIVE INFORMATION.

FORMATION DESCRIPTION, CONTENTS, ETC.

TOP

BOTTOM

NAME

DEPTH

SAND, RED BED

0

660

GAMMA RAY
NEUTRON

1300-2841

RED BED,

660

1425

SAND, SHALE, ANHY.

1425

1728

SAND, SHALE

1728

2247

SHALE, LIME

2247

2557

LIME, SHALE

2557

2572

SAND, LIME, SILT

2572

2736

LIME, SHALE, SILT

2736

2776

LIME, SILT

2776

2842

Test Info: 24 Hr. SIP 272
20 Min. Open Flow 3.7 MMCFD

USE ADDITIONAL SHEETS, IF NECESSARY, TO COMPLETE WELL RECORD.

Date Received



R. W. Banks

Signature

R. W. BANKS
~~XXXXXXXXXXXX~~

Area Administrative Supervisor ASSISTANT

Title

7-1-74

Date