

100110443

PRELIMINARY REPORT

CORE LABORATORIES, INC.
OKLAHOMA CITY, OKLAHOMA

FULL DIAMETER
CORE ANALYSIS RESULTS

Checked By 11/29/73.

AMOCO PRODUCTION COMPANY
MONTGOMERY GAS UNIT "A" NO. 2
PANOMA FIELD
STANTON COUNTY, KANSAS

FORMATION: COUNCIL GROVE
DRLG. FLUID: WATER BASE MUD
ELEVATION: 3230' K. B
LOCATION: 2590' FSL - 1250' FEL

API WELL NO.			
State	County	Tract	S
15	18	29	14600

DATE: 11-15-73
FILE NO: 3402-7913
ENGR: BOYLE

CENTRAL FILES-CORE BOOK

SAMPLE NO.	DEPTH INTERVAL FEET	PERMEABILITY - MD.		POROSITY PER CENT	FLUID SATS.		GRAIN DEN.	DESCRIPTION
		MAX.	90		OIL	WATER		
1	2557.00-58.00	196	28	5.4	2.70		LM S/SHY VF	
2	2558.00-59.00	82	21	5.1	2.71		LM SHY VF	
3	2559.00-60.00	<0.1	<0.1	4.0	2.69		LM S/SHY	
4	2560.00-61.00	<0.1	<0.1	4.6	2.69		LM S/SHY	
5	2561.00-62.00	.1	<0.1	6.0	2.70		LM	
6	2562.00-63.00	<0.1	<0.1	5.3	2.69		LM S/SHY	
7	2563.00-64.00	.2	.1	4.1	2.71		LM S/SHY	
8	2564.00-65.00	<0.1	<0.1	4.3	2.70		LM S/SHY	
9	2565.00-66.00	.3	<0.1	6.6	2.73		LM VF	
10	2566.00-67.00	.2	<0.1	5.5	2.72		LM S/SHY VF	
11	2567.00-68.00	*	<0.1	10.8	2.71		SLT SHY S/LMY VF +	
12	2568.00-69.00	.2	<0.1	10.2	2.65		SD SLTY S/LMY	
13	2569.00-70.00	.5	.5	14.2	2.69		SD SLTY S/LMY	
14	2570.00-71.00	1.6	1.6	16.9	2.69		SD SLTY S/LMY	
15	2571.00-72.00	4.7	4.4	19.5	2.70		SD SLTY +	
16	2572.00-73.00	1.8	1.2	18.2	2.71		SD SLTY +	
17	2573.00-74.00	.3	.2	15.6	2.72		SD SLTY +	
18	2574.00-75.00	.7	.7	16.9	2.72		SD SLTY	
19	2575.00-76.00	.3	.2	15.1	2.70		SD SLTY	
20	2576.00-77.00	.1	.1	10.6	2.65		SD SLTY	
21	2577.00-78.00	*	.9	14.4	2.72		SLT SHY LMY +	
22	2578.00-79.00	.3	.3	10.3	2.69		SD V/SLTY LMY	
23	2579.00-80.00	38	.8	7.5	2.67		SD V/SLTY LMY +	
24	2580.00-81.00	1.2	.2	7.0	2.67		SLT LMY S/SHY +	
25	2581.00-82.00	50	26	10.8	2.71		SLT SHY LMY +	
26	2582.00-83.00	*	<0.1	13.0	2.68		SLT SHY	
27	2583.00-84.00	*	<0.1	13.2	2.69		SLT SHY LMY	
28	2584.00-85.00	.7	.1	6.0	2.69		LM VF	
29	2585.00-86.00	5.8	5.1	15.4	2.71		LM VF	
30	2586.00-87.00	7.8	7.6	17.3	2.72		LM S/ANH	

CORE LABORATORIES, INC.
OKLAHOMA CITY, OKLAHOMA

FULL DIAMETER
CORE ANALYSIS RESULTS

11/29/73.

PAGE 2

AMOCO PRODUCTION COMPANY
MONTGOMERY GAS UNIT "A" NO. 2

FORMATION: COUNCIL GROVE
FIELD: PANOMA FIELD

DATE: 11-15-73
FILE NO. 3402-7913

SAMPLE NO.	DEPTH INTERVAL FEET	PERMEABILITY - MD.		POROSITY PER CENT	FLUID SATS.		GRAIN DEN.	DESCRIPTION
		MAX.	90		OIL	WATER		
31	2587.00-88.00	2.2	2.0	12.0			2.75	LM S/ANH
32	2588.00-89.00	.9	.9	8.1			2.76	LM ANH
33	2589.00-90.00	1.0	.2	8.1			2.75	LM S/SHY S/ANH
34	2590.00-91.00	.1	<0.1	6.6			2.73	LM S/SHY S/ANH
35	2591.00-92.00	4.5	3.2	6.2			2.74	SLT V/LMY +
36	2592.00-93.00	63	38	7.6			2.73	LM SLTY +
37	2593.00-94.00	41	34	7.6			2.74	LM SLTY +
38	2594.00-95.00	105	101	8.9			2.73	LM SLTY +
39	2595.00-96.00	29	16	7.5			2.72	LM SHY ANH +
40	2596.00-97.00	<0.1	<0.1	2.6			2.69	LM S/SHY
41	2597.00-98.00	1.0	.1	2.4			2.69	LM S/SHY VF
42	2598.00-99.00	32	27	6.2			2.71	LM SHY +
43	2599.00- 0.	17	11	5.2			2.70	LM SHY +
44	2600.00- 1.00	.2	.2	9.2			2.72	LM S/ANH
45	2601.00- 2.00	.7	.7	12.4			2.71	LM
46	2602.00- 3.00	.8	.7	12.6			2.72	LM
47	2603.00- 4.00	.6	.5	12.1			2.74	LM
48	2604.00- 5.00	.6	.4	11.7			2.71	LM
49	2605.00- 6.00	.8	.5	11.7			2.71	LM
50	2606.00- 7.00	.2	.2	5.1			2.71	LM SHY
51	2607.00- 8.00	57	7.9	5.5			2.70	LM SHY VF +
52	2608.00- 9.00	23	5.3	7.6			2.71	SLT SHY LMY ANH +
53	2609.00-10.00	47	35	7.4			2.72	SLT SHY LMY ANH +
54	2610.00-11.00	*	<0.1	9.9			2.68	SLT SHY LMY
55	2611.00-12.00	*	<0.1	11.5			2.69	SLT SHY LMY
56	2612.00-13.00	*	<0.1	10.6			2.69	SLT SHY LMY
57	2613.00-14.00	*	<0.1	10.3			2.73	SLT SHY LMY
58	2614.00-15.00	8.0	4.3	4.3			2.68	LM SHY +
59	2615.00-16.00	1099	4.2	5.0			2.68	LM SHY VF
60	2616.00-17.00	*	<0.1	10.8			2.70	SLT LMY V/SHY
61	2617.00-18.00	1.4	.6	4.2			2.69	LM V/SHY S/SLTY +
62	2618.00-19.00	3.2	1.3	4.0			2.68	LM SHY S/SLTY +

AMOCO PRODUCTION COMPANY
MONTGOMERY GAS UNIT "A" NO. 2

FORMATION: COUNCIL GROVE
FIELD: PANOMA FIELD

DATE: 11-15-73
FILE NO. 3402-7913

SAMPLE NO.	DEPTH INTERVAL FEET	PERMEABILITY - MD.		POROSITY PER CENT	FLUID SATS.		GRAIN DEN.	DESCRIPTION
		MAX.	90		OIL	WATER		
63	2619.00-20.00	.2	<0.1	3.3			2.66	LM SHY S/ANH +
64	2620.00-21.00	*	<0.1	7.1			2.71	LM V/SHY S/ANH
65	2621.00-22.00	*	<0.1	8.2			2.71	SLT V/SHY V/LMY
66	2622.00-23.00	13	6.9	7.2			2.70	SLT LMY +
67	2623.00-24.00	2.3	1.9	9.1			2.69	SLT LMY +
68	2624.00-25.00	3.8	3.2	8.5			2.69	SLT LMY +
69	2625.00-26.00	.3	.2	8.0			2.69	SLT LMY
70	2626.00-27.00	.2	.2	7.9			2.68	SLT LMY +
71	2627.00-28.00	.3	.2	9.9			2.68	SLT LMY
72	2628.00-29.00	29	2.7	7.3			2.69	SLT SHY LMY +
73	2629.00-30.00	*	<0.1	20.5			2.66	SLT V/SHY S/LMY
74	2630.00-31.00	*	<0.1	9.3			2.67	SLT V/SHY S/LMY
75	2631.00-32.00	16	7.6	8.0			2.68	SLT V/SHY S/LMY +
	2632.00-36.00		SHALE					
76	2636.00-37.00	<0.1	<0.1	8.7			2.71	LM SLTY
77	2637.00-38.00	.3	.2	8.4			2.69	SLT LMY +
78	2638.00-39.00	8.9	.3	9.2			2.70	SLT SHY LMY +
79	2639.00-40.00	.4	.4	11.1			2.69	SLT SHY LMY +
80	2640.00-41.00	27	18	11.6			2.70	SLT SHY LMY +
81	2641.00-42.00	1.7	1.6	14.1			2.69	SLT SHY LMY
82	2642.00-43.00	50	21	13.5			2.71	SLT SHY LMY +
83	2643.00-44.00	2.2	1.1	13.1			2.70	SLT V/SHY S/LMY +
84	2644.00-45.00	1.2	.6	12.1			2.70	SLT V/SHY LMY +
85	2645.00-46.00	13	10	14.5			2.71	SLT V/SHY LMY +
86	2646.00-47.00	48	13	13.9			2.69	SLT V/SHY LMY +
87	2647.00-48.00	17	16	12.0			2.70	SLT V/SHY LMY +
88	2648.00-49.00	29	22	13.3			2.70	SLT V/SHY LMY +
89	2649.00-50.00	3.6	2.7	12.2			2.70	SLT V/SHY LMY +
90	2650.00-51.00	.1	<0.1	10.6			2.70	SLT V/SHY LMY
91	2651.00-51.50	150	41	10.8			2.72	SLT V/SHY LMY +

AMOCO PRODUCTION COMPANY
MONTGOMERY GAS UNIT "A" NO. 2

FORMATION: COUNCIL GROVE
FIELD: PANOMA FIELD

DATE: 11-15-73
FILE NO. 3402-7913

SAMPLE NO.	DEPTH INTERVAL FEET	PERMEABILITY - MD.		POROSITY PER CENT	FLUID SATS.		GRAIN DEN.	DESCRIPTION
		MAX.	90		OIL	WATER		
	2651.50-52.00			LOST CORE				
92	2652.00-53.00	1.2	.7	11.0			2.69	SLT SHY LMY +
93	2653.00-54.00	.4	.4	10.9			2.68	SLT SHY LMY
94	2654.00-55.00	.6	.5	10.8			2.69	SLT SHY S/LMY
95	2655.00-56.00	.3	.3	10.5			2.69	SLT SHY S/LMY
96	2656.00-57.00	.3	.3	5.8			2.67	LM SHY V/SLTY
97	2657.00-58.00	<0.1	<0.1	3.0			2.71	LM V/SHY SLTY
98	2658.00-59.00	1.9	1.1	2.7			2.73	LM SHY +
99	2659.00-60.00	1.7	<0.1	2.5			2.70	LM SHY S/SLTY +
100	2660.00-61.00	*	<0.1	6.5			2.72	SLT V/SHY LMY +
101	2661.00-62.00	.8	.7	2.3			2.74	LM SHY +
102	2662.00-63.00	<0.1	<0.1	1.1			2.73	LM VF
103	2663.00-64.00	41	17	6.0			2.71	SLT V/SHY LMY +
104	2664.00-65.00	6.7	4.9	5.9			2.67	SLT LMY +
105	2665.00-66.00	77	43	10.2			2.66	SLT V/SHY S/LMY +
106	2666.00-67.00	5.2	2.4	5.4			2.69	SLT V/SHY LMY +
107	2667.00-68.00	11	9.3	6.0			2.70	SLT V/SHY LMY +
108	2668.00-69.00	*	<0.1	8.4			2.73	SLT V/SHY LMY +
109	2669.00-70.00	*	<0.1	13.0			2.71	SH SLTY +
110	2670.00-71.00	*	<0.1	7.6			2.70	SLT V/SHY +
111	2671.00-72.00	*	<0.1	4.4			2.67	SH SLTY +
112	2672.00-73.00	22	21	10.3			2.73	LM V/SHY SLTY +
113	2673.00-74.00	.1	<0.1	9.4			2.65	SLT V/SHY LMY +
114	2674.00-75.00	<0.1	<0.1	11.6			2.70	SLT SHY LMY
115	2675.00-76.00	12	5.7	8.6			2.70	SLT V/SHY LMY +
116	2676.00-77.00	*	<0.1	9.0			2.65	SH SLTY LMY +
117	2677.00-78.00	*	<0.1	4.0			2.73	LM V/SHY
118	2678.00-79.00	.2	<0.1	1.3			2.72	LM S/SHY
119	2679.00-80.00	<0.1	<0.1	1.1			2.70	LM VF
120	2680.00-81.00	<0.1	<0.1	1.4			2.70	LM S/SHY S/ANH VF +

AMOCO PRODUCTION COMPANY
MONTGOMERY GAS UNIT "A" NO. 2

FORMATION: COUNCIL GROVE
FIELD: PANOMA FIELD

DATE: 11-15-73
FILE NO. 3402-7913

SAMPLE NO.	DEPTH INTERVAL FEET	PERMEABILITY - MD.		POROSITY PER CENT	FLUID SATS.		GRAIN DEN.	DESCRIPTION
		MAX.	90		OIL	WATER		
121	2681.00-82.00	.3	.2	3.0			2.73	LM VF
122	2682.00-83.00	15	3.3	4.0			2.75	LM S/SHY VF +
123	2683.00-84.00	.2	.1	3.1			2.73	LM SHY VF +
124	2684.00-85.00	1.5	.3	9.4			2.71	SLT LMY VF +
125	2685.00-86.00	15	.7	13.4			2.67	SD SHY SLTY S/LMY
126	2686.00-87.00	.1	<0.1	10.0			2.67	SD S/SHY SLTY S/LMY
127	2687.00-88.00	.2	.2	12.9			2.69	SD SHY SLTY S/LMY +
128	2688.00-89.00	.6	.2	8.6			2.66	SLT SHY S/LMY +
129	2689.00-90.00	2.2	.6	7.8			2.66	SLT SHY S/LMY/ANH +
130	2690.00-91.00	<0.1	<0.1	8.5			2.66	SLT SHY S/LMY/ANH +
131	2691.00-92.00	.2	.1	15.2			2.73	SD SLT S/SHY/LMY/ANH
132	2692.00-93.00	<0.1	<0.1	9.3			2.69	SLT SHY S/LMY
133	2693.00-94.00	72	44	9.1			2.67	SLT V/SHY LM S/ANH +
134	2694.00-95.00	1.0	.7	8.4			2.69	SLT SHY LMY S/ANH +
135	2695.00-96.00	.1	.1	6.7			2.67	SLT SHY LMY +
136	2696.00-97.00	<0.1	<0.1	8.4			2.71	SD S/SHY SLTY LMY
137	2697.00-98.00	<0.1	<0.1	8.7			2.71	SLT SHY LMY +
138	2698.00-99.00	82	13	6.6			2.69	SLT V/SHY LMY +
139	2699.00- 0.	*	<0.1	12.9			2.72	SLT V/SHY LMY +
140	2700.00- 1.00	*	<0.1	10.6			2.68	SLT V/SHY LMY +
141	2701.00- 2.00	<0.1	<0.1	4.3			2.71	LM SHY S/ANH VF
142	2702.00- 3.00	8.9	.2	6.5			2.74	LM SHY S/SLTY/ANH VF
143	2703.00- 4.00	<0.1	<0.1	6.1			2.73	LM SHY SLTY S/ANH
144	2704.00- 5.00	.1	.1	11.0			2.67	SD SLT LMY S/SHY/ANH
145	2705.00- 6.00	.3	<0.1	10.7			2.68	SLT SHY LMY S/ANH +
146	2706.00- 7.00	.1	<0.1	10.2			2.68	SLT SHY LMY +
147	2707.00- 8.00	<0.1	<0.1	11.1			2.72	SD SLTY LMY S/SHY
148	2708.00- 9.00	172	160	11.5			2.70	SLT V/SHY +
	2709.00-10.00		LOST CORE					
149	2710.00-11.00	3.7	.6	8.8			2.67	SLT LMY +

AMOCO PRODUCTION COMPANY
MONTGOMERY GAS UNIT "A" NO. 2

FORMATION: COUNCIL GROVE
FIELD: PANOMA FIELD

DATE: 11-15-73
FILE NO. 3402-7913

SAMPLE NO.	DEPTH INTERVAL FEET	PERMEABILITY - MD.		POROSITY PER CENT	FLUID SATS.		GRAIN DEN.	DESCRIPTION
		MAX.	90		OIL	WATER		
150	2711.00-12.00	.9	.8	15.4			2.70	SLT S/LMY +
151	2712.00-13.00	1.4	1.3	9.7			2.70	SD SLTY LMY
152	2713.00-14.00	1.1	1.0	16.4			2.70	SD SLTY S/LMY
153	2714.00-15.00	.2	.2	17.5			2.71	SD SLTY LMY S/SHY +
154	2715.00-16.00	.2	.2	13.8			2.73	SD SLTY LMY
155	2716.00-17.00	<0.1	<0.1	11.8			2.71	SD SLTY S/SHY/LMY +
156	2717.00-18.00	.1	<0.1	9.4			2.69	SLT LMY +
157	2718.00-19.00	*	<0.1	11.5			2.66	SLT V/SHY LMY +
158	2719.00-20.00	1.0	.1	4.7			2.72	LM ANH
159	2720.00-21.00	13	10	3.6			2.76	LM S/ANH VF
160	2721.00-22.00	<0.1	<0.1	2.9			2.70	LM S/ANH
161	2722.00-23.00	.1	<0.1	12.5			2.72	SLT V/SHY LMY +
162	2723.00-24.00	.1	<0.1	10.3			2.69	SLT V/SHY LM S/ANH +
163	2724.00-25.00	*	<0.1	13.0			2.67	SLT V/SHY LMY +
164	2725.00-26.00	*	<0.1	12.1			2.72	SLT V/SHY LMY +
165	2726.00-27.00	*	<0.1	18.4			2.73	SLT V/SHY LMY +
166	2727.00-28.00	*	<0.1	14.6			2.76	SLT V/SHY +
167	2728.00-29.00	*	<0.1	13.0			2.73	SLT V/SHY +
168	2729.00-30.00	*	<0.1	17.3			2.76	SLT V/SHY +
169	2730.00-31.00	.1	.1	1.3			2.70	LM V/SHY
170	2731.00-32.00	1.8	1.5	11.0			2.71	LM
171	2732.00-33.00	3.5	3.5	11.5			2.70	LM S/ANH VF
172	2733.00-34.00	5.1	2.4	13.1			2.77	LM ANH VF
173	2734.00-35.00	3.4	2.8	15.8			2.74	LM ANH VF
174	2735.00-36.00	2.9	2.6	15.1			2.75	LM ANH
175	2736.00-37.00	2.9	2.7	14.2			2.75	LM ANH
176	2737.00-38.00	1.9	1.6	11.6			2.75	LM ANH
177	2738.00-39.00	1.9	1.0	12.7			2.74	LM ANH
178	2739.00-40.00	.9	.7	11.9			2.71	LM ANH
179	2740.00-41.00	1.5	.8	10.0			2.70	LM VF
180	2741.00-42.00	.4	<0.1	3.9			2.71	LM CHT VF
181	2742.00-43.00	.2	.1	3.3			2.69	LM VF

AMOCO PRODUCTION COMPANY
MONTGOMERY GAS UNIT "A" NO. 2

FORMATION: COUNCIL GROVE
FIELD: PANOMA FIELD

DATE: 11-15-73
FILE NO. 3402-7913

SAMPLE NO.	DEPTH INTERVAL FEET	PERMEABILITY - MD.		POROSITY PER CENT	FLUID SATS.		GRAIN DEN.	DESCRIPTION
		MAX.	90		OIL	WATER		
182	2743.00-44.00	<0.1	<0.1	2.1			2.69	LM VF
	2744.00-55.00		SHALE					
183	2755.00-56.00	215	120	9.3			2.63	SLT V/SHY LMY +
184	2756.00-57.00	176	5.7	12.2			2.73	SLT V/SHY LMY +
185	2757.00-58.00	22	5.6	7.2			2.72	SLT V/SHY LMY +
186	2758.00-59.00	26	17	7.0			2.69	SLT V/SHY LMY +
187	2759.00-60.00	85	31	9.6			2.74	SLT V/SHY LMY +
188	2760.00-61.00	96	96	11.6			2.76	SLT V/SHY LMY +
189	2761.00-62.00	1205	34	7.3			2.74	SLT V/SHY LMY +
190	2762.00-63.00	11	1.6	8.0			2.72	SLT V/SHY LMY +
191	2763.00-64.00	36	23	9.0			2.73	SLT V/SHY LMY +
192	2764.00-65.00	75	53	11.3			2.74	SLT V/SHY LMY +
193	2765.00-66.00	31	18	9.5			2.73	SLT V/SHY LMY +
194	2766.00-67.00	*	<0.1	8.7			2.70	SLT V/SHY LMY +
195	2767.00-68.00	68	46	9.2			2.70	SLT V/SHY LMY +
196	2768.00-69.00	42	40	11.3			2.73	SLT V/SHY LMY +
197	2769.00-70.00	39	32	8.6			2.69	SLT V/SHY LMY +
198	2770.00-71.00	27	19	7.2			2.68	SLT V/SHY LMY +
199	2771.00-72.00	8.9	2.0	6.9			2.73	LM SHY +
200	2772.00-73.00	<0.1	<0.1	1.3			2.74	LM S/SHY S/ANH
201	2773.00-74.00	7.6	.6	8.1			2.71	LM VF
202	2774.00-75.00	.1	<0.1	3.6			2.69	LM VF
203	2775.00-76.00	5.3	.4	2.7			2.70	LM SHY +
204	2776.00-77.00	.8	<0.1	2.5			2.70	LM SHY +
205	2777.00-78.00	<0.1	<0.1	2.5			2.70	LM SHY +
206	2778.00-79.00	<0.1	<0.1	3.2			2.71	LM SHY VF
207	2779.00-80.00	9.1	.1	3.5			2.72	LM S/SHY STY VF
208	2780.00-81.00	16	16	5.2			2.72	LM V/SHY +
209	2781.00-82.00	11	9.7	5.0			2.72	LM V/SHY +
210	2782.00-83.00	<0.1	<0.1	1.6			2.69	LM VF

AMOCO PRODUCTION COMPANY
MONTGOMERY GAS UNIT "A" NO. 2

FORMATION: COUNCIL GROVE
FIELD: PANOMA FIELD

DATE: 11-15-73
FILE NO. 3402-7913

SAMPLE NO.	DEPTH INTERVAL FEET	PERMEABILITY - MD.		POROSITY PER CENT	FLUID SATS.		GRAIN DFN.	DESCRIPTION
		MAX.	90		OIL	WATER		
211	2783.00-84.00	<0.1	<0.1	2.7			2.70	LM SHY +
212	2784.00-85.00	.1	<0.1	2.4			2.69	LM SHY +
213	2785.00-86.00	<0.1	<0.1	2.6			2.68	LM S/SHY +
214	2786.00-87.00	7.1	1.4	6.2			2.72	LM V/SHY +
	2787.00-88.00		SHALE					
215	2788.00-89.00	16	15	4.6			2.71	LM V/SHY +
216	2789.00-90.00	.3	<0.1	2.2			2.68	LM SHY +
217	2790.00-91.00	.3	.3	2.5			2.65	LM CHI VF
218	2791.00-92.00	<0.1	<0.1	3.3			2.69	LM CHI VF +
219	2792.00-93.00	11	11	2.9			2.68	LM SHY VF +
220	2793.00-94.00	165	.1	3.3			2.71	LM SHY VF +
221	2794.00-95.00	21	20	5.1			2.71	LM V/SHY +
222	2795.00-96.00	<0.1	<0.1	1.5			2.70	LM SHY
223	2796.00-97.00	.4	.4	2.7			2.69	LM SHY +
224	2797.00-98.00	83	.9	3.3			2.71	LM SHY VF
225	2798.00-99.00	<0.1	<0.1	3.2			2.71	LM S/SHY VF
226	2799.00- 0.	75	64	8.0			2.72	LM SLTY SDY +
227	2800.00- 1.00	67	47	8.6			2.75	LM SLTY SHY +
228	2801.00- 2.00	*	.1	11.6			2.75	SLT SHY LMY +
229	2802.00- 3.00	2.4	<0.1	4.2			2.73	LM S/SLTY S/SHY
230	2803.00- 4.00	.1	<0.1	1.4			2.72	LM S/DOL VF
231	2804.00- 5.00	<0.1	<0.1	13.4			2.79	DOL SLTY LMY
232	2805.00- 6.00	<0.1	<0.1	16.1			2.75	SLT DOL
233	2806.00- 7.00	<0.1	<0.1	17.7			2.79	SLT DOL +
234	2807.00- 8.00	<0.1	<0.1	14.4			2.72	SLT +
235	2808.00- 9.00	1.6	<0.1	15.9			2.76	SLT DOL +
236	2809.00-10.00	17	3.3	11.1			2.70	SLT LMY S/ANH +
237	2810.00-11.00	194	141	11.6			2.74	SLT LMY +
238	2811.00-12.00	28	16	8.5			2.72	SLT LMY +
239	2812.00-13.00	131	119	9.5			2.71	SLT LMY +

AMOCO PRODUCTION COMPANY
MONTGOMERY GAS UNIT "A" NO. 2

FORMATION: COUNCIL GROVE
FIELD: PANOMA FIELD

DATE: 11-15-73
FILE NO. 3402-7913

SAMPLE NO.	DEPTH INTERVAL FEET	PERMEABILITY - MD.		POROSITY PER CENT	FLUID SATS.		GRAIN DEN.	DESCRIPTION
		MAX.	90		OIL	WATER		
240	2813.00-14.00	27	20	7.5			2.70	SLT LMY +
241	2814.00-15.00	22	17	8.4			2.67	SLT LMY +
242	2815.00-16.00	71	66	13.7			2.74	SLT SHY LMY +
243	2816.00-17.00	.9	.4	7.1			2.68	SLT LMY +
244	2817.00-18.00	<0.1	<0.1	10.2			2.69	SLT LMY S/ANH +
245	2818.00-19.00	.1	<0.1	11.3			2.71	SLT LMY ANH +
246	2819.00-20.00	1.9	.4	12.0			2.71	SLT LMY S/ANH +
247	2820.00-21.00	3.4	.5	10.9			2.72	SLT SHY LMY ANH +
248	2821.00-22.00	15	5.8	13.4			2.75	SLT V/SHY LMY +
249	2822.00-23.00	*	<0.1	13.6			2.70	SLT V/SHY LMY +
250	2823.00-24.00	*	<0.1	11.7			2.67	SLT V/SHY LMY ANH +
251	2824.00-25.00	*	<0.1	8.0			2.69	SLT V/SHY LMY ANH +
252	2825.00-26.00	*	.1	8.8			2.72	SLT V/SHY LMY +
253	2826.00-27.00	28	5.1	7.8			2.72	LM V/SLTY V/SHY +
254	2827.00-28.00	.2	.1	9.3			2.69	LM V/SLTY V/SHY +
	2828.00-29.00							SHALE
255	2829.00-30.00	<0.1	<0.1	5.2			2.71	LM S/ANH
256	2830.00-31.00	7.3	3.7	4.1			2.73	LM SHY
257	2831.00-32.00	1.8	.8	3.5			2.75	LM SHY
258	2832.00-33.00	.4	.3	3.8			2.74	LM SHY
259	2833.00-34.00	3.1	.9	3.3			2.73	LM SHY
260	2834.00-35.00	7.1	<0.1	3.3			2.72	LM VF
261	2835.00-36.00	34	<0.1	5.9			2.74	LM S/SHY STY VF
262	2836.00-37.00	.1	<0.1	7.1			2.76	LM DOL S/ANH STY
263	2837.00-38.00	<0.1	<0.1	10.9			2.78	LM DOL
264	2838.00-39.00	<0.1	<0.1	11.8			2.78	LM DOL
265	2839.00-40.00	<0.1	<0.1	10.7			2.77	LM DOL STY
266	2840.00-41.00	.4	<0.1	8.9			2.76	LM DOL VF
267	2841.00-42.00	.2	<0.1	3.0			2.70	LM STY

* DENOTES PLUG PERMEABILITY



CORE LABORATORIES, INC.

Petroleum Reservoir Engineering

COMPANY AMOCO PRODUCTION COMPANY FIELD PANOMA FILE 3402-7913
 WELL MONTGOMERY GAS UNIT "A" NO. 2 COUNTY STANTON DATE 11-15-73
 LOCATION 2590'FSL-1250'FEL STATE KANSAS ELEV. 3230' K. B.
SEC 7-T29S-R39W

CORE-GAMMA CORRELATION

These analyses, opinions or interpretations are based on observations and material supplied by the client to whom, and for whose exclusive and confidential use, this report is made. The interpretations or opinions expressed represent the best judgment of Core Laboratories, Inc. (all errors and omissions excepted), but Core Laboratories, Inc. and its officers and employees, assume no responsibility and make no warranty or representations as to the productivity, proper operation, or profitability of any oil, gas or other mineral well or sand in connection with which such report is used or relied upon.

VERTICAL SCALE: 5" = 100'

CORE-GAMMA SURFACE LOG (PATENT APPLIED FOR)

GAMMA RAY
RADIATION INCREASE →

Binomial Data Averages
Used for plots

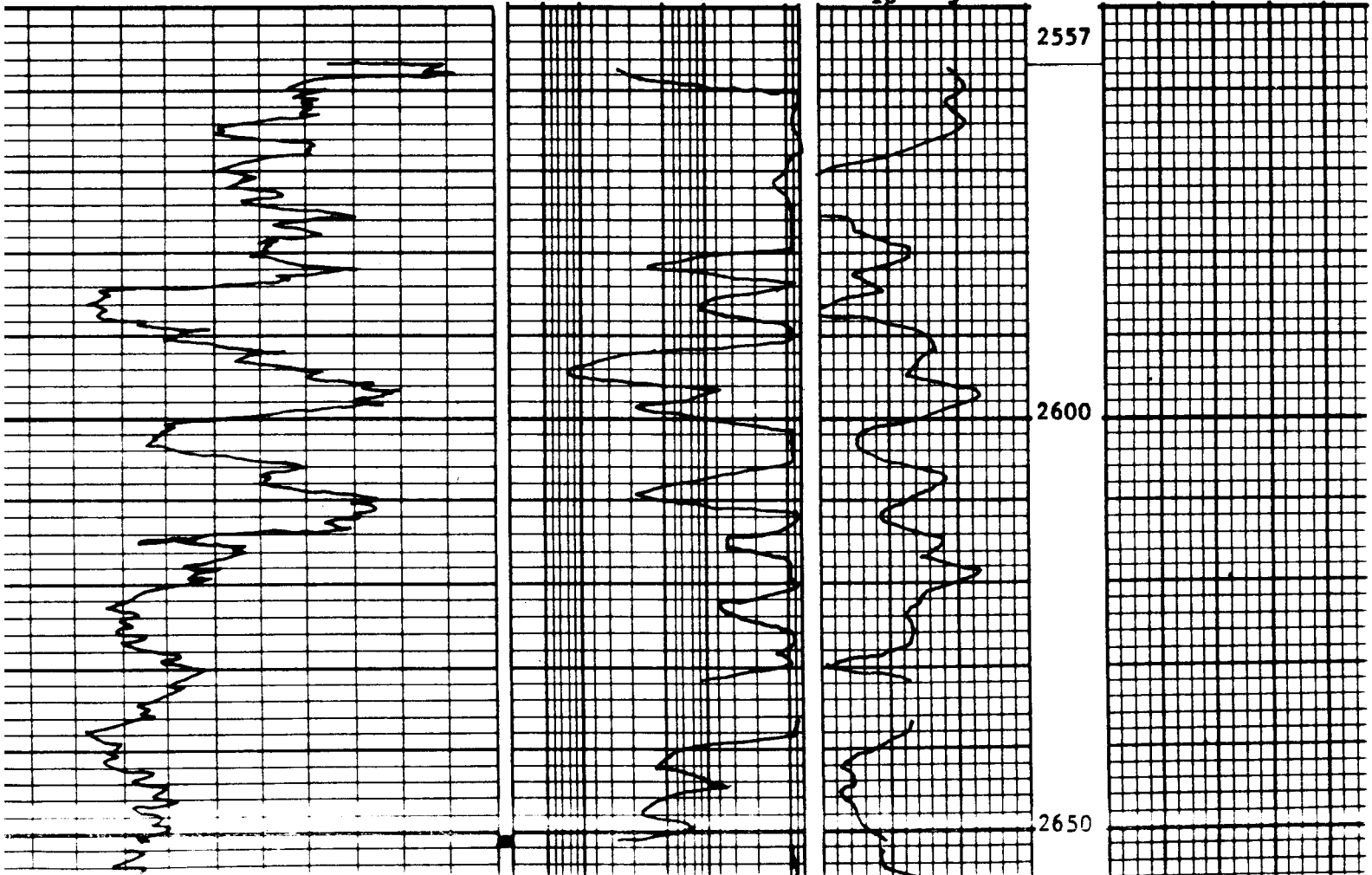
COREGRAPH

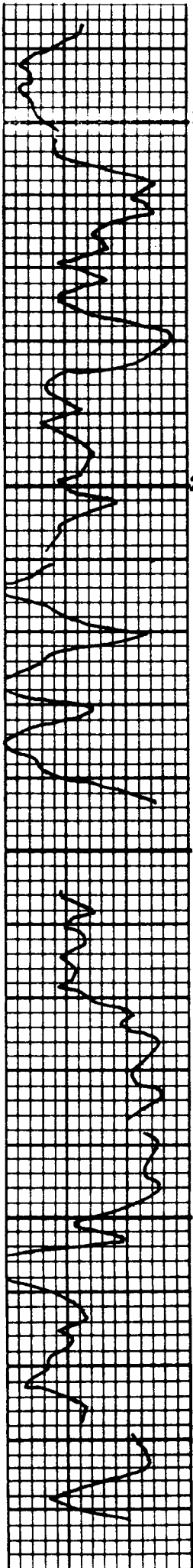
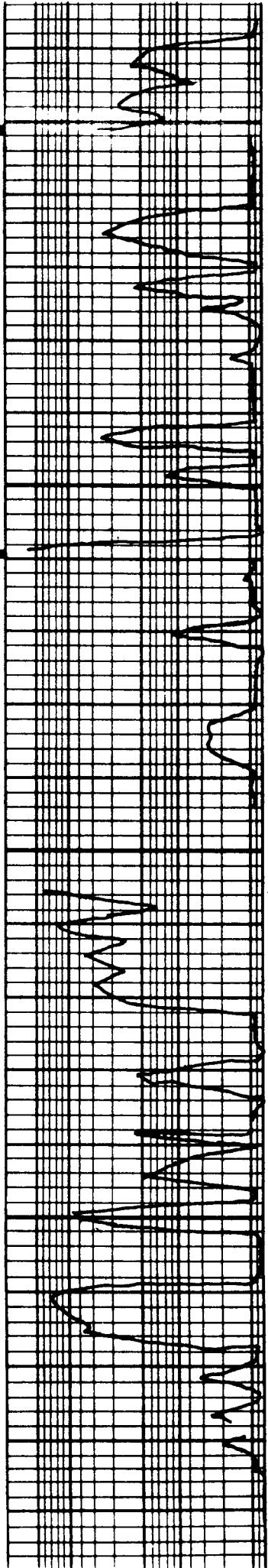
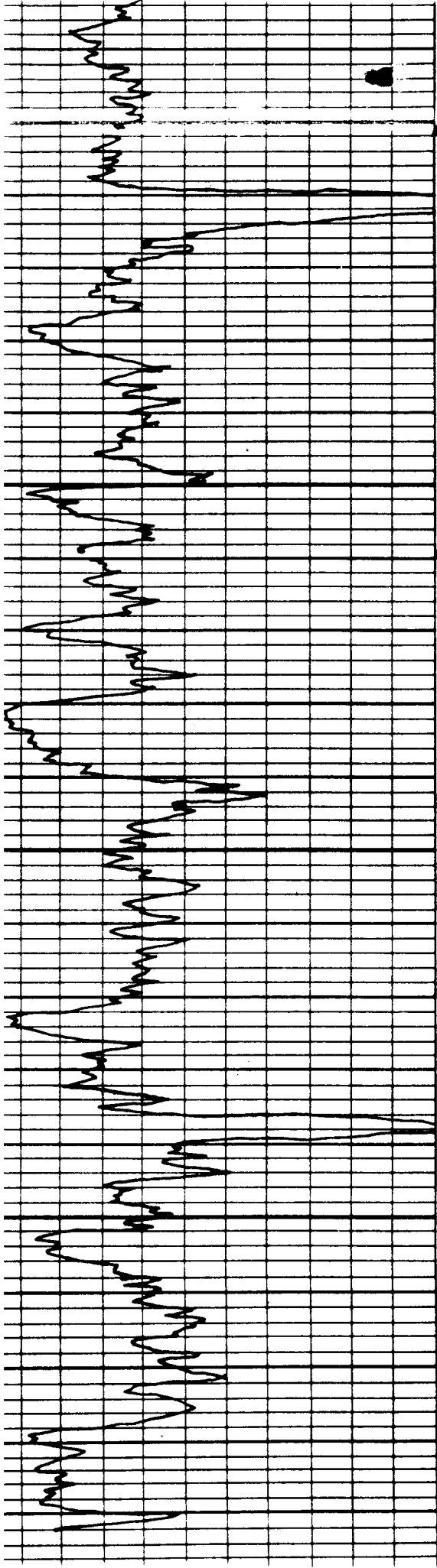
TOTAL WATER ———
PERCENT TOTAL WATER
80 60 40 20

PERMEABILITY ———
MILLIDARCYs
100 50 10 5 1

POROSITY ———
PERCENT
10 5

OIL SATURATION -----
PERCENT PORE SPACE
0 20 40 60 80





2650

2700

2750

2800

2842