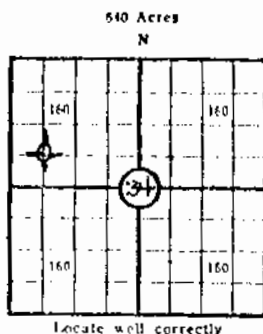


34-29-4W

(Mail to Kansas Geological Survey, 4150 Monroe Street, Wichita, Kansas 67209)

API # 15-173-20, 096



Lease Name: Lester Well No. 1
 Well Located: Sedgwick County, Kansas
C SW NW SEC 34 TWP 29S RGE 4W
 Operator: Mack Oil Company
 Address: 812 Union Center, Wichita, KS 67202
 Elevation: Ground 1380' D.F. 1385' K.B. 1387'
 Type Well: (Oil, gas, dry hole) dry hole

Drilling Commenced: 5-4 19 72 Drilling Completed: 5-11 19 72
 Well Completed: 5-11 19 72 Total Depth 4380' RTD
 Initial Production: dry hole

Casing Record

Size: 8 5/8" Set at 253' Size: _____ Set at _____
 Size: _____ Set at _____ Size: _____ Set at _____

Liner Record

Size: _____ Set from _____ To _____

Cementing

Casing Size	Sacks	Type Cement and Additives
<u>8 5/8"</u>	<u>185'</u>	<u>HA-5 pozmix, 1 lb. flocele per sack</u>
_____	_____	_____
_____	_____	_____

Perforations

Formation	Perforated Interval and Number Shots
_____	_____
_____	_____
_____	_____
_____	_____

Electric Log Run (Show type log and depths covered)

Laterolog-Gamma Ray-Neutron 254'-4376'