



**TRILOBITE TESTING, INC.**

# DRILL STEM TEST REPORT

Pickrell Drlg. Co. Inc.  
 100 S. Main Ste. 505  
 Wichita, KS 67202-3738  
 ATTN: Bob Stolzle

**31-29s-6w. Kingman Co.**  
**Matson Estates #3**  
 Job Ticket: 50856 **DST#: 1**  
 Test Start: 2013.02.12 @ 17:24:42

## GENERAL INFORMATION:

Formation: **Miss. Osage. Chert**  
 Deviated: No Whipstock: 0.00 ft (KB)  
 Time Tool Opened: 19:52:57  
 Time Test Ended: 04:19:12  
 Interval: **4111.00 ft (KB) To 4125.00 ft (KB) (TVD)**  
 Total Depth: 4125.00 ft (KB) (TVD)  
 Hole Diameter: 7.88 inches Hole Condition: Fair  
 Test Type: Conventional Bottom Hole (Initial)  
 Tester: Ryan Reynolds  
 Unit No: 48  
 Reference Elevations: 1453.00 ft (KB)  
 1443.00 ft (CF)  
 KB to GR/CF: 10.00 ft

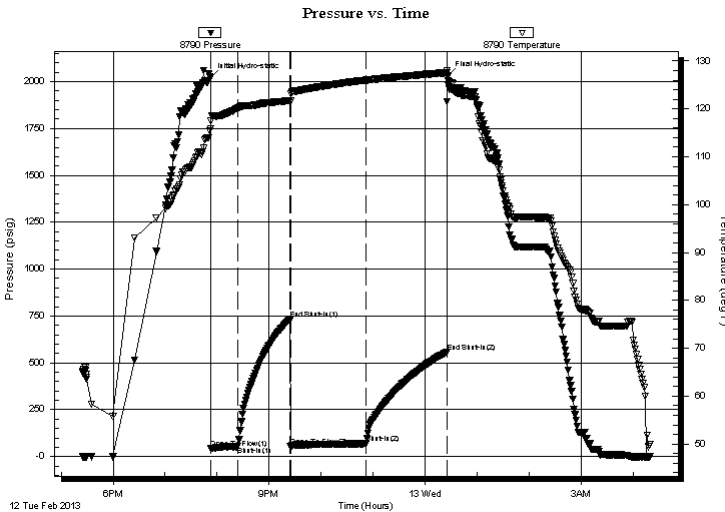
## Serial #: 8790

Inside

Press @ Run Depth: 69.18 psig @ 4112.00 ft (KB) Capacity: 8000.00 psig  
 Start Date: 2013.02.12 End Date: 2013.02.13 Last Calib.: 2013.02.13  
 Start Time: 17:24:47 End Time: 04:19:12 Time On Btm: 2013.02.12 @ 19:52:27  
 Time Off Btm: 2013.02.13 @ 00:26:12

TEST COMMENT: IF: Strong blow . BOB 10min. No GTS.  
 IS: Weak Surf . Blow  
 FF: Strong Blow . BOB 8min. No GTS.  
 FS: No blow

## PRESSURE SUMMARY



Time (Min.)	Pressure (psig)	Temp (deg F)	Annotation
0	2022.61	115.85	Initial Hydro-static
1	43.92	117.42	Open To Flow (1)
32	53.18	120.18	Shut-In(1)
92	733.99	121.77	End Shut-In(1)
92	53.96	121.67	Open To Flow (2)
180	69.18	126.03	Shut-In(2)
273	559.05	127.56	End Shut-In(2)
274	2034.04	126.76	Final Hydro-static

## Recovery

Length (ft)	Description	Volume (bbl)
20.00	Drig mud 100%mud	0.10
60.00	SLI OCM Trc%oil, 99%mud	0.30

## Gas Rates

Choke (inches)	Pressure (psig)	Gas Rate (Mcf/d)



**TRILOBITE  
TESTING, INC.**

# DRILL STEM TEST REPORT

**FLUID SUMMARY**

Pickrell Drlg. Co. Inc.

**31-29s.-6w. Kingman Co.**

100 S. Main Ste. 505  
Wichita, KS 67202-3738

**Matson Estates #3**

Job Ticket: 50856

**DST#: 1**

ATTN: Bob Stolzle

Test Start: 2013.02.12 @ 17:24:42

## Mud and Cushion Information

Mud Type: Gel Chem

Cushion Type:

Oil API:

deg API

Mud Weight: 9.00 lb/gal

Cushion Length:

ft

Water Salinity:

6000 ppm

Viscosity: 54.00 sec/qt

Cushion Volume:

bbbl

Water Loss: 8.79 in<sup>3</sup>

Gas Cushion Type:

Resistivity: ohm.m

Gas Cushion Pressure:

psig

Salinity: 6000.00 ppm

Filter Cake: 0.02 inches

## Recovery Information

Recovery Table

Length ft	Description	Volume bbbl
20.00	Drlg mud 100%mud	0.098
60.00	SLI OCM Trc%oil, 99%mud	0.295

Total Length: 80.00 ft      Total Volume: 0.393 bbl

Num Fluid Samples: 0

Num Gas Bombs: 0

Serial #: none

Laboratory Name:

Laboratory Location:

Recovery Comments:

Serial #: 8790

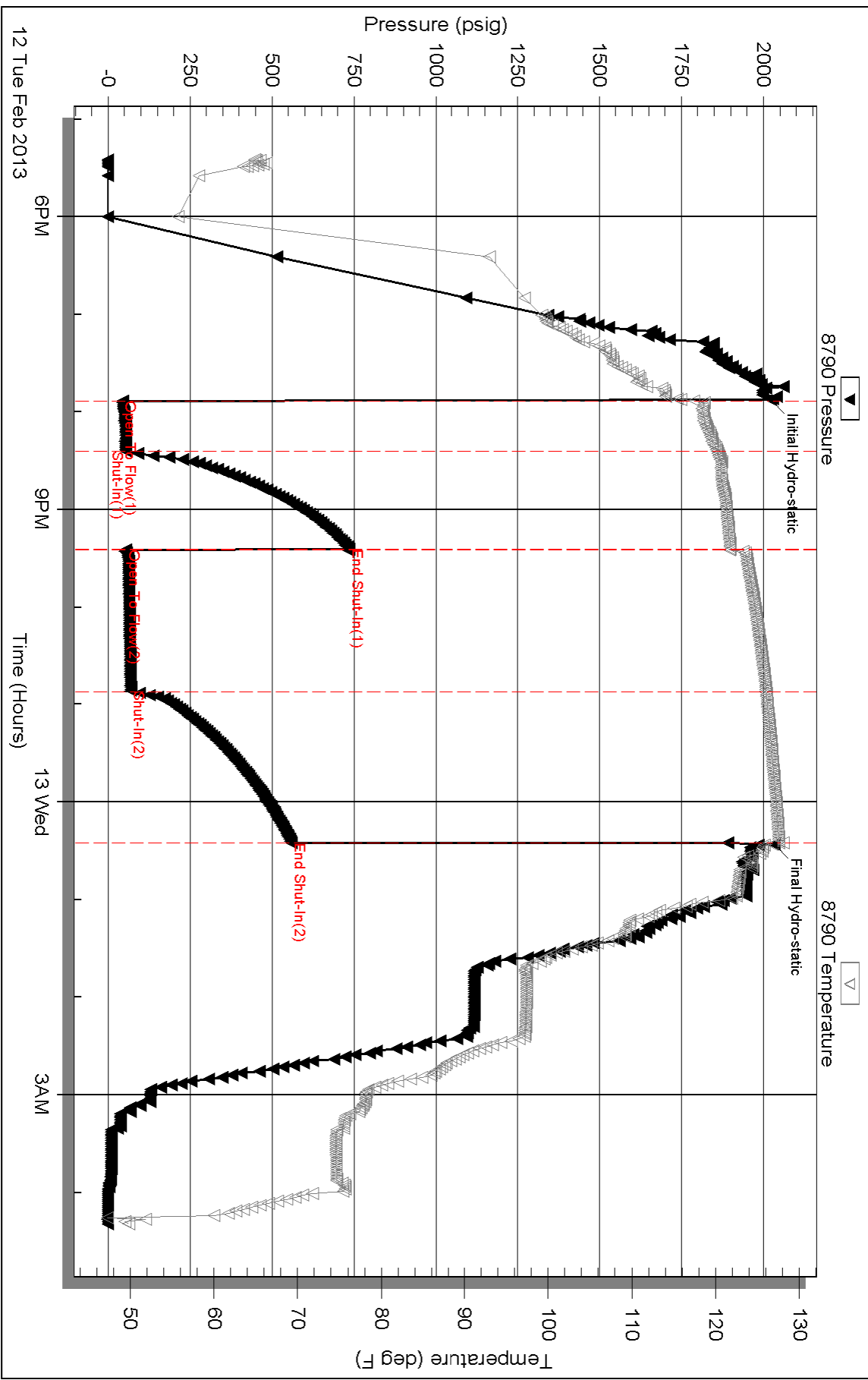
Inside

Pickrell Drig. Co. Inc.

Watson Estates #3

DST Test Number: 1

### Pressure vs. Time



Triobite Testing, Inc

Ref. No: 50856

Printed: 2013.02.13 @ 04:42:10