

15-095-21857

18-295-8w



**TRILOBITE
TESTING, INC.**

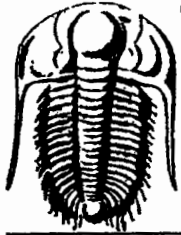
DRILL STEM TEST REPORT

Prepared for

Messenger Petroleum Co.
525 S Main
Kingman, KS 67068

Thimesch B-2
18-29-8
Kingman Co KS

Trilobite Testing, Inc
PO Box 362 - Hays, Kansas - 67601
ph: 785-625-4778 fax: 785-625-5620
e-mail: trilobite@eaglecom.net



TRILOBITE TESTING, INC.

DRILL STEM TEST REPORT
 Messenger Petroleum Co.
 525 S Main
 Kingman, KS 67068

| | | | |
|-------------|-----------------------|-----------|------------|
| Well name#: | Thimesch B-2 | Date: | 11/17/2003 |
| Location#: | 18-29-8 Kingman Co KS | Ticket #: | 17939 |
| | | DST# | 1 |

General Informaion:

| | | | | | |
|----------------|-----------|------------|--------------|---------------|--|
| Formation: | Stotler | Test Type: | Conventional | BHT: | |
| Interval: | 2547-2577 | Tester: | Nick Budig | OIL API: | |
| Total Depth: | 2577 | Elevation: | 1669 ft(KB) | H2O Salinity: | |
| Hole Diameter: | 7 7/8" | | 1678 ft(CF) | | |

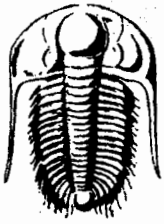
| | | | | |
|-------------------|------------------------|-------|--------------|----------|
| Start Data: | Tool Weight: | 2400 | Mud Type: | Chemical |
| Start Time: | Weight Set on Packers: | 24000 | Mud Weight: | 9.4 |
| Time tool opened: | Weight to Pull Loose: | 65000 | Viscosity: | 29 |
| Time Off Btm: | Initial String Weight: | 52000 | Water Loss: | |
| End Date: | Final String Weight: | 53000 | Resistivity: | |
| End Time: | Drill Pipe Length: | 2370 | Salinity: | |
| | Drill Collar Length: | 246 | | |
| | Wt. Pipe Length: | | | |

Test Comment:
 IF: Strong blow BOB in 30 sec
 ISI: Weak blow 1/2" in bucket
 FF: Fair blow 6 inch in bucket
 FSI: No blow

Recovery
 Length(ft): 430 Muddy Water 70%W 30%M
 Trace of GIP

Gas Volume Report

| Recorder #: | 10991 | Min: | Ins. Of water | Orifice | MCF/D |
|-----------------------|------------|------|---------------|---------|-------|
| Pressure Summary: | Time:(min) | | PSIG | size | |
| Initial Hydro-static: | 1279 | | | | |
| Open to Flow (1): | 59 30 | | | | |
| Shut-in (1): | 134 30 | | | | |
| End Shut-in (1): | 863 | | | | |
| Open to Flow (2): | 170 30 | | | | |
| Shut-in (2): | 213 30 | | | | |
| End Shut-in (2): | 863 | | | | |
| Final Hydro-static: | 1226 | | | | |



TRILOBITE TESTING INC.

P.O. Box 362 • Hays, Kansas 67601

INV
6023

No 17939

Test Ticket

Well Name & No. Thimesch B-2 Test No. 1 Date 11-17-03
 Company Messenger Petroleum Co. Zone Tested Stotler
 Address 525 S. Main Kingman, Ks 67068 Elevation 1669 KB 1678 GL
 Co. Rep / Geo. San Messenger Cont. Sterling Dalg #4 Est. Ft. of Pay _____ Por. _____ %
 Location: Sec. 18 Twp. 29 Rge. 8 Co. Kingman State Ks
 No. of Copies _____ Distribution Sheet (Y, N) _____ Turnkey (Y, N) _____ Evaluation (Y, N) _____

Interval Tested 2547 - 2577 Initial Str Wt./Lbs. 52,000 Unseated Str Wt./Lbs. 53,000
 Anchor Length 30' Wt. Set Lbs. 24,000 Wt. Pulled Loose/Lbs. 65,000
 Top Packer Depth 2342 Tool Weight 2400
 Bottom Packer Depth 2547 Hole Size 7 7/8" ✓ Rubber Size 6 3/4" ✓
 Total Depth 2577 Wt. Pipe Run 0 Drill Collar Run 246
 Mud Wt. 9.4 LCM - Vis. 29 WL - Drill Pipe Size 4 1/2 Ft. Run 2370
 Blow Description FF - Strong blow 0BB in 30 sec
ISI - Weak blow 1/2 inch in bucket
FF - Fair blow 6 inch in bucket
FSI - No blow

Recovery - Total Feet 430 GIP Trace Ft. in DC 246 Ft. in DP 186
 Rec. 430 Feet of Muddy Water 0 %gas 0 %oil 70 %water 30 %mud
 Rec. _____ Feet of _____ %gas _____ %oil _____ %water _____ %mud
 Rec. _____ Feet of _____ %gas _____ %oil _____ %water _____ %mud
 Rec. _____ Feet of _____ %gas _____ %oil _____ %water _____ %mud
 Rec. _____ Feet of _____ %gas _____ %oil _____ %water _____ %mud
 BHT _____ °F Gravity _____ °API D @ _____ °F Corrected Gravity _____ °API
 RW _____ @ _____ °F Chlorides _____ ppm Recovery _____ Chlorides 110,000 ppm System

| | AK-1 | Alpine | PSI | Recorder No. | Test |
|----------------------------------|----------------------------------|--------|-----|--------------|--------------|
| (A) Initial Hydrostatic Mud | <u>1279</u> | | | <u>2346</u> | <u>✓ 700</u> |
| (B) First Initial Flow Pressure | <u>59</u> <u>532</u> | | | <u>2548</u> | <u>✓ 150</u> |
| (C) First Final Flow Pressure | <u>134</u> <u>853</u> | | | <u>10991</u> | <u>✓ 200</u> |
| (D) Initial Shut-In Pressure | <u>863</u> | | | <u>2574</u> | <u>✓ 50</u> |
| (E) Second Initial Flow Pressure | <u>170</u> | | | | |
| (F) Second Final Flow Pressure | <u>213</u> | | | | |
| (G) Final Shut-In Pressure | <u>863</u> | | | | |
| (Q) Final Hydrostatic Mud | <u>1226</u> | | | | |

TRILOBITE TESTING INC. SHALL NOT BE LIABLE FOR DAMAGED OF ANY KIND OF THE PROPERTY OR PERSONNEL OF THE ONE FOR WHOM A TEST IS MADE, OR FOR ANY LOSS SUFFERED OR SUSTAINED, DIRECTLY OR INDIRECTLY, THROUGH THE USE OF ITS EQUIPMENT, OR ITS STATEMENTS OR OPINION CONCERNING THE RESULTS OF ANY TEST. TOOLS LOST OR DAMAGED IN THE HOLE SHALL BE PAID FOR AT COST BY THE PARTY FOR WHOM THE TEST IS MADE.

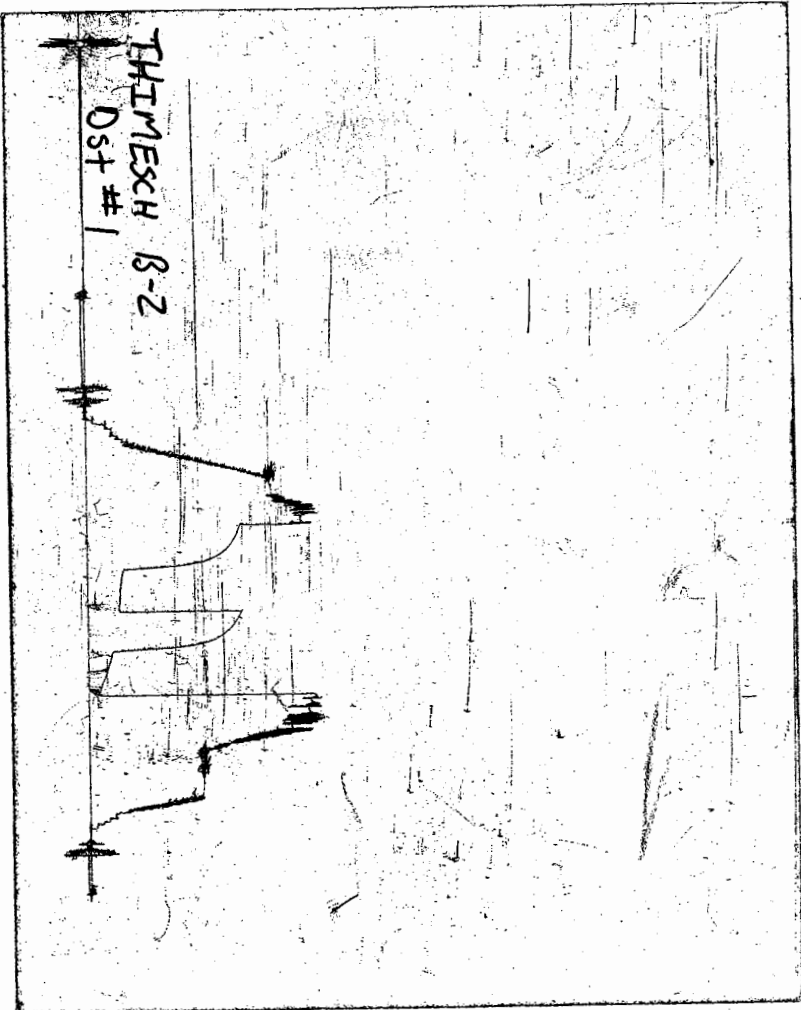
Approved By [Signature]
 Our Representative Nick Buelj

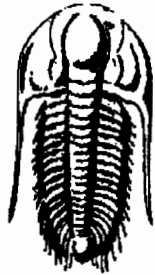
Initial Opening 30
 Initial Shut-In 30
 Final Flow 30
 Final Shut-In 30
 T-On Location 8:30
 T-Started _____
 T-Open _____
 T-Pulled _____
 T-Out _____

Circ Sub _____
 Sampler _____
 Straddle _____
 Ext. Packer _____
 Shale Packer _____
 Mileage 36 36
 Sub Total: 986
 Std. By _____
 Other _____
 Total: _____

CHART PAGE

This is a photocopy of the actual AK-1 recorder chart





**TRILOBITE
TESTING, INC.**

DRILL STEM TEST REPORT

Prepared For: **Messenger Petroleum**

525 S. Main
Kingman, Ks 67068

ATTN: Jon Messenger

18-29-8

Thimesch

Start Date: 2003.11.20 @ 00:41:36

End Date: 2003.11.20 @ 07:02:21

Job Ticket #: 17940 DST #: 2

Trilobite Testing, Inc

PO Box 362 Hays, KS 67601

ph: 785-625-4778 fax: 785-625-5620

Messenger Petroleum

Thimesch

18-29-8

DST # 2

Lansing

2003.11.20



**TRILOBITE
TESTING, INC**

DRILL STEM TEST REPORT

TOOL DIAGRAM

Messenger Petroleum

Thimesch

525 S. Main
Kingman, Ks 67068

18-29-8

Job Ticket: 17940

DST#: 2

ATTN: Jon Messenger

Test Start: 2003.11.20 @ 00:41:36

Tool Information

| | | | | |
|---------------------------|--------------------|-----------------------|--------------------------------|------------------------------------|
| Drill Pipe: | Length: 3256.41 ft | Diameter: 3.80 inches | Volume: 45.68 bbl | Tool Weight: 2100.00 lb |
| Heavy Wt. Pipe: | Length: 0.00 ft | Diameter: 0.00 inches | Volume: 0.00 bbl | Weight set on Packer: 20000.00 lb |
| Drill Collar: | Length: 246.59 ft | Diameter: 2.25 inches | Volume: 1.21 bbl | Weight to Pull Loose: 65000.00 lb |
| | | | <u>Total Volume: 46.89 bbl</u> | Tool Chased 0.00 ft |
| Drill Pipe Above KB: | 12.00 ft | | | String Weight: Initial 61000.00 lb |
| Depth to Top Packer: | 3520.00 ft | | | Final 61000.00 lb |
| Depth to Bottom Packer: | ft | | | |
| Interval between Packers: | 16.00 ft | | | |
| Tool Length: | 45.00 ft | | | |
| Number of Packers: | 2 | Diameter: 6.75 inches | | |

Tool Comments:

Tool Description

Length (ft) Serial No. Position Depth (ft) Accum. Lengths

| Tool Description | Length (ft) | Serial No. | Position | Depth (ft) | Accum. Lengths |
|------------------|-------------|------------|----------|------------|-------------------------------|
| Change Over Sub | 1.00 | | | 3492.00 | |
| Shut In Tool | 5.00 | | | 3497.00 | |
| Hydraulic tool | 5.00 | | | 3502.00 | |
| Jars | 5.00 | | | 3507.00 | |
| Safety Joint | 3.00 | | | 3510.00 | |
| Packer | 5.00 | | | 3515.00 | 29.00 Bottom Of Top Packer |
| Packer | 5.00 | | | 3520.00 | |
| Stubb | 2.00 | | | 3522.00 | |
| Recorder | 0.00 | 2346 | Inside | 3522.00 | |
| Anchor | 11.00 | | | 3533.00 | |
| Recorder | 0.00 | 10991 | Outside | 3533.00 | |
| Bullnose | 3.00 | | | 3536.00 | 16.00 Bottom Packers & Anchor |

Total Tool Length: 45.00

Serial #: 2346

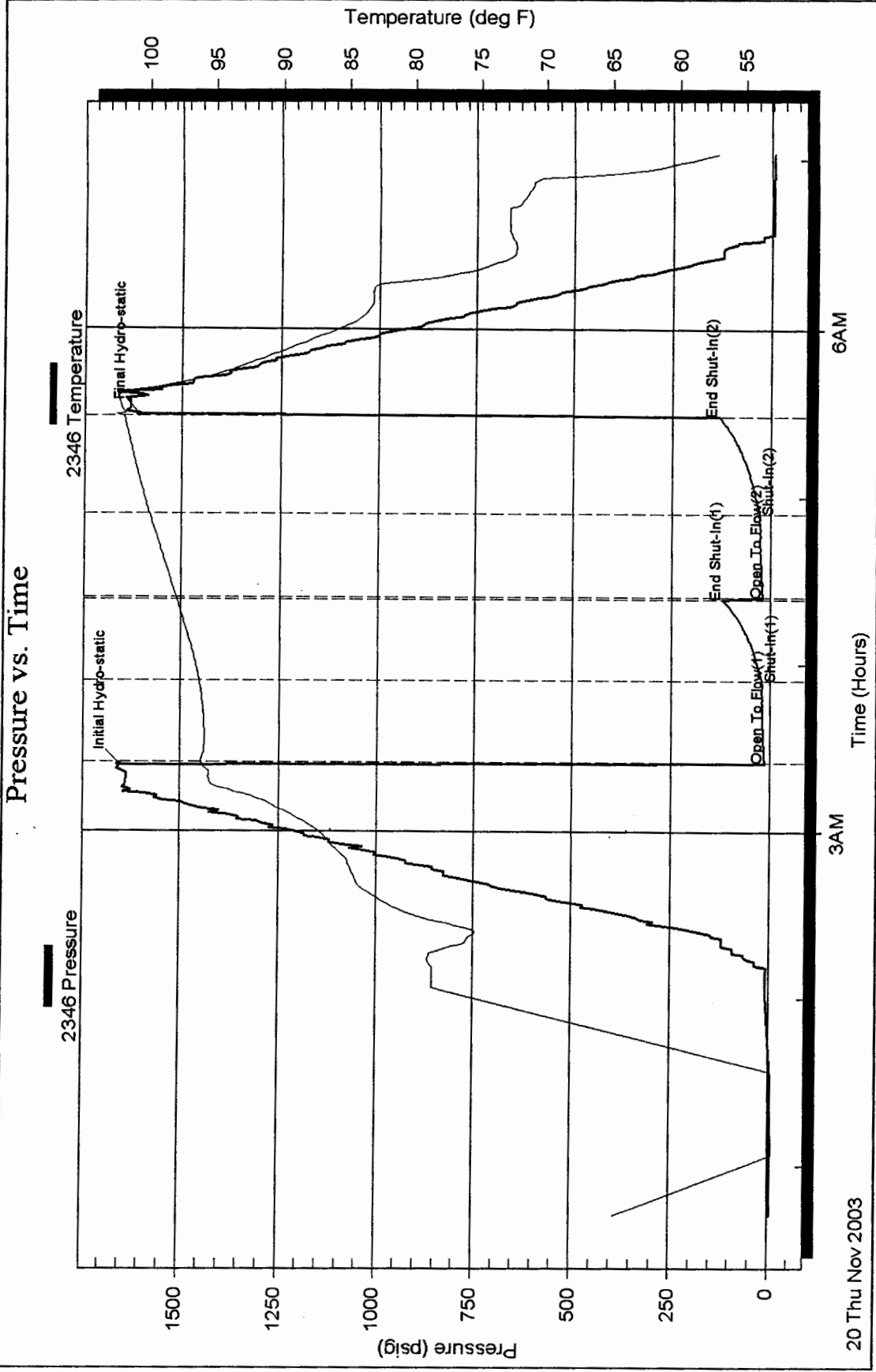
Inside

Messenger Petroleum

18-29-8

DST Test Number: 2

Pressure vs. Time

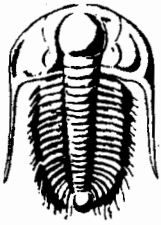


20 Thu Nov 2003

Trilobite Testing, Inc

Ref. No: 17940

Printed: 2003.12.01 @ 14:34:00 Page 5



TRILOBITE TESTING INC.

P.O. Box 362 • Hays, Kansas 67601

No 17940

Test Ticket

Well Name & No. Thimesch B-#2 Test No. #2 Date 11-20-03
 Company Messenger Petroleum, Inc. Zone Tested Lansing
 Address 525 S. Main Kingman, Ks. 67068 Elevation 1678 KB 1669 GL
 Co. Rep / Geo. Jon Messenger Cont. Sterling #4 Est. Ft. of Pay _____ Por. _____ %
 Location: Sec. 18 Twp. 29S Rge. 8W Co. Kingman, Co. State Ks
 No. of Copies 5 Distribution Sheet (Y, N) _____ Turnkey (Y, N) _____ Evaluation (Y, N) _____

Interval Tested 3520' - 3536' Initial Str Wt./Lbs. 61000 Unseated Str Wt/Lbs. 61000
 Anchor Length 16' Wt. Set Lbs. 20000 Wt. Pulled Loose/Lbs. 65000
 Top Packer Depth 3515' Tool Weight 2100
 Bottom Packer Depth 3520' Hole Size 7 7/8" Rubber Size 6 3/4"
 Total Depth 3536 Wt. Pipe Run N/A Drill Collar Run 246.59
 Mud Wt. 9.1 LCM 0 Vis. 45 WL 9.6 Drill Pipe Size 4 1/2 X H Ft. Run 3256.41

Blow Description IF! Weak blow built to 1" in H2O bucket.
IST! Bled down for 5 mins. No blow back.
FF! Weak blow built to 1" in H2O bucket.
FST! Bled down for 2 mins. No blow back.

Recovery - Total Feet 20' GIP N/A Ft. in DC 20' Ft. in DP N/A
 Rec. 20' Feet of VSOCM %gas 2 %oil _____ %water 98 %mud _____
 Rec. _____ Feet of _____ %gas _____ %oil _____ %water _____ %mud _____
 Rec. _____ Feet of _____ %gas _____ %oil _____ %water _____ %mud _____
 Rec. _____ Feet of _____ %gas _____ %oil _____ %water _____ %mud _____
 Rec. _____ Feet of _____ %gas _____ %oil _____ %water _____ %mud _____
 BHT 102° °F Gravity _____ °API D @ _____ °F Corrected Gravity _____ °API
 RW _____ @ _____ °F Chlorides _____ ppm Recovery _____ Chlorides 4000 ppm System

| | AK-1 | Alpine | Recorder No. | Test |
|----------------------------------|------|----------|----------------------------------|------------------------|
| (A) Initial Hydrostatic Mud | | 1654 PSI | <u>2346</u> | <u>700</u> |
| (B) First Initial Flow Pressure | | 13 PSI | (depth) <u>3522'</u> | Elec. Rec. <u>150</u> |
| (C) First Final Flow Pressure | | 20 PSI | Recorder No. <u>10991</u> | Jars <u>200</u> |
| (D) Initial Shut-In Pressure | | 121 PSI | (depth) <u>3533'</u> | Safety Jt. <u>50</u> |
| (E) Second Initial Flow Pressure | | 18 PSI | Recorder No. _____ | Circ Sub _____ |
| (F) Second Final Flow Pressure | | 27 PSI | (depth) _____ | Sampler _____ |
| (G) Final Shut-In Pressure | | 131 PSI | Initial Opening <u>30</u> | Straddle _____ |
| (Q) Final Hydrostatic Mud | | 1642 PSI | Initial Shut-In <u>30</u> | Ext. Packer _____ |
| | | | Final Flow <u>30</u> | Shale Packer _____ |
| | | | Final Shut-In <u>30</u> | Mileage <u>36</u> |
| | | | T-On Location <u>0030</u> | Sub Total: <u>1136</u> |
| | | | T-Started <u>0041</u> | Std. By _____ |
| | | | T-Open <u>0330</u> | Other _____ |
| | | | T-Pulled <u>0530</u> | Total: _____ |
| | | | T-Out <u>0702</u> | |

TRILOBITE TESTING INC. SHALL NOT BE LIABLE FOR DAMAGES OF ANY KIND OF THE PROPERTY OR PERSONNEL OF THE ONE FOR WHOM A TEST IS MADE, OR FOR ANY LOSS SUFFERED OR SUSTAINED, DIRECTLY OR INDIRECTLY, THROUGH THE USE OF ITS EQUIPMENT, OR ITS STATEMENTS OR OPINION CONCERNING THE RESULTS OF ANY TEST. TOOLS LOST OR DAMAGED IN THE HOLE SHALL BE PAID FOR AT COST BY THE PARTY FOR WHOM THE TEST IS MADE.

Approved By Jon L. Messenger
 Our Representative Darren J. Amrine

CHART PAGE

This is a photocopy of the actual AK-1 recorder chart

