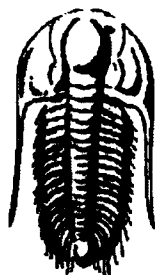


20-2s-26w

API # 15.039.21138.00.00

IND



**TRILOBITE
TESTING, INC.**

DRILL STEM TEST REPORT

Prepared For: **Prairie Fire Petroleum LLC**

PO Box 38
Norton, KS 67554

ATTN: Randy Kilian

Henningson #1-20

20-2s-26w Decatur,KS

Start Date: 2011.09.19 @ 01:47:53

End Date: 2011.09.19 @ 08:01:23

Job Ticket #: 44172 DST #: 1

Prairie Fire Petroleum LLC

20-2s-26w Decatur,KS

Henningson #1-20

DST # 1

LKC "J-K"

2011.09.19

RECEIVED
OCT 27 2011
KCC WICHITA

Trilobite Testing, Inc
PO Box 362 Hays, KS 67601
ph: 785-625-4778 fax: 785-625-5620

ORIGINAL

Printed: 2011.09.21 @ 08:20:49



**TRILOBITE
TESTING, INC**

DRILL STEM TEST REPORT

Prairie Fire Petroleum LLC

20-2s-26w Decatur, KS

PO Box 38
Norton, KS 67554

Henningson #1-20

Job Ticket: 44172

DST#: 1

ATTN: Randy Kilian

Test Start: 2011.09.19 @ 01:47:53

GENERAL INFORMATION:

Formation: LKC "J-K"

Deviated: No Whipstock: ft (KB)

Time Tool Opened: 04:22:53

Time Test Ended: 08:01:23

Test Type: Conventional Straddle (Initial)

Tester: Brian Fairbank

Unit No: 41

Interval: 3650.00 ft (KB) To 3730.00 ft (KB) (TVD)

Total Depth: 3783.00 ft (KB) (TVD)

Hole Diameter: 7.88 inches Hole Condition: Good

Reference Elevations: 2639.00 ft (KB)

2631.00 ft (CF)

KB to GR/CF: 8.00 ft

Serial #: 8734 Outside

Press@RunDepth: 55.82 psig @ 3656.00 ft (KB)

Start Date: 2011.09.19

End Date:

2011.09.19

Capacity: 8000.00 psig

Last Calib.: 2011.09.19

Start Time: 01:47:54

End Time:

08:01:23

Time On Btm: 2011.09.19 @ 04:21:53

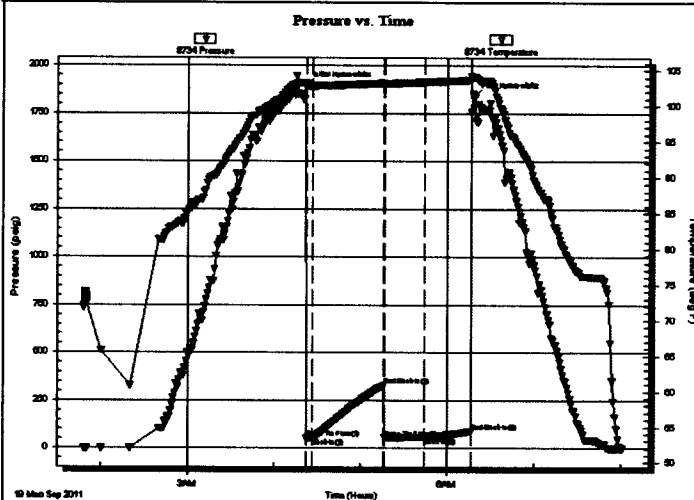
Time Off Btm: 2011.09.19 @ 06:18:23

TEST COMMENT: IFP - weak blow throughout 1/4"

ISI - no blow back

FFP - no blow

FSI - no blow back



PRESSURE SUMMARY

Time (Min.)	Pressure (psig)	Temp (deg F)	Annotation
0	1892.78	103.33	Initial Hydro-static
1	52.73	102.91	Open To Flow (1)
5	53.27	102.81	Shut-In(1)
54	330.30	103.22	End Shut-In(1)
55	54.12	103.15	Open To Flow (2)
83	55.82	103.38	Shut-In(2)
115	87.69	103.67	End Shut-In(2)
117	1841.48	104.05	Final Hydro-static

Recovery

Length (ft)	Description	Volume (bbl)
2.00	drl mud 100%	0.03

Gas Rates

Choke (inches)	Pressure (psig)	Gas Rate (Mcf/d)



**TRILOBITE
TESTING, INC**

DRILL STEM TEST REPORT

TOOL DIAGRAM

Prairie Fire Petroleum LLC

20-2s-26w Decatur, KS

PO Box 38
Norton, KS 67554

Henningson #1-20

Job Ticket: 44172

DST#: 1

ATTN: Randy Kilian

Test Start: 2011.09.19 @ 01:47:53

Tool Information

Drill Pipe:	Length: 3631.00 ft	Diameter: 3.80 inches	Volume: 50.93 bbl	Tool Weight: 3000.00 lb
Heavy Wt. Pipe:	Length: 0.00 ft	Diameter: 0.00 inches	Volume: 0.00 bbl	Weight set on Packer: 30000.00 lb
Drill Collar:	Length: 0.00 ft	Diameter: 0.00 inches	Volume: 0.00 bbl	Weight to Pull Loose: 51000.00 lb
			Total Volume: 50.93 bbl	Tool Chased 0.00 ft
Drill Pipe Above KB:	8.00 ft			String Weight: Initial 47000.00 lb
Depth to Top Packer:	3650.00 ft			Final 47000.00 lb
Depth to Bottom Packer:	3730.00 ft			
Interval between Packers:	80.00 ft			
Tool Length:	165.00 ft			
Number of Packers:	3	Diameter: 6.75 inches		

Tool Comments:

Tool Description

Length (ft) Serial No. Position Depth (ft) Accum. Lengths

Shut In Tool	5.00			3628.00	
Hydraulic tool	5.00			3633.00	
Jars	5.00			3638.00	
Safety Joint	2.00			3640.00	
Packer	5.00			3645.00	27.00 Bottom Of Top Packer
Packer	5.00			3650.00	
Stubb	1.00			3651.00	
Perforations	5.00			3656.00	
Recorder	0.00	8372	Inside	3656.00	
Recorder	0.00	8734	Outside	3656.00	
Change Over Sub	1.00			3657.00	
Blank Spacing	62.00			3719.00	
Change Over Sub	1.00			3720.00	
Perforations	5.00			3725.00	
Blank Off Sub	1.00			3726.00	
Blank Spacing	4.00			3730.00	80.00 Tool Interval
Packer	5.00			3735.00	
Stubb	1.00			3736.00	
Perforations	19.00			3755.00	
Recorder	0.00	8365	Below	3755.00	
Change Over Sub	1.00			3756.00	
Blank Spacing	32.00			3788.00	58.00 Bottom Packers & Anchor

Total Tool Length: 165.00



**TRILOBITE
TESTING, INC**

DRILL STEM TEST REPORT

FLUID SUMMARY

Prairie Fire Petroleum LLC

20-2s-26w Decatur,KS

PO Box 38
Norton, KS 67554

Henningson #1-20

Job Ticket: 44172

DST#: 1

ATTN: Randy Kilian

Test Start: 2011.09.19 @ 01:47:53

Mud and Cushion Information

Mud Type: Gel Chem	Cushion Type:	Oil API:	deg API
Mud Weight: 10.00 lb/gal	Cushion Length: ft	Water Salinity:	ppm
Viscosity: 57.00 sec/qt	Cushion Volume: bbl		
Water Loss: 8.79 in ³	Gas Cushion Type:		
Resistivity: ohm.m	Gas Cushion Pressure: psig		
Salinity: 1700.00 ppm			
Filter Cake: inches			

Recovery Information

Recovery Table

Length ft	Description	Volume bbl
2.00	drl mud 100%	0.028

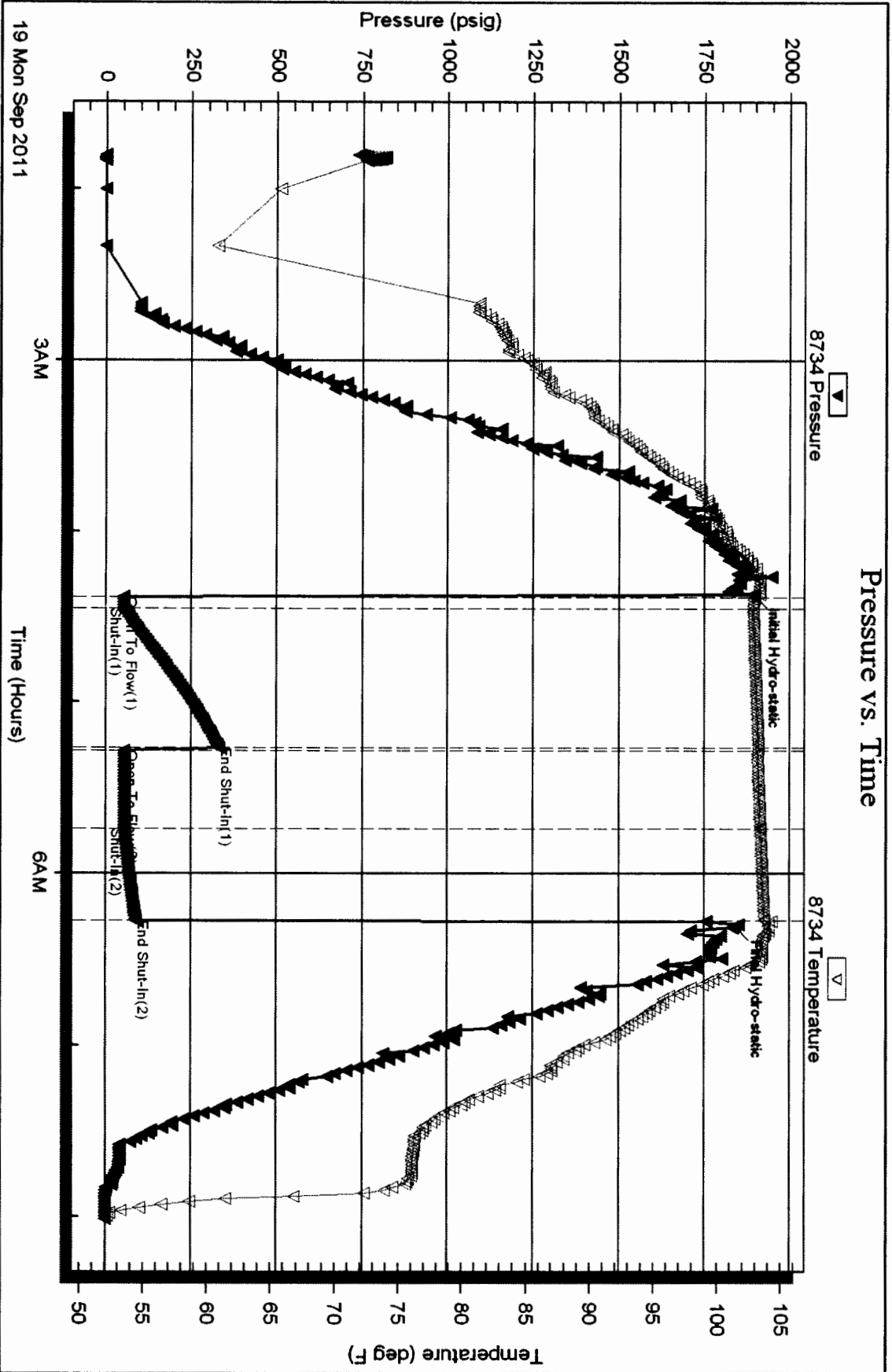
Total Length: 2.00 ft Total Volume: 0.028 bbl

Num Fluid Samples: 0 Num Gas Bombs: 0 Serial #:

Laboratory Name: Laboratory Location:

Recovery Comments:

Pressure vs. Time

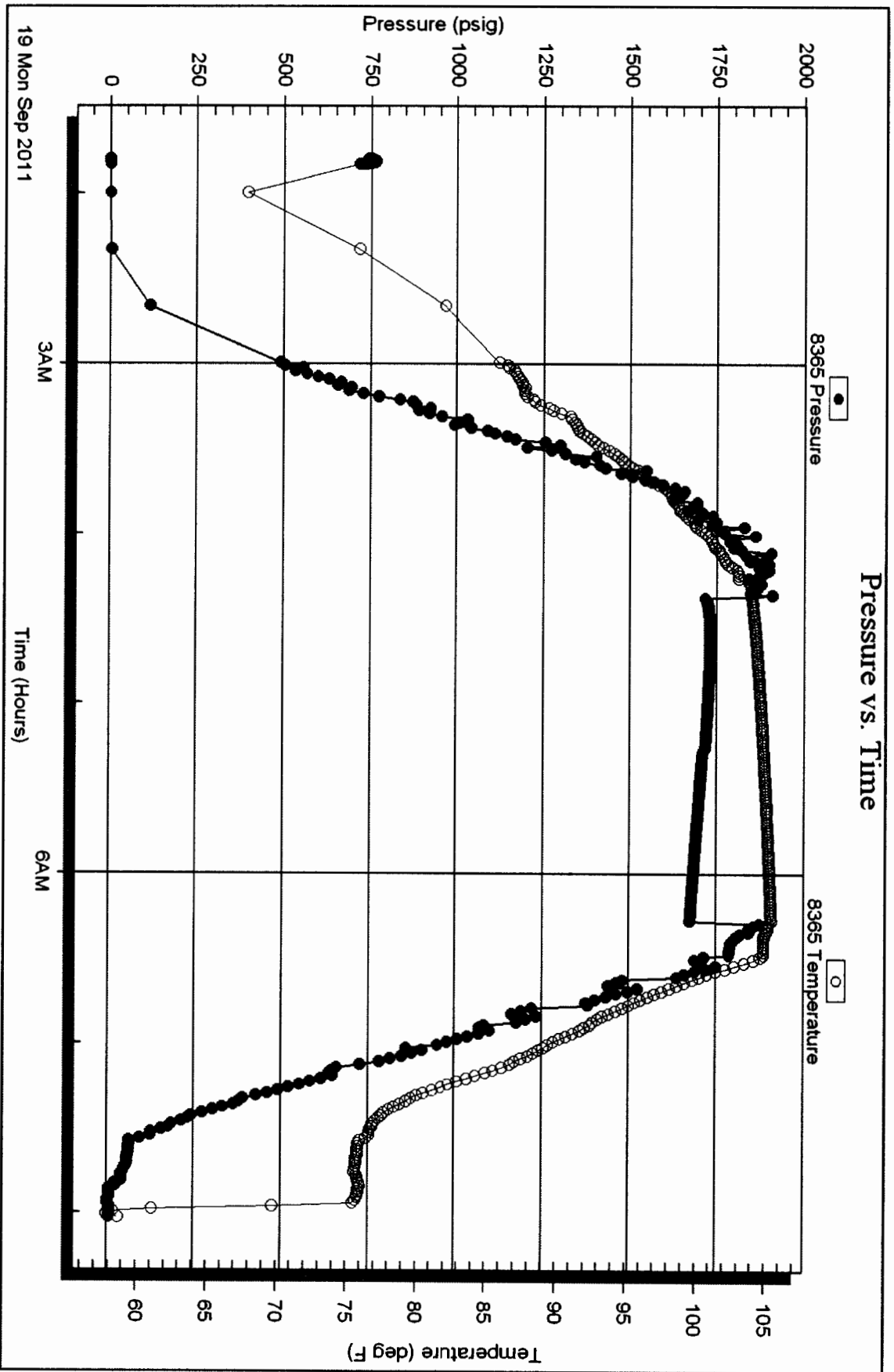


Serial #: 8365

Below (Stratified) Fire Petroleum LLC

Henningson #1-20

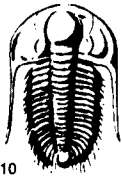
DST Test Number: 1



Thiokol Testing, Inc

Ref. No: 44172

Printed: 2011.09.21 @ 08:20:52



TRILOBITE TESTING INC.

P.O. Box 1733 • Hays, Kansas 67601

RECEIVED
SEP 20 2011

Test Ticket

NO. 44172

4/10

Well Name & No. Henningsen #1-20 Test No. 1 Date 9-19-11
 Company Prairie Fire Petroleum LLC Elevation 2639 KB 2631 GL
 Address PO Box 38 Norton, Ky 67554
 Co. Rep / Geo. Randy Kiker Rig Integrity
 Location: Sec. 20 Twp. 2 Rge. 26 Co. Decatur State Ky

Interval Tested 3650-3730 Zone Tested LKL "J-K"
 Anchor Length 80 Drill Pipe Run 3631 Mud Wt. 9.5
 Top Packer Depth 3645 Drill Collars Run --- Vis 57
 Bottom Packer Depth 3650 Wt. Pipe Run --- WL 8.8
 Total Depth 3783 Chlorides 1700 ppm System LCM
 Blow Description IFP - weak blow throughout 1/4"
ISI - no blow back
FFP - no blow
FST - no blow back

Rec	Feet of	%gas	%oil	%water	%mud
<u>2</u>	<u>drl mud</u>			<u>100</u>	
Rec	Feet of	%gas	%oil	%water	%mud
Rec	Feet of	%gas	%oil	%water	%mud
Rec	Feet of	%gas	%oil	%water	%mud
Rec	Feet of	%gas	%oil	%water	%mud

Rec Total 2 BHT 64 Gravity _____ API RW _____ @ _____ °F Chlorides _____ ppm

(A) Initial Hydrostatic 1893 Test 1125' T-On Location C117
 (B) First Initial Flow 53 Jars 250' T-Started 0147
 (C) First Final Flow 53 Safety Joint 75' T-Open 0423
 (D) Initial Shut-In 330 Circ Sub _____ T-Pulled 0616
 (E) Second Initial Flow 54 Hourly Standby _____ T-Out 0802
 (F) Second Final Flow 56 Mileage 26RT 36.40 Comments _____
 (G) Final Shut-In 88 Sampler _____
 (H) Final Hydrostatic 1942 Straddle 600' Ruined Shale Packer _____
 Shale Packer _____ Ruined Packer _____
 Extra Packer _____ Extra Copies _____
 Initial Open 5 Extra Recorder _____ Sub Total 0
 Initial Shut-In 45 Day Standby _____ Total 2086.40
 Final Flow 30 Accessibility _____ MP/DST Disc't _____
 Final Shut-In 30 Sub Total 2086.40

Approved By _____ Our Representative Brian Fairbank

TriLOBITE Testing Inc. shall not be liable for damaged of any kind of the property or personnel of the one for whom a test is made, or for any loss suffered or sustained, directly or indirectly, through the use of its equipment, or its statements or opinion concerning the results of any test, tools lost or damaged in the hole shall be paid for at cost by the party for whom the test is made.