

15-039-20916

31-2S-26W

TRILOBITE TESTING L.L.C.

OPERATOR : Murfin Drilling Co., Inc
WELL NAME: Stites-McDonnell
LOCATION : 31-2S-26W Decatur co KS
INTERVAL : 3500.00 To 3576.00 ft

DATE 9-18-00

KB 2639.00 ft TICKET NO: 13040 DST #1
GR 2634.00 ft FORMATION: Toronto-L/KC "B"
TD 3576.00 ft TEST TYPE: CONVENTIONAL

RECORDER DATA

Mins	Field	1	2	3	4	TIME DATA-----
PF 30 Rec.	13339	13339	3246			PF Fr. 2215 to 2245 hr
SI 30 Range(Psi)	4000.0	4000.0	4995.0	0.0	0.0	IS Fr. 2245 to 2315 hr
SF 60 Clock(hrs)	12 HR	12 hr	ALP			SF Fr. 2315 to 0015 hr
FS 60 Depth(ft)	3571.0	3571.0	3502.0	0.0	0.0	FS Fr. 0015 to 0115 hr

	Field	1	2	3	4	
A. Init Hydro	1722.0	1784.0	1668.0	0.0	0.0	T STARTED 2040 hr
B. First Flow	311.0	318.0	229.0	0.0	0.0	T ON BOTM 2213 hr
B1. Final Flow	311.0	318.0	269.0	0.0	0.0	T OPEN 2215 hr
C. In Shut-in	1110.0	1121.0	1140.0	0.0	0.0	T PULLED 0115 hr
D. Init Flow	353.0	370.0	280.0	0.0	0.0	T OUT 0330 hr
E. Final Flow	374.0	385.0	372.0	0.0	0.0	
F. Fl Shut-in	1130.0	1135.0	1146.0	0.0	0.0	TOOL DATA-----
G. Final Hydro	1672.0	1666.0	1641.0	0.0	0.0	Tool Wt. 2000.00 lbs
Inside/Outside	0	0	I			Wt Set On Packer 30000.00 lbs
						Wt Pulled Loose 65000.00 lbs
						Initial Str Wt 50000.00 lbs
						Unseated Str Wt 56000.00 lbs
						Bot Choke 0.75 in
						Hole Size 8.88 in
						D Col. ID 2.25 in
						D. Pipe ID 3.80 in
						D.C. Length 495.00 ft
						D.P. Length 2988.00 ft

RECOVERY

Tot Fluid 945.00 ft of 495.00 ft in DC and 450.00 ft in DP
180.00 ft of Gas in pipe
120.00 ft of Slightly gassy oil cut mud
0.00 ft of 15%gas 75%oil 10%mud
645.00 ft of Clean Gassy oil
0.00 ft of 15% gas 85% oil
180.00 ft of Slightly gassy oil cut mud
0.00 ft of 15% gas 45% oil 30% mud
0.00 ft of
SALINITY 0.00 P.P.M. A.P.I. Gravity 23.00

MUD DATA-----

Mud Type Chemical
Weight 8.80 lb/c
Vis. 45.00 S/L
W.L. 7.60 in3
F.C. 0.00 in
Mud Drop Y 50.0 ft

BLOW DESCRIPTION

Initial Flow:
Tool landed on bridge 25' off bottom
Reset tool and slid to bottom surging
blow built to 4"

Initial Shut-In:
Weak surface blow steady throughout

Final Flow:
Surging surface blow built to 5"

Final Shut-In:
Weak surface blow steady throughout

Amt. of fill 25.00 ft
Btm. H. Temp. 106.00 F
Hole Condition Fair
% Porosity 0.00
Packer Size 6.75 in
No. of Packers 2
Cushion Amt. 0.00
Cushion Type
Reversed Out N
Tool Chased Y 25.00 ft
Tester Rod Steinbrink
Co. Rep. Paul Gunzelman
Contr. Murfin
Rig # 3
Unit #
Pump T.

SAMPLES:
SENT TO:

Test Successful: Y

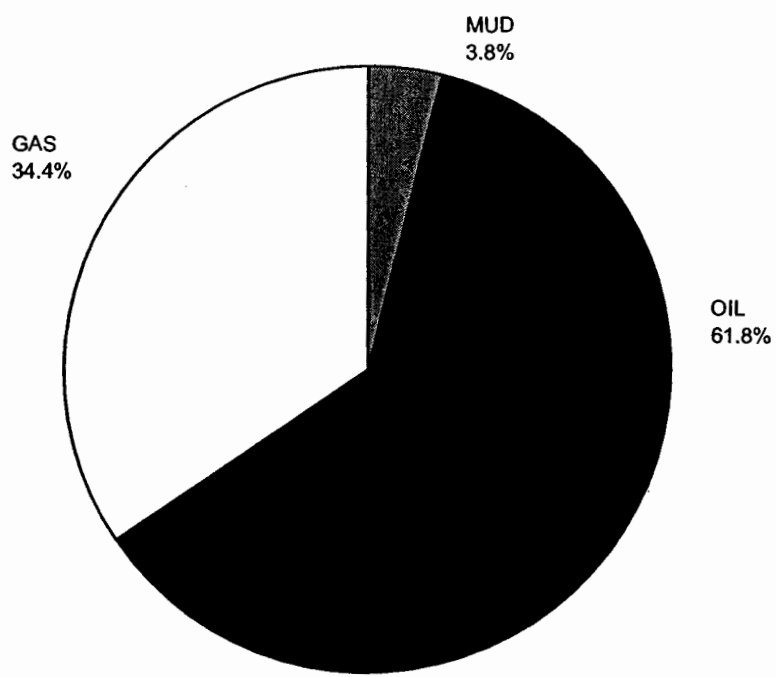
CALCULATED RECOVERY ANALYSIS

DST 1

TICKET 13040

SAMPLE #	TOTAL FEET	GAS		OIL		WATER		MUD	
		%	FEET	%	FEET	%	FEET	%	FEET
DRILL 1	180	100	180	0	0	0	0	0	0
PIPE 2	120	15	18	75	90	0	0	10	12
3	330	15	49.5	85	280.5	0	0	0	0
4	0	0	0	0	0	0	0	0	0
5	0	0	0	0	0	0	0	0	0
6	0	0	0	0	0	0	0	0	0
WEIGHT 1	0	0	0	0	0	0	0	0	0
PIPE 2	0	0	0	0	0	0	0	0	0
3	0	0	0	0	0	0	0	0	0
4	0	0	0	0	0	0	0	0	0
5	0	0	0	0	0	0	0	0	0
DRILL 1	315	15	47.25	85	267.75	0	0	0	0
COLLARS 2	180	15	27	45	81	0	0	30	54
3	0	0	0	0	0	0	0	0	0
4	0	0	0	0	0	0	0	0	0
5	0	0	0	0	0	0	0	0	0
TOTAL	1125	0	321.75	0	719.25	0	0	0	66

BBL OIL= 6.9738975 * HRS OPEN 1.5 = BBL/DAY 111.58236
 BBL WATER= 0 * = 0
 BBL MUD= 0.4347
 BBL GAS = 3.8825325



13040 DST #1 Stites-McDonnell #1-31 Murfin Drilling Co.

TEST HISTORY

Flag Points
 t(Min.) P (PSig)

R:	0.00	1668.41
B:	0.00	229.38
C:	24.00	269.03
D:	31.00	1140.92
E:	0.00	280.39
F:	59.00	372.03
G:	80.00	1146.60
Q:	0.00	1641.10

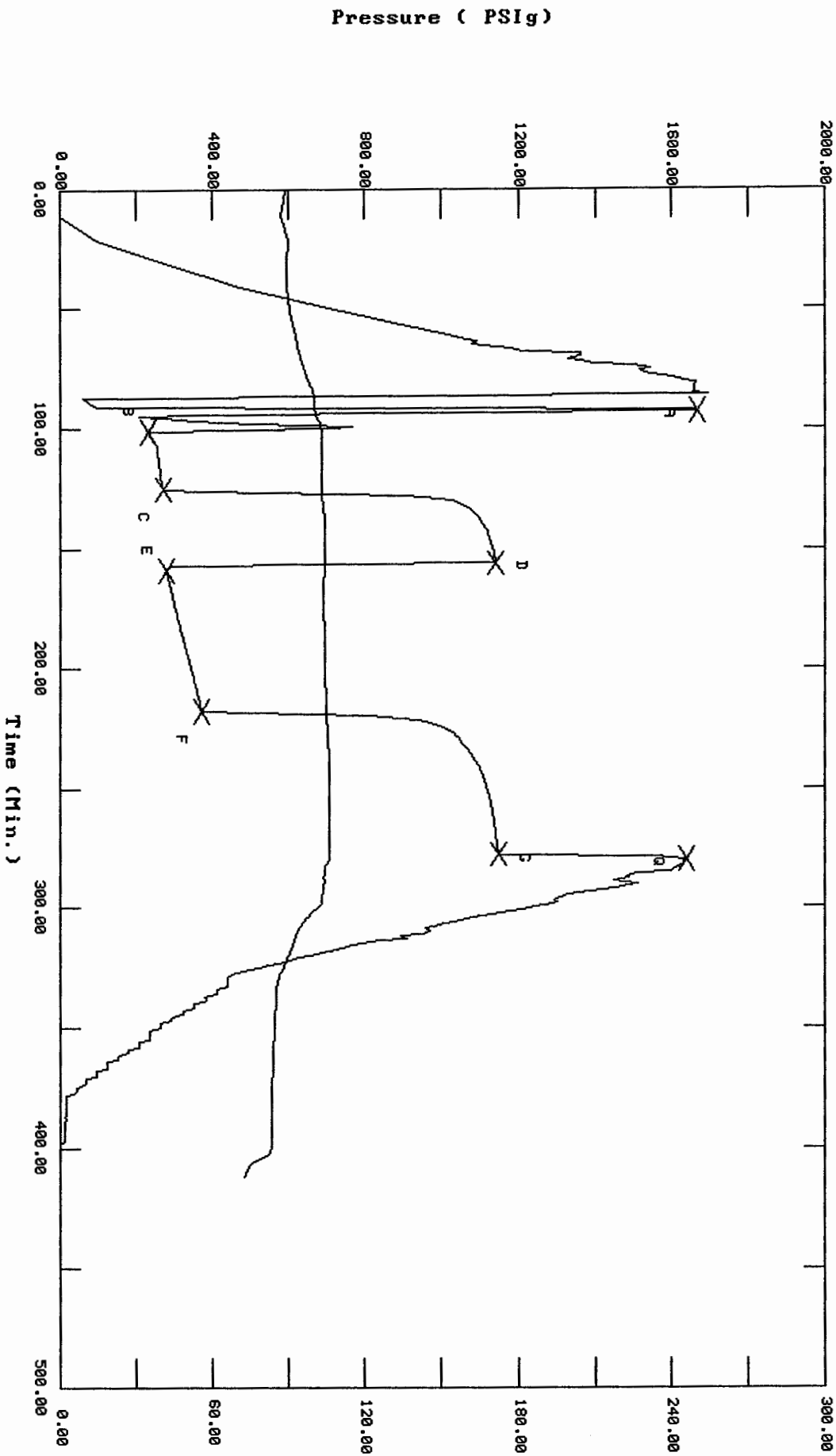
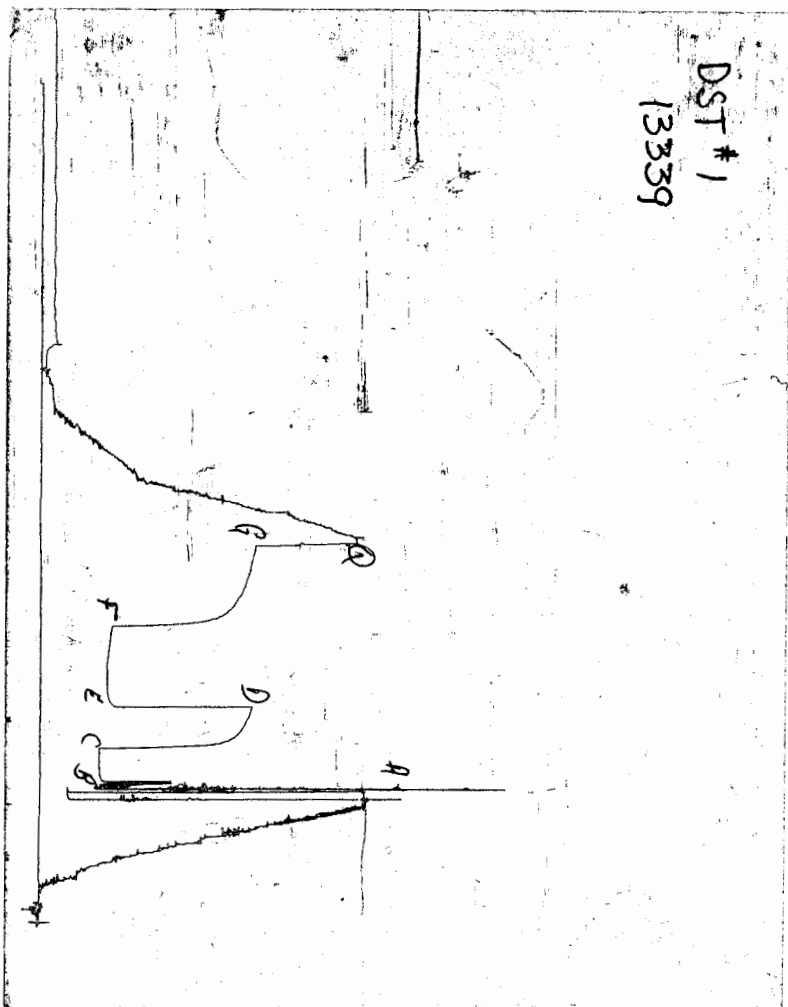


CHART PAGE



This is a photocopy of the actual AK-1 recorder chart

TRILOBITE TESTING L.L.C.

P.O. Box 362 • Hays, Kansas 67601

No 13040

Test Ticket

Well Name & No. Stites-McDonnell #1-31 Test No. 1 Date 9-18-00
Company Murfin Drilling Company, Inc. Zone Tested Toronto - L/KC 'B'
Address 250 N. Water #300 Wichita, KS. 67202 Elevation 2639 KB 2634 GL
Co. Rep / Geo. Paul Gunzelman Cont. Murfin #3 Est. Ft. of Pay Por. %
Location: Sec. 31 Twp. 2S Rge. 26W Co. Decatur State KS.
No. of Copies Distribution Sheet (Y, N) Turnkey (Y, N) N Evaluation (Y, N)

Interval Tested 3500-3576 Initial Str Wt./Lbs. 50,000 Unseated Str Wt./Lbs. 56,000
Anchor Length 76' Wt. Set Lbs. 30,000 Wt. Pulled Loose/Lbs. 65,000
Top Packer Depth 3495 Tool Weight 2,000
Bottom Packer Depth 3500 Hole Size — 7 7/8" Rubber Size — 6 3/4"
Total Depth 3576 Wt. Pipe Run Drill Collar Run 495' (8.1)
Mud Wt. 8.8 LCM Vis. 45 WL 7.6 Drill Pipe Size 4 1/2" XH Ft. Run 2988' (48)
Blow Description IF: Tool landed on bridge 25' off bttm - Reset and slid to bttm
Surging blow built to 4" IS: Weak surface blow throughout.
FF: Surging surface blow built to 5"
FSI: Weak surface blow steady throughout.

Recovery — Total Feet 945' GIP 180' Ft. in DC 495' Ft. in DP 450'
Rec. 120' Feet Of SGOCM 15 %gas 75 %oil — %water 10 %mud
Rec. Feet Of %gas %oil %water %mud
Rec. 645' Feet Of CGO 15 %gas 85 %oil — %water — %mud
Rec. Feet Of %gas %oil %water %mud
Rec. 180' Feet Of SGOCM 15 %gas 45 %oil — %water 30 %mud
BHT 106° °F Gravity 24 °API D@ 70° °F Corrected Gravity 23 °API
RW @ °F Chlorides ppm Recovery Chlorides 700 ppm System

	AK-1	Alpine	PSI Recorder No.	T-On Location
(A) Initial Hydrostatic Mud	1722	1668	3246	2015 :30
(B) First Initial Flow Pressure	311	229	(depth) 3502	T-Started 2040 3:20
(C) First Final Flow Pressure	311	269	PSI Recorder No. 13339	T-Open 2215 3:30
(D) Initial Shut-In Pressure	1110	1140	(depth) 3571	T-Pulled 0115 6:00
(E) Second Initial Flow Pressure	353	280	PSI Recorder No. <u> </u>	T-Out 0330
(F) Second Final Flow Pressure	374	372	(depth) <u> </u>	T-Off Location 0415
(G) Final Shut-in Pressure	1130	1146	PSI Initial Opening 30	Test 650
(Q) Final Hydrostatic Mud	1672	1641	PSI Initial Shut-in 30	Jars X 200
			Final Flow 60	Safety Joint X 50
			Final Shut-in 60	Straddle <u> </u>

TRILOBITE TESTING L.L.C. SHALL NOT BE LIABLE FOR DAMAGE OF ANY KIND OF THE PROPERTY OR PERSONNEL OF THE ONE FOR WHOM A TEST IS MADE, OR FOR ANY LOSS SUFFERED OR SUSTAINED, DIRECTLY OR INDIRECTLY, THROUGH THE USE OF ITS EQUIPMENT, OR ITS STATEMENTS OR OPINION CONCERNING THE RESULTS OF ANY TEST. TOOLS LOST OR DAMAGED IN THE HOLE SHALL BE PAID FOR AT COST BY THE PARTY FOR WHOM THE TEST IS MADE.

Approved By Paul Gunzelman
Our Representative Rod Steinbrink

Circ. Sub X N/C
Sampler
Extra Packer
Elec. Rec. X 150
Mileage 122 122
Other
TOTAL PRICE \$ 1172

TRILOBITE TESTING L.L.C.

OPERATOR : Murfin Drilling Co. Inc. DATE 9-19-00
 WELL NAME: Stites-McDonnell #1-31 KB 2639.00 ft TICKET NO: 13041 DST #2
 LOCATION : 31-2S-26W Decatur co KS GR 2634.00 ft FORMATION: L/KC "C & D"
 INTERVAL : 3570.00 To 3596.00 ft TD 3596.00 ft TEST TYPE: CONVENTIONAL

RECORDER DATA

Mins	Field	1	2	3	4	TIME DATA-----
PF 30 Rec.	13339	13339	3246			PF Fr. 1136 to 1206 hr
SI 30 Range(Psi)	4000.0	4000.0	4995.0	0.0	0.0	IS Fr. 1206 to 1236 hr
SF 60 Clock(hrs)	12 HR	12 HR	ALP			SF Fr. 1236 to 1336 hr
FS 60 Depth(ft)	3591.0	3591.0	3572.0	0.0	0.0	FS Fr. 1336 to 1436 hr

	Field	1	2	3	4	
A. Init Hydro	1722.0	1729.0	1699.0	0.0	0.0	T STARTED 0940 hr
B. First Flow	83.0	104.0	31.0	0.0	0.0	T ON BOTM 1134 hr
B1. Final Flow	83.0	90.0	83.0	0.0	0.0	T OPEN 1136 hr
C. In Shut-in	415.0	417.0	457.0	0.0	0.0	T PULLED 1436 hr
D. Init Flow	187.0	209.0	133.0	0.0	0.0	T OUT 1630 hr
E. Final Flow	207.0	217.0	232.0	0.0	0.0	
F. Fl Shut-in	1170.0	1161.0	1180.0	0.0	0.0	
G. Final Hydro	1682.0	1692.0	1690.0	0.0	0.0	TOOL DATA-----
Inside/Outside	0	0	I			Tool Wt. 1800.00 lbs

RECOVERY

Tot Fluid	435.00 ft of	435.00 ft in DC and	0.00 ft in DP	Unseated Str Wt	50000.00 lbs
435.00	ft of Water			Bot Choke	0.75 in
0.00	ft of	100% water		Hole Size	8.87 in
0.00	ft of			D Col. ID	2.25 in
0.00	ft of			D. Pipe ID	3.80 in
0.00	ft of			D.C. Length	495.00 ft
0.00	ft of			D.P. Length	3079.00 ft
0.00	ft of RW .14 @ 70 deg =				
SALINITY	60000.00 P.P.M.	A.P.I. Gravity	0.00		

BLOW DESCRIPTION

Initial Flow:
 Weak surface blow steady throughout
 Final Flow:
 Weak surface return steady
 throughout

SAMPLES:
 SENT TO:

MUD DATA-----

Mud Type	Chemical
Weight	8.80 lb/c
Vis.	47.00 S/L
W.L.	7.60 in3
F.C.	0.00 in
Mud Drop N	
Amt. of fill	5.00 ft
Btm. H. Temp.	107.00 F
Hole Condition	Fair
% Porosity	0.00
Packer Size	6.75 in
No. of Packers	2
Cushion Amt.	0.00
Cushion Type	
Reversed Out N	
Tool Chased Y	5.00 ft
Tester	Rod Steinbrink
Co. Rep.	Paul Gunzelman
Contr.	Murfin
Rig #	3
Unit #	
Pump T.	

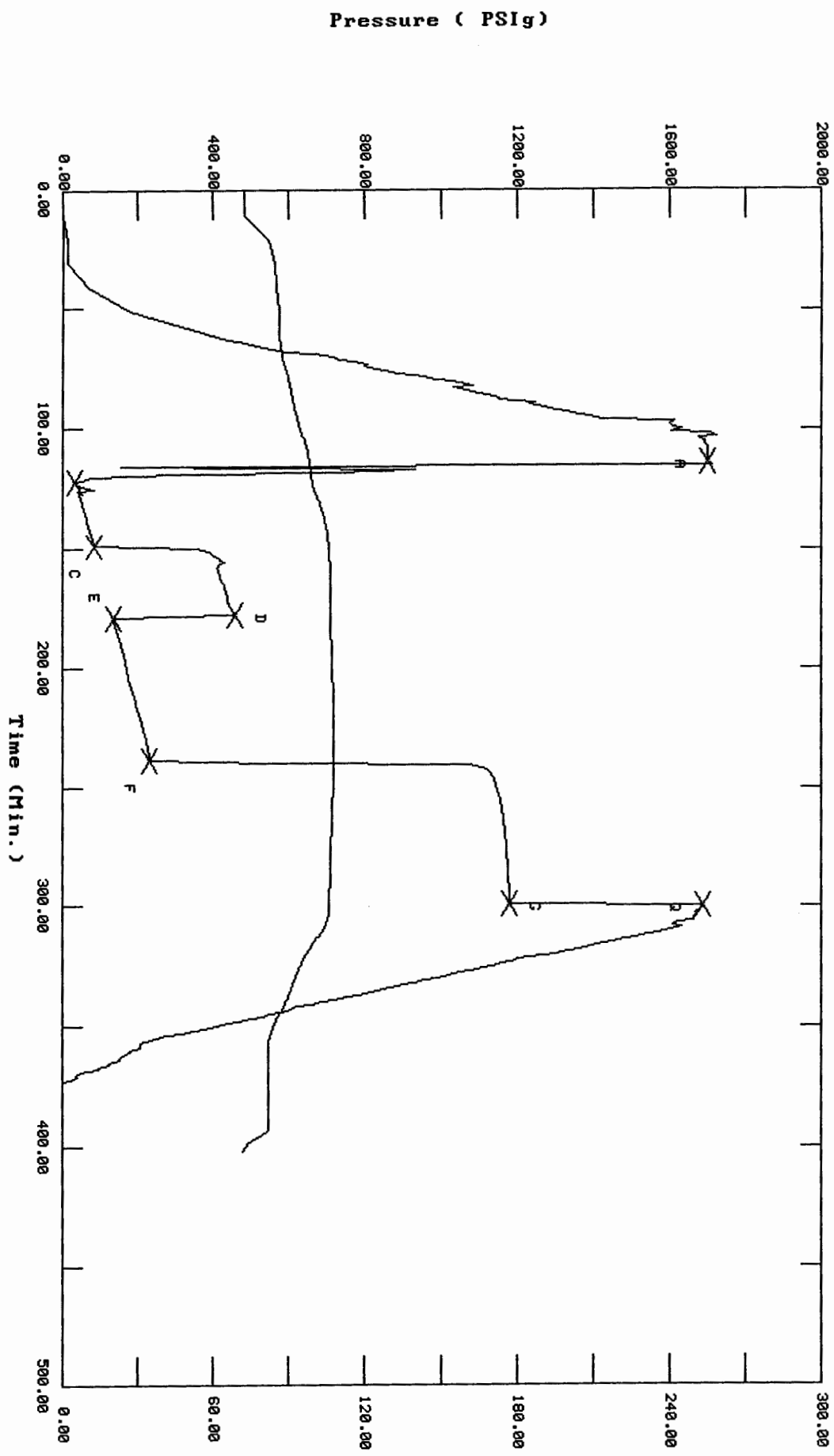
Test Successful: Y

13041 DST #2 Stites-McDonnell #1-31 Murfin Drilling Co.

TEST HISTORY

Flag Points

t (Min.)	P (PSig)
A: 0.00	1699.26
B: 0.00	31.25
C: 27.00	89.54
D: 29.00	457.31
E: 0.00	139.23
F: 60.00	232.54
G: 60.00	1180.67
Q: 0.00	1690.20



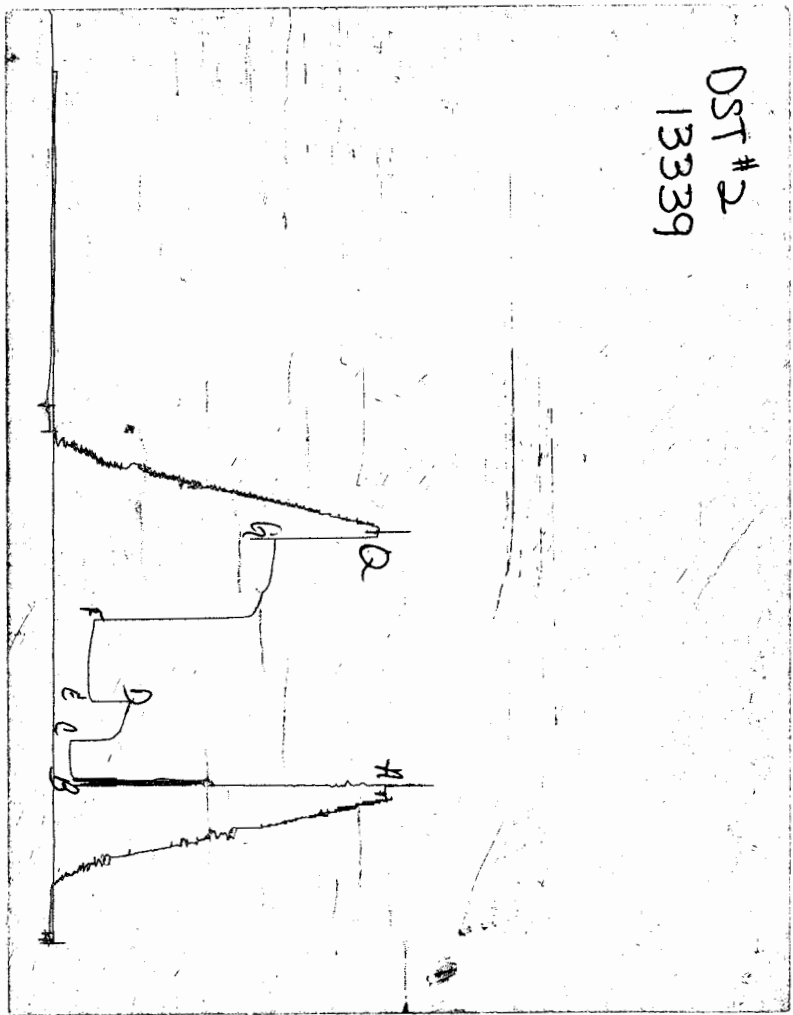
Temperature (DEG F)

Pressure (PSig)

Time (Min.)

CHART PAGE

DST # 2
13339



This is a photocopy of the actual AK-1 recorder chart

TRILOBITE TESTING L.L.C.

P.O. Box 362 • Hays, Kansas 67601

Nº 13041

Test Ticket

Well Name & No. Stites-McDonnell #1-31 Test No. 2 Date 9-19-00
Company Murfin Drlg Company Inc Zone Tested L/KC C-D
Address 250 N. Water #300 Wichita, KS. 67202 Elevation 2639 KB 2634 GL
Co. Rep / Geo. Paul Gunzelman Cont. Murfin #3 Est. Ft. of Pay Por. %
Location: Sec. 31 Twp. 2^S Rge. 26^W Co. Decatur State KS.
No. of Copies Distribution Sheet (Y, N) N Turnkey (Y, N) N Evaluation (Y, N)

Interval Tested 3570-3596 Initial Str Wt./Lbs. 50,000 Unseated Str Wt./Lbs. 50,000
Anchor Length 26' Wt. Set Lbs. 30,000 Wt. Pulled Loose/Lbs. 65,000
Top Packer Depth 3565 Tool Weight 1,800
Bottom Packer Depth 3570 Hole Size — 7 7/8" Rubber Size — 6 3/4"
Total Depth 3596 Wt. Pipe Run Drill Collar Run 495' (8.1)
Mud Wt. 8.8 LCM Vis. 47 WL 7.6 Drill Pipe Size 4 1/2" XH Ft. Run 3079' (49.1)
Blow Description IF: Weak surface blow steady throughout

FF: Weak surface return steady throughout.

Recovery — Total Feet 435' GIP Ft. in DC 435' Ft. in DP
Rec. Feet Of %gas %oil %water %mud
Rec. Feet Of %gas %oil %water %mud
Rec. 435' Feet Of Water %gas %oil %water %mud
Rec. Feet Of %gas %oil %water %mud
Rec. Feet Of %gas %oil %water %mud
BHT 107° °F Gravity °API D@ °F Corrected Gravity °API
RW .14 @ 70° °F Chlorides 60,000 ppm Recovery Chlorides 700 ppm System

	AK-1	Alpine	PSI Recorder No.	T-On Location
(A) Initial Hydrostatic Mud	<u>1722</u>	<u>1699</u>	<u>3246</u>	<u>0915 :25</u>
(B) First Initial Flow Pressure	<u>83</u>	<u>31</u>	(depth) <u>3572</u>	T-Started <u>0940</u>
(C) First Final Flow Pressure	<u>83</u>	<u>83</u>	PSI Recorder No. <u>13339</u>	T-Open <u>1136</u>
(D) Initial Shut-In Pressure	<u>415</u>	<u>457</u>	(depth) <u>3591</u>	T-Pulled <u>1436</u>
(E) Second Initial Flow Pressure	<u>187</u>	<u>133</u>	PSI Recorder No. <u> </u>	T-Out <u>1630</u>
(F) Second Final Flow Pressure	<u>207</u>	<u>232</u>	(depth) <u> </u>	T-Off Location <u>1730</u>
(G) Final Shut-in Pressure	<u>1170</u>	<u>1180</u>	PSI Initial Opening <u>30</u>	Test <u>650</u>
(Q) Final Hydrostatic Mud	<u>1682</u>	<u>1690</u>	PSI Initial Shut-in <u>30</u>	Jars <u>X 200</u>
			Final Flow <u>60</u>	Safety Joint <u>X 50</u>
			Final Shut-in <u>60</u>	Straddle <u> </u>

TRILOBITE TESTING L.L.C. SHALL NOT BE LIABLE FOR DAMAGE OF ANY KIND OF THE PROPERTY OR PERSONNEL OF THE ONE FOR WHOM A TEST IS MADE, OR FOR ANY LOSS SUFFERED OR SUSTAINED, DIRECTLY OR INDIRECTLY, THROUGH THE USE OF ITS EQUIPMENT, OR ITS STATEMENTS OR OPINION CONCERNING THE RESULTS OF ANY TEST. TOOLS LOST OR DAMAGED IN THE HOLE SHALL BE PAID FOR AT COST BY THE PARTY FOR WHOM THE TEST IS MADE.

Approved By Paul Gunzelman

Our Representative Rod Steinbrink

Circ. Sub X N/C
Sampler
Extra Packer
Elec. Rec. X 150
Mileage
Other
TOTAL PRICE \$ 1050

TRILOBITE TESTING L.L.C.

OPERATOR : Murfin Drilling Co. DATE 9-20-00
 WELL NAME: Stites-McDonnell #1-31 KB 2639.00 ft TICKET NO: 13042 DST #3
 LOCATION : 31-2S-26W Decatur co KS GR 2634.00 ft FORMATION: L/KC "J & K"
 INTERVAL : 3632.00 To 3724.00 ft TD 3724.00 ft TEST TYPE: CONVENTIONAL

RECORDER DATA

Mins	Field	1	2	3	4	TIME DATA-----
PF 30 Rec.	13339	13339	3246			PF Fr. 0836 to 0906 hr
SI 30 Range(Psi)	4000.0	4000.0	4995.0	0.0	0.0	IS Fr. 0906 to 0936 hr
SF 60 Clock(hrs)	12 HR	12 HR	ALP			SF Fr. 0936 to 1036 hr
FS 60 Depth(ft)	3719.0	3719.0	3634.0	0.0	0.0	FS Fr. 1036 to 1136 hr

	Field	1	2	3	4	
A. Init Hydro	1822.0	1826.0	1780.0	0.0	0.0	T STARTED 0622 hr
B. First Flow	62.0	90.0	23.0	0.0	0.0	T ON BOTM 0834 hr
B1. Final Flow	62.0	66.0	57.0	0.0	0.0	T OPEN 0836 hr
C. In Shut-in	1210.0	1204.0	1251.0	0.0	0.0	T PULLED 1136 hr
D. Init Flow	93.0	112.0	58.0	0.0	0.0	T OUT 1311 hr
E. Final Flow	104.0	95.0	97.0	0.0	0.0	
F. Fl Shut-in	1220.0	1227.0	1254.0	0.0	0.0	TOOL DATA-----
G. Final Hydro	1742.0	1775.0	1755.0	0.0	0.0	Tool Wt. 2000.00 lbs
Inside/Outside	0	0	I			Wt Set On Packer 30000.00 lbs

RECOVERY

Tot Fluid	200.00 ft of	200.00 ft in DC and	0.00 ft in DP	Unseated Str Wt	50000.00 lbs
50.00	ft of Free Oil			Bot Choke	0.75 in
90.00	ft of Oil cut mud			Hole Size	8.88 in
0.00	ft of 20%oil 80%mud			D Col. ID	2.25 in
60.00	ft of Oily water cut mud			D. Pipe ID	3.80 in
0.00	ft of 20% oil 20% water 60% mud			D.C. Length	495.00 ft
0.00	ft of			D.P. Length	3142.00 ft
0.00	ft of				
0.00	ft of				
0.00	ft of				
SALINITY	0.00 P.P.M.	A.P.I. Gravity	35.00		

BLOW DESCRIPTION

Initial Flow:
 Weak 1/4" blow throughout
 Final Flow:
 Weak surface blow throughout

SAMPLES:
 SENT TO:

MUD DATA-----

Mud Type	Chemical
Weight	9.00 lb/c
Vis.	53.00 S/L
W.L.	7.20 in3
F.C.	0.00 in
Mud Drop N	
Amt. of fill	0.00 ft
Btm. H. Temp.	103.00 F
Hole Condition	Good
% Porosity	0.00
Packer Size	6.75 in
No. of Packers	2
Cushion Amt.	0.00
Cushion Type	
Reversed Out N	
Tool Chased N	
Tester	Rod Steinbrink
Co. Rep.	Paul Gunzelman
Contr.	Murfin
Rig #	3
Unit #	
Pump T.	

Test Successful: Y

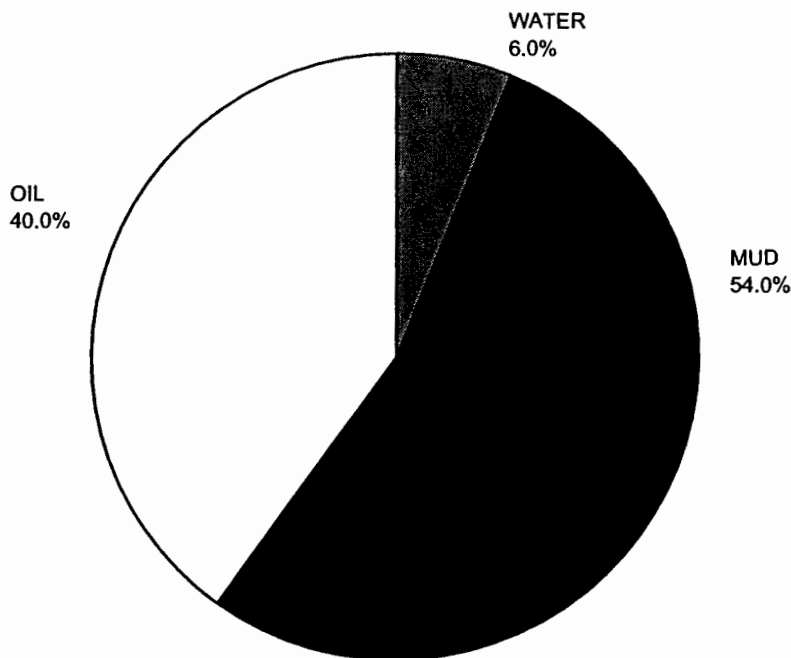
CALCULATED RECOVERY ANALYSIS

DST 3

TICKET 13042

SAMPLE #	TOTAL FEET	GAS		OIL		WATER		MUD	
		%	FEET	%	FEET	%	FEET	%	FEET
DRILL 1	0	0	0	0	0	0	0	0	0
PIPE 2	0	0	0	0	0	0	0	0	0
3	0	0	0	0	0	0	0	0	0
4	0	0	0	0	0	0	0	0	0
5	0	0	0	0	0	0	0	0	0
6	0	0	0	0	0	0	0	0	0
WEIGHT 1	0	0	0	0	0	0	0	0	0
PIPE 2	0	0	0	0	0	0	0	0	0
3	0	0	0	0	0	0	0	0	0
4	0	0	0	0	0	0	0	0	0
5	0	0	0	0	0	0	0	0	0
DRILL 1	50	0	0	100	50	0	0	0	0
COLLARS 2	90	0	0	20	18	0	0	80	72
3	60	0	0	20	12	20	12	60	36
4	0	0	0	0	0	0	0	0	0
5	0	0	0	0	0	0	0	0	0
TOTAL	200	0	0	0	80	0	12	0	108

BBL OIL= 0.3912 * HRS OPEN 1.5 = BBL/DAY 6.2592
 BBL WATER= 0.05868 * = 0.93888
 BBL MUD= 0.52812
 BBL GAS = 0

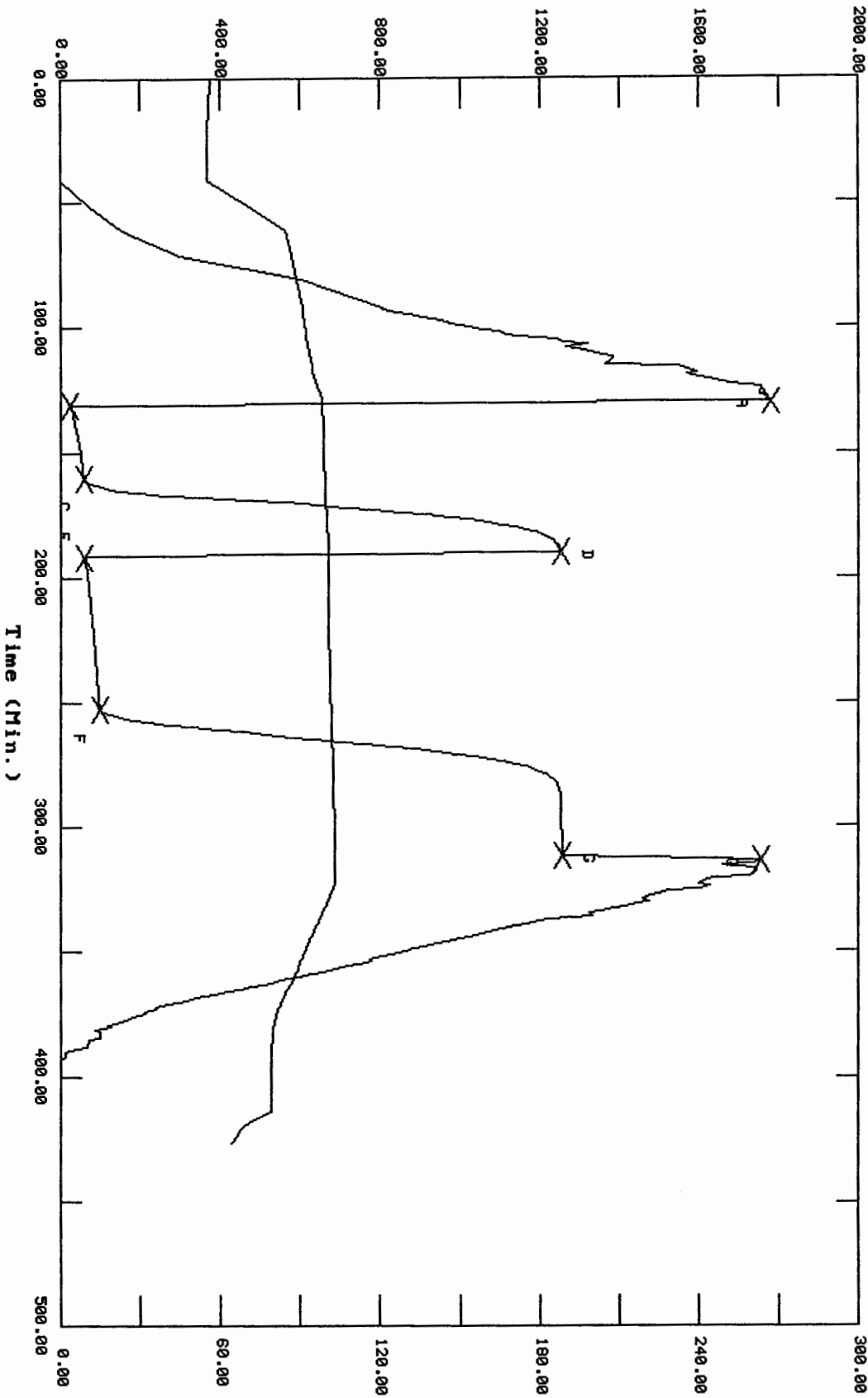


13042 DST#3 Stites-McDonnell #1-31 Murfin Drilling Co.

TEST HISTORY

Flag Points
 t(Min.) PK PSig)

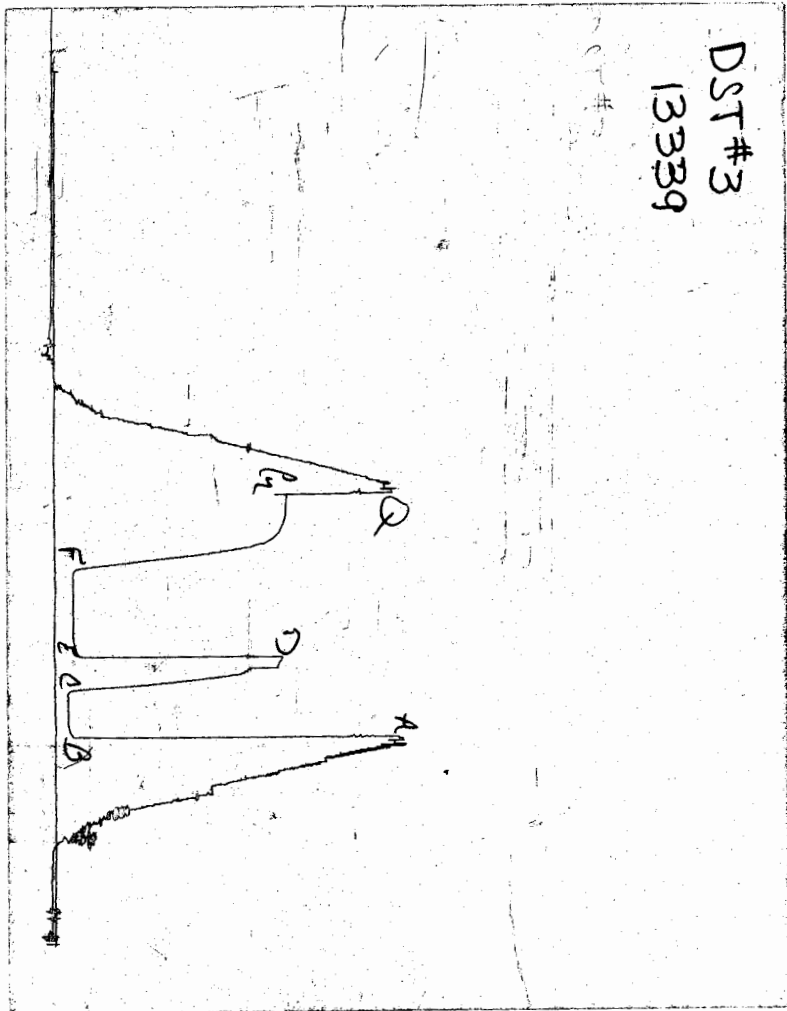
R:	0.00	1780.89
B:	0.00	23.18
C:	29.00	57.06
D:	30.00	1251.69
E:	0.00	58.92
F:	61.00	97.94
G:	59.00	1254.69
Q:	0.00	1755.77



Temperature (DEG F)

CHART PAGE

DST#3
13339



This is a photocopy of the actual AK-1 recorder chart

TRILOBITE TESTING L.L.C.

P.O. Box 362 • Hays, Kansas 67601

N^o 13042

Test Ticket

Well Name & No.	<u>Stites-McDonnell #1-31</u>	Test No.	<u>3</u>	Date	<u>9-20-00</u>
Company	<u>Murfin Drilling Company Inc.</u>	Zone Tested	<u>L/KC "J & K"</u>		
Address	<u>250 N Water #300 Wichita, KS 67202</u>	Elevation	<u>2639</u>	KB	<u>2634</u> GL
Co. Rep / Geo.	<u>Paul Gunzelman</u>	Cont.	<u>Murfin #3</u>	Est. Ft. of Pay	<u> </u> Por. <u> </u> %
Location: Sec.	<u>31</u>	Twp.	<u>2^S</u>	Rge.	<u>26^W</u> Co. <u>Decatur</u> State <u>KS.</u>
No. of Copies	<u> </u>	Distribution Sheet (Y, N)	<u>N</u>	Turnkey (Y, N)	<u>N</u> Evaluation (Y, N) <u> </u>

Interval Tested	<u>3632 - 3724</u>	Initial Str Wt./Lbs.	<u>50,000</u>	Unseated Str Wt./Lbs.	<u>50,000</u>
Anchor Length	<u>92'</u>	Wt. Set Lbs.	<u>30,000</u>	Wt. Pulled Loose/Lbs.	<u>65,000</u>
Top Packer Depth	<u>3627</u>	Tool Weight	<u>2,000</u>		
Bottom Packer Depth	<u>3632</u>	Hole Size — 7 7/8"	<u> </u>	Rubber Size — 6 3/4"	<u> </u>
Total Depth	<u>3724</u>	Wt. Pipe Run	<u> </u>	Drill Collar Run	<u>495' (8.1)</u>
Mud Wt. <u>9.0</u> LCM <u> </u> Vis. <u>53</u> WL <u>7.2</u>		Drill Pipe Size	<u>4 1/2" XH</u>	Ft. Run	<u>31 342 (50.1)</u>
Blow Description	<u>IF: Weak 1/4" blow throughout.</u>				

FF: Weak surface blow throughout

Recovery — Total Feet	<u>200'</u>	GIP	<u> </u>	Ft. in DC	<u>200'</u>	Ft. in DP	<u> </u>
Rec. <u> </u>	Feet Of <u> </u>	%gas	<u> </u>	%oil	<u> </u>	%water	<u> </u>
Rec. <u>50'</u>	Feet Of <u>Free Oil</u>	%gas	<u>100</u>	%oil	<u> </u>	%water	<u> </u>
Rec. <u>90'</u>	Feet Of <u>OCM</u>	%gas	<u>20</u>	%oil	<u> </u>	%water	<u>80</u>
Rec. <u>60'</u>	Feet Of <u>OWCM</u>	%gas	<u>20</u>	%oil	<u>20</u>	%water	<u>60</u>
Rec. <u> </u>	Feet Of <u> </u>	%gas	<u> </u>	%oil	<u> </u>	%water	<u> </u>
BHT <u>103°</u>	°F Gravity <u>35</u>	°API D@ <u>60°</u>	°F Corrected Gravity <u>35</u>	°API	<u> </u>		
RW <u> </u>	@ <u> </u>	°F Chlorides <u> </u>	ppm Recovery Chlorides <u>1,500</u>	ppm System	<u> </u>		

	AK-1	Alpine	PSI	Recorder No.	T-On Location
(A) Initial Hydrostatic Mud	<u>1822</u>	<u>1780</u>		<u>3246</u>	<u>0600</u>
(B) First Initial Flow Pressure	<u>62</u>	<u>23</u>	PSI (depth)	<u>3634</u>	<u>0622</u>
(C) First Final Flow Pressure	<u>62</u>	<u>57</u>	PSI Recorder No.	<u>13339</u>	<u>0836</u>
(D) Initial Shut-in Pressure	<u>1210</u>	<u>1251</u>	PSI (depth)	<u>3719</u>	<u>1136</u>
(E) Second Initial Flow Pressure	<u>93</u>	<u>58</u>	PSI Recorder No.	<u> </u>	<u>1315</u>
(F) Second Final Flow Pressure	<u>104</u>	<u>97</u>	PSI (depth)	<u> </u>	<u>1415</u>
(G) Final Shut-in Pressure	<u>1220</u>	<u>1254</u>	PSI Initial Opening	<u>30</u>	Test <u>650</u>
(Q) Final Hydrostatic Mud	<u>1742</u>	<u>1755</u>	PSI Initial Shut-in	<u>30</u>	Jars <u>X 200</u>
			Final Flow	<u>60</u>	Safety Joint <u>X 50</u>
			Final Shut-in	<u>60</u>	Straddle <u> </u>

TRILOBITE TESTING L.L.C. SHALL NOT BE LIABLE FOR DAMAGE OF ANY KIND OF THE PROPERTY OR PERSONNEL OF THE ONE FOR WHOM A TEST IS MADE, OR FOR ANY LOSS SUFFERED OR SUSTAINED, DIRECTLY OR INDIRECTLY, THROUGH THE USE OF ITS EQUIPMENT, OR ITS STATEMENTS OR OPINION CONCERNING THE RESULTS OF ANY TEST. TOOLS LOST OR DAMAGED IN THE HOLE SHALL BE PAID FOR AT COST BY THE PARTY FOR WHOM THE TEST IS MADE.

Approved By Paul Gunzelman

Our Representative Rod Steinbrink

Circ. Sub X NIC
Sampler
Extra Packer
Elec. Rec. X 150
Mileage
Other
TOTAL PRICE \$ 1050
ent cap 12 601