



**TRILOBITE TESTING, INC**

# DRILL STEM TEST REPORT

Cholla Production LLC  
 7851 S Elati St. STE 201  
 Littleton, CO 80120  
 ATTN: Bill Goff

**Kyte - Jording #1-14**  
**14/2s/30w Decatur KS**  
 Job Ticket: 040067 **DST#: 1**  
 Test Start: 2010.11.05 @ 03:52:00

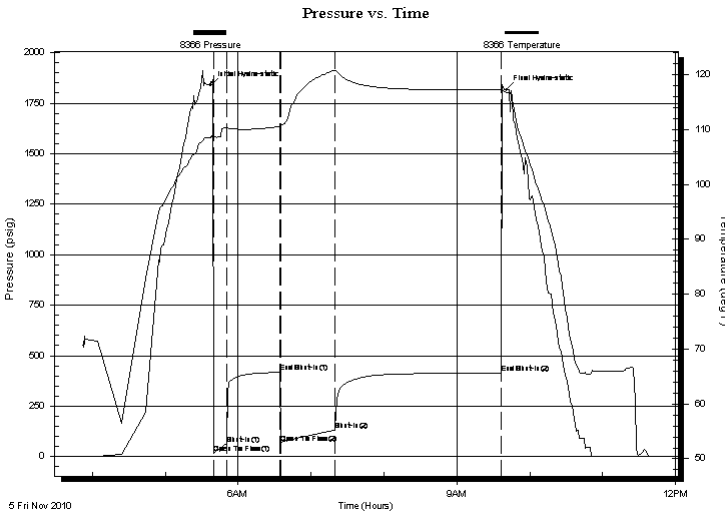
## GENERAL INFORMATION:

Formation: **Lans. "B"**  
 Deviated: No Whipstock: ft (KB)  
 Time Tool Opened: 05:40:00  
 Time Test Ended: 11:39:00  
 Interval: **3816.00 ft (KB) To 3850.00 ft (KB) (TVD)**  
 Total Depth: 3850.00 ft (KB) (TVD)  
 Hole Diameter: 7.88 inches Hole Condition: Fair  
 Test Type: Conventional Bottom Hole  
 Tester: James Winder  
 Unit No: 46  
 Reference Elevations: 2823.00 ft (KB)  
 2818.00 ft (CF)  
 KB to GR/CF: 5.00 ft

**Serial #: 8366 Inside**  
 Press @ Run Depth: 131.34 psig @ 3817.00 ft (KB) Capacity: 8000.00 psig  
 Start Date: 2010.11.05 End Date: 2010.11.05 Last Calib.: 2010.11.05  
 Start Time: 03:52:05 End Time: 11:38:59 Time On Btm: 2010.11.05 @ 05:37:00  
 Time Off Btm: 2010.11.05 @ 09:40:30

**TEST COMMENT:** IF: Blow built to 3 1/4"  
 IS: Bled off, No blow back  
 FF: Blow built to BOB (11 1/2") in 38 min.  
 FS: Bled off, No blow back

## PRESSURE SUMMARY



Time (Min.)	Pressure (psig)	Temp (deg F)	Annotation
0	1838.97	108.53	Initial Hydro-static
3	17.94	108.75	Open To Flow (1)
14	62.61	110.18	Shut-In(1)
58	416.96	110.53	End Shut-In(1)
59	64.92	110.65	Open To Flow (2)
103	131.34	120.78	Shut-In(2)
240	414.27	117.33	End Shut-In(2)
244	1816.89	116.84	Final Hydro-static

## Recovery

Length (ft)	Description	Volume (bbl)
62.00	WCM w/trace oil 64%m, 36%w	0.30
63.00	MCW w/trace oil 87%w, 13%m	0.31
120.00	MW w/trace oil 58%w, 42%m	1.68
0.00	Sampler = 2000 mL 210 PSI	0.00
0.00	Sampler = WM w/trace oil 57%m, 43%w	0.00

## Gas Rates

Choke (inches)	Pressure (psig)	Gas Rate (Mcf/d)



**TRILOBITE  
TESTING, INC**

# DRILL STEM TEST REPORT

**FLUID SUMMARY**

Cholla Production LLC

**Kyte - Jording #1-14**

7851 S Elati St. STE 201  
Littleton, CO 80120

**14/2s/30w Decatur KS**

Job Ticket: 040067

**DST#: 1**

ATTN: Bill Goff

Test Start: 2010.11.05 @ 03:52:00

## Mud and Cushion Information

Mud Type: Gel Chem

Cushion Type:

Oil API:

deg API

Mud Weight: 9.00 lb/gal

Cushion Length:

ft

Water Salinity:

40000 ppm

Viscosity: 56.00 sec/qt

Cushion Volume:

bbbl

Water Loss: 7.40 in<sup>3</sup>

Gas Cushion Type:

Resistivity: ohm.m

Gas Cushion Pressure:

psig

Salinity: 1000.00 ppm

Filter Cake: 1.00 inches

## Recovery Information

Recovery Table

Length ft	Description	Volume bbbl
62.00	WCM w/trace oil 64%m, 36%w	0.305
63.00	MCW w/trace oil 87%w, 13%m	0.310
120.00	MW w/trace oil 58%w, 42%m	1.683
0.00	Sampler = 2000 mL 210 PSI	0.000
0.00	Sampler = WM w/trace oil 57%m, 43%w	0.000

Total Length: 245.00 ft      Total Volume: 2.298 bbl

Num Fluid Samples: 0

Num Gas Bombs: 0

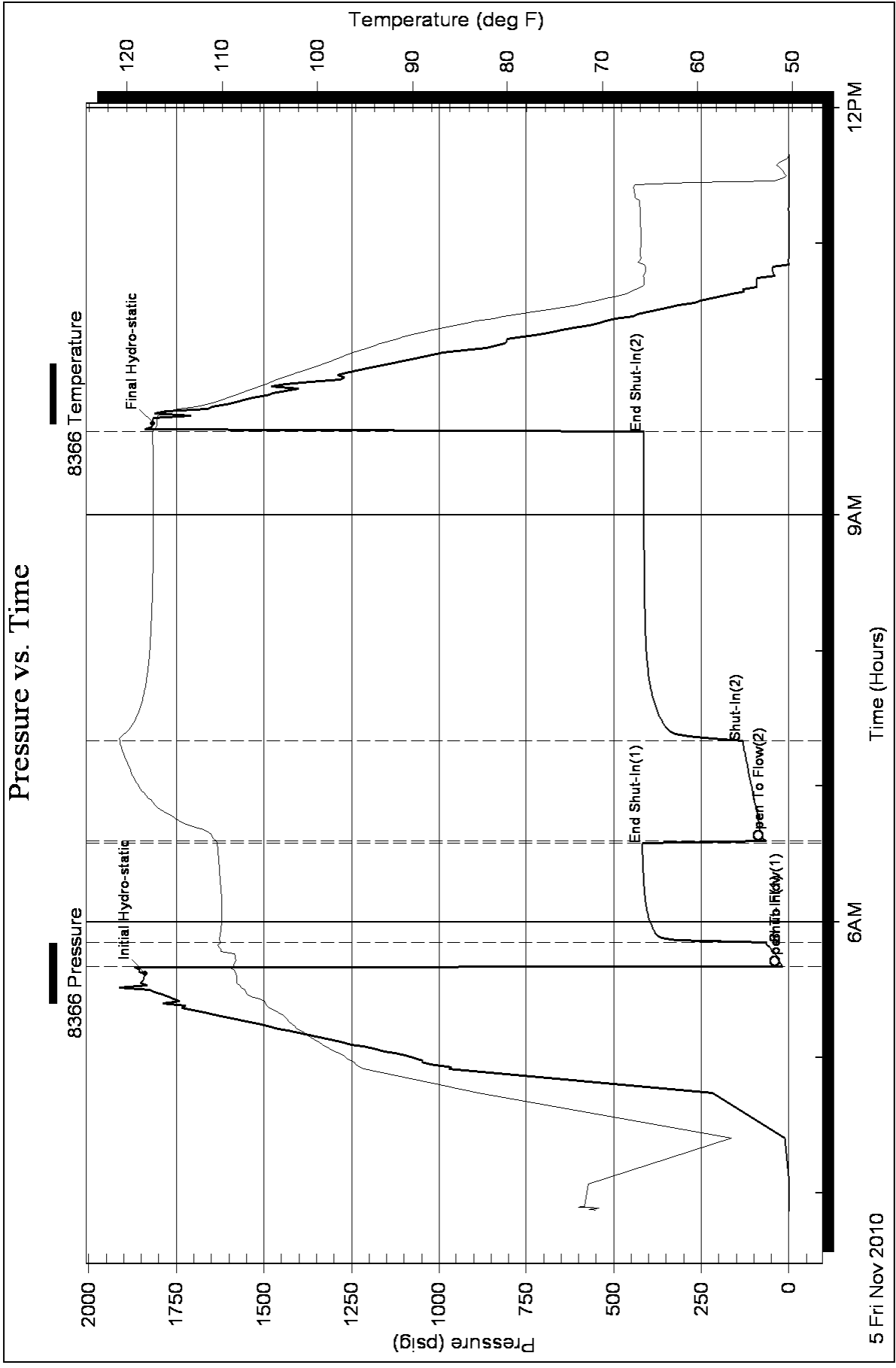
Serial #:

Laboratory Name:

Laboratory Location:

Recovery Comments: RW = .261 ohms @ 50.6 deg F

Chlorides = 40,000 ppm





**TRILOBITE  
TESTING, INC**

# DRILL STEM TEST REPORT

Cholla Production LLC  
7851 S Elati St. STE 201  
Littleton, CO 80120  
ATTN: Bill Goff

**Kyte - Jording #1-14**  
**14/2s/30w Decatur KS**  
Job Ticket: 040068 **DST#: 2**  
Test Start: 2010.11.05 @ 20:45:00

## GENERAL INFORMATION:

Formation: **Lans. "G - H"**  
Deviated: No Whipstock: ft (KB)  
Time Tool Opened: 23:51:30  
Time Test Ended: 04:56:30  
Interval: **3862.00 ft (KB) To 3937.00 ft (KB) (TVD)**  
Total Depth: 3937.00 ft (KB) (TVD)  
Hole Diameter: 7.88 inches Hole Condition: Fair  
Reference Elevations: 2823.00 ft (KB)  
2818.00 ft (CF)  
KB to GR/CF: 5.00 ft  
Test Type: Conventional Bottom Hole  
Tester: James Winder  
Unit No: 46

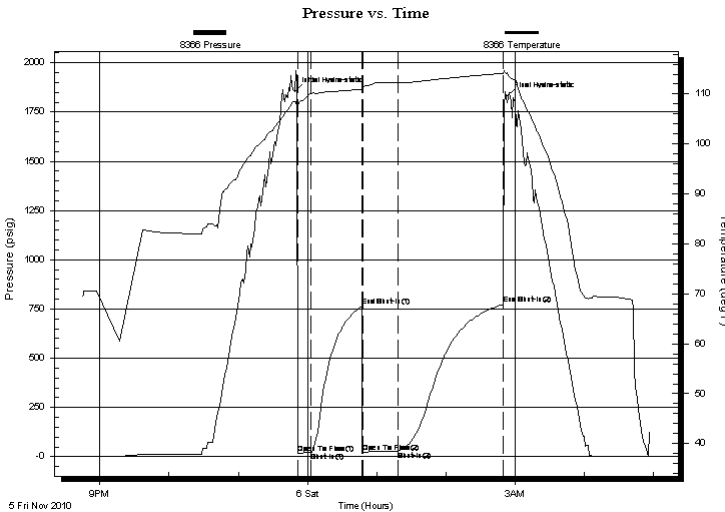
## Serial #: 8366

Inside

Press @ Run Depth: 27.10 psig @ 3863.00 ft (KB) Capacity: 8000.00 psig  
Start Date: 2010.11.05 End Date: 2010.11.06 Last Calib.: 2010.11.06  
Start Time: 20:45:05 End Time: 04:56:29 Time On Btm: 2010.11.05 @ 23:49:00  
Time Off Btm: 2010.11.06 @ 02:52:30

TEST COMMENT: IF: Blow built to 1"  
IS: Bled off, No blow back  
FF: Surface blow at 10 min., dead at 15 min.  
FS: No blow back

## PRESSURE SUMMARY



Time (Min.)	Pressure (psig)	Temp (deg F)	Annotation
0	1854.33	108.46	Initial Hydro-static
3	18.48	107.74	Open To Flow (1)
14	20.94	110.12	Shut-In(1)
58	763.31	110.97	End Shut-In(1)
59	23.01	111.40	Open To Flow (2)
89	27.10	112.24	Shut-In(2)
181	773.57	114.16	End Shut-In(2)
184	1829.04	114.21	Final Hydro-static

## Recovery

Length (ft)	Description	Volume (bbl)
10.00	SOCM 98%m, 2‰	0.05
0.00	Sampler = 160 PSI	0.00
0.00	Just enough fluid recovery for grind out	0.00
0.00	SOCM 94%m, 6‰	0.00

## Gas Rates

	Choke (inches)	Pressure (psig)	Gas Rate (Mcf/d)



**TRILOBITE  
TESTING, INC**

# DRILL STEM TEST REPORT

**FLUID SUMMARY**

Cholla Production LLC

**Kyte - Jording #1-14**

7851 S Elati St. STE 201  
Littleton, CO 80120

**14/2s/30w Decatur KS**

Job Ticket: 040068

**DST#: 2**

ATTN: Bill Goff

Test Start: 2010.11.05 @ 20:45:00

## Mud and Cushion Information

Mud Type: Gel Chem

Cushion Type:

Oil API:

deg API

Mud Weight: 9.00 lb/gal

Cushion Length:

ft

Water Salinity:

ppm

Viscosity: 56.00 sec/qt

Cushion Volume:

bbbl

Water Loss: 7.39 in<sup>3</sup>

Gas Cushion Type:

Resistivity: ohm.m

Gas Cushion Pressure:

psig

Salinity: 1000.00 ppm

Filter Cake: 1.00 inches

## Recovery Information

Recovery Table

Length ft	Description	Volume bbbl
10.00	SOCM 98% <sub>m</sub> , 2% <sub>o</sub>	0.049
0.00	Sampler = 160 PSI	0.000
0.00	Just enough fluid recovery for grind out	0.000
0.00	SOCM 94% <sub>m</sub> , 6% <sub>o</sub>	0.000

Total Length: 10.00 ft      Total Volume: 0.049 bbl

Num Fluid Samples: 0

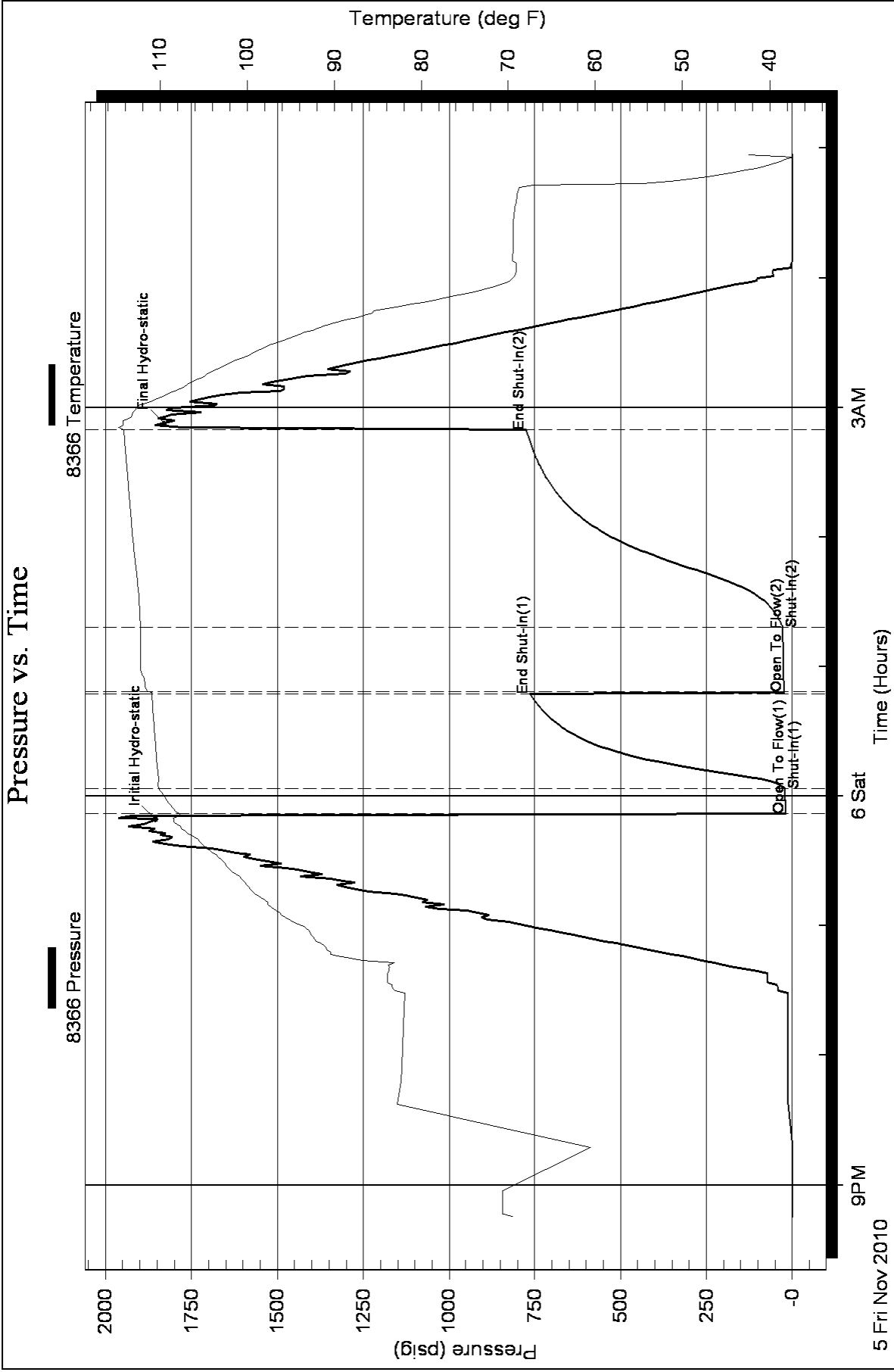
Num Gas Bombs: 0

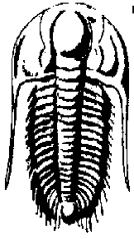
Serial #:

Laboratory Name:

Laboratory Location:

Recovery Comments:





**TRILOBITE  
TESTING, INC.**

# DRILL STEM TEST REPORT

Cholla Production LLC  
7851 S Elati St. STE 201  
Littleton, CO 80120  
ATTN: Bill Goff

**Kyte - Jording #1-14**  
**14/2s/30w Decatur KS**  
Job Ticket: 040069 **DST#: 3**  
Test Start: 2010.11.06 @ 12:30:00

## GENERAL INFORMATION:

Formation: **Lans. "J"**  
Deviated: No Whipstock: ft (KB) Test Type: Conventional Bottom Hole  
Time Tool Opened: 14:41:30 Tester: James Winder  
Time Test Ended: 19:15:30 Unit No: 46  
**Interval: 3930.00 ft (KB) To 3970.00 ft (KB) (TVD)** Reference Elevations: 2823.00 ft (KB)  
Total Depth: 3970.00 ft (KB) (TVD) 2818.00 ft (CF)  
Hole Diameter: 7.88 inches Hole Condition: Fair KB to GR/CF: 5.00 ft

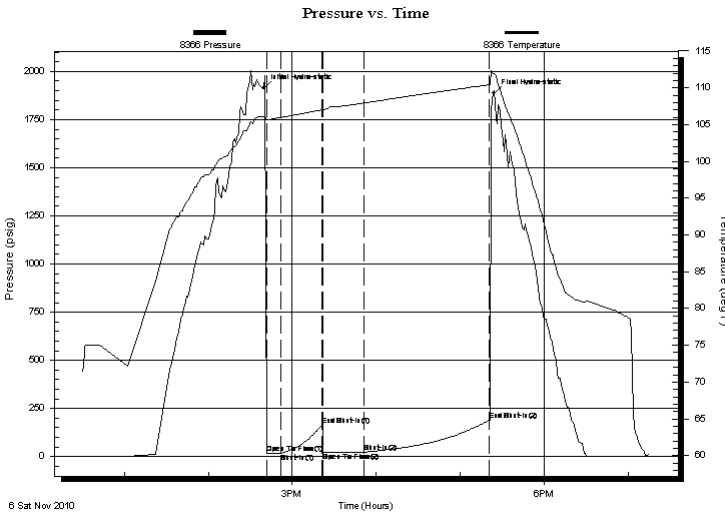
## Serial #: 8366

Inside

Press @ Run Depth: 22.85 psig @ 3931.00 ft (KB) Capacity: 8000.00 psig  
Start Date: 2010.11.06 End Date: 2010.11.06 Last Calib.: 2010.11.06  
Start Time: 12:30:05 End Time: 19:15:29 Time On Btm: 2010.11.06 @ 14:39:30  
Time Off Btm: 2010.11.06 @ 17:24:00

**TEST COMMENT:** IF: Blow built to 1/4"  
IS: Bled off, No blow back  
FF: No blow  
FS: No blow back

## PRESSURE SUMMARY



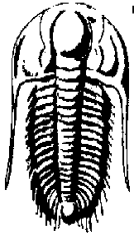
Time (Min.)	Pressure (psig)	Temp (deg F)	Annotation
0	1911.05	106.11	Initial Hydro-static
2	18.14	105.66	Open To Flow (1)
13	19.51	105.97	Shut-In(1)
42	163.98	107.01	End Shut-In(1)
43	19.98	106.98	Open To Flow (2)
72	22.85	107.94	Shut-In(2)
162	190.37	110.42	End Shut-In(2)
165	1885.16	111.95	Final Hydro-static

## Recovery

Length (ft)	Description	Volume (bbl)
2.00	SOCM 92% <sub>m</sub> , 8% <sub>o</sub>	0.01
0.00	Sampler - No pressure on guage	0.00
0.00	Sampler - 250 mL SOCM 98% <sub>m</sub> , 2% <sub>o</sub>	0.00

## Gas Rates

Choke (inches)	Pressure (psig)	Gas Rate (Mcf/d)



**TRILOBITE  
TESTING, INC.**

# DRILL STEM TEST REPORT

**FLUID SUMMARY**

Cholla Production LLC

**Kyte - Jording #1-14**

7851 S Elati St. STE 201  
Littleton, CO 80120

**14/2s/30w Decatur KS**

Job Ticket: 040069

**DST#: 3**

ATTN: Bill Goff

Test Start: 2010.11.06 @ 12:30:00

## Mud and Cushion Information

Mud Type: Gel Chem

Cushion Type:

Oil API:

deg API

Mud Weight: 9.00 lb/gal

Cushion Length:

ft

Water Salinity:

ppm

Viscosity: 55.00 sec/qt

Cushion Volume:

bbbl

Water Loss: 7.59 in<sup>3</sup>

Gas Cushion Type:

Resistivity: ohm.m

Gas Cushion Pressure:

psig

Salinity: 2300.00 ppm

Filter Cake: 1.00 inches

## Recovery Information

Recovery Table

Length ft	Description	Volume bbbl
2.00	SOCM 92% <sub>m</sub> , 8% <sub>o</sub>	0.010
0.00	Sampler - No pressure on guage	0.000
0.00	Sampler - 250 mL SOCM 98% <sub>m</sub> , 2% <sub>o</sub>	0.000

Total Length: 2.00 ft      Total Volume: 0.010 bbl

Num Fluid Samples: 0

Num Gas Bombs: 0

Serial #:

Laboratory Name:

Laboratory Location:

Recovery Comments:

### Pressure vs. Time

