

**WESTERN TESTING CO., INC.**

P.O. BOX 1599 — WICHITA, KANSAS 67201

DATE 05/24/84

GUNNER OIL COMPANY
519 PARKE
PRATT, KANSAS 67124

WELL REPORT NO. 4385
UNIT NO.
DISTRICT 12

FOR CUSTOMER'S USE ONLY

REGISTER NO.

VOUCHER NO.

TERMS APPROVED

PRICE APPROVED

CALCULATIONS CHECKED

ADJUSTMENTS

ACCOUNTING DISTRIBUTION

AUDITED

FINAL APPROVAL

YOUR ORDER NO.

OWNER

CONTRACTOR

WELL NO.

FARM

SECTION

TWP.

RANGE

1

GIBSON

BARBER

KS

1

30S

12W

DRILL STEM TEST FROM 2738' TO 2760' TOTAL DEPTH 2760' (TEST 1) \$ 550.00

TOTAL \$ 550.00

DISCOUNT

\$ 5.50

1% DISCOUNT ALLOWED ON THIS INVOICE IF PAID
BY THE 20TH OF THE FOLLOWING MONTH.

PLEASE INCLUDE OUR INVOICE NUMBER
WITH YOUR REMITTANCE

INVOICE NUMBER

4385

SEND ALL REMITTANCES TO POST OFFICE BOX 1599, WICHITA, KANSAS 67201



WESTERN TESTING CO., INC.
FORMATION TESTING

TICKET NO. 4385

P. O. BOX 1599 PHONE (316) 262-5861

WICHITA, KANSAS 67201

Elevation

Formation

Indian Cave

Eff. Pay - Ft.

6140

District

Pratt

Date

5/24/84

Customer Order No. -

COMPANY NAME

Gunner O. Co

ADDRESS

519 Parke, Pratt 67124

LEASE AND WELL NO.

Gibson #1

COUNTY

Barber

STATE

Ks

Sec. 1

Twp. 30

Rge. 12W

Mail Invoice To

Same #1 GIBSON

No. Copies Requested

5

Mail Charts To

Co. Name

Same

Address

No. Copies Requested

5

Formation Test No.

1

Interval Tested From

2738

ft. to

2760

ft. Total Depth

2760

ft.

Packer Depth

2733

ft.

Size

6 1/8

in.

Packer Depth

-

ft.

Size

-

in.

Packer Depth

2738

ft.

Size

6 1/8

in.

Packer Depth

-

ft.

Size

-

in.

Depth of Selective Zone Set

Top Recorder Depth (Inside)

2749

ft.

Recorder Number

13547

Cap.

4225

Bottom Recorder Depth (Outside)

2752

ft.

*

Recorder Number

13552

Cap.

4050

Below Saddle Recorder Depth

-

ft.

Recorder Number

-

Cap.

-

Drilling Contractor

Aldeparan Rig #4

Drill Collar Length

562

I. D.

2 1/4

in.

Mud Type

Premix

Viscosity

32

Weight Pipe Length

-

I. D.

-

in.

Weight

9.2

Water Loss

N.C.

cc.

Drill Pipe Length

2155

I. D.

3.8

in.

Chlorides

35,000

P.P.M.

Test Tool Length

21

ft.

Tool Size

5/20P

in.

Jars: Make

-

Serial Number

-

Anchor Length

22

ft.

Size

5/20P

in.

Did Well Flow?

No

Reversed Out

No

Surface Choke Size

3/4

in.

Bottom Choke Size

3/4

in.

Main Hole Size

7 1/8

in.

Tool Joint Size

4 1/2 FH

in.

Blow:

Weak increased to strong blow on first flow period
Strong blow throughout second flow period

Recovered

20

ft. of

Only Mud

Recovered

ft. of

Recovered

ft. of

Recovered

ft. of

Recovered

ft. of

Chlorides

P.P.M. Sample Jars used

Remarks:

Read bottom Chart

Time On Location

4:00

A.M.

Time Pick Up Tool

4:30

A.M.

Time Off Location

10:30

A.M.

Time Set Packer(s)

6:30

A.M.

Time Started Off Bottom

8:30

A.M.

Maximum Temperature

106°

Initial Hydrostatic Pressure

Minutes

30

(A)

1368

P.S.I.

Initial Flow Period

Minutes

30

(B)

60

P.S.I. to (C)

60

P.S.I.

Initial Closed In Period

Minutes

30

(D)

182

P.S.I.

Final Flow Period

Minutes

30

(E)

60

P.S.I. to (F)

60

P.S.I.

Final Closed In Period

Minutes

30

(G)

182

P.S.I.

Final Hydrostatic Pressure

Minutes

30

(H)

1348

P.S.I.

COMPANY TERMS

Western Testing Co., Inc. shall not be liable for damages of any kind to the property or personnel of the one for whom a test is made or for any loss suffered or sustained directly or indirectly through the use of its equipment, of its statements or opinion concerning the results of any test. Tools lost or damaged in the hole shall be paid at cost by the party for whom the test is made.

All charges subject to 12% interest after 60 days from date of invoice. Any expense incurred for collection will be added to the original amount.

Test Approved By

George M. Dineen

Signature of Customer or his authorized representative

Western Representative

Jim Warden Thank You

FIELD INVOICE

Open Hole Test

\$

1850.00

Misrun

\$

Straddle Test

\$

Jars

\$

Selective Zone

\$

Safety Joint

\$

Standby

\$

Evaluation

\$

Extra Packer

\$

Circ. Sub.

\$

Mileage

\$

Fluid Sampler

\$

Extra Charts

\$

Insurance

\$

Telecopier

\$

TOTAL

\$

500.00

WESTERN TESTING CO., INC.

Pressure Data

Date 5-24

Test Ticket No. 4385

Recorder No. 13552

Capacity _____ Location _____ Ft.

Clock No. _____ Elevation _____ Well Temperature _____ °F

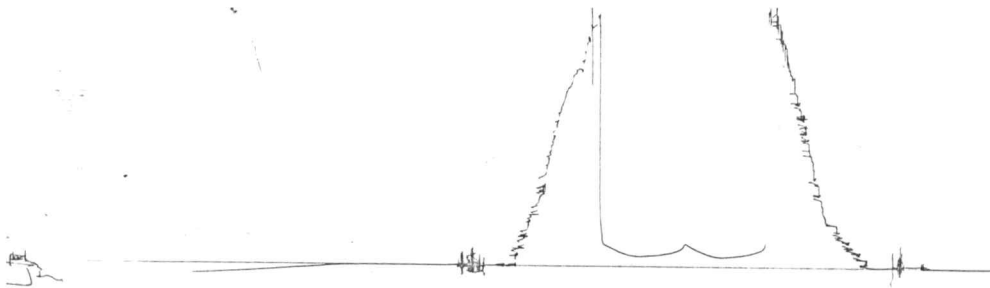
Point	Pressure	Time Given	Time Computed
A Initial Hydrostatic Mud <u>1368</u>	P.S.I.		
B First Initial Flow Pressure <u>56</u>	P.S.I.	<u>30</u> Mins.	<u>30</u> Mins.
C First Final Flow Pressure <u>57</u>	P.S.I.	<u>30</u> Mins.	<u>30</u> Mins.
D Initial Closed-in Pressure <u>183</u>	P.S.I.	<u>30</u> Mins.	<u>30</u> Mins.
E Second Initial Flow Pressure <u>63</u>	P.S.I.	<u>30</u> Mins.	<u>27</u> Mins.
F Second Final Flow Pressure <u>63</u>	P.S.I.		
G Final Closed-in Pressure <u>176</u>	P.S.I.		
H Final Hydrostatic Mud <u>1352</u>	P.S.I.		

PRESSURE BREAKDOWN

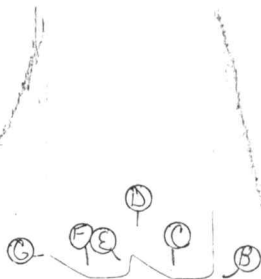
First Flow Pressure		Initial Shut-In		Second Flow Pressure		Final Shut-In	
Breakdown: <u>7</u> Inc.		Breakdown: <u>11</u> Inc.		Breakdown: <u>7</u> Inc.		Breakdown: <u>10</u> Inc.	
of <u>5</u> mins. and a		of <u>3</u> mins. and a		of <u>5</u> mins. and a		of <u>3</u> mins. and a	
final inc. of <u>0</u> Min.		final inc. of <u>0</u> Min.		final inc. of <u>0</u> Min.		final inc. of <u>0</u> Min.	
Point Mins.	Press.	Point Minutes	Press.	Point Minutes	Press.	Point Minutes	Press.
P 1 <u>0</u>	<u>56</u>	<u>0</u>	<u>57</u>	<u>0</u>	<u>63</u>	<u>0</u>	<u>63</u>
P 2 <u>5</u>	<u>5</u>	<u>3</u>	<u>69</u>	<u>5</u>	<u>5</u>	<u>3</u>	<u>74</u>
P 3 <u>10</u>	<u>56</u>	<u>6</u>	<u>79</u>	<u>10</u>	<u>5</u>	<u>6</u>	<u>85</u>
P 4 <u>15</u>	<u>57</u>	<u>9</u>	<u>90</u>	<u>15</u>	<u>63</u>	<u>9</u>	<u>98</u>
P 5 <u>20</u>	<u>57</u>	<u>12</u>	<u>103</u>	<u>20</u>	<u>63</u>	<u>12</u>	<u>111</u>
P 6 <u>25</u>	<u>57</u>	<u>15</u>	<u>116</u>	<u>25</u>	<u>63</u>	<u>15</u>	<u>124</u>
P 7 <u>30</u>	<u>57</u>	<u>18</u>	<u>131</u>	<u>30</u>	<u>63</u>	<u>18</u>	<u>138</u>
P 8 <u>35</u>		<u>21</u>	<u>145</u>	<u>35</u>		<u>21</u>	<u>151</u>
P 9 <u>40</u>		<u>24</u>	<u>162</u>	<u>40</u>		<u>24</u>	<u>164</u>
P10 <u>45</u>		<u>27</u>	<u>176</u>	<u>45</u>		<u>27</u>	<u>176</u>
P11 <u>50</u>		<u>30</u>	<u>183</u>	<u>50</u>		<u>30</u>	
P12 <u>55</u>		<u>33</u>		<u>55</u>		<u>33</u>	
P13 <u>60</u>		<u>36</u>		<u>60</u>		<u>36</u>	
P14		<u>39</u>		<u>65</u>		<u>39</u>	
P15		<u>42</u>		<u>70</u>		<u>42</u>	
P16		<u>45</u>		<u>75</u>		<u>45</u>	
P17		<u>48</u>		<u>80</u>		<u>48</u>	
P18		<u>51</u>		<u>85</u>		<u>51</u>	
P19		<u>54</u>		<u>90</u>		<u>54</u>	
P20		<u>57</u>				<u>57</u>	
		<u>60</u>				<u>60</u>	

TKT # 4385

I



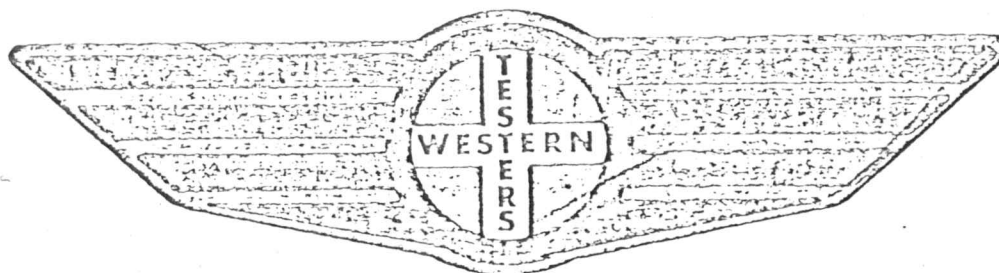
TKT # 4385



FORMATION

TEST

REPORT



Home Office:

Wichita, Kansas 67201

P.O. Box 1599

Phone (316) 262-5861

WESTERN TESTING COMPANY INC.
SUBSURFACE PRESSURE SURVEY

DATE: 5/24/84
CUSTOMER: GUNNER OIL COMPANY
WELL: 1 TEST: 1
ELEVATION (KB): 0 FORMATION: INDIAN CAVE
SECTION: 1 TOWNSHIP: 30S
RANGE: 12W COUNTY: BARBER STATE: KANSAS
GAUGE SN #13552 RANGE: 4050 CLOCK: 12

TICKET #4385
LEASE: GIBSON
GEOLOGIST: GUINNESS

INTERVAL TEST FROM: 2738 FT TO: 2760 FT TOTAL DEPTH: 2760 FT
DEPTH OF SELECTIVE ZONE: FT
PACKER DEPTH: 2733 FT SIZE: 6 5/8 IN PACKER DEPTH: 2738 FT SIZE: 6 5/8 IN
PACKER DEPTH: FT SIZE: IN PACKER DEPTH: FT SIZE: IN

DRILLING CONTRACTOR: ALDERBARAN
MUD TYPE: PREMIX VISCOSITY: 32
WEIGHT: 9.2 WATER LOSS (CC):
CHLORIDES (P.P.M.): 35000
JARS - MAKE: SERIAL NUMBER:
DID WELL FLOW? NO REVERSED OUT? NO
DRILL COLLAR LENGTH: 562 FT I.D.: 2.25 IN
WEIGHT PIPE LENGTH: FT I.D.: IN
DRILL PIPE LENGTH: 2155 FT I.D.: 3.8 IN
TEST TOOL LENGTH: 21 FT TOOL SIZE: 5 1/2 O.D. IN
ANCHOR LENGTH: 22 FT SIZE: 5 1/2 O.D. IN
SURFACE CHOKE SIZE: 3/4 IN BOTTOM CHOKE SIZE: 3/4 IN
MAIN HOLE SIZE: 7 7/8 IN TOOL JOINT SIZE: 4 1/2 F.H. IN

BLOW: INITIAL FLOW PERIOD: WEAK INCREASED TO STRONG
BLOW. FINAL FLOW PERIOD: STRONG BLOW.

RECOVERED: 20	FT	OF: DRILLING MUD
RECOVERED:	FT	OF:
RECOVERED:	FT	OF:
RECOVERED:	FT	OF:
RECOVERED:	FT	OF:
RECOVERED:	FT	OF:
RECOVERED:	FT	OF:
RECOVERED:	FT	OF:

REMARKS: READ OUTSIDE CHART.

TIME SET PACKER(S): 6:30 A.M.	TIME STARTED OFF BOTTOM: 8:30 A.M.
WELL TEMPERATURE: 106 °F	
INITIAL HYDROSTATIC PRESSURE:	(A) 1368 PSI
INITIAL FLOW PERIOD MIN: 30	(B) 56 PSI TO (C) 57 PSI
INITIAL CLOSED IN PERIOD MIN: 30	(D) 183 PSI
FINAL FLOW PERIOD MIN: 30	(E) 63 PSI TO (F) 63 PSI
FINAL CLOSED IN PERIOD MIN: 27	(G) 176 PSI
FINAL HYDROSTATIC PRESSURE	(H) 1352 PSI

WESTERN TESTING COMPANY INC.
PRESSURE DATA

DATE: 5/24/84

CUSTOMER: GUNNER OIL COMPANY

TEST: 1

FORMATION: INDIAN CAVE

TOWNSHIP: 30S

COUNTY: BARBER

RANGE: 4050

TICKET #4385

LEASE: GIBSON

GEOLOGIST: GUINNESS

INDIAN CAVE

305

STATE: KANSAS

CLOCK: 12

(A) INITIAL HYDROSTATIC PRESSURE: 1368 PSI

(B) FIRST INITIAL FLOW PRESSURE: 56 PSI

(C) FIRST FINAL FLOW PRESSURE: 57 PSI

(D) INITIAL CLOSED-IN PRESSURE: 183 PSI

(E) SECOND INITIAL FLOW PRESSURE: 63 PSI

(F) SECOND FINAL FLOW PRESSURE: 63 PSI

(G) FINAL CLOSED-IN PRESSURE: 176 PSI

(H) FINAL HYDROSTATIC PRESSURE: 1352 PSI

WELL TEMPERATURE: 106 °F

OPEN TOOL: 6:30 A.M.

TIME - GIVEN TIME - ACTUAL

FIRST FLOW PRESSURE: 30 MIN 30 MIN

INITIAL CLOSED-IN PRESSURE: 30 MIN 30 MIN

SECOND FLOW PRESSURE: 30 MIN 30 MIN

FINAL CLOSED-IN PRESSURE: 30 MIN 27 MIN

PRESSURE BREAKDOWN

PT	FIRST FLOW		INITIAL SHUT-IN		SECOND FLOW		FINAL SHUT-IN	
	MIN	PRESSURE	MIN	PRESSURE	MIN	PRESSURE	MIN	PRESSURE
1	0	56	0	57	0	63	0	63
2	5	56	3	69	5	63	3	74
3	10	56	6	79	10	63	6	85
4	15	56	9	90	15	63	9	98
5	20	57	12	103	20	63	12	111
6	25	57	15	116	25	63	15	124
7	30	57	18	131	30	63	18	138
8			21	145			21	151
9			24	162			24	164
10			27	176			27	176
11			30	183				

**WESTERN TESTING CO., INC.**

P.O. BOX 1599 — WICHITA, KANSAS 67201

DATE 05/24/84

GUNNER OIL COMPANY
519 PARKE
PRATT, KANSAS 67124

WELL REPORT NO. 4386

UNIT NO.

DISTRICT 12

FOR CUSTOMER'S USE ONLY

REGISTER NO.

VOUCHER NO.

TERMS APPROVED

PRICE APPROVED

CALCULATIONS CHECKED

ADJUSTMENTS

ACCOUNTING DISTRIBUTION

AUDITED

FINAL APPROVAL

YOUR ORDER NO.

OWNER

CONTRACTOR

WELL NO.

FARM

SECTION

TWP.

RANGE

1 GIBSON

BARBER

KS

1

30S

12W

DRILL STEM TEST FROM 2738' TO 2770' TOTAL DEPTH 2770' (TEST 2) \$ 550.00

TOTAL \$ 550.00

DISCOUNT

1% DISCOUNT ALLOWED ON THIS INVOICE IF PAID
BY THE 20TH OF THE FOLLOWING MONTH.PLEASE INCLUDE OUR INVOICE NUMBER
WITH YOUR REMITTANCE

INVOICE NUMBER

\$ 5.50

4386

SEND ALL REMITTANCES TO POST OFFICE BOX 1599, WICHITA, KANSAS 67201



WESTERN TESTING CO., INC.
FORMATION TESTING

TICKET N^o 4386

P. O. BOX 1599 WICHITA, KANSAS 67201

Elevation _____ Formation Indian Cave Eff. Pay _____ Ft.

District Pratt

Date 5/24/84

Customer Order No. _____

COMPANY NAME Gunner Oil Co

ADDRESS 519 Parke Pratt 67124

LEASE AND WELL NO. Gibson #1 COUNTY Barber STATE KS Sec. 1 Twp. 30 Rge. 12W

Mail Invoice To Same #1 GIBSON Co. Name _____ Address _____ No. Copies Requested 5

Mail Charts To Same Address _____ No. Copies Requested 5

Formation Test No. 2 Interval Tested From 2738 ft. to 2770 ft. Total Depth 2770 ft.

Packer Depth 2733 ft. Size 6 5/8 in. Packer Depth 2738 ft. Size 6 5/8 in.

Depth of Selective Zone Set _____

Top Recorder Depth (Inside) 2759 ft. Recorder Number 13547 Cap. 4225

Bottom Recorder Depth (Outside) 2762 ft. *Recorder Number 13552 Cap. 4050

Below Saddle Recorder Depth _____ ft. Recorder Number _____ Cap. _____

Drilling Contractor Aldebaran Rig #4 Drill Collar Length 562 I. D. 2 1/4 in.

Mud Type Premix Viscosity 32 Weight Pipe Length _____ I. D. _____ in.

Weight 9.2 Water Loss N.C. Drill Pipe Length 21.55 I. D. 3.8 in.

Chlorides 35,000 P.P.M. Test Tool Length 21 ft. Tool Size 5 1/2 in.

Jars: Make _____ Serial Number No Anchor Length 32 ft. Size 5 1/2 in.

Did Well Flow? No Reversed Out No Surface Choke Size 3/4 in. Bottom Choke Size 3/4 in.

Main Hole Size 7 1/8 in. Tool Joint Size 4 1/2 FH in.

Blow: Strong blow throughout flow periods

Recovered 510 ft. of Gas Cut Mud

Recovered 60 ft. of Muddy Water

Recovered _____ ft. of _____

Recovered _____ ft. of _____

Recovered _____ ft. of _____

Chlorides _____ P.P.M. Sample Jars used _____ Remarks: _____

Read bottom chart

Time On Location 2:30 A.M. Time Pick Up Tool 3:00 P.M. Time Off Location 9:00 A.M.

Time Set Packer(s) 4:20 A.M. Time Started Off Bottom 6:20 P.M. Maximum Temperature 106°

Initial Hydrostatic Pressure _____ (A) 1368 P.S.I.

Initial Flow Period _____ Minutes 30 (B) 121 P.S.I. to (C) 304 P.S.I.

Initial Closed In Period _____ Minutes 30 (D) 670 P.S.I.

Final Flow Period _____ Minutes 30 (E) 345 P.S.I. to (F) 335 P.S.I.

Final Closed In Period _____ Minutes 30 (G) 639 P.S.I.

Final Hydrostatic Pressure _____ (H) 1348 P.S.I.

COMPANY TERMS

Western Testing Co., Inc. shall not be liable for damages of any kind to the property or personnel of the one for whom a test is made or for any loss suffered or sustained directly or indirectly through the use of its equipment, of its statements or opinion concerning the results of any test. Tools lost or damaged in the hole shall be paid at cost by the party for whom the test is made.

All charges subject to 12% interest after 60 days from date of invoice. Any expense incurred for collection will be added to the original amount.

Test Approved By Doug McInnes
Signature of Customer or his authorized representative

Western Representative Jim Wondrich 2376

FIELD INVOICE

Open Hole Test \$ 1550.00
Misrun \$ _____
Straddle Test \$ _____
Jars \$ _____
Selective Zone \$ _____
Safety Joint \$ _____
Standby \$ _____
Evaluation \$ _____
Extra Packer \$ _____
Circ. Sub. \$ _____
Mileage \$ _____
Fluid Sampler \$ _____
Extra Charts \$ _____
Insurance \$ _____
Telecopier \$ _____
TOTAL \$ 550.00

WESTERN TESTING CO., INC.

Pressure Data

Date 5-24

Test Ticket No. 4386

Recorder No. 13552

Capacity _____ Location _____ Ft

Clock No. _____ Elevation _____ Well Temperature _____ °F

Point	Pressure	
A Initial Hydrostatic Mud	<u>1402</u>	P.S.I.
B First Initial Flow Pressure	<u>121</u>	P.S.I.
C First Final Flow Pressure	<u>317</u>	P.S.I.
D Initial Closed-in Pressure	<u>685</u>	P.S.I.
E Second Initial Flow Pressure	<u>376</u>	P.S.I.
F Second Final Flow Pressure	<u>339</u>	P.S.I.
G Final Closed-in Pressure	<u>652</u>	P.S.I.
H Final Hydrostatic Mud	<u>1348</u>	P.S.I.

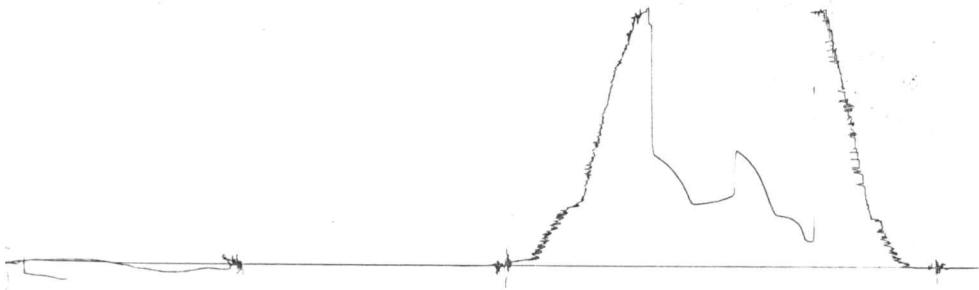
	Time Given	Time Computed
Open Tool		M
First Flow Pressure	<u>30</u> Mins.	<u>25</u> Mins.
Initial Closed-in Pressure	<u>30</u> Mins.	<u>30</u> Mins.
Second Flow Pressure	<u>30</u> Mins.	<u>30</u> Mins.
Final Closed-in Pressure	<u>30</u> Mins.	<u>30</u> Mins.

PRESSURE BREAKDOWN

First Flow Pressure		Initial Shut-In		Second Flow Pressure		Final Shut-In	
Breakdown: <u>6</u> Inc.		Breakdown: <u>11</u> Inc.		Breakdown: <u>7</u> Inc.		Breakdown: <u>11</u> Inc.	
of <u>5</u> mins. and a		of <u>3</u> mins. and a		of <u>5</u> mins. and a		of <u>3</u> mins. and a	
final inc. of <u>0</u> Min.		final inc. of <u>0</u> Min.		final inc. of <u>0</u> Min.		final inc. of <u>0</u> Min.	
Point Mins.	Press.	Point Minutes	Press.	Point Minutes	Press.	Point Minutes	Press.
P 1 0	<u>121</u>	0	<u>317</u>	0	<u>376</u>	0	<u>339</u>
P 2 5	<u>234</u>	3	<u>382</u>	5	<u>359</u>	3	<u>404</u>
P 3 10	<u>298</u>	6	<u>445</u>	10	<u>349</u>	6	<u>463</u>
P 4 15	<u>314</u>	9	<u>500</u>	15	<u>345</u>	9	<u>508</u>
P 5 20	<u>317</u>	12	<u>547</u>	20	<u>343</u>	12	<u>544</u>
P 6 25	<u>317</u>	15	<u>586</u>	25	<u>341</u>	15	<u>570</u>
P 7 30		18	<u>612</u>	30	<u>339</u>	18	<u>593</u>
P 8 35		21	<u>635</u>	35		21	<u>611</u>
P 9 40		24	<u>655</u>	40		24	<u>629</u>
P10 45		27	<u>673</u>	45		27	<u>643</u>
P11 50		30	<u>685</u>	50		30	<u>652</u>
P12 55		33		55		33	
P13 60		36		60		36	
P14		39		65		39	
P15		42		70		42	
P16		45		75		45	
P17		48		80		48	
P18		51		85		51	
P19		54		90		54	
P20		57				57	
		60				60	

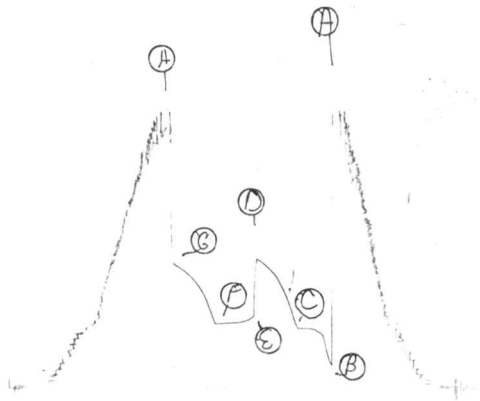
TKT # 4386

I



TK1^π 4.386

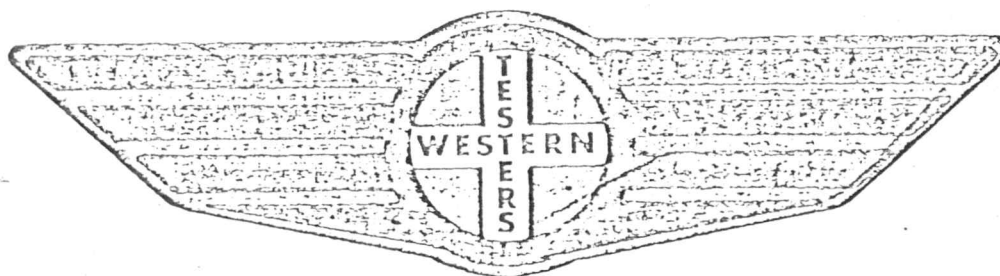
O



FORMATION

TEST

REPORT



Home Office:

Wichita, Kansas 67201

P.O. Box 1599

Phone (316) 262-5861

WESTERN TESTING COMPANY, INC.
SUBSURFACE PRESSURE SURVEY

DATE: 5/24/84
CUSTOMER: GUNNER OIL COMPANY
WELL: 1 TEST: 2
ELEVATION (KB): 0 FORMATION: INDIAN CAVE
SECTION: 1 TOWNSHIP: 30S
RANGE: 12W COUNTY: BARBER STATE: KANSAS
GAUGE SN #13552 RANGE: 4050 CLOCK: 12

INTERVAL TEST FROM: 2738 FT TO: 2770 FT TOTAL DEPTH: 2770 FT
DEPTH OF SELECTIVE ZONE: FT
PACKER DEPTH: 2733 FT SIZE: 6 5/8 IN PACKER DEPTH: 2738 FT SIZE: 6 5/8 IN
PACKER DEPTH: FT SIZE: IN PACKER DEPTH: FT SIZE: IN

DRILLING CONTRACTOR: ALDERBARAN
MUD TYPE: PREMIX VISCOSITY: 32
WEIGHT: 9.2 WATER LOSS (CC):
CHLORIDES (P.P.M.): 35000
JARS - MAKE: SERIAL NUMBER:
DID WELL FLOW? NO REVERSED OUT? NO
DRILL COLLAR LENGTH: 562 FT I.D.: 2.25 IN
WEIGHT PIPE LENGTH: FT I.D.: IN
DRILL PIPE LENGTH: 2155 FT I.D.: 3.8 IN
TEST TOOL LENGTH: 21 FT TOOL SIZE: 5 1/2 O.D. IN
ANCHOR LENGTH: 32 FT SIZE: 5 1/2 O.D. IN
SURFACE CHOKE SIZE: 3/4 IN BOTTOM CHOKE SIZE: 3/4 IN
MAIN HOLE SIZE: 7 7/8 IN TOOL JOINT SIZE: 4 1/2 F.H. IN

BLOW: STRONG BLOW THROUGHOUT TEST.

RECOVERED: 510	FT	OF: GAS CUT MUD
RECOVERED: 60	FT	OF: MUDDY WATER
RECOVERED:	FT	OF:
RECOVERED:	FT	OF:
RECOVERED:	FT	OF:
RECOVERED:	FT	OF:
RECOVERED:	FT	OF:
RECOVERED:	FT	OF:
RECOVERED:	FT	OF:

REMARKS: READ OUTSIDE CHART.

TIME SET PACKER(S): 4:20 P.M.	TIME STARTED OFF BOTTOM: 6:20 P.M.
WELL TEMPERATURE: 106 °F	
INITIAL HYDROSTATIC PRESSURE:	(A) 1402 PSI
INITIAL FLOW PERIOD MIN: 25	(B) 121 PSI TO (C) 317 PSI
INITIAL CLOSED IN PERIOD MIN: 30	(D) 685 PSI
FINAL FLOW PERIOD MIN: 30	(E) 376 PSI TO (F) 339 PSI
FINAL CLOSED IN PERIOD MIN: 30	(G) 652 PSI
FINAL HYDROSTATIC PRESSURE	(H) 1348 PSI

