

WELL LOG BUREAU KANSAS GEOLOGICAL SOCIETY
412 Union National Bk. Bldg., Wichita, Kansas

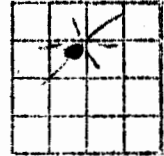
21-30-13W

Company - DRILLERS GAS CO.
Farm J. C. Lemon No. 1

SEC. 21 T. 30 R. 13 W
NE SE NW

Total Depth. 4447'
Comm. 1-14-46 Comp. 8-2-46
Shot or Treated. 4000 gals acid
Contractor. R. C. Patton Co.
Issued. 3-30-46

County. Barber
KANSAS



CASING:

10" 930' Cem.
7" 4440' Cem.

Elevation. 1786

Production. 8,080,000 cu.ft.gas

Figures Indicate Bottom of Formations.

surface 15
sand 30
shale red 245
red bed, shale
& shells 575
shale red 715
anhydrite 725
shale red 785
red bed 910
red bed, shale
& shells 1001
shale & shells 1210
shale 1540
salt, shale &
shells 1625
shale & shells 1775
anhydrite 1840
lime 1910
lime & shale 2015
lime 2160
lime & shale 2250
lime 2360
lime & shale 2730
shale 2815
lime & shale 2825
lime 2850
lime & shale 2880
shale 2950
lime & shale 2970
lime 3120
lime brkn 3280
lime & shale 3355
lime 3450
lime & shale 3550
lime sft 3575
lime hrd 3597
lime & shale 3610
lime & sand 3675
lime & shale 3790
shale 3820
lime & shale 4012

lime sdy 4045
lime 4155
lime & shale 4336
chert 4344
lime & shale 4355
shale 4428
sand 4435
sand & cherty
lime 4440
lime 4447
Total Depth.

Top of Maquoketa 4436