

Net Fr. Oil Sd. \_\_\_\_\_ Md. \_\_\_\_\_  
 Avg. Por. % \_\_\_\_\_ F. Md. \_\_\_\_\_  
 Oil Sat. % \_\_\_\_\_ Shot, Qts. \_\_\_\_\_  
 Water Sat. % \_\_\_\_\_

# OIL & WATER PRODUCTION

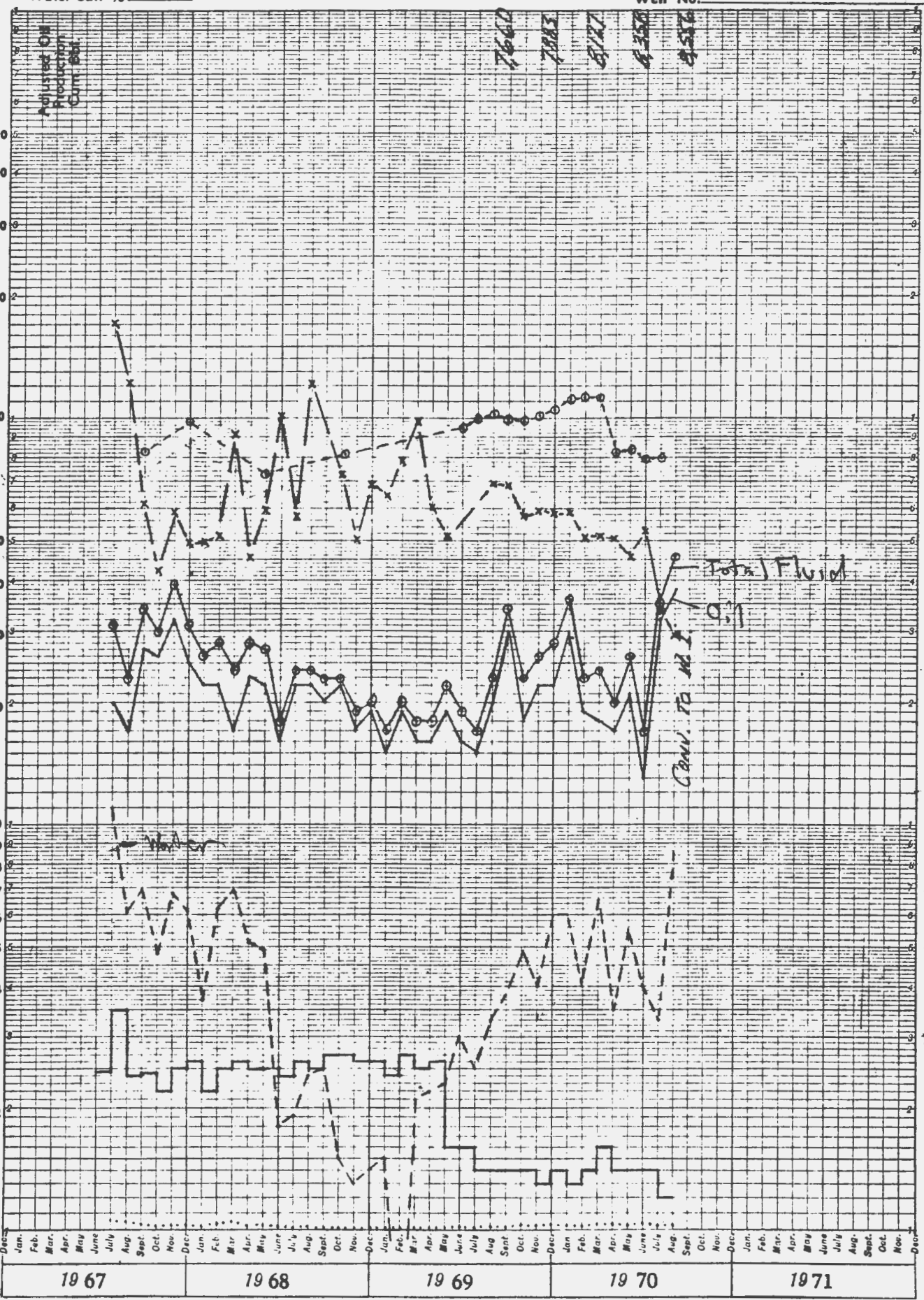
Company Beardmore Drilling Co.

Lease or Flood Bates Pool

Well No. Riner "A" No. 2

PRINTED IN U.S.A.

Bottom Hole Pressure  
 psi @ 2739 ft.



7660  
7883  
8127  
8350  
8576

Total Fluid  
 0.7  
 Conv. to M.I.

PRODUCING DAYS

Key: Oil \_\_\_\_\_ Water \_\_\_\_\_ Water/Oil Ratio \_\_\_\_\_ Total Fluid \_\_\_\_\_  
 BHP ○-○-○ GOR x-x-x-x

Earlougher Engineering

Bates Unit 5-W02

Page 1 of

C NENE 36-30S-2W Elev: 1314' KA

Date

Sumner County, Kansas

J. A. No.

Bates Pool

Prepared By

Kerri Snow



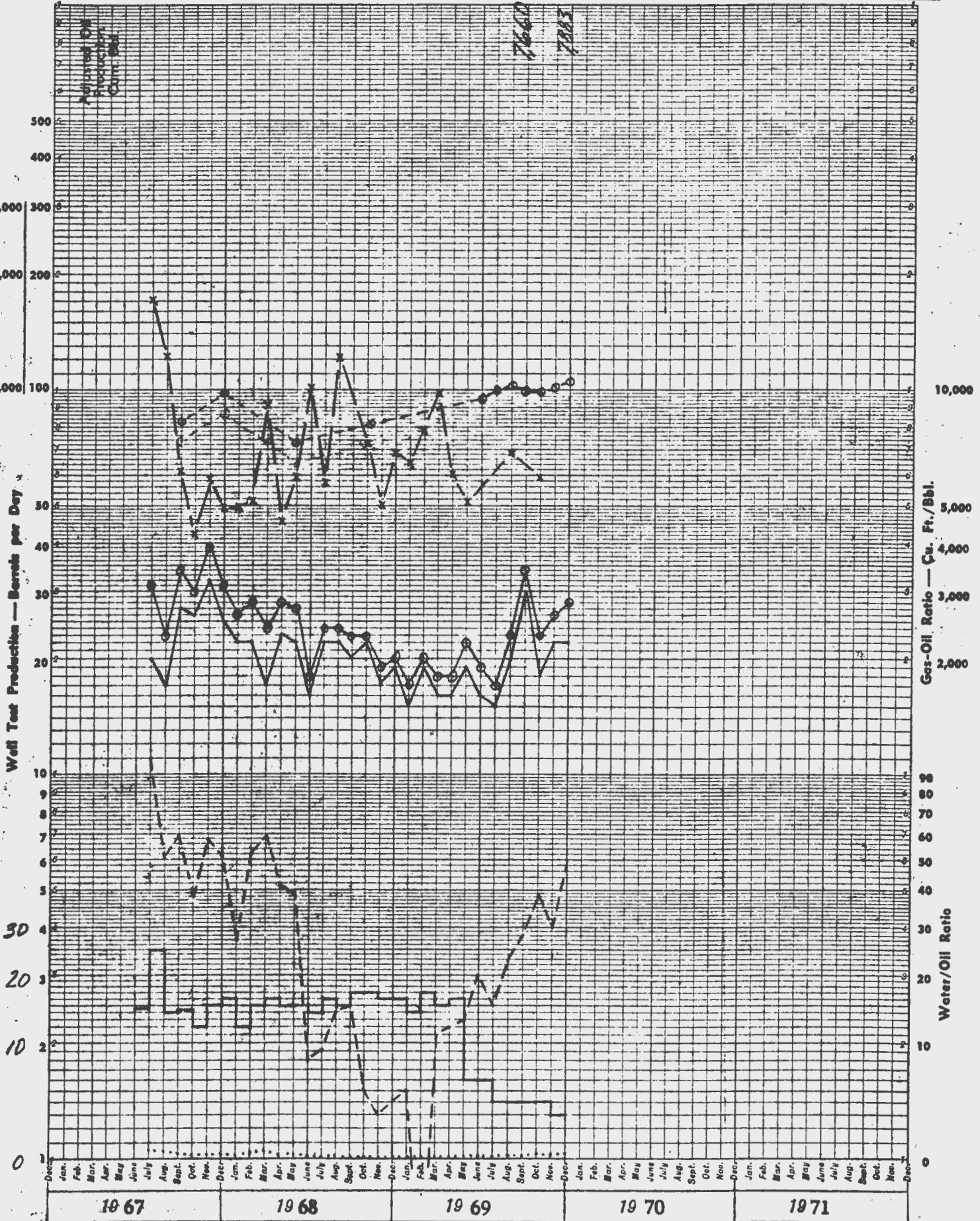
1	Hawes acids flushed w/90 BSW. Pumped 750 gals 15% FE acid. Taking all
2	water
3	
4	10-75; Pulled thg. Clean out well. Run 2 1/2" dual lined thg and
5	5 1/2 x 2 3/8 Baker plv. Mixed 100 gal sodium bicarbonate w/ 70 BFW
6	and pump down annulus. Circ sw down annulus, set thg. set
7	plv @ 3711. Then pumped 1000 gal FW w/ 4 gal acids, flush
8	w/ 15 bbl SW. Pumped 1000 gal 15% gal 15% FE acid. Taking
9	254 BWPA @ 130#.
10	
11	6-78; Hawes pumped 1000 gal FW w/ detergent flushed w/ 15 bbl
12	SW. Acidized w/ 1000 gal. Taking 440 bbl @ 275#
13	
14	8-79; Treated w/ 1000 gals FW w/ 4 gals Hawes acids. Let act two
15	days. Pumped 1000 gals 15% FE acid. Taking 414 BSW @
16	250#
17	
18	5-80; Treated w/ 1000 gals 15% FE acid, flushed w/ 15 BSW
19	Taking 454 BSW @ 420#
20	
21	7-81; Treated w/ 1000 gals FW w/ 5 gals Hawes acids flushed w/
22	5 BSW. Pumped 1000 gals 15% FE acid + flush w/ 15 BSW. Take
23	all produced water.
24	
25	10-81; Treated w/ 1000 gal FW w/ 5 gals Hawes acids followed
26	by 750 gals FE acid. Taking all prod water (495 BWPA).
27	
28	5-82 Treated w/ 1000 gal FW, displace w/ 15 BSW. Let act 1 1/2 hrs.
29	Pumped 1000 gals x 41 acid + displace w/ 15 BSW. Taking
30	520 BWPA @ 260#.
31	
32	
33	
34	
35	
36	

Net Ft. Oil Sd. \_\_\_\_\_ P Md. \_\_\_\_\_  
 Avg. Por. % \_\_\_\_\_ Ft. x Md. \_\_\_\_\_  
 Oil Sat. % \_\_\_\_\_ Shot, Qts. \_\_\_\_\_  
 Water Sat. % \_\_\_\_\_

# OIL & WATER PRODUCTION

Company Beardmore Drilling Co.  
 Lease or Flood Bates Pool  
 Well No. Riner "A" No. 2

Bottom Hole Pressure  
psi @ 3750 ft.



Key: Oil \_\_\_\_\_ Water \_\_\_\_\_ Water/Oil Ratio \_\_\_\_\_ Total Fluid \_\_\_\_\_  
 BHP \_\_\_\_\_ GOR \_\_\_\_\_  
 Erlouger Engineering

	<u>LEASE OPERATOR</u>	<u>LEASE NAME</u>	<u>LEASE DESCRIPTION</u>	<u>WELL ID# &amp; Spot location</u>
9.	Phillips Pet. Co.	Bates Unit	E/2 Sec. 36-30S-2W	#3-4 C NW SE Sec. 36-30S-2W
10.	"	"	& W/2 Sec. 31-30S-1W	#4-1 E/2 SE SE Sec. 36-30S-2W
11.	"	"	"	#4-2 N/2 NE SE Sec. 36-30S-2W
12.	"	"	"	#5-1 S/2 SE NE Sec. 36-30S-2W
13.	"	"	"	#5-3 C SW NE Sec. 36-30S-2W
14.	"	"	"	#5-4 NW NW NE Sec. 36-30S-2W
15.	Aladdin Petroleum	Ast	E/2 NW/4	#1 NE SE NW Sec. 36-30S-2W
16.	"	"	Sec. 36-30S-2W	#2 SW NE NW Sec. 36-30S-2W
17.	"	"	"	#3 50' S of NE NE NW Sec. 36-30S-2W
18.	"	"	"	#4 SW SE NW Sec. 36-30S-2W

	<u>PRODUCING FORMATION</u>	<u>STRATA</u>	<u>DEPTH</u>	<u>TOTAL DISSOLVED SOLIDS</u>
9.	Mississippi	3726	to Not Penetrated	216,330
10.	"	3736	to "	237,168
11.	"	3732	to "	216,009
12.	"	3723	to "	217,294
13.	"	3718	to "	225,077
14.	"	3727	to "	204,270
15.	"	3746	to "	Not known
16.	"	3732	to "	"
17.	"	3723	to "	"
18.	"	3764	to "	"

STATE CORPORATION COMMISSION  
CONSERVATION DIVISION  
200 Colorado Derby Bldg  
Wichita, Kansas 67202

CO 7

OPERATOR Phillips Petroleum Co. Lease Bates Unit

Township 30 S Range 1W&2W County Sumner Pool Bates

