

DIAMOND TESTING

P.O. Box 157

HOISINGTON, KANSAS 67544

(620) 653-7550 • (800) 542-7313

STC 21099.D89

KCC

MAR 21 2005

CONFIDENTIAL

Page 1 of 8 Pages

Company Ritchie Exploration, Inc. Lease & Well No. Lang 30C No. 1
 Elevation 2586 KB Formation Langdon Sand Effective Pay 9 Ft. Ticket No. J1581
 Date 12-16-04 Sec. 30 Twp. 30S Range 25W County Clark State Kansas
 Test Approved By Jeff Christian Diamond Representative Roger D. Friedly

Formation Test No. 2 Interval Tested from 3,590 ft. to 3,620 ft. Total Depth 3,620 ft.
 Packer Depth 3,585 ft. Size 6 3/4 in. Packer Depth -- ft. Size -- in.
 Packer Depth 3,590 ft. Size 6 3/4 in. Packer Depth -- ft. Size -- in.
 Depth of Selective Zone Set ft.

Top Recorder Depth (Inside) 3,593 ft. Recorder Number 21099 Cap. 5,000 psi
 Bottom Recorder Depth (Outside) 3,617 ft. Recorder Number 11073 Cap. 3,900 psi
 Below Straddle Recorder Depth ft. Recorder Number Cap. psi

Drilling Contractor VAL Energy, Inc. - Rig 2 Drill Collar Length 60 ft. I.D. 2 1/4 in.
 Mud Type Chemical Viscosity 54 Weight Pipe Length -- ft. I.D. -- in.
 Weight 8.7 Water Loss 10.0 cc. Drill Pipe Length 3,510 ft. I.D. 3 1/2 in.
 Chlorides 6,000 P.P.M. Test Tool Length 20 ft. Tool Size 3 1/2 - IF in.
 Jars: Make Bowen Serial Number Not Run Anchor Length 30 ft. Size 4 1/2 - FH in.
 Did Well Flow? No Reversed Out No Surface Choke Size 1 in. Bottom Choke Size 5/8 in.
 Main Hole Size 7 7/8 in. Tool Joint Size 4 1/2 - XH in.

Blow: 1st Open: Strong blow. Off bottom of bucket immediately. Gas to surface in 2 mins. No blow back during shut-in.
2nd Open: Strong blow. Off bottom of bucket immediately. Gas to surface throughout. Weak blow back during shut-in.

Recovered 170 ft. of gassy water = 2.398400 bbls. (Grind out: 20%-gas; 80%-water) Chlorides: 86,000 Ppm
 (SEE GAS VOLUME REPORT)
 Recovered ft. of
 Recovered ft. of
 Recovered ft. of
 Recovered ft. of
 Remarks

Time Set Packer(s) 3:58 ~~XXX~~ P.M. Time Started Off Bottom 8:28 ~~XXX~~ P.M. Maximum Temperature 93°
 Initial Hydrostatic Pressure (A) 1687 P.S.I.
 Initial Flow Period Minutes 30 (B) 409 P.S.I. to (C) 583 P.S.I.
 Initial Closed In Period Minutes 60 (D) 1088 P.S.I.
 Final Flow Period Minutes 60 (E) 463 P.S.I. to (F) 609 P.S.I.
 Final Closed In Period Minutes 120 (G) 1076 P.S.I.
 Final Hydrostatic Pressure (H) 1644 P.S.I.



DIAMOND TESTING
P. O. Box 157
HOISINGTON, KANSAS 67544
(800) 542-7313

FLUID SAMPLE DATA

Company Ritchie Exploration, Inc.
Lease & Well No. Lang 30C No. 1
Date 12-16-04 Sec. 30 Twp. 30 S Range 25 W
Formation Test No. 2 Interval Tested From 3,590 ft. to 3,620 ft. Total Depth 3,620 ft.
Formation Langdon Sand

	<u>MUD PIT</u>	<u>RECOVERY</u>
Viscosity	<u>54</u> CP	<u>--</u> CP
Weight	<u>8.7</u>	<u>--</u>
Water Loss	<u>10.0</u> CC	<u>--</u> CC
PH Factor	<u>10.5</u>	<u>7.0</u>

	<u>RESISTIVITY</u>	<u>CHLORIDE CONTENT</u>
Recovery Water	<u>.11 @ 60 °F.</u>	<u>90,000</u> ppm
Recovery Mud	<u>-- @ -- °F.</u>	<u>--</u> ppm
Recovery Mud Filtrate	<u>-- @ -- °F.</u>	<u>--</u> ppm
Mud Pit Sample	<u>1.40 @ 55 °F.</u>	<u>6,300</u> ppm
Mud Pit Sample Filtrate	<u>1.40 @ 57 °F.</u>	<u>6,100</u> ppm

Sample Taken By ROGER D. FRIEDLY

Witness By Jeff Christian

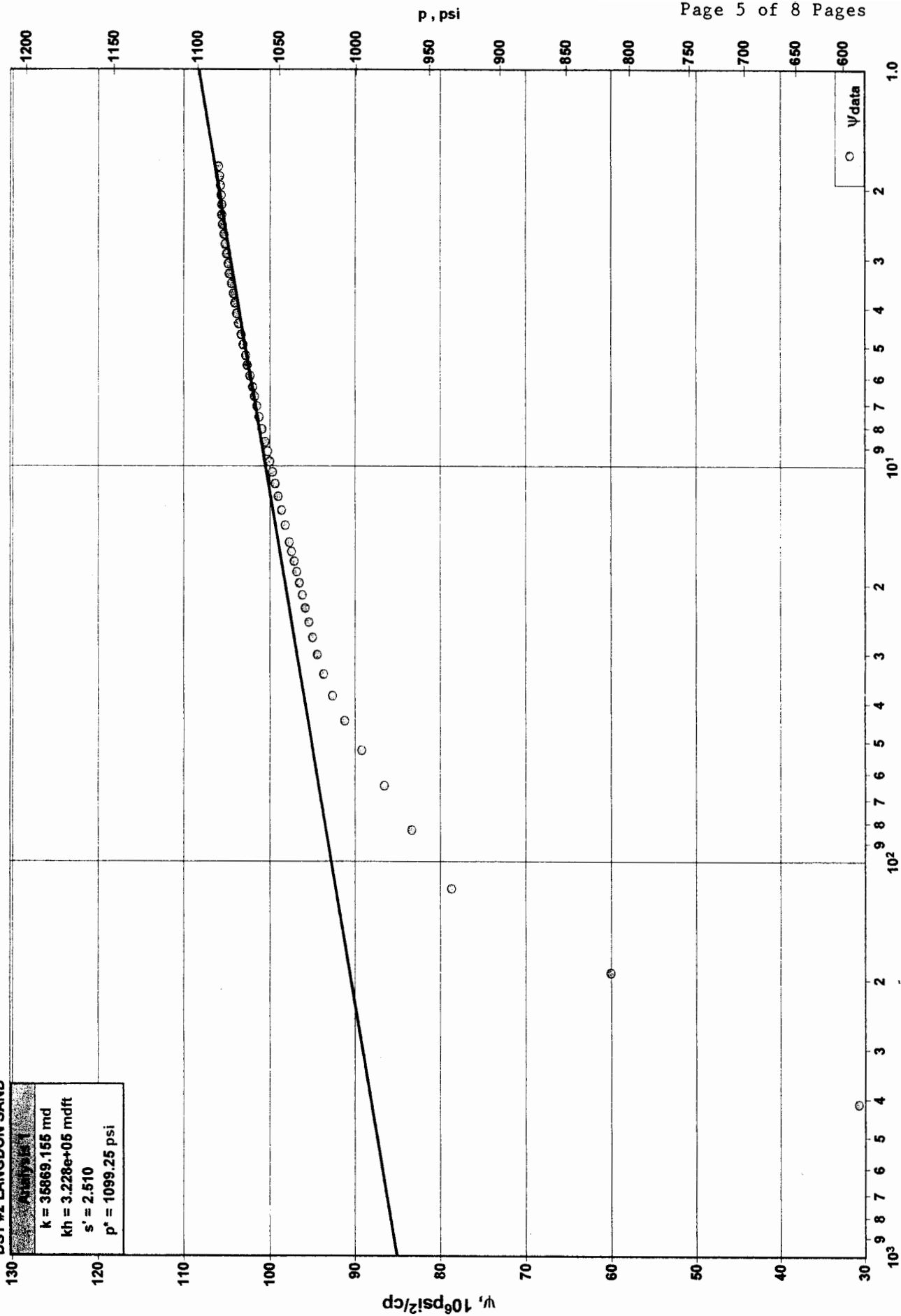
Remarks Pit filtrate triton dish chlorides were 6,000 Ppm
Recovery water dish chlorides were 86,000 Ppm

Diagnostic Analysis 1

DST #2 INITIAL SHUT-IN

RITCHIE EXPLORATION, INC
 LANG 30C #1
 DST #2 LANGDON SAND

Analysis 1
 k = 36869.155 mmd
 kh = 3.228e+05 mdft
 s' = 2.510
 p* = 1099.25 psi



Superposition Radial Pseudo-Time ($\Sigma\Delta t_{Ra}$), hr

Gas Well Test - Buildup

Radial Flow Analysis

RITCHIE EXPLORATION, INC
LANG 30C #1

DST #2 LANGDON SAND

Analysis Results

Total Sandface Rate ($q_t B_t$)	3593636.883 bb/d	Apparent Skin (s')	2.510
Semilog Slope (m)	1.32	Skin - Damage	2.510
Gas Permeability (k_g)	35869.155 md	Skin - Inclination	
Oil Permeability (k_o)	md	Skin - Partial Penetration	
Water Permeability (k_w)	md	Pressure Drop Due to Skin (Δp_s)	142.40 psi
Flow Capacity (kh)	322822.399 md.ft	Damage Ratio (DR)	1.079
Total Mobility ($k/\mu_{L,t}$)	2355392.94 md/cp	Flow Efficiency (FE)	0.927
Total Transmissivity ($kh/\mu_{L,t}$)	21198536.46 md.ft/cp		

Reservoir Parameters

Net Pay (h)	9.000 ft
Total Porosity (ϕ_t)	20.00 %
Water Saturation (S_w)	20.00 %
Oil Saturation (S_o)	0.00 %
Gas Saturation (S_g)	80.00 %
Wellbore Radius (r_w)	0.30 ft
Formation Temperature (T)	120.0 °F
Formation Compressibility (c_f)	3.647e-6 psi ⁻¹
Total Compressibility (c_t)	5.159e-4 psi ⁻¹

Pressures

Initial Pressure (p_i)	1735.82 psi
Extrapolated Pressure (p^*)	1099.25 psi
Final Flowing Pressure (p_{wfo})	605.37 psi

Production and Times

Corrected Flow Time (t_c)	0.5056 hr
Cumulative Gas Production	165.899 MMCF
Final Gas Rate	2830.010 MMCF/D

Fluid Properties

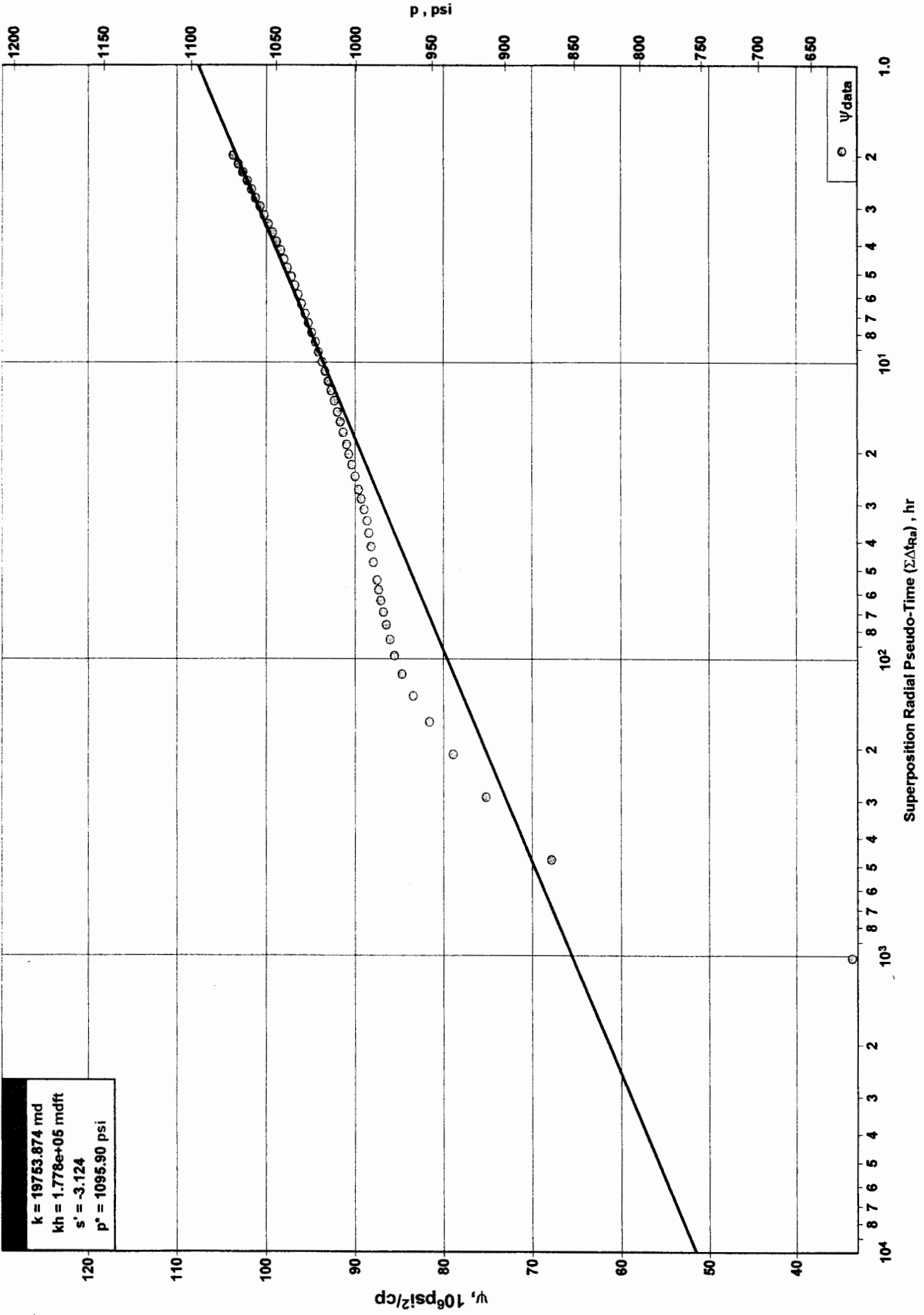
Gas Gravity (G)	0.650
N ₂	0.00 %
CO ₂	0.00 %
H ₂ S	0.00 %
Critical Pressure (P_c)	670.91 psi
Critical Temperature (T_c)	373.97 R
PVT Reference Pressure (p_{pVT})	1735.82 psi
Gas Compressibility (c_g)	6.39549e-4 psi ⁻¹
Gas Compressibility Factor (z)	0.815
Gas Viscosity ($\mu_{L,g}$)	0.0152 cp
Gas Formation Volume Factor (B_g)	0.001366 bbl/scf

Diagnostic Analysis 2

DST #2 FINAL SHUT-IN

RITCHIE EXPLORATION, INC
 LANG 30C #1
 DST #2 LANGDON SAND

$k = 19753.874$ md
 $kh = 1.778e+05$ mdft
 $s' = -3.124$
 $p^* = 1095.90$ psi



Gas Well Test - Buildup

Radial Flow Analysis

RITCHIE EXPLORATION, INC
LANG 30C #1

DST #2 LANGDON SAND

Analysis Results

Total Sandface Rate (q_{tBt})	3593636.883 bbl/d	Apparent Skin (s')	-3.124
Semilog Slope (m)	2.41	Skin - Damage	-3.124
Gas Permeability (k_G)	19753.874 md	Skin - Inclination	
Oil Permeability (k_O)	md	Skin - Partial Penetration	
Water Permeability (k_W)	md	Pressure Drop Due to Skin (Δp_s)	-33205.37 psi
Flow Capacity (kh)	177784.865 md.ft	Damage Ratio (DR)	0.856
Total Mobility (k/μ_{t})	1297162.83 md/cp	Flow Efficiency (FE)	1.168
Total Transmissivity(kh/μ_{t})	11674465.44 md.ft/cp		

Reservoir Parameters

Net Pay (h)	9.000 ft
Total Porosity (Φ_t)	20.00 %
Water Saturation (S_W)	20.00 %
Oil Saturation (S_O)	0.00 %
Gas Saturation (S_G)	80.00 %
Wellbore Radius (r_w)	0.30 ft
Formation Temperature (T)	120.0 °F
Formation Compressibility (c_f)	3.647e-6 psi ⁻¹
Total Compressibility (c_t)	5.159e-4 psi ⁻¹

Pressures

Initial Pressure (p_i)	1735.82 psi
Extrapolated Pressure (p^*)	1095.90 psi
Final Flowing Pressure (p_{wfo})	605.37 psi

Production and Times

Corrected Flow Time (t_c)	1.5111 hr
Cumulative Gas Production	165.899 MMCF
Final Gas Rate	2630.010 MMCF/D

Fluid Properties

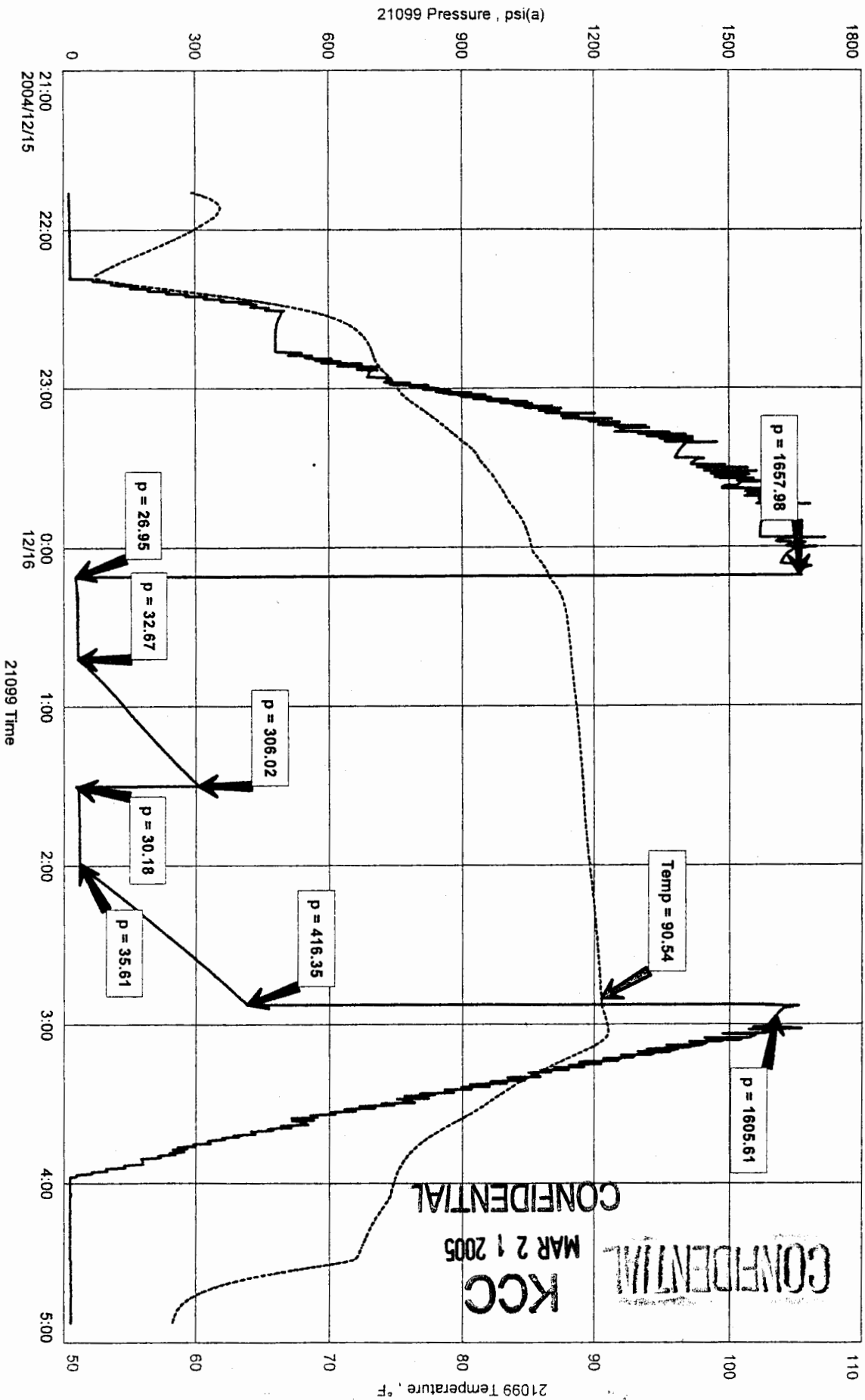
Gas Gravity (G)	0.650
N ₂	0.00 %
CO ₂	0.00 %
H ₂ S	0.00 %
Critical Pressure (P_c)	670.91 psi
Critical Temperature (T_c)	373.97 R
PVT Reference Pressure (pp_{VT})	1735.82 psi
Gas Compressibility (c_g)	6.39549e-4 psi ⁻¹
Gas Compressibility Factor (z)	0.815
Gas Viscosity ($\mu_{t,g}$)	0.0152 cp
Gas Formation Volume Factor (B_g)	0.001366 bbl/scf

RITCHEE EXPLORATION INC
DST 1 3518-3535
Start Test Date: 2004/12/15
Final Test Date: 2004/12/16

30-30S-25W

LANG 30C #1

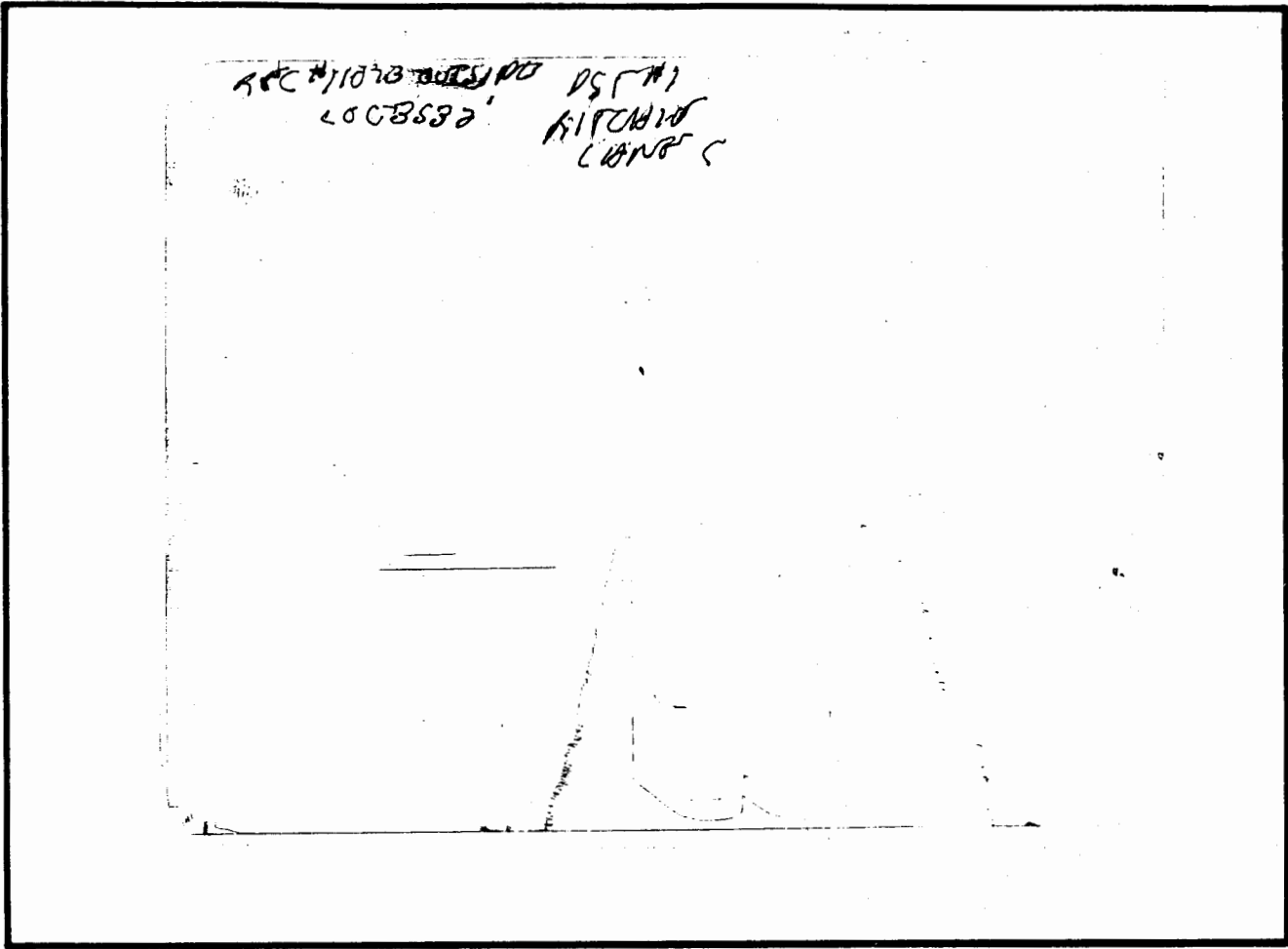
LANG 30C #1
Formation: TARKIO
Job Number: D88



CONFIDENTIAL

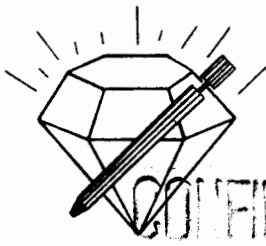
MAR 2 1 2005
KCC

CONFIDENTIAL



This is an actual photograph of recorder chart.

POINT	PRESSURE		Elec. Office Reading	PSI
	Field Reading			
(A) Initial Hydrostatic Mud	1658	1658		PSI
(B) First Initial Flow Pressure.....	27	27		PSI
(C) First Final Flow Pressure	33	33		PSI
(D) Initial Closed-in Pressure	306	306		PSI
(E) Second Initial Flow Pressure	30	30		PSI
(F) Second Final Flow Pressure.....	36	36		PSI
(G) Final Closed-in Pressure.....	416	416		PSI
(H) Final Hydrostatic Mud	1606	1606		PSI



DIAMOND TESTING

P.O. Box 157
HOISINGTON, KANSAS 67544

(620) 653-7550 • (800) 542-7313
STC 21099.D88

KCC
MAR 21 2005
CONFIDENTIAL

Page 1 of 3 Pages

Company Ritchie Exploration, Inc. Lease & Well No. Lang 30C No. 1

Elevation 2586 KB Formation Tarkio Effective Pay -- Ft. Ticket No. J1580

Date 12-15-04 Sec. 30 Twp. 30S Range 25W County Clark State Kansas

Test Approved By Jeff Christian Diamond Representative Roger D. Friedly

Formation Test No. 1 Interval Tested from 3,518 ft. to 3,535 ft. Total Depth 3,535 ft.

Packer Depth 3,513 ft. Size 6 3/4 in. Packer Depth -- ft. Size -- in.

Packer Depth 3,518 ft. Size 6 3/4 in. Packer Depth -- ft. Size -- in.

Depth of Selective Zone Set ft.

Top Recorder Depth (Inside) 3,521 ft. Recorder Number 21099 Cap. 5,000 psi

Bottom Recorder Depth (Outside) 3,532 ft. Recorder Number 11073 Cap. 3,900 psi

Below Straddle Recorder Depth ft. Recorder Number Cap. psi

Drilling Contractor VAL Energy, Inc. - Rig 2 Drill Collar Length 60 ft. I.D. 2 1/4 in.

Mud Type Chemical Viscosity 50 Weight Pipe Length -- ft. I.D. -- in.

Weight 8.8 Water Loss 10.0 cc. Drill Pipe Length 3,438 ft. I.D. 3 1/2 in.

Chlorides 3,000 P.P.M. Test Tool Length 20 ft. Tool Size 3 1/2 - IF in.

Jars: Make Bowen Serial Number Not Run Anchor Length 17 ft. Size 4 1/2 - FH in.

Did Well Flow? No Reversed Out No Surface Choke Size 1 in. Bottom Choke Size 5/8 in.

Main Hole Size 7 7/8 in. Tool Joint Size 4 1/2 - XH in.

Blow: 1st Open: Strong blow. Off bottom of bucket in 5 mins. No blow back during shut-in.

2nd Open: Strong, 10 in., blow decreasing to 4 ins. at end. No blow back during shut-in.

Recovered 90 ft. of gas in pipe

Recovered 30 ft. of slightly gas cut mud = .147600 bbls. (Grind out: 10%-gas; 90%-mud)

Recovered 30 ft. of TOTAL FLUID = .147600 bbls.

Recovered ft. of

Recovered ft. of

Remarks

Time Set Packer(s) 12:10 ~~P.M.~~ ^{A.M.} Time Started Off Bottom 2:40 ~~P.M.~~ ^{A.M.} Maximum Temperature 91°

Initial Hydrostatic Pressure (A) 1658 P.S.I.

Initial Flow Period Minutes 30 (B) 27 P.S.I. to (C) 33 P.S.I.

Initial Closed In Period Minutes 45 (D) 306 P.S.I.

Final Flow Period Minutes 30 (E) 30 P.S.I. to (F) 36 P.S.I.

Final Closed In Period Minutes 45 (G) 416 P.S.I.

Final Hydrostatic Pressure (H) 1606 P.S.I.



DIAMOND TESTING
 P. O. Box 157
 HOISINGTON, KANSAS 67544
 (800) 542-7313

Page 2 of 3 Pages

FLUID SAMPLE DATA

Company Ritchie Exploration, Inc.

Lease & Well No. Lang 30C No. 1

Date 12-15-04 Sec. 30 Twp. 30 S Range 25W

Formation Test No. 1 Interval Tested From 3,518 ft. to 3,535 ft. Total Depth 3,535 ft.

Formation Tarkio

	<u>MUD PIT</u>	<u>RECOVERY</u>
Viscosity	<u>50</u> CP	<u>56</u> CP
Weight	<u>8.8</u>	<u>9.0</u>
Water Loss	<u>10.0</u> CC	<u>9.0</u> CC
PH Factor	<u>10.5</u>	<u>10.0</u>

	<u>RESISTIVITY</u>	<u>CHLORIDE CONTENT</u>
Recovery Water	<u>-- @ -- °F.</u>	<u>-- ppm</u>
Recovery Mud	<u>2.00 @ 65 °F.</u>	<u>3,400 ppm</u>
Recovery Mud Filtrate	<u>2.20 @ 63 °F.</u>	<u>3,200 ppm</u>
Mud Pit Sample	<u>2.40 @ 54 °F.</u>	<u>3,200 ppm</u>
Mud Pit Sample Filtrate	<u>2.60 @ 56 °F.</u>	<u>3,000 ppm</u>

Sample Taken By ROGER D. FRIEDLY

Witness By Jeff Christian

Remarks Pit filtrate triton dish chlorides were 3,000 Ppm
Recovery filtrate triton dish chlorides were 3,000 Ppm

GENERAL INFORMATION

Client Information:

Company: RITCHIE EXPLORATION INC

Contact: CRAIG CAULK

Phone: Fax: e-mail:

Site Information:

Contact: JEFF CHRISTIAN

Phone: Fax: e-mail:

Well Information:

Name: LANG 30C #1

Operator: RITCHIE EXPLORATION INC

Location-Downhole: DST 1 3518-3535

Location-Surface: S30/30S/25W CLARK COUNTY

Test Information:

Company: DIAMOND TESTING

Representative: JOHN RIEDL

Supervisor: JEFF CHRISTIAN

Test Type: CONVENTIONAL

Job Number: D88

Test Unit: 2

Start Date: 2004/12/15

Start Time: 21:45:00

End Date: 2004/12/16

End Time: 04:51:30

Report Date: 2004/12/16

Prepared By: JOHN RIEDL

Remarks:

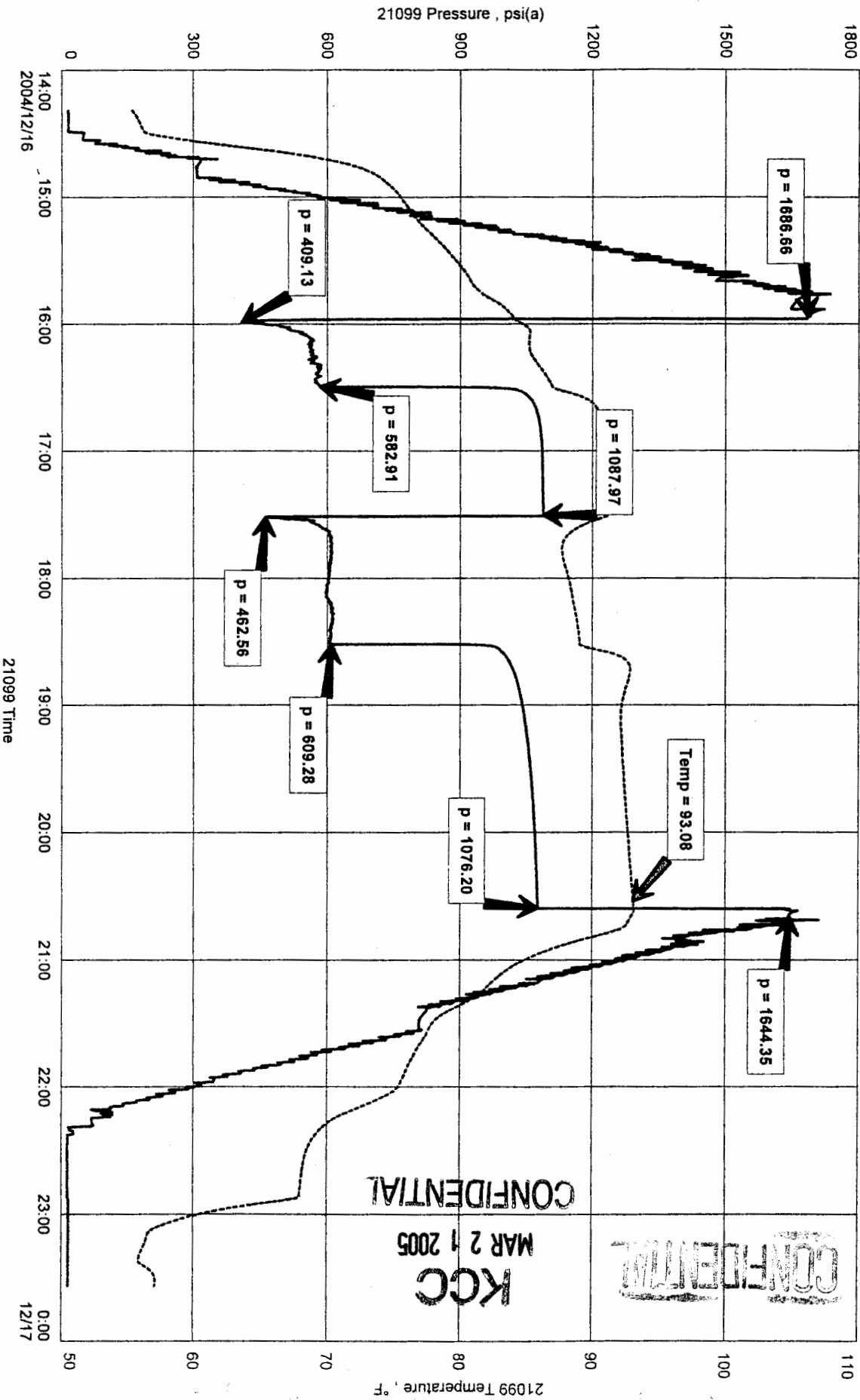
Qualified By: JEFF CHRISTIAN

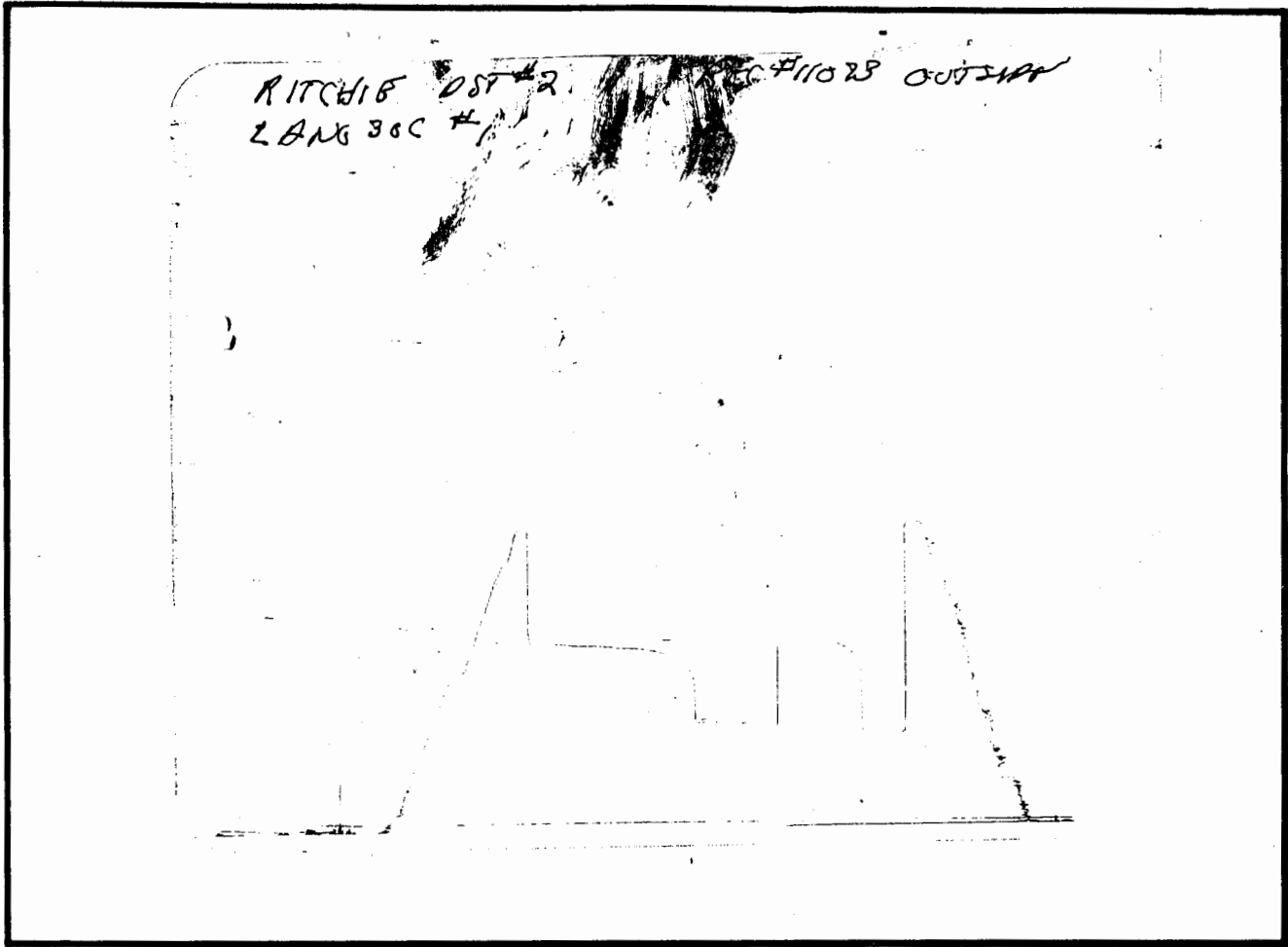
RECOVERY: 90'GIP 30'SLGCM

RITCHIE EXPLORATION INC
 DST 2 3590-3620
 Start Test Date: 2004/12/16
 Final Test Date: 2004/12/16

LANG 30C #1

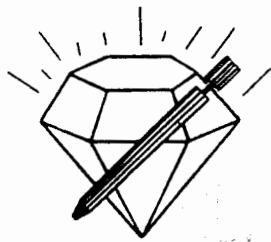
LANG 30C #1
 Formation: LANGDON SAND
 Job Number: D89
 30-305-250





This is an actual photograph of recorder chart.

POINT	PRESSURE		Elec. Office Reading	PSI
	Field Reading			
(A) Initial Hydrostatic Mud	1687	1687		PSI
(B) First Initial Flow Pressure.....	409	409		PSI
(C) First Final Flow Pressure	583	583		PSI
(D) Initial Closed-in Pressure	1088	1088		PSI
(E) Second Initial Flow Pressure	463	463		PSI
(F) Second Final Flow Pressure.....	609	609		PSI
(G) Final Closed-in Pressure.....	1076	1076		PSI
(H) Final Hydrostatic Mud.....	1644	1644		PSI



DIAMOND TESTING
 P.O. Box 157
 HOISINGTON, KANSAS 67544
 (620) 653-7550 • (800) 542-7313
 STC 21099.D90

KCC
MAR 21 2005
CONFIDENTIAL

Page 1 of 8 Pages

Company Ritchie Exploration, Inc. Lease & Well No. Lang 30C No. 1

Elevation 2586 KB Formation Lansing "B" Effective Pay -- Ft. Ticket No. J1582

Date 12-19-04 Sec. 30 Twp. 30S Range 25W County Clark State Kansas

Test Approved By Jeff Christian Diamond Representative Roger D. Friedly

Formation Test No. 3 Interval Tested from 4,539 ft. to 4,555 ft. Total Depth 4,555 ft.

Packer Depth 4,534 ft. Size 6 3/4 in. Packer Depth -- ft. Size -- in.

Packer Depth 4,539 ft. Size 6 3/4 in. Packer Depth -- ft. Size -- in.

Depth of Selective Zone Set ft.

Top Recorder Depth (Inside) 4,542 ft. Recorder Number 21099 Cap. 5,000 psi

Bottom Recorder Depth (Outside) 4,552 ft. Recorder Number 11073 Cap. 3,900 psi

Below Straddle Recorder Depth ft. Recorder Number Cap. psi

Drilling Contractor VAL Energy, Inc. - Rig 2 Drill Collar Length 60 ft. I.D. 2 1/4 in.

Mud Type Chemical Viscosity 49 Weight Pipe Length -- ft. I.D. -- in.

Weight 9.0 Water Loss 9.0 cc. Drill Pipe Length 4,459 ft. I.D. 3 1/2 in.

Chlorides 7,000 P.P.M. Test Tool Length 20 ft. Tool Size 3 1/2 - IF in.

Jars: Make Bowen Serial Number Not Run Anchor Length 16 ft. Size 4 1/2 - FH in.

Did Well Flow? No Reversed Out No Surface Choke Size 1 in. Bottom Choke Size 5/8 in.

Main Hole Size 7 7/8 in. Tool Joint Size 4 1/2 - XH in.

Blow: 1st Open: Strong blow. Off bottom of bucket immediately. Gas to surface in 2 mins. No blow back during shut-in.
2nd Open: Strong blow. Gas to surface throughout. No blow back during shut-in. (SEE GAS VOLUME REPORT.)

Recovered 60 ft. of gas condensate = .295200 bbls.

Recovered 40 ft. of water & gas condensate = .568000 bbls. (Chlorides: 60,000 Ppm)

Recovered 100 ft. of TOTAL FLUID = .863200 bbls.

Recovered ft. of

Recovered ft. of

Remarks

Time Set Packer(s) 10:05 ~~P.M.~~ ^{A.M.} Time Started Off Bottom 2:35 ~~P.M.~~ ^{XXM.} Maximum Temperature 103°

Initial Hydrostatic Pressure (A) 2218 P.S.I.

Initial Flow Period Minutes 30 (B) 648 P.S.I. to (C) 629 P.S.I.

Initial Closed In Period Minutes 60 (D) 1461 P.S.I.

Final Flow Period Minutes 60 (E) 683 P.S.I. to (F) 626 P.S.I.

Final Closed In Period Minutes 120 (G) 1465 P.S.I.

Final Hydrostatic Pressure (H) 2168 P.S.I.



DIAMOND TESTING
 P. O. Box 157
 HOISINGTON, KANSAS 67544
 (800) 542-7313

FLUID SAMPLE DATA

Company Ritchie Exploration, Inc.

Lease & Well No. Lang 30C No. 1

Date 12-19-04 Sec. 30 Twp. 30 S Range 25 W

Formation Test No. 3 Interval Tested From 4,539 ft. to 4,555 ft. Total Depth 4,555 ft.

Formation Lansing "B"

	<u>MUD PIT</u>	<u>RECOVERY</u>
Viscosity	<u>49</u> CP	<u>--</u> CP
Weight	<u>9.0</u>	<u>--</u>
Water Loss	<u>9.0</u> CC	<u>--</u> CC
PH Factor	<u>10.0</u>	<u>8.5</u>

	<u>RESISTIVITY</u>	<u>CHLORIDE CONTENT</u>
Recovery Water	<u>1.50 @ 60 °F.</u>	<u>58,000</u> ppm
Recovery Mud	<u>-- @ -- °F.</u>	<u>--</u> ppm
Recovery Mud Filtrate	<u>-- @ -- °F.</u>	<u>--</u> ppm
Mud Pit Sample	<u>1.10 @ 55 °F.</u>	<u>6,800</u> ppm
Mud Pit Sample Filtrate	<u>1.00 @ 57 °F.</u>	<u>7,000</u> ppm

Sample Taken By ROGER D. FRIEDLY

Witness By Jeff Christian

Remarks Pit filtrate triton dish chlorides were 7,000 Ppm
Recovery water dish chlorides were 60,000 Ppm



DIAMOND TESTING
P. O. Box 157
HOISINGTON, KANSAS 67544
(316) 653-7550
GAS VOLUME REPORT

Company Ritchie Exploration, Inc. Lease & Well No. Lang 30C No. 1
Date 12-19-04 Sec. 30 Twp. 30S Rge. 25 W Location 900' FSL & 1,700' FWL, SEC County Clark State KS
Drilling Contractor VAL Energy, Inc. - Rig 2 Formation Lansing "B" DST No. 3
Remarks: 1st Open: Gas to surface in 2 mins. Gas sample taken. Gas burned an orange flame.
2nd Open: Received water mist to surface in 20 mins. during final flow.

INITIAL FLOW

Open Tool: 10:05 a.m.

Time O'Clock	Orifice Size	Gauge	MCF/D
10:15 a.m.	1½ in.	76 psi	3,280
10:25 a.m.	1½ in.	79 psi	3,388
10:35 a.m.	1½ in.	79 psi	3,388

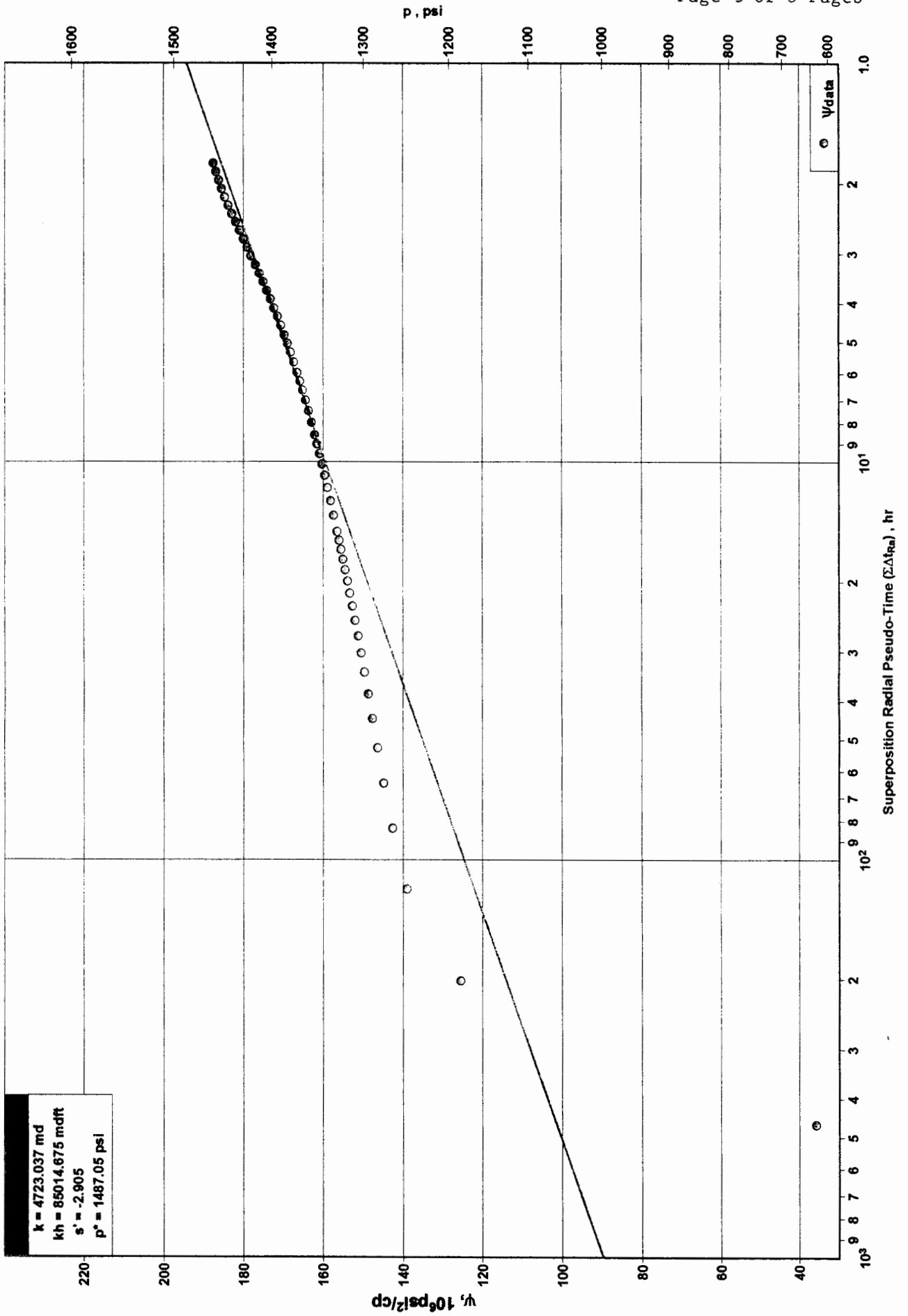
FINAL FLOW

Open Tool: 11:35 a.m.

Time O'Clock	Orifice Size	Gauge	MCF/D
11:45 a.m.	1½ in.	81 psi	3,460
11:55 a.m.	1½ in.	78 psi	3,352
12:05 p.m.	1½ in.	70 psi	3,063
12:15 p.m.	1½ in.	77 psi	3,316
12:25 p.m.	1½ in.	74 psi	3,207
12:35 p.m.	1½ in.	72 psi	3,135

Diagnostic Analysis 1

LANG 30C DST #3 INITIAL SHUT-IN



Gas Well Test - Buildup

Radial Flow Analysis

RITCHIE EXPLORATION, INC.

DST #3 LKC 'B'

LANG 30C #1

Analysis Results

Total Sandface Rate (q_{tBt})	3206293.144 bbl/d	Apparent Skin (s')	-2.905
Semilog Slope (m)	5.98	Skin - Damage	-2.905
Gas Permeability (k_g)	4723.037 md	Skin - Inclination	
Oil Permeability (k_o)	md	Skin - Partial Penetration	
Water Permeability (k_w)	md	Pressure Drop Due to Skin (Δp_s)	-33228.46 psi
Flow Capacity (kh)	85014.675 md.ft	Damage Ratio (DR)	0.816
Total Mobility (k_{ft})	274260.81 md/cp	Flow Efficiency (FE)	1.225
Total Transmissivity (kh_{ft})	4936694.59 md.ft/cp		

Reservoir Parameters

Net Pay (h)	18.000ft
Total Porosity (ϕ_t)	20.00%
Water Saturation (S_w)	20.00%
Oil Saturation (S_o)	0.00%
Gas Saturation (S_g)	80.00%
Wellbore Radius (r_w)	0.30ft
Formation Temperature (T)	120.0°F
Formation Compressibility (c_f)	3.647e-6psi ⁻¹
Total Compressibility (c_t)	3.607e-4psi ⁻¹

Pressures

Initial Pressure (p_i)	2274.58psi
Extrapolated Pressure (p^*)	1487.05psi
Final Flowing Pressure (p_{wfo})	626.33psi

Production and Times

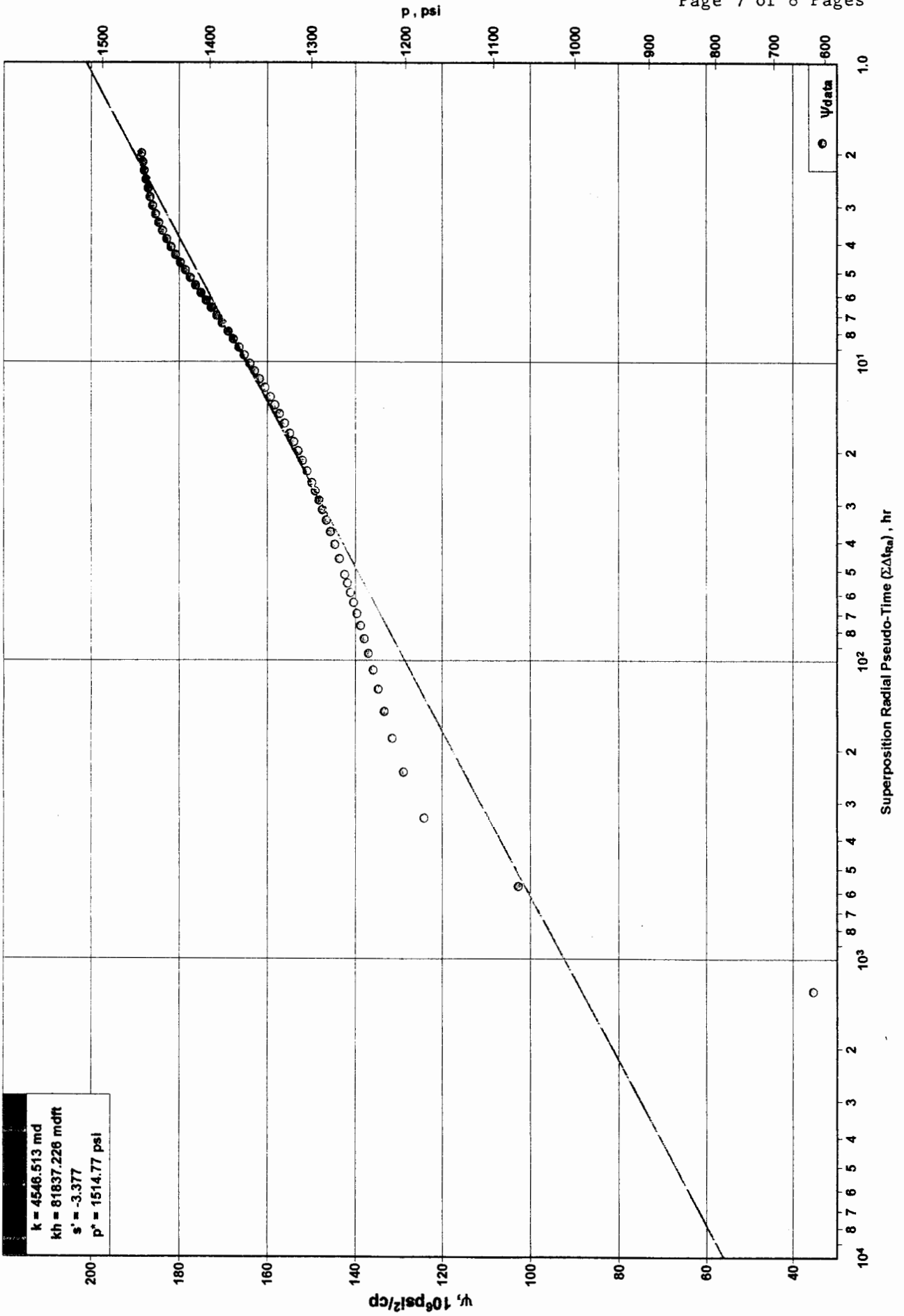
Corrected Flow Time (t_c)	0.4805hr
Cumulative Gas Production	197.914MMCF
Final Gas Rate	3135.012MMCF/D

Fluid Properties

Gas Gravity (G)	0.650
N ₂	0.00%
CO ₂	0.00%
H ₂ S	0.00%
Critical Pressure (P_c)	670.91 psi
Critical Temperature (T_c)	373.97 R
PVT Reference Pressure (p_{pVT})	2274.58 psi
Gas Compressibility (c_g)	4.45595e-4psi ⁻¹
Gas Compressibility Factor (z)	0.799
Gas Viscosity (μ_{lg})	0.0172 cp
Gas Formation Volume Factor (B_g)	0.001023 bbl/scf

Diagnostic Analysis 2

LANG 30 C DST #3 FINAL SHUT-IN



$k = 4548.513$ md
 $kh = 81837.226$ mdft
 $s' = -3.377$
 $p^* = 1514.77$ psi

Gas Well Test - Buildup

Radial Flow Analysis

RITCHIE EXPLORATION, INC.

DST #3 LKC 'B'

LANG 30C #1

Analysis Results

Total Sandface Rate (q_{tB1})	3206293.144 bbl/d	Apparent Skin (s')	-3.377
Semilog Slope (m)	6.23	Skin - Damage	-3.377
Gas Permeability (k_G)	4546.513 md	Skin - Inclination	
Oil Permeability (k_O)	md	Skin - Partial Penetration	
Water Permeability (k_W)	md	Pressure Drop Due to Skin (Δp_S)	-33226.33 psi
Flow Capacity (kh)	81837.226 md.ft	Damage Ratio (DR)	0.786
Total Mobility (k/μ_{t1})	264010.23 md/cp	Flow Efficiency (FE)	1.273
Total Transmissivity (kh/μ_{t1})	4752184.19 md.ft/cp		

Reservoir Parameters

Net Pay (h)	18.000 ft
Total Porosity (ϕ_{t1})	20.00%
Water Saturation (S_W)	20.00%
Oil Saturation (S_O)	0.00%
Gas Saturation (S_G)	80.00%
Wellbore Radius (r_w)	0.30 ft
Formation Temperature (T)	120.0°F
Formation Compressibility (c_f)	3.647e-6 psi ⁻¹
Total Compressibility (c_t)	3.607e-4 psi ⁻¹

Pressures

Initial Pressure (p_i)	2274.58 psi
Extrapolated Pressure (p^*)	1514.77 psi
Final Flowing Pressure (p_{wfO})	626.33 psi

Production and Times

Corrected Flow Time (t_c)	1.5123 hr
Cumulative Gas Production	197.914 MMCF
Final Gas Rate	3135.012 MMCF/D

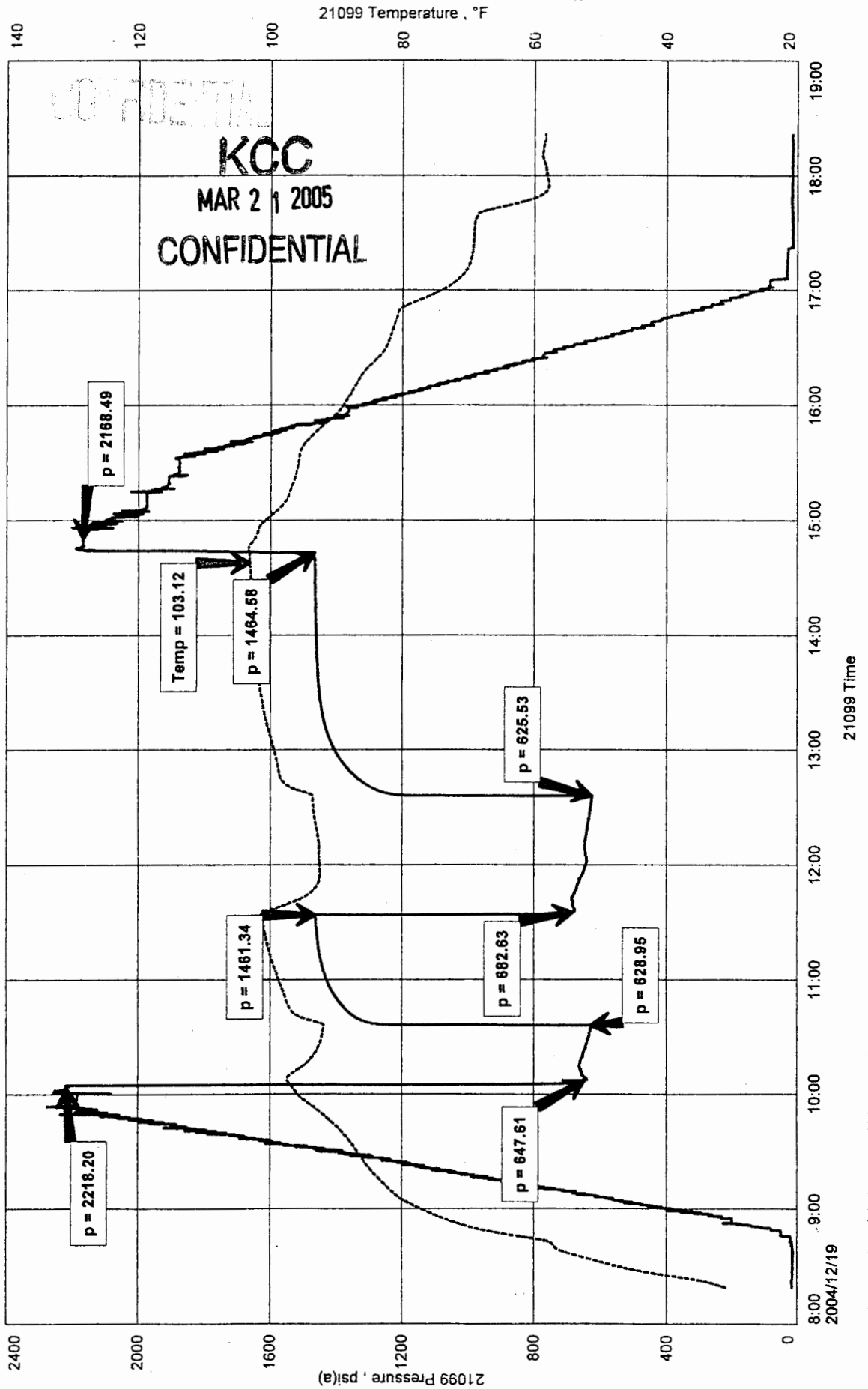
Fluid Properties

Gas Gravity (G)	0.650
N ₂	0.00%
CO ₂	0.00%
H ₂ S	0.00%
Critical Pressure (P_c)	670.91 psi
Critical Temperature (T_c)	373.97 R
PVT Reference Pressure (pp_{VT})	2274.58 psi
Gas Compressibility (c_g)	4.45595e-4 psi ⁻¹
Gas Compressibility Factor (z)	0.799
Gas Viscosity (μ_{t1g})	0.0172 cp
Gas Formation Volume Factor (B_g)	0.001023 bbl/scf

RITCHIE EXPLORATION INC
S30/30S/25W
Start Test Date: 2004/12/19
Final Test Date: 2004/12/19

LANG 30C #1

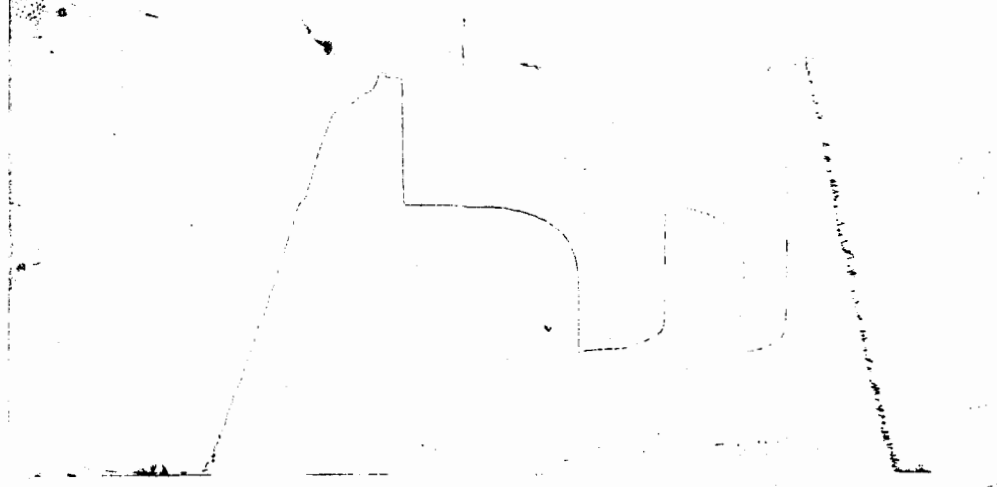
LANG 30C #1
Formation: LANSING "B"
Job Number: D90
0573



LOG 4552

DST #3
RITCHIO

ROC# 11022005
CANG-300



This is an actual photograph of recorder chart.

POINT	PRESSURE		Elec. Office Reading	PSI
	Field Reading			
(A) Initial Hydrostatic Mud	2218	2218		PSI
(B) First Initial Flow Pressure	648	648		PSI
(C) First Final Flow Pressure	629	629		PSI
(D) Initial Closed-in Pressure	1461	1461		PSI
(E) Second Initial Flow Pressure	683	683		PSI
(F) Second Final Flow Pressure	626	626		PSI
(G) Final Closed-in Pressure	1465	1465		PSI
(H) Final Hydrostatic Mud	2168	2168		PSI



DIAMOND TESTING

P.O. Box 157
HOISINGTON, KANSAS 67544
(620) 653-7550 • (800) 542-7313
STC 21099.D91

KCC
MAR 21 2005

Page 1 of 4 Pages
CONFIDENTIAL

Company Ritchie Exploration, Inc. Lease & Well No. Lang 30C No. 1
Elevation 2586 KB Formation Lansing "H" Effective Pay -- Ft. Ticket No. J1583
Date 12-20-04 Sec. 30 Twp. 30S Range 25W County Clark State Kansas
Test Approved By Jeff Christian Diamond Representative John C. Riedl

Formation Test No. 4 Interval Tested from 4,734 ft. to 4,777 ft. Total Depth 4,777 ft.
Packer Depth 4,729 ft. Size 6 3/4 in. Packer Depth -- ft. Size -- in.
Packer Depth 4,734 ft. Size 6 3/4 in. Packer Depth -- ft. Size -- in.
Depth of Selective Zone Set -- ft.

Top Recorder Depth (Inside) 4,737 ft. Recorder Number 21099 Cap. 5,000 psi
Bottom Recorder Depth (Outside) 4,774 ft. Recorder Number 11073 Cap. 3,900 psi
Below Straddle Recorder Depth -- ft. Recorder Number -- Cap. -- psi

Drilling Contractor VAL Energy, Inc. - Rig 2 Drill Collar Length 60 ft. I.D. 2 1/4 in.
Mud Type Chemical Viscosity 55 Weight Pipe Length -- ft. I.D. -- in.
Weight 9.1 Water Loss 10.0 cc. Drill Pipe Length 4,654 ft. I.D. 3 1/2 in.
Chlorides 5,000 P.P.M. Test Tool Length 20 ft. Tool Size 3 1/2 - JF in.
Jars: Make Bowen Serial Number Not Run Anchor Length 43 ft. Size 4 1/2 - FH in.
Did Well Flow? No Reversed Out Yes Surface Choke Size 1 in. Bottom Choke Size 5/8 in.
Main Hole Size 7 7/8 in. Tool Joint Size 4 1/2 - XH in.

Blow: 1st Open: Strong blow. Off bottom of bucket in 1 min. Decreasing to 8 ins. by end. Strong blow back during shut-in.
2nd Open: Strong blow. Off bottom of bucket in 1 min. Gas to surface in 15 mins. Strong blow back during shut-in.
(SEE GAS VOLUME REPORT)

Recovered 1,800 ft. of gassy salt water = 25.003020 bbls. (Chlorides: 74,000 Ppm)
Recovered -- ft. of --
Recovered -- ft. of --
Recovered -- ft. of --
Recovered -- ft. of --

Remarks

Time Set Packer(s) 2:15 P.M. Time Started Off Bottom 5:15 P.M. Maximum Temperature 117°
Initial Hydrostatic Pressure (A) 2240 P.S.I.
Initial Flow Period Minutes 30 (B) 208 P.S.I. to (C) 596 P.S.I.
Initial Closed In Period Minutes 45 (D) 1487 P.S.I.
Final Flow Period Minutes 45 (E) 639 P.S.I. to (F) 1021 P.S.I.
Final Closed In Period Minutes 60 (G) 1492 P.S.I.
Final Hydrostatic Pressure (H) 2229 P.S.I.



DIAMOND TESTING
P.O. Box 157
HOISINGTON, KANSAS 67544
(620) 653-7550 • (800) 542-7313

Page 2 of 4 Pages

FLUID SAMPLE DATA

Company Ritchie Exploration, Inc.

Lease & Well No. Lang 30C No. 1

Date 12-20-04 Sec. 30 Twp. 30 S Range 25 W

Formation Test No. 4 Interval Tested From 4,734 ft. to 4,777 ft. Total Depth 4,777 ft.

Formation Lansing "H"

	<u>MUD PIT</u>	<u>RECOVERY</u>
Viscosity	<u>55</u> CP	<u>--</u> CP
Weight	<u>9.1</u>	<u>--</u>
Water Loss	<u>10.0</u> CC	<u>--</u> CC
PH Factor	<u>10.0</u>	<u>7.0</u>

	<u>RESISTIVITY</u>	<u>CHLORIDE CONTENT</u>
Recovery Water	<u>.13 @ 60 °F.</u>	<u>75,000</u> ppm
Recovery Mud	<u>-- @ -- °F.</u>	<u>--</u> ppm
Recovery Mud Filtrate	<u>-- @ -- °F.</u>	<u>--</u> ppm
Mud Pit Sample	<u>1.10 @ 65 °F.</u>	<u>5,900</u> ppm
Mud Pit Sample Filtrate	<u>1.10 @ 67 °F.</u>	<u>5,700</u> ppm

Sample Taken By JOHN C. RIEDL

Witness By Jeff Christian

Remarks Pit filtrate triton dish chlorides were 5,000 Ppm
Recovery water dish chlorides were 74,000 Ppm

GENERAL INFORMATION

Client Information:

Company: RITCHIE EXPLORATION INC

Contact: CRAIG CAULK

Phone: Fax: e-mail:

Site Information:

Contact: JEFF CHRISTIAN

Phone: Fax: e-mail:

Well Information:

Name: LANG 30C #1

Operator: RITCHIE EXPLORATION INC

Location-Downhole: DST# 4 4734-4777

Location-Surface: S30/30S/25W CLARK COUNTY

Test Information:

Company: DIAMOND TESTING

Representative: JOHN RIEDL

Supervisor: JEFF CHRISTIAN

Test Type: CONVENTIONAL Job Number: D91

Test Unit: 2

Start Date: 2004/12/20 Start Time: 12:31:00

End Date: 2004/12/20 End Time: 21:25:10

Report Date: 2004/12/20 Prepared By: JOHN RIEDL

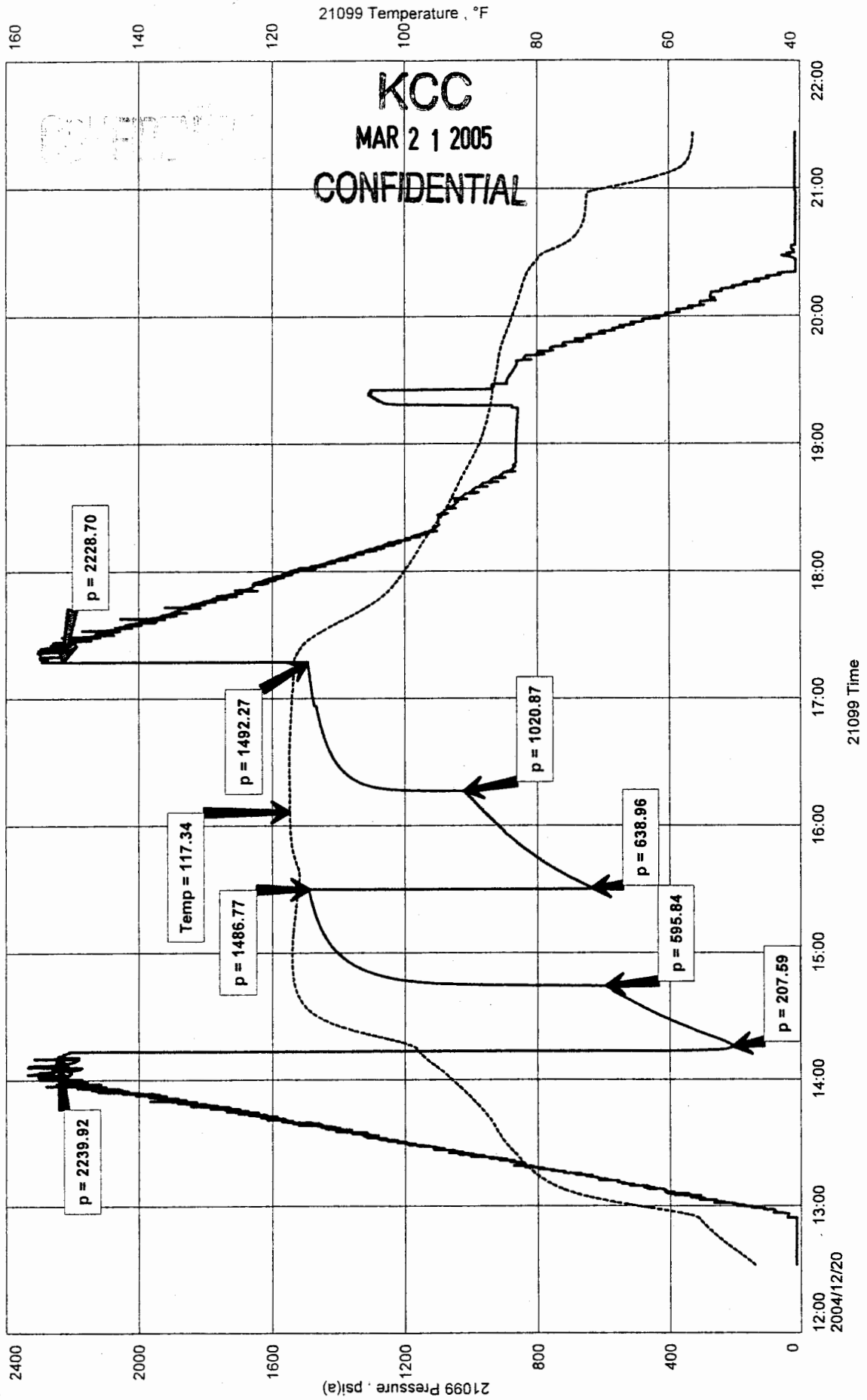
Remarks: Qualified By: JEFF CHRISTIAN

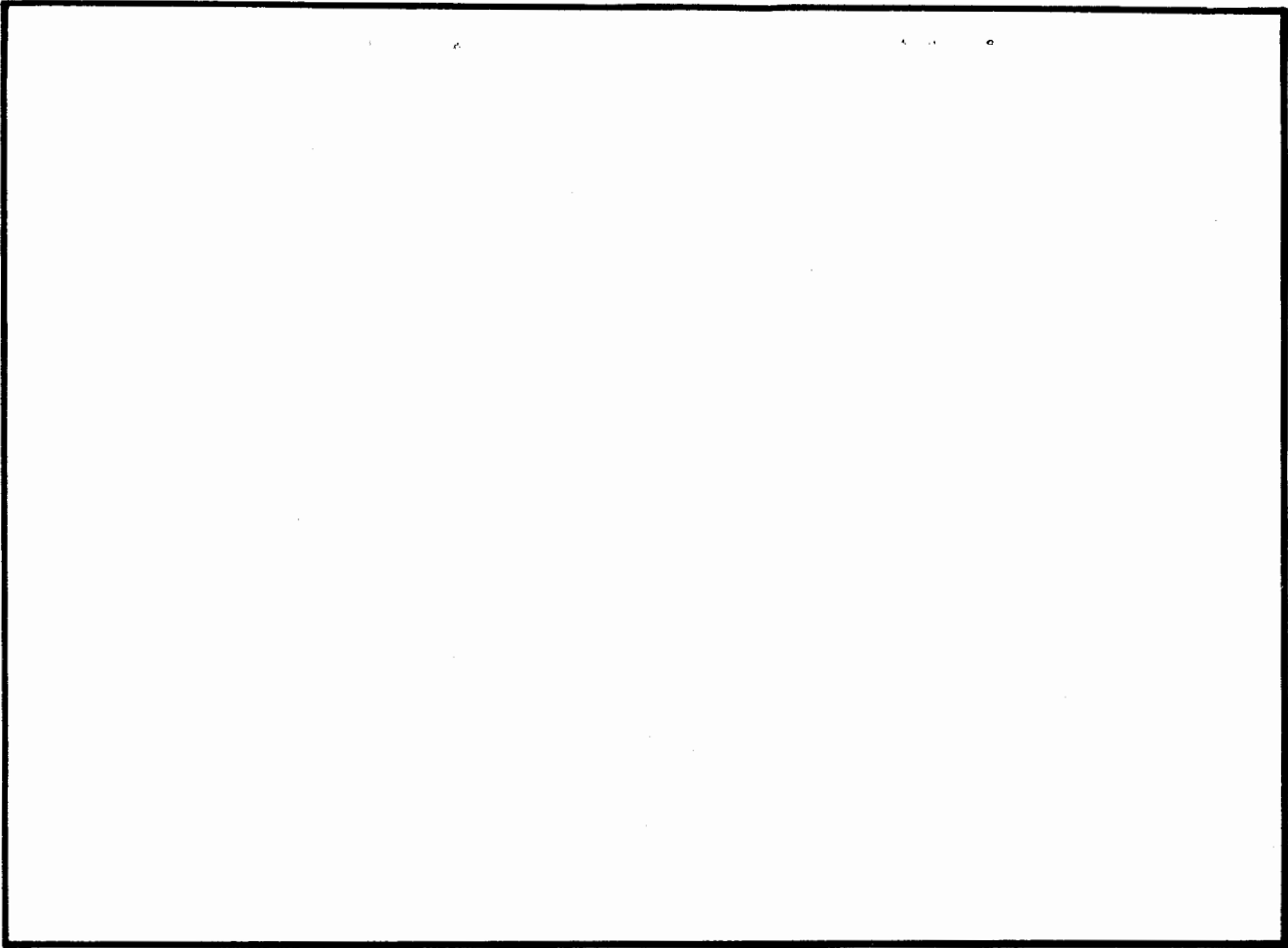
GAS TO SURFACE 15 MINUTES 2ND FLOW [SEE GASS VOLUME REPORT]
RECOVERY: 1800' GASSY SALTWATER [CHLORIDES 74,000 Ppm]

RITCHIE EXPLORATION INC
DST# 4 4734-4777
Start Test Date: 2004/12/20
Final Test Date: 2004/12/20

LANG 30C #1
Formation: LANSING "H"
Job Number: D91
30-30s-25w

LANG 30C #1





This is an actual photograph of recorder chart.

POINT	PRESSURE		PSI
	Field Reading	Elec. Office Reading	
(A) Initial Hydrostatic Mud	2240	2240	PSI
(B) First Initial Flow Pressure.....	208	208	PSI
(C) First Final Flow Pressure	596	596	PSI
(D) Initial Closed-in Pressure	1487	1487	PSI
(E) Second Initial Flow Pressure	639	639	PSI
(F) Second Final Flow Pressure.....	1021	1021	PSI
(G) Final Closed-in Pressure	1492	1492	PSI
(H) Final Hydrostatic Mud	2229	2229	PSI



DIAMOND TESTING

P.O. Box 157

HOISINGTON, KANSAS 67544

(620) 653-7550 • (800) 542-7313

STC 21099.D92

KCC

MAR 2 1 2005

CONFIDENTIAL of 3 Pages

Company Ritchie Exploration, Inc. Lease & Well No. Lang 30C No. 1

Elevation 2586 KB Formation Marmaton Effective Pay -- Ft. Ticket No. J1584

Date 12-22-04 Sec. 30 Twp. 30S Range 25W County Clark State Kansas

Test Approved By Jeff Christian Diamond Representative John C. Riedl

Formation Test No. 5 Interval Tested from 5,079 ft. to 5,089 ft. Total Depth 5,089 ft.

Packer Depth 5,074 ft. Size 6 3/4 in. Packer Depth -- ft. Size -- in.

Packer Depth 5,079 ft. Size 6 3/4 in. Packer Depth -- ft. Size -- in.

Depth of Selective Zone Set -- ft.

Top Recorder Depth (Inside) 5,068 ft. Recorder Number 21099 Cap. 5,000 psi

Bottom Recorder Depth (Outside) 5,086 ft. Recorder Number 11073 Cap. 3,900 psi

Below Straddle Recorder Depth -- ft. Recorder Number -- Cap. -- psi

Drilling Contractor VAL Energy, Inc. - Rig 2 Drill Collar Length 60 ft. I.D. 2 1/4 in.

Mud Type Chemical Viscosity 54 Weight Pipe Length -- ft. I.D. -- in.

Weight 9.1 Water Loss 9.0 cc. Drill Pipe Length 4,995 ft. I.D. 3 1/2 in.

Chlorides 6,000 P.P.M. Test Tool Length 24 ft. Tool Size 3 1/2 - IF in.

Jars: Make Bowen Serial Number Not Used Anchor Length 10 ft. Size 4 1/2 - FH in.

Did Well Flow? No Reversed Out No Surface Choke Size 1 in. Bottom Choke Size 5/8 in.

Main Hole Size 7 7/8 in. Tool Joint Size 4 1/2 - XH in.

Blow: 1st Open: Strong blow. Off bottom of bucket in 1 1/2 mins. No blow back during shut-in.

2nd Open: Strong blow. Off bottom of bucket immediately. Weak blow back during shut-in.

Recovered 1,900 ft. of gas in pipe

Recovered 40 ft. of gassy muddy oil = .568000 bbls. (Grind out: 15%-gas; 35%-mud; 50%-oil)

Recovered 60 ft. of mud cut gassy oil = .295200 bbls. (Grind out: 2%-water; 15%-mud; 35%-gas; 48%-oil)

Recovered 100 ft. of TOTAL FLUID = .863200 bbls.

Recovered -- ft. of --

Remarks Tool Sample Grind Out: 1%-water; 10%-mud; 15%-gas; 74%-oil

Time Set Packer(s) 11:47 A.M. Time Started Off Bottom 2:47 P.M. Maximum Temperature 109°

Initial Hydrostatic Pressure (A) 2392 P.S.I.

Initial Flow Period Minutes 30 (B) 32 P.S.I. to (C) 44 P.S.I.

Initial Closed In Period Minutes 45 (D) 939 P.S.I.

Final Flow Period Minutes 45 (E) 48 P.S.I. to (F) 62 P.S.I.

Final Closed In Period Minutes 60 (G) 601 P.S.I.

Final Hydrostatic Pressure (H) 2299 P.S.I.



DIAMOND TESTING
 P.O. Box 157
HOISINGTON, KANSAS 67544
 (620) 653-7550 • (800) 542-7313

FLUID SAMPLE DATA

Company Ritchie Exploration, Inc.
 Lease & Well No. Lang 30C No. 1
 Date 12-22-04 Sec. 30 Twp. 30 S Range 25 W
 Formation Test No. 5 Interval Tested From 5,079 ft. to 5,089 ft. Total Depth 5,089 ft.
 Formation Marmaton

	<u>MUD PIT</u>	<u>RECOVERY</u>
Viscosity	<u>54</u> CP	<u>--</u> CP
Weight	<u>9.1</u>	<u>--</u>
Water Loss	<u>9.0</u> CC	<u>--</u> CC
PH Factor	<u>10.0</u>	<u>--</u>

	<u>RESISTIVITY</u>	<u>CHLORIDE CONTENT</u>
Recovery Water	<u>-- @ -- °F.</u>	<u>--</u> ppm
Recovery Mud	<u>-- @ -- °F.</u>	<u>--</u> ppm
Recovery Mud Filtrate	<u>-- @ -- °F.</u>	<u>--</u> ppm
Mud Pit Sample	<u>1.40 @ 50 °F.</u>	<u>5,900</u> ppm
Mud Pit Sample Filtrate	<u>1.50 @ 50 °F.</u>	<u>5,700</u> ppm

Sample Taken By JOHN C. RIEDL

Witness By Jeff Christian

Remarks Pit filtrate triton dish chlorides were 6,000 Ppm

GENERAL INFORMATION

Client Information:

Company: RITCHIE EXPLORATION INC

Contact: CRAIG CAULK

Phone: Fax: e-mail:

Site Information:

Contact: JEFF CHRISTIAN

Phone: Fax: e-mail:

Well Information:

Name: LANG 30C #1

Operator: RITCHIE EXPLORATION INC

Location-Downhole: DST 5 5079-5089

Location-Surface: S30/30S/25W CLARK COUNTY

Test Information:

Company: DIAMOND TESTING

Representative: JOHN RIEDL

Supervisor: JEFF CHRISTIAN

Test Type: CONVENTIONAL Job Number: D92

Test Unit: 2

Start Date: 2004/12/22 Start Time: 09:50:00

End Date: 2004/12/22 End Time: 17:45:00

Report Date: 2004/12/22 Prepared By: JOHN RIEDL

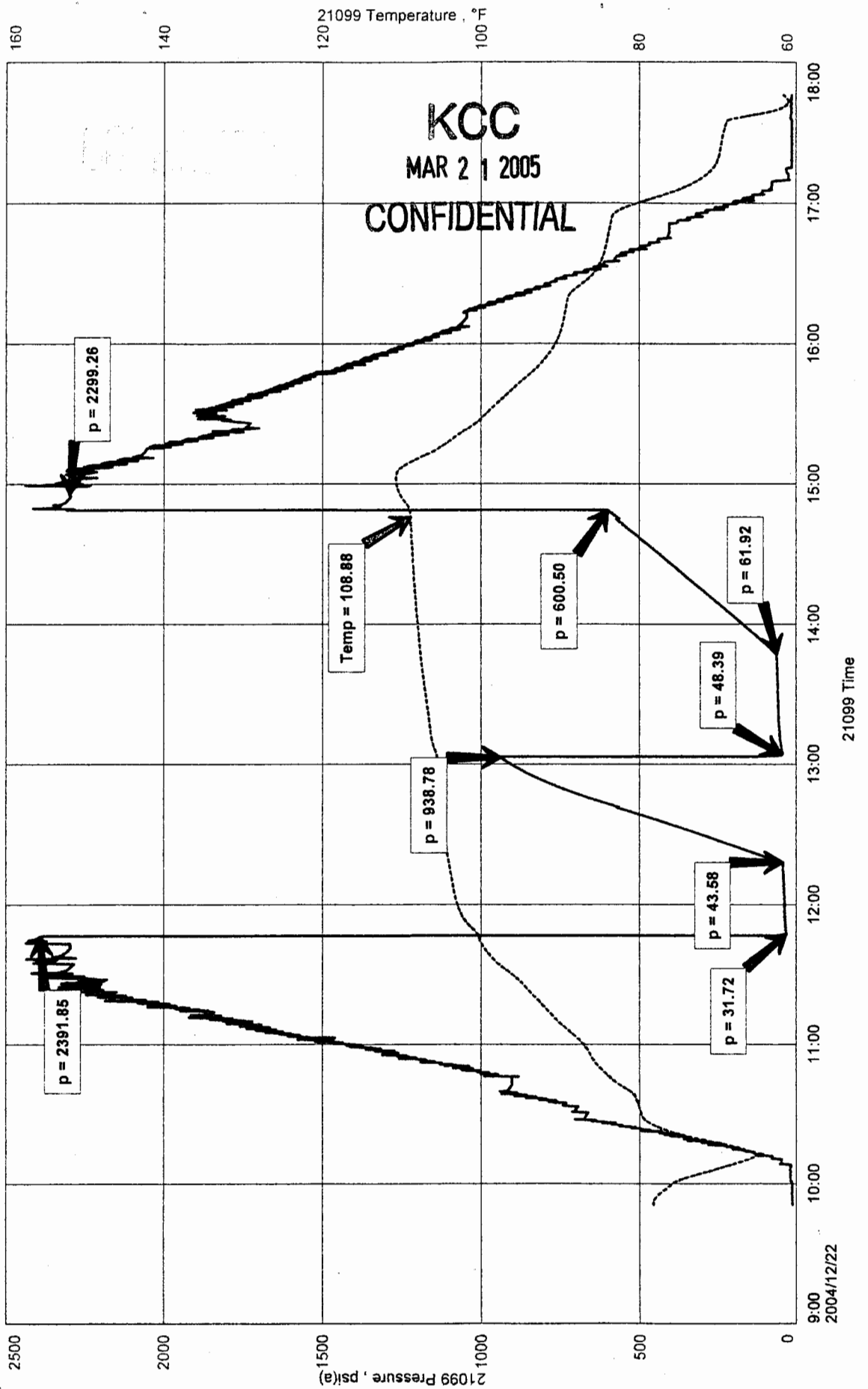
Qualified By: JEFF CHRISTIAN

Remarks:
REC. 1900' GIP 40' GM0 [15%GAS 35%MUD 50%OIL] 60' MCGO [2%WATER 15%MUG 35%GAS
48%OIL] TOTAL FLUID RECOVERY 100'

LANG 30C #1
Formation: MARMATON
Job Number: D92
30-30s-25w

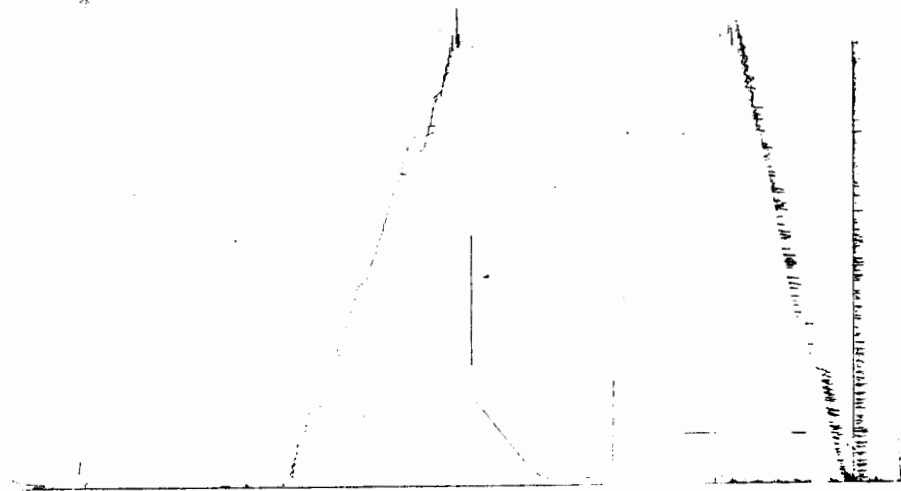
RITCHIE EXPLORATION INC
DST 5 5079-5089
Start Test Date: 2004/12/22
Final Test Date: 2004/12/22

LANG 30C #1



LIANG 300
KITCHIC

DST # 5 KOC # 1073 00840
586



This is an actual photograph of recorder chart.

POINT	PRESSURE		Elec. Office Reading	PSI
	Field Reading			
(A) Initial Hydrostatic Mud	2392	2392		PSI
(B) First Initial Flow Pressure	32	32		PSI
(C) First Final Flow Pressure	44	44		PSI
(D) Initial Closed-in Pressure	939	939		PSI
(E) Second Initial Flow Pressure	48	48		PSI
(F) Second Final Flow Pressure	62	62		PSI
(G) Final Closed-in Pressure	601	601		PSI
(H) Final Hydrostatic Mud	2299	2299		PSI



DIAMOND TESTING

P.O. Box 157
HOISINGTON, KANSAS 67544
(620) 653-7550 • (800) 542-7313
STC 21099.D93

KCC

MAR 21 2005

CONFIDENTIAL

Page 1 of 3 Pages

Company Ritchie Exploration, Inc. Lease & Well No. Lang 30C No. 1

Elevation 2586 KB Formation Mississippi/St. Louis Effective Pay -- Ft. Ticket No. J1585

Date 12-29-04 Sec. 30 Twp. 30S Range 25W County Clark State Kansas

Test Approved By Jeff Christian Diamond Representative John C. Riedl

Formation Test No. 6 Interval Tested from 5,560 ft. to 5,634 ft. Total Depth 5,634 ft.

Packer Depth 5,555 ft. Size 6 3/4 in. Packer Depth -- ft. Size -- in.

Packer Depth 5,560 ft. Size 6 3/4 in. Packer Depth -- ft. Size -- in.

Depth of Selective Zone Set -- ft.

Top Recorder Depth (Inside) 5,564 ft. Recorder Number 21099 Cap. 5,000 psi

Bottom Recorder Depth (Outside) 5,631 ft. Recorder Number 11073 Cap. 3,900 psi

Below Straddle Recorder Depth -- ft. Recorder Number -- Cap. -- psi

Drilling Contractor VAL Energy, Inc. - Rig 2 Drill Collar Length 60 ft. I.D. 2 1/4 in.

Mud Type Chemical Viscosity 53 Weight Pipe Length -- ft. I.D. -- in.

Weight 9.1 Water Loss 10.0 cc. Drill Pipe Length 5,474 ft. I.D. 3 1/2 in.

Chlorides 4,000 P.P.M. Test Tool Length 26 ft. Tool Size 3 1/2 - IF in.

Jars: Make Bowen Serial Number No. 2 Anchor Length 74 ft. Size 4 1/2 - FH in.

Did Well Flow? No Reversed Out No Surface Choke Size 1 in. Bottom Choke Size 5/8 in.

Main Hole Size 7 7/8 in. Tool Joint Size 4 1/2 - XH in.

Blow: 1st Open: Strong blow. Off bottom of bucket in 5 mins. No blow back during shut-in.

2nd Open: Strong blow. Off bottom of bucket in 30 secs. Decreasing to 5 ins. for last 20 mins. No blow back during shut-in.

Recovered 750 ft. of gas in pipe

Recovered 100 ft. of very slightly gas & water cut mud = .863200 bbls. (Grind out: 5%-gas; 5%-water; 90%-mud) Chlorides: 5,000 Ppm

Recovered -- ft. of

Recovered -- ft. of

Recovered -- ft. of

Remarks

Time Set Packer(s) 6:52 A.M. Time Started Off Bottom 9:52 A.M. Maximum Temperature 117°

Initial Hydrostatic Pressure (A) 2607 P.S.I.

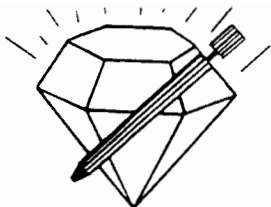
Initial Flow Period Minutes 30 (B) 41 P.S.I. to (C) 55 P.S.I.

Initial Closed In Period Minutes 45 (D) 1195 P.S.I.

Final Flow Period Minutes 45 (E) 49 P.S.I. to (F) 67 P.S.I.

Final Closed In Period Minutes 60 (G) 1242 P.S.I.

Final Hydrostatic Pressure (H) 2552 P.S.I.



DIAMOND TESTING
P.O. Box 157
HOISINGTON, KANSAS 67544
(620) 653-7550 • (800) 542-7313

FLUID SAMPLE DATA

Company Ritchie Exploration, Inc.

Lease & Well No. Lang 30C No. 1

Date 12-29-04 Sec. 30 Twp. 30 S Range 25 W

Formation Test No. 6 Interval Tested From 5,560 ft. to 5,634 ft. Total Depth 5,634 ft.

Formation Mississippi/St. Louis

	<u>MUD PIT</u>	<u>RECOVERY</u>
Viscosity	<u>53</u> CP	<u>65</u> CP
Weight	<u>9.1</u>	<u>9.4</u>
Water Loss	<u>10.0</u> CC	<u>9.0</u> CC
PH Factor	<u>10.5</u>	<u>10.0</u>

	<u>RESISTIVITY</u>	<u>CHLORIDE CONTENT</u>
Recovery Water	<u>-- @ -- °F.</u>	<u>-- ppm</u>
Recovery Mud	<u>1.30 @ 60 °F.</u>	<u>4,900 ppm</u>
Recovery Mud Filtrate	<u>1.30 @ 65 °F.</u>	<u>4,800 ppm</u>
Mud Pit Sample	<u>1.60 @ 55 °F.</u>	<u>4,700 ppm</u>
Mud Pit Sample Filtrate	<u>1.60 @ 60 °F.</u>	<u>4,300 ppm</u>

Sample Taken By JOHN C. RIEDL

Witness By Jeff Christian

Remarks Pit filtrate triton dish chlorides were 4,000 Ppm
Recovery filtrate triton dish chlorides were 5,000 Ppm

GENERAL INFORMATION

Client Information:

Company: RITCHIE EXPLORATION INC

Contact: CRAIG CAULK

Phone: Fax: e-mail:

Site Information:

Contact: JEFF CHRISTIAN

Phone: Fax: e-mail:

Well Information:

Name: LANG 30C #1

Operator: RITCHIE EXPLORATION INC

Location-Downhole: DST 6 5560-5634

Location-Surface: S30/3S/25W CLARK COUNTY

Test Information:

Company: DIAMOND TESTING

Representative: JOHN RIEDL

Supervisor: JEFF CHRISTIAN

Test Type: CONVENTIONAL Job Number: D93

Test Unit: 2

Start Date: 2004/12/29 Start Time: 04:08:00

End Date: 2004/12/29 End Time: 12:46:20

Report Date: 2004/12/29 Prepared By: JOHN RIEDL

Remarks: Qualified By: JEFF CHRISTIAN

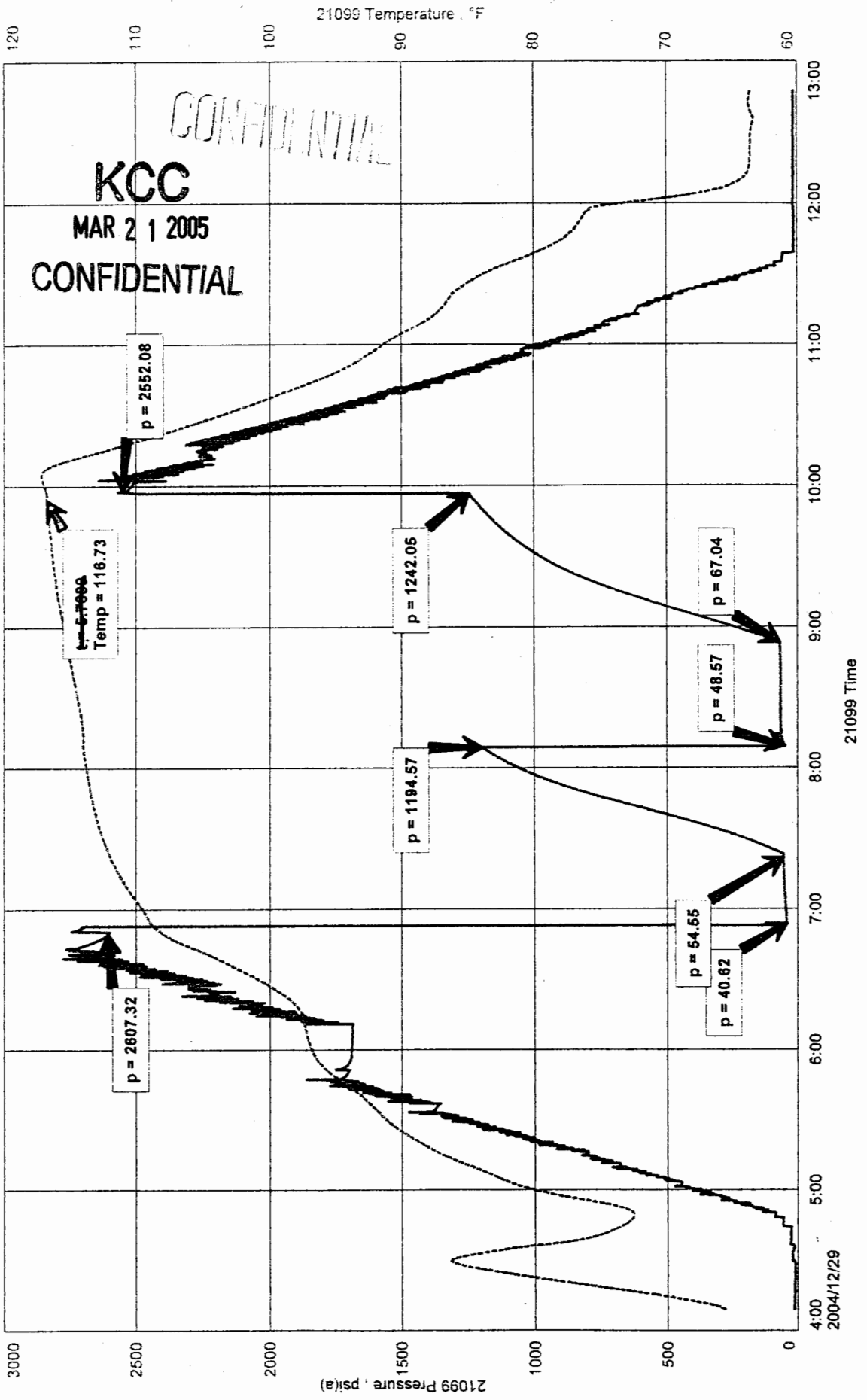
REC. 750' GIP 100' VSLW+GCM {5%WATER 5%GAS 90%MUD} CHLORIDES 5,000 Ppm

LANG 30C #1
Formation: MISSISSIPPI [ST LOUIS]
Job Number: D93

30-30s-25w

RITCHIE EXPLORATION INC
DST 6 5560-5634
Start Test Date: 2004/12/29
Final Test Date: 2004/12/29

LANG 30C #1



4-28-58 300 #1
~~WELL~~ 8780

OST #6 RSC #11578 300 #1
 LOC 5681



This is an actual photograph of recorder chart.

POINT	PRESSURE		Elec. Office Reading	PSI
	Field Reading			
(A) Initial Hydrostatic Mud	2607	2607		PSI
(B) First Initial Flow Pressure.....	41	41		PSI
(C) First Final Flow Pressure	55	55		PSI
(D) Initial Closed-in Pressure	1195	1195		PSI
(E) Second Initial Flow Pressure.....	49	49		PSI
(F) Second Final Flow Pressure.....	67	67		PSI
(G) Final Closed-in Pressure.....	1242	1242		PSI
(H) Final Hydrostatic Mud.....	2552	2552		PSI