

CORE ANALYSIS REPORT

Murfin Drilling
Patton 1-3
~~Carter~~ ^{CLARK} County, Kansas

File No. MCC-25

SEC-3-303-25W

GEO. FILE



CORE ANALYSIS

Company Patton 1-3 File no. 2/22/83
 Well Carter County Date 2/22/83
 Location Kansas Field _____
 State Kansas Page 1 of 3
 Remarks _____

Sample No.	INTERVAL from - to	POROSITY (%)	Grain DENSITY (gm/cc)	PERMEABILITY (md.)		Residual SATURATION (% Pore Vol.)		SAMPLE DESCRIPTION	Fracs.
				K MAX	K 90°	Oil	Water		
A	5290' - 5291'	0.5	2.71	.01	PLUG	∅	96.7	SH: blk, frm, mic mica.	
	5291' - 5292'							SH: blk, frm, v calc-lmy.	
	5292' - 5293'							LS: gy, crpxln, hd, dns, sl arg.	
	5293' - 5294'							LS: blk, crpxln, hd, arg-v arg.	
	5294' - 5295'							LS: dk gy, crpxln, hd, dns, arg.	
	5295' - 5296'							LS: tan-lt gy, crpxln, tr glau.	
	5296' - 5297'							LS: tan-lt gy, crpxln, tr glau.	
	5297' - 5298'							SH: grn, frm, calc, wxy ip, LS incl.	
	5298' - 5299'							SH: grn, frm, calc, wxy ip, LS incl.	
	5299' - 5300'							SH: grn, frm, calc, LS incl, v lmy ip.	
	5300' - 5301'							SH: grn, frm, calc, LS incl, v lmy ip.	
	5301' - 5302'							SH: gy-grn, frm, plty, calc.	
	5302' - 5303'							LS: brn, crpxln, occ maxl, hd, dns.	
	5303' - 5304'							SH: grn, sft, sm, wxy, sl calc.	
5304' - 5305'	SH: grn, brn ip, frm, calc.								
5305' - 5306'	SH: grn, frm, sm, aren.								

¹Empirical

²Calculated

³Assumed

Measured if not noted

*Fractured

Sample No.	INTERVAL from - to	POROSITY (%)	Grain DENSITY (gm/cc)	PERMEABILITY (md.)		Residual SATURATION (% Pore Vol.)		SAMPLE DESCRIPTION	Frac.
				K-MAX	K-90°	Oil	Water		
	5306' - 5307'							LS: brn, crpxln, hd, dns, foss.	
	5307' - 5308'							SH: grn, sft, v sl calc.	
	5308' - 5309'							SH: grn, hd, calc, aren, dk mnrl incl.	
	5309' - 5310'							SH: grn, sft, sm, wxy.	
	5310' - 5311'							SH: grn, frm, calc, v foss.	
	5311' - 5312'							SH: grn, sft, sm, wxy.	
	5312' - 5313'							LS: brn, crpxln, hd, dns.	
	5313' - 5314'							LS: dk gy, crp-micxln, hd, arg.	
	5314' - 5315'							LS: dk gy-blk, crpxln, hd, dns, arg.	
	5315' - 5316'							LS: brn, crpxln, hd, dns, tr foss.	
B	5316' - 5317'	2.6	2.76	.01	PLUG	∅	98.3	LS: brn, crpxln, hd, dns.	
1	5317' - 5318'	7.8	2.65	2.0	1.8	8.6	76.9	SS: clr, brn, vf-f gr, sb ang-w rd, w srt, p-m cons, sil cmt.	
2	5318' - 5319'	13.7	2.62	15.0	10.4	18.1	47.2	SS: clr, brn, vf-f gr, sb ang-w rd, w srt, p-m cons, sil cmt, lam w/ SH.	
3	5319' - 5320'	13.1	2.62	2.8	2.7	15.3	44.8	SS: clr, brn, vf-f gr, sb ang-w rd, w srt, p-m cons, sil cmt, lam w/ SH.	
4	5320' - 5321'	16.7	2.67	2.7	2.2	6.1	66.2	SS: clr, vf-f gr, sb ang-w rd, w srt, mod cons, sil cmt, calc ip.	

¹Empirical

²Calculated

³Assumed

Measured if not noted

^{*}Fractured

Sample No.	INTERVAL from - to	POROSITY (%)	Grain DENSITY (gm/cc)	PERMEABILITY (md.)		Residual SATURATION (% Pore Vol.)		SAMPLE DESCRIPTION	Frac.
				K-MAX	K-90°	Oil	Water		
5	5321' - 5322'	15.1	2.73	38.0	37.7	13.5	67.3	SS: clr, f-m gr, sb ang-sb rd, m srt, p cons, calc, cmt, lam w/SH.	
6	5322' - 5323'	17.4	2.65	70.3	51.0	10.9	69.8	SS: clr, f-m gr, sb ang-sb rnd, m srt, p cons, calc + sil cmt.	
7	5323' - 5324'	16.1	2.61	67.4	25.5	6.9	62.8	SS: clr, f gr, sb ang-sb rd, w srt, p cons, fri ip, sil cmt.	
8	5324' - 5325'	16.6	2.60	88.9	81.3	9.3	58.3	SS: clr, f gr, sb ang-sb rd, w srt, p cons, fri ip, sil cmt.	
9	5325' - 5326'	17.1	2.63	70.8	26.4	18.8	56.9	SS: clr, vf-f gr, sb ang-w rd, w srt, mod cons, sil cmt, calc cmt ip.	
10	5326' - 5327'	17.4	2.62	1.4	0.4	6.5	61.9	SS: clr, vf-f gr, sb ang-w rd, w srt, mod cons, sil cmt, calc cmt ip.	
11	5327' - 5328'	15.6	2.64	35.4	32.0	14.4	63.6	SS: clr, vf-f gr, sb ang-rd, p srt, p-mod cons, calc cmt, v SH ip.	
12	5328' - 5329'	13.6	2.66	22.9	6.6	12.7	60.9	SS: clr, vf-f gr, sb ang-rd, p srt, p-mod cons, calc cmt, v SH ip.	
	5329' - 5330'							SH: blk, frm, blk.	



Continental Laboratories

EB&G

CORE ANALYSIS DIVISION

7700 E. Iliff, Suite D Denver, Colorado 80231 (303)751-0180

Company: MURFIN DRILLING County: CLARK Date: 2/18/83
 Well: PATTON 1-3 State: KANSAS Elevation: _____
 Location: _____ Interval: 5290' to 5329'

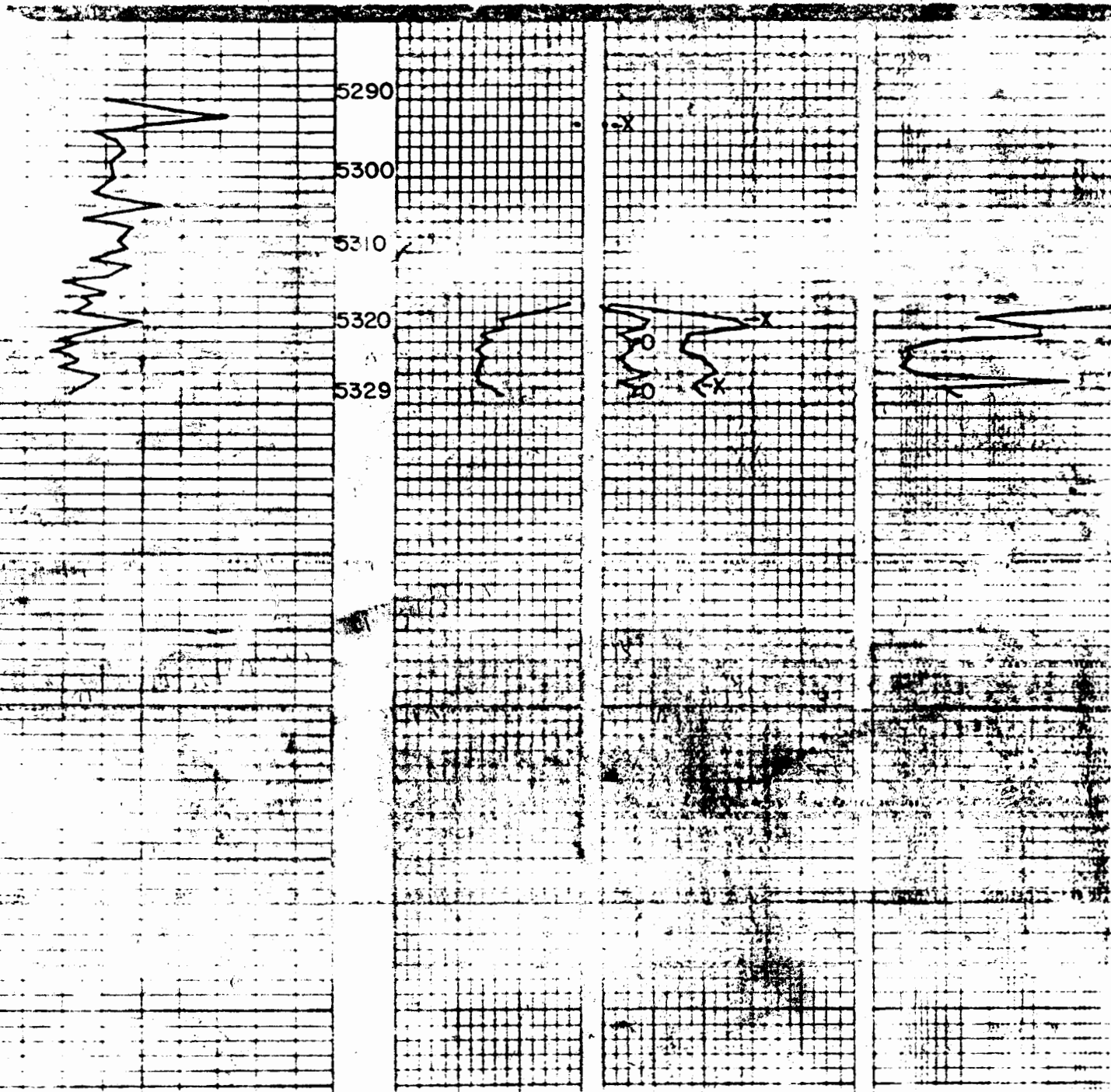
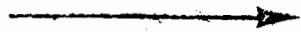
Gamma Log
(Increasing)

Porosity
(Percent)

Total Water Saturation-X

Permeability
(Millidarcys)

Oil Saturation-O





Continental Laboratories

CORE ANALYSIS DIVISION

7700 E. Iliff, Suite D · Denver, Colorado 80231 · (303) 751-0180

P.O. Box 75370 · Oklahoma City, Oklahoma 73107 · (405) 947-0662

Company: MURFIN DRILLING County: CLARK Date: 2/18/83
Well: PATTON 1-3 State: KANSAS Elevation: _____
Field: _____ Location: _____ Interval: 5290' to 5329'

Gamma Log
(Increasing)
→

Depth

Porosity %

30

20

10

0

5290
5300
5310
5320
5329

