



WESTERN TESTING CO., INC.
FORMATION TESTING

TICKET No 13287

P. O. BOX 1599 PHONE (316) 262-5861
WICHITA, KANSAS 67201

Elevation 1375 Kb Formation KC Eff. Pay Ft.

District Augusta Date 8-22-82 Customer Order No.

COMPANY NAME S I M W Energy Company Corporation
ADDRESS 4818 South Knoxville Tulsa Okla. 74135

LEASE AND WELL NO. Hemberger #3 COUNTY Sumner STATE Ka Sec. 29 Twp. 30S Rge. 3W

Mail Invoice To #3 HEMBERGER Co. Name Address No. Copies Requested 1

Mail Charts To Address No. Copies Requested 5

Formation Test No. I Interval Tested from 3281 ft. to 3305 ft. Total Depth 3305 ft.
Packer Depth 3281 ft. Size 6 3/4 in. Packer Depth ft. Size in.
Packer Depth 3276 ft. Size 6 3/4 in. Packer Depth ft. Size in.

Depth of Selective Zone Set
Top Recorder Depth (Inside) 3286 ft. Recorder Number 2605 Cap. 4150
Bottom Recorder Depth (Outside) 3290 ft. Recorder Number 1049 Cap. 4250
Below Straddle Recorder Depth ft. Recorder Number Cap.

Drilling Contractor W + E #7 Drill Collar Length 300 I. D. in.
Mud Type Starch Viscosity 150 Weight Pipe Length I. D. in.
Weight 9.7 Water Loss 6.4 cc. Drill Pipe Length 2946 I. D. in.
Chlorides 29000 P.P.M. Test Tool Length 25 ft. Tool Size 5 1/2 in.
Jars: Make WTC Serial Number 402 Anchor Length 24 ft. Size 5 1/2 in.
Did Well Flow? NO Reversed Out NO Surface Choke Size 3/4 in. Bottom Choke Size 3/4 in.
Main Hole Size 7 7/8 in. Tool Joint Size 4 1/2 x 4 in.

Blow: Weak blow died in 4 min first flow, No blow second flow

Recovered 20 ft. of mud with show of free oil on top of tool
Recovered ft. of
Recovered ft. of
Recovered ft. of
Recovered ft. of
Remarks:

5 led tool 4 feet to Bottom

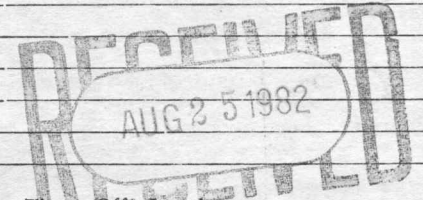


Table with columns: Time On Location, Time Pick Up Tool, Time Off Location, Time Set Packer(s), Time Started Off Bottom, Maximum Temperature, Initial Hydrostatic Pressure, Initial Flow Period, Initial Closed In Period, Final Flow Period, Final Closed In Period, Final Hydrostatic Pressure. Includes handwritten values like 12:40, 30, 60, 30, 60, 1644, 0, 1037, 42, 767, 1644.

COMPANY TERMS

Western Testing Co., Inc. shall not be liable for damages of any kind to the property or personnel of the one for whom a test is made or for any loss suffered or sustained directly or indirectly through the use of its equipment, of its statements or opinion concerning the results of any test. Tools lost or damaged in the hole shall be paid at cost by the party for whom the test is made.

All charges subject to 12% interest after 60 days from date of invoice. Any expense incurred for collection will be added to the original amount.

Test Approved By Douglas J. [Signature]
Signature of Customer or his authorized representative
Western Representative Kenny Kirkendall [Signature]

FIELD INVOICE

Table with columns: Item, Price. Includes Open Hole Test \$600.00, Misrun \$, Straddle Test \$, Jars \$300.00, Selective Zone \$, Safety Joint \$, Standby \$, Evaluation \$, Extra Packer \$, Circ. Sub \$, Mileage \$, Fluid Sampler \$, Extra Charts \$, Insurance \$, TOTAL \$900.00.

WESTERN TESTING CO., INC.

Pressure Data

Date: 8-22 Test Ticket No. 13287  
 Recorder No. 2605 Capacity 4150 Location 3286 Ft  
 Clock No. --- Elevation 1375 KB Well Temperature 118 °F

Point	Pressure	Time Given	Time Computed
A Initial Hydrostatic Mud	<u>1673</u> P.S.I.	<u>12:40</u> A	<u>M</u>
B First Initial Flow Pressure	<u>5</u> P.S.I.	<u>30</u> Mins.	<u>30</u> Mins.
C First Final Flow Pressure	<u>19</u> P.S.I.	<u>60</u> Mins.	<u>60</u> Mins.
D Initial Closed-in Pressure	<u>1039</u> P.S.I.	<u>30</u> Mins.	<u>30</u> Mins.
E Second Initial Flow Pressure	<u>46</u> P.S.I.	<u>60</u> Mins.	<u>60</u> Mins.
F Second Final Flow Pressure	<u>46</u> P.S.I.		
G Final Closed-in Pressure	<u>784</u> P.S.I.		
H Final Hydrostatic Mud	<u>1644</u> P.S.I.		

PRESSURE BREAKDOWN

First Flow Pressure  
 Breakdown: 6 Inc.  
 of 5 mins. and a  
 final inc. of 0 Min.

Initial Shut-In  
 Breakdown: 20 Inc.  
 of 3 mins. and a  
 final inc. of 0 Min.

Second Flow Pressure  
 Breakdown: 6 Inc.  
 of 5 mins. and a  
 final inc. of 0 Min.

Final Shut-In  
 Breakdown: 20 Inc.  
 of 3 mins. and a  
 final inc. of 0 Min.

Point Mins.	Press.	Point Minutes	Press.	Point Minutes	Press.	Point Minutes	Press.
P 1	<u>5</u>	0	<u>19</u>	0	<u>46</u>	0	<u>46</u>
P 2	<u>5</u>	3	<u>19</u>	5		3	<u>46</u>
P 3	<u>7</u>	6	<u>20</u>	10		6	<u>47</u>
P 4	<u>12</u>	9	<u>23</u>	15		9	<u>50</u>
P 5	<u>17</u>	12	<u>34</u>	20		12	<u>54</u>
P 6	<u>18</u>	15	<u>51</u>	25		15	<u>60</u>
P 7	<u>19</u>	18	<u>95</u>	30	<u>46</u>	18	<u>68</u>
P 8		21	<u>157</u>	35		21	<u>76</u>
P 9		24	<u>258</u>	40		24	<u>92</u>
P10		27	<u>379</u>	45		27	<u>121</u>
P11		30	<u>486</u>	50		30	<u>158</u>
P12		33	<u>597</u>	55		33	<u>213</u>
P13		36	<u>697</u>	60		36	<u>277</u>
P14		39	<u>782</u>	65		39	<u>354</u>
P15		42	<u>848</u>	70		42	<u>433</u>
P16		45	<u>902</u>	75		45	<u>510</u>
P17		48	<u>949</u>	80		48	<u>585</u>
P18		51	<u>981</u>	85		51	<u>658</u>
P19		54	<u>1007</u>	90		54	<u>720</u>
P20		57	<u>1029</u>			57	<u>767</u>
		60	<u>1039</u>			60	<u>784</u>

Company S L M W Energy Corporation Lease & Well No. #3 Hemberger  
 Elevation 1375 Kelly Bushing Formation Kansas City Effective Pay - Ft. Ticket No. 13287  
 Date 8/22/82 Sec. 29 Twp. 30S Range 3W County Sumner State Kansas  
 Test Approved by Douglas V. Davis, Jr. Western Representative Kenny Kirkendall

Formation Test No. 1 Interval Tested from 3281 ft. to 3305 ft. Total Depth 3305 ft.  
 Packer Depth 3281 ft. Size 6 3/4 in. Packer Depth - ft. Size - in.  
 Packer Depth 3276 ft. Size 6 3/4 in. Packer Depth - ft. Size - in.  
 Depth of Selective Zone Set -

Top Recorder Depth (Inside) 3286 ft. Recorder Number 2605 Cap. 4150  
 Bottom Recorder Depth (Outside) 3290 ft. Recorder Number 1049 Cap. 4250  
 Below Straddle Recorder Depth - ft. Recorder Number - Cap. -  
 Drilling Contractor White & Ellis Drlg. Rig #7 Drill Collar Length 300 I. D. - in.  
 Mud Type starch Viscosity 150 Weight Pipe Length - I. D. - in.  
 Weight 9.7 Water Loss 6.4 cc. Drill Pipe Length 2946 I. D. - in.  
 Chlorides 29,000 P.P.M. Test Tool Length 25 ft. Tool Size 5 1/2 in.  
 Jars: Make WTC Serial Number 402 Anchor Length 24 ft. Size 5 1/2 in.  
 Did Well Flow? No Reversed Out - Surface Choke Size 3/4 in. Bottom Choke Size 3/4 in.  
 Main Hole Size 7 7/8 in. Tool Joint Size 4 1/2 XH in.

Blow: Weak blow died in four minutes on initial flow period. No blow on final flow period.

Recovered 20 ft. of mud with show of free oil on top of tool  
 Recovered - ft. of -  
 Recovered - ft. of -  
 Recovered - ft. of -  
 Recovered - ft. of -

Remarks: -

Slid tool four feet to bottom.

Time Set Packer(s) 12:40 ~~P.M.~~ A.M. Time Started Off Bottom --- ~~P.M.~~ A.M. Maximum Temperature 118°  
 Initial Hydrostatic Pressure 1673 P.S.I. (A)  
 Initial Flow Period 30 Minutes (B) 5 P.S.I. to (C) 19 P.S.I.  
 Initial Closed In Period 60 Minutes (D) 1039 P.S.I.  
 Final Flow Period 30 Minutes (E) 46 P.S.I. to (F) 46 P.S.I.  
 Final Closed In Period 60 Minutes (G) 784 P.S.I.  
 Final Hydrostatic Pressure 1644 P.S.I. (H)

**WESTERN TESTING CO., INC.**  
**Pressure Data**

Date 8/22/82

Test Ticket No. 13287

Recorder No. 2605 Capacity 4150 Location 3286 Ft.

Clock No. - Elevation 1375 Kelly Bushing Well Temperature 118 °F

Point	Pressure			Time	
				Given	Computed
A	Initial Hydrostatic Mud	<u>1673</u>	P.S.I.	Open Tool	<u>12:40A</u> M
B	First Initial Flow Pressure	<u>5</u>	P.S.I.	First Flow Pressure	<u>30</u> Mins. <u>30</u> Mins.
C	First Final Flow Pressure	<u>19</u>	P.S.I.	Initial Closed-in Pressure	<u>60</u> Mins. <u>60</u> Mins.
D	Initial Closed-in Pressure	<u>1039</u>	P.S.I.	Second Flow Pressure	<u>30</u> Mins. <u>30</u> Mins.
E	Second Initial Flow Pressure	<u>46</u>	P.S.I.	Final Closed-in Pressure	<u>60</u> Mins. <u>60</u> Mins.
F	Second Final Flow Pressure	<u>46</u>	P.S.I.		
G	Final Closed-in Pressure	<u>784</u>	P.S.I.		
H	Final Hydrostatic Mud	<u>1644</u>	P.S.I.		

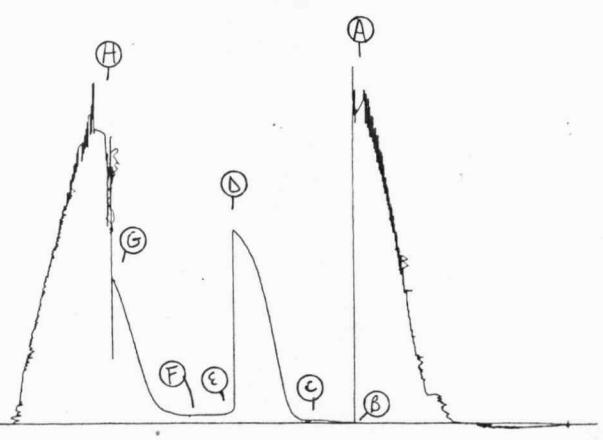
**PRESSURE BREAKDOWN**

Point Mins.	First Flow Pressure Breakdown: <u>6</u> Inc.		Initial Shut-In Breakdown: <u>20</u> Inc.		Second Flow Pressure Breakdown: <u>6</u> Inc.		Final Shut-In Breakdown: <u>20</u> Inc.	
	Press.	Point Minutes	Press.	Point Minutes	Press.	Point Minutes	Press.	Point Minutes
P 1	<u>5</u>	<u>0</u>	<u>19</u>	<u>0</u>	<u>46</u>	<u>0</u>	<u>46</u>	<u>0</u>
P 2	<u>5</u>	<u>3</u>	<u>19</u>	<u>3</u>	<u>46</u>	<u>5</u>	<u>46</u>	<u>3</u>
P 3	<u>7</u>	<u>6</u>	<u>20</u>	<u>6</u>	<u>46</u>	<u>10</u>	<u>46</u>	<u>6</u>
P 4	<u>12</u>	<u>9</u>	<u>23</u>	<u>9</u>	<u>46</u>	<u>15</u>	<u>46</u>	<u>9</u>
P 5	<u>17</u>	<u>12</u>	<u>34</u>	<u>12</u>	<u>46</u>	<u>20</u>	<u>46</u>	<u>12</u>
P 6	<u>18</u>	<u>15</u>	<u>51</u>	<u>15</u>	<u>46</u>	<u>25</u>	<u>46</u>	<u>15</u>
P 7	<u>19</u>	<u>18</u>	<u>95</u>	<u>18</u>	<u>46</u>	<u>30</u>	<u>46</u>	<u>18</u>
P 8		<u>21</u>	<u>157</u>	<u>21</u>				<u>21</u>
P 9		<u>24</u>	<u>258</u>	<u>24</u>				<u>24</u>
P10		<u>27</u>	<u>379</u>	<u>27</u>				<u>27</u>
P11		<u>30</u>	<u>486</u>	<u>30</u>				<u>30</u>
P12		<u>33</u>	<u>597</u>	<u>33</u>				<u>33</u>
P13		<u>36</u>	<u>697</u>	<u>36</u>				<u>36</u>
P14		<u>39</u>	<u>782</u>	<u>39</u>				<u>39</u>
P15		<u>42</u>	<u>848</u>	<u>42</u>				<u>42</u>
P16		<u>45</u>	<u>902</u>	<u>45</u>				<u>45</u>
P17		<u>48</u>	<u>949</u>	<u>48</u>				<u>48</u>
P18		<u>51</u>	<u>981</u>	<u>51</u>				<u>51</u>
P19		<u>54</u>	<u>1007</u>	<u>54</u>				<u>54</u>
P20		<u>57</u>	<u>1029</u>	<u>57</u>				<u>57</u>
		<u>60</u>	<u>1039</u>	<u>60</u>				<u>60</u>

TKT # 13287

DST # 1  
2605

I





WESTERN TESTING CO., INC.
FORMATION TESTING

TICKET No 13288

OK

O. BOX 1599 PHONE (316) 262-5861
WICHITA, KANSAS 67201

Elevation 1375 Kb Formation KC Eff. Pay Ft.

District Augusta Date 8-22-82 Customer Order No.

COMPANY NAME SLMW Energy Corp
ADDRESS 4818 South KNOXWOOD tULSA OK. 74135

WELL NO Hemberger #3 COUNTY Sumner STATE KS Sec 29 Twp 30S Rge 3W
Bill Invoice To Same #3 HEMBERGER No. Copies Requested 1

Co. Name Address No. Copies Requested 5

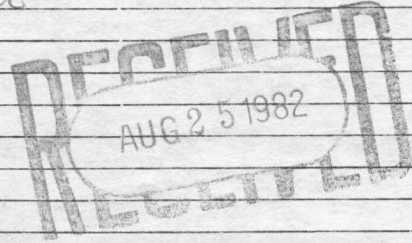
Formation Test No. II Interval Tested from 3375 ft. to 3389 ft. Total Depth 3389 ft.
Packer Depth 3375 ft. Size 6 3/4 in. Packer Depth ft. Size in.
Packer Depth 3370 ft. Size 6 3/4 in. Packer Depth ft. Size in.

Depth of Selective Zone Set
Packer Recorder Depth (Inside) 3380 ft. Recorder Number 2605 Cap. 4160
Bottom Recorder Depth (Outside) 3384 ft. Recorder Number 1049 Cap. 4250
Flow Straddle Recorder Depth ft. Recorder Number Cap.

Drilling Contractor WJE #7 Drill Collar Length 300 I. D. in.
Pipe Type 7 1/2 Viscosity 60 Weight Pipe Length I. D. in.
Weight 9.6 Water Loss 5.6 cc. Drill Pipe Length I. D. in.
P.P.M. Test Tool Length 25 ft. Tool Size 5 1/2 in.
Serial Number 402 Anchor Length 14 1/4 ft. Size 5 1/2 in.
Reversed Out yes Surface Choke Size 3/4 in. Bottom Choke Size 3/4 in.
Main Hole Size 7 1/4 in. Tool Joint Size 4 1/2 x 1 1/2 in.

Flow: weak building to good first flow, fair blow second flow

covered 720 ft. of Salt water
covered ft. of
covered ft. of
covered ft. of
covered ft. of
marks:



68,000 PPM

Table with columns: Time On Location, Time Pick Up Tool, Time Off Location, Time Started Off Bottom, Maximum Temperature, and various pressure/flow test results (A-H).

COMPANY TERMS
Western Testing Co., Inc. shall not be liable for damages of any kind to the property or personnel of the one for whom a test is made...
All charges subject to 12% interest after 60 days from date of invoice. Any expense incurred for collection will be added to the original amount.
Test Approved By Douglas V. Dennis Jr.
Signature of Customer or his authorized representative
Western Representative Kenny Kirkendall

FIELD INVOICE table listing items and costs: Open Hole Test \$600.00, Misrun \$, Straddle Test \$, Jars \$300.00, Selective Zone \$, Safety Joint \$65.00, Standby \$, Evaluation \$, Extra Packer \$, Circ. Sub. \$35.00, Mileage \$, Fluid Sampler \$, Extra Charts \$, Insurance \$, TOTAL \$1000.00

WESTERN TESTING CO., INC.

Pressure Data

Date 8-22 Test Ticket No. 13288  
 Recorder No. 2605 Capacity 4150 Location 3380 Ft.  
 Clock No. --- Elevation 1375 KB Well Temperature 120 °F

Point	Pressure		Time Given	Time Computed
A Initial Hydrostatic Mud	<u>1680</u>	P.S.I.	<u>11:30 P</u>	<u>M</u>
B First Initial Flow Pressure	<u>57</u>	P.S.I.	<u>30</u> Mins.	<u>30</u> Mins.
C First Final Flow Pressure	<u>176</u>	P.S.I.	<u>60</u> Mins.	<u>60</u> Mins.
D Initial Closed-in Pressure	<u>1227</u>	P.S.I.	<u>60</u> Mins.	<u>60</u> Mins.
E Second Initial Flow Pressure	<u>257</u>	P.S.I.	<u>90</u> Mins.	<u>93</u> Mins.
F Second Final Flow Pressure	<u>385</u>	P.S.I.		
G Final Closed-in Pressure	<u>1223</u>	P.S.I.		
H Final Hydrostatic Mud	<u>1642</u>	P.S.I.		

PRESSURE BREAKDOWN

First Flow Pressure		Initial Shut-In		Second Flow Pressure		Final Shut-In	
Breakdown: <u>6</u> Inc.		Breakdown: <u>20</u> Inc.		Breakdown: <u>12</u> Inc.		Breakdown: <u>31</u> Inc.	
of <u>5</u> mins. and a		of <u>3</u> mins. and a		of <u>5</u> mins. and a		of <u>3</u> mins. and a	
final inc. of <u>0</u> Min.		final inc. of <u>0</u> Min.		final inc. of <u>0</u> Min.		final inc. of <u>0</u> Min.	
Point Mins.	Press.	Point Minutes	Press.	Point Minutes	Press.	Point Minutes	Press.
P 1	<u>0</u>	<u>0</u>	<u>176</u>	<u>0</u>	<u>257</u>	<u>0</u>	<u>385</u>
P 2	<u>5</u>	<u>3</u>	<u>1124</u>	<u>5</u>	<u>257</u>	<u>3</u>	<u>1107</u>
P 3	<u>10</u>	<u>6</u>	<u>1161</u>	<u>10</u>	<u>257</u>	<u>6</u>	<u>1151</u>
P 4	<u>15</u>	<u>9</u>	<u>1178</u>	<u>15</u>	<u>262</u>	<u>9</u>	<u>1170</u>
P 5	<u>20</u>	<u>12</u>	<u>1192</u>	<u>20</u>	<u>275</u>	<u>12</u>	<u>1180</u>
P 6	<u>25</u>	<u>15</u>	<u>1198</u>	<u>25</u>	<u>283</u>	<u>15</u>	<u>1188</u>
P 7	<u>30</u>	<u>18</u>	<u>1204</u>	<u>30</u>	<u>296</u>	<u>18</u>	<u>1193</u>
P 8	<u>35</u>	<u>21</u>	<u>1209</u>	<u>35</u>	<u>312</u>	<u>21</u>	<u>1198</u>
P 9	<u>40</u>	<u>24</u>	<u>1212</u>	<u>40</u>	<u>328</u>	<u>24</u>	<u>1201</u>
P10	<u>45</u>	<u>27</u>	<u>1215</u>	<u>45</u>	<u>342</u>	<u>27</u>	<u>1203</u>
P11	<u>50</u>	<u>30</u>	<u>1217</u>	<u>50</u>	<u>358</u>	<u>30</u>	<u>1205</u>
P12	<u>55</u>	<u>33</u>	<u>1219</u>	<u>55</u>	<u>372</u>	<u>33</u>	<u>1207</u>
P13	<u>60</u>	<u>36</u>	<u>1221</u>	<u>60</u>	<u>385</u>	<u>36</u>	<u>1209</u>
P14		<u>39</u>	<u>1222</u>	<u>65</u>		<u>39</u>	<u>1211</u>
P15		<u>42</u>	<u>1223</u>	<u>70</u>		<u>42</u>	<u>1212</u>
P16		<u>45</u>	<u>1224</u>	<u>75</u>		<u>45</u>	<u>1213</u>
P17		<u>48</u>	<u>1225</u>	<u>80</u>		<u>48</u>	<u>1214</u>
P18		<u>51</u>	<u>1226</u>	<u>85</u>		<u>51</u>	<u>1215</u>
P19		<u>54</u>	<u>1227</u>	<u>90</u>		<u>54</u>	<u>1216</u>
P20		<u>57</u>	<u>1227</u>			<u>57</u>	<u>1217</u>
		<u>60</u>	<u>1227</u>			<u>60</u>	<u>1218</u>

*com'k*

**WESTERN TESTING CO., INC.**  
**Pressure Data**

Date \_\_\_\_\_ Test Ticket No. 13288  
 Recorder No. \_\_\_\_\_ Capacity \_\_\_\_\_ Location \_\_\_\_\_ Ft.  
 Clock No. \_\_\_\_\_ Elevation \_\_\_\_\_ Well Temperature \_\_\_\_\_ °F

Point	Pressure		Time Given	Time Computed
A Initial Hydrostatic Mud	P.S.I.	Open Tool	_____ M	_____
B First Initial Flow Pressure	P.S.I.	First Flow Pressure	_____ Mins.	_____ Mins.
C First Final Flow Pressure	P.S.I.	Initial Closed-in Pressure	_____ Mins.	_____ Mins.
D Initial Closed-in Pressure	P.S.I.	Second Flow Pressure	_____ Mins.	_____ Mins.
E Second Initial Flow Pressure	P.S.I.	Final Closed-in Pressure	_____ Mins.	_____ Mins.
F Second Final Flow Pressure	P.S.I.			
G Final Closed-in Pressure	P.S.I.			
H Final Hydrostatic Mud	P.S.I.			

**PRESSURE BREAKDOWN**

First Flow Pressure		Initial Shut-In		Second Flow Pressure		Final Shut-In	
Breakdown: _____ Inc.		Breakdown: _____ Inc.		Breakdown: _____ Inc.		Breakdown: _____ Inc.	
of <u>5</u> mins. and a		of <u>3</u> mins. and a		of <u>5</u> mins. and a		of <u>3</u> mins. and a	
final inc. of <u>0</u> Min.		final inc. of <u>0</u> Min.		final inc. of <u>0</u> Min.		final inc. of <u>0</u> Min.	
Point Mins.	Press.	Point Minutes	Press.	Point Minutes	Press.	Point Minutes	Press.
P 1	_____	63	_____	_____	_____	63	<u>1219</u>
P 2	_____	66	_____	_____	_____	66	<u>1220</u>
P 3	_____	69	_____	_____	_____	69	<u>1221</u>
P 4	_____	72	_____	_____	_____	72	<u>1222</u>
P 5	_____	75	_____	_____	_____	75	<u>1223</u>
P 6	_____	78	_____	_____	_____	78	_____
P 7	_____	81	_____	_____	_____	81	_____
P 8	_____	84	_____	_____	_____	84	_____
P 9	_____	87	_____	_____	_____	87	_____
P10	_____	90	_____	_____	_____	90	_____
P11	_____	93	_____	_____	_____	93	<u>1223</u>
P12	_____	96	_____	_____	_____	96	_____
P13	_____	99	_____	_____	_____	99	_____
P14	_____	102	_____	_____	_____	102	_____
P15	_____	105	_____	_____	_____	105	_____
P16	_____	108	_____	_____	_____	108	_____
P17	_____	111	_____	_____	_____	111	_____
P18	_____	114	_____	_____	_____	114	_____
P19	_____	117	_____	_____	_____	117	_____
P20	_____	120	_____	_____	_____	120	_____

Company S L M W Energy Corporation Lease & Well No. #3 Hemberger  
 Elevation 1375 Kelly Bushing Formation Kansas City Effective Pay - Ft. Ticket No. 13288  
 Date 8/22/82 Sec. 29 Twp. 30S Range 3W County Sumner State Kansas  
 Test Approved by Douglas V. Davis, Jr. Western Representative Kenny Kirkendall

Formation Test No. 2 Interval Tested from 3375 ft. to 3389 ft. Total Depth 3389 ft.  
 Packer Depth 3375 ft. Size 6 3/4 in. Packer Depth - ft. Size - in.  
 Packer Depth 3370 ft. Size 6 3/4 in. Packer Depth - ft. Size - in.  
 Depth of Selective Zone Set -

Top Recorder Depth (Inside) 3380 ft. Recorder Number 2605 Cap. 4150  
 Bottom Recorder Depth (Outside) 3384 ft. Recorder Number 1049 Cap. 4250  
 Below Straddle Recorder Depth - ft. Recorder Number - Cap. -

Drilling Contractor White & Ellis Drlg. Rig #7 Drill Collar Length 300 I. D. - in.  
 Mud Type starch Viscosity 60 Weight Pipe Length - I. D. - in.  
 Weight 9.6 Water Loss 5.6 cc. Drill Pipe Length - I. D. - in.  
 Chlorides 31,000 P.P.M. Test Tool Length 25 ft. Tool Size 5 1/2 in.  
 Jars: Make WTC Serial Number 402 Anchor Length 14 ft. Size 5 1/2 in.  
 Did Well Flow? No Reversed Out Yes Surface Choke Size 3/4 in. Bottom Choke Size 3/4 in.  
 Main Hole Size 7 7/8 in. Tool Joint Size 4 1/2 XH in.

Blow: Weak blow building to good blow on initial flow period. Fair blow on final flow period.

Recovered 720 ft. of salt water  
 Recovered - ft. of -  
 Recovered - ft. of -  
 Recovered - ft. of Chlorides 68,000 ppm  
 Recovered - ft. of -

Remarks: -

Time Set Packer(s) 11:30 ~~A.M.~~ P.M. Time Started Off Bottom 3:30 ~~A.M.~~ P.M. Maximum Temperature 120°  
 Initial Hydrostatic Pressure (A) 1680 P.S.I.  
 Initial Flow Period Minutes 30 (B) 57 P.S.I. to (C) 176 P.S.I.  
 Initial Closed In Period Minutes 60 (D) 1227 P.S.I.  
 Final Flow Period Minutes 60 (E) 257 P.S.I. to (F) 385 P.S.I.  
 Final Closed In Period Minutes 93 (G) 1223 P.S.I.  
 Final Hydrostatic Pressure (H) 1642 P.S.I.

**WESTERN TESTING CO., INC.**

**Pressure Data**

Date 8/22/82 Test Ticket No. 13288  
 Recorder No. 2605 Capacity 4150 Location 3380 Ft.  
 Clock No. -- Elevation 1375 Kelly Bushing Well Temperature 120 °F

Point	Pressure			Time Given	Time Computed
A Initial Hydrostatic Mud	1680	P.S.I.	Open Tool	11:30P M	
B First Initial Flow Pressure	57	P.S.I.	First Flow Pressure	30 Mins.	30 Mins.
C First Final Flow Pressure	176	P.S.I.	Initial Closed-in Pressure	60 Mins.	60 Mins.
D Initial Closed-in Pressure	1227	P.S.I.	Second Flow Pressure	60 Mins.	60 Mins.
E Second Initial Flow Pressure	257	P.S.I.	Final Closed-in Pressure	90 Mins.	93 Mins.
F Second Final Flow Pressure	385	P.S.I.			
G Final Closed-in Pressure	1223	P.S.I.			
H Final Hydrostatic Mud	1642	P.S.I.			

**PRESSURE BREAKDOWN**

**First Flow Pressure**  
 Breakdown: 6 Inc.  
 of 5 mins. and a  
 final inc. of 0 Min.

**Initial Shut-In**  
 Breakdown: 20 Inc.  
 of 3 mins. and a  
 final inc. of 0 Min.

**Second Flow Pressure**  
 Breakdown: 12 Inc.  
 of 5 mins. and a  
 final inc. of 0 Min.

**Final Shut-In**  
 Breakdown: 31 Inc.  
 of 3 mins. and a  
 final inc. of 0 Min.

Point Mins.	Press.	Point Minutes	Press.	Point Minutes	Press.	Point Minutes	Press.
P 1 0	57	0	176	0	257	0	385
P 2 5	62	3	1124	5	257	3	1107
P 3 10	82	6	1161	10	257	6	1151
P 4 15	102	9	1178	15	262	9	1170
P 5 20	147	12	1192	20	275	12	1180
P 6 25	168	15	1198	25	283	15	1188
P 7 30	176	18	1204	30	296	18	1193
P 8		21	1209	35	312	21	1198
P 9		24	1212	40	328	24	1201
P10		27	1215	45	342	27	1203
P11		30	1217	50	358	30	1205
P12		33	1219	55	372	33	1207
P13		36	1221	60	385	36	1209
P14		39	1222			39	1211
P15		42	1223			42	1212
P16		45	1224			45	1213
P17		48	1225			48	1214
P18		51	1226			51	1215
P19		54	1227			54	1216
P20		57	1227			57	1217
WTC - 4		60	1227			60	1218

**WESTERN TESTING CO., INC.**

**Pressure Data**

Date 8/22/82 Test Ticket No. 13288  
 Recorder No. 2605 Capacity 4150 Location 3380 Ft.  
 Clock No. -- Elevation 1375 Kelly Bushing Well Temperature 120 °F

Point	Pressure		Time Given	Time Computed
A Initial Hydrostatic Mud	<u>1680</u>	P.S.I.	<u>11:30P</u> M	
B First Initial Flow Pressure	<u>57</u>	P.S.I.	<u>30</u> Mins.	<u>30</u> Mins.
C First Final Flow Pressure	<u>176</u>	P.S.I.	<u>60</u> Mins.	<u>60</u> Mins.
D Initial Closed-in Pressure	<u>1227</u>	P.S.I.	<u>60</u> Mins.	<u>60</u> Mins.
E Second Initial Flow Pressure	<u>257</u>	P.S.I.	<u>90</u> Mins.	<u>93</u> Mins.
F Second Final Flow Pressure	<u>385</u>	P.S.I.		
G Final Closed-in Pressure	<u>1223</u>	P.S.I.		
H Final Hydrostatic Mud	<u>1642</u>	P.S.I.		

**PRESSURE BREAKDOWN**

**First Flow Pressure**  
 Breakdown: 6 Inc.  
 of 5 mins. and a  
 final inc. of 0 Min.

**Initial Shut-In**  
 Breakdown: 20 Inc.  
 of 3 mins. and a  
 final inc. of 0 Min.

**Second Flow Pressure**  
 Breakdown: 12 Inc.  
 of 5 mins. and a  
 final inc. of 0 Min.

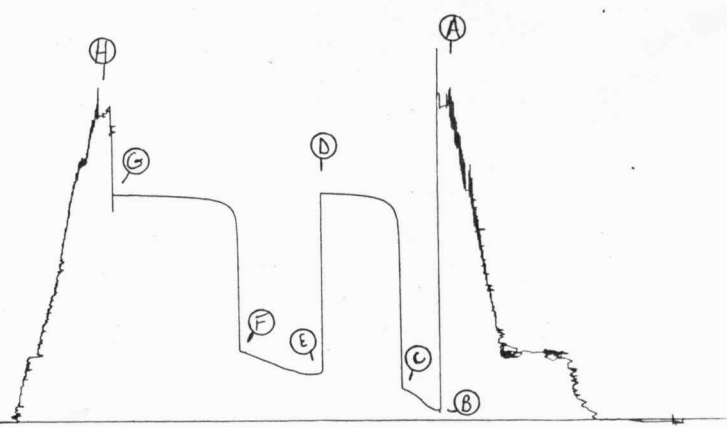
**Final Shut-In**  
 Breakdown: 31 Inc.  
 of 3 mins. and a  
 final inc. of 0 Min.

Point Mins.	Press.	Point Minutes	Press.	Point Minutes	Press.	Point Minutes	Press.
P 1						<u>63</u>	<u>1219</u>
P 2						<u>66</u>	<u>1220</u>
P 3						<u>69</u>	<u>1221</u>
P 4						<u>72</u>	<u>1222</u>
P 5						<u>75</u>	<u>1223</u>
P 6						<u>78</u>	<u>1223</u>
P 7						<u>81</u>	<u>1223</u>
P 8						<u>84</u>	<u>1223</u>
P 9						<u>87</u>	<u>1223</u>
P10						<u>90</u>	<u>1223</u>
P11						<u>93</u>	<u>1223</u>
P12							
P13							
P14							
P15							
P16							
P17							
P18							
P19							
P20							

TKT #13288

2605  
DST#2

I





WESTERN TESTING CO., INC.

FORMATION TESTING

TICKET

No 13289

OK

O. BOX 1599 PHONE (316) 262-5861

WICHITA, KANSAS 67201

Elevation 1375 Kb Formation KC Eff. Pay Ft.

District Augusty Date 8-24-82 Customer Order No.

COMPANY NAME S I M W Energy Corporation ADDRESS 4818 Knopwillmes. Tulsa Okla. 74135 3W

WELL NO Hemberger #3 COUNTY Sumner STATE Sec 29 Twp 30S Rge 3E

Invoice To #3 HEMBERGER Co. Name Address No. Copies Requested 1

Charts To Address No. Copies Requested 5

Formation Test No. 3 Interval Tested from 3410 ft. to 3432 ft. Total Depth 3432 ft.

Checker Depth 3410 ft. Size 6 3/4 in. Packer Depth ft. Size in.

Depth of Selective Zone Set

Top Recorder Depth (Inside) 3415 ft. Recorder Number 2605 Cap. 4150

Bottom Recorder Depth (Outside) 3419 ft. Recorder Number 1049 Cap. 4250

Flow Straddle Recorder Depth ft. Recorder Number Cap.

Drilling Contractor WJE #7 Drill Collar Length 300 I. D. in.

Mud Type Starch Viscosity 45 Weight Pipe Length I. D. in.

Height 9.6 Water Loss 10.4 cc. Drill Pipe Length 3085 I. D. in.

Chlorides 35,000 P.P.M. Test Tool Length 25 ft. Tool Size 5 1/2 in.

Tools: Make WTC Serial Number 495 Anchor Length 22 ft. Size 5 1/2 in.

Flow Well Flow? NO Reversed Out NO Surface Choke Size 3/4 in. Bottom Choke Size 3/4 in. Main Hole Size 7 7/8 in. Tool Joint Size 4 1/2 in.

Flow: Weak blow first flow, weak blow second flow

Recovered 180 ft. of Muddy Salt Water with Oil Spot on Top

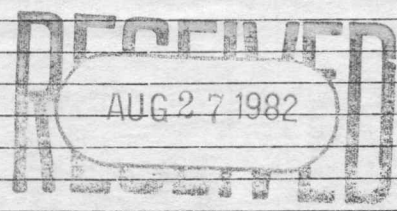
Recovered ft. of

Recovered ft. of

Recovered ft. of

Recovered ft. of

Remarks:



51,000 PPM Clouds

Time On Location A.M. P.M. Time Pick Up Tool A.M. P.M. Time Off Location A.M. P.M.

Time Set Packer(s) 7:05 A.M. P.M. Time Started Off Bottom 10:35 A.M. P.M. Maximum Temperature 120

Initial Hydrostatic Pressure (A) 172.3 P.S.I.

Initial Flow Period Minutes 30 (B) 31 P.S.I. to (C) 42 P.S.I.

Initial Closed In Period Minutes 60 (D) 12.33 P.S.I.

Normal Flow Period Minutes 36 (E) 63 P.S.I. to (F) 73 P.S.I.

Normal Closed In Period Minutes 90 (G) 12.33 P.S.I.

Normal Hydrostatic Pressure (H) 172.3 P.S.I.

COMPANY TERMS

Western Testing Co., Inc. shall not be liable for damages of any kind to the property or personnel of the one for whom a test is made or for any loss suffered or sustained directly or indirectly through the use of its equipment, of its statements or opinion concerning the results of any test. Tools lost or damaged in the hole shall be paid at cost by the party for whom the test is made.

All charges subject to 12% interest after 60 days from date of invoice. Any expense incurred for collection will be added to the original amount.

Test Approved By Signature of Customer or his authorized representative

Western Representative Kenny Kirkendall

FIELD INVOICE

Table with 2 columns: Item, Amount. Includes Open Hole Test \$600.00, Safety Joint \$65.00, TOTAL \$965.00.

WESTERN TESTING CO., INC.

Pressure Data

Date 8-24 Test Ticket No. 13289  
 Recorder No. 2605 Capacity 4150 Location 3415 Ft.  
 Clock No. --- Elevation 1375 KB Well Temperature 120 °F

Point	Pressure		Time Given	Time Computed
A Initial Hydrostatic Mud	<u>1723</u>	P.S.I.	<u>7:05 P</u>	<u>M</u>
B First Initial Flow Pressure	<u>38</u>	P.S.I.	<u>30</u> Mins.	<u>30</u> Mins.
C First Final Flow Pressure	<u>46</u>	P.S.I.	<u>60</u> Mins.	<u>60</u> Mins.
D Initial Closed-in Pressure	<u>1242</u>	P.S.I.	<u>30</u> Mins.	<u>30</u> Mins.
E Second Initial Flow Pressure	<u>78</u>	P.S.I.	<u>90</u> Mins.	<u>90</u> Mins.
F Second Final Flow Pressure	<u>89</u>	P.S.I.		
G Final Closed-in Pressure	<u>1240</u>	P.S.I.		
H Final Hydrostatic Mud	<u>1701</u>	P.S.I.		

PRESSURE BREAKDOWN

First Flow Pressure  
 Breakdown: 6 Inc.  
 of 5 mins. and a  
 final inc. of 0 Min.

Initial Shut-In  
 Breakdown: 20 Inc.  
 of 3 mins. and a  
 final inc. of 0 Min.

Second Flow Pressure  
 Breakdown: 6 Inc.  
 of 5 mins. and a  
 final inc. of 0 Min.

Final Shut-In  
 Breakdown: 30 Inc.  
 of 3 mins. and a  
 final inc. of 0 Min.

Point Mins.	Press.	Point Minutes	Press.	Point Minutes	Press.	Point Minutes	Press.
P 1 0	<u>38</u>	0	<u>46</u>	0	<u>78</u>	0	<u>89</u>
P 2 5	<u>38</u>	3	<u>137</u>	5	<u>78</u>	3	<u>243</u>
P 3 10	<u>38</u>	6	<u>339</u>	10	<u>78</u>	6	<u>441</u>
P 4 15	<u>39</u>	9	<u>610</u>	15	<u>79</u>	9	<u>736</u>
P 5 20	<u>44</u>	12	<u>802</u>	20	<u>82</u>	12	<u>948</u>
P 6 25	<u>45</u>	15	<u>1004</u>	25	<u>85</u>	15	<u>1060</u>
P 7 30	<u>46</u>	18	<u>1115</u>	30	<u>89</u>	18	<u>1141</u>
P 8 35		21	<u>1159</u>	35		21	<u>1172</u>
P 9 40		24	<u>1185</u>	40		24	<u>1188</u>
P10 45		27	<u>1204</u>	45		27	<u>1198</u>
P11 50		30	<u>1211</u>	50		30	<u>1206</u>
P12 55		33	<u>1216</u>	55		33	<u>1210</u>
P13 60		36	<u>1221</u>	60		36	<u>1214</u>
P14		39	<u>1226</u>	65		39	<u>1218</u>
P15		42	<u>1231</u>	70		42	<u>1222</u>
P16		45	<u>1235</u>	75		45	<u>1226</u>
P17		48	<u>1237</u>	80		48	<u>1228</u>
P18		51	<u>1239</u>	85		51	<u>1230</u>
P19		54	<u>1240</u>	90		54	<u>1232</u>
P20		57	<u>1241</u>			57	<u>1233</u>
		60	<u>1242</u>			60	<u>1234</u>

cont.

WESTERN TESTING CO., INC.

Pressure Data

Date \_\_\_\_\_

Test Ticket No. 13289

Recorder No. \_\_\_\_\_ Capacity \_\_\_\_\_ Location \_\_\_\_\_ Ft.

Clock No. \_\_\_\_\_ Elevation \_\_\_\_\_ Well Temperature \_\_\_\_\_ °F

Point	Pressure		Time Given	Time Computed
A Initial Hydrostatic Mud _____	P.S.I.	Open Tool	_____ M	_____
B First Initial Flow Pressure _____	P.S.I.	First Flow Pressure	_____ Mins.	_____ Mins.
C First Final Flow Pressure _____	P.S.I.	Initial Closed-in Pressure	_____ Mins.	_____ Mins.
D Initial Closed-in Pressure _____	P.S.I.	Second Flow Pressure	_____ Mins.	_____ Mins.
E Second Initial Flow Pressure _____	P.S.I.	Final Closed-in Pressure	_____ Mins.	_____ Mins.
F Second Final Flow Pressure _____	P.S.I.			
G Final Closed-in Pressure _____	P.S.I.			
H Final Hydrostatic Mud _____	P.S.I.			

PRESSURE BREAKDOWN

First Flow Pressure		Initial Shut-In		Second Flow Pressure		Final Shut-In	
Breakdown: _____ Inc.		Breakdown: _____ Inc.		Breakdown: _____ Inc.		Breakdown: _____ Inc.	
of <u>5</u> mins. and a		of <u>3</u> mins. and a		of <u>5</u> mins. and a		of <u>3</u> mins. and a	
final inc. of <u>0</u> Min.		final inc. of <u>0</u> Min.		final inc. of <u>0</u> Min.		final inc. of <u>0</u> Min.	
Point Mins.	Press.	Point Minutes	Press.	Point Minutes	Press.	Point Minutes	Press.
P 1 _____	_____	63 _____	_____	_____	_____	63 _____	1235
P 2 _____	_____	66 _____	_____	_____	_____	66 _____	1236
P 3 _____	_____	69 _____	_____	_____	_____	69 _____	1237
P 4 _____	_____	72 _____	_____	_____	_____	72 _____	1238
P 5 _____	_____	75 _____	_____	_____	_____	75 _____	1239
P 6 _____	_____	78 _____	_____	_____	_____	78 _____	1240
P 7 _____	_____	81 _____	_____	_____	_____	81 _____	⌋
P 8 _____	_____	84 _____	_____	_____	_____	84 _____	⌋
P 9 _____	_____	87 _____	_____	_____	_____	87 _____	⌋
P10 _____	_____	90 _____	_____	_____	_____	90 _____	1240
P11 _____	_____	93 _____	_____	_____	_____	93 _____	_____
P12 _____	_____	96 _____	_____	_____	_____	96 _____	_____
P13 _____	_____	99 _____	_____	_____	_____	99 _____	_____
P14 _____	_____	102 _____	_____	_____	_____	102 _____	_____
P15 _____	_____	105 _____	_____	_____	_____	105 _____	_____
P16 _____	_____	108 _____	_____	_____	_____	108 _____	_____
P17 _____	_____	111 _____	_____	_____	_____	111 _____	_____
P18 _____	_____	114 _____	_____	_____	_____	114 _____	_____
P19 _____	_____	117 _____	_____	_____	_____	117 _____	_____
P20 _____	_____	120 _____	_____	_____	_____	120 _____	_____

Company S L M W Energy Corporation Lease & Well No. #3 Hemberger  
 Elevation 1375 Kelly Bushing Formation Kansas City Effective Pay -- Ft. Ticket No. 13289  
 Date 8/24/82 Sec. 29 Twp. 30S Range 3W County Sumner State Kansas  
 Test Approved by Douglas V. Davis, Jr. Western Representative Kenny Kirkendall

Formation Test No. 3 Interval Tested from 3410 ft. to 3432 ft. Total Depth 3432 ft.  
 Packer Depth 3410 ft. Size 6 3/4 in. Packer Depth - ft. Size - in.  
 Packer Depth 3405 ft. Size 6 3/4 in. Packer Depth - ft. Size - in.

Depth of Selective Zone Set -  
 Top Recorder Depth (Inside) 3415 ft. Recorder Number 2605 Cap. 4150  
 Bottom Recorder Depth (Outside) 3419 ft. Recorder Number 1049 Cap. 4250  
 Below Straddle Recorder Depth - ft. Recorder Number - Cap. -

Drilling Contractor White & Ellis Drlg. Rig #7 Drill Collar Length 300 I. D. - in.  
 Mud Type starch Viscosity 45 Weight Pipe Length - I. D. - in.  
 Weight 9.6 Water Loss 10.4 cc. Drill Pipe Length 3085 I. D. - in.  
 Chlorides 35,000 P.P.M. Test Tool Length 25 ft. Tool Size 5 1/2 in.  
 Jars: Make WTC Serial Number 405 Anchor Length 22 ft. Size 5 1/2 in.  
 Did Well Flow? No Reversed Out No Surface Choke Size 3/4 in. Bottom Choke Size 3/4 in.  
 Main Hole Size 7 7/8 in. Tool Joint Size 4 1/2 XH in.

Blow: Weak blow initial flow period; weak blow on final flow period.

Recovered 180 ft. of muddy salt water with oil spot on top.  
 Recovered     ft. of      
 Recovered     ft. of      
 Recovered     ft. of      
 Recovered     ft. of    

Remarks:    

Time Set Packer(s) 7:05 ~~A.M.~~ P.M. Time Started Off Bottom 10:35 A.M. P.M. Maximum Temperature 120°  
 Initial Hydrostatic Pressure     (A) 1723 P.S.I.  
 Initial Flow Period     Minutes 30 (B) 38 P.S.I. to (C) 46 P.S.I.  
 Initial Closed In Period     Minutes 60 (D) 1242 P.S.I.  
 Final Flow Period     Minutes 30 (E) 78 P.S.I. to (F) 89 P.S.I.  
 Final Closed In Period     Minutes 90 (G) 1240 P.S.I.  
 Final Hydrostatic Pressure     (H) 1701 P.S.I.

**WESTERN TESTING CO., INC.**  
**Pressure Data**

Date 8/24/82 Test Ticket No. 13289  
 Recorder No. 2605 Capacity 4150 Location 3415 Ft.  
 Clock No. -- Elevation 1375 Kelly Bushing Well Temperature 120 °F

Point	Pressure		Time Given	Time Computed
A Initial Hydrostatic Mud	<u>1723</u>	P.S.I.	<u>7:05P</u>	<u>M</u>
B First Initial Flow Pressure	<u>38</u>	P.S.I.	<u>30</u>	<u>Mins. 30 Mins.</u>
C First Final Flow Pressure	<u>46</u>	P.S.I.	<u>60</u>	<u>Mins. 60 Mins.</u>
D Initial Closed-in Pressure	<u>1242</u>	P.S.I.	<u>30</u>	<u>Mins. 30 Mins.</u>
E Second Initial Flow Pressure	<u>78</u>	P.S.I.	<u>90</u>	<u>Mins. 90 Mins.</u>
F Second Final Flow Pressure	<u>89</u>	P.S.I.		
G Final Closed-in Pressure	<u>1240</u>	P.S.I.		
H Final Hydrostatic Mud	<u>1701</u>	P.S.I.		

**PRESSURE BREAKDOWN**

<b>First Flow Pressure</b> Breakdown: <u>6</u> Inc. of <u>5</u> mins. and a final inc. of <u>0</u> Min.	<b>Initial Shut-In</b> Breakdown: <u>20</u> Inc. of <u>3</u> mins. and a final inc. of <u>0</u> Min.	<b>Second Flow Pressure</b> Breakdown: <u>6</u> Inc. of <u>5</u> mins. and a final inc. of <u>0</u> Min.	<b>Final Shut-In</b> Breakdown: <u>30</u> Inc. of <u>3</u> mins. and a final inc. of <u>0</u> Min.
--	---	---	---

Point Mins.	Press.	Point Minutes	Press.	Point Minutes	Press.	Point Minutes	Press.
P 1 <u>0</u>	<u>38</u>	<u>0</u>	<u>46</u>	<u>0</u>	<u>78</u>	<u>0</u>	<u>89</u>
P 2 <u>5</u>	<u>38</u>	<u>3</u>	<u>137</u>	<u>5</u>	<u>78</u>	<u>3</u>	<u>243</u>
P 3 <u>10</u>	<u>38</u>	<u>6</u>	<u>339</u>	<u>10</u>	<u>78</u>	<u>6</u>	<u>441</u>
P 4 <u>15</u>	<u>39</u>	<u>9</u>	<u>610</u>	<u>15</u>	<u>79</u>	<u>9</u>	<u>736</u>
P 5 <u>20</u>	<u>44</u>	<u>12</u>	<u>802</u>	<u>20</u>	<u>82</u>	<u>12</u>	<u>948</u>
P 6 <u>25</u>	<u>45</u>	<u>15</u>	<u>1004</u>	<u>25</u>	<u>85</u>	<u>15</u>	<u>1060</u>
P 7 <u>30</u>	<u>46</u>	<u>18</u>	<u>1115</u>	<u>30</u>	<u>89</u>	<u>18</u>	<u>1141</u>
P 8		<u>21</u>	<u>1159</u>			<u>21</u>	<u>1172</u>
P 9		<u>24</u>	<u>1185</u>			<u>24</u>	<u>1188</u>
P10		<u>27</u>	<u>1204</u>			<u>27</u>	<u>1198</u>
P11		<u>30</u>	<u>1211</u>			<u>30</u>	<u>1206</u>
P12		<u>33</u>	<u>1216</u>			<u>33</u>	<u>1210</u>
P13		<u>36</u>	<u>1221</u>			<u>36</u>	<u>1214</u>
P14		<u>39</u>	<u>1226</u>			<u>39</u>	<u>1218</u>
P15		<u>42</u>	<u>1231</u>			<u>42</u>	<u>1222</u>
P16		<u>45</u>	<u>1235</u>			<u>45</u>	<u>1226</u>
P17		<u>48</u>	<u>1237</u>			<u>48</u>	<u>1228</u>
P18		<u>51</u>	<u>1239</u>			<u>51</u>	<u>1230</u>
P19		<u>54</u>	<u>1240</u>			<u>54</u>	<u>1232</u>
P20		<u>57</u>	<u>1241</u>			<u>57</u>	<u>1233</u>
		<u>60</u>	<u>1242</u>			<u>60</u>	<u>1234</u>

**WESTERN TESTING CO., INC.**

**Pressure Data**

Date 8/24/82

Test Ticket No. 13289

Recorder No. 2605 Capacity 4150 Location 3415 Ft.

Clock No. -- Elevation 1375 Kelly Bushing Well Temperature 120 °F

Point	Pressure			Time Given	Time Computed	
		P.S.I.		7:05P	M	
A Initial Hydrostatic Mud	<u>1723</u>	P.S.I.	Open Tool			
B First Initial Flow Pressure	<u>38</u>	P.S.I.	First Flow Pressure	<u>30</u>	Mins.	<u>30</u> Mins.
C First Final Flow Pressure	<u>46</u>	P.S.I.	Initial Closed-in Pressure	<u>60</u>	Mins.	<u>60</u> Mins.
D Initial Closed-in Pressure	<u>1242</u>	P.S.I.	Second Flow Pressure	<u>30</u>	Mins.	<u>30</u> Mins.
E Second Initial Flow Pressure	<u>78</u>	P.S.I.	Final Closed-in Pressure	<u>90</u>	Mins.	<u>90</u> Mins.
F Second Final Flow Pressure	<u>89</u>	P.S.I.				
G Final Closed-in Pressure	<u>1240</u>	P.S.I.				
H Final Hydrostatic Mud	<u>1701</u>	P.S.I.				

**PRESSURE BREAKDOWN**

**First Flow Pressure**  
Breakdown: 6 Inc.  
of 5 mins. and a  
final inc. of 0 Min.

**Initial Shut-In**  
Breakdown: 20 Inc.  
of 3 mins. and a  
final inc. of 0 Min.

**Second Flow Pressure**  
Breakdown: 6 Inc.  
of 5 mins. and a  
final inc. of 0 Min.

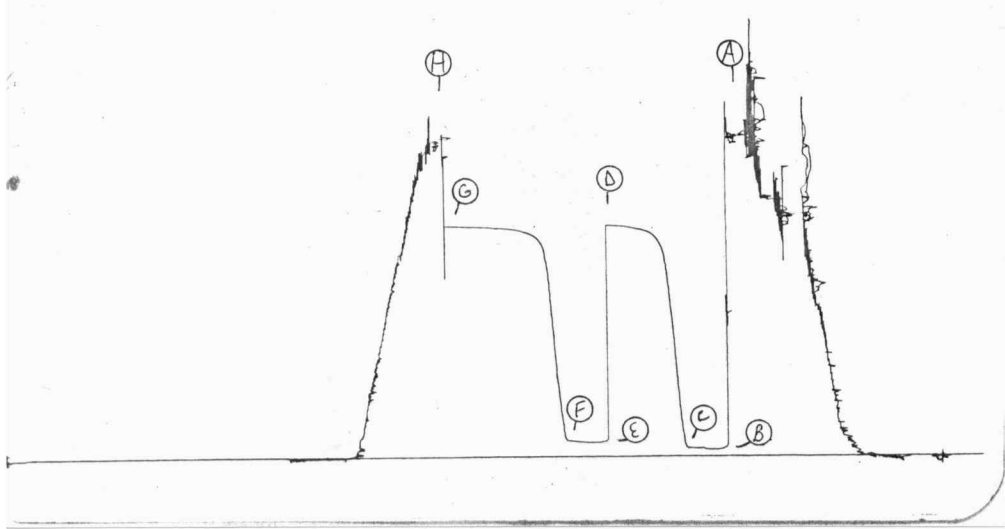
**Final Shut-In**  
Breakdown: 30 Inc.  
of 3 mins. and a  
final inc. of 0 Min.

Point Mins.	Press.	Point Minutes	Press.	Point Minutes	Press.	Point Minutes	Press.
P 1						<u>65</u>	<u>1255</u>
P 2						<u>66</u>	<u>1236</u>
P 3						<u>69</u>	<u>1237</u>
P 4						<u>72</u>	<u>1238</u>
P 5						<u>75</u>	<u>1239</u>
P 6						<u>78</u>	<u>1240</u>
P 7						<u>81</u>	<u>1240</u>
P 8						<u>84</u>	<u>1240</u>
P 9						<u>87</u>	<u>1240</u>
P10						<u>90</u>	<u>1240</u>
P11							
P12							
P13							
P14							
P15							
P16							
P17							
P18							
P19							
P20							

TKT # 13289

DST#3  
2605

I





WESTERN TESTING CO., INC.

FORMATION TESTING

TICKET

NO 15718

OK

P. O. BOX 1599 PHONE (316) 262-5861 WICHITA, KANSAS 67201

Elevation 1375 K.B 1369 C.L Formation SIMPSON Eff. Pay Ft.

District DODGE CITY Date 8/28/82 Customer Order No.

COMPANY NAME SLMW ENERGY Corp.

ADDRESS 4818 Knoxville Ave. D. TULSA OKLA 74135

LEASE AND WELL NO. HEMBERGER #3 COUNTY SUMNER STATE KS Sec. 29 Twp. 30S Rge. 3W

Mail Invoice To SAME Co. Name Address No. Copies Requested 5

Mail Charts To SAME Address No. Copies Requested 5

Formation Test No. 4 Interval Tested From 4316 ft. to 4329 ft. Total Depth 4329 ft.

Packer Depth 4311 ft. Size 6 3/4 in. Packer Depth 4316 ft. Size 6 3/4 in.

Packer Depth ft. Size in. Packer Depth ft. Size in.

Depth of Selective Zone Set

Top Recorder Depth (Inside) 4318 ft. Recorder Number 10980 Cap. 4200

Bottom Recorder Depth (Outside) 4322 ft. Recorder Number 6233 Cap. 4000

Below Straddle Recorder Depth ft. Recorder Number Cap.

Drilling Contractor WFE R.g #7 Drill Collar Length 305' I. D. 2.2 in.

Mud Type SALT CLAY - STARKIN Viscosity 57 Weight Pipe Length 3982' I. D. 3.8 in.

Weight 9.6 Water Loss 8.0 cc. Drill Pipe Length 29' ft. Tool Size 4.5 in.

Chlorides 21,000 P.P.M. Test Tool Length 13' ft. Size 5.5 in.

Jars: Make Bower Serial Number 414 Anchor Length 3/4 in. Bottom Choke Size 3/4 in.

Did Well Flow? NO Reversed Out NO Surface Choke Size 7 1/8 in. Tool Joint Size 4.5 in.

Blow: 1ST - WEAR BLOW THROUGHOUT - JUST OFF TOP OF WATER

2ND - WEAR BLOW THROUGHOUT - FEW BUBBLES

Recovered 60' ft. of C.I.P.

Recovered 62' ft. of VSOC+CCM 2900 oil 1190 GAS 8790 m

Recovered ft. of

Recovered 62' ft. of TOTAL FLUID NO WATER

Recovered ft. of

Remarks: READ BOTTOM CHART AUG 30 1982

Time On Location 5:00 A.M. Time Pick Up Tool 6:45 A.M. Time Off Location A.M.

Time Set Packer(s) 8:30 A.M. Time Started Off Bottom 11:30 P.M. Maximum Temperature 115°

Initial Hydrostatic Pressure (A) 2247 P.S.I.

Initial Flow Period (B) 30 Minutes 81 P.S.I. to (C) 81 P.S.I.

Initial Closed In Period (D) 60 Minutes 1303 P.S.I.

Final Flow Period (E) 30 Minutes 91 P.S.I. to (F) 91 P.S.I.

Final Closed In Period (G) 60 Minutes 1283 P.S.I.

Final Hydrostatic Pressure (H) 2217 P.S.I.

COMPANY TERMS

Western Testing Co., Inc. shall not be liable for damages of any kind to the property or personnel of the one for whom a test is made or for any loss suffered or sustained directly or indirectly through the use of its equipment, of its statements or opinion concerning the results of any test. Tools lost or damaged in the hole shall be paid at cost by the party for whom the test is made.

All charges subject to 12% interest after 60 days from date of invoice. Any expense incurred for collection will be added to the original amount.

Test Approved By: [Signature] Signature of Customer or his authorized representative

Western Representative: [Signature] Daniel Clapham

FIELD INVOICE

Table with 2 columns: Item and Price. Items include Open Hole Test (\$675.00), Misrun, Straddle Test, Jars (\$300.00), Selective Zone, Safety Joint (\$65.00), Standby, Evaluation, Extra Packer, Circ. Sub., Mileage n/k, Fluid Sampler, Extra Charts, Insurance, Telecopier, and TOTAL (\$1040.00).

**WESTERN TESTING CO., INC.**  
Pressure Data

Date 8-28 Test Ticket No. 15718  
 Recorder No. 6233 Capacity 4000 Location 4322 Ft.  
 Clock No. --- Elevation 1375 KB Well Temperature 115 °F

Point	Pressure		Time Given	Time Computed
A Initial Hydrostatic Mud	<u>2253</u>	P.S.I.	<u>8:30 A</u>	<u>M</u>
B First Initial Flow Pressure	<u>74</u>	P.S.I.	<u>30</u>	<u>30</u> Mins.
C First Final Flow Pressure	<u>74</u>	P.S.I.	<u>60</u>	<u>57</u> Mins.
D Initial Closed-in Pressure	<u>1312</u>	P.S.I.	<u>30</u>	<u>30</u> Mins.
E Second Initial Flow Pressure	<u>95</u>	P.S.I.	<u>60</u>	<u>57</u> Mins.
F Second Final Flow Pressure	<u>95</u>	P.S.I.		
G Final Closed-in Pressure	<u>1290</u>	P.S.I.		
H Final Hydrostatic Mud	<u>2213</u>	P.S.I.		

**PRESSURE BREAKDOWN**

<b>First Flow Pressure</b> Breakdown: <u>6</u> Inc. of <u>5</u> mins. and a final inc. of <u>0</u> Min.	<b>Initial Shut-In</b> Breakdown: <u>19</u> Inc. of <u>3</u> mins. and a final inc. of <u>0</u> Min.	<b>Second Flow Pressure</b> Breakdown: <u>6</u> Inc. of <u>5</u> mins. and a final inc. of <u>0</u> Min.	<b>Final Shut-In</b> Breakdown: <u>19</u> Inc. of <u>3</u> mins. and a final inc. of <u>0</u> Min.
--	---	---	---

Point Mins.	Press.	Point Minutes	Press.	Point Minutes	Press.	Point Minutes	Press.
P 1 0	<u>74</u>	0	<u>74</u>	0	<u>95</u>	0	<u>95</u>
P 2 5	}	3	<u>74</u>	5	}	3	<u>95</u>
P 3 10		6	<u>85</u>	10		6	<u>101</u>
P 4 15		9	<u>140</u>	15		9	<u>114</u>
P 5 20		12	<u>388</u>	20		12	<u>175</u>
P 6 25		15	<u>809</u>	25		15	<u>283</u>
P 7 30	<u>74</u>	18	<u>1067</u>	30	<u>95</u>	18	<u>457</u>
P 8 35		21	<u>1160</u>	35		21	<u>741</u>
P 9 40		24	<u>1203</u>	40		24	<u>968</u>
P10 45		27	<u>1229</u>	45		27	<u>1103</u>
P11 50		30	<u>1248</u>	50		30	<u>1177</u>
P12 55		33	<u>1260</u>	55		33	<u>1207</u>
P13 60		36	<u>1266</u>	60		36	<u>1233</u>
P14		39	<u>1276</u>	65		39	<u>1246</u>
P15		42	<u>1284</u>	70		42	<u>1260</u>
P16		45	<u>1292</u>	75		45	<u>1267</u>
P17		48	<u>1297</u>	80		48	<u>1274</u>
P18		51	<u>1302</u>	85		51	<u>1280</u>
P19		54	<u>1307</u>	90		54	<u>1285</u>
P20		57	<u>1312</u>			57	<u>1290</u>

Company S L M W Energy Corporation Lease & Well No. #3 Hemberger  
 Elevation 1375 Kelly Bushing Simpson Formation Simpson Effective Pay -- Ft. Ticket No. 15718  
 Date 8/28/82 Sec. 29 Twp. 30S Range 3W County Sumner State Kansas  
 Test Approved by Douglas V. Davis, Jr. Western Representative Darrell Claphan

Formation Test No. 4 Interval Tested from 4316 ft. to 4329 ft. Total Depth 4329 ft.  
 Packer Depth 4311 ft. Size 6 3/4 in. Packer Depth 4316 ft. Size 6 3/4 in.  
 Packer Depth - ft. Size - in. Packer Depth - ft. Size - in.  
 Depth of Selective Zone Set -

Top Recorder Depth (Inside) 4318 ft. Recorder Number 10980 Cap. 4200  
 Bottom Recorder Depth (Outside) 4322 ft. Recorder Number 6233 Cap. 4000  
 Below Straddle Recorder Depth -- ft. Recorder Number - Cap. -

Drilling Contractor White & Ellis Drlg. Rig #7 Drill Collar Length 305 I. D. 2.2 in.

Mud Type salt-clay-starch viscosity 57 Weight Pipe Length - I. D. - in.

Weight 9.6 Water Loss 8.0 cc. Drill Pipe Length 3982 I. D. 3.8 in.

Chlorides 21,000 P.P.M. Test Tool Length 29 ft. Tool Size 4.5 in.

Jars: Make WTC Serial Number 414 Anchor Length 13 ft. Size 5.5 in.

Did Well Flow? No Reversed Out No Surface Choke Size 3/4 in. Bottom Choke Size 3/4 in.

Main Hole Size 7 7/8 in. Tool Joint Size 4.5 in.

Blow: Initial flow period weak blow throughout; just off top of water

Weak blow throughout finalflow period; few bubbles.

Recovered 60 ft. of gas in pipe

Recovered 62 ft. of very slightly oil cut and gas cut mud 2% oil; 11% gas; 87% mud

Recovered - ft. of -

Recovered - ft. of NO WATER

Recovered - ft. of -

Recovered - ft. of -

Recovered - ft. of -

Remarks: Read Bottom Chart

Read Bottom Chart

Time Set Packer(s) 8:30 A.M. Time Started Off Bottom 11:30 A.M. Maximum Temperature 115°

Initial Hydrostatic Pressure 2553 P.S.I.

Initial Flow Period 30 Minutes (B) 74 P.S.I. to (C) 74 P.S.I.

Initial Closed In Period 57 Minutes (D) 1312 P.S.I.

Final Flow Period 30 Minutes (E) 95 P.S.I. to (F) 95 P.S.I.

Final Closed In Period 57 Minutes (G) 1290 P.S.I.

Final Hydrostatic Pressure 2213 P.S.I.

Final Hydrostatic Pressure 2213 P.S.I.

Final Hydrostatic Pressure 2213 P.S.I.

**WESTERN TESTING CO., INC.**  
**Pressure Data**

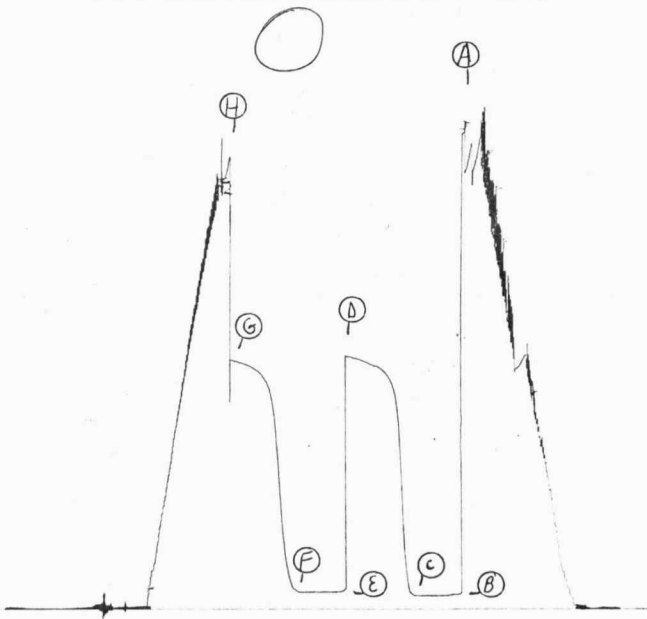
Date 8/28/82 Recorder No. 6233 Capacity 4000 Test Ticket No. 15718  
 Clock No. --- Elevation 1375 Kelly Bushing Location 4322 Ft. 115 °F

Point	Pressure		Time Given	Time Computed
A Initial Hydrostatic Mud	<u>2253</u> P.S.I.	Open Tool	<u>8:30A</u> M	
B First Initial Flow Pressure	<u>74</u> P.S.I.	First Flow Pressure	<u>30</u> Mins.	<u>30</u> Mins.
C First Final Flow Pressure	<u>74</u> P.S.I.	Initial Closed-in Pressure	<u>60</u> Mins.	<u>57</u> Mins.
D Initial Closed-in Pressure	<u>1312</u> P.S.I.	Second Flow Pressure	<u>30</u> Mins.	<u>30</u> Mins.
E Second Initial Flow Pressure	<u>95</u> P.S.I.	Final Closed-in Pressure	<u>60</u> Mins.	<u>57</u> Mins.
F Second Final Flow Pressure	<u>95</u> P.S.I.			
G Final Closed-in Pressure	<u>1290</u> P.S.I.			
H Final Hydrostatic Mud	<u>2213</u> P.S.I.			

**PRESSURE BREAKDOWN**

Point Mins.	First Flow Pressure Breakdown: <u>6</u> Inc. of <u>5</u> mins. and a final inc. of <u>0</u> Min.		Initial Shut-In Breakdown: <u>19</u> Inc. of <u>3</u> mins. and a final inc. of <u>0</u> Min.		Second Flow Pressure Breakdown: <u>6</u> Inc. of <u>5</u> mins. and a final inc. of <u>0</u> Min.		Final Shut-In Breakdown: <u>19</u> Inc. of <u>3</u> mins. and a final inc. of <u>0</u> Min.	
	Press.	Point Minutes	Press.	Point Minutes	Press.	Point Minutes	Press.	Point Minutes
P 1	<u>74</u>	<u>0</u>	<u>74</u>	<u>0</u>	<u>95</u>	<u>0</u>	<u>95</u>	<u>0</u>
P 2	<u>74</u>	<u>5</u>	<u>74</u>	<u>3</u>	<u>95</u>	<u>5</u>	<u>95</u>	<u>3</u>
P 3	<u>74</u>	<u>10</u>	<u>85</u>	<u>6</u>	<u>95</u>	<u>10</u>	<u>101</u>	<u>6</u>
P 4	<u>74</u>	<u>15</u>	<u>140</u>	<u>9</u>	<u>95</u>	<u>15</u>	<u>114</u>	<u>9</u>
P 5	<u>74</u>	<u>20</u>	<u>388</u>	<u>12</u>	<u>95</u>	<u>20</u>	<u>175</u>	<u>12</u>
P 6	<u>74</u>	<u>25</u>	<u>809</u>	<u>15</u>	<u>95</u>	<u>25</u>	<u>283</u>	<u>15</u>
P 7	<u>74</u>	<u>30</u>	<u>1067</u>	<u>18</u>	<u>95</u>	<u>30</u>	<u>457</u>	<u>18</u>
P 8			<u>1160</u>	<u>21</u>			<u>741</u>	<u>21</u>
P 9			<u>1203</u>	<u>24</u>			<u>968</u>	<u>24</u>
P10			<u>1229</u>	<u>27</u>			<u>1103</u>	<u>27</u>
P11			<u>1248</u>	<u>30</u>			<u>1177</u>	<u>30</u>
P12			<u>1260</u>	<u>33</u>			<u>1207</u>	<u>33</u>
P13			<u>1266</u>	<u>36</u>			<u>1233</u>	<u>36</u>
P14			<u>1276</u>	<u>39</u>			<u>1246</u>	<u>39</u>
P15			<u>1284</u>	<u>42</u>			<u>1260</u>	<u>42</u>
P16			<u>1292</u>	<u>45</u>			<u>1267</u>	<u>45</u>
P17			<u>1297</u>	<u>48</u>			<u>1274</u>	<u>48</u>
P18			<u>1302</u>	<u>51</u>			<u>1280</u>	<u>51</u>
P19			<u>1307</u>	<u>54</u>			<u>1285</u>	<u>54</u>
P20			<u>1312</u>	<u>57</u>			<u>1290</u>	<u>57</u>

TKT # 15718



6233 #4



WESTERN TESTING CO., INC.
FORMATION TESTING

OK

TICKET No 15719

P. O. BOX 1599 WICHITA, KANSAS 67201
PHONE (316) 262-5861

Elevation 1375 K.B Formation SEMP. Eff. Pay Ft.

District DOGUE CITY Date 8/28/82 Customer Order No.

COMPANY NAME SLMW ENERGY CO.

ADDRESS 4818 S KNOXVILLE TULSA, OKLA. 74135

LEASE AND WELL NO. HEMBERGER #3 COUNTY SUMNER STATE KS Sec. 29 Twp. 30S Rge. 3W

Mail Invoice To SAME Co. Name SAME Address No. Copies Requested 5

Mail Charts To SAME Address No. Copies Requested 5

Formation Test No. 5 Interval Tested From 4318 ft. to 4334 ft. Total Depth 4334 ft.

Packer Depth 4313 ft. Size 6 3/4 in. Packer Depth 4318 ft. Size 6 3/4 in.

Packer Depth ft. Size in. Packer Depth ft. Size in.

Depth of Selective Zone Set

Top Recorder Depth (Inside) 4320 ft. Recorder Number 10980 Cap. 4200

Bottom Recorder Depth (Outside) 4324 ft. Recorder Number 6233 Cap. 4000

Below Straddle Recorder Depth ft. Recorder Number Cap.

Drilling Contractor W+E DRIL. Co. #7 Drill Collar Length 305' I. D. 2.2 in.

Mud Type SALT CLAY - STARCH Viscosity 59 Weight Pipe Length I. D. in.

Weight 9. Water Loss 12.0 cc. Drill Pipe Length 3984' I. D. 3.8 in.

Chlorides 20,000 P.P.M. Test Tool Length 29' ft. Tool Size 4.5 in.

Jars: Make BOWEN Serial Number 414 Anchor Length 16' ft. Size 5.5 in.

Did Well Flow? NO Reversed Out NO Surface Choke Size 3/4 in. Bottom Choke Size 3/4 in.

Main Hole Size 7 7/8 in. Tool Joint Size 4.5 in.

Blow: 1ST- WEAK BLOW DIED IN 25 MEN. 2ND- WEAK BLOW THROUGHOUT '18"

Recovered 110' ft. of G.I.P. Recovered 70' ft. of SLO & GCM 2900il 1590 GAS 83% mud

Recovered 70' ft. of TOTAL NOWATER

Remarks:

READ CHART # 6233

RECEIVED AUG 30 1982

Time On Location 3:00 A.M. P.M. Time Pick Up Tool 7:30 A.M. P.M. Time Off Location A.M. P.M.

Time Set Packer(s) 9:45 A.M. P.M. Time Started Off Bottom 12:45 A.M. P.M. Maximum Temperature 115°

Initial Hydrostatic Pressure (A) 2237 P.S.I.

Initial Flow Period Minutes 30 (B) 81 P.S.I. to (C) 81 P.S.I.

Initial Closed In Period Minutes 60 (D) 1303 P.S.I.

Final Flow Period Minutes 30 (E) 91 P.S.I. to (F) 91 P.S.I.

Final Closed In Period Minutes 60 (G) 1293 P.S.I.

Final Hydrostatic Pressure (H) 2207 P.S.I.

COMPANY TERMS

Western Testing Co., Inc. shall not be liable for damages of any kind to the property or personnel of the one for whom a test is made or for any loss suffered or sustained directly or indirectly through the use of its equipment, of its statements or opinion concerning the results of any test. Tools lost or damaged in the hole shall be paid at cost by the party for whom the test is made. All charges subject to 12% interest after 60 days from date of invoice. Any expense incurred for collection will be added to the original amount.

Test Approved By [Signature] Signature of Customer or his authorized representative Western Representative [Signature] Danell Clapham

FIELD INVOICE

Table with 2 columns: Item and Price. Items include Open Hole Test (\$675), Misrun, Straddle Test, Jars (\$300), Selective Zone (\$65), Safety Joint, Standby, Evaluation, Extra Packer, Circ. Sub., Mileage (\$10), Fluid Sampler, Extra Charts, Insurance, Telecopier, and TOTAL (\$1040).

WESTERN TESTING CO., INC.

Pressure Data

Date 8-28 Recorder No. 6233 Capacity 4000 Test Ticket No. 15719  
 Clock No. --- Elevation 1375 KB Location 4324 Ft. Well Temperature 115 °F

Point	Pressure		Time Given	Time Computed
A Initial Hydrostatic Mud	<u>2239</u>	P.S.I.	<u>9:45 P</u>	<u>M</u>
B First Initial Flow Pressure	<u>73</u>	P.S.I.	<u>30</u> Mins.	<u>30</u> Mins.
C First Final Flow Pressure	<u>75</u>	P.S.I.	<u>60</u> Mins.	<u>54</u> Mins.
D Initial Closed-in Pressure	<u>1317</u>	P.S.I.	<u>30</u> Mins.	<u>30</u> Mins.
E Second Initial Flow Pressure	<u>92</u>	P.S.I.	<u>60</u> Mins.	<u>57</u> Mins.
F Second Final Flow Pressure	<u>92</u>	P.S.I.		
G Final Closed-in Pressure	<u>1297</u>	P.S.I.		
H Final Hydrostatic Mud	<u>2217</u>	P.S.I.		

PRESSURE BREAKDOWN

First Flow Pressure		Initial Shut-In		Second Flow Pressure		Final Shut-In	
Breakdown: <u>6</u> Inc.		Breakdown: <u>18</u> Inc.		Breakdown: <u>6</u> Inc.		Breakdown: <u>19</u> Inc.	
of <u>5</u> mins. and a		of <u>3</u> mins. and a		of <u>5</u> mins. and a		of <u>3</u> mins. and a	
final inc. of <u>0</u> Min.		final inc. of <u>0</u> Min.		final inc. of <u>0</u> Min.		final inc. of <u>0</u> Min.	
Point Mins.	Press.	Point Minutes	Press.	Point Minutes	Press.	Point Minutes	Press.
P 1	<u>0</u>	<u>0</u>	<u>73</u>	<u>0</u>	<u>92</u>	<u>0</u>	<u>92</u>
P 2	<u>5</u>	<u>3</u>	<u>79</u>	<u>5</u>	<u>(</u>	<u>3</u>	<u>93</u>
P 3	<u>10</u>	<u>6</u>	<u>93</u>	<u>10</u>	<u>(</u>	<u>6</u>	<u>94</u>
P 4	<u>15</u>	<u>9</u>	<u>167</u>	<u>15</u>	<u>(</u>	<u>9</u>	<u>110</u>
P 5	<u>20</u>	<u>12</u>	<u>350</u>	<u>20</u>	<u>(</u>	<u>12</u>	<u>134</u>
P 6	<u>25</u>	<u>15</u>	<u>691</u>	<u>25</u>	<u>(</u>	<u>15</u>	<u>215</u>
P 7	<u>30</u>	<u>18</u>	<u>1038</u>	<u>30</u>	<u>92</u>	<u>18</u>	<u>368</u>
P 8	<u>35</u>	<u>21</u>	<u>1154</u>	<u>35</u>	<u>(</u>	<u>21</u>	<u>641</u>
P 9	<u>40</u>	<u>24</u>	<u>1204</u>	<u>40</u>	<u>(</u>	<u>24</u>	<u>984</u>
P 10	<u>45</u>	<u>27</u>	<u>1240</u>	<u>45</u>	<u>(</u>	<u>27</u>	<u>1123</u>
P 11	<u>50</u>	<u>30</u>	<u>1256</u>	<u>50</u>	<u>(</u>	<u>30</u>	<u>1184</u>
P 12	<u>55</u>	<u>33</u>	<u>1266</u>	<u>55</u>	<u>(</u>	<u>33</u>	<u>1214</u>
P 13	<u>60</u>	<u>36</u>	<u>1276</u>	<u>60</u>	<u>(</u>	<u>36</u>	<u>1234</u>
P 14		<u>39</u>	<u>1286</u>	<u>65</u>	<u>(</u>	<u>39</u>	<u>1252</u>
P 15		<u>42</u>	<u>1296</u>	<u>70</u>	<u>(</u>	<u>42</u>	<u>1265</u>
P 16		<u>45</u>	<u>1306</u>	<u>75</u>	<u>(</u>	<u>45</u>	<u>1272</u>
P 17		<u>48</u>	<u>1310</u>	<u>80</u>	<u>(</u>	<u>48</u>	<u>1279</u>
P 18		<u>51</u>	<u>1314</u>	<u>85</u>	<u>(</u>	<u>51</u>	<u>1285</u>
P 19		<u>54</u>	<u>1317</u>	<u>90</u>	<u>(</u>	<u>54</u>	<u>1291</u>
P 20		<u>57</u>			<u>(</u>	<u>57</u>	<u>1297</u>
		<u>60</u>			<u>(</u>	<u>60</u>	

Company S L M W Energy Corporation Lease & Well No. #3 Hemberger  
 Elevation 1375 Kelly Bushing Formation Simpson Effective Pay -- Ft. Ticket No. 15719  
 Date 8/28/82 Sec. 29 Twp. 30S Range 3W County Sumner State Kansas  
 Test Approved by Douglas V. Davis, Jr. Western Representative Darrell Claphan

Formation Test No. 5 Interval Tested from 4318 ft. to 4334 ft. Total Depth 4334 ft.  
 Packer Depth 4313 ft. Size 6 3/4 in. Packer Depth 4318 ft. Size 6 3/4 in.  
 Packer Depth - ft. Size - in. Packer Depth - ft. Size - in.  
 Depth of Selective Zone Set -

Top Recorder Depth (Inside) 4320 ft. Recorder Number 10980 Cap. 4200  
 Bottom Recorder Depth (Outside) 4324 ft. Recorder Number 6233 Cap. 4000  
 Below Straddle Recorder Depth - - ft. Recorder Number - Cap. -

Drilling Contractor White & Ellis Drlg. Rig #7 Drill Collar Length 305 I. D. 2.2 in.  
 Mud Type salt-clay-starch Viscosity 59 Weight Pipe Length - I. D. - in.  
 Weight 9 Water Loss 12.0 cc. Drill Pipe Length 3984 I. D. 3.8 in.  
 Chlorides 20,000 P.P.M. Test Tool Length 29 ft. Tool Size 4.5 in.  
 Jars: Make WTC Serial Number 414 Anchor Length 16 ft. Size 5.5 in.  
 Did Well Flow? No Reversed Out No Surface Choke Size 3/4 in. Bottom Choke Size 3/4 in.  
 Main Hole Size 7 7/8 in. Tool Joint Size 4.5 in.

Blow: Weak blow died in twenty-five minutes on initial flow period. Weak blow throughout final flow period - one eighth inch blow.

Recovered 110 ft. of gas in pipe  
 Recovered 70 ft. of slightly oil and gas cut mud 2% oil;15% gas;83% mud  
 Recovered - ft. of NO WATER  
 Recovered - ft. of -  
 Recovered - ft. of -

Remarks: READ CHART #6233

Time Set Packer(s) 9:45 ~~A.M.~~ P.M. Time Started Off Bottom 12:45 ~~A.M.~~ P.M. Maximum Temperature 115°  
 Initial Hydrostatic Pressure ..... (A) 2239 P.S.I.  
 Initial Flow Period ..... Minutes 30 (B) 73 P.S.I. to (C) 75 P.S.I.  
 Initial Closed In Period ..... Minutes 54 (D) 1317 P.S.I.  
 Final Flow Period ..... Minutes 30 (E) 92 P.S.I. to (F) 92 P.S.I.  
 Final Closed In Period ..... Minutes 57 (G) 1297 P.S.I.  
 Final Hydrostatic Pressure ..... (H) 2217 P.S.I.

# WESTERN TESTING CO., INC.

## Pressure Data

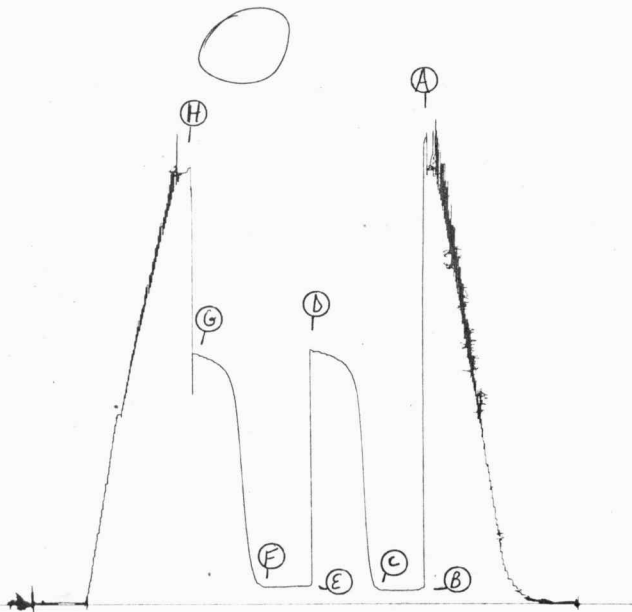
Date 8/28/82 Test Ticket No. 15719  
 Recorder No. 6233 Capacity 4000 Location 4324 Ft.  
 Clock No. -- Elevation 1375 Kelly Bushing Well Temperature 115 °F

Point	Pressure		Time Given	Time Computed
A. Initial Hydrostatic Mud	2239	P.S.I.	9:45P	M
B. First Initial Flow Pressure	73	P.S.I.	30	Mins. 30 Mins.
C. First Final Flow Pressure	75	P.S.I.	60	Mins. 54 Mins.
D. Initial Closed-in Pressure	1317	P.S.I.	30	Mins. 30 Mins.
E. Second Initial Flow Pressure	92	P.S.I.	60	Mins. 57 Mins.
F. Second Final Flow Pressure	92	P.S.I.		
G. Final Closed-in Pressure	1297	P.S.I.		
H. Final Hydrostatic Mud	2217	P.S.I.		

### PRESSURE BREAKDOWN

First Flow Pressure		Initial Shut-In		Second Flow Pressure		Final Shut-In	
Breakdown: <u>6</u> Inc.		Breakdown: <u>18</u> Inc.		Breakdown: <u>6</u> Inc.		Breakdown: <u>19</u> Inc.	
of <u>5</u> mins. and a		of <u>3</u> mins. and a		of <u>5</u> mins. and a		of <u>3</u> mins. and a	
final inc. of <u>0</u> Min.		final inc. of <u>0</u> Min.		final inc. of <u>0</u> Min.		final inc. of <u>0</u> Min.	
Point Mins.	Press.	Point Minutes	Press.	Point Minutes	Press.	Point Minutes	Press.
P 1	0	73	0	75	0	92	92
P 2	5	73	3	79	5	92	93
P 3	10	73	6	93	10	92	94
P 4	15	73	9	167	15	92	110
P 5	20	73	12	350	20	92	134
P 6	25	74	15	691	25	92	215
P 7	30	75	18	1038	30	92	368
P 8			21	1154			641
P 9			24	1204			984
P10			27	1240			1123
P11			30	1256			1184
P12			33	1266			1214
P13			36	1276			1234
P14			39	1286			1252
P15			42	1296			1265
P16			45	1306			1272
P17			48	1310			1279
P18			51	1314			1285
P19			54	1317			1291
P20						57	1297

TKT #15719



6233