



2E Thompson

Amoco Production Company (USA)

May 2, 1983

Mr. K. David Newell
Kansas Geological Survey
1930 Avenue A, Campus West
University of Kansas
Lawrence, Kansas

Dear David:

Enclosed are the enlarged copies of the gas chromatograms from the first shipment of cores. I hope they meet your satisfaction. I have also requested that the Research Center provide the enlarged copies in all subsequent reports.

We have received the second shipment of cores back from the Research Center. After taking a look to make sure the shipment is complete, we will send them back to your facility. Thank you for the extension. The data from the second batch of cores should also be heading your way very soon.

Please call if we may be of further assistance.

Sincerely,

Chuck Sawyer

Chuck Sawyer

KCS:yo

No. 2E THOMPSON

S-678 TX

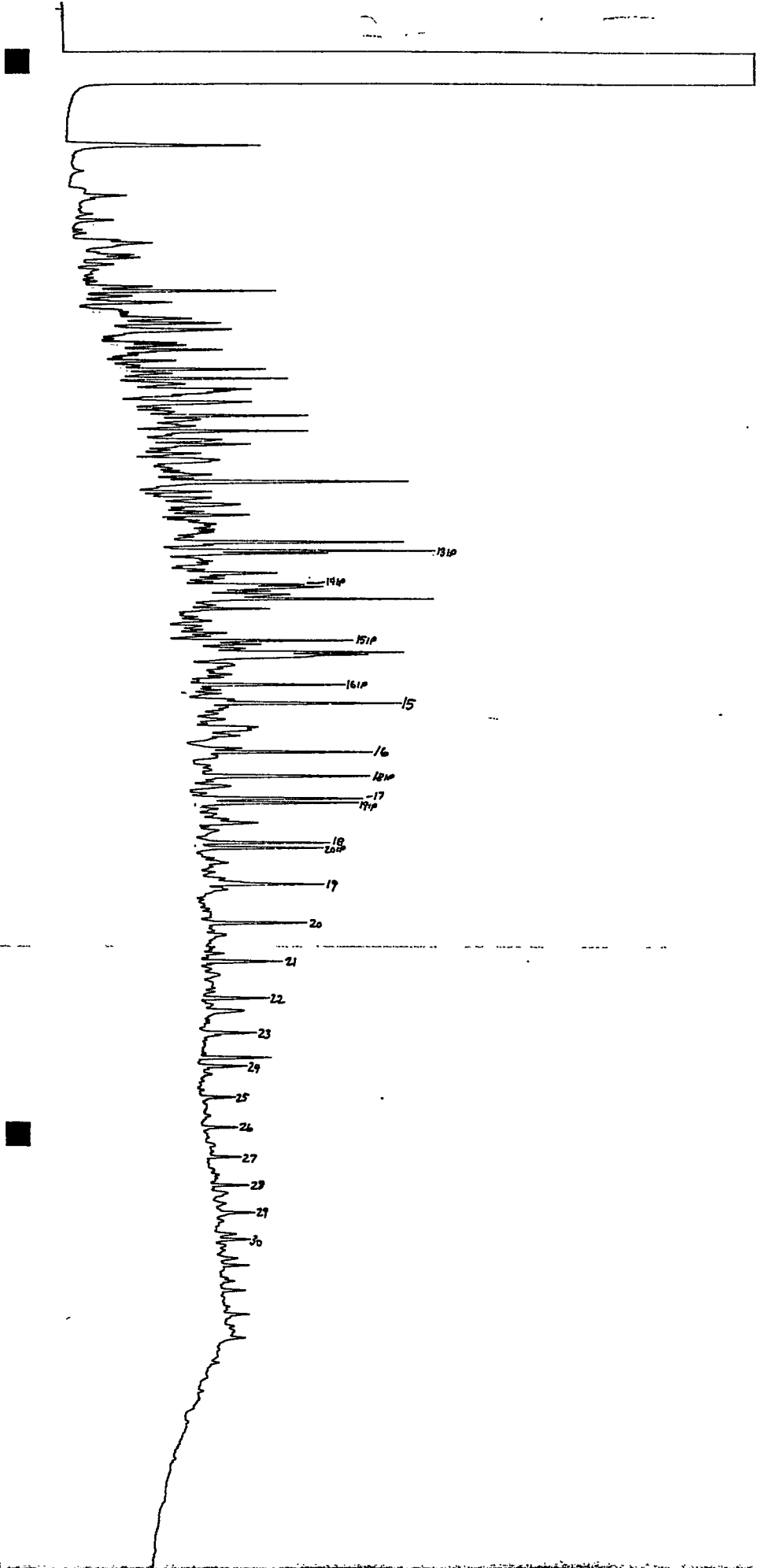
11-4-82

2128

188

I=12
RT=128
RUN

INJECT TIME 02:48:03



189

No. 2E Thompson

5679x

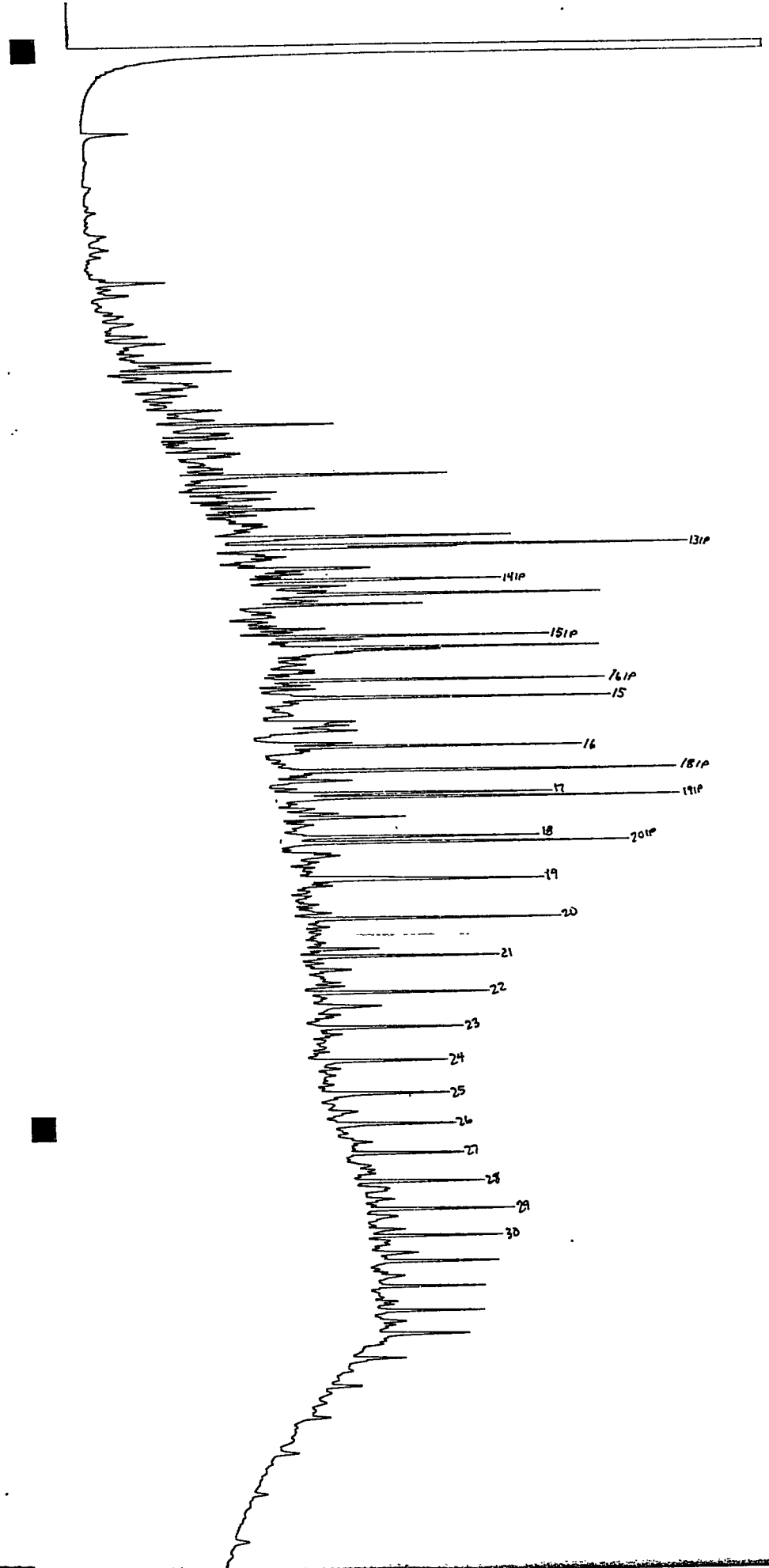
11-9-82

xL4

79

SI=2
RT=64
RUN

INJECT TIME 04:55:23



80