

24-30-34w

15-081-21360

RELEASED

APR 25 2002

FROM CONFIDENTIAL

ORIGINAL KCC

Garner 1-1624
Harris Oil & Gas
24-30s-34w

WELL NAME

Garner #1-1624 MAR 27 2002

COMPANY

Harris Oil & Gas

CONFIDENTIAL

LOCATION

24-30-34

RECEIVED
STATE CORPORATION COM

Wichita, Kansas

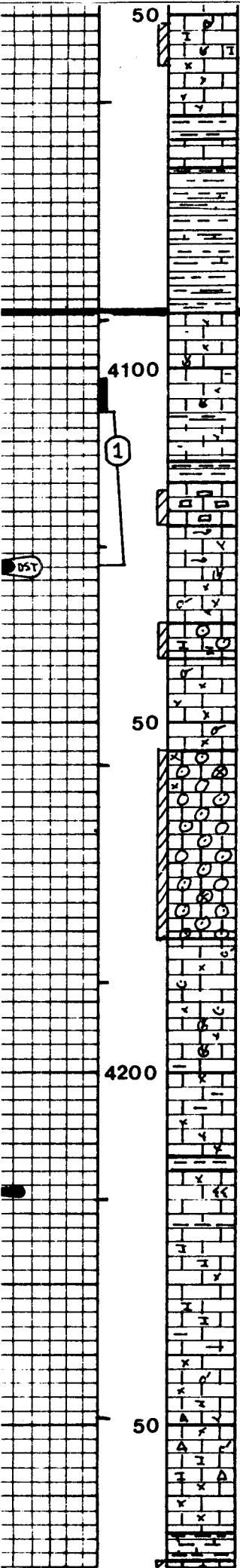
DATE

12/18/00

APR 22
CONSERVATION DIV.
Wichita, Kansas

CONFIDENTIAL

ACO-1 COPY



SH - MED/DK GRAY. HI LMS IN PART.

LS - LT GRAY/TAN. SING / HOT. MICRO-XLN. XLN POR. & B-XLN. SOME BRGIL. & FOS. SIL FRALS. FIRM. NO ITR VIS POR.

SH - MED GRDY. SOFT.

LS - TAN. SING. MICRO-XLN. XLN + SUCCROSIK POR. PARTLY FRIABLE. & S; CAST CRINOID RE. PLACEMENT. FRIGD VIS POR. GOOD ODOR. UNIFORM YEL FLUOR. N/C, NO FREG OIL-GAS. NOT STAIN. W/L (+) CUT/RES. W/L (+) ACID/RES.

INTERBEDDED LS's:

LS - TAN./SING. MICRO-/CRYPTO-XLN. XLN POR. & B-XLN. & FOSSIL FRALS. FIRM. NO ITR VIS POR.

LS - TAN/OFF WHITE VF OOLITES. CLR/OFFWHITE MATRIX & CHALKY. FRIABLE. FZVIS POR.

LS - OFF WHITE VF OOLITES. TAN/DK BROWN MATRIX, OPAQUE TO TRANSPARENT. B-XLN. -MIXED WITH- TAN VF OOLICAST. B-XLN. GDVIS POR. GOOD ODOR. SPD/UNIFORM HI YEL FLUORESCENCE. BROWN, FREE DK BEN OIL. NO GAS. UNIFORM DK BEN STAIN. (+) CUT/RES. (+) ACID/RES. OIL ON WASH WTR.

LS - TAN / & LT GRAY. SING / & HOT. MICRO-/& CRYPTO-XLN. XLN POR. SOME B-XLN. & BRGIL. & FOSSIL FRALS. FIRM. MOSTLY NO ITR VIS POR.

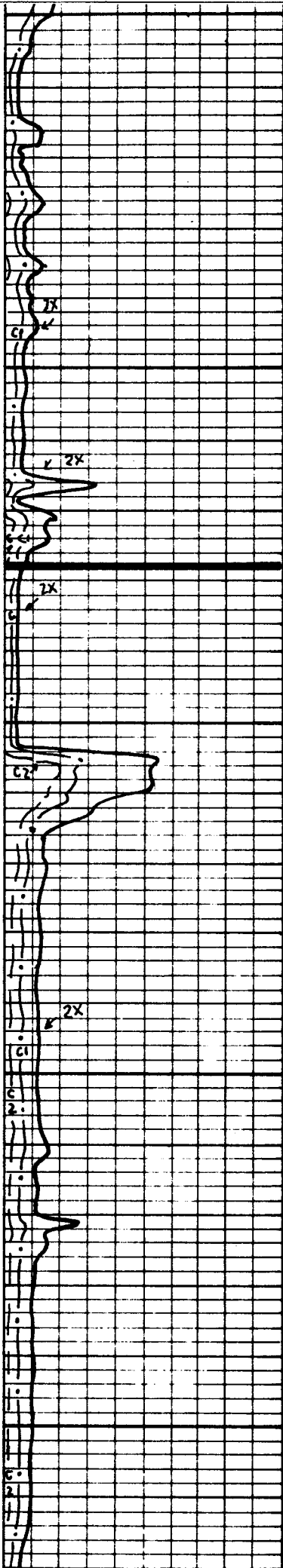
SH - LT / MED GRAY. SOFT. MASSIVE

LS - TAN / & TAN. & VLT GRAY. SING. & XF- / MICRO-XLN. XLN POR. & B-XLN. SOME BRGIL. SOME CHALK. PARTLY FRIABLE. TRFR VIS POR.

(ADD: CHEST-WHITE. OPAQUE. NO TRIP. NO INCLUSIONS.)

SH - LT / MED GRAY. SOFT. MASSIVE & CALC.

M/W: 54w/13w 02X
C1: 28w/13w 02X
C2: 20w/11w 02X



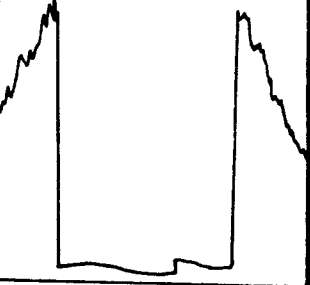
Vis 37 sec/OT. Wt 9.2² ppc.
Wtr Loss: 9.2 ml/30"
PV: 8 YP: 6 Gels: 215
PH: 9.2 CR(34)
CA*(40) LCM: 2#
Solus: 5.4%.

LANSING GP
4092' (-1128)

M/W: 16w/14w (B) 02X
C1: 7w/13w (+) 02X
C2: 4w/11w (+) 02X

CFS @ 4128: 50"
SIT: 10 strands.
CHC:
Hole Dev: 1/2" @ 4128'
DST #1.

DST #1 4106'-28'
REC: 5' Mud (OIL SPKS)
IFP: 18-22 / 15"
ISIP: 56 / 30"
FFP: 24-26 / 30"
FSIP: 55 / 60"
MH: 1967-1947 107°F



CFS @ 4217: 50"

Vis 49 sec/OT. Wt 9.1¹ ppc

TRILOBITE TESTING L.L.C.

OPERATOR : Presco Western, Harris Oi
 WELL NAME: Garner 1-1624
 LOCATION : 24-30-34 Haskell co KS
 INTERVAL : 4106.00 To 4128.00 ft

DATE 12-8-00
 KB 2964.00 ft TICKET NO: 12773 DST #1
 GR 2953.00 ft FORMATION: Lans-"A"
 TD 4128.00 ft TEST TYPE: CONVENTIONAL

RECORDER DATA

Mins	Field	1	2	3	4	TIME DATA-----
PF 15 Rec.	11058		2346			PF Fr. 2305 to 2320 hr
SI 30 Range (Psi)	4500.0	0.0	4995.0	0.0	0.0	IS Fr. 2320 to 2350 hr
SF 30 Clock (hrs)	12		alpin			SF Fr. 2350 to 1220 hr
FS 60 Depth (ft)	4123.0	0.0	4108.0	0.0	0.0	FS Fr. 1220 to 0120 hr

	Field	1	2	3	4	
A. Init Hydro	0.0	0.0	1967.0	0.0	0.0	T STARTED 2020 hr
B. First Flow	0.0	0.0	18.0	0.0	0.0	T ON BOTM 2302 hr
B1. Final Flow	0.0	0.0	22.0	0.0	0.0	T OPEN 2305 hr
C. In Shut-in	0.0	0.0	56.0	0.0	0.0	T PULLED 0120 hr
D. Init Flow	0.0	0.0	24.0	0.0	0.0	T OUT 0330 hr
E. Final Flow	0.0	0.0	26.0	0.0	0.0	
F. Fl Shut-in	0.0	0.0	55.0	0.0	0.0	TOOL DATA-----
G. Final Hydro	0.0	0.0	1947.0	0.0	0.0	Tool Wt. 4000.00 lbs
Inside/Outside	i		o			Wt Set On Packer 26000.00 lbs
						Wt Pulled Loose 90000.00 lbs
						Initial Str Wt 74000.00 lbs
						Unseated Str Wt 74000.00 lbs
						Bot Choke 0.75 in
						Hole Size 7.88 in
						D Col. ID 2.25 in
						D. Pipe ID 3.80 in
						D.C. Length 708.00 ft
						D.P. Length 3376.00 ft

RECOVERY

Tot Fluid 5.00 ft of 5.00 ft in DC and 0.00 ft in DP
 5.00 ft of Drilling mud w/oil spots
 0.00 ft of
 0.00 ft of
 0.00 ft of
 0.00 ft of
 0.00 ft of
 0.00 ft of

SALINITY 3000.00 P.P.M. A.P.I. Gravity 0.00

BLOW DESCRIPTION

Initial Flow:
 Weak 1/4" blow
 Initial Flow:
 No return.
 Final Flow:
 Bubble to open tool- no blow.
 Final Shut-In:
 No return.

MUD DATA-----

Mud Type	Chemical
Weight	9.10 lb/c
Vis.	48.00 S/L
W.L.	9.40 in3
F.C.	0.00 in
Mud Drop N	
Amt. of fill	0.00 ft
Btm. H. Temp.	107.00 F
Hole Condition	good
% Porosity	0.00
Packer Size	6.75 in
No. of Packers	2
Cushion Amt.	0.00
Cushion Type	
Reversed Out N	
Tool Chased N	
Tester	Shane McBride
Co. Rep.	Curtis Covey
Contr.	Cheyenne
Rig #	3
Unit #	
Pump T.	

SAMPLES:
 SENT TO:

Test Successful: Y

*** TOOL DIAGRAM *** CONVENTIONAL

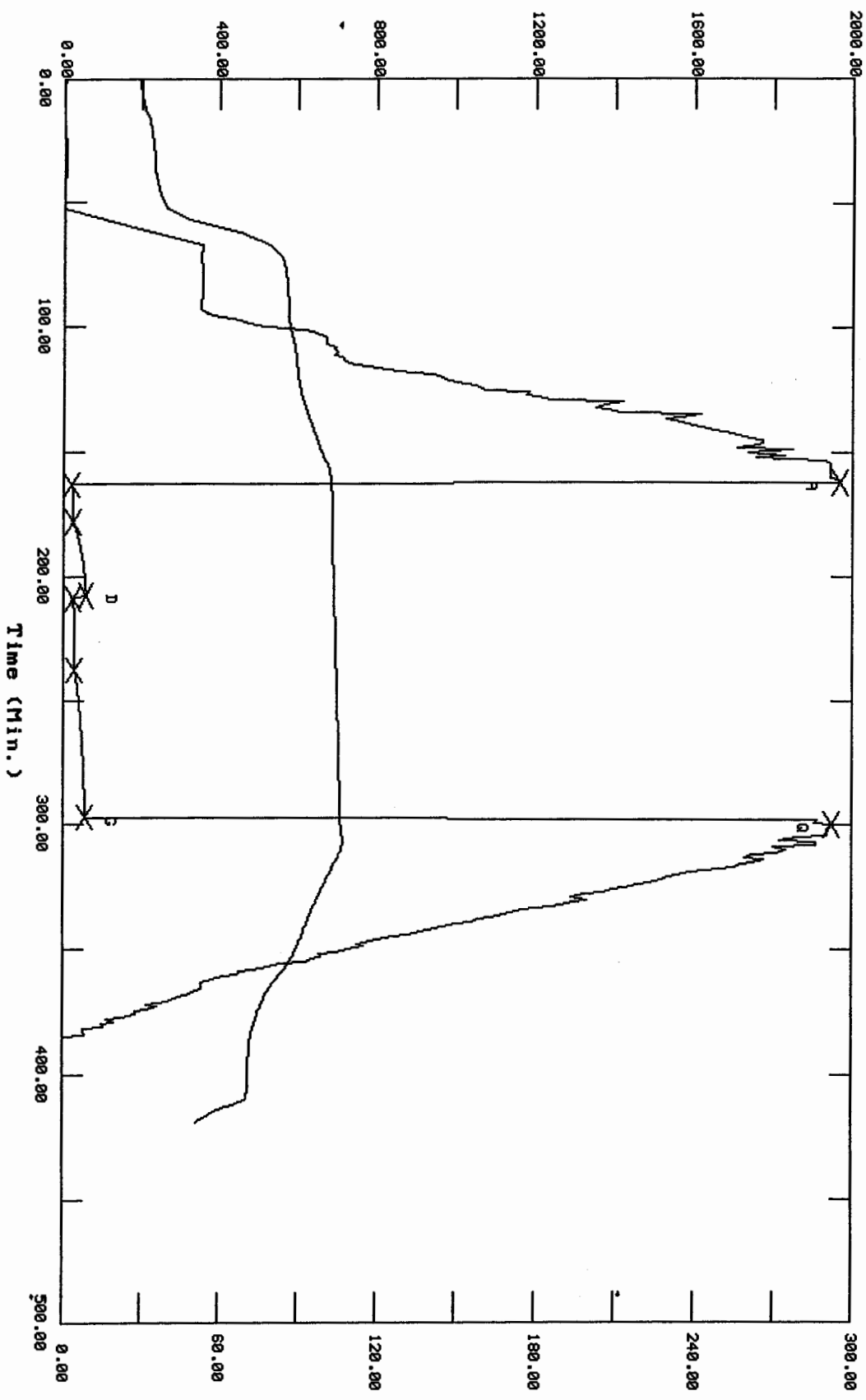
WELL NAME: Garner 1-1624	P.O. SUB	
	C.O. SUB 1'	4075
LOCATION : 24-30-34 Haskell, co KS	S.I. TOOL 5'	4081
TICKET No. 12773 D.S.T. No. 1 DATE 12-8-00	sampler 3'	4084
TOTAL TOOL TO BOTTOM OF TOP PACKERS 30	HMV 5'	4089
INTERVAL TOOL		
BOTTOM PACKERS AND ANCHOR 22	JARS 5'	4094
TOTAL TOOL 52		
DRILL COLLAR ANCHOR IN INTERVAL		
D.C. ANCHOR STND.Stands Single Total	SAFETY JOINT 2'	4096
D.P. ANCHOR STND.Stands Single Total	PACKER top	4101
TOTAL ASSEMBLY 52	PACKER bottom	4106
D.C. ABOVE TOOLS.Stands12 Single Total 708	DEPTH 4106	
D.P. ABOVE TOOLS.Stands54 Single 1 Total 3376	1'	4107
TOTAL DRILL COLLARS DRILL PIPE & TOOLS .. 4136	ANCHOR 1' perf	4108
	alpine recorder	4108
TOTAL DEPTH 4128	15' perf	4123
TOTAL DRILL PIPE ABOVE K.B. 8	ak-1 recorder	4123
REMARKS:		
Gas:		
Oil: spots		
Water:		
Mud: 4,000 ml.		
Total: 4,000 ml. mud		
Pressure 20 psi.		
	BULLNOSE 5' bullplug perf	4128'
	T.D.	4128

12773 DST # 1 Garner 1-1624 Presco Western, Harris Oil & Gas

TEST HISTORY

Flag Points
(Min.) (K PSig)

R:	0.00	1967.68
B:	0.00	18.47
C:	15.00	22.82
D:	30.00	56.46
E:	0.00	24.24
F:	29.00	26.80
G:	59.00	55.06
Q:	0.00	1947.81

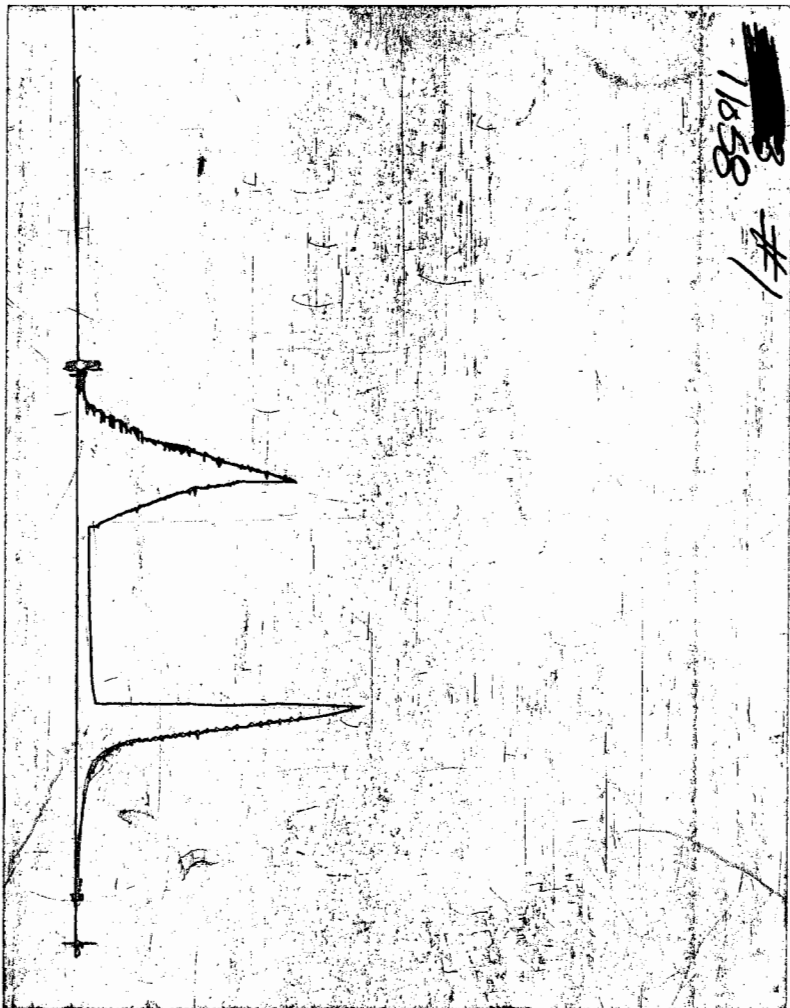


Temperature (DEG F)

Pressure (PSig)

Time (Min.)

CHART PAGE



This is a photocopy of the actual AK-1 recorder chart

TRILOBITE TESTING L.L.C.

P.O. Box 362 - Hays, Kansas 67601

FLUID SAMPLER DATA

Ticket No. # 12773 Date 12-8-00
Company Name Presco Western, Harris O. 1 1/2 GAS
Lease Garner #1-1624 Test No. # 1
County Haskell, Ks Sec. 24 Twp. 30 Rng. 34

SAMPLER RECOVERY

Gas _____ ML
Oil spots ML
Mud 4,000 ML
Water _____ ML
Other _____ ML
Pressure 20 PSI
Total 4,000 ML

PIT MUD ANALYSIS

Chlorides 3,000 ppm.
Resistivity — ohms @ — F
Viscosity 48
Mud Weight 9.1
Filtrate 9.4
Other LCM #1

SAMPLER ANALYSIS

~~Resistivity _____ ohms @ _____ F
Chlorides _____ ppm.
Gravity — corrected @ 60 F~~

PIPE RECOVERY

TOP
Resistivity _____ ohms @ _____ F
Chlorides Drilling Mud ppm.

MIDDLE
Resistivity _____ ohms @ _____ F
Chlorides _____ ppm.

BOTTOM
Resistivity _____ ohms @ _____ F
Chlorides _____ ppm.

(Bill To Presco Western)

TRILOBITE TESTING L.L.C.

P.O. Box 362 • Hays, Kansas 67601

Test Ticket

N° 12773

Well Name & No. Garner #1-1024 Test No. #1 Date 12-8-00
 Company Harris Oil & Gas (Presco Western) #2950 Zone Tested LANS "A"
 Address 1125 17th St Suite 2290, Denver Col. #2950 Elevation 2964 KB 2953 GL
 Co. Rep / Geo. Lantis Covey Cont. Cheyenne #3 Est. Ft. of Pay Por. %
 Location: Sec. 24 Twp. 30 Rge. 34 Co. Haskell State Ks
 No. of Copies Norm. Distribution Sheet (Y, N) Turnkey (Y, N) Evaluation (Y, N)

Interval Tested 4106 4128 Initial Str Wt./Lbs. 74,000 Unseated Str Wt./Lbs. 74,000
 Anchor Length 22 Wt. Set Lbs. 26,000 Wt. Pulled Loose/Lbs. 9,000
 Top Packer Depth 4101 Tool Weight 4,000
 Bottom Packer Depth 4106 Hole Size — 7 7/8" Rubber Size — 6 3/4"
 Total Depth 4128 Wt. Pipe Run Drill Collar Run 78' H-90 12 strand
 Mud Wt. 9.1 LCM #1 Vis. 48 WL 9.4 Drill Pipe Size 4 1/2 XH Ft. Run 3376 54/62 strand
 Blow Description Weak 1/4" in blow
No return
Bubble to open tool - No blow
No return

Recovery — Total Feet 5' GIP Ft. in DC 5' Ft. in DP
 Rec. 5' Feet Of Drilling Mud w/ spots %gas spots %oil %water 100 %mud
 Rec. Feet Of %gas %oil %water %mud
 Rec. Feet Of %gas %oil %water %mud
 Rec. Feet Of %gas %oil %water %mud
 Rec. Feet Of %gas %oil %water %mud
 BHT 107° °F Gravity °API D@ °F Corrected Gravity °API
 RW @ °F Chlorides ppm Recovery Chlorides 3000 ppm System

	AK-1	Alpine	PSI	Recorder No.	T-On Location
(A) Initial Hydrostatic Mud		1967		2344	18:45 pm 1:35
(B) First Initial Flow Pressure		18		(depth) 4108'	T-Started 20:20 pm
(C) First Final Flow Pressure		22		11058	T-Open 23:05 pm 7:10
(D) Initial Shut-In Pressure	<u>check</u>	56		(depth) 4123'	T-Pulled 01:20 a.m.
(E) Second Initial Flow Pressure	<u>stopped</u>	24			T-Out 03:30 a.m.
(F) Second Final Flow Pressure		26			T-Off Location 04:15 a.m.
(G) Final Shut-in Pressure		55		Initial Opening 15	Test Y 800
(Q) Final Hydrostatic Mud		1947		Initial Shut-in 30	Jars X 200
				Final Flow 30	Safety Joint X 50
				Final Shut-in 60	Straddle <u> </u>
					Circ. Sub X <u>N/C</u>
					Sampler X <u>200</u>
					Extra Packer <u> </u>
					Elec. Rec. X <u>150</u>
					Mileage <u>82 miles 28/way</u>
					Other <u> </u>
					TOTAL PRICE \$ <u>1428.00</u>

TRILOBITE TESTING L.L.C. SHALL NOT BE LIABLE FOR DAMAGE OF ANY KIND OF THE PROPERTY OR PERSONNEL OF THE ONE FOR WHOM A TEST IS MADE, OR FOR ANY LOSS SUFFERED OR SUSTAINED, DIRECTLY OR INDIRECTLY, THROUGH THE USE OF ITS EQUIPMENT, OR ITS STATEMENTS OR OPINION CONCERNING THE RESULTS OF ANY TEST. TOOLS LOST OR DAMAGED IN THE HOLE SHALL BE PAID FOR AT COST BY THE PARTY FOR WHOM THE TEST IS MADE.

Approved By [Signature]
 Our Representative [Signature]

TRILOBITE TESTING L.L.C.

OPERATOR : Harris Oil, Presco Wester DATE 12-9-00
 WELL NAME: Garner # 1-1624 KB 2964.00 ft TICKET NO: 12774 DST #2
 LOCATION : 24-30-34 Haskell co KS GR 2953.00 ft FORMATION:
 INTERVAL : 4380.00 To 4407.00 ft TD 4407.00 ft TEST TYPE: CONVENTIONAL

RECORDER DATA

Mins	Field	1	2	3	4	TIME DATA-----
PF 30 Rec.	11058		2346			PF Fr. 1210 to 1240 hr
SI 45 Range(Psi)	4500.0	0.0	4995.0	0.0	0.0	IS Fr. 1240 to 0125 hr
SF 60 Clock(hrs)	12		alpin			SF Fr. 0125 to 0225 hr
FS 90 Depth(ft)	4402.0	0.0	4382.0	0.0	0.0	FS Fr. 0225 to 0355 hr

	Field	1	2	3	4	
A. Init Hydro	2177.0	0.0	2093.0	0.0	0.0	T STARTED 2145 hr
B. First Flow	88.0	0.0	27.0	0.0	0.0	T ON BOTM 1207 hr
B1. Final Flow	100.0	0.0	42.0	0.0	0.0	T OPEN 1210 hr
C. In Shut-in	288.0	0.0	316.0	0.0	0.0	T PULLED 0355 hr
D. Init Flow	100.0	0.0	47.0	0.0	0.0	T OUT 0650 hr
E. Final Flow	100.0	0.0	72.0	0.0	0.0	
F. Fl Shut-in	828.0	0.0	855.0	0.0	0.0	
G. Final Hydro	2165.0	0.0	2028.0	0.0	0.0	
Inside/Outside	i		o			

TOOL DATA-----
 Tool Wt. 4000.00 lbs
 Wt Set On Packer 26000.00 lbs
 Wt Pulled Loose 90000.00 lbs
 Initial Str Wt 82000.00 lbs
 Unseated Str Wt 83000.00 lbs
 Bot Choke 0.75 in
 Hole Size 7.88 in
 D Col. ID 2.25 in
 D. Pipe ID 3.80 in
 D.C. Length 708.00 ft
 D.P. Length 3655.00 ft

RECOVERY

Tot Fluid 100.00 ft of 100.00 ft in DC and 0.00 ft in DP
 1268.00 ft of Gas in pipe very weak.
 100.00 ft of Gassy mud w/ trace of oil
 0.00 ft of 20% gas 3% oil 77% mud
 0.00 ft of
 0.00 ft of
 0.00 ft of
 0.00 ft of
 0.00 ft of
 0.00 ft of

SALINITY 0.00 P.P.M. A.P.I. Gravity 0.00

RELEASED

APR 25 2002

BLOW DESCRIPTION

Initial Flow:
 Bottom of bucket in 1/2 minute.
 Initial Shut-In:
 No return.
 Final Flow:
 Bottom of bucket in 5 minutes.
 Final Shut-In:
 No return.

FROM CONFIDENTIAL

KCC

MAR 27 2002

CONFIDENTIAL

MUD DATA-----
 Mud Type Chemical
 Weight 9.10 lb/c
 Vis. 48.00 S/L
 W.L. 8.60 in3
 F.C. 0.00 in
 Mud Drop N
 Amt. of fill 0.00 ft
 Btm. H. Temp. 113.00 F
 Hole Condition good
 % Porosity 0.00
 Packer Size 6.75 in
 No. of Packers 2
 Cushion Amt. 0.00
 Cushion Type
 Reversed Out N
 Tool Chased N
 Tester Shane McBride
 Co. Rep. Curtis Covey
 Contr. Cheyenne
 Rig # 3
 Unit #
 Pump T.

CONFIDENTIAL

ORIGINAL

SAMPLES:
 SENT TO:

Test Successful: Y

*** TOOL DIAGRAM *** CONVENTIONAL

WELL NAME: Garner # 1-1624

LOCATION : 24-30-34 Haskell co,KS

TICKET No. 12774 D.S.T. No. 2 DATE 12-9-00

TOTAL TOOL TO BOTTOM OF TOP PACKERS 27

INTERVAL TOOL

BOTTOM PACKERS AND ANCHOR 27

TOTAL TOOL 54

DRILL COLLAR ANCHOR IN INTERVAL

D.C. ANCHOR STND.Stands Single Total

D.P. ANCHOR STND.Stands Single Total

TOTAL ASSEMBLY 54

D.C. ABOVE TOOLS.Stands12 Single Total 708

D.P. ABOVE TOOLS.Stands Single Total 3655

TOTAL DRILL COLLARS DRILL PIPE & TOOLS .. 4417

TOTAL DEPTH 4407

TOTAL DRILL PIPE ABOVE K.B. 10

REMARKS:

NO. 1153
 NOV 11 1900
 NOV 11 1900
 NOV 11 1900

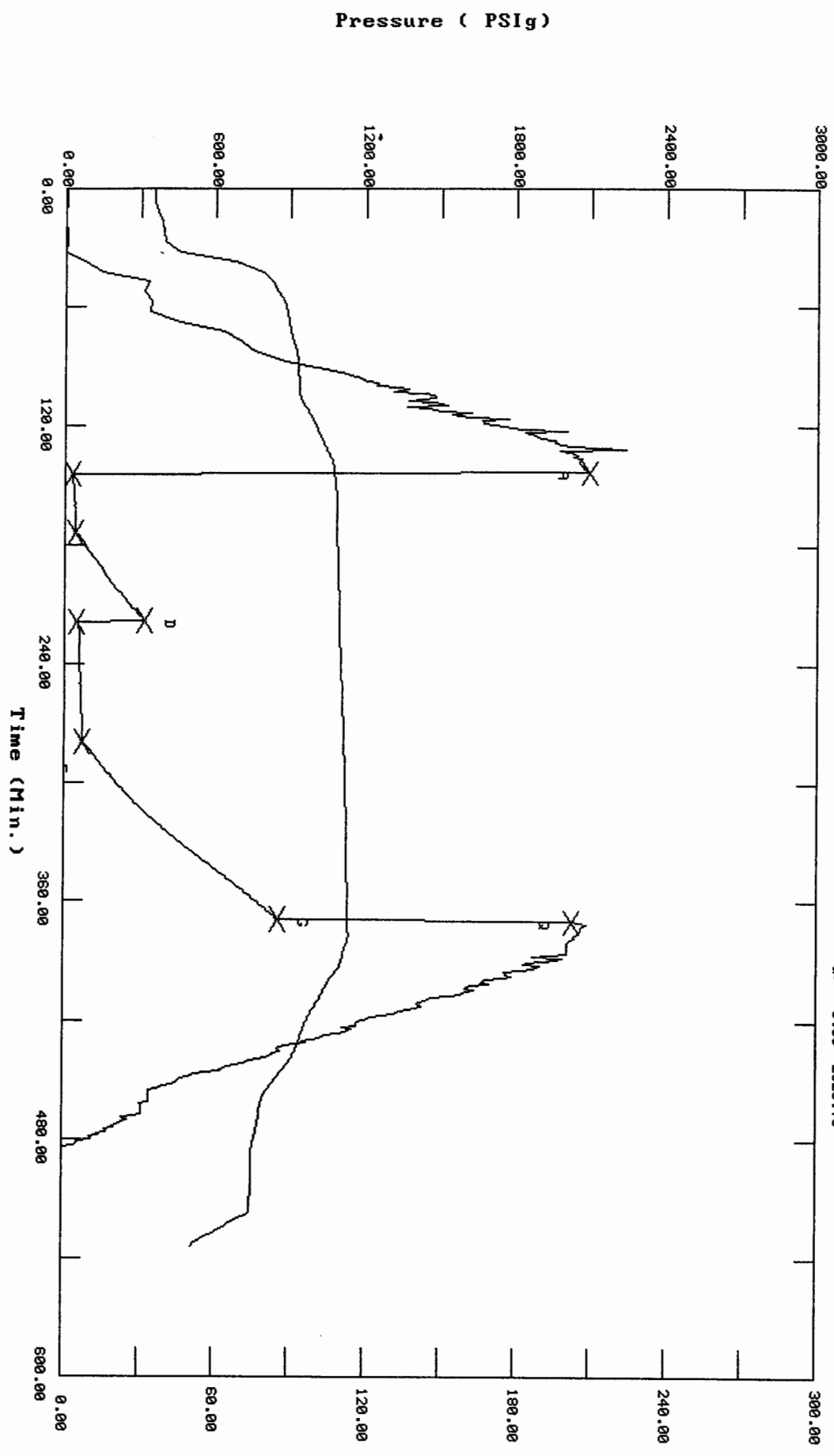
P.O. SUB	
C.O. SUB 1'	4352
S.I. TOOL 5'	4358
HMV 5'	4363
JARS 5'	4368
SAFETY JOINT 2'	4370
PACKER top	4375
PACKER bottom	4380
DEPTH 4380	
1'	4381
ANCHOR 1' perf	4382
alpine recorder	4382
20' perf	4402
ak-1 recorder	4402
BULLNOSE 5' bullplug perf	4407
T.D.	4407

12774 DST #2 Garner # 1-1624 Harris Oil, Presco Western

TEST HISTORY

Flag Points
t(Min.) P(PSig)

R:	0.00	2093.85
B:	0.00	27.32
C:	30.00	42.42
D:	44.00	316.83
E:	0.00	47.53
F:	51.00	72.14
G:	89.00	855.59
Q:	0.00	2028.76

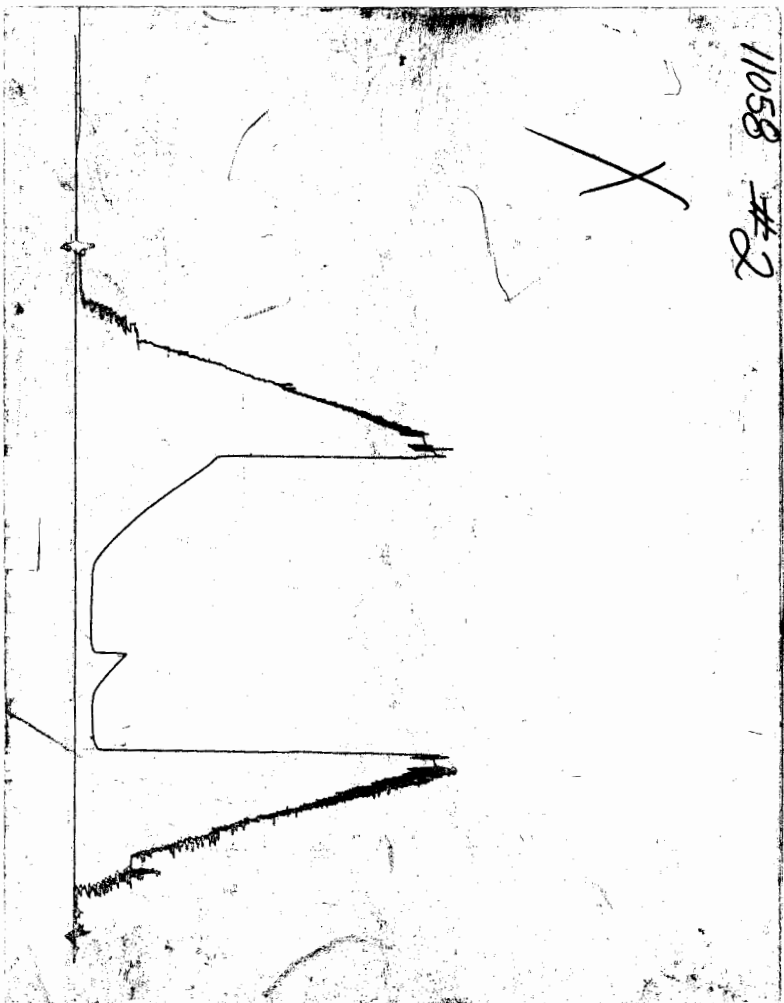


Pressure (PSig)

Temperature (DEG F)

Time (Min.)

CHART PAGE



This is a photocopy of the actual AK-1 recorder chart

Bill to Harris Oil & Gas

TRILOBITE TESTING L.L.C.

P.O. Box 362 • Hays, Kansas 67601

Test Ticket

N^o 12774

Well Name & No. Garner #1-1624 Test No. #2 Date 12-9-00
 Company Harris Oil & Gas / Presco Western Zone Tested _____
 Address 1125 17th St Suite 2290 Denver Colo Elevation 2964 KB 2953 GL
 Co. Rep / Geo. Curtis Covey Cont. Cheyenne #3 Est. Ft. of Pay _____ Por. _____ %
 Location: Sec. 24 Twp. 30 Rge. 34 Co. Haskell State Ks
 No. of Copies Norm Distribution Sheet (Y, N) N Turnkey (Y, N) _____ Evaluation (Y, N) _____

Interval Tested 4380' 4407' Initial Str Wt./Lbs. 82,000 Unseated Str Wt./Lbs. 83,000
 Anchor Length _____ 27' Wt. Set Lbs. 26,000 Wt. Pulled Loose/Lbs. 90,000
 Top Packer Depth _____ 4375' Tool Weight 4,000
 Bottom Packer Depth _____ 4380' Hole Size — 7 7/8" Rubber Size — 6 3/4"
 Total Depth _____ 4407' Wt. Pipe Run _____ Drill Collar Run 708 H-90
 Mud Wt. 9.1 LCM #3 Vis. 48 WL 8.6 Drill Pipe Size 4 1/2 X H Ft. Run 3655'
 Blow Description B.O.B in 1/2 min
No return
B.O.B in 5 min.
No return

Recovery — Total Feet 100' GIP 1260' (very weak) Ft. in DC 100' Ft. in DP _____
 Rec. 100' Feet Of Grassy Mud w/ trace oil %gas 20 %oil 3 %water 77 %mud
 Rec. _____ Feet Of _____ %gas _____ %oil _____ %water _____ %mud
 Rec. _____ Feet Of _____ %gas _____ %oil _____ %water _____ %mud
 Rec. 1268' Feet Of Gas In Pipe (very weak) %gas _____ %oil _____ %water _____ %mud
 Rec. _____ Feet Of _____ %gas _____ %oil _____ %water _____ %mud
 BHT 113° °F Gravity _____ °API D@ _____ °F Corrected Gravity _____ °API
 RW _____ @ _____ °F Chlorides _____ ppm Recovery Chlorides 3,000 ppm System

	AK-1	Alpine	PSI	Recorder No.	T-On Location
(A) Initial Hydrostatic Mud	<u>2177</u>	<u>2093</u>		<u>2346</u>	<u>19:15 p.m.</u>
(B) First Initial Flow Pressure	<u>88</u>	<u>27</u>		(depth) <u>4382'</u>	T-Started <u>21:45 p.m.</u>
(C) First Final Flow Pressure	<u>100</u>	<u>42</u>		Recorder No. <u>11058</u>	T-Open <u>12:10 A.M.</u>
(D) Initial Shut-In Pressure	<u>288</u>	<u>316</u>		(depth) <u>4402'</u>	T-Pulled <u>03:55 A.M. 9:05</u>
(E) Second Initial Flow Pressure	<u>100</u>	<u>47</u>		Recorder No. _____	T-Out <u>06:50 A.M.</u>
(F) Second Final Flow Pressure	<u>100</u>	<u>72</u>		(depth) _____	T-Off Location <u>07:35 A.M.</u>
(G) Final Shut-in Pressure	<u>828</u>	<u>855</u>		Initial Opening <u>30</u>	Test <u>X</u> <u>800</u>
(Q) Final Hydrostatic Mud	<u>2165</u>	<u>2028</u>		Initial Shut-in <u>45</u>	Jars <u>X</u> <u>200</u>
				Final Flow <u>60</u>	Safety Joint <u>X</u> <u>50</u>
				Final Shut-in <u>90</u>	Straddle _____
					Circ. Sub <u>X</u> <u>N/C</u>
					Sampler _____
					Extra Packer _____
					Elec. Rec. <u>X</u> <u>150</u>
					Mileage <u>82 miles / way 26</u>
					Other <u>cut time 2.5 75</u>
					TOTAL PRICE \$ <u>1301</u>

TRILOBITE TESTING L.L.C. SHALL NOT BE LIABLE FOR DAMAGE OF ANY KIND OF THE PROPERTY OR PERSONNEL OF THE ONE FOR WHOM A TEST IS MADE, OR FOR ANY LOSS SUFFERED OR SUSTAINED, DIRECTLY OR INDIRECTLY, THROUGH THE USE OF ITS EQUIPMENT, OR ITS STATEMENTS OR OPINION CONCERNING THE RESULTS OF ANY TEST. TOOLS LOST OR DAMAGED IN THE HOLE SHALL BE PAID FOR AT COST BY THE PARTY FOR WHOM THE TEST IS MADE.

Approved By _____

Our Representative _____

[Handwritten signatures]

TRILOBITE TESTING L.L.C.

OPERATOR : Harris Oil & Gas, Presco DATE 12-11-00
 WELL NAME: Garner # 1-1624 KB 2964.00 ft TICKET NO: 12775 DST #3
 LOCATION : 24-30-34 Haskell co KS GR 2953.00 ft FORMATION: KC A
 INTERVAL : 4550.00 To 4600.00 ft TD 4600.00 ft TEST TYPE: CONVENTIONAL

RECORDER DATA

Mins	Field	1	2	3	4	TIME DATA-----
PF 30 Rec.	11058		2346			PF Fr. 0210 to 0240 hr
SI 45 Range(Psi)	4500.0	0.0	4995.0	0.0	0.0	IS Fr. 0240 to 0325 hr
SF 60 Clock(hrs)	12		alpin			SF Fr. 0325 to 0425 hr
FS 90 Depth(ft)	4595.0	0.0	4552.0	0.0	0.0	FS Fr. 0425 to 0555 hr

	Field	1	2	3	4	
A. Init Hydro	2289.0	0.0	2172.0	0.0	0.0	T STARTED 1200 hr
B. First Flow	122.0	0.0	88.0	0.0	0.0	T ON BOTM 0207 hr
B1. Final Flow	177.0	0.0	211.0	0.0	0.0	T OPEN 0210 hr
C. In Shut-in	1120.0	0.0	1146.0	0.0	0.0	T PULLED 0555 hr
D. Init Flow	266.0	0.0	233.0	0.0	0.0	T OUT 0910 hr
E. Final Flow	333.0	0.0	360.0	0.0	0.0	
F. Fl Shut-in	1142.0	0.0	1173.0	0.0	0.0	TOOL DATA-----
G. Final Hydro	2278.0	0.0	2079.0	0.0	0.0	Tool Wt. 5000.00 lbs
Inside/Outside	i		o			Wt Set On Packer 26000.00 lbs
						Wt Pulled Loose 96000.00 lbs
						Initial Str Wt 76000.00 lbs
						Unseated Str Wt 78000.00 lbs
						Bot Choke 0.75 in
						Hole Size 7.88 in
						D Col. ID 2.25 in
						D. Pipe ID 3.80 in
						D.C. Length 708.00 ft
						D.P. Length 3868.00 ft

RECOVERY

Tot Fluid 770.00 ft of 708.00 ft in DC and 62.00 ft in DP
 1055.00 ft of Gas in pipe
 300.00 ft of Gassy oil cut mud 20%g 10%oi 70%
 60.00 ft of Gassy slightly oil & water cut mud
 0.00 ft of 20% gas 8% oil 22% water 50% mud
 180.00 ft of Slightly oil & gas cut muddy water
 0.00 ft of 20% gas 2% oil 68% water 10% mud
 230.00 ft of Gassy water w/ oil spots
 0.00 ft of 20% gas 80% water
 SALINITY 0.00 P.P.M. A.P.I. Gravity 0.00

MUD DATA-----

Mud Type	Chemical
Weight	9.10 lb/c
Vis.	50.00 S/L
W.L.	8.60 in3
F.C.	0.00 in
Mud Drop N	
Amt. of fill	0.00 ft
Btm. H. Temp.	120.00 F
Hole Condition	good
% Porosity	0.00
Packer Size	6.75 in
No. of Packers	2
Cushion Amt.	0.00
Cushion Type	
Reversed Out N	
Tool Chased N	
Tester	Shane McBride
Co. Rep.	Curtis Covey
Contr.	Cheyenne
Rig #	3
Unit #	
Pump T.	

BLOW DESCRIPTION

Initial Flow:
 Bottom of bucket in 1/2 minute.
 Initial Shut-In:
 Bled off for 4 minutes, weak surface
 return in 5 minutes. Died in 18minutes
 Final Flow:
 Bottom of bucket in 1 minute.
 Final Shut-In:
 Bled off for 5 minutes, return in 2
 minutes. Bottom of bucket in 4 minutes
 Died back to 9".

SAMPLES:
 SENT TO:

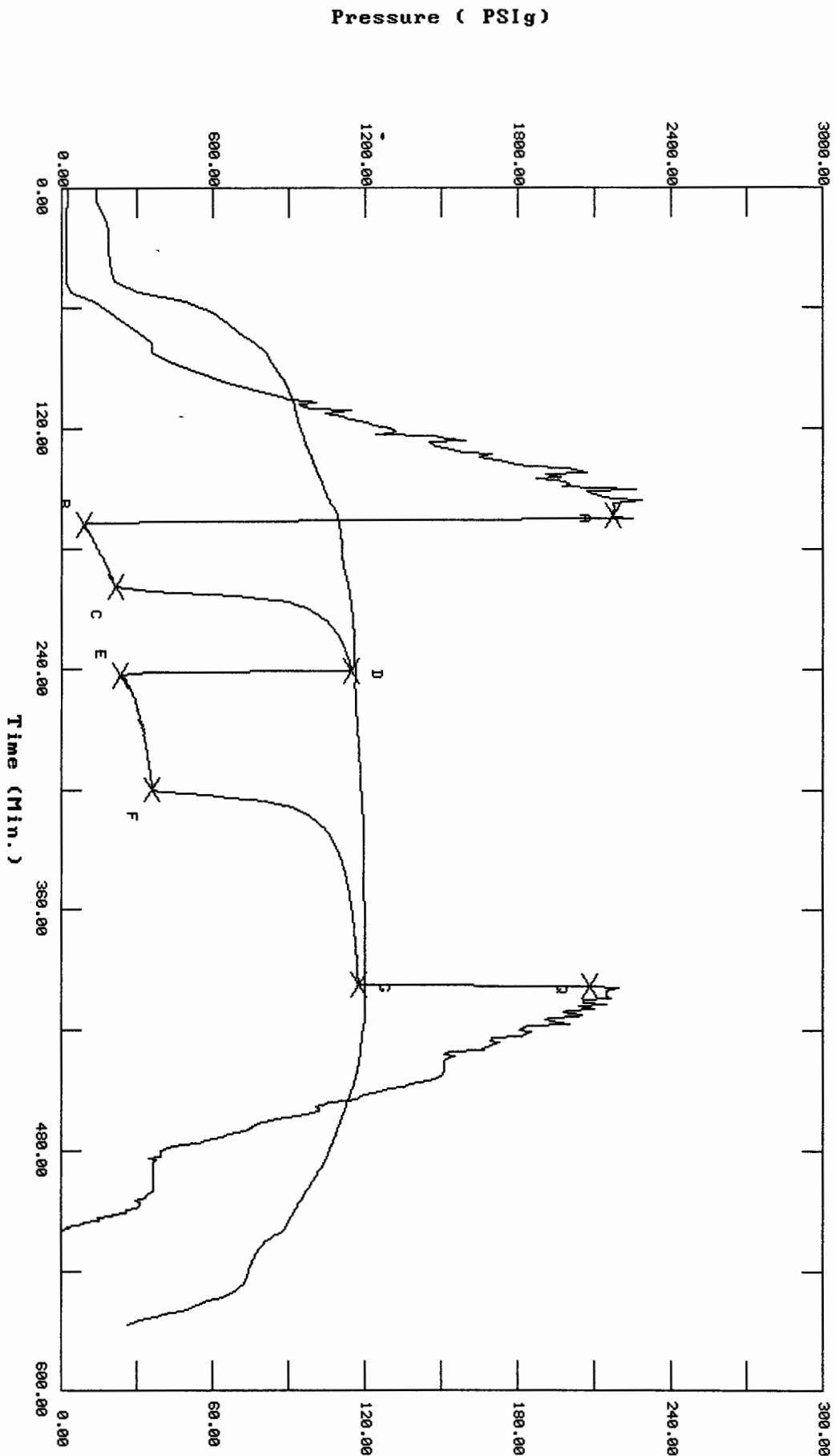
Test Successful: Y

12775 DST #3 Garner # 1-1624 Harris Oil & Gas, Presco Western

TEST HISTORY

Flag Points

t (Min.)	P (PSig)
A: 0.00	2172.06
B: 0.00	88.56
C: 31.00	211.45
D: 42.00	1146.90
E: 0.00	233.12
F: 57.00	369.77
G: 97.00	1173.52
Q: 0.00	2079.55

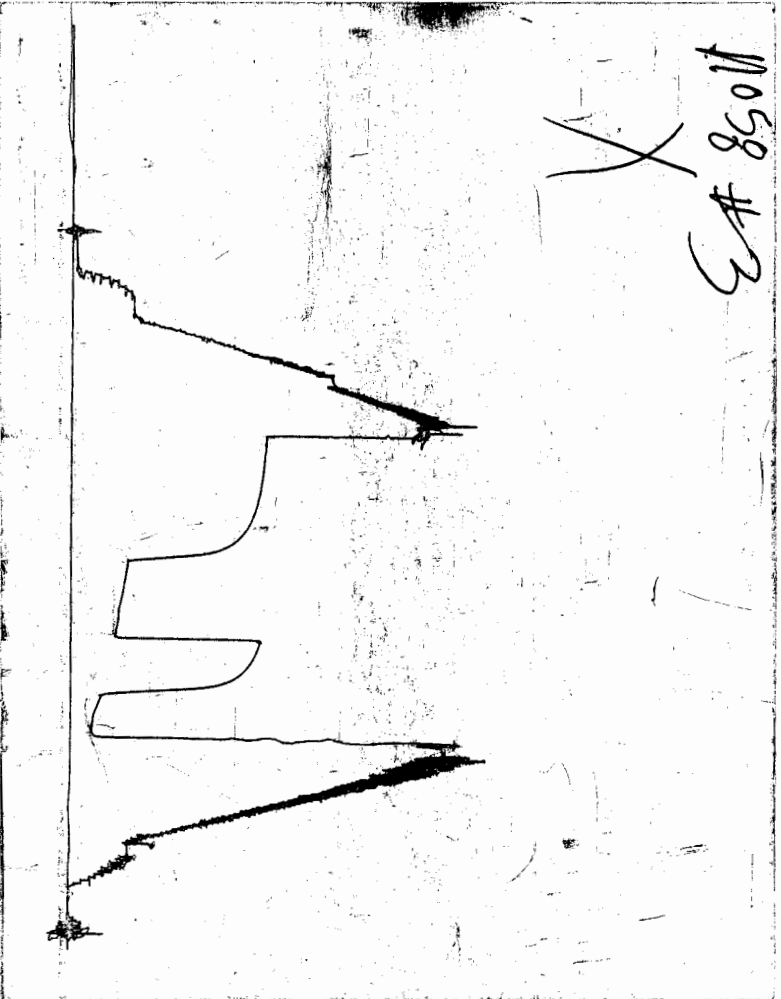


Pressure (PSig)

Temperature (DEG F)

Time (Min.)

CHART PAGE



This is a photocopy of the actual AK-1 recorder chart

(Bill To Harris Oil)

TRILOBITE TESTING L.L.C.

P.O. Box 362 • Hays, Kansas 67601

Fax to Harris!
+ Harold Fowler
(316) 624-9178

Test Ticket

N^o 12775

Well Name & No. GAMES #1-1629 Test No. #3 Date 12-10-00
 Company Harris Oil & Gas Zone Tested KC 'A'
 Address 1125 17th St Suite 2290 Denver, Colo Elevation 2968' KB 2953 GL
 Co. Rep / Geo. Curtis Covey Cont. Cheyenne #3 Est. Ft. of Pay 4' Por. %
 Location: Sec. 24 Twp. 30 Rge. 34 Co. Haskell State Ks
 No. of Copies None Distribution Sheet (Y, N) Turnkey (Y, N) Evaluation (Y, N)

Interval Tested 4550' 4600' Initial Str Wt./Lbs. 76,000 Unseated Str Wt./Lbs. 78,000
 Anchor Length 50' Wt. Set Lbs. 26,000 Wt. Pulled Loose/Lbs. 96,000
 Top Packer Depth 4545' Tool Weight 5,000
 Bottom Packer Depth 4550' Hole Size — 7 7/8" Rubber Size — 6 3/4"
 Total Depth 4600' Wt. Pipe Run Drill Collar Run 708 #90
 Mud Wt. 9.1 LCM #3 Vis. 50 WL 8.6 Drill Pipe Size 4 1/2 XH Ft. Run 3868'
 Blow Description B.O.B in 1/2 min.

Bleed off for 4 min, Weak Surface return in 5 min, died in 18 min.

B.O.B in 1 min

Bleed off for 5 min, return in 2 min, B.O.B in 1 1/4 min, died back to 9"

Recovery — Total Feet	GIP	Ft. in DC	Ft. in DP
<u>770'</u>	<u>1055'</u>	<u>708'</u>	<u>62'</u>
Rec. <u>300</u> Feet Of <u>90C M</u>	<u>20% gas</u>	<u>10 % oil</u>	<u>% water 70% mud</u>
Rec. <u>60</u> Feet Of <u>950' WCM</u>	<u>20% gas</u>	<u>8 % oil</u>	<u>22% water 50% mud</u>
Rec. <u>180</u> Feet Of <u>50' 9CM W</u>	<u>20% gas</u>	<u>2 % oil</u>	<u>68% water 10% mud</u>
Rec. <u>230</u> Feet Of <u>9 W w/1 spits</u>	<u>20% gas</u>	<u>spot % oil</u>	<u>80% water % mud</u>
Rec. <u> </u> Feet Of <u> </u>	<u>% gas</u>	<u>% oil</u>	<u>% water % mud</u>
BHT <u>120°</u> °F Gravity <u> </u> °API D@ <u> </u> °F Corrected Gravity <u> </u> °API			
RW <u> </u> @ <u> </u> °F Chlorides <u> </u> ppm Recovery Chlorides <u>3,000</u> ppm System			

	AK-1	Alpine	PSI	Recorder No.	T-On Location
(A) Initial Hydrostatic Mud	<u>2289</u>	<u>2172</u>		<u>2346</u>	<u>21:20 p.m. 2:41</u>
(B) First Initial Flow Pressure	<u>122</u>	<u>88</u>	PSI	(depth) <u>4552'</u>	T-Started <u>12:00 A.M.</u>
(C) First Final Flow Pressure	<u>177</u>	<u>211</u>	PSI	Recorder No. <u>11058</u>	T-Open <u>02:10 A.M.</u>
(D) Initial Shut-In Pressure	<u>1120</u>	<u>1146</u>	PSI	(depth) <u>4595'</u>	T-Pulled <u>05:55 A.M. 9:10</u>
(E) Second Initial Flow Pressure	<u>266</u>	<u>233</u>	PSI	Recorder No. <u> </u>	T-Out <u>09:10 A.M.</u>
(F) Second Final Flow Pressure	<u>333</u>	<u>360</u>	PSI	(depth) <u> </u>	T-Off Location <u>09:55 A.M.</u>
(G) Final Shut-in Pressure	<u>1142</u>	<u>1173</u>	PSI	Initial Opening <u>30</u>	Test <u>X</u> <u>800</u>
(Q) Final Hydrostatic Mud	<u>2278</u>	<u>2079</u>	PSI	Initial Shut-in <u>45</u>	Jars <u>Y</u> <u>200</u>
				Final Flow <u>60</u>	Safety Joint <u>X</u> <u>50</u>
				Final Shut-in <u>90</u>	Straddle <u> </u>
					Circ. Sub <u>X</u> <u>N/C</u>
					Sampler <u> </u>
					Extra Packer <u> </u>
					Elec. Rec. <u>X</u> <u>150</u>
					Mileage <u> </u>
					Other <u>est 2.5 75</u>
					TOTAL PRICE \$ <u>1275</u>

TRILOBITE TESTING L.L.C. SHALL NOT BE LIABLE FOR DAMAGE OF ANY KIND OF THE PROPERTY OR PERSONNEL OF THE ONE FOR WHOM A TEST IS MADE, OR FOR ANY LOSS SUFFERED OR SUSTAINED, DIRECTLY OR INDIRECTLY, THROUGH THE USE OF ITS EQUIPMENT, OR ITS STATEMENTS OR OPINION CONCERNING THE RESULTS OF ANY TEST. TOOLS LOST OR DAMAGED IN THE HOLE SHALL BE PAID FOR AT COST BY THE PARTY FOR WHOM THE TEST IS MADE.

Approved By Doug Loun (Cushy Harris)

Our Representative Shane McE...

TRILOBITE TESTING L.L.C.

OPERATOR : Harris Oil & Gas DATE 12-13-00
 WELL NAME: Garner # 1-1624 KB 2964.00 ft TICKET NO: 13651 DST #4
 LOCATION : 24-30-34 Haskell co KS GR 2953.00 ft FORMATION: Morrow/St.Genevieve
 INTERVAL : 5207.00 To 5342.00 ft TD 5342.00 ft TEST TYPE: CONVENTIONAL

RECORDER DATA

Mins	Field	1	2	3	4	TIME DATA-----
PF 0 Rec.	11058		2346			PF Fr. to hr
SI 0 Range(Psi)	4500.0	0.0	4995.0	0.0	0.0	IS Fr. to hr
SF 0 Clock(hrs)	12		alpin			SF Fr. to hr
FS 0 Depth(ft)	5337.0	0.0	5210.0	0.0	0.0	FS Fr. to hr

	Field	1	2	3	4	
A. Init Hydro	0.0	0.0	2510.0	0.0	0.0	T STARTED 0945 hr
B. First Flow	0.0	0.0	0.0	0.0	0.0	T ON BOTM 1203 hr
B1. Final Flow	0.0	0.0	0.0	0.0	0.0	T OPEN 1205 hr
C. In Shut-in	0.0	0.0	0.0	0.0	0.0	T PULLED 1210 hr
D. Init Flow	0.0	0.0	0.0	0.0	0.0	T OUT 1515 hr
E. Final Flow	0.0	0.0	0.0	0.0	0.0	
F. Fl Shut-in	0.0	0.0	0.0	0.0	0.0	
G. Final Hydro	0.0	0.0	2505.0	0.0	0.0	
Inside/Outside	i		o			

TOOL DATA-----
 Tool Wt. 5000.00 lbs
 Wt Set On Packer 26000.00 lbs
 Wt Pulled Loose 120000.00 lbs
 Initial Str Wt 79000.00 lbs
 Unseated Str Wt 83000.00 lbs
 Bot Choke 0.75 in
 Hole Size 7.88 in
 D Col. ID 2.25 in
 D. Pipe ID 3.80 in
 D.C. Length 708.00 ft
 D.P. Length 4577.00 ft

RECOVERY

Tot Fluid 740.00 ft of 708.00 ft in DC and 22.00 ft in DP
 740.00 ft of drilling mud 100% mud
 0.00 ft of
 0.00 ft of
 0.00 ft of
 0.00 ft of
 0.00 ft of
 0.00 ft of
 0.00 ft of

SALINITY 1800.00 P.P.M. A.P.I. Gravity 0.00

BLOW DESCRIPTION

I.O.-
 failed again, pull tool.

MUD DATA-----
 Mud Type Chemical
 Weight 9.10 lb/c
 Vis. 58.00 S/L
 W.L. 7.40 in3
 F.C. 0.00 in
 Mud Drop Y 0.0 ft

Amt. of fill 0.00 ft
 Btm. H. Temp. 116.00 F
 Hole Condition tight
 % Porosity 0.00
 Packer Size 6.75 in
 No. of Packers 2
 Cushion Amt. 0.00
 Cushion Type
 Reversed Out N
 Tool Chased N
 Tester Shane McBride
 Co. Rep. Curtis Covey
 Contr. Cheyenne
 Rig # 3
 Unit #
 Pump T.

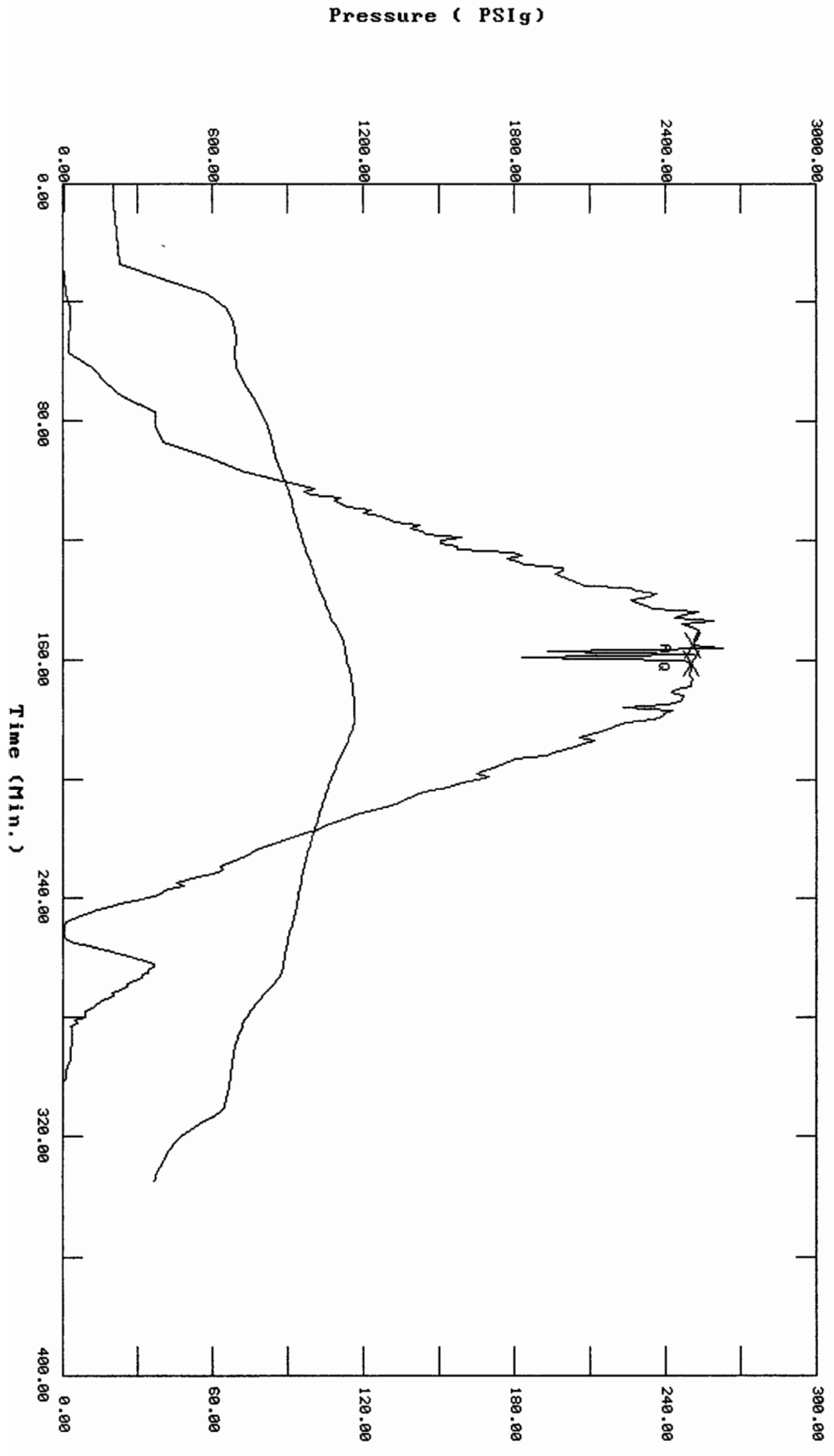
SAMPLES:
 SENT TO:

Test Successful: N

13651 DST #4 Garner # 1-1624 Harris Oil & Gas

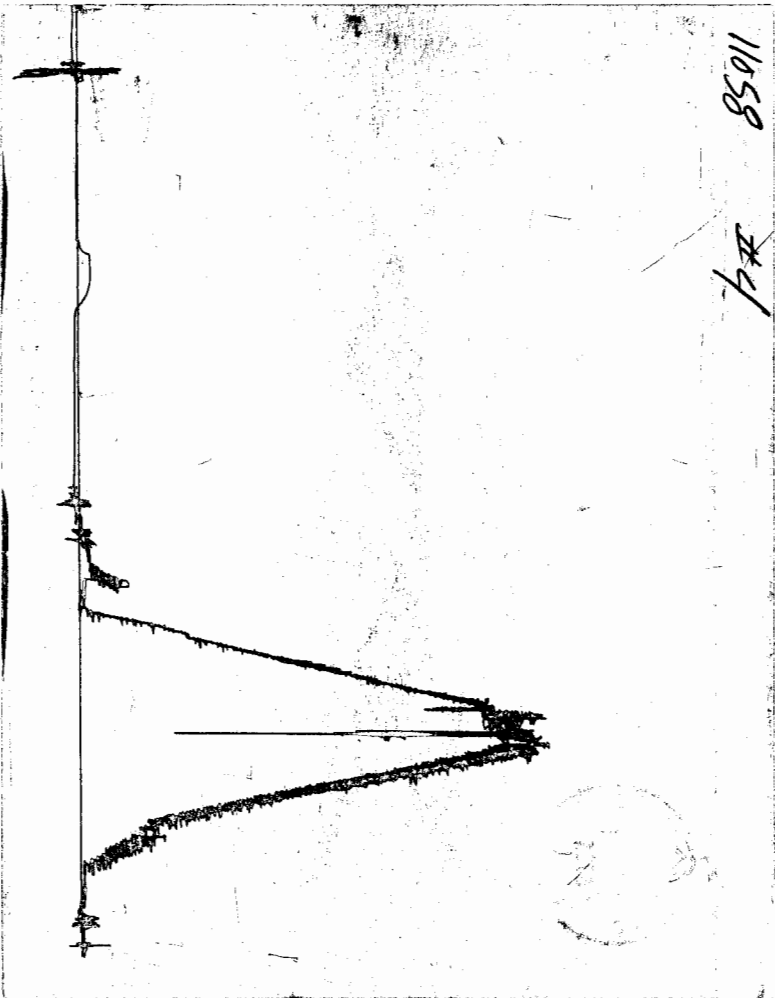
TEST HISTORY

Flag Points
 t(Min.) P(PSig)
 R: 0.00 2510.76
 Q: 0.00 2505.51



Temperature (DEG F)

CHART PAGE



This is a photocopy of the actual AK-1 recorder chart

TRILOBITE TESTING L.L.C.

P.O. Box 362 • Hays, Kansas 67601

No. 13651

Test Ticket

Well Name & No. <u>Garner #1-1624</u>	Test No. <u>#4</u>	Date <u>12-13-00</u>
Company <u>Harris Oil & Gas</u>	Zone Tested <u>Morrow/St. Genevieve</u>	
Address <u>1125 17th St, Suite 2290, Denver, Colo.</u>	Elevation <u>2964'</u> KB <u>2953'</u> GL	
Co. Rep / Geo. <u>Curtis Corey</u>	Cont. <u>Cheyenne #3</u>	Est. Ft. of Pay <u> </u> Por. <u> </u> %
Location: Sec. <u>24</u> Twp. <u>30</u> Rge. <u>34</u> Co. <u>Haskell</u> State <u>Ks</u>		
No. of Copies <u>Norm.</u> Distribution Sheet (Y, N) <u> </u>	Turnkey (Y, N) <u> </u>	Evaluation (Y, N) <u> </u>

Interval Tested <u>5207</u>	<u>5342</u>	Initial Str Wt./Lbs. <u>79,000</u>	Unseated Str Wt./Lbs. <u>83,000</u>
Anchor Length <u> </u>	<u>135</u>	Wt. Set Lbs. <u>26,000</u>	Wt. Pulled Loose/Lbs. <u>120,000</u>
Top Packer Depth <u> </u>	<u>5202</u>	Tool Weight <u>5,000</u>	
Bottom Packer Depth <u> </u>	<u>5207</u>	Hole Size — 7 7/8" <input checked="" type="checkbox"/>	Rubber Size — 6 3/4" <input checked="" type="checkbox"/>
Total Depth <u> </u>	<u>5342</u>	Wt. Pipe Run <u> </u>	Drill Collar Run <u>708' H-90</u>
Mud Wt. <u>9.1+</u> LCM <u>#4</u> Vis. <u>58</u> WL <u>7.4</u>		Drill Pipe Size <u>4 1/2 XH</u>	Ft. Run <u>4577'</u>
Blow Description <u>Packer failure @ open - reset tool - failed again - pull tool</u>			

Recovery — Total Feet <u>740'</u>	GIP <u> </u>	Ft. in DC <u>708</u>	Ft. in DP <u>32'</u>
Rec. <u>740'</u> Feet Of <u>Drilling Mud</u>	%gas <u> </u>	%oil <u> </u>	%water <u>100</u> %mud <u> </u>
Rec. <u> </u> Feet Of <u> </u>	%gas <u> </u>	%oil <u> </u>	%water <u> </u> %mud <u> </u>
Rec. <u> </u> Feet Of <u> </u>	%gas <u> </u>	%oil <u> </u>	%water <u> </u> %mud <u> </u>
Rec. <u> </u> Feet Of <u> </u>	%gas <u> </u>	%oil <u> </u>	%water <u> </u> %mud <u> </u>
Rec. <u> </u> Feet Of <u> </u>	%gas <u> </u>	%oil <u> </u>	%water <u> </u> %mud <u> </u>
BHT <u>116"</u> °F Gravity <u> </u>	°API D@ <u> </u>	°F Corrected Gravity <u> </u>	°API <u> </u>
RW <u> </u> @ <u> </u> °F Chlorides <u> </u>	ppm Recovery <u> </u>	Chlorides <u>1800</u>	ppm System <u> </u>

(A) Initial Hydrostatic Mud	AK-1 <u>2510</u>	Alpine	PSI Recorder No. <u>2346</u>	T-On Location <u>07:35 A.M.</u>
(B) First Initial Flow Pressure			PSI (depth) <u>5210'</u>	T-Started <u>09:45 A.M.</u>
(C) First Final Flow Pressure			PSI Recorder No. <u>11058</u>	T-Open <u>12:05 P.M.</u>
(D) Initial Shut-in Pressure			PSI (depth) <u>5337'</u>	T-Pulled <u>12:10 P.M.</u>
(E) Second Initial Flow Pressure			PSI Recorder No. <u> </u>	T-Out <u>15:15 P.M.</u>
(F) Second Final Flow Pressure			PSI (depth) <u> </u>	T-Off Location <u>16:40 P.M.</u>
(G) Final Shut-in Pressure			PSI Initial Opening <u> </u>	Test <u>X</u>
(Q) Final Hydrostatic Mud	<u>2505</u>		PSI Initial Shut-in <u> </u>	Jars <u>X</u>
			Final Flow <u> </u>	Safety Joint <u>X</u>
			Final Shut-in <u> </u>	Straddle <u> </u>

TRILOBITE TESTING L.L.C. SHALL NOT BE LIABLE FOR DAMAGE OF ANY KIND OF THE PROPERTY OR PERSONNEL OF THE ONE FOR WHOM A TEST IS MADE, OR FOR ANY LOSS SUFFERED OR SUSTAINED, DIRECTLY OR INDIRECTLY, THROUGH THE USE OF ITS EQUIPMENT, OR ITS STATEMENTS OR OPINION CONCERNING THE RESULTS OF ANY TEST. TOOLS LOST OR DAMAGED IN THE HOLE SHALL BE PAID FOR AT COST BY THE PARTY FOR WHOM THE TEST IS MADE.

Approved By [Signature]

Our Representative [Signature]

Circ. Sub X N/C
Sampler
Extra Packer
Elec. Rec. X
Mileage 82 miles / way
Other
TOTAL PRICE \$