

WELL NAME: MLP Schnellbacher #3-4
COMPANY: Chesapeake Operating Co.
LOCATION: 4-30S-34W
Haskell County, Kansas
DATE: 5/19/98

TRILOBITE TESTING L.L.C.

OPERATOR : Chesapeake Oper. Inc. DATE 5-9-98
 WELL NAME: Schnellbacher #3-4 KB 2986.00 ft TICKET NO: 10219 DST #1
 LOCATION : 4-30S-34W Haskel KS GR 2975.00 ft FORMATION: Lansing "H"
 INTERVAL : 4330.00 To 4362.00 ft TD 4362.00 ft TEST TYPE: CONVENTIONAL

RECORDER DATA

| Mins | Field | 1 | 2 | 3 | 4 | TIME DATA----- | |
|-------|-------------|--------|--------|--------|-----|------------------------|------------------------|
| PF 30 | Rec. | 10242 | 10242 | Alpine | | PF Fr. 0120 to 0150 hr | |
| SI 60 | Range(Psi) | 4100.0 | 4100.0 | 5000.0 | 0.0 | 0.0 | IS Fr. 0150 to 0250 hr |
| SF 45 | Clock(hrs) | 12 HR | 12 HR | 24 HR | | | SF Fr. 0250 to 0335 hr |
| FS 90 | Depth(ft) | 4359.0 | 4359.0 | 4332.0 | 0.0 | 0.0 | FS Fr. 0335 to 0505 hr |

| | Field | 1 | 2 | 3 | 4 | |
|----------------|--------|--------|--------|-----|-----|-------------------------------|
| A. Init Hydro | 2139.0 | 2158.0 | 2065.0 | 0.0 | 0.0 | T STARTED 2320 hr |
| B. First Flow | 93.0 | 108.0 | 34.0 | 0.0 | 0.0 | T ON BOTM 0117 hr |
| B1. Final Flow | 102.0 | 115.0 | 69.0 | 0.0 | 0.0 | T OPEN 0120 hr |
| C. In Shut-in | 1250.0 | 1153.0 | 1100.0 | 0.0 | 0.0 | T PULLED 0505 hr |
| D. Init Flow | 114.0 | 126.0 | 60.0 | 0.0 | 0.0 | T OUT 0800 hr |
| E. Final Flow | 121.0 | 129.0 | 88.0 | 0.0 | 0.0 | |
| F. Fl Shut-in | 1203.0 | 1093.0 | 1025.0 | 0.0 | 0.0 | TOOL DATA----- |
| G. Final Hydro | 2103.0 | 2113.0 | 2038.0 | 0.0 | 0.0 | Tool Wt. 1800.00 lbs |
| Inside/Outside | O | O | I | | | Wt Set On Packer 22000.00 lbs |

RECOVERY

Tot Fluid 245.00 ft of 211.00 ft in DC and 34.00 ft in DP
 4083.00 ft of Gas in pipe
 125.00 ft of Slight gas cut mud 5%Gas 95%Mud
 120.00 ft of Water cut gassy mud with specs of oil
 0.00 ft of 18% gas 10% water 72% mud
 0.00 ft of
 0.00 ft of
 0.00 ft of
 0.00 ft of

SALINITY 42000.00 P.P.M. A.P.I. Gravity 0.00

BLOW DESCRIPTION

Initial Flow:
 Very strong, OBB w/2" cracked. Decreased to off bottom of bucket blow in 30 mins.
 Initial Shut-in:
 No blow back
 Final Flow:
 Strong off bottom of bucket immediatley gas to surface in 5 mins.
 Final Shut-in:
 No blow back

SAMPLES: One
 SENT TO: Caraway

Test Successful: Y

MUD DATA-----
 Mud Type Chemical
 Weight 9.00 lb/c
 Vis. 46.00 S/L
 W.L. 10.40 in3
 F.C. 0.00 in
 Mud Drop Y 20.0 ft
 Amt. of fill 0.00 ft
 Btm. H. Temp. 113.00 F
 Hole Condition Fair
 % Porosity 20.00
 Packer Size 6.75 in
 No. of Packers 2
 Cushion Amt. 0.00
 Cushion Type
 Reversed Out N
 Tool Chased N
 Tester Lanny Saloga
 Co. Rep. Doug Davis
 Contr. Murfin
 Rig # 20
 Unit #
 Pump T.

GAS RECOVERY

COMPANY: Chesapeake Oper. Inc. DATE: 5-9-98
WELL NAME: Schnellbacher #3-4 KB Elev: 2986.00 ft TICKET #10219 DST #1
WELL LOCATION: 4-30S-34W Haskel KS GR Elev: 2975.00 ft FORMATION: Lansing "H"
INTERVAL Fr.: 4330.00 To 4362.00 T.D.: 4362.00 ft TEST TYPE: CONVENTIONAL

GAS RECOVERY MEASURED WITH Merla Orifice

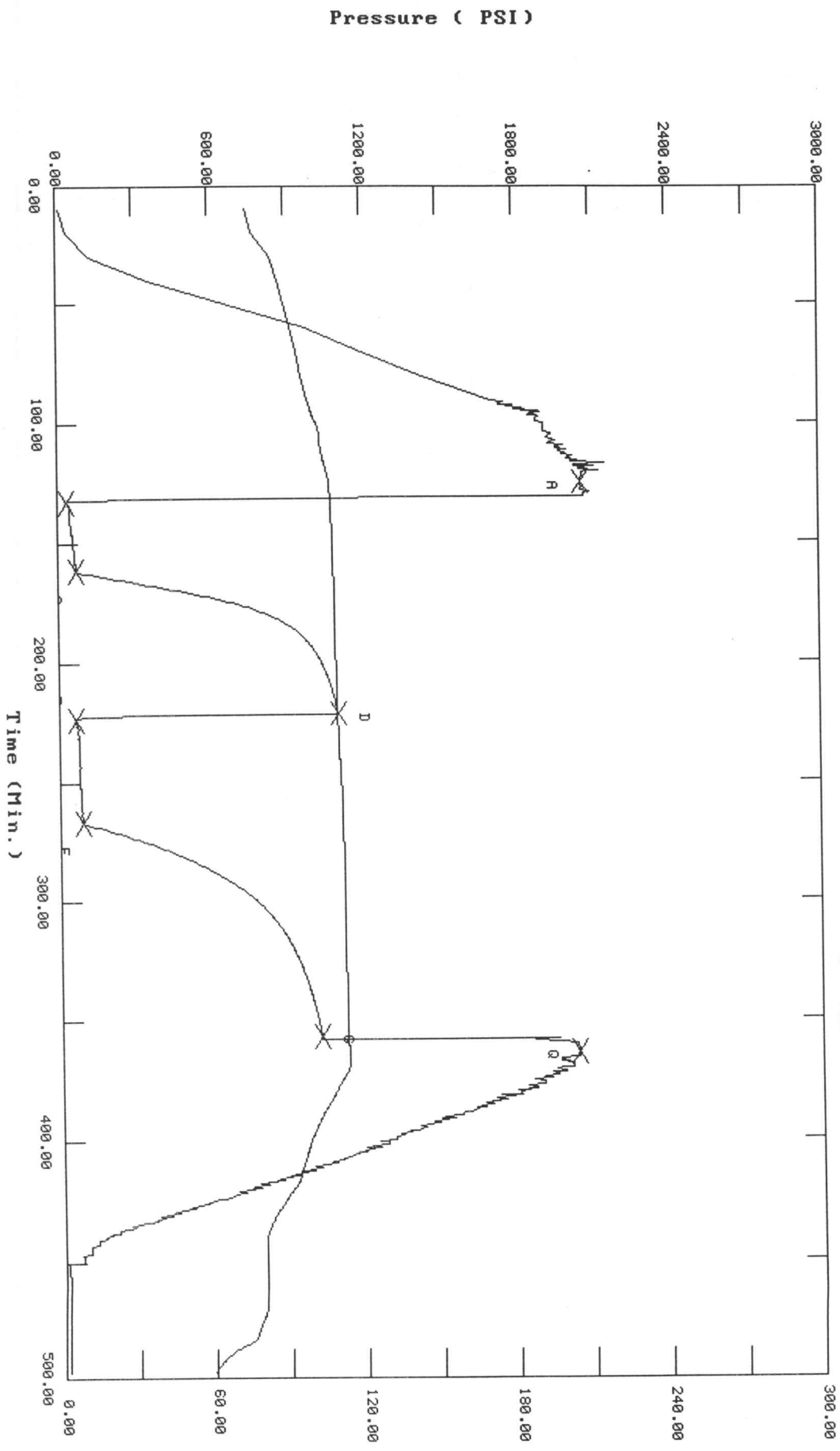
***** GAS RATES FOR FLOW #2

| Time (min) | Orifice (in) | Pressure (Psi) | H2O (in) | Rate (cf/d) |
|---------------|-----------------|-------------------|-------------|----------------|
| 10 | 0.25 | 0 | 15 | 6550.0 |
| 20 | 0.25 | 0 | 16 | 6720.0 |
| 30 | 0.25 | 0 | 16 | 6720.0 |
| 40 | 0.25 | 0 | 17 | 6930.0 |

TEST HISTORY
 10219 D.S.T.#1 Schnellbacher #3-4 Chesapeake Oper. Co.

Flag Points

| Time (Min.) | Pressure (PSI) |
|-------------|----------------|
| A: 0.00 | 2065.37 |
| B: 0.00 | 34.55 |
| C: 28.50 | 69.51 |
| D: 60.00 | 1100.50 |
| E: 0.00 | 60.82 |
| F: 43.50 | 88.92 |
| G: 90.00 | 1025.53 |
| H: 0.00 | 2038.43 |



Temperature (DEG F)

Pressure (PSI)

TRILOBITE TESTING L.L.C.

OPERATOR : Chesapeake Oper. Inc. DATE 5-10-98
 WELL NAME: Schnellbacher #3-4 KB 2986.00 ft TICKET NO: 10220 DST #2
 LOCATION : 4-30S-34W Haskell KS GR 2975.00 ft FORMATION: K.C. "A"
 INTERVAL : 4526.00 To 4560.00 ft TD 4560.00 ft TEST TYPE: CONVENTIONAL

RECORDER DATA

| Mins | Field | 1 | 2 | 3 | 4 | TIME DATA----- |
|-------|-------------|--------|--------|--------|-----|----------------------------|
| PF 30 | Rec. | 10242 | 10242 | Alpine | | PF Fr. 0030 to 0100 hr |
| SI 60 | Range(Psi) | 4100.0 | 4100.0 | 5000.0 | 0.0 | 0.0 IS Fr. 0100 to 0200 hr |
| SF 45 | Clock(hrs) | 12 HR | 12 HR | 24 HR | | SF Fr. 0200 to 0245 hr |
| FS 90 | Depth(ft) | 4557.0 | 4557.0 | 4528.0 | 0.0 | 0.0 FS Fr. 0245 to 0415 hr |

| | Field | 1 | 2 | 3 | 4 | |
|----------------|--------|--------|--------|-----|-----|-------------------------------|
| A. Init Hydro | 2197.0 | 2240.0 | 2153.0 | 0.0 | 0.0 | T STARTED 2235 hr |
| B. First Flow | 88.0 | 114.0 | 43.0 | 0.0 | 0.0 | T ON BOTM 0027 hr |
| B1. Final Flow | 149.0 | 175.0 | 154.0 | 0.0 | 0.0 | T OPEN 0030 hr |
| C. In Shut-in | 1290.0 | 1317.0 | 1269.0 | 0.0 | 0.0 | T PULLED 0415 hr |
| D. Init Flow | 200.0 | 231.0 | 160.0 | 0.0 | 0.0 | T OUT 0720 hr |
| E. Final Flow | 240.0 | 274.0 | 240.0 | 0.0 | 0.0 | |
| F. Fl Shut-in | 1284.0 | 1314.0 | 1267.0 | 0.0 | 0.0 | TOOL DATA----- |
| G. Final Hydro | 2180.0 | 2203.0 | 2135.0 | 0.0 | 0.0 | Tool Wt. 1800.00 lbs |
| Inside/Outside | 0 | 0 | I | | | Wt Set On Packer 22000.00 lbs |
| | | | | | | Wt Pulled Loose 10000.00 lbs |
| | | | | | | Initial Str Wt 58000.00 lbs |
| | | | | | | Unseated Str Wt 60000.00 lbs |
| | | | | | | Bot Choke 0.75 in |
| | | | | | | Hole Size 7.78 in |
| | | | | | | D Col. ID 2.25 in |
| | | | | | | D. Pipe ID 3.80 in |
| | | | | | | D.C. Length 211.00 ft |
| | | | | | | D.P. Length 4302.00 ft |

RECOVERY

Tot Fluid 460.00 ft of 211.00 ft in DC and 249.00 ft in DP
 30.00 ft of Gas in pipe
 90.00 ft of Oil and gas cut watery mud
 0.00 ft of 5% gas 8% oil 30% water 57% mud
 370.00 ft of Gassy water with scum of oil
 0.00 ft of 4% gas 96% water
 0.00 ft of
 0.00 ft of
 0.00 ft of
 SALINITY 73000.00 P.P.M. A.P.I. Gravity 0.00

BLOW DESCRIPTION

Initial Flow:
 Surface blow, built to strong, off
 bottom of bucket in 21 mins.
 Initial Shut-in:
 No blow-back.
 Final Flow
 Surface blow, built to strong, off
 bottom of bucket in 44 mins.
 Final Shut-in:
 No blow-back.

SAMPLES: None
 SENT TO:

MUD DATA-----
 Mud Type Chemical
 Weight 9.00 lb/cf
 Vis. 47.00 S/L
 W.L. 11.20 in3
 F.C. 0.00 in
 Mud Drop Y 30.0 ft
 Amt. of fill 0.00 ft
 Btm. H. Temp. 119.00 F
 Hole Condition Fair
 % Porosity 25.00
 Packer Size 6.75 in
 No. of Packers 2
 Cushion Amt. 0.00
 Cushion Type
 Reversed Out N
 Tool Chased N
 Tester Lanny Saloga
 Co. Rep. Doug Davis
 Contr. Murfin
 Rig # 20
 Unit #
 Pump T.

Test Successful: Y

TEST HISTORY

Flag Points

| t (Min.) | P (PSI) |
|----------|---------|
| A: 0.00 | 2153.87 |
| B: 0.00 | 43.02 |
| C: 29.50 | 154.13 |
| D: 61.00 | 1269.99 |
| E: 0.00 | 160.32 |
| F: 45.50 | 240.85 |
| G: 91.00 | 1267.64 |
| Q: 0.00 | 2135.46 |

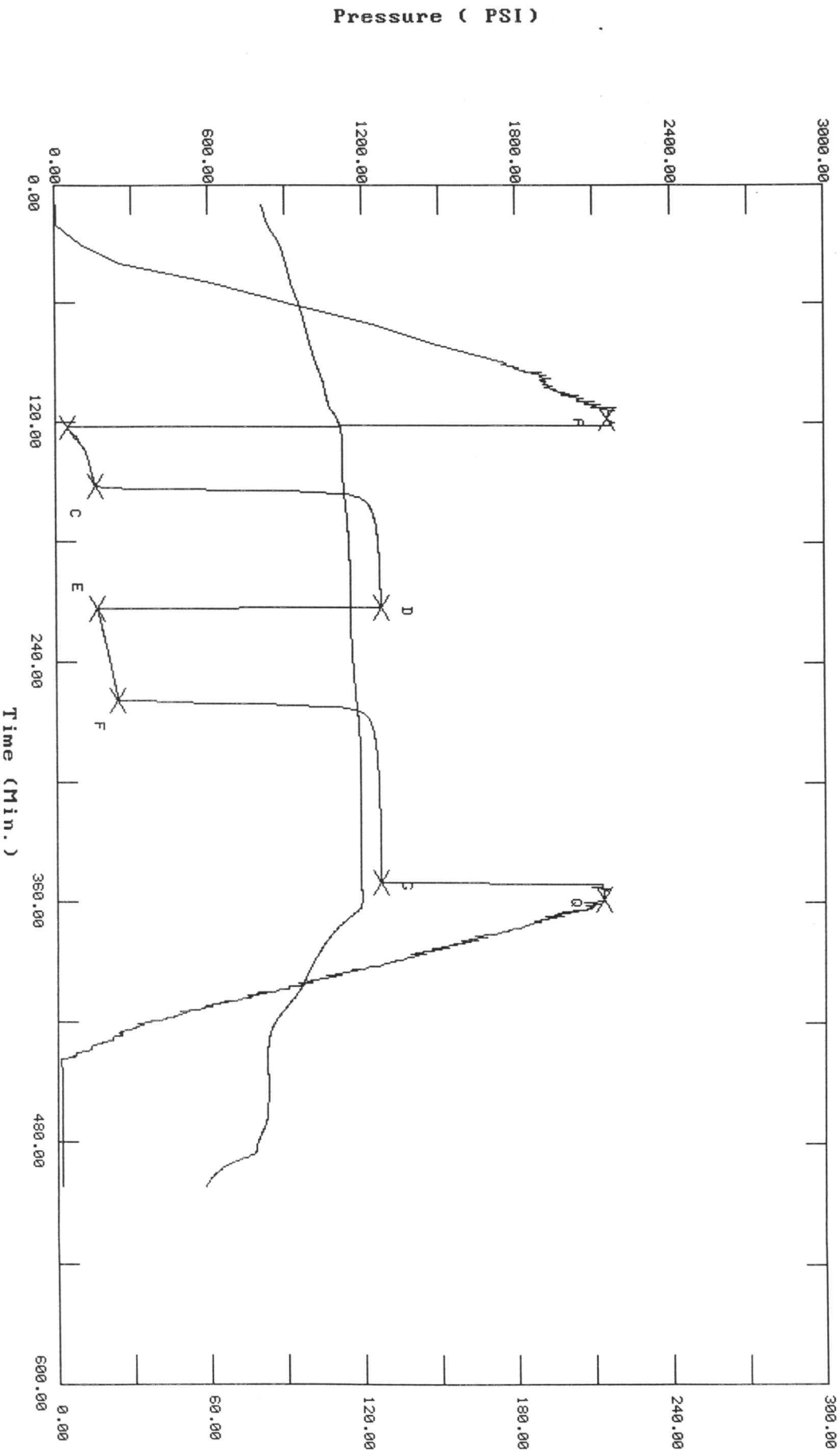
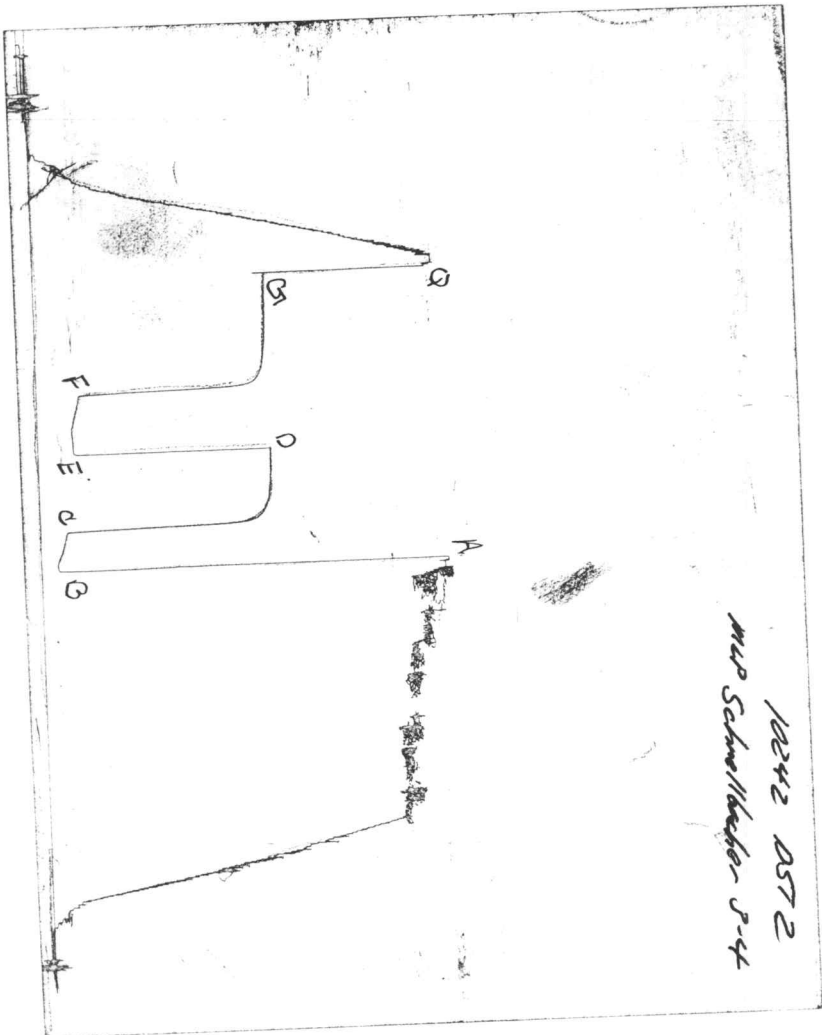


CHART PAGE



This is a photocopy of the actual AK-1 recorder chart

TRILOBITE TESTING L.L.C.

OPERATOR : Chesapeake Op. Co. DATE 5-13-98
 WELL NAME: MLP Schnellbacher #34 KB 2986.00 ft TICKET NO: 9820 DST #3
 LOCATION : 4-30s-34w Haskell KS GR 2974.00 ft FORMATION: Morrow
 INTERVAL : 5194.00 To 5285.00 ft TD 5285.00 ft TEST TYPE: CONVENTIONAL

RECORDER DATA

| Mins | | Field | 1 | 2 | 3 | 4 | TIME DATA----- |
|-------|-------------|--------|--------|--------|-----|-----|------------------------|
| PF 30 | Rec. | 13252 | 13252 | 3026 | | | PF Fr. 0120 to 0150 hr |
| SI 60 | Range(Psi) | 4550.0 | 4550.0 | 4995.0 | 0.0 | 0.0 | IS Fr. 0150 to 0250 hr |
| SF 45 | Clock(hrs) | 12hr | 12hr | elect | | | SF Fr. 0250 to 0335 hr |
| FS 90 | Depth(ft) | 5285.0 | 5285.0 | 5258.0 | 0.0 | 0.0 | FS Fr. 0335 to 0505 hr |

| | Field | 1 | 2 | 3 | 4 | |
|----------------|--------|--------|--------|-----|-----|-------------------------------|
| A. Init Hydro | 2481.0 | 2479.0 | 2531.0 | 0.0 | 0.0 | T STARTED 2015 hr |
| B. First Flow | 69.0 | 73.0 | 54.0 | 0.0 | 0.0 | T ON BOTM 0119 hr |
| B1. Final Flow | 92.0 | 82.0 | 83.0 | 0.0 | 0.0 | T OPEN 0120 hr |
| C. In Shut-in | 1440.0 | 1439.0 | 1462.0 | 0.0 | 0.0 | T PULLED 0505 hr |
| D. Init Flow | 103.0 | 105.0 | 87.0 | 0.0 | 0.0 | T OUT 0745 hr |
| E. Final Flow | 126.0 | 112.0 | 118.0 | 0.0 | 0.0 | |
| F. Fl Shut-in | 1463.0 | 1454.0 | 1466.0 | 0.0 | 0.0 | TOOL DATA----- |
| G. Final Hydro | 2367.0 | 2386.0 | 2470.0 | 0.0 | 0.0 | Tool Wt. 1800.00 lbs |
| Inside/Outside | 0 | 0 | I | | | Wt Set On Packer 24000.00 lbs |
| | | | | | | Wt Pulled Loose 75000.00 lbs |
| | | | | | | Initial Str Wt 64000.00 lbs |
| | | | | | | Unseated Str Wt 64000.00 lbs |
| | | | | | | Bot Choke 0.75 in |
| | | | | | | Hole Size 7.78 in |
| | | | | | | D Col. ID 2.25 in |
| | | | | | | D. Pipe ID 3.38 in |
| | | | | | | D.C. Length 244.00 ft |
| | | | | | | D.P. Length 4890.00 ft |

RECOVERY

Tot Fluid 140.00 ft of 140.00 ft in DC and 0.00 ft in DP
 140.00 ft of oil speced mud
 0.00 ft of
 0.00 ft of
 0.00 ft of
 0.00 ft of
 0.00 ft of
 0.00 ft of
 0.00 ft of
 0.00 ft of

SALINITY 0.00 P.P.M. A.P.I. Gravity 0.00

BLOW DESCRIPTION

Initial Flow:
 Weak surface blow built to 1 1/2"
 Initial Shut-in:
 No blow back
 Final Flow:
 Open weak blow 1.5"
 Initial Shut-in:
 No blow back

SAMPLES:
 SENT TO:

MUD DATA-----

Mud Type chemical
 Weight 9.20 lb/c
 Vis. 46.00 S/L
 W.L. 9.20 in3
 F.C. 0.00 in
 Mud Drop Y 20.0 ft
 Amt. of fill 0.00 ft
 Btm. H. Temp. 125.00 F
 Hole Condition good
 % Porosity 10.00
 Packer Size 6.75 in
 No. of Packers 2
 Cushion Amt. 0.00
 Cushion Type
 Reversed Out N
 Tool Chased N
 Tester Scott Bugbee
 Co. Rep. Doug Davis
 Contr. Murfin
 Rig # 20
 Unit #
 Pump T.

Test Successful: Y

*** TOOL DIAGRAM *** CONVENTIONAL

WELL NAME: MLB Schnellbacher #34

LOCATION : 4-30s-34w Haskell KS

TICKET No. 9820 D.S.T. No. 3 DATE 5-13-98

TOTAL TOOL TO BOTTOM OF TOP PACKERS 27

INTERVAL TOOL

BOTTOM PACKERS AND ANCHOR 30

TOTAL TOOL 57

DRILL COLLAR ANCHOR IN INTERVAL

D.C. ANCHOR STND.Stands Single Total

D.P. ANCHOR STND.Stands 1 Single Total 63

TOTAL ASSEMBLY 118

D.C. ABOVE TOOLS.Stands3 Single 1 Total 244

D.P. ABOVE TOOLS.Stands79 Single 1 Total 4951

TOTAL DRILL COLLARS DRILL PIPE & TOOLS .. 5315

TOTAL DEPTH 5285

TOTAL DRILL PIPE ABOVE K.B. 30

REMARKS:

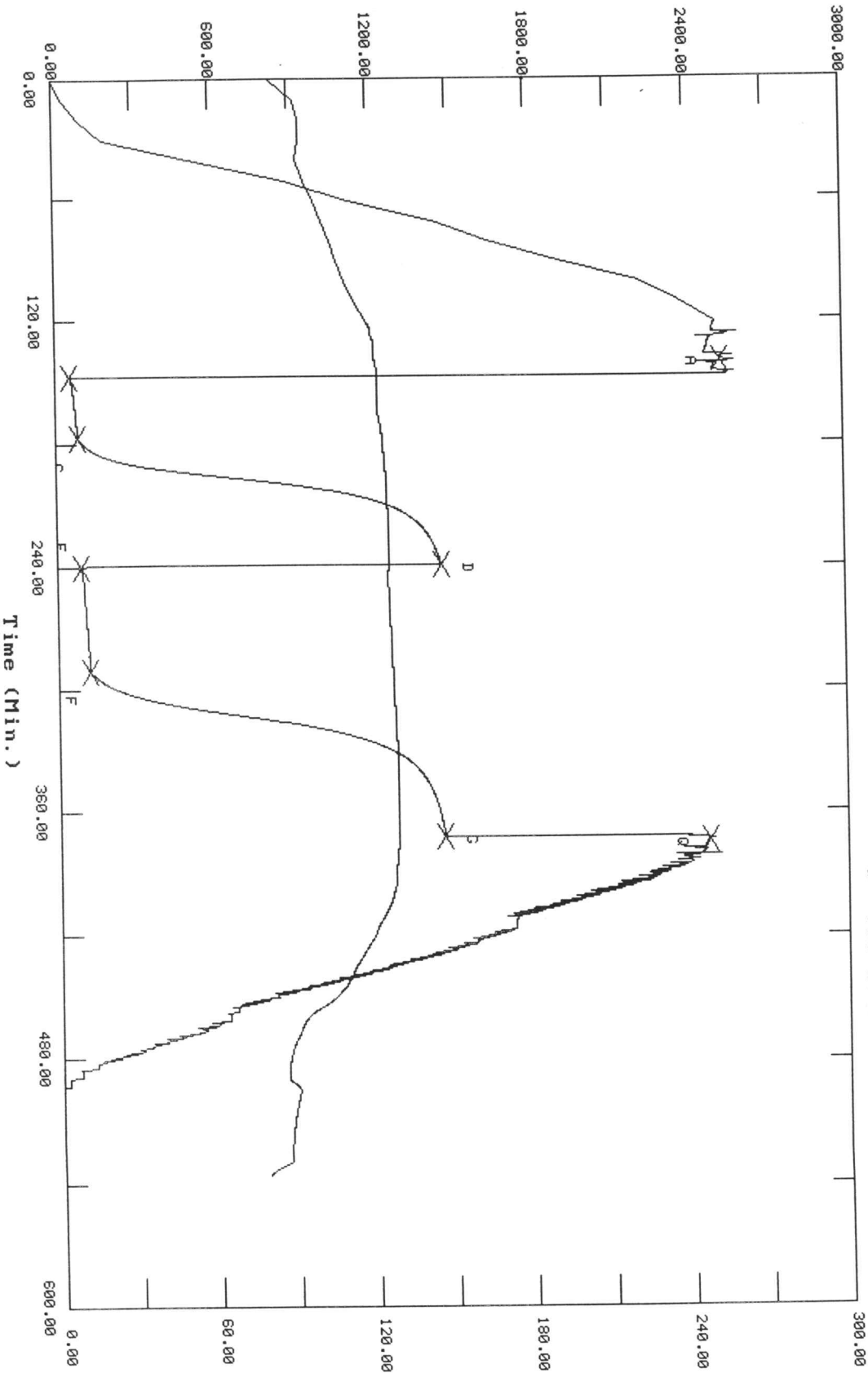
| | |
|----------------------|------|
| P.O. SUB top of tool | 5167 |
| C.O. SUB 1' | 5168 |
| S.I. TOOL 5' | 5173 |
| HMV 5' | 5178 |
| JARS 5' | 5183 |
| SAFETY JOINT 2' | 5185 |
| PACKER 5' | 5190 |
| PACKER 5' | 5194 |
| DEPTH 5194 | |
| STUBB 1' | 5195 |
| ANCHOR 1' perf | 5196 |
| 1'c/o sub | 5197 |
| 61' DP | 5257 |
| 1' c/o sub | 5258 |
| Alpine Rec. | 5258 |
| T.C. DEPTH | |
| 22' perf | 5280 |
| AK1 Rec. | 5285 |
| BULLNOSE 5' BP | 5285 |
| T.D. 5285 | |

9820 DST#3 MLB Schnellbacher #3-4 Chesapeake Operating Co.

TEST HISTORY

Flag Points

| Time (Min.) | Pressure (PSig) |
|-------------|-----------------|
| R: 0.00 | 2531.79 |
| B: 0.00 | 54.42 |
| C: 30.00 | 83.74 |
| D: 62.00 | 1462.03 |
| E: 0.00 | 87.34 |
| F: 51.25 | 118.30 |
| G: 80.75 | 1466.00 |
| O: 0.00 | 2470.76 |

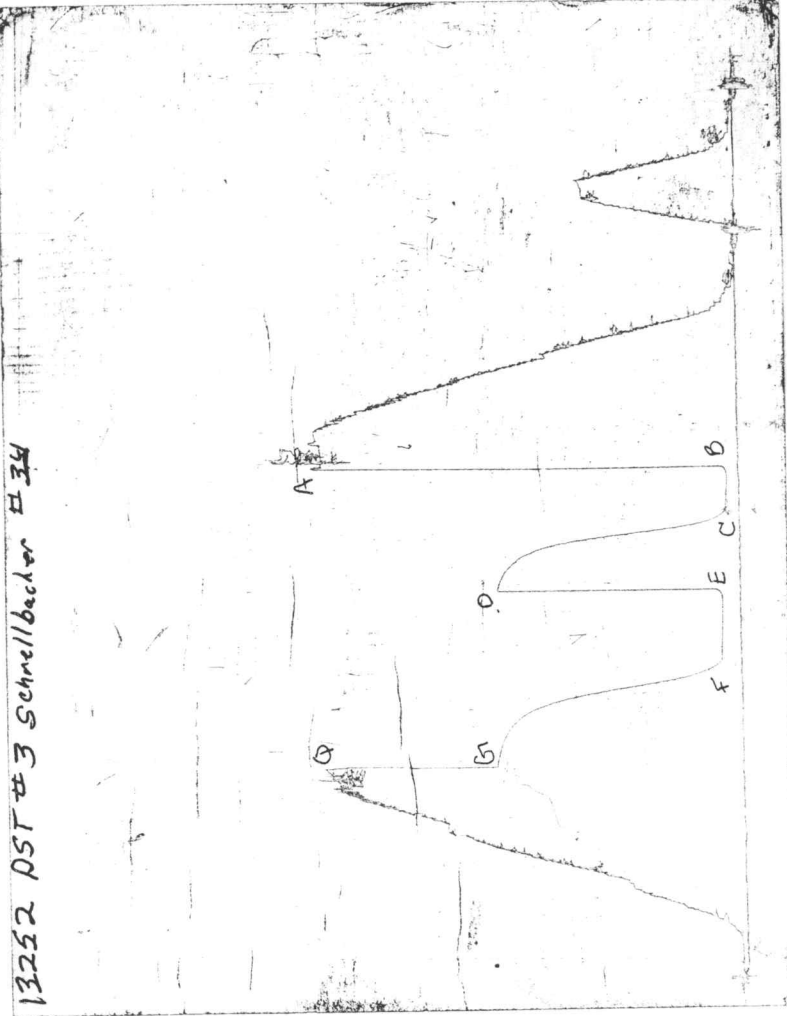


Pressure (PSig)

Time (Min.)

Temperature (DEG F)

CHART PAGE



This is a photocopy of the actual AK-1 recorder chart

TRILOBITE TESTING L.L.C.

OPERATOR : Chesapeake Operating Co. DATE 5-15-98
 WELL NAME: MLP Schnellbacher #3-4 KB 2986.00 ft TICKET NO: 99821 DST #4
 LOCATION : 4-30s-34w Haskell KS GR 2974.00 ft FORMATION: Chester
 INTERVAL : 53230.00 To 5410.00 ft TD 5410.00 ft TEST TYPE: CONVENTIONAL

RECORDER DATA

| Mins | | Field | 1 | 2 | 3 | 4 | TIME DATA----- |
|------|---|-------------|--------|--------|--------|---------|----------------------|
| PF | 0 | Rec. | 13252 | 13252 | 3026 | | PF Fr. mis to run hr |
| SI | 0 | Range(Psi) | 4550.0 | 4550.0 | 4995.0 | 0.0 0.0 | IS Fr. to hr |
| SF | 0 | Clock(hrs) | 12hr | 12hr | elect | | SF Fr. to hr |
| FS | 0 | Depth(ft) | 5410.0 | 5410.0 | 5388.0 | 0.0 0.0 | FS Fr. to hr |

| | Field | 1 | 2 | 3 | 4 | |
|----------------|--------|--------|--------|-----|-----|-------------------------------|
| A. Init Hydro | 2630.0 | 2630.0 | 2622.0 | 0.0 | 0.0 | T STARTED 2445 hr |
| B. First Flow | 0.0 | 0.0 | 0.0 | 0.0 | 0.0 | T ON BOTM 0235 hr |
| B1. Final Flow | 0.0 | 0.0 | 0.0 | 0.0 | 0.0 | T OPEN 0236 hr |
| C. In Shut-in | 0.0 | 0.0 | 0.0 | 0.0 | 0.0 | T PULLED 0245 hr |
| D. Init Flow | 0.0 | 0.0 | 0.0 | 0.0 | 0.0 | T OUT 0530 hr |
| E. Final Flow | 0.0 | 0.0 | 0.0 | 0.0 | 0.0 | |
| F. Fl Shut-in | 0.0 | 0.0 | 0.0 | 0.0 | 0.0 | TOOL DATA----- |
| G. Final Hydro | 2481.0 | 2481.0 | 2572.0 | 0.0 | 0.0 | Tool Wt. 1800.00 lbs |
| Inside/Outside | 0 | 0 | I | | | Wt Set On Packer 26000.00 lbs |

RECOVERY

| | | | | | |
|-----------|-------------|-------------------|---------------|-----------------|--------------|
| Tot Fluid | 0.00 ft of | 0.00 ft in DC and | 0.00 ft in DP | Unseated Str Wt | 70000.00 lbs |
| 0.00 | ft of | | | Bot Choke | 0.75 in |
| 0.00 | ft of | | | Hole Size | 7.78 in |
| 0.00 | ft of | | | D Col. ID | 2.25 in |
| 0.00 | ft of | | | D. Pipe ID | 3.38 in |
| 0.00 | ft of | | | D.C. Length | 210.00 ft |
| 0.00 | ft of | | | D.P. Length | 5109.00 ft |
| 0.00 | ft of | | | | |
| SALINITY | 0.00 P.P.M. | A.P.I. Gravity | 0.00 | | |

BLOW DESCRIPTION

No packer seat pulled loose tried again
 same result misrun.

MUD DATA-----

| | |
|----------------|--------------|
| Mud Type | chemical |
| Weight | 9.20 lb/c |
| Vis. | 49.00 S/L |
| W.L. | 10.80 in3 |
| F.C. | 0.00 in |
| Mud Drop Y | 0.0 ft |
| Amt. of fill | 0.00 ft |
| Btm. H. Temp. | 0.00 F |
| Hole Condition | |
| % Porosity | 10.00 |
| Packer Size | 6.75 in |
| No. of Packers | 0 |
| Cushion Amt. | 0.00 |
| Cushion Type | |
| Reversed Out N | |
| Tool Chased N | |
| Tester | Scott Bugbee |
| Co. Rep. | Doug Davis |
| Contr. | Murfin |
| Rig # | 20 |
| Unit # | |
| Pump T. | |

SAMPLES:
 SENT TO:

Test Successful: N

*** TOOL DIAGRAM *** CONVENTIONAL

| | | |
|--|----------------------|------|
| WELL NAME: MLP Schnellbacher #3-4 | P.O. SUB top of tool | 5296 |
| | C.O. SUB 1' | 5297 |
| LOCATION : 4-30s-34w Haskell KS | S.I. TOOL 5' | 5302 |
| TICKET No. 99821 D.S.T. No. 4 DATE 5-15-98 | | |
| TOTAL TOOL TO BOTTOM OF TOP PACKERS 27 | HMV 5' | 5307 |
| INTERVAL TOOL | | |
| BOTTOM PACKERS AND ANCHOR 24 | JARS 5' | 5312 |
| TOTAL TOOL 51 | | |
| DRILL COLLAR ANCHOR IN INTERVAL | | |
| D.C. ANCHOR STND.Stands Single Total | SAFETY JOINT 2' | 5314 |
| D.P. ANCHOR STND.Stands 1 Single Total 61 | PACKER 5' | 5319 |
| TOTAL ASSEMBLY 112 | PACKER 5' | 5323 |
| D.C. ABOVE TOOLS.Stands3 Single 1 Total 210 | DEPTH 5323 | |
| D.P. ABOVE TOOLS.Stands82 Single 1 Total 5109 | STUBB 1' | 5324 |
| TOTAL DRILL COLLARS DRILL PIPE & TOOLS .. 5431 | ANCHOR 1'perf | 5325 |
| | 1'c/o sub | 5326 |
| TOTAL DEPTH 5410 | | |
| TOTAL DRILL PIPE ABOVE K.B. 21 | 61'DP | 5387 |
| REMARKS: | 1' c/o sub | 5388 |
| | T.C. | |
| | DEPTH | |
| | PACKER Alpine Rec. | 5388 |
| | PACKER 17' perf | 5405 |
| | AK1 Rec. | 5410 |
| | BULLNOSE | |
| | T.D. 5'BP | 5410 |

9821 DST#4 MLB Schnellbacher #3-4 Chesapeake Operating Co.

TEST HISTORY

Flag Points
t (Min.) P (PSig)
R: 0.00 2622.01
Q: 0.00 2572.66

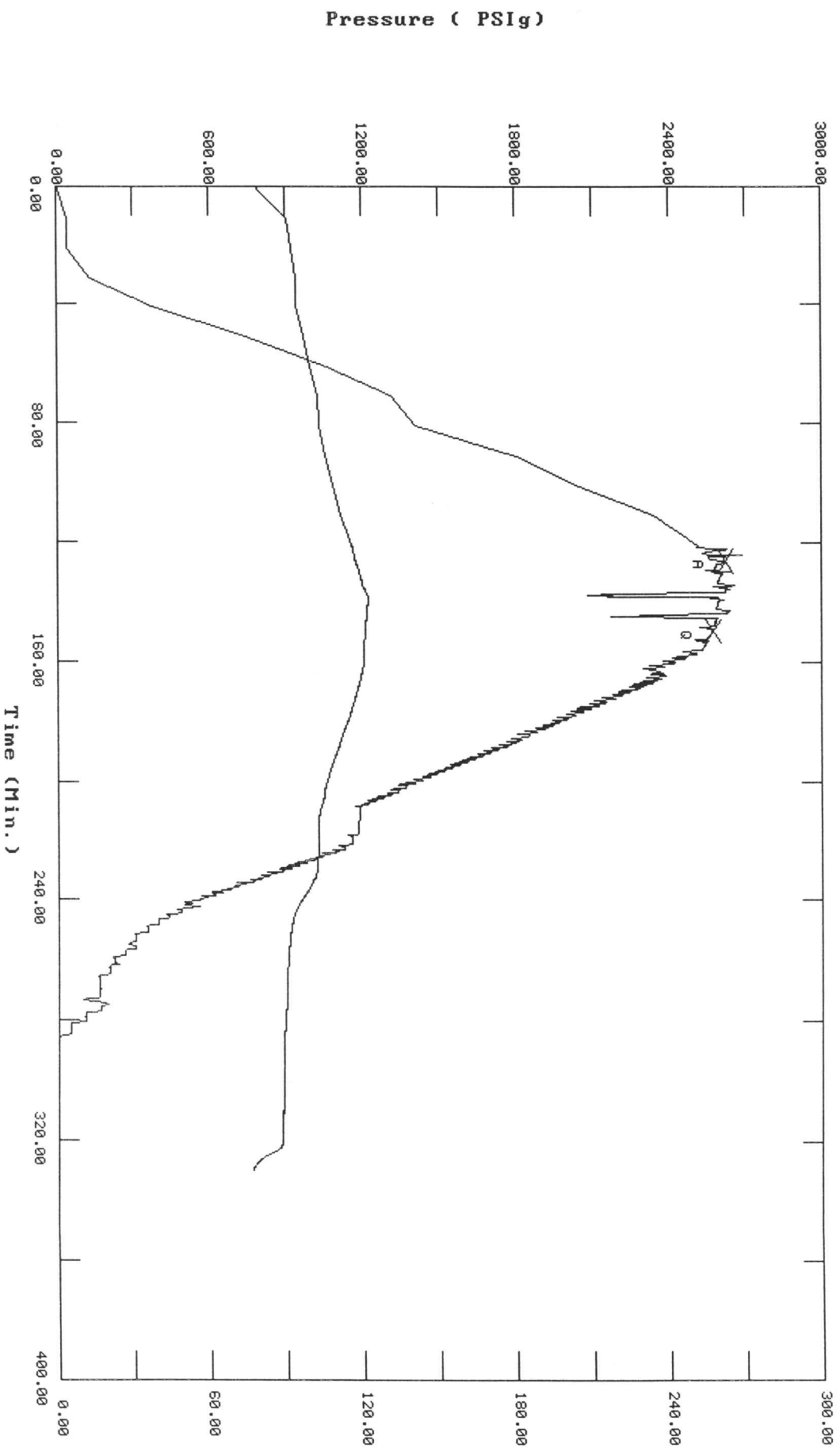
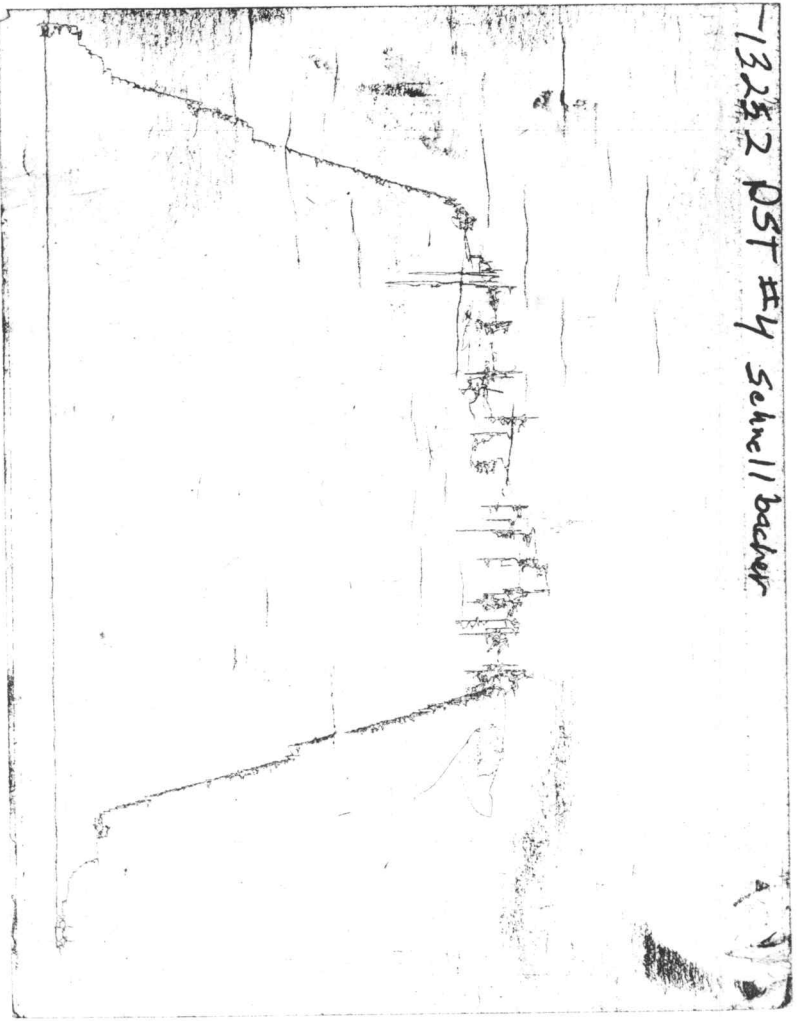


CHART PAGE



This is a photocopy of the actual AK-1 recorder chart

TRILOBITE TESTING L.L.C.

OPERATOR : Chesapeake Operating Co. DATE 5-16-98
 WELL NAME: MLP Schnellbacher #3-4 KB 2986.00 ft TICKET NO: 9822 DST #5
 LOCATION : 4-30s-34w Haskell KS GR 2974.00 ft FORMATION: Chester
 INTERVAL : 5351.00 To 5500.00 ft TD 5500.00 ft TEST TYPE: CONVENTIONAL

RECORDER DATA

| Mins | Field | 1 | 2 | 3 | 4 | TIME DATA----- |
|-------|-------------|--------|--------|--------|-----|----------------------------|
| PF 30 | Rec. | 13252 | 13252 | 3026 | | PF Fr. 0753 to 0823 hr |
| SI 60 | Range(Psi) | 4550.0 | 4550.0 | 4995.0 | 0.0 | 0.0 IS Fr. 0823 to 0923 hr |
| SF 45 | Clock(hrs) | 12hr | 12hr | elect | | SF Fr. 0923 to 1005 hr |
| FS 90 | Depth(ft) | 5500.0 | 5500.0 | 5485.0 | 0.0 | 0.0 FS Fr. 1005 to 1135 hr |

| | Field | 1 | 2 | 3 | 4 | |
|----------------|--------|--------|--------|-----|-----|-------------------------------|
| A. Init Hydro | 2721.0 | 2714.0 | 2709.0 | 0.0 | 0.0 | T STARTED 0520 hr |
| B. First Flow | 195.0 | 209.0 | 142.0 | 0.0 | 0.0 | T ON BOTM 0752 hr |
| Bl. Final Flow | 241.0 | 245.0 | 233.0 | 0.0 | 0.0 | T OPEN 0753 hr |
| C. In Shut-in | 1452.0 | 1461.0 | 1450.0 | 0.0 | 0.0 | T PULLED 1135 hr |
| D. Init Flow | 311.0 | 311.0 | 226.0 | 0.0 | 0.0 | T OUT 1430 hr |
| E. Final Flow | 357.0 | 339.0 | 349.0 | 0.0 | 0.0 | |
| F. Fl Shut-in | 1463.0 | 1455.0 | 1450.0 | 0.0 | 0.0 | TOOL DATA----- |
| G. Final Hydro | 2458.0 | 2437.0 | 2472.0 | 0.0 | 0.0 | Tool Wt. 1800.00 lbs |
| Inside/Outside | 0 | 0 | I | | | Wt Set On Packer 24000.00 lbs |
| | | | | | | Wt Pulled Loose 82000.00 lbs |
| | | | | | | Initial Str Wt 68000.00 lbs |
| | | | | | | Unseated Str Wt 72000.00 lbs |
| | | | | | | Bot Choke 0.75 in |
| | | | | | | Hole Size 7.78 in |
| | | | | | | D Col. ID 2.25 in |
| | | | | | | D. Pipe ID 3.38 in |
| | | | | | | D.C. Length 210.00 ft |
| | | | | | | D.P. Length 5139.00 ft |

RECOVERY

Tot Fluid 640.00 ft of 210.00 ft in DC and 430.00 ft in DP
 310.00 ft of mud 100%
 120.00 ft of oil specked gas cut mud 1%G. 99%mud
 210.00 ft of Gassy slightly oil cut mud 28%G. 2% O
 0.00 ft of 70% mud
 0.00 ft of
 0.00 ft of
 0.00 ft of
 0.00 ft of
 SALINITY 0.00 P.P.M. A.P.I. Gravity 0.00

MUD DATA-----

Mud Type chemical
 Weight 9.30 lb/c
 Vis. 52.00 S/L
 W.L. 9.60 in3
 F.C. 0.00 in
 Mud Drop N
 Amt. of fill 0.00 ft
 Btm. H. Temp. 140.00 F
 Hole Condition good
 % Porosity 14.00
 Packer Size 6.75 in
 No. of Packers 2
 Cushion Amt. 0.00
 Cushion Type
 Reversed Out N
 Tool Chased N
 Tester Scott Bugbee
 Co. Rep. Doug Davis
 Contr. Murfin
 Rig # 20
 Unit #
 Pump T.

BLOW DESCRIPTION

Initial Flow:
 Fair blow built to strong blow bottom of bucket in 15 mins.
 Initial Shut-in:
 Bled off 2", no blow back
 Final Flow:
 Strong blow bottom of bucket as soon as tool opened
 Final Shut-in:
 Bled off 2", gas to surface in 6 mins gas will burn

SAMPLES:
 SENT TO:

Test Successful: Y

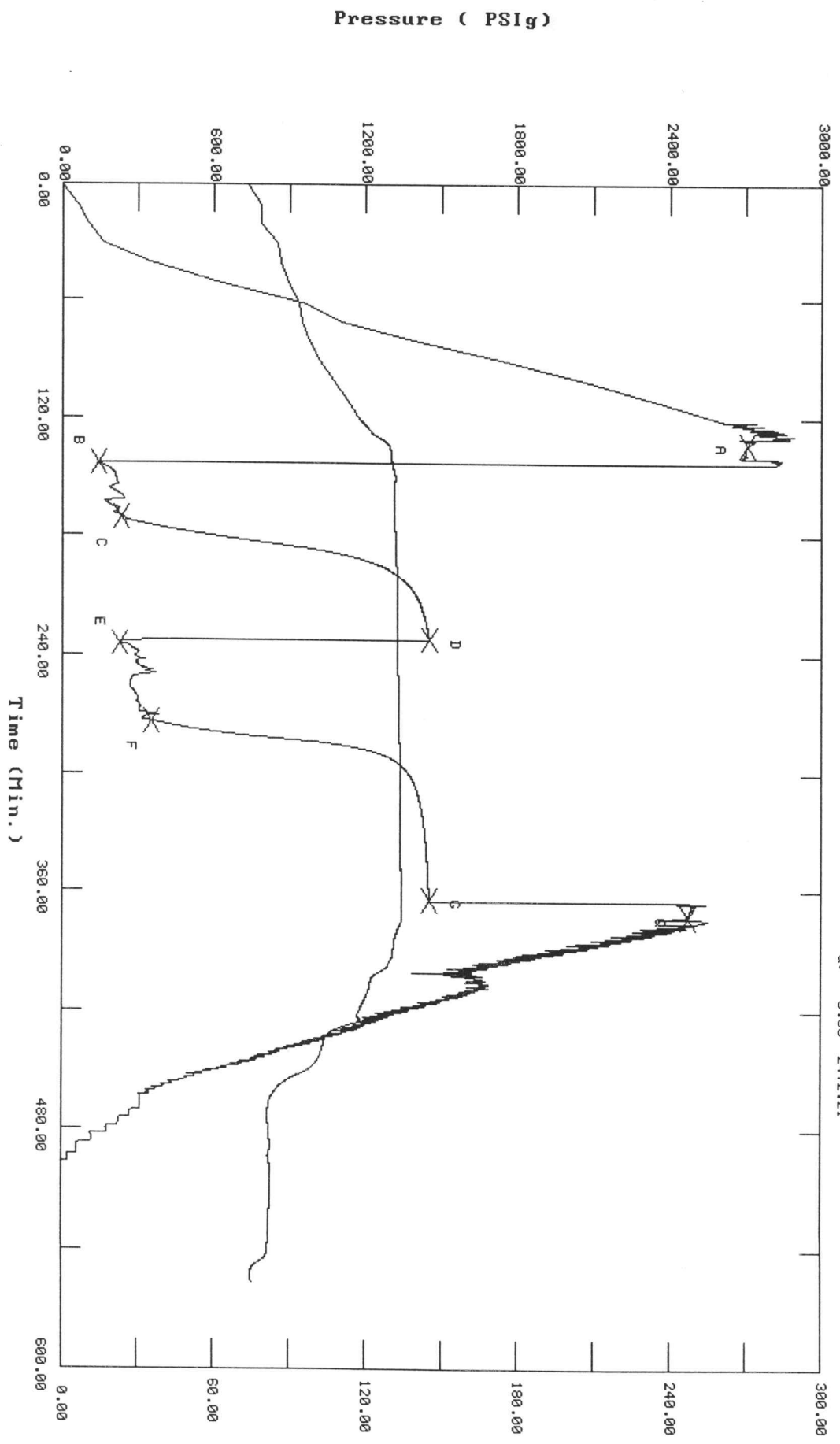
*** TOOL DIAGRAM *** CONVENTIONAL

| | | |
|--|----------------------|------|
| WELL NAME: MLP Schnellbacher #3-4 | P.O. SUB top of tool | 5324 |
| | C.O. SUB 1' | 5325 |
| LOCATION : 4-30s-34w Haskell KS | S.I. TOOL 5' | 5330 |
| TICKET No. 9822 D.S.T. No. 5 DATE 5-16-98 | | |
| TOTAL TOOL TO BOTTOM OF TOP PACKERS 27 | | |
| INTERVAL TOOL | HMV 5' | 5335 |
| BOTTOM PACKERS AND ANCHOR 23 | JARS 5' | 5340 |
| TOTAL TOOL 50 | | |
| DRILL COLLAR ANCHOR IN INTERVAL | | |
| D.C. ANCHOR STND.Stands Single Total | SAFETY JOINT 2' | 5342 |
| D.P. ANCHOR STND.Stands 2 Single Total 125 | PACKER 5' | 5347 |
| TOTAL ASSEMBLY 175 | PACKER 5' | 5351 |
| D.C. ABOVE TOOLS.Stands3 Single 1 Total 210 | DEPTH 5351 | |
| D.P. ABOVE TOOLS.Stands85 Single 1 Total 5139 | STUBB 1' | 5352 |
| | ANCHOR 1' perf | 5353 |
| TOTAL DRILL COLLARS DRILL PIPE & TOOLS .. 5524 | c/o sub | 5354 |
| TOTAL DEPTH 5500 | | |
| TOTAL DRILL PIPE ABOVE K.B. 24 | 125' DP | 5479 |
| REMARKS: | 1' c/o sub | 5480 |
| | | |
| | T.C. | |
| | DEPTH | |
| | Alpine Rec | 5485 |
| | PACKER 5' PU sub | 5485 |
| | | |
| | 10' perf | 5495 |
| | AK1 Rec | 5500 |
| | BULLNOSE | |
| | T.D. 5' | 5500 |

TEST HISTORY
 9822 DST #5 MLP Schnellbacher #3-4 Chesapeake Operating Co.

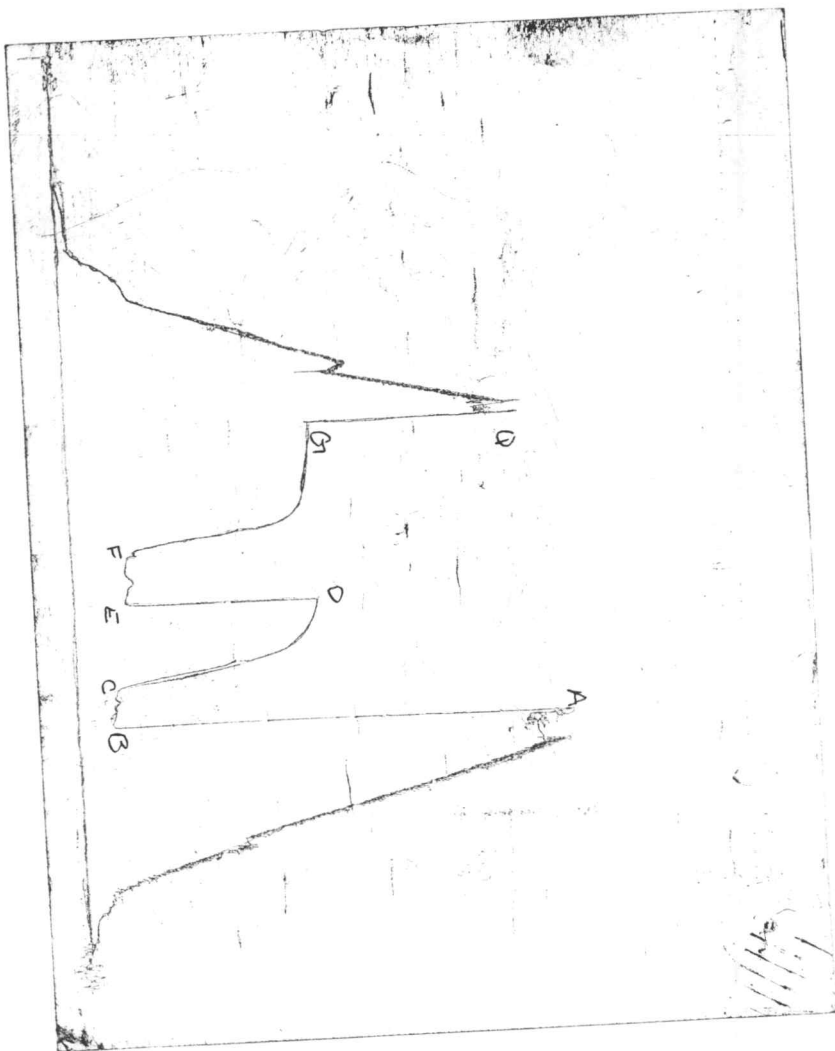
Flag Points

| t (Min.) | P (PSig) |
|----------|----------|
| R: 0.00 | 2769.25 |
| B: 0.00 | 142.54 |
| C: 28.00 | 233.32 |
| D: 61.50 | 1450.10 |
| E: 0.00 | 226.23 |
| F: 39.00 | 349.68 |
| G: 91.00 | 1450.48 |
| Q: 0.00 | 2472.21 |



Temperature (DEG F)

CHART PAGE



This is a photocopy of the actual AK-1 recorder chart