

15-187-20913

27-30s-40w

**Well Name:** Herrick 1-927  
**Company:** Presco Western  
**Location:** 27-30s-40w  
Stanton County Kansas  
**Date:** 12-10-98

RECEIVED  
KANSAS CORPORATION COMMISSION

FEB 12 1999

CONSERVATION DIVISION  
WICHITA, KS

TRILOBITE TESTING L.L.C.

OPERATOR : Presco Western  
 WELL NAME: Herrick 1-927  
 LOCATION : 27-30s-40w Stanton co KS  
 INTERVAL : 2961.00 To 2985.00 ft

DATE 12-03-98  
 KB 3282.00 ft  
 GR 3272.00 ft  
 TD 2985.00 ft

TICKET NO: 11709  
 FORMATION: Wabaunsee  
 TEST TYPE: CONVENTIONAL

RECORDER DATA

Mins		Field	1	2	3	4	TIME DATA-----
PF 10	Rec.	10333	10333	3026			PF Fr. 2124 to 2134 hr
SI 60	Range(Psi )	4050.0	4050.0	4995.0	0.0	0.0	IS Fr. 2134 to 2234 hr
SF 120	Clock(hrs)	12hr	12hr	elect			SF Fr. 2234 to 0034 hr
FS 120	Depth(ft )	2985.0	2985.0	2970.0	0.0	0.0	FS Fr. 0034 to 0234 hr

	Field	1	2	3	4	
A. Init Hydro	1416.0	1427.0	1390.0	0.0	0.0	T STARTED 1920 hr
B. First Flow	61.0	72.0	26.0	0.0	0.0	T ON BOTM 2123 hr
Bl. Final Flow	61.0	72.0	47.0	0.0	0.0	T OPEN 2124 hr
C. In Shut-in	538.0	536.0	544.0	0.0	0.0	T PULLED 0234 hr
D. Init Flow	111.0	97.0	40.0	0.0	0.0	T OUT 0355 hr
E. Final Flow	111.0	97.0	85.0	0.0	0.0	
F. Fl Shut-in	518.0	511.0	518.0	0.0	0.0	TOOL DATA-----
G. Final Hydro	1385.0	1401.0	1367.0	0.0	0.0	Tool Wt. 1700.00 lbs
Inside/Outside	0	0	I			Wt Set On Packer 24000.00 lbs
						Wt Pulled Loose 78000.00 lbs
						Initial Str Wt 52000.00 lbs
						Unseated Str Wt 52000.00 lbs
						Bot Choke 0.78 in
						Hole Size 7.78 in
						D Col. ID 2.25 in
						D. Pipe ID 3.38 in
						D.C. Length 349.00 ft
						D.P. Length 2603.00 ft

RECOVERY

Tot Fluid 130.00 ft of 130.00 ft in DC and 0.00 ft in DP  
 130.00 ft of Mud 100%  
 0.00 ft of  
 0.00 ft of  
 0.00 ft of  
 0.00 ft of  
 0.00 ft of  
 0.00 ft of  
 0.00 ft of

SALINITY 0.00 P.P.M. A.P.I. Gravity 0.00

BLOW DESCRIPTION

Initial Flow:  
 Bottom of bucket in 1 1/2 mis.  
 Fair blow

Initial Shut-in:  
 No blow back

Final Flow:  
 Bottom of bucket as soon as tool  
 opened gas to surface in 10 mins.  
 Gas will butn

Final Shut-in:  
 No blow back

MUD DATA-----

Mud Type	chemical
Weight	8.80 lb/cf
Vis.	33.00 S/L
W.L.	18.60 in3
F.C.	0.00 in
Mud Drop Y	15.0 ft
Amt. of fill	2.00 ft
Btm. H. Temp.	100.00 F
Hole Condition	good
% Porosity	0.00
Packer Size	6.75 in
No. of Packers	2
Cushion Amt.	0.00
Cushion Type	
Reversed Out N	
Tool Chased N	
Tester	Scott Bugbee
Co. Rep.	Austin Garner
Contr.	Cheyenne
Rig #	3
Unit #	
Pump T.	

SAMPLES: Yes  
 SENT TO: Caraway Analytical

Test Successful: Y

GAS RECOVERY  
-----

COMPANY: Presco Western

DATE: 12-03-98

WELL NAME: Herrick 1-927

KB Elev: 3282.00 ft TICKET #11709 DST #1

WELL LOCATION: 27-30s-40w Stanton co KS

GR Elev: 3272.00 ft FORMATION: Wabaunsee

INTERVAL Fr.: 2961.00 To 2985.00 T.D.: 2985.00 ft TEST TYPE: CONVENTIONAL

GAS RECOVERY MEASURED WITH Merla

\*\*\* GAS RATES FOR FLOW #2

Time (min)	Orifice (in)	Pressure (Psi)	H2O (in)	Rate (cf/d)
15	1.00	6	0	353000.0
20	0.75	10	0	259000.0
25	0.75	10	0	259000.0
30	0.75	10	0	259000.0
40	0.75	10	0	259000.0
45	0.75	12	0	288000.0
50	0.75	12	0	288000.0
55	0.75	14	0	317000.0
60	0.75	14	0	317000.0
70	0.75	16	0	344000.0
80	0.75	16	0	344000.0
90	0.75	16	0	344000.0
100	0.75	17	0	357000.0
110	0.75	18	0	370000.0
120	0.75	18	0	370000.0

\*\*\* TOOL DIAGRAM \*\*\* CONVENTIONAL

WELL NAME: Herrick 1-927

LOCATION : 27-30s-40w Stanton co KS

TICKET No. 11709 D.S.T. No. 1 DATE 12-03-98

TOTAL TOOL TO BOTTOM OF TOP PACKERS ..... 27

INTERVAL TOOL .....

BOTTOM PACKERS AND ANCHOR ..... 24

TOTAL TOOL ..... 51

DRILL COLLAR ANCHOR IN INTERVAL .....

D.C. ANCHOR STND.Stands Single Total

D.P. ANCHOR STND.Stands Single Total

TOTAL ASSEMBLY .....

D.C. ABOVE TOOLS.Stands6 Single Total 349

D.P. ABOVE TOOLS.Stands42 Single 1 Total 2603

TOTAL DRILL COLLARS DRILL PIPE & TOOLS .. 3003

TOTAL DEPTH ..... 2985

TOTAL DRILL PIPE ABOVE K.B. .... 18

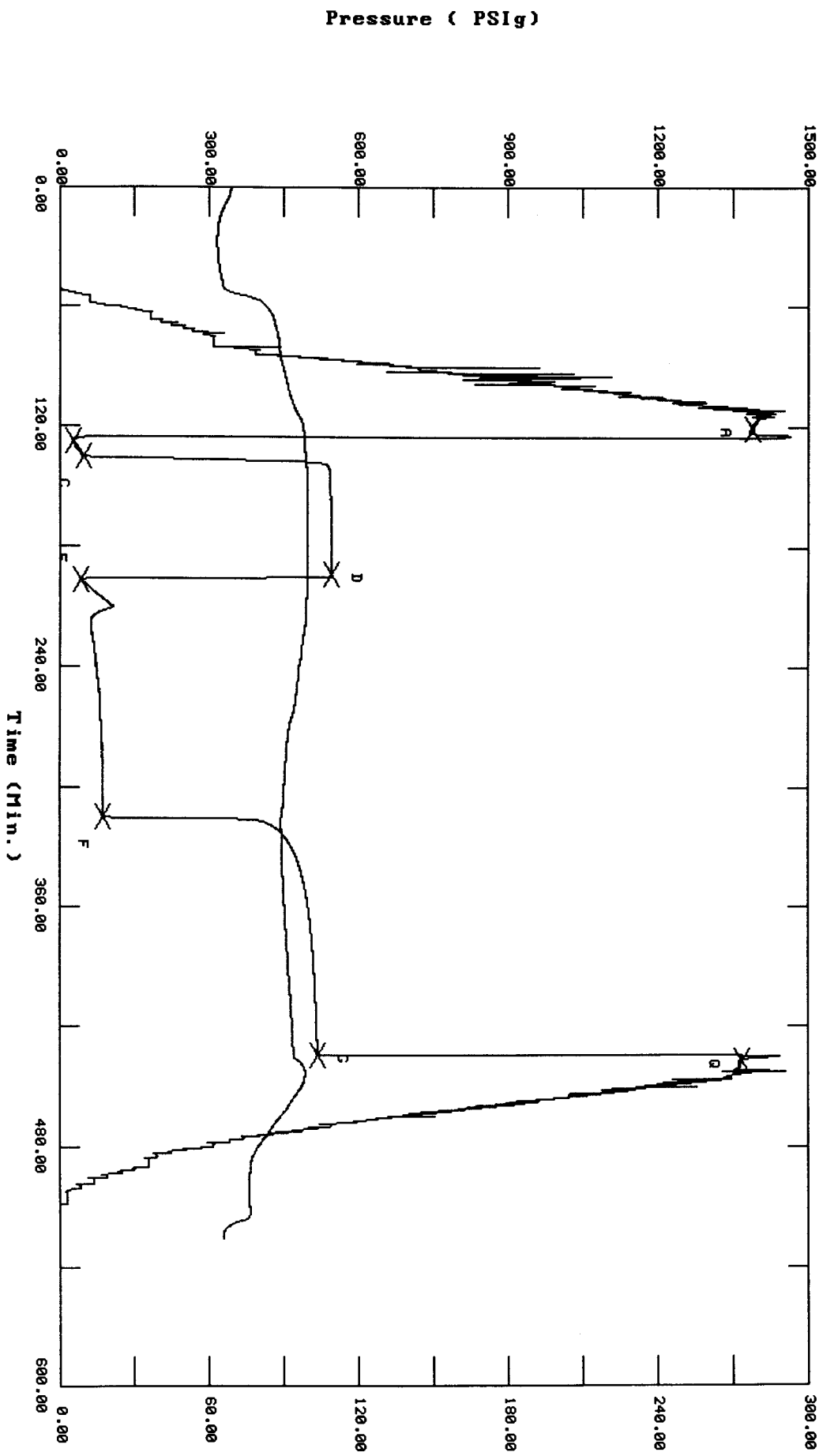
REMARKS:

P.O. SUB top of tool	2934
C.O. SUB 1'	2935
S.I. TOOL 5'	2940
HMV 5'	2945
JARS 5'	2950
SAFETY JOINT 2'	2952
PACKER 5'	2957
PACKER 5'	2961
DEPTH 2961	
STUBB 1'	2962
ANCHOR 3'	2965
Alpine Rec.	2970
5' PU sub	2970
T.C. DEPTH	
10' perf	2980
Ak1 Rec.	2985
BULLNOSE	
T.D. 5'	2985

TEST HISTORY  
 11709 DST#1 HERRICK 1-927 PRESCO WESTERN

Flag Points

t(Min.)	P( PSig )
R: 0.00	1390.54
B: 0.00	26.14
C: 8.00	47.39
D: 58.50	544.80
E: 0.00	40.80
F: 118.00	85.00
G: 119.75	518.05
Q: 0.00	1367.76

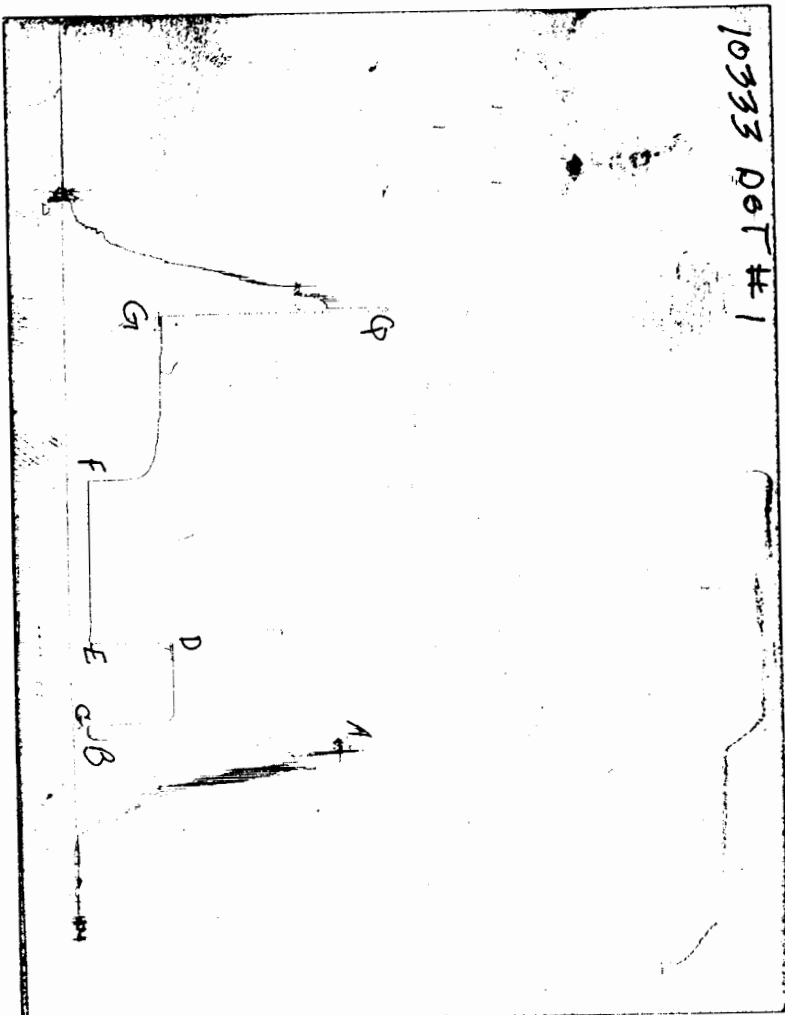


Temperature (DEG F)

Pressure ( PSig )

Time (Min.)

CHART PAGE



This is a photocopy of the actual AK-1 recorder chart

# TRILOBITE TESTING L.L.C.

P.O. Box 362 • Hays, Kansas 67601

## Test Ticket

No 11709

Well Name & No. Herrick 1-927 Test No. #1 Date 12-3-98  
 Company Presco Western Zone Tested Wabgansee  
 Address 1775 Sherman St. Suite 2950 Denver Colo. 80203 Elevation 3282 KB 3272 GL  
 Co. Rep / Geo. Austin Garner Cont. Cheyenne Rig #3 Est. Ft. of Pay      Por.      %  
 Location: Sec. 27 Twp. 30S Rge. 140W Co. Stanton State Ks  
 No. of Copies      Distribution Sheet (Y, N)      Turnkey (Y, N)      Evaluation (Y, N)     

Interval Tested 2961-2985 Initial Str Wt./Lbs. 52,000 Unseated Str Wt./Lbs. 52,000  
 Anchor Length 24' Wt. Set Lbs. 24,000 Wt. Pulled Loose/Lbs. 78,000  
 Top Packer Depth 2957 Tool Weight 1700  
 Bottom Packer Depth 2961 Hole Size — 7 7/8"  Rubber Size — 6 3/4"   
 Total Depth 2985 Wt. Pipe Run      Drill Collar Run 349 <sup>6 sides</sup>  
 Mud Wt. 8.8 LCM 3 Vis. 33 WL 18.6 Drill Pipe Size 4 1/2 XH Ft. Run 2603 <sup>42 1/2'</sup>  
 Blow Description 1st open B.O.B. in 1 1/2 min. Fair blow  
No blow back  
B.O.B. as soon as tool opened GTS in 10 min. Gas will burn  
No blow back

Recovery — Total Feet 130 GIP GTS Ft. in DC 130 Ft. in DP       
 Rec. 130 Feet Of mud %gas      %oil      %water 100 %mud       
 Rec.      Feet Of      %gas      %oil      %water      %mud       
 Rec.      Feet Of      %gas      %oil      %water      %mud       
 Rec.      Feet Of      %gas      %oil      %water      %mud       
 Rec.      Feet Of      %gas      %oil      %water      %mud       
 BHT 100 °F Gravity      °API D@      °F Corrected Gravity      °API       
 RW      @      °F Chlorides      ppm Recovery Chlorides 2300 ppm System

	AK-1	Alpine	PSI	Recorder No.	T-On Location
(A) Initial Hydrostatic Mud	1416	1390		3026	5:10 P.M.
(B) First Initial Flow Pressure	61	26	PSI	(depth) 2970	T-Started 7:20 P.M.
(C) First Final Flow Pressure	61	47	PSI	Recorder No. 10333	T-Open 9:24 P.M.
(D) Initial Shut-In Pressure	<del>538</del>	544	PSI	(depth) 2985	T-Pulled <del>2:34</del> A.M.
(E) Second Initial Flow Pressure	111	40	PSI	Recorder No. <u>    </u>	T-Out 3:55 A.M.
(F) Second Final Flow Pressure	111	85	PSI	(depth) <u>    </u>	T-Off Location <u>    </u>
(G) Final Shut-in Pressure	518	518	PSI	Initial Opening 10	Test <input checked="" type="checkbox"/>
(Q) Final Hydrostatic Mud	1385	1347	PSI	Initial Shut-in 60	Jars <input checked="" type="checkbox"/>
				Final Flow 120	Safety Joint <input checked="" type="checkbox"/>
				Final Shut-in 120	Straddle <u>    </u>

TRILOBITE TESTING L.L.C. SHALL NOT BE LIABLE FOR DAMAGE OF ANY KIND OF THE PROPERTY OR PERSONNEL OF THE ONE FOR WHOM A TEST IS MADE, OR FOR ANY LOSS SUFFERED OR SUSTAINED, DIRECTLY OR INDIRECTLY, THROUGH THE USE OF ITS EQUIPMENT, OR ITS STATEMENTS OR OPINION CONCERNING THE RESULTS OF ANY TEST. TOOLS LOST OR DAMAGED IN THE HOLE SHALL BE PAID FOR AT COST BY THE PARTY FOR WHOM THE TEST IS MADE.

Approved By Austin Garner  
 Our Representative Scott Bugbee

Circ. Sub   
 Sampler       
 Extra Packer       
 Elec. Rec.   
 Mileage       
 Other       
 TOTAL PRICE \$

TRILOBITE TESTING L.L.C.

OPERATOR : Presco Western  
 WELL NAME: Herrick 1-927  
 LOCATION : 27-30s-40w Stanton co KS  
 INTERVAL : 4315.00 To 4350.00 ft

DATE 12-6-98  
 KB 3282.00 ft  
 GR 3272.00 ft  
 TD 4390.00 ft

TICKET NO: 11710  
 FORMATION: Marmaton  
 TEST TYPE: CONVENTIONALSTRADDLE

DST #2

RECORDER DATA

Mins	Field	1	2	3	4	TIME DATA-----
PF 10 Rec.	13252	13252	3026	10333		PF Fr. 0114 to 0124 hr
SI 60 Range(Psi )	4550.0	4550.0	4322.0	4050.0	0.0	IS Fr. 0124 to 0224 hr
SF 60 Clock(hrs)	12hr	12hr	elect	12hr		SF Fr. 0224 to 0424 hr
FS 120 Depth(ft )	4346.0	4346.0	4322.0	4390.0	0.0	FS Fr. 0424 to 0624 hr

	Field	1	2	3	4	
A. Init Hydro	2059.0	2029.0	2060.0	2010.0	0.0	T STARTED 2302 hr
B. First Flow	34.0	30.0	24.0	0.0	0.0	T ON BOTM 0113 hr
B1. Final Flow	69.0	63.0	104.0	0.0	0.0	T OPEN 0114 hr
C. In Shut-in	1086.0	1077.0	1102.0	0.0	0.0	T PULLED 0524 hr
D. Init Flow	126.0	136.0	108.0	0.0	0.0	T OUT 0800 hr
E. Final Flow	253.0	252.0	264.0	0.0	0.0	
F. Fl Shut-in	1086.0	1069.0	1069.0	0.0	0.0	TOOL DATA-----
G. Final Hydro	2002.0	2009.0	2040.0	1970.0	0.0	Tool Wt. 1800.00 lbs
Inside/Outside	0	0	I	0		Wt Set On Packer 30000.00 lbs
						Wt Pulled Loose 90000.00 lbs
						Initial Str Wt 62000.00 lbs
						Unseated Str Wt 64000.00 lbs
						Bot Choke 0.78 in
						Hole Size 7.78 in
						D Col. ID 2.25 in
						D. Pipe ID 3.38 in
						D.C. Length 349.00 ft
						D.P. Length 3961.00 ft

RECOVERY

Tot Fluid 569.00 ft of 349.00 ft in DC and 220.00 ft in DP  
 89.00 ft of watery mud 20% Water 80% Mud  
 360.00 ft of muddy water 80% Water 20% Mud  
 120.00 ft of mud cut water 90% Water 10% Mud  
 0.00 ft of  
 0.00 ft of  
 0.00 ft of  
 0.00 ft of  
 0.00 ft of

SALINITY 500.00 P.P.M. A.P.I. Gravity 0.00

MUD DATA-----

Mud Type	chemical
Weight	9.20 lb/cf
Vis.	44.00 S/L
W.L.	9.10 in3
F.C.	0.00 in
Mud Drop Y	10.0 ft

BLOW DESCRIPTION

Initial Flow:  
 Weak blow built to 4 1/2"  
 Initial Shut-in:  
 No blow back  
 Final Flow:  
 Weak blow built to 5" died to 4"  
 Final Shut-in:  
 No blow back

Amt. of fill	2.00 ft
Btm. H. Temp.	120.00 F
Hole Condition	good
% Porosity	0.00
Packer Size	6.75 in
No. of Packers	3
Cushion Amt.	0.00
Cushion Type	
Reversed Out N	
Tool Chased N	
Tester	Scott Bugbee
Co. Rep.	Austin Garner
Contr.	Cheyenne
Rig #	3
Unit #	
Pump T.	

SAMPLES:  
 SENT TO:

Test Successful: Y

\*\*\* TOOL DIAGRAM \*\*\* CONVENTIONALSTRADDLE

WELL NAME: Herrick 1-927

LOCATION : 27-30s-40w

TICKET No. 11710 D.S.T. No. 2 DATE 12-6-98

TOTAL TOOL TO BOTTOM OF TOP PACKERS ..... 30

INTERVAL TOOL .....

BOTTOM PACKERS AND ANCHOR ..... 44

TOTAL TOOL ..... 74

DRILL COLLAR ANCHOR IN INTERVAL .....

C. ANCHOR STAND.Stands Single Total

P. ANCHOR STAND.Stands Single 1 Total 31

TOTAL ASSEMBLY ..... 105

C. ABOVE TOOLS.Stands6 Single Total 349

P. ABOVE TOOLS.Stands64 Single Total 3961

TOTAL DRILL COLLARS DRILL PIPE & TOOLS .. 4315

TOTAL DEPTH ..... 4390

TOTAL DRILL PIPE ABOVE K.B. .... 25

MARKS:

Sampler Data

0 PSI

00 ml water

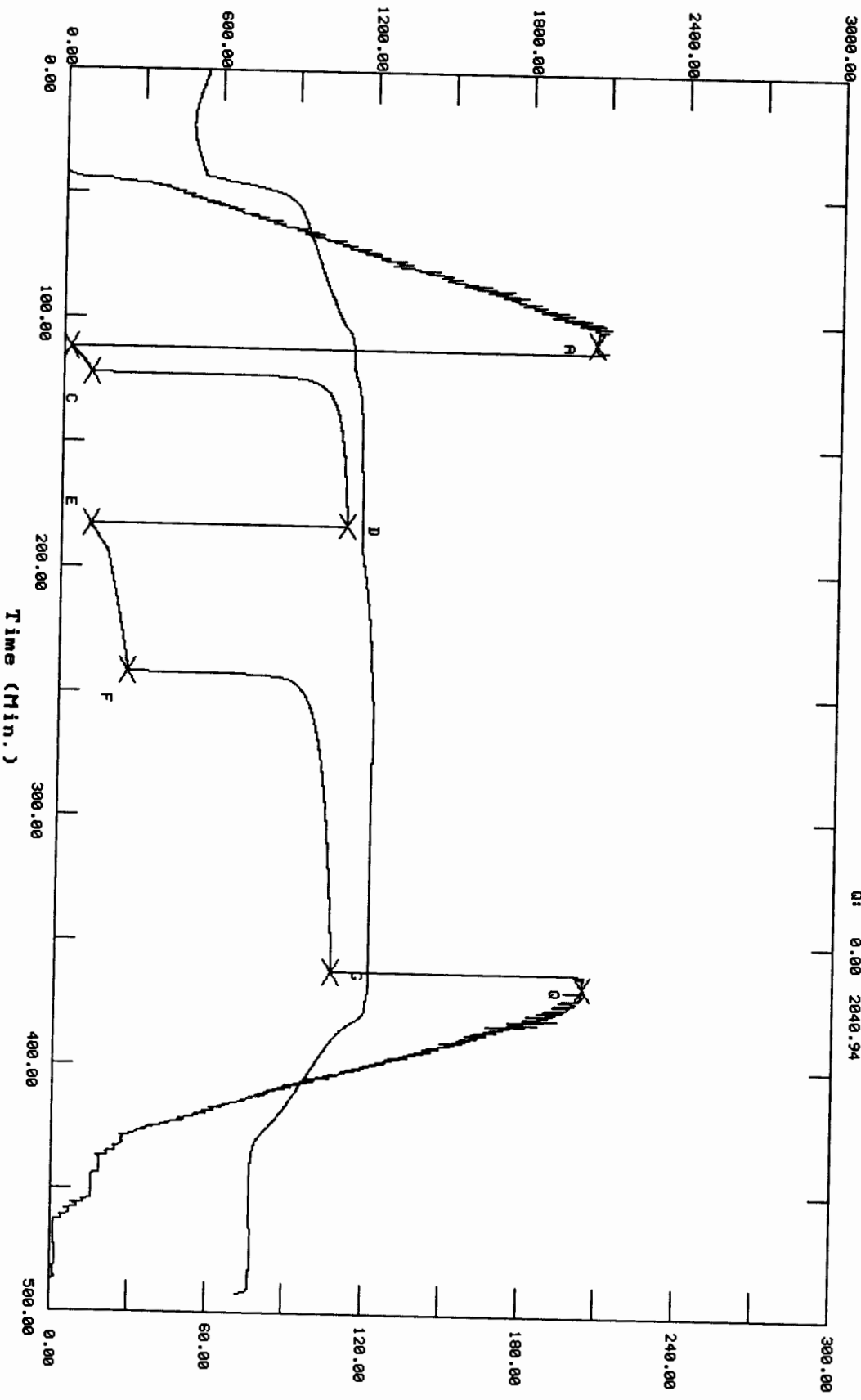
.272 @ 25 deg.

0 chlorides

P.O. SUB top of tool	4285
C.O. SUB 1'	4286
S.I. TOOL 5'	4291
3' sampler	4294
HMV 5'	4299
JARS 5'	4304
SAFETY JOINT 2'	4306
PACKER 5'	4311
PACKER 5'	4315
DEPTH 4315	
STUBB	4316
ANCHOR	
1' perf	4317
Alpine Rec.	4322
5' Pu sub	4322
23' perf	4345
AK1 Rec.	4346
1' Blank off sub	4346
T.C.	
DEPTH	
PACKER 5'	4350
2' perf	4352
1' c/o sub	4353
31'D Pipe	4384
1' c/o sub	4386
BULLNOSE AK1 Rec.	4390
T.D. 5'	4390

# TEST HISTORY

11710 DST#2 HERRICK 1-927 PRESCO WESTERN

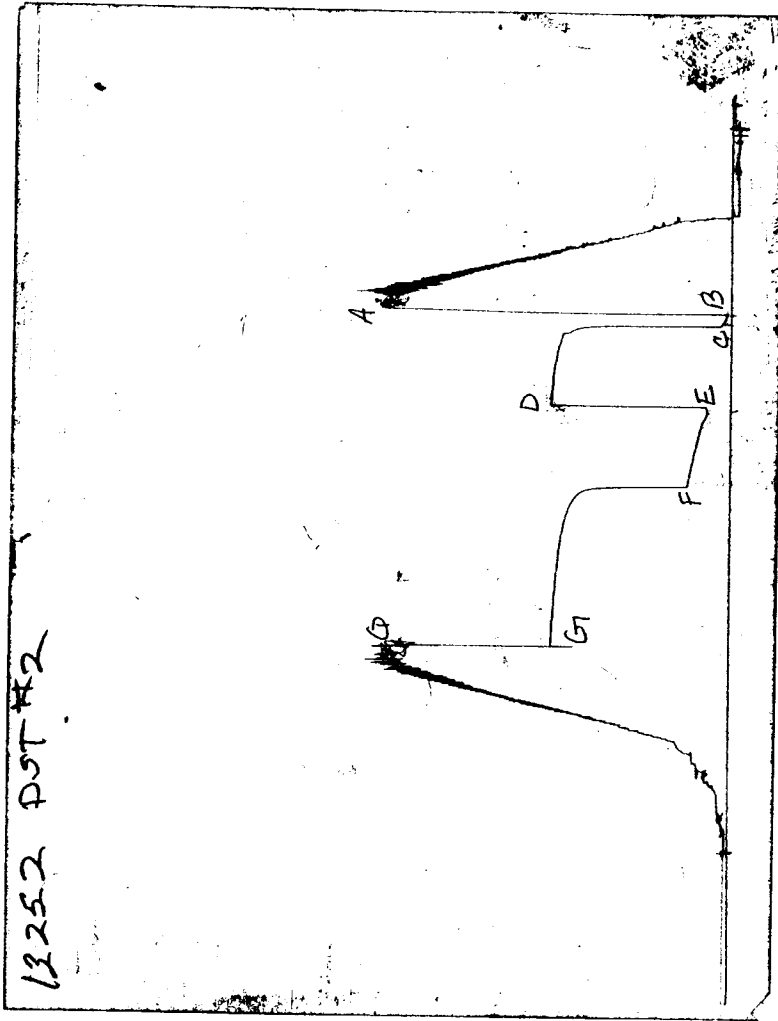


Flag Points

Flag	Time (Min.)	Pressure (PSIg)	Temperature (PSF)
A:	0.00	2060.01	
B:	0.00	24.46	
C:	10.25	104.47	
D:	60.50	1102.94	
E:	0.00	108.99	
F:	58.75	264.46	
G:	120.00	1069.66	
H:	0.00	2040.94	

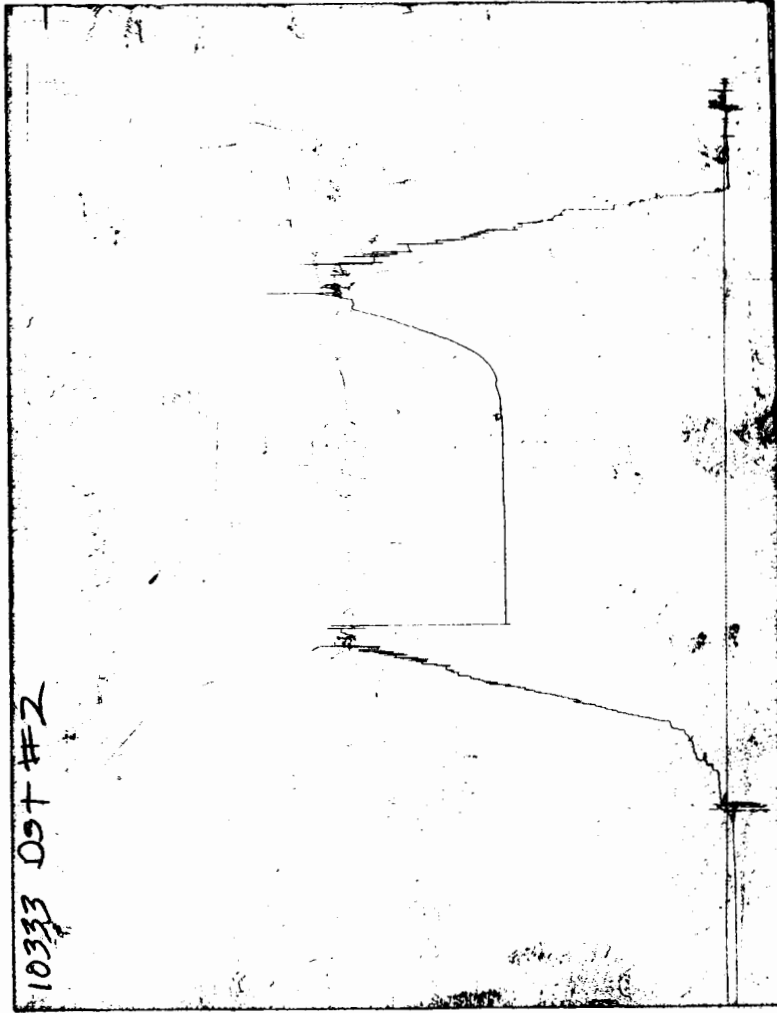
Temperature (PSF)

CHART PAGE



This is a photocopy of the actual AK-1 recorder chart

CHART PAGE



This is a photocopy of the actual AK-1 recorder chart

# TRILOBITE TESTING L.L.C.

P.O. Box 362 • Hays, Kansas 67601

No 11710

## Test Ticket

Well Name & No. Herrick 1-927 Test No. #2 Date 12-06-98  
 Company Presco Western Zone Tested Marmaton  
 Address Denver Colo. Elevation 3282 KB 3276 GL  
 Co. Rep / Geo. Austin Garner Cont. Cheyenne Reg #3 Est. Ft. of Pay      Por.      %  
 Location: Sec. 27 Twp. 30S Rge. 40W Co. Stanton State Ks.  
 No. of Copies      Distribution Sheet (Y, N)      Turnkey (Y, N)      Evaluation (Y, N)     

Interval Tested 4315-4350 Initial Str Wt./Lbs. 62,000 Unseated Str Wt./Lbs. 6,4000  
 Anchor Length 35' Wt. Set Lbs. 30,000 Wt. Pulled Loose/Lbs. 90,000  
 Top Packer Depth 4310 Tool Weight 1800  
 Bottom Packer Depth 4315 Hole Size — 7 7/8"  Rubber Size — 6 3/4"   
 Total Depth 4390 Wt. Pipe Run      Drill Collar Run 349 <sup>44 lbs</sup>  
 Mud Wt. 4.2 LCM 4 Vis. 44 WL 9.2 Drill Pipe Size 4 1/2 XH Ft. Run 3961 <sup>44 lbs</sup>  
 Blow Description 1st open weak blow built to 4 1/2"  
No blow back  
2nd open weak blow built to 5" died back to 4"  
No blow back

Recovery — Total Feet	GIP	Ft. in DC	Ft. in DP
<u>569</u>	<u>60'</u>	<u>349</u>	<u>220</u>
Rec. <u>89'</u>	Feet Of <u>watery mud</u>	%gas <u>    </u>	%oil <u>    </u> %water <u>20</u> %mud <u>80</u>
Rec. <u>360</u>	Feet Of <u>muddy water</u>	%gas <u>    </u>	%oil <u>    </u> %water <u>80</u> %mud <u>20</u>
Rec. <u>120</u>	Feet Of <u>mud cat water</u>	%gas <u>    </u>	%oil <u>    </u> %water <u>90</u> %mud <u>10</u>
Rec. <u>    </u>	Feet Of <u>    </u>	%gas <u>    </u>	%oil <u>    </u> %water <u>    </u> %mud <u>    </u>
Rec. <u>    </u>	Feet Of <u>    </u>	%gas <u>    </u>	%oil <u>    </u> %water <u>    </u> %mud <u>    </u>

BHT 120 °F Gravity      °API D@      °F Corrected Gravity      °API  
 RW 272 @ 25 °F Chlorides 900 ppm Recovery Chlorides 500 ppm System

	AK-1	Alpine	Recorder No.	T-On Location
(A) Initial Hydrostatic Mud	<u>2059</u>	<u>2060</u>	<u>3026</u>	<u>10:00 P.M.</u>
(B) First Initial Flow Pressure	<u>34</u>	<u>24</u>	(depth) <u>4322</u>	T-Started <u>11:02 P.M.</u>
(C) First Final Flow Pressure	<u>69</u>	<u>122</u>	Recorder No. <u>10333</u>	T-Open <u>1:14 A.M.</u>
(D) Initial Shut-In Pressure	<u>1086</u>	<u>1102</u>	(depth) <u>4390</u>	T-Pulled <u>5:24 A.M.</u>
(E) Second Initial Flow Pressure	<u>126</u>	<u>108</u>	Recorder No. <u>13252</u>	T-Out <u>8:00 A.M.</u>
(F) Second Final Flow Pressure	<u>253</u>	<u>264</u>	(depth) <u>4346</u>	T-Off Location <u>    </u>
(G) Final Shut-in Pressure	<u>1086</u>	<u>1069</u>	Initial Opening <u>10</u>	Test <input checked="" type="checkbox"/>
(Q) Final Hydrostatic Mud	<u>2002</u>	<u>2040</u>	Initial Shut-in <u>60</u>	Jars <input checked="" type="checkbox"/>
			Final Flow <u>2060</u>	Safety Joint <input checked="" type="checkbox"/>
			Final Shut-in <u>120</u>	Straddle <input checked="" type="checkbox"/>

TRILOBITE TESTING L.L.C. SHALL NOT BE LIABLE FOR DAMAGE OF ANY KIND OF THE PROPERTY OR PERSONNEL OF THE ONE FOR WHOM A TEST IS MADE, OR FOR ANY LOSS SUFFERED OR SUSTAINED, DIRECTLY OR INDIRECTLY, THROUGH THE USE OF ITS EQUIPMENT, OR ITS STATEMENTS OR OPINION CONCERNING THE RESULTS OF ANY TEST. TOOLS LOST OR DAMAGED IN THE HOLE SHALL BE PAID FOR AT COST BY THE PARTY FOR WHOM THE TEST IS MADE.

Approved By Austin Garner  
 Our Representative Scott Bugbee

Circ. Sub NJC  
 Sampler   
 Extra Packer   
 Elec. Rec.   
 Mileage       
 Other       
 TOTAL PRICE \$