

# 1 Line Date Range Production Report From January, 2003 Thru December, 2003

DATE: 02-13-2004  
TIME: 13:42:28  
PAGE: 1

WELL/LEASE/FIELD/STATE	Gross Oil (BBLs)	Gross Gas (Mcf)	Gross Water (BBLs)	Net Oil (BBLs)	Net Gas (Mcf)	Oil Sales (BBLs)	Gas Sales (Mcf)
** LEASE ACKERS BARRY	0	1,654	0	0	1,654	0	0
** LEASE CIRCLE EIGHT	0	6,713	0	0	6,713	0	0
** LEASE DIMMITT	0	4,560	0	0	4,560	0	0
** LEASE HERRICK	0	4,396	0	0	4,396	0	0
** LEASE HERRICK #1	0	8,423	0	0	8,423	0	0
** LEASE JULIAN	0	2,479	0	0	2,479	0	0
** LEASE KRIDER 1	0	6,221	0	0	6,221	0	0
** LEASE LYNN	0	0	0	0	0	0	0
** LEASE NICHOLAS	0	13,779	0	0	13,779	0	0
** LEASE PARKS	0	9,557	0	0	9,557	0	0
** LEASE ROLLIE JACK	0	2,885	0	0	2,885	0	0
** LEASE SAUNDERS	0	3,955	0	0	3,955	0	0
** LEASE SHORE 1	0	8,318	0	0	8,318	0	0
** LEASE TAYLOR ELEANOR V	0	5,554	0	0	5,554	0	0
***** GRAND TOTAL	0	78,494	0	0	78,494	0	0

7 MONTHS

$\frac{78,494}{7} = 11,213$

Date: 02-13-2004

Time: 13:41:46

### Production History Summary

Mth/Yr	Oil BBls	Gas MCF	Water BBls	Days	Oil Sales BBls	Gas Sales MCF	FTP	CP	Inj. Gas Mcf	Inj. Water BBls	NGL BBls	Fluid Level	Comments
1/03	0	13,287	0	403	0	0			0	0	0		
2/03	0	11,613	0	364	0	0			0	0	0		
3/03	0	13,440	0	403	0	0			0	0	0		
4/03	0	13,016	0	390	0	0			0	0	0		
5/03	0	11,288	0	403	0	0			0	0	0		
6/03	0	6,438	0	390	0	0			0	0	0		
7/03	0	9,412	0	403	0	0			0	0	0		
8/03	0	0	0	403	0	0			0	0	0		
9/03	0	0	0	390	0	0			0	0	0		
10/03	0	0	0	403	0	0			0	0	0		
11/03	0	0	0	390	0	0			0	0	0		
12/03	0	0	0	403	0	0			0	0	0		
S.Tot	0	78494	0		0	0			0	0	0		

T.30 K.40W Sec.29

Lease Name: LYNN  
 Well Name: 1-29  
 Field: KANSAS HUGOTON (CHASE)  
 Formation: CHASE  
 County, St: STANTON, KS

WI % 100.0000  
 NRI Oil % 100.0000  
 NRI Gas % 100.0000

Bef. PO 100.0000  
 Af. PO 100.0000  
 100.0000  
 100.0000

Date: 02-13-2004  
 Time: 13:41:45  
 ID: 215,003,00000051235

### Production History Report

Mth/Yr	Oil BBls	Gas MCF	Water BBls	Days	Oil Sales BBls	Gas Sales MCF	FTP	CP	Inj. Gas Mcf	Inj. Water BBls	NGL BBls	Fluid Level	Comments
1/03	0	0	0	0	0	0	0	0	0	0	0	0	
2/03	0	0	0	0	0	0	0	0	0	0	0	0	
3/03	0	0	0	0	0	0	0	0	0	0	0	0	
4/03	0	0	0	0	0	0	0	0	0	0	0	0	
5/03	0	0	0	0	0	0	0	0	0	0	0	0	
6/03	0	0	0	0	0	0	0	0	0	0	0	0	
7/03	0	0	0	0	0	0	0	0	0	0	0	0	
8/03	0	0	0	0	0	0	0	0	0	0	0	0	
9/03	0	0	0	0	0	0	0	0	0	0	0	0	
10/03	0	0	0	0	0	0	0	0	0	0	0	0	
11/03	0	0	0	0	0	0	0	0	0	0	0	0	
12/03	0	0	0	0	0	0	0	0	0	0	0	0	
S.Tot	0	0	0		0	0			0	0	0		

T.30 R.40W SEC.29

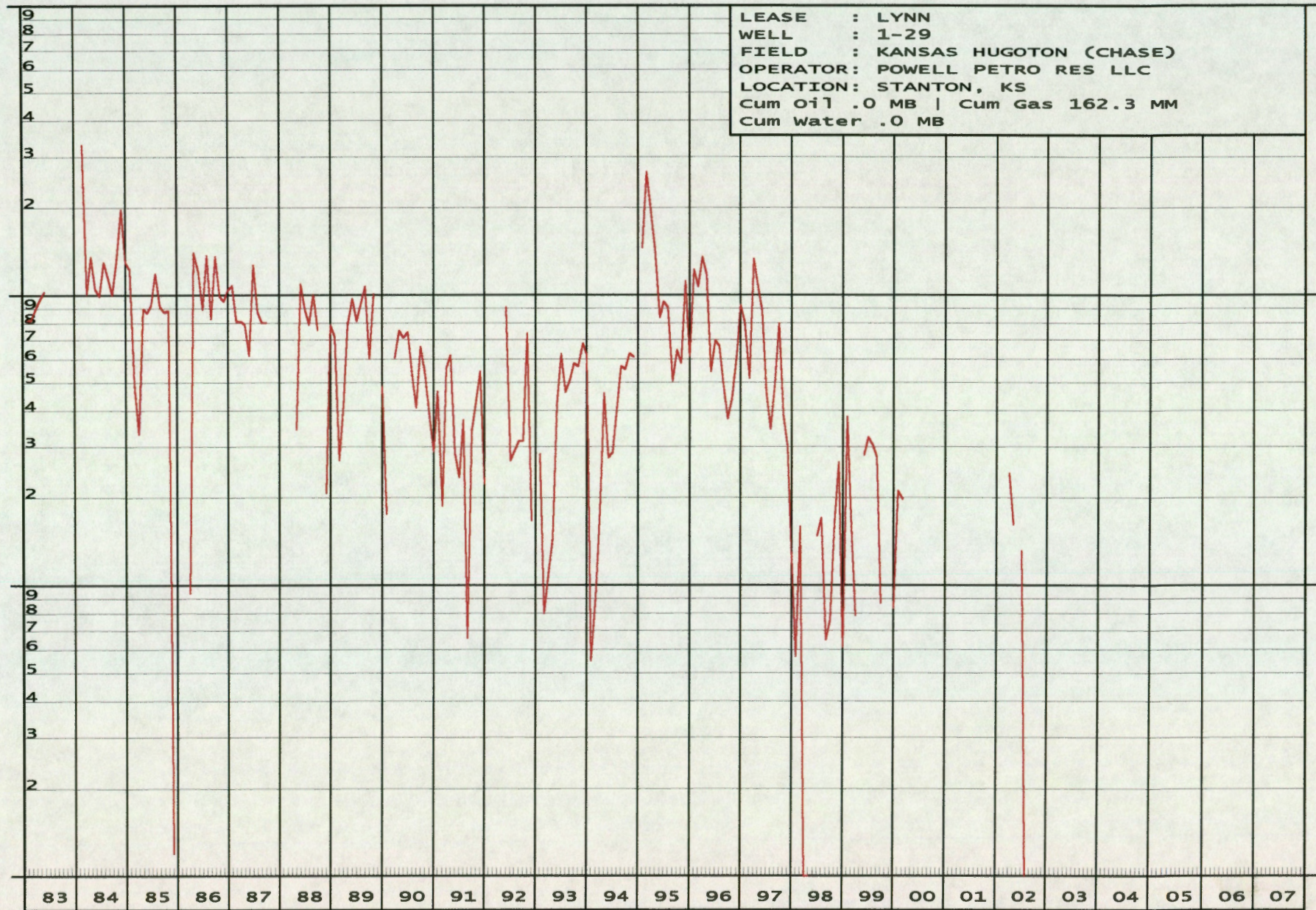
10000

1000

Gas

100

10



LEASE : LYNN  
WELL : 1-29  
FIELD : KANSAS HUGOTON (CHASE)  
OPERATOR: POWELL PETRO RES LLC  
LOCATION: STANTON, KS  
Cum Oil .0 MB | Cum Gas 162.3 MM  
Cum Water .0 MB

Gross Per Month  
02-15-2004

Stevenson