

WELL NAME + No

NAOMI #1

LOCATION

5/2 NW SW SEC 14-30S-41 W STANTON CO
KB-3378

1185 Perf Keyes 5401-06 4SPF w/2 1/2" conw gun. Flow 8 BOPD
POP. Test 220 BOPD + 344 MCF/D

4189 Acidize Keyes 5401-06 w/300 gals HCL, 600 gals 15% HF-HCL,
+1200 gals HCL/HF acid Test 18 BOPD 448 MCF/D

5" 8 824#
@ 155B
600/150SX
CIRC

1190 Sgq cas @ 3046' w/135SX out (leak dumped mud) acidized
w/750 7 1/2% MCA. Perf Keyes 5395-5408'. Acidize all pipe
w/300 gals 15% HCL, 1800 HF/HCL. Test 5 BOPD 900 MCF/D

2425-56
SgZ 170SX
11/94

7193 Acidize 5395-5408 w/1000 gals 10% HCL Frac
w/16000 gals zeldren + 23600# 20/40 + 16130 sand @ 5457'
Test 50 BOPD + 42 MCF/D

ISIP-22462
18 BPM @ 2500#
MA - 5050 FT LML
TO 3300 FT AN FLUSH
TAG PSTD,
@ 5457'

LSA9 leak
3046'
SgZ 11/90
135SX

11194 Sgq cas leak 2425-56-170SX; 3367-98-TIG HT-5 POT 10SX
Pressure from 5010' up to 600# - held ok

8196 Tag TD @ 5470 KB Did not sand pump

3367-98 SgZ 11/94
10SX

TOC 4250'

5395 KEYES
5408

TOP OF SHOE JO @ 5506'

5549'

5 1/2" 14# 200SX 60/40 POZ
NEW w/GILS & SALT

Mo	Oil	Total Fluid	% Oil	Test Date	SL	SPM	Fluid Level	MCF EST	MCF SALES	Remarks
----	-----	-------------	-------	-----------	----	-----	-------------	---------	-----------	---------

05

1	5.9	11.7	50	24)	46	8	103/11 '89	126	41		BOPM 139
2	5.1	10.1	50	15)	46	8	NP	0	0	5#CP	169
3	5.9	11.7	50	3)	46	8		0	0	5#CP	312
4	5.0	10.1	50	19)	✓	✓		0	0		175
5	4.7	9.4	50	19)	✓	✓		0	0	9) PUMP 1/2 216 3/4 STUCK W/ IS	START COMPRESSOR 113
6	6.7	13.4	50	4)	✓	✓	3) ELECTRIFY	0	0	7) PUMP 1/2 SPECTRAL DUMP 3009 AC 16 13) 14) ID TIE 38/10 OIL 30) ELECTRIFY 190	
7	8.4	16.8	50	27)	✓	✓		698	368	(SAME PUMP THIS IS AID AT PUMP IN JACOURTAL)	307
8	8.4	16.8	50	16)	✓	✓		660	333	5#CP	313
9	8.4	16.8	50	3)	✓	✓		550	309	5#CP	287
10	8.4	16.8	50	5)	✓	✓		268	193	5#CP	346
11	5.9	11.7	50	9)	✓	✓		330	162	5#CP	298
12	6.7	13.4	50	6)	46	8.5		325	137	6#CP	213

06

1	5.0	10.1	50	17)	46	8		224	73		185
2	3.4	6.7	50	16)	✓	✓		57	15	11) PUMP STUCK, STRIP	50
3	5.0	5.0	100	20)	✓	✓		260	89	5) HO-30 F	57
4	9.0	18.1	50	20)	✓	✓		623	137		102
5	5.0	5.0	100	29)	✓	8.5		627	277	3) RP BROSSY	172
6	11.5	13.4	86	9)	✓	✓		605	292		186
7	1.7	6.5	5	3)	✓	✓		587	307		197
8	2.1	16.7	13	7)	✓	✓		552	288		177
9	1.4	9.3	15	4)	✓	✓		525	221		187
10	1.4	9.3	15	4)	✓	✓		468	202		205
11	0.4	8.4	5	9)	✓	✓		?	213		7
12	0.3	5	5	10)	46	8.5		0	24		231

07

1	1	8	13	21)	46	8.5		0	0		79
2	1.4	9.3	15	12)	✓	✓		0	16		206
3	1.4	9.3	15	15)	✓	8		72	30		79
4	NT							285	173	11) HO-20 F, 2002	175
5	1.4	9.3	15	11)	44	8		503	276		200
6	1.4	9.3	15	7)	46	8.5		452	257		309
7	1.4	9.3	15	5)	✓	✓		498	294		155
8	NT									12) 26 1/2" HOLE, PUMP 1/2 12-3/4 SC, 204 3/4	
9	1.4	9.3	15	20)	✓	✓					
10											
11											
12											

08

1											
2											
3											
4											
5											
6											
7											
8											
9											
10											
11											
12											

09

1											
2											
3											
4											
5											
6											
7											
8											
9											
10											
11											
12											

Naomi #1

No.	Oil	Total Fluid	% Oil	Test Date	SL	SPM	Fluid Level	Bo	Time Run	Remarks
-----	-----	-------------	-------	-----------	----	-----	-------------	----	----------	---------

95

MCF Sales

1	5	11.7	43	29	53	6		N	24	0	
2	NT									274	18) HO 40-TW-FLL
3	11.6	15.7	74	28	53	6				301	
4	11.6	23.4	71	10	53	6				197	
5	12.9	23	56	25	44	6		N		0	4) CHG SL TO 44" 23) Pump 1 1/4 (210-3/4, Rep 10-1291-206)
6	8.3	21.7	28	74	44	6		N		447	
7	11.6	24.7	47	12	✓	✓		N		0	
8	20.1	23.4	86	22	✓	✓		N		0	
9	NT									0	
10	11.6	15.7	74	13	✓	✓		✓	24	0	
11	13.3	17.4	77	14	✓	✓		✓	✓	0	
12	10.8	13.8	78	21	✓	✓		I	24	0	

96

MCF Sales

1	NT									0	
2	26	31	84	20	44	56.11	156	N	24	0	8) 171-110 TW 60L 44x6 1/4 (1) SPEED UP TO 6 29) Speed up to 11
3	NT									0	
4	45	48	93	17	44	12	154	B	24	0	4) HO LL-3) 44x7 INCTO9
5	NT									0	
6	53	10	71	6	44	15		N	✓	320	18) Pump 1 1/2 216 3/4 87M 42 RODS - SORCE
7	46	66	69	12	✓	✓		✓	✓	311	
8	NT									60	28) FBG 108 Split Pipe loc 150/18 BASN 171-2" Pump 1 1/2 10 3/4 206 3/4
9	42	62	68	3	✓	✓		✓	✓	0	
10	NT									0	
11	NT									0	
12	46	56	82	4	44	15		N	24	53	27) HO 20LL 500 23) Pump 1 1/2 216 3/4 25TG 40 ROD NO SCALE

97

MCF Sales

1	136	55	66	9	44	15		N	24	200	
2	24	37	64	5	✓	✓		✓	✓	0	
3	20	27	75	10	✓	✓	170PB	✓	✓	0	17) 44x? 4) HO-20LL
4	33	60	55	14	✓	✓		✓	✓	0	12) HO-20LL
5	NT									0	
6	20	30	67	11	44	6	170PB	N	24	0	4) 44x10 WILL SLOW DN
7	18.7	28.8	65	13	✓	✓		✓	✓	0	
8	NT									0	
9	NT									0	
10	25	30	83	21	44	6		N	24	0	
11	NT									0	
12	NT									0	

98

EST MCF Sales Sales

1	NT						163HP				21) 44x6 1/4 Speed up to 7 3/4 1715TW
2	15	25	60	3	44	7.5		T	25		
3	NT										
4	NT										
5	NT										
6	NT										
7	NT										
8	NT										
9	3.5	15	13	25	44	7.5		N	24		
10	NT										8 ACT 1-10ML
11	NT										
12	NT									716/442	

99

1	NT									677	0
2	16.7	24	69	25	44	7.5		M	24	958	687
3	NT									229	
4	NT									519	21) HO, 30 DL
5	NT									820	
6	NT									528	
7	NT									412	
8	NT									582	
9	14	20	69		44	7.5		N	24	465	
10	NT									333	
11	NT									243	
12	NT									288	

6443

NAOMI #1

OIL T.F. OIL WTR S SPM FL MCF CHEM										PUMP		REMARKS		
90										138-2564K				
	5	5	100							2276			23) SQZ CSG FEAR ADDITION. H.F. CO. 16.4-2" Pump 1 1/2 218 3/4	1420
	4	4	100		54	7 1/2				15224				1083
	5	5	100							19627			15) LAYDN RODS - SWAB WELL IN - FLOWING	1047
	3	3	100							12299			"	1329
	3	3	100							11614			"	975
	4	4	100							8771			"	856
	12	12	100							4636			"	574
	NT	7			57	5				7558			2) RAN ROD + PUMP - 1 1/2 218 3/4 PUT ON PUMP	1152
	NT									11736				1282
	10	12	81							4548				1207
	12	16	75							7764				977
										5323			29) Pump 1 1/2 221 3/4	1065
91														
	10	13	79							5323				1100
	15	18	83							6077				1050
	15	15	100							5712				1222
	17	18	94		54	5				5712				1064
	16	17	94							2785			23) Pump 1 1/2 221 3/4	905
	16	20	80							4810				1059
	10	13	77							4686				730
	9	12	78							3509			7) Pump - 1 1/2 217 3/4	747
	8	8	100					162		2426			10) (5 1/2 x 5) 100% OIL 12) Pump 1 1/2 217 3/4	604
	11	11	90		83	6				1814			23) Pump STUCK 1 1/2 TBS (163 HOSE) Nut - 2" 217 3/4	756
	8	8	100					162		1963			12) Pump 1 1/2 215 3/4 17) FL	618
	14	17	82							2464			18) SCALE SQZ	908
92														
	16	16	100		53	6				2713				1676
	14	14	100		53	6				2284				222
	14	15	96		53	6				2576				1660
	16	17	94		53	6				2640				1592
										2172				1745
	15	15	100	11)	53	9				2011				1446
	5	12	47	24)	53	6				1366			20) TBS LK (161 HOLE) PUT AT 10 3/5 ON TOP 16.3-2" Pump 1 1/2 218 3/4 28) LS	1333
	10	12	83	14)	53	6				1116			13) NEVER PUMPED UP FROM 7120 RODS UNREMOVED. Pump 1 1/2 w/ PA PLUNGER 216 3/4	944
	8.35	10.35	81	16)	53	8				2365				1189
	10	22	46	16)	53	6				1941				1274
	NT									1496				863
										1741			23) Sand (8m 2 1/2 ts 2" J155 - 2", 10-2" new. Swab. Pump 1 1/2 218 3/4 3) LS	962
93														
	8	10	81	12	53	6				0				950
	7	9	77	22	53	6				1142				852
	7	9	77	9	53	6				1258			17) Tbs (163 HOLE) 16.5-2" Pump 1 1/2 10 3/4 new screws 208 3/4	616
	NT													1137
	NT													797
	3	7	50	6)	53	6							16) Swabwell Pump 1 1/2 217 3/4	676
	NT												31) Pretest (9) (58) (10) (10)	639
	49	53	93	25)	53	6							9) Frac Key - 3. 16" MA, SN, 4-2" TA, 160-2" Pump 1 1/2 216 3/4	1276
	NT												14) Pump 1 1/2 216 3/4	2057
	NT													1853
	23.4	24	97	18	53	6							22) Pump 1 1/2 216 3/4	1551
														1307
94														
	27	30	88	10	53	6				636			Gas Sales	794
	27	32	84	15	53	6	155			1430			20) FL 53x8	1002
	20	30	67	8						1596				704
	22	32	69	25						953			13) RA-TOP 3/4 sub	1283
										869				1880
	51	71	72	28)	53	6	NP-24			1572				1748
	29	48	50	13	53	6	NP-24			394			7) Pump - 1 1/2 Red 30 3/4 mls + Bcs 9) Test bit - 1 hole	1174
	NT								2545	2222				2136
	24	44	54	9			NP 24			1587				2199
	24	33	70	10			NP 24			1581				1125
	NT													365
														365

CSG: 8/30/90 PRTA-5503 SNO 5474 Rtn of 2 1/8" MA @ 5479
SQZ:
PERF/OH: 5395-5408 190

Naomi #1



PUMP

OIL T.F. OIL WTR SPM FL MCF CHEM REMARKS

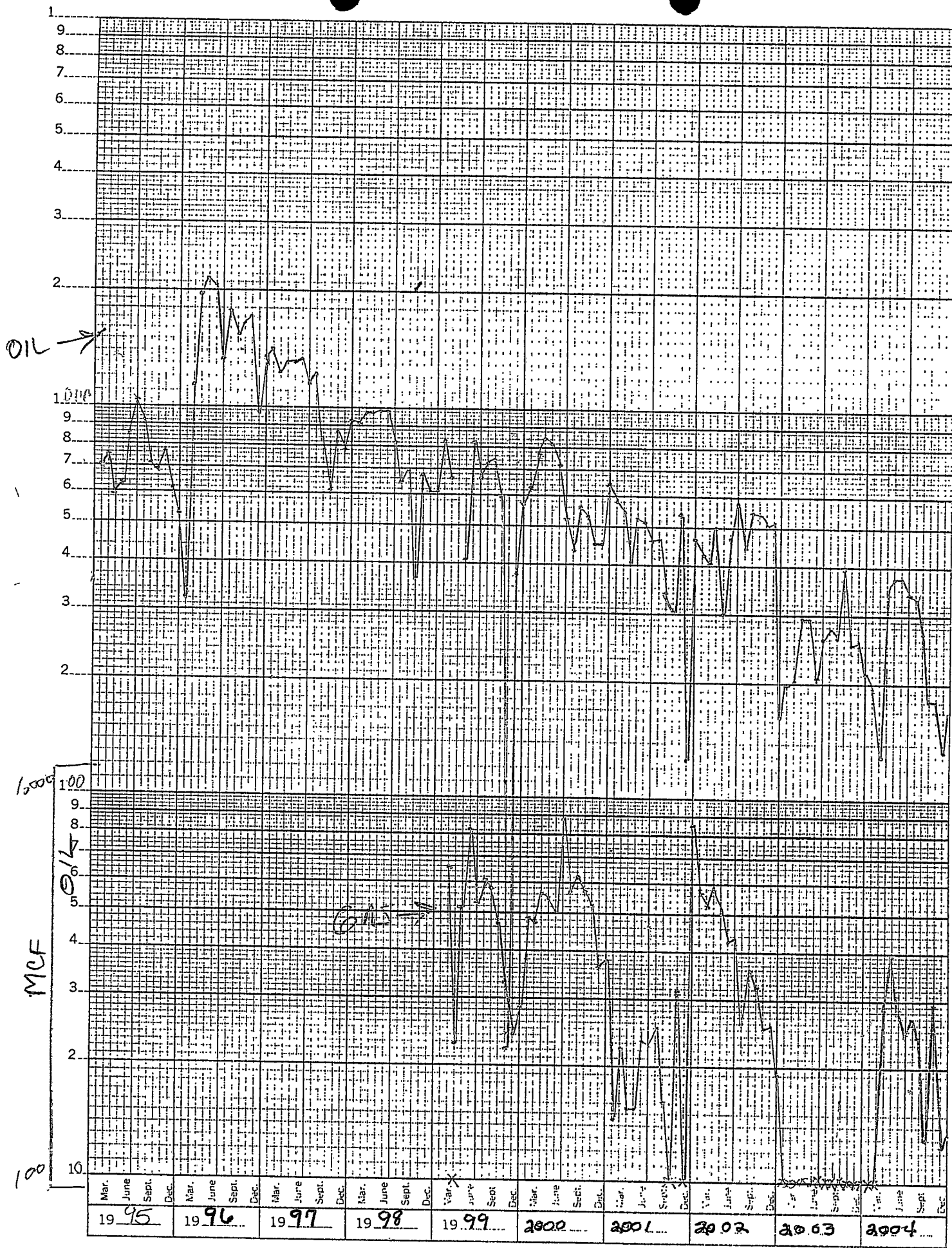
DATE	OIL	T.F.	OIL	WTR	SPM	FL	MCF	CHEM	REMARKS	
	135	135	100	29)	54	9	59NP	1 1/2	19) Started up 18) Complete Jct + POP, 161-2" 14B 3/4 63 7/8 Pump 1/2 25)(54x9)	1214
										4262
										3515
										2125
										2370
										3058
										5704
										6648
										6540
										5107
										4369
										3158
86										
1										2980
2										2669
3	88	100	88	7)	54	8				3878
4							112NP 157NP		20)(54x7) 20)(54x7)	2980
5			95	16)						3018
6										2922
7										2658
	50	50	100	10)	54	8				2512
	54	55	98	21)	56	8				2732
10										2530
11										2488
12										3806
87										
1	34	34	100	25)	56	8				3324
2										3121
3										3142
4										2782
5										3352
6					56	8				2773
7					56	8				3488
8					56	8				2655
9	36.33/05.01	26.92/05.07	100	17)31	56	8				3777
10	35.07	35.07	100	30)	56	8				3521
11	20.04	20.04	100	9)	56	8				3024
12					56	8			31) Pump 1/2 14B 3/4 63 7/8	2974
88										
	43	43	100				NT	3702		3875
	46	46	100				NT			2899
3	33	233	100		56	8				3046
4	28	28	100		56	8		2104		2307
5	26	26	100		56	8		2968		24210
6	24	24	100		✓	✓		2397		1862
7	24	24					NT	3013		2832
8	22	22	100		56	10		4031		3309
9	22	23	98		56	8		3776		2713
10	22	23	98					4581		3570
11	20	23	98		56	10		3988		3099
12	22	23	98		56	8				2097
89								757	ON	
1			1		56	8		45MCF/D	24	598
2	20	20	100		56	8		607		1227
3	20	20	98		54	9		1838		1982
4	16	16	98		Flow		10317	400MCF/D	11) H FACID, FLOWING, REMOVED PU+RODS, 161-2"	1885
5	23	30	78					10948		1088
6	22	23	95					8073		1594
7	18	19	93					7253		1796
8	15	16	93					900		1559
	15	16	93					6405	29) QUIT FLOWING POP, 24-3/4 Pump 1/2 LOWER TAG 3JTS	2347
	30	32	93		54	10		6238	2) Pump 1/2-218 3/4	2504
1	40	43	93		34	54			→ CHECK OUT UNIT 1) SAND GO 10) PUMP R.O.B., 164-2" Pump 1/2, 218 3/4 24) TACS LTO 58"	1389
12	42	45	93					6125		2703

CSG :

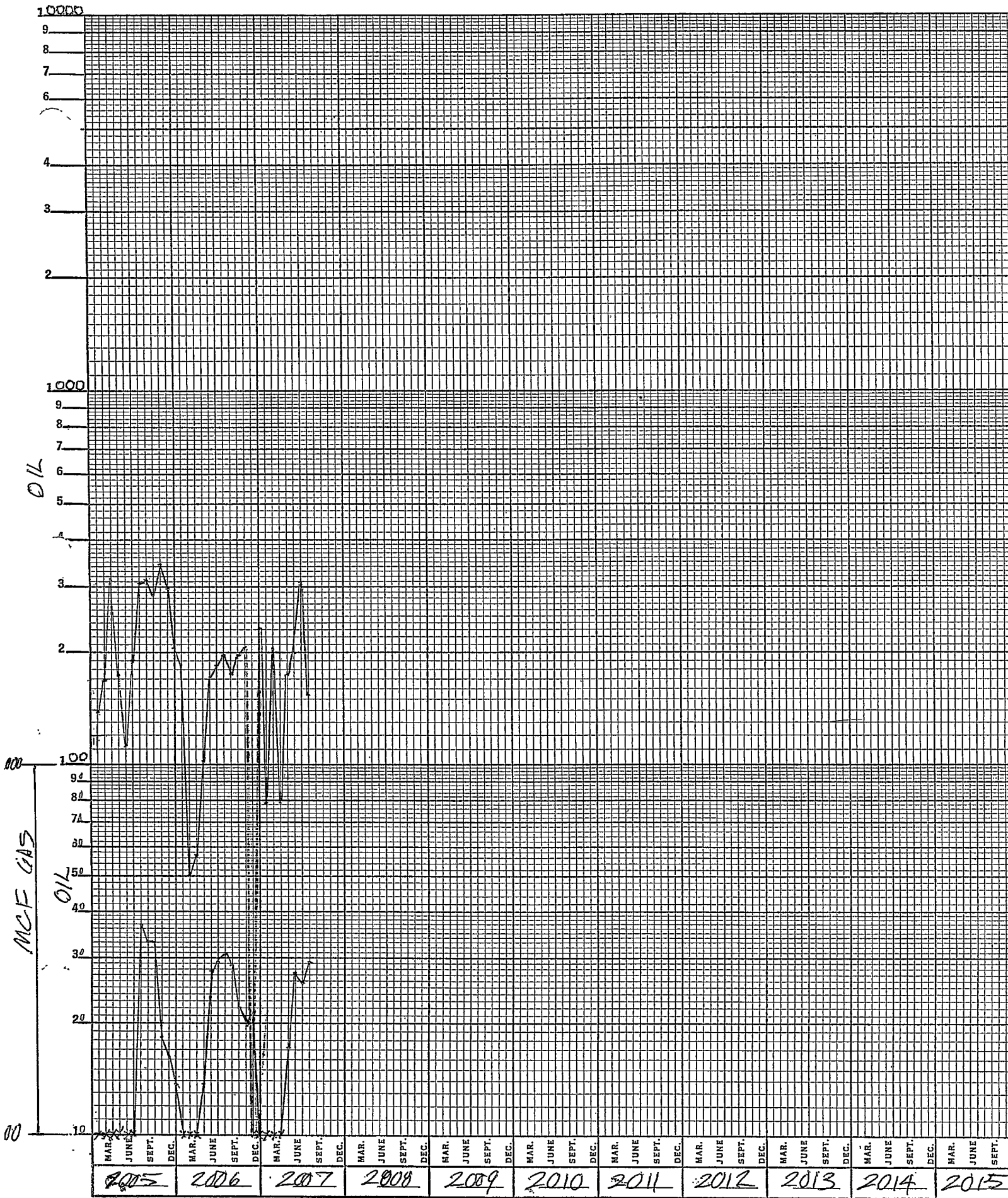
SOZ :

PERF/OH:

NAOMI #1



Naomi



NAOMI