



DRILL STEM TEST REPORT

Prepared For: **Messenger Petroleum Inc**

625 S Main St
Kingman KS 67068

ATTN: Jon Christensen

33 30 7W Kingman KS

Wells # Z-1

Start Date: 2006.05.03 @ 17:09:52

End Date: 2006.05.04 @ 01:16:07

Job Ticket #: 24830 DST #: 1

Trilobite Testing, Inc
PO Box 362 Hays, KS 67601
ph: 785-625-4778 fax: 785-625-5620



TRILOBITE TESTING, INC.

DRILL STEM TEST REPORT

Messenger Petroleum Inc
 625 S Main St
 Kingman KS 67068
 ATTN: Jon Christensen

Wells # Z-1

33 30 7W Kingman KS

Job Ticket: 24830

DST#: 1

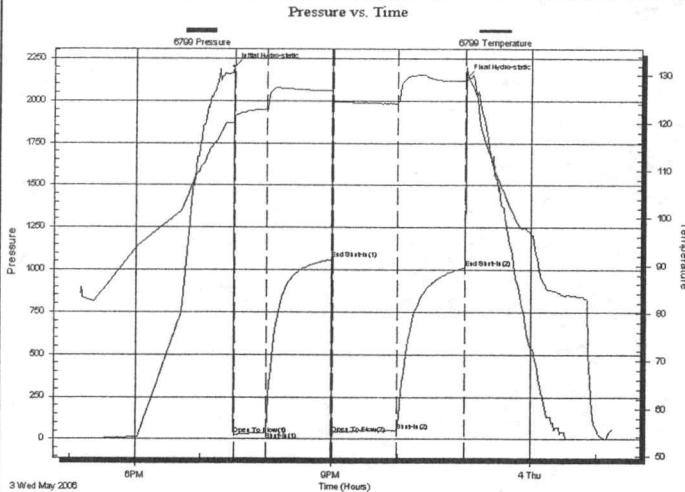
Test Start: 2006.05.03 @ 17:09:52

GENERAL INFORMATION:

Formation: **Mississippi**
 Deviated: **No** Whipstock: **ft (KB)**
 Time Tool Opened: 19:30:07
 Time Test Ended: 01:16:07
 Test Type: Conventional Bottom Hole
 Tester: Gerald Adams
 Unit No: 36
 Interval: **4355.00 ft (KB) To 4369.00 ft (KB) (TVD)**
 Reference Elevations: 1621.00 ft (KB)
 Total Depth: 4369.00 ft (KB) (TVD) 1612.00 ft (CF)
 Hole Diameter: 7.88 inches Hole Condition: Fair KB to GR/CF: 9.00 ft

Serial #: 6799 Inside
 Press@RunDepth: 50.32 psig @ 4356.00 ft (KB) Capacity: 7000.00 psig
 Start Date: 2006.05.03 End Date: 2006.05.04 Last Calib.: 2006.05.04
 Start Time: 17:09:57 End Time: 01:16:06 Time On Btm: 2006.05.03 @ 19:29:22
 Time Off Btm: 2006.05.03 @ 23:00:52

TEST COMMENT: IF Strong blow BOB in 15 secs
 ISI No blow
 FF Strong blow BOB in 10 secs GTS in 3" (see gas flow report.) (caught gas sample)
 FSI No blow



PRESSURE SUMMARY

Time (Min.)	Pressure (psig)	Temp (deg F)	Annotation
0	2199.38	119.93	Initial Hydro-static
1	22.89	121.03	Open To Flow (1)
31	39.94	122.92	Shut-In(1)
90	1060.76	126.93	End Shut-In(1)
92	28.61	124.43	Open To Flow (2)
150	50.32	124.04	Shut-In(2)
211	1013.93	128.81	End Shut-In(2)
212	2136.58	131.75	Final Hydro-static

Recovery

Length (ft)	Description	Volume (bbl)
120.00	G&OCM 15%G 8%O 77%M	0.59
0.00	4001' GIP	0.00
0.00		0.00

Gas Rates

	Choke (inches)	Pressure (psig)	Gas Rate (Mcf/d)
First Gas Rate	0.25	5.00	30.78
Last Gas Rate	0.25	7.00	33.95
Max. Gas Rate	0.25	7.00	33.95



**TRILOBITE
TESTING, INC.**

DRILL STEM TEST REPORT

TOOL DIAGRAM

Messenger Petroleum Inc

Wells # Z-1

625 S Main St
Kingman KS 67068

33 30 7W Kingman KS

Job Ticket: 24830

DST#: 1

ATTN: Jon Christensen

Test Start: 2006.05.03 @ 17:09:52

Tool Information

Drill Pipe:	Length: 4121.00 ft	Diameter: 3.80 inches	Volume: 57.81 bbl	Tool Weight: 2100.00 lb
Heavy Wt. Pipe:	Length: 0.00 ft	Diameter: 0.00 inches	Volume: 0.00 bbl	Weight set on Packer: 20000.00 lb
Drill Collar:	Length: 241.00 ft	Diameter: 2.25 inches	Volume: 1.19 bbl	Weight to Pull Loose: 70000.00 lb
			<u>Total Volume: 59.00 bbl</u>	Tool Chased 0.00 ft
Drill Pipe Above KB:	35.00 ft			String Weight: Initial 62000.00 lb
Depth to Top Packer:	4355.00 ft			Final 64000.00 lb
Depth to Bottom Packer:	ft			
Interval between Packers:	14.00 ft			
Tool Length:	42.00 ft			
Number of Packers:	2	Diameter: 6.75 inches		

Tool Comments:

Tool Description

Tool Description	Length (ft)	Serial No.	Position	Depth (ft)	Accum. Lengths
Shut In Tool	5.00			4332.00	
Hydraulic tool	5.00			4337.00	
Jars	5.00			4342.00	
Safety Joint	3.00			4345.00	
Packer	5.00			4350.00	28.00 Bottom Of Top Packer
Packer	5.00			4355.00	
Stubb	1.00			4356.00	
Recorder	0.00	6799	Inside	4356.00	
Perforations	10.00			4366.00	
Recorder	0.00	13400	Outside	4366.00	
Bullnose	3.00			4369.00	14.00 Bottom Packers & Anchor

Total Tool Length: 42.00



**TRILOBITE
TESTING, INC.**

DRILL STEM TEST REPORT

FLUID SUMMARY

Messenger Petroleum Inc

Wells # Z-1

625 S Main St
Kingman KS 67068

33 30 7W Kingman KS

Job Ticket: 24830

DST#: 1

ATTN: Jon Christensen

Test Start: 2006.05.03 @ 17:09:52

Mud and Cushion Information

Mud Type: Gel Chem

Mud Weight: 9.00 lb/gal

Viscosity: 45.00 sec/qt

Water Loss: 8.77 in³

Resistivity: 0.00 ohm.m

Salinity: 5000.00 ppm

Filter Cake: 0.02 inches

Cushion Type:

Cushion Length: ft

Cushion Volume: bbl

Gas Cushion Type:

Gas Cushion Pressure: psig

Oil API:

Water Salinity: ppm

deg API

ppm

Recovery Information

Recovery Table

Length ft	Description	Volume bbl
120.00	G&OCM 15%G 8%O 77%M	0.590
0.00	4001' GIP	0.000
0.00		0.000

Total Length: 120.00 ft

Total Volume: 0.590 bbl

Num Fluid Samples: 0

Num Gas Bombs: 1

Serial #: ga-3

Laboratory Name: Caraway

Laboratory Location: Liberal, KS

Recovery Comments:

Serial #: 6799

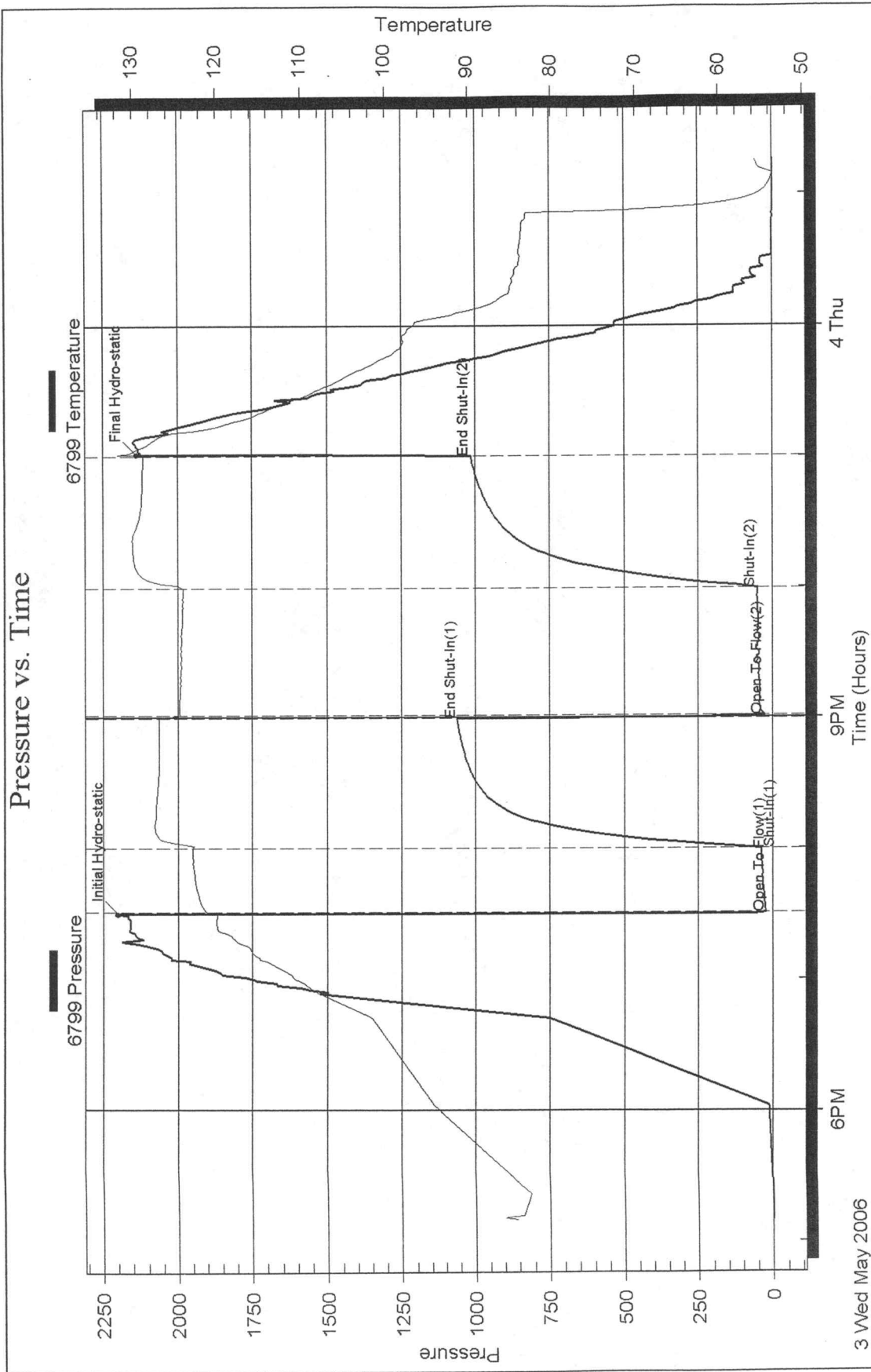
Inside

Messenger Petroleum Inc

33 30 7W Kingman KS

DST Test Number: 1

Pressure vs. Time





DRILL STEM TEST REPORT

Prepared For: **Messenger Petroleum Inc**

625 S Main St
Kingman KS 67068

ATTN: Jon Christensen

33 30 7W Kingman KS

Wells # Z-1

Start Date: 2006.05.04 @ 08:34:16

End Date: 2006.05.04 @ 16:40:46

Job Ticket #: 24831 DST #: 2

Trilobite Testing, Inc

PO Box 362 Hays, KS 67601

ph: 785-625-4778 fax: 785-625-5620

Messenger Petroleum Inc

Wells # Z-1

33 30 7W Kingman KS

DST # 2

Mississippi

2006.05.04



**TRILOBITE
TESTING, INC.**

DRILL STEM TEST REPORT

Messenger Petroleum Inc
625 S Main St
Kingman KS 67068
ATTN: Jon Christensen

Wells # Z-1

33 30 7W Kingman KS

Job Ticket: 24831

DST#: 2

Test Start: 2006.05.04 @ 08:34:16

GENERAL INFORMATION:

Formation: **Mississippi**
Deviated: No Whipstock: ft (KB)

Time Tool Opened: 10:37:16

Time Test Ended: 16:40:46

Interval: **4369.00 ft (KB) To 4384.00 ft (KB) (TVD)**

Total Depth: 4369.00 ft (KB) (TVD)

Hole Diameter: 7.88 inches Hole Condition: Fair

Test Type: Conventional Bottom Hole

Tester: Gerald Adams

Unit No: 36

Reference Elevations: 1621.00 ft (KB)

1612.00 ft (CF)

KB to GR/CF: 9.00 ft

Serial #: 6799 Inside

Press@RunDepth: 77.26 psig @ 4370.00 ft (KB)

Start Date: 2006.05.04

End Date:

2006.05.04

Start Time: 08:34:21

End Time:

16:40:45

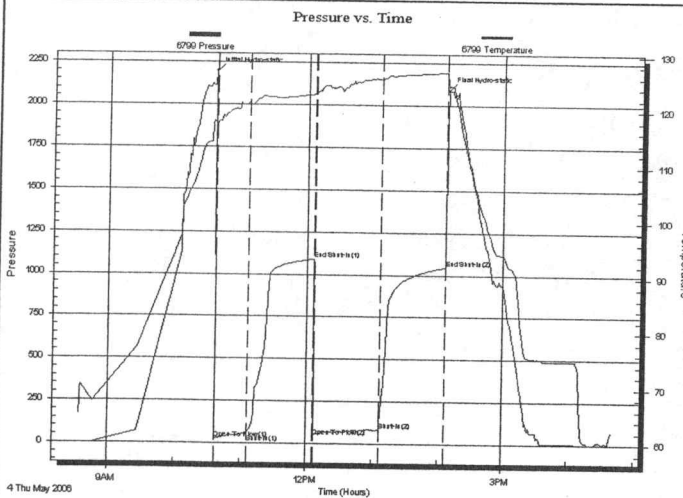
Capacity: 7000.00 psig

Last Calib.: 2006.05.04

Time On Btm: 2006.05.04 @ 10:36:16

Time Off Btm: 2006.05.04 @ 14:08:01

TEST COMMENT: IF Strong blow BOB in 5"
ISI No blow
FF Strong blow BOB in 2"
FSI No blow



PRESSURE SUMMARY

Time (Min.)	Pressure (psig)	Temp (deg F)	Annotation
0	2195.06	117.81	Initial Hydro-static
1	20.03	117.68	Open To Flow (1)
31	51.91	121.35	Shut-In(1)
90	1088.28	122.98	End Shut-In(1)
91	40.31	123.10	Open To Flow (2)
151	77.26	125.75	Shut-In(2)
210	1042.63	127.04	End Shut-In(2)
212	2091.28	124.41	Final Hydro-static

Recovery

Length (ft)	Description	Volume (bbl)
120.00	GCMw/Ospecs 10%G 90%M	0.59
60.00	G&OCWM 4%G 2%O 40%W 54%M	0.30
0.00	600' GIP	0.00
0.00	RW= .42 @ 70 deg. 15000	0.00
0.00		0.00

Gas Rates

Choke (inches)	Pressure (psig)	Gas Rate (Mcf/d)



**TRILOBITE
TESTING, INC.**

DRILL STEM TEST REPORT

TOOL DIAGRAM

Messenger Petroleum Inc

Wells # Z-1

625 S Main St
Kingman KS 67068

33 30 7W Kingman KS

Job Ticket: 24831

DST#: 2

ATTN: Jon Christensen

Test Start: 2006.05.04 @ 08:34:16

Tool Information

Drill Pipe:	Length: 4121.00 ft	Diameter: 3.80 inches	Volume: 57.81 bbl	Tool Weight: 2100.00 lb
Heavy Wt. Pipe:	Length: 0.00 ft	Diameter: 0.00 inches	Volume: 0.00 bbl	Weight set on Packer: 20000.00 lb
Drill Collar:	Length: 241.00 ft	Diameter: 2.25 inches	Volume: 1.19 bbl	Weight to Pull Loose: 90000.00 lb
			<u>Total Volume: 59.00 bbl</u>	Tool Chased 0.00 ft
Drill Pipe Above KB:	21.00 ft			String Weight: Initial 67000.00 lb
Depth to Top Packer:	4369.00 ft			Final 67000.00 lb
Depth to Bottom Packer:	ft			
Interval between Packers:	15.00 ft			
Tool Length:	43.00 ft			
Number of Packers:	2	Diameter: 6.75 inches		

Tool Comments:
Slid tool approx. 8' to bottom.

Tool Description

Tool Description	Length (ft)	Serial No.	Position	Depth (ft)	Accum. Lengths
Shut In Tool	5.00			4346.00	
Hydraulic tool	5.00			4351.00	
Jars	5.00			4356.00	
Safety Joint	3.00			4359.00	
Packer	5.00			4364.00	28.00 Bottom Of Top Packer
Packer	5.00			4369.00	
Stubb	1.00			4370.00	
Recorder	0.00	6799	Inside	4370.00	
Perforations	11.00			4381.00	
Recorder	0.00	13400	Outside	4381.00	
Bullnose	3.00			4384.00	15.00 Bottom Packers & Anchor

Total Tool Length: 43.00



**TRILOBITE
TESTING, INC.**

DRILL STEM TEST REPORT

FLUID SUMMARY

Messenger Petroleum Inc

Wells # Z-1

625 S Main St
Kingman KS 67068

33 30 7W Kingman KS

Job Ticket: 24831

DST#: 2

ATTN: Jon Christensen

Test Start: 2006.05.04 @ 08:34:16

Mud and Cushion Information

Mud Type: Gel Chem	Cushion Type:	Oil API:	deg API
Mud Weight: 9.00 lb/gal	Cushion Length: ft	Water Salinity:	ppm
Viscosity: 38.00 sec/qt	Cushion Volume: bbl		
Water Loss: 8.76 in ³	Gas Cushion Type:		
Resistivity: 0.00 ohm.m	Gas Cushion Pressure: psig		
Salinity: 5000.00 ppm			
Filter Cake: 0.02 inches			

Recovery Information

Recovery Table

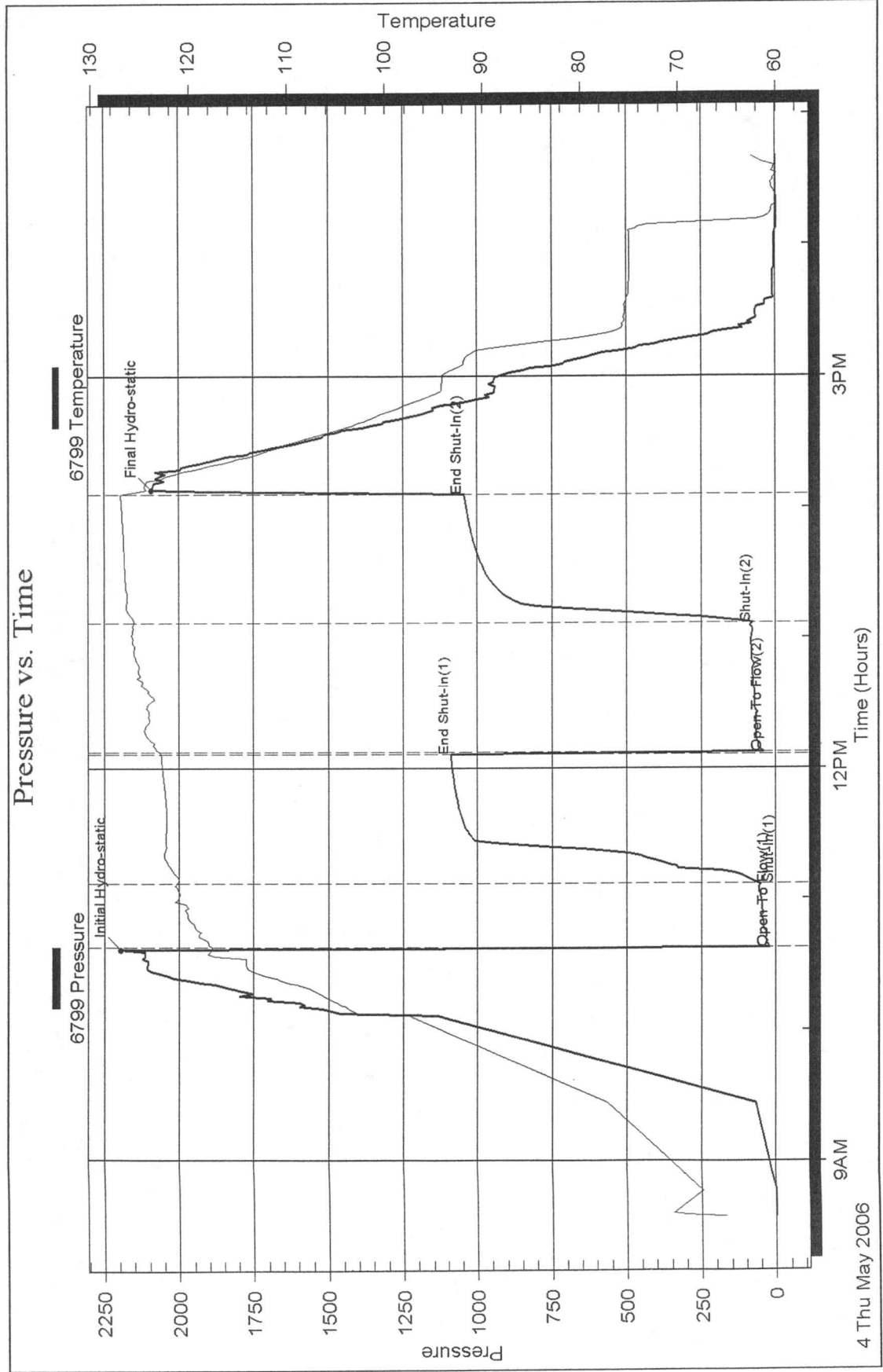
Length ft	Description	Volume bbl
120.00	GCMw/Ospecs 10%G 90%M	0.590
60.00	G&OCWM 4%G 2%O 40%W 54%M	0.295
0.00	600' GIP	0.000
0.00	RW= .42 @ 70 deg. 15000	0.000
0.00		0.000

Total Length: 180.00 ft Total Volume: 0.885 bbl

Num Fluid Samples: 0 Num Gas Bombs: 0 Serial #: none

Laboratory Name: Laboratory Location:

Recovery Comments:





DRILL STEM TEST REPORT

Prepared For: **Messenger Petroleum Inc**

625 S Main St
Kingman KS 67068

ATTN: Jon Christensen

33 30 7W Kingman KS

Wells # Z-1

Start Date: 2006.05.06 @ 01:16:03

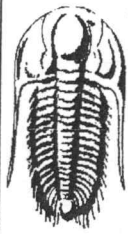
End Date: 2006.05.06 @ 10:46:03

Job Ticket #: 24832 DST #: 3

Trilobite Testing, Inc

PO Box 362 Hays, KS 67601

ph: 785-625-4778 fax: 785-625-5620



TRILOBITE TESTING, INC.

DRILL STEM TEST REPORT

Messenger Petroleum Inc
 625 S Main St
 Kingman KS 67068
 ATTN: Jon Christensen

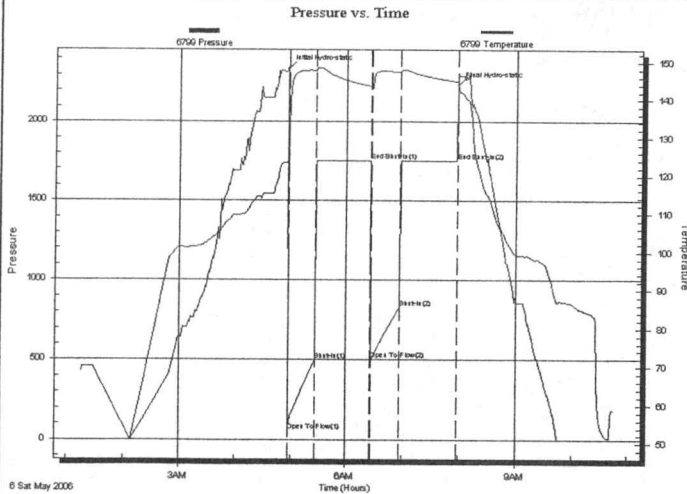
Wells # Z-1
33 30 7W Kingman KS
 Job Ticket: 24832 **DST#: 3**
 Test Start: 2006.05.06 @ 01:16:03

GENERAL INFORMATION:

Formation: **Viola/Simpson**
 Deviated: **No** Whipstock: ft (KB)
 Time Tool Opened: 04:57:03
 Time Test Ended: 10:46:03
 Test Type: Conventional Bottom Hole
 Tester: Gerald Adams
 Unit No: 36
 Interval: **4740.00 ft (KB) To 4755.00 ft (KB) (TVD)**
 Total Depth: 4755.00 ft (KB) (TVD)
 Reference Elevations: 1621.00 ft (KB)
 1612.00 ft (CF)
 Hole Diameter: 7.88 inches Hole Condition: Fair
 KB to GR/CF: 9.00 ft

Serial #: 6799 **Inside**
 Press@RunDepth: 826.31 psig @ 4741.00 ft (KB) Capacity: 7000.00 psig
 Start Date: 2006.05.06 End Date: 2006.05.06 Last Calib.: 2006.05.06
 Start Time: 01:16:08 End Time: 10:46:03 Time On Btm: 2006.05.06 @ 04:56:48
 Time Off Btm: 2006.05.06 @ 07:57:32

TEST COMMENT: IF Strong blow BOB in 3 1/2"
 ISI Fair blow Built to 10 1/4 in
 FF Strong blow BOB in 4"
 FSI Fair blow Built to 9 in



PRESSURE SUMMARY

Time (Min.)	Pressure (psig)	Temp (deg F)	Annotation
0	2337.44	123.80	Initial Hydro-static
1	54.38	122.91	Open To Flow (1)
30	495.05	147.81	Shut-In(1)
90	1750.33	143.64	End Shut-In(1)
90	501.72	142.98	Open To Flow (2)
120	826.31	147.43	Shut-In(2)
181	1749.33	144.94	End Shut-In(2)
181	2234.27	145.16	Final Hydro-static

Recovery

Length (ft)	Description	Volume (bbl)
1300.00	CSW 100%W	16.04
180.00	MSW 60%W 40%M	2.52
0.00	360' GIP	0.00
0.00	RW= .16@55deg.-59000 ppm	0.00
0.00		0.00

Gas Rates

Choke (inches)	Pressure (psig)	Gas Rate (Mcf/d)



**TRILOBITE
TESTING, INC.**

DRILL STEM TEST REPORT

TOOL DIAGRAM

Messenger Petroleum Inc
625 S Main St
Kingman KS 67068
ATTN: Jon Christensen

Wells # Z-1
33 30 7W Kingman KS
Job Ticket: 24832 **DST#: 3**
Test Start: 2006.05.06 @ 01:16:03

Tool Information

Drill Pipe:	Length: 4494.00 ft	Diameter: 3.80 inches	Volume: 63.04 bbl	Tool Weight: 2100.00 lb
Heavy Wt. Pipe:	Length: 0.00 ft	Diameter: 0.00 inches	Volume: 0.00 bbl	Weight set on Packer: 20000.00 lb
Drill Collar:	Length: 241.00 ft	Diameter: 2.25 inches	Volume: 1.19 bbl	Weight to Pull Loose: 80000.00 lb
			<u>Total Volume: 64.23 bbl</u>	Tool Chased 0.00 ft
Drill Pipe Above KB:	23.00 ft			String Weight: Initial 68000.00 lb
Depth to Top Packer:	4740.00 ft			Final 77000.00 lb
Depth to Bottom Packer:	ft			
Interval between Packers:	15.00 ft			
Tool Length:	43.00 ft			
Number of Packers:	2	Diameter: 6.75 inches		

Tool Comments:

Tool Description	Length (ft)	Serial No.	Position	Depth (ft)	Accum. Lengths
Shut In Tool	5.00			4717.00	
Hydraulic tool	5.00			4722.00	
Jars	5.00			4727.00	
Safety Joint	3.00			4730.00	
Packer	5.00			4735.00	28.00 Bottom Of Top Packer
Packer	5.00			4740.00	
Stubb	1.00			4741.00	
Recorder	0.00	6799	Inside	4741.00	
Perforations	11.00			4752.00	
Recorder	0.00	13400	Outside	4752.00	
Bullnose	3.00			4755.00	15.00 Bottom Packers & Anchor

Total Tool Length: 43.00



**TRILOBITE
TESTING, INC**

DRILL STEM TEST REPORT

FLUID SUMMARY

Messenger Petroleum Inc
625 S Main St
Kingman KS 67068
ATTN: Jon Christensen

Wells # Z-1
33 30 7W Kingman KS
Job Ticket: 24832 **DST#: 3**
Test Start: 2006.05.06 @ 01:16:03

Mud and Cushion Information

Mud Type: Gel Chem	Cushion Type:	Oil API:	deg API
Mud Weight: 9.00 lb/gal	Cushion Length: ft	Water Salinity:	ppm
Viscosity: 46.00 sec/qt	Cushion Volume: bbl		
Water Loss: 7.98 in ³	Gas Cushion Type:		
Resistivity: 0.00 ohm.m	Gas Cushion Pressure: psig		
Salinity: 6000.00 ppm			
Filter Cake: 0.02 inches			

Recovery Information

Recovery Table

Length ft	Description	Volume bbl
1300.00	CSW 100%W	16.040
180.00	MSW 60%W 40%M	2.525
0.00	360' GIP	0.000
0.00	RW= .16@55deg.-59000 ppm	0.000
0.00		0.000

Total Length: 1480.00 ft Total Volume: 18.565 bbl
Num Fluid Samples: 0 Num Gas Bombs: 0 Serial #: none
Laboratory Name: Laboratory Location:
Recovery Comments:

Serial #: 6799

Inside

Messenger Petroleum Inc

33 30 7W Kingman KS

DST Test Number: 3

Pressure vs. Time

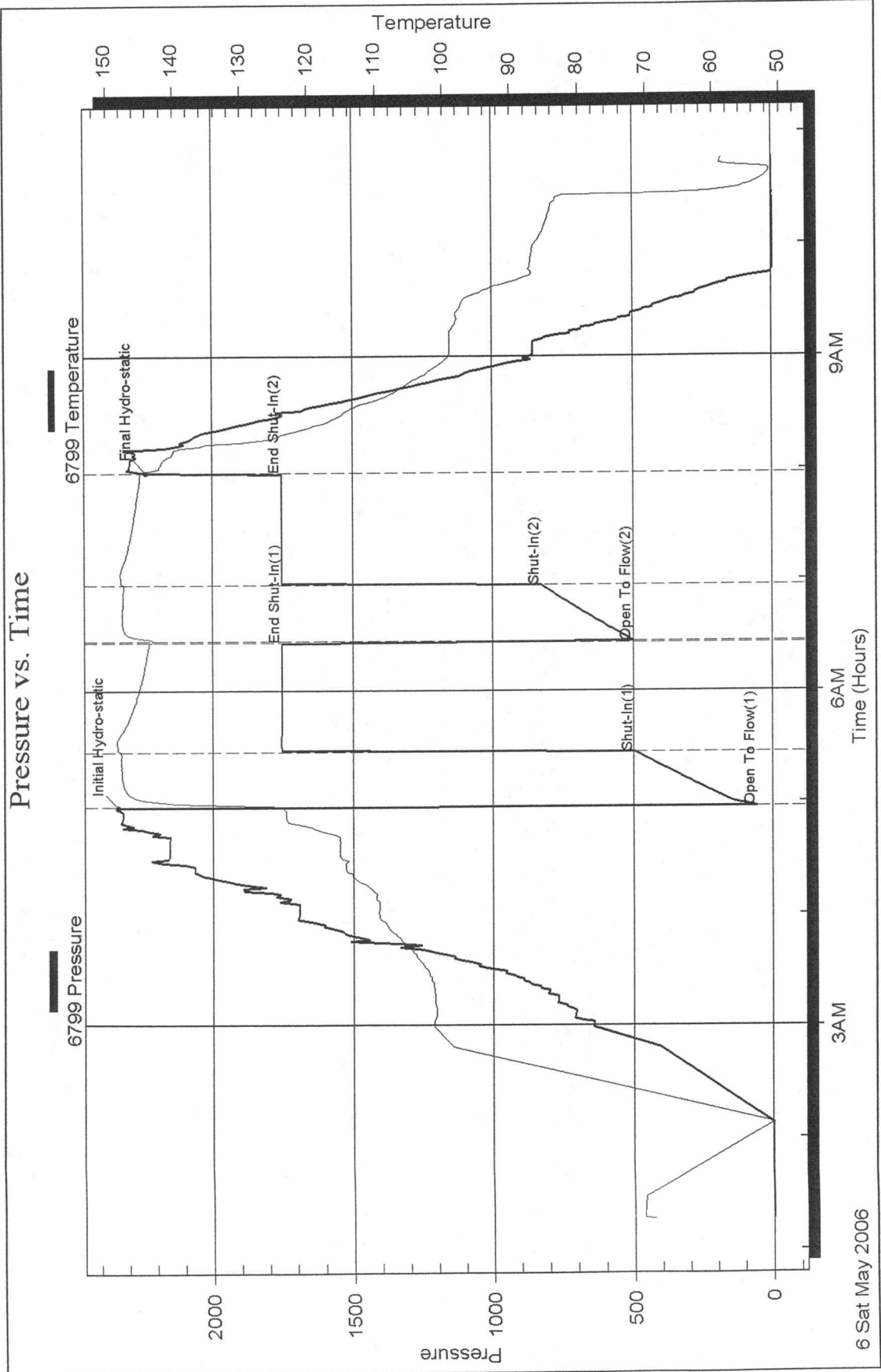


CHART PAGE

This is a photocopy of the actual AK-1 recorder chart.

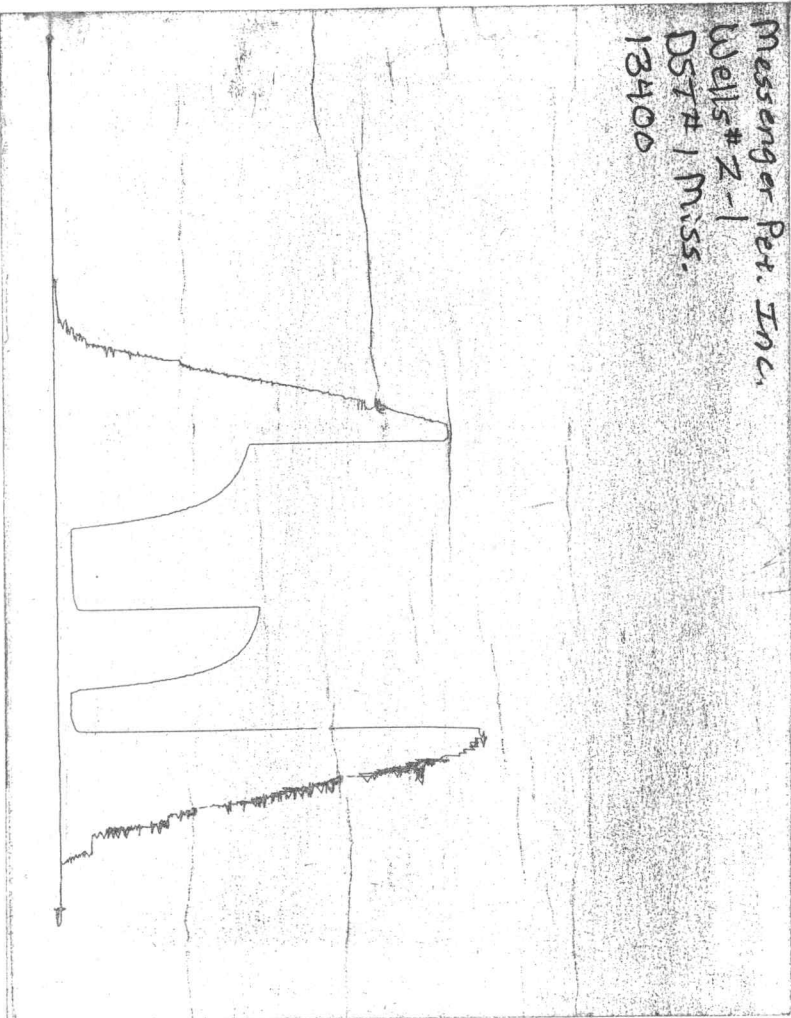


CHART PAGE

This is a photocopy of the actual AK-1 recorder chart.

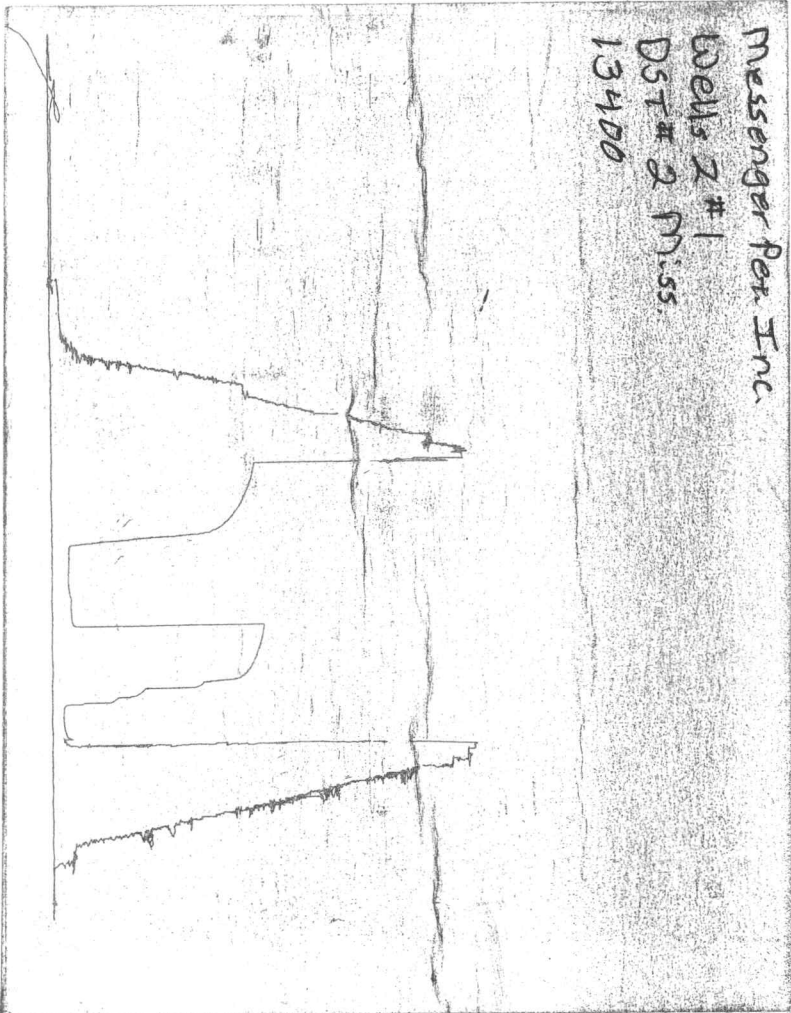


CHART PAGE

This is a photocopy of the actual AK-1 recorder chart.

Messenger Petroleum, Inc.
Wells Z# 1
DST # 3 Viola/Simpson
134DD

