



WESTERN TESTING CO., INC.

P. O. BOX 1599 - WICHITA, KANSAS 67201

DATE 3/2/81

McCoy Petroleum Corporation
One Main Place, Suite 410
Wichita, Kansas 67202

WELL REPORT NO

9531

UNIT NO

DISTRICT

FOR CUSTOMER'S USE ONLY

REGISTER NO

VOUCHER NO

TERMS APPROVED

PRICE APPROVED

CALCULATIONS CHECKED

ADJUSTMENTS

ACCOUNTING DISTRIBUTION

AUDITED

FINAL APPROVAL

YOUR ORDER NO.

OWNER

CONTRACTOR

WELL NO.

FARM

COUNTY

SECTION

TWP

RANGE

#1

Mark

Kingman

10

30S

7W

One drill stem test from 4113' to 4123'

(Test 1)

\$ 700.00

Mileage: Forty miles @ .75¢ per mile

30.00

\$ 730.00

POSTED

DISCOUNT

7.30

1% DISCOUNT ALLOWED ON THIS INVOICE IF PAID
BY THE 20TH OF THE FOLLOWING MONTH

PLEASE INCLUDE OUR INVOICE NUMBER
WITH YOUR REMITTANCE

INVOICE NUMBER

9531

SEND ALL REMITTANCES TO POST OFFICE BOX 1599, WICHITA, KANSAS 67201



WESTERN TESTING CO., INC.

FORMATION TESTING

TICKET NO

9531

P. O. BOX 1599 PHONE (316) 262-5861 WICHITA, KANSAS 67201

Elevation _____ Formation Mississippi Eff. Pay _____ Ft.

District Perth Date 3/2/81 Customer Order No. _____

COMPANY NAME McCoy Petroleum Corporation

ADDRESS Wichita, KS One Main Plaza, Suite 410 Wichita, KS 67202

LEASE AND WELL NO. MARK #1 COUNTY KINGMAN STATE KS Sec. 10 Twp. 30S Rge. 7W

Mail Invoice To SAME Co. Name _____ Address _____ No. Copies Requested Reg

Mail Charts To SAME Co. Name _____ Address _____ No. Copies Requested 5 Reg

Formation Test No. #1 Interval Tested from 4113 ft. to 4123 ft. Total Depth 4123 ft.

Packer Depth 4109 ft. Size 6 3/4 in. Packer Depth _____ ft. Size _____ in.

Packer Depth 4113 ft. Size 6 3/4 in. Packer Depth _____ ft. Size _____ in.

Depth of Selective Zone Set _____

Top Recorder Depth (Inside) 4114 ft. Recorder Number 5673 Cap. 5400

Bottom Recorder Depth (Outside) 4120 ft. Recorder Number 1565 Cap. 4900

Below Straddle Recorder Depth _____ ft. Recorder Number _____ Cap. _____

Drilling Contractor Sweetman Drill Collar Length 270 I. D. 2.2 in.

Mud Type Chemical Viscosity 51 Weight Pipe Length _____ I. D. _____ in.

Weight 9.3 Water Loss 6 cc. Drill Pipe Length 3663 I. D. 3.8 in.

Chlorides NC P.P.M. Test Tool Length 20 ft. Tool Size 5/200 in.

Jars: Make _____ Serial Number _____ Anchor Length 10 ft. Size 5/200 in.

Did Well Flow? NO Reversed Out NO Surface Choke Size 3/4 in. Bottom Choke Size 3/4 in.

Main Hole Size 7/8 in. Tool Joint Size 1 1/2 XH in.

Blow: Staying thru both flow periods

Recovered 1040 ft. of Gas In Pipe

Recovered 25 ft. of Gas Cut Mud (Rainbow)

Recovered _____ ft. of _____

Recovered _____ ft. of _____

Remarks: _____

Time On Location 7:00 A.M. Time Pick Up Tool 9:30 A.M. Time Off Location _____ A.M.

Time Set Packer (s) 11:48 A.M. Time Started Off Bottom 3:03 A.M. Maximum Temperature 116

Initial Hydrostatic Pressure _____ (A) 2244 P.S.I.

Initial Flow Period _____ Minutes 30 (B) 40 P.S.I. to (C) 40 P.S.I.

Initial Closed In Period _____ Minutes 45 (D) 737 P.S.I.

Final Flow Period _____ Minutes 60 (E) 54 P.S.I. to (F) 68 P.S.I.

Final Closed In Period _____ Minutes 60 (G) 806 P.S.I.

Final Hydrostatic Pressure _____ (H) 2126 P.S.I.

COMPANY TERMS

Western Testing Co., Inc. shall not be liable for damages of any kind to the property or personnel of the one for whom a test is made or for any loss suffered or sustained directly or indirectly through the use of its equipment, of its statements or opinion concerning the results of any test. Tools lost or damaged in the hole shall be paid at cost by the party for whom the test is made.

All charges subject to 12% interest after 60 days from date of invoice. Any expense incurred for collection will be added to the original amount.

Test Approved By H. Marie Girel Signature of Customer or his authorized representative

Western Representative Jeff Beauchamp Thank you

FIELD INVOICE

Open Hole Test	\$	<u>700.00</u>
Misrun	\$	
Straddle Test	\$	
Jars	\$	
Selective Zone	\$	
Safety Joint	\$	
Standby	\$	
Evaluation	\$	
Extra Packer	\$	
Circ. Sub.	\$	
Mileage <u>40</u>	\$	<u>30.00</u>
Fluid Sampler	\$	
Extra Charts	\$	
Insurance	\$	
TOTAL	\$	<u>730.00</u>

WESTERN TESTING CO., INC.

Pressure Data

Date 3-2 Recorder No. 5673 Capacity 5400 Test Ticket No. 9531 Location 4114 Ft. 116 °F
 Clock No. _____ Elevation _____ Well Temperature _____ °F

Point	Pressure		Time Given	Time Computed
A Initial Hydrostatic Mud	<u>2244</u>	P.S.I.	<u>11:48</u> AM	
B First Initial Flow Pressure	<u>41</u>	P.S.I.	<u>30</u> Mins.	<u>30</u> Mins.
C First Final Flow Pressure	<u>41</u>	P.S.I.	<u>45</u> Mins.	<u>45</u> Mins.
D Initial Closed-in Pressure	<u>732</u>	P.S.I.	<u>60</u> Mins.	<u>60</u> Mins.
E Second Initial Flow Pressure	<u>48</u>	P.S.I.	<u>60</u> Mins.	<u>60</u> Mins.
F Second Final Flow Pressure	<u>60</u>	P.S.I.		
G Final Closed-in Pressure	<u>806</u>	P.S.I.		
H Final Hydrostatic Mud	<u>2176</u>	P.S.I.		

PRESSURE BREAKDOWN

First Flow Pressure
 Breakdown: 6 Inc.
 of 5 mins. and a
 final inc. of 0 Min.

Initial Shut-In
 Breakdown: 15 Inc.
 of 3 mins. and a
 final inc. of 0 Min.

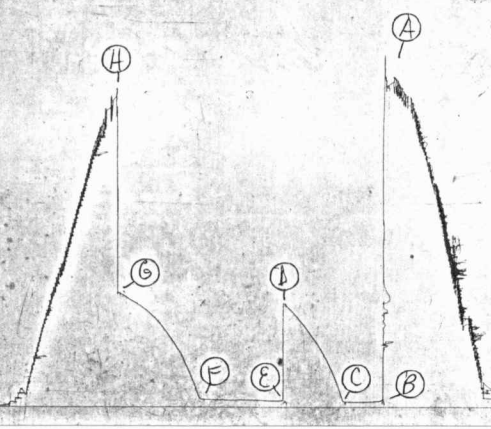
Second Flow Pressure
 Breakdown: 12 Inc.
 of 5 mins. and a
 final inc. of 0 Min.

Final Shut-In
 Breakdown: 20 Inc.
 of 3 mins. and a
 final inc. of 0 Min.

Point Mins.	Press.	Point Minutes	Press.	Point Minutes	Press.	Point Minutes	Press.
P 1	<u>41</u>	0	<u>41</u>	0	<u>48</u>	0	<u>60</u>
P 2		3	<u>117</u>	5	<u>48</u>	3	<u>112</u>
P 3		6	<u>197</u>	10	<u>48</u>	6	<u>189</u>
P 4		9	<u>260</u>	15	<u>52</u>	9	<u>254</u>
P 5		12	<u>320</u>	20	<u>55</u>	12	<u>314</u>
P 6		15	<u>369</u>	25		15	<u>380</u>
P 7	<u>41</u>	18	<u>418</u>	30		18	<u>424</u>
P 8		21	<u>467</u>	35		21	<u>470</u>
P 9		24	<u>503</u>	40		24	<u>511</u>
P10		27	<u>546</u>	45	<u>55</u>	27	<u>555</u>
P11		30	<u>582</u>	50	<u>57</u>	30	<u>590</u>
P12		33	<u>617</u>	55	<u>59</u>	33	<u>623</u>
P13		36	<u>653</u>	60	<u>60</u>	36	<u>653</u>
P14		39	<u>683</u>	65		39	<u>678</u>
P15		42	<u>710</u>	70		42	<u>699</u>
P16		45	<u>732</u>	75		45	<u>716</u>
P17		48		80		48	<u>738</u>
P18		51		85		51	<u>751</u>
P19		54		90		54	<u>773</u>
P20		57				57	<u>790</u>
		60				60	<u>806</u>

3673
DST #1

TKT # 4531
I



Company McCoy Petroleum Corporation Lease & Well No. Mark #1

Elevation ---- Formation Mississippi Effective Pay - Ft. Ticket No. 9531

Date 3/2/81 Sec. 10 Twp. 30S Range 7W County Kingman State Kansas

Test Approved by H. Deane Jirrels Western Representative Jeff Piotrowski-

Formation Test No. 1 Interval Tested from 4113 ft. to 4123 ft. Total Depth 4123 ft. Jeff Beauchamp

Packer Depth 4108 ft. Size 6 3/4 in. Packer Depth - ft. Size - in.

Packer Depth 4113 ft. Size 6 3/4 in. Packer Depth - ft. Size - in.

Depth of Selective Zone Set -

Top Recorder Depth (Inside) 4114 ft. Recorder Number 3673 Cap. 5400

Bottom Recorder Depth (Outside) 4120 ft. Recorder Number 1565 Cap. 4900

Below Straddle Recorder Depth - ft. Recorder Number - Cap. -

Drilling Contractor Sweetman Drilling Drill Collar Length 270 I. D. 2.2 in.

Mud Type chemical Viscosity 51 Weight Pipe Length - I. D. - in.

Weight 9.3 Water Loss 6 cc. Drill Pipe Length 3663 I. D. 3.8 in.

Chlorides N/C P.P.M. Test Tool Length 20 ft. Tool Size 5 1/2 OD in.

Jars: Make - Serial Number - Anchor Length 10 ft. Size 5 1/2 OD in.

Did Well Flow? NO Reversed Out NO Surface Choke Size 3/4 in. Bottom Choke Size 3/4 in.

Main Hole Size 7 7/8 in. Tool Joint Size 4 1/2 XH in.

Blow: Strong through both flow periods.

Recovered 1040 ft. of gas in pipe

Recovered 75 ft. of gas cut mud (rainbow)

Recovered ft. of

Recovered ft. of

Recovered ft. of

Remarks:

Time Set Packer(s) 11:48 A.M. Time Started Off Bottom 3:03 P.M. Maximum Temperature 116°

Initial Hydrostatic Pressure (A) 2244 P.S.I.

Initial Flow Period Minutes 30 (B) 41 P.S.I. to (C) 41 P.S.I.

Initial Closed In Period Minutes 45 (D) 732 P.S.I.

Final Flow Period Minutes 60 (E) 48 P.S.I. to (F) 60 P.S.I.

Final Closed In Period Minutes 60 (G) 806 P.S.I.

Final Hydrostatic Pressure (H) 2176 P.S.I.

WESTERN TESTING CO., INC.
Pressure Data

Date 3/2/81

Test Ticket No. 9531

Recorder No. 5673

Capacity 5400

Location 4114 Ft.

Clock No. -- Elevation --

Well Temperature 116 °F

Point	Pressure		Time Given	Time Computed
A Initial Hydrostatic Mud	<u>2244</u> P.S.I.	Open Tool	<u>11:48A</u> M	
B First Initial Flow Pressure	<u>41</u> P.S.I.	First Flow Pressure	<u>30</u> Mins.	<u>30</u> Mins.
C First Final Flow Pressure	<u>41</u> P.S.I.	Initial Closed-in Pressure	<u>45</u> Mins.	<u>45</u> Mins.
D Initial Closed-in Pressure	<u>732</u> P.S.I.	Second Flow Pressure	<u>60</u> Mins.	<u>60</u> Mins.
E Second Initial Flow Pressure	<u>48</u> P.S.I.	Final Closed-in Pressure	<u>60</u> Mins.	<u>60</u> Mins.
F Second Final Flow Pressure	<u>60</u> P.S.I.			
G Final Closed-in Pressure	<u>806</u> P.S.I.			
H Final Hydrostatic Mud	<u>2176</u> P.S.I.			

PRESSURE BREAKDOWN

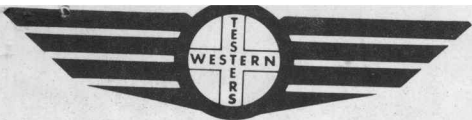
First Flow Pressure
Breakdown: 6 Inc.
of 5 mins. and a
final inc. of 0 Min.

Initial Shut-In
Breakdown: 15 Inc.
of 3 mins. and a
final inc. of 0 Min.

Second Flow Pressure
Breakdown: 12 Inc.
of 5 mins. and a
final inc. of 0 Min.

Final Shut-In
Breakdown: 20 Inc.
of 3 mins. and a
final inc. of 0 Min.

Point Mins.	First Flow Pressure		Initial Shut-In		Second Flow Pressure		Final Shut-In	
	Press.	Point Minutes	Press.	Point Minutes	Press.	Point Minutes	Press.	Point Minutes
P 1	<u>41</u>	<u>0</u>	<u>41</u>	<u>0</u>	<u>48</u>	<u>0</u>	<u>60</u>	<u>0</u>
P 2	<u>41</u>	<u>5</u>	<u>117</u>	<u>3</u>	<u>48</u>	<u>5</u>	<u>112</u>	<u>3</u>
P 3	<u>41</u>	<u>10</u>	<u>197</u>	<u>6</u>	<u>48</u>	<u>10</u>	<u>189</u>	<u>6</u>
P 4	<u>41</u>	<u>15</u>	<u>260</u>	<u>9</u>	<u>52</u>	<u>15</u>	<u>254</u>	<u>9</u>
P 5	<u>41</u>	<u>20</u>	<u>320</u>	<u>12</u>	<u>55</u>	<u>20</u>	<u>314</u>	<u>12</u>
P 6	<u>41</u>	<u>25</u>	<u>369</u>	<u>15</u>	<u>55</u>	<u>25</u>	<u>380</u>	<u>15</u>
P 7	<u>41</u>	<u>30</u>	<u>418</u>	<u>18</u>	<u>55</u>	<u>30</u>	<u>424</u>	<u>18</u>
P 8			<u>467</u>	<u>21</u>	<u>55</u>	<u>35</u>	<u>470</u>	<u>21</u>
P 9			<u>503</u>	<u>24</u>	<u>55</u>	<u>40</u>	<u>511</u>	<u>24</u>
P10			<u>546</u>	<u>27</u>	<u>55</u>	<u>45</u>	<u>555</u>	<u>27</u>
P11			<u>582</u>	<u>30</u>	<u>57</u>	<u>50</u>	<u>590</u>	<u>30</u>
P12			<u>617</u>	<u>33</u>	<u>59</u>	<u>55</u>	<u>623</u>	<u>33</u>
P13			<u>653</u>	<u>36</u>	<u>60</u>	<u>60</u>	<u>653</u>	<u>36</u>
P14			<u>683</u>	<u>39</u>			<u>678</u>	<u>39</u>
P15			<u>710</u>	<u>42</u>			<u>699</u>	<u>42</u>
P16			<u>732</u>	<u>45</u>			<u>716</u>	<u>45</u>
P17							<u>738</u>	<u>48</u>
P18							<u>751</u>	<u>51</u>
P19							<u>773</u>	<u>54</u>
P20							<u>790</u>	<u>57</u>
							<u>806</u>	<u>60</u>

**WESTERN TESTING CO., INC.**

P O BOX 1599 - WICHITA, KANSAS 67201

DATE 3/3/81

Magoy Petroleum Corporation
One Main Place, Suite 410
Wichita, Kansas 67202

WELL REPORT NO 9532
UNIT NO
DISTRICT

FOR CUSTOMER'S USE ONLY

REGISTER NO

VOUCHER NO

TERMS APPROVED

PRICE APPROVED

CALCULATIONS CHECKED

ADJUSTMENTS

ACCOUNTING DISTRIBUTION

AUDITED

FINAL APPROVAL

YOUR ORDER NO		OWNER		CONTRACTOR		AUDITED		FINAL APPROVAL	
WELL NO	FARM	COUNTY		SECTION	TWP	RANGE			
#1	Mark	Kingman		10	30S	7W			

One drill stem test from 4123' to 4140'

(Test 2)

\$ 700.00

Mileage: No Charge

POSTED

DISCOUNT	1% DISCOUNT ALLOWED ON THIS INVOICE IF PAID BY THE 20TH OF THE FOLLOWING MONTH	PLEASE INCLUDE OUR INVOICE NUMBER WITH YOUR REMITTANCE	INVOICE NUMBER
7.00			9532

SEND ALL REMITTANCES TO POST OFFICE BOX 1599, WICHITA, KANSAS 67201



WESTERN TESTING CO., INC.

FORMATION TESTING

TICKET NO: 9532

P. O. BOX 1599 PHONE (316) 262-5861

Elevation _____ Formation Miss Eff. Pay _____ Ft.

WICHITA, KANSAS 67201

District Pratt Date 3-3-81 Customer Order No. _____

COMPANY NAME McCoy Petroleum Corporation

ADDRESS Wichita KS One Main Plaza, Suite 410, Wichita, KS 67202

LEASE AND WELL NO. Mark #1 COUNTY Kingman STATE KS Sec. 10 Twp. 38S Rge. 7W

Mail Invoice To Same No. Copies Requested Reg

Co. Name _____ Address _____

Mail Charts To Same No. Copies Requested Reg

Formation Test No. 2 Interval Tested from 4123 ft. to 4140 ft. Total Depth 4140 ft.

Packer Depth 4118 ft. Size 6 3/4 in. Packer Depth _____ ft. Size _____ in.

Packer Depth 4123 ft. Size 6 3/4 in. Packer Depth _____ ft. Size _____ in.

Depth of Selective Zone Set _____

Top Recorder Depth (Inside) 4126 ft. Recorder Number 5673 Cap. 5400

Bottom Recorder Depth (Outside) 4137 ft. Recorder Number 1565 Cap. 4900

Below Straddle Recorder Depth _____ ft. Recorder Number _____ Cap. _____

Drilling Contractor Sweetman Drill Collar Length 270 I. D. 2.2 in.

Mud Type Starch Viscosity 47 Weight Pipe Length _____ I. D. _____ in.

Weight 9.3 Water Loss 6 cc. Drill Pipe Length 3833 I. D. 3.8 in.

Chlorides N/C P.P.M. Test Tool Length 20 ft. Tool Size 5 1/2 OD in.

Jars: Make _____ Serial Number _____ Anchor Length 17 ft. Size 5 1/2 OD in.

Did Well Flow? NO Reversed Out NO Surface Choke Size 3/4 in. Bottom Choke Size 3/4 in.

Main Hole Size 7 7/8 in. Tool Joint Size 4 1/2 FH in.

Blow: Strong thru Both flow period - GTS 25min IF - See Gss flow

Report

Recovered 90 ft. of Slightly Oil Cut Mud

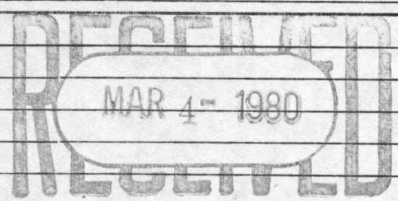
Recovered 120 ft. of Heavy Oil + Gss Cut Mud

Recovered 60 ft. of Very Heavy Oil Cut Mud

Recovered 60 ft. of Froggy Muddy Oil

Recovered _____ ft. of _____

Remarks: _____



Time On Location 9:00 A.M. Time Pick Up Tool 12:00 A.M. Time Off Location 7:00 A.M.

Time Set Packer(s) 1:30 P.M. Time Started Off Bottom 4:45 A.M. Maximum Temperature 119

Initial Hydrostatic Pressure (A) 2217 P.S.I.

Initial Flow Period Minutes 30 (B) 68 P.S.I. to (C) 81 P.S.I.

Initial Closed In Period Minutes 45 (D) 819 P.S.I.

Final Flow Period Minutes 90 (E) 81 P.S.I. to (F) 95 P.S.I.

Final Closed In Period Minutes 60 (G) 792 P.S.I.

Final Hydrostatic Pressure (H) 2108 P.S.I.

COMPANY TERMS

Western Testing Co., Inc. shall not be liable for damages of any kind to the property or personnel of the one for whom a test is made or for any loss suffered or sustained directly or indirectly through the use of its equipment, of its statements or opinion concerning the results of any test. Tools lost or damaged in the hole shall be paid at cost by the party for whom the test is made.

All charges subject to 12% interest after 60 days from date of invoice. Any expense incurred for collection will be added to the original amount.

Test Approved By A. Glone Signature of Customer or his authorized representative

Western Representative [Signature] Thank you

FIELD INVOICE

Open Hole Test	\$ <u>700.00</u>
Misrun	\$ _____
Straddle Test	\$ _____
Jars	\$ _____
Selective Zone	\$ _____
Safety Joint	\$ _____
Standby	\$ _____
Evaluation	\$ _____
Extra Packer	\$ _____
Circ. Sub.	\$ _____
Mileage	\$ <u>N/A</u>
Fluid Sampler	\$ _____
Extra Charts	\$ _____
Insurance	\$ _____
TOTAL	\$ <u>700.00</u>



No 2287

GAS FLOW REPORT

Date 3-3-81 Ticket 9532 Company McCoy Pet
 Well Name and No. Mark #1 Dst No. 2 Interval Tested 4/23-40
 County Kingman State KS Sec. 10 Twp. 30s Rg. 7w

Time Gauge in Min.	P.S.I. on Merla Orifice Well Tester	Size of Orifice	P.S.I. on Pitot Tester	P.S.I. on Side Static Tester	Description of Flow
PRE FLOW					
30	10	1/2			19,900 cfpd

SECOND FLOW					
5	10	1/2			19,900 cfpd
10					}
15					
90	10	1/2			19,900

GAS BOTTLE

Serial No. _____ Date Bottle Filled _____ Date to be Invoiced _____

Requisition and Provisions for high pressure stainless steel gas bottles. Western Testing Co., Inc. shall not be liable for damage of any kind to property or personnel of the one whom gas bottle is filled or for any loss suffered or sustained directly or indirectly through the use of these bottles. By signing of this ticket showing receipt of a gas testing bottle, the undersigned agrees for himself and as agent for operator, to return this bottle to Western Testing Co., Inc. within thirty (30) days free of charge, or be invoiced in the amount of \$75.00 (total charge). Should valve or seal plug be missing or damaged beyond repair, operator shall be invoiced for repairs at our invoiced price.

All charges subject to 1 1/2% per month, equal to 18% interest per annum after 30 days from date of invoice. Any expense incurred for collection will be added to the original amount.

COMPANY'S NAME _____

Authorized by _____

WESTERN TESTING CO., INC.

Pressure Data

Date 3-3

Test Ticket No. 9532

Recorder No. 5673

Capacity 5400

Location 4126 Ft.

Clock No. _____ Elevation _____

Well Temperature 119 °F

Point	Pressure	Time Given	Time Computed
A Initial Hydrostatic Mud	<u>2214</u> P.S.I.	<u>1:00</u> A.M.	
B First Initial Flow Pressure	<u>68</u> P.S.I.	<u>30</u> Mins.	<u>30</u> Mins.
C First Final Flow Pressure	<u>79</u> P.S.I.	<u>45</u> Mins.	<u>45</u> Mins.
D Initial Closed-in Pressure	<u>836</u> P.S.I.	<u>90</u> Mins.	<u>90</u> Mins.
E Second Initial Flow Pressure	<u>71</u> P.S.I.	<u>60</u> Mins.	<u>63</u> Mins.
F Second Final Flow Pressure	<u>101</u> P.S.I.		
G Final Closed-in Pressure	<u>792</u> P.S.I.		
H Final Hydrostatic Mud	<u>2111</u> P.S.I.		

PRESSURE BREAKDOWN

First Flow Pressure
Breakdown: 6 Inc.
of 5 mins. and a
final inc. of 0 Min.

Initial Shut-In
Breakdown: 15 Inc.
of 3 mins. and a
final inc. of 0 Min.

Second Flow Pressure
Breakdown: 18 Inc.
of 5 mins. and a
final inc. of 0 Min.

Final Shut-In
Breakdown: 21 Inc.
of 3 mins. and a
final inc. of 0 Min.

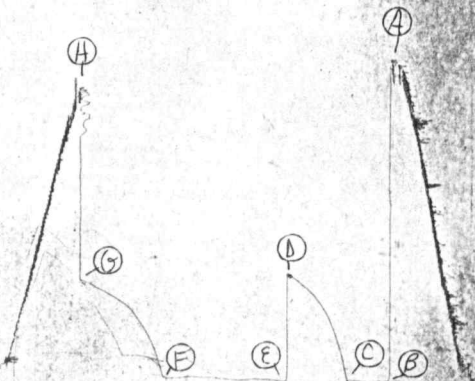
Point Mins.	Press.	Point Minutes	Press.	Point Minutes	Press.	Point Minutes	Press.
P 1	<u>68</u>	0	<u>79</u>	0	<u>71</u>	0	<u>101</u>
P 2	<u>68</u>	3	<u>191</u>	5	<u>77</u>	3	<u>169</u>
P 3	<u>68</u>	6	<u>303</u>	10	<u>82</u>	6	<u>254</u>
P 4	<u>68</u>	9	<u>402</u>	15	<u>85</u>	9	<u>336</u>
P 5	<u>71</u>	12	<u>481</u>	20	<u>87</u>	12	<u>393</u>
P 6	<u>77</u>	15	<u>547</u>	25	<u>89</u>	15	<u>443</u>
P 7	<u>79</u>	18	<u>598</u>	30	<u>85</u>	18	<u>489</u>
P 8		21	<u>637</u>	35	<u>84</u>	21	<u>533</u>
P 9		24	<u>683</u>	40	<u>86</u>	24	<u>571</u>
P10		27	<u>708</u>	45	<u>90</u>	27	<u>601</u>
P11		30	<u>732</u>	50	<u>96</u>	30	<u>623</u>
P12		33	<u>760</u>	55	<u>101</u>	33	<u>642</u>
P13		36	<u>787</u>	60	<u>103</u>	36	<u>664</u>
P14		39	<u>809</u>	65	<u>104</u>	39	<u>683</u>
P15		42	<u>828</u>	70	<u>107</u>	42	<u>702</u>
P16		45	<u>836</u>	75	<u>104</u>	45	<u>719</u>
P17		48		80	<u>97</u>	48	<u>730</u>
P18		51		85	<u>97</u>	51	<u>746</u>
P19		54		90	<u>101</u>	54	<u>763</u>
P20		57				57	<u>776</u>
		60				60	<u>790</u>
						<u>63</u>	<u>792</u>

5673

DST # 2

TKT # 9532

I



Company McCoy Petroleum Corporation Lease & Well No. Mark #1
 Elevation -- Formation Mississippi Effective Pay - Ft. Ticket No. 9532
 Date 3/3/81 Sec. 10 Twp. 30S Range 7W County Kingman State Kansas
 Test Approved by H. Deane Jirrels Western Representative Jeff Piotrowski

Formation Test No. 2 Interval Tested from 4123 ft. to 4140 ft. Total Depth 4140 ft.
 Packer Depth 4118 ft. Size 6 3/4 in. Packer Depth - ft. Size - in.
 Packer Depth 4123 ft. Size 6 3/4 in. Packer Depth - ft. Size - in.
 Depth of Selective Zone Set -

Top Recorder Depth (Inside) 4126 ft. Recorder Number 5673 Cap. 5400
 Bottom Recorder Depth (Outside) 4137 ft. Recorder Number 1565 Cap. 4500
 Below Straddle Recorder Depth - ft. Recorder Number - Cap. -

Drilling Contractor Sweetman Drilling Drill Collar Length 270 I. D. 2.2 in.
 Mud Type starch Viscosity 47 Weight Pipe Length - I. D. - in.
 Weight 9.3 Water Loss 6 cc. Drill Pipe Length 3833 I. D. 3.8 in.
 Chlorides N/C P.P.M. Test Tool Length 20 ft. Tool Size 5 1/2 OD in.
 Jars: Make - Serial Number - Anchor Length 17 ft. Size 5 1/2 OD in.
 Did Well Flow? No Reversed Out No Surface Choke Size 3/4 in. Bottom Choke Size 3/4 in.
 Main Hole Size 7 7/8 in. Tool Joint Size 4 1/2 FH in.

Blow: Strong throughout both flow periods. Gas to surface twenty five minutes in initial flow period. See attached sheet for gas measurements.

Recovered 90 ft. of slightly oil cut mud
 Recovered 120 ft. of heavily oil and gas cut mud
 Recovered 60 ft. of very heavy oil cut mud
 Recovered 60 ft. of froggy muddy oil
 Recovered ft. of

Remarks:

Time Set Packer(s) 1:00 ~~P.M.~~ A.M. Time Started Off Bottom 4:45 ~~P.M.~~ A.M. Maximum Temperature 119°
 Initial Hydrostatic Pressure 2214 P.S.I. (A)
 Initial Flow Period 30 Minutes (B) 68 P.S.I. to (C) 79 P.S.I.
 Initial Closed In Period 45 Minutes (D) 836 P.S.I.
 Final Flow Period 90 Minutes (E) 71 P.S.I. to (F) 101 P.S.I.
 Final Closed In Period 63 Minutes (G) 792 P.S.I.
 Final Hydrostatic Pressure 2111 P.S.I. (H)

GAS FLOW REPORT

Date 3/3/81 Ticket 9532 Company McCoy Petroleum Corporation
 Well Name and No. Mark #1 Dst No. 2 Interval Tested 4123'-4140'
 County Kingman State Kansas Sec. 10 Twp. 30S Rg. 7W

Time Gauge Pre-Flow	Time Gauge in Min.	P.S.I. on Merla Orifice Well Tester	P.S.I. on Pitot Tester	P.S.I. on Side Static Tester	P.S.I. on U-Tube Tester	Description of Flow
PRE FLOW						
	30 min.	10" of water		1/2" orifice		19,900 CFPD

SECOND FLOW						
	5 min.	10" of water		1/2" orifice		19,900 CFPD
	10 min.	10" of water		1/2" orifice		19,900 CFPD
	15 min.	10" of water		1/2" orifice		19,900 CFPD
	20 min.	10" of water		1/2" orifice		19,900 CFPD
	30 min.	10" of water		1/2" orifice		19,900 CFPD
	40 min.	10" of water		1/2" orifice		19,900 CFPD
	50 min.	10" of water		1/2" orifice		19,900 CFPD
	60 min.	10" of water		1/2" orifice		19,900 CFPD
	70 min.	10" of water		1/2" orifice		19,900 CFPD
	80 min.	10" of water		1/2" orifice		19,900 CFPD
	90 min.	10" of water		1/2" orifice		19,900 CFPD

GAS BOTTLE

Serial No. -- Date Bottle Filled --- Date to be Invoiced 3/3/81

Requisition and Provisions for high pressure stainless steel gas bottles. Western Testing Co., Inc. shall not be liable for damage of any kind to property or personnel of the one whom gas bottle is filled or for any loss suffered or sustained directly or indirectly through the use of these bottles. By signing of this ticket showing receipt of a gas testing bottle, the undersigned agrees for himself and as agent for operator, to return this bottle to Western Testing Co., Inc. within thirty (30) days free of charge, or be invoiced in the amount of \$75.00 (total charge). Should valve or seal plug be missing or damaged beyond repair, operator shall be invoiced for repairs at our invoiced price.

All charges subject to 1 1/2% per month, equal to 18% interest per annum after 30 days from date of invoice. Any expense incurred for collection will be added to the original amount.

COMPANY'S NAME McCoy Petroleum Corporation
H. Deane Jirrels
 Authorized by _____

WESTERN TESTING CO., INC.

Pressure Data

Date 3/3/81 Recorder No. 5673 Capacity 5400 Test Ticket No. 9532
 Clock No. -- Elevation -- Location 4126 Well Temperature 119 °F

Point	Pressure		Time Given	Time Computed
A. Initial Hydrostatic Mud	2214	P.S.I.	1:00A	M
B. First Initial Flow Pressure	68	P.S.I.	30	Mins. 30 Mins.
C. First Final Flow Pressure	79	P.S.I.	45	Mins. 45 Mins.
D. Initial Closed-in Pressure	836	P.S.I.	90	Mins. 90 Mins.
E. Second Initial Flow Pressure	71	P.S.I.	60	Mins. 63 Mins.
F. Second Final Flow Pressure	101	P.S.I.		
G. Final Closed-in Pressure	792	P.S.I.		
H. Final Hydrostatic Mud	2111	P.S.I.		

PRESSURE BREAKDOWN

First Flow Pressure
 Breakdown: 6 Inc.
 of 5 mins. and a
 final inc. of 0 Min.

Initial Shut-In
 Breakdown: 15 Inc.
 of 3 mins. and a
 final inc. of 0 Min.

Second Flow Pressure
 Breakdown: 18 Inc.
 of 5 mins. and a
 final inc. of 0 Min.

Final Shut-In
 Breakdown: 21 Inc.
 of 3 mins. and a
 final inc. of 0 Min.

Point Mins.	Press.	Point Minutes	Press.	Point Minutes	Press.	Point Minutes	Press.
P 1 <u>0</u>	<u>68</u>	<u>0</u>	<u>79</u>	<u>0</u>	<u>71</u>	<u>0</u>	<u>101</u>
P 2 <u>5</u>	<u>68</u>	<u>3</u>	<u>191</u>	<u>5</u>	<u>77</u>	<u>3</u>	<u>169</u>
P 3 <u>10</u>	<u>68</u>	<u>6</u>	<u>303</u>	<u>10</u>	<u>82</u>	<u>6</u>	<u>254</u>
P 4 <u>15</u>	<u>68</u>	<u>9</u>	<u>402</u>	<u>15</u>	<u>85</u>	<u>9</u>	<u>336</u>
P 5 <u>20</u>	<u>71</u>	<u>12</u>	<u>481</u>	<u>20</u>	<u>87</u>	<u>12</u>	<u>393</u>
P 6 <u>25</u>	<u>77</u>	<u>15</u>	<u>547</u>	<u>25</u>	<u>89</u>	<u>15</u>	<u>443</u>
P 7 <u>30</u>	<u>79</u>	<u>18</u>	<u>598</u>	<u>30</u>	<u>85</u>	<u>18</u>	<u>489</u>
P 8		<u>21</u>	<u>637</u>	<u>35</u>	<u>84</u>	<u>21</u>	<u>533</u>
P 9		<u>24</u>	<u>683</u>	<u>40</u>	<u>86</u>	<u>24</u>	<u>571</u>
P10		<u>27</u>	<u>708</u>	<u>45</u>	<u>90</u>	<u>27</u>	<u>601</u>
P11		<u>30</u>	<u>732</u>	<u>50</u>	<u>96</u>	<u>30</u>	<u>623</u>
P12		<u>33</u>	<u>760</u>	<u>55</u>	<u>101</u>	<u>33</u>	<u>642</u>
P13		<u>36</u>	<u>787</u>	<u>60</u>	<u>103</u>	<u>36</u>	<u>664</u>
P14		<u>39</u>	<u>809</u>	<u>65</u>	<u>104</u>	<u>39</u>	<u>683</u>
P15		<u>42</u>	<u>828</u>	<u>70</u>	<u>107</u>	<u>42</u>	<u>702</u>
P16		<u>45</u>	<u>836</u>	<u>75</u>	<u>104</u>	<u>45</u>	<u>719</u>
P17				<u>80</u>	<u>97</u>	<u>48</u>	<u>730</u>
P18				<u>85</u>	<u>97</u>	<u>51</u>	<u>746</u>
P19				<u>90</u>	<u>101</u>	<u>54</u>	<u>763</u>
P20						<u>57</u>	<u>776</u>
						<u>60</u>	<u>790</u>
						<u>63</u>	<u>792</u>

**WESTERN TESTING CO., INC.**

P.O. BOX 1599 — WICHITA, KANSAS 67201

WELL REPORT NO

6818

UNIT NO

DISTRICT

DATE

3/3/81

McCoy Petroleum Corporation
Suite 410, One Main Place
Wichita, Kansas 67202

FOR CUSTOMER'S USE ONLY

REGISTER NO

VOUCHER NO

TERMS APPROVED

PRICE APPROVED

CALCULATIONS CHECKED

ADJUSTMENTS

ACCOUNTING DISTRIBUTION

AUDITED

FINAL APPROVAL

YOUR ORDER NO	OWNER	CONTRACTOR			
WELL NO	FARM	COUNTY	SECTION	TWP	RANGE

A1

Mark

Kingman

10

30S

7W

One drill stem test from 4155' to 4180'

(Test 3)

\$ 700.00

Mileage: Sixty-seven miles @ .75¢ per mile

50.25

\$ 750.25**POSTED**

DISCOUNT

7.50

1% DISCOUNT ALLOWED ON THIS INVOICE IF PAID
BY THE 20TH OF THE FOLLOWING MONTHPLEASE INCLUDE OUR INVOICE NUMBER
WITH YOUR REMITTANCE

INVOICE NUMBER

6818

SEND ALL REMITTANCES TO POST OFFICE BOX 1599, WICHITA, KANSAS 67201



WESTERN TESTING CO., INC.

FORMATION TESTING

TICKET NO 6818

P. O. BOX 1599 WICHITA, KANSAS 67201

Elevation 1465 KB Formation Mississippi Eff. Pay Ft.

District Augustas Date Mar 3, 1981 Customer Order No.

COMPANY NAME McCoy Petroleum Corporation ADDRESS 410 One Main Place Wichita, Ks. 67202

LEASE AND WELL NO. Mark #1 COUNTY Kingman STATE Kansas Sec. 10 Twp 30S Rge 7W

Mail Invoice To Same Co. Name Same Address No. Copies Requested 1

Mail Charts To Same Address No. Copies Requested 5

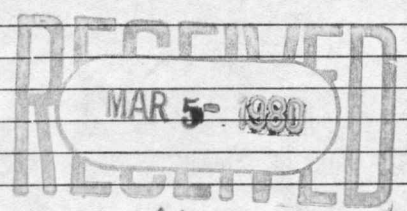
Formation Test No. 3 Interval Tested from 4155 ft. to 4180 ft. Total Depth 4180 ft. Packer Depth 4160 ft. Size 6 3/4 in. Packer Depth 4165 ft. Size 6 3/4 in.

Top Recorder Depth (Inside) AP 4154 ft. Recorder Number 3354 Cap. 4200 Bottom Recorder Depth (Outside) 4175 ft. Recorder Number 13268 Cap. 4225 Below Straddle Recorder Depth - ft. Recorder Number - Cap. -

Drilling Contractor Sweetman Delp Rig #1 Mud Type Starch Viscosity 48 Weight 9.3 Water Loss 11.8 cc. Chlorides NA P.P.M. Jars: Make - Serial Number - Did Well Flow? Yes Reversed Out NO Drill Collar Length 290 I. D. 2 1/4 in. Weight Pipe Length - I. D. - in. Drill Pipe Length 385.2 I. D. 3.8 in. Test Tool Length 23 ft. Tool Size 5 in. Anchor Length 25 ft. Size 4 1/2 in. Surface Choke Size 3/4 in. Bottom Choke Size 3/4 in. Main Hole Size 7/8 in. Tool Joint Size 4 1/2 XH in.

Blow: Strong GAS to Surface 31 min See attached Das sheet 12.5 mcfpd

Recovered 90 ft. of Frog Emulsion Recovered 120 ft. of Frog Oil Recovered 180 ft. of Clean Oil Recovered ft. of Recovered ft. of Remarks: 390 total Fluid



ON LOC 2:30 pm Pick up tool 4:00 pm Job complete

Table with 4 columns: Time Set Packer(s), P.M., Time Started Off Bottom, P.M., Maximum Temperature. Rows include Initial Hydrostatic Pressure, Initial Flow Period, Initial Closed In Period, Final Flow Period, Final Closed In Period, Final Hydrostatic Pressure.

COMPANY TERMS

Western Testing Co., Inc. shall not be liable for damages of any kind to the property or personnel of the one for whom a test is made or for any loss suffered or sustained directly or indirectly through the use of its equipment, of its statements or opinion concerning the results of any test.

All charges subject to 12% interest after 60 days from date of invoice. Any expense incurred for collection will be added to the original amount.

Test Approved By [Signature] Signature of Customer or his authorized representative

Western Representative Allen Edgington

FIELD INVOICE

Table with 2 columns: Item, Amount. Items include Open Hole Test, Misrun, Straddle Test, Jars, Selective Zone, Safety Joint, Standby, Evaluation, Extra Packer, Circ. Sub., Mileage, Fluid Sampler, Extra Charts, TOTAL.



GAS FLOW REPORT

Nº 1484

Date 3-3-81 Ticket 6818 Company M^o Coy Petroleum Corporation
 Well Name and No. MARK #1 Dst No. 3 Interval Tested 4155 - 80'
 County Kingman State Ks. Sec. 10 Twp. 30S Rg. 7W

Time Gauge in Min.	P.S.I. on Merla Orifice Well Tester	Size of Orifice	P.S.I. on Pitot Tester	P.S.I. on Side Static Tester	Description of Flow
--------------------	-------------------------------------	-----------------	------------------------	------------------------------	---------------------

PRE FLOW

30					No gas to SURFACE 1 st Flow
----	--	--	--	--	--

Tow
 GAS to SURFACE 3 min.
 IN. of H₂O

SECOND FLOW

40	20	1/4			7,510	cfpm
45	6	1/2			15,400	
50	4	"			12,500	
55	8	"			17,200	
60	4	"			12,500	
65	7	"			16,700	
70	"	"			"	
75	4	"			12,500	
80	"	"			"	
85	"	"			"	
90	"	"			"	
95	"	"			"	
100	"	"			"	
105	"	"			"	
110	"	"			"	

GAS BOTTLE

Serial No. _____ Date Bottle Filled _____ Date to be Invoiced _____

Requisition and Provisions for high pressure stainless steel gas bottles. Western Testing Co., Inc. shall not be liable for damage of any kind to property or personnel of the one whom gas bottle is filled or for any loss suffered or sustained directly or indirectly through the use of these bottles. By signing of this ticket showing receipt of a gas testing bottle, the undersigned agrees for himself and as agent for operator, to return this bottle to Western Testing Co., Inc. within thirty (30) days free of charge, or be invoiced in the amount of \$75.00 (total charge). Should valve or seal plug be missing or damaged beyond repair, operator shall be invoiced for repairs at our invoiced price.

All charges subject to 1% per month, equal to 12% interest per annum after 30 days from date of invoice. Any expense incurred for collection will be added to the original amount.

COMPANY'S NAME _____

Authorized by _____

WESTERN TESTING CO., INC.

Pressure Data

Date 3-3 Recorder No. 3354 Capacity 4200 Test Ticket No. 6818
 Clock No. Elevation 1465 KB Location 4154 Ft. Well Temperature 130 °F

Point	Pressure		Time Given	Time Computed
A Initial Hydrostatic Mud	<u>2226</u>	P.S.I.	<u>6:00 P</u>	<u>M</u>
B First Initial Flow Pressure	<u>30</u>	P.S.I.	<u>30</u> Mins.	<u>30</u> Mins.
C First Final Flow Pressure	<u>55</u>	P.S.I.	<u>45</u> Mins.	<u>45</u> Mins.
D Initial Closed-in Pressure	<u>1030</u>	P.S.I.	<u>90</u> Mins.	<u>90</u> Mins.
E Second Initial Flow Pressure	<u>58</u>	P.S.I.	<u>60</u> Mins.	<u>60</u> Mins.
F Second Final Flow Pressure	<u>121</u>	P.S.I.		
G Final Closed-in Pressure	<u>994</u>	P.S.I.		
H Final Hydrostatic Mud	<u>2093</u>	P.S.I.		

PRESSURE BREAKDOWN

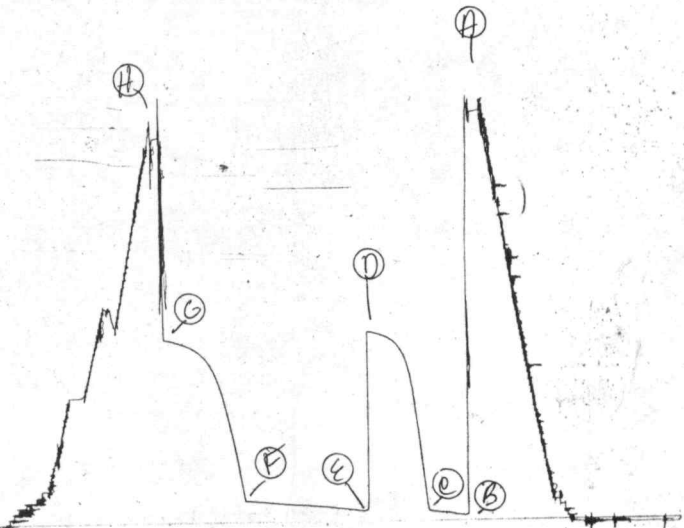
<p>First Flow Pressure Breakdown: <u>6</u> Inc. of <u>5</u> mins. and a final inc. of <u>0</u> Min.</p>	<p>Initial Shut-In Breakdown: <u>15</u> Inc. of <u>3</u> mins. and a final inc. of <u>0</u> Min.</p>	<p>Second Flow Pressure Breakdown: <u>18</u> Inc. of <u>5</u> mins. and a final inc. of <u>0</u> Min.</p>	<p>Final Shut-In Breakdown: <u>20</u> Inc. of <u>3</u> mins. and a final inc. of <u>0</u> Min.</p>
---	--	---	--

Point Mins.	Press.	Point Minutes	Press.	Point Minutes	Press.	Point Minutes	Press.
P 1	<u>0</u>	<u>0</u>	<u>30</u>	<u>0</u>	<u>55</u>	<u>0</u>	<u>121</u>
P 2	<u>5</u>	<u>3</u>	<u>34</u>	<u>3</u>	<u>268</u>	<u>3</u>	<u>251</u>
P 3	<u>10</u>	<u>6</u>	<u>38</u>	<u>6</u>	<u>426</u>	<u>6</u>	<u>373</u>
P 4	<u>15</u>	<u>9</u>	<u>46</u>	<u>9</u>	<u>584</u>	<u>9</u>	<u>468</u>
P 5	<u>20</u>	<u>12</u>	<u>49</u>	<u>12</u>	<u>726</u>	<u>12</u>	<u>568</u>
P 6	<u>25</u>	<u>15</u>	<u>52</u>	<u>15</u>	<u>823</u>	<u>15</u>	<u>660</u>
P 7	<u>30</u>	<u>18</u>	<u>55</u>	<u>18</u>	<u>888</u>	<u>18</u>	<u>730</u>
P 8	<u>35</u>	<u>21</u>		<u>21</u>	<u>930</u>	<u>21</u>	<u>787</u>
P 9	<u>40</u>	<u>24</u>		<u>24</u>	<u>958</u>	<u>24</u>	<u>829</u>
P10	<u>45</u>	<u>27</u>		<u>27</u>	<u>979</u>	<u>27</u>	<u>869</u>
P11	<u>50</u>	<u>30</u>		<u>30</u>	<u>994</u>	<u>30</u>	<u>897</u>
P12	<u>55</u>	<u>33</u>		<u>33</u>	<u>1004</u>	<u>33</u>	<u>914</u>
P13	<u>60</u>	<u>36</u>		<u>36</u>	<u>1013</u>	<u>36</u>	<u>932</u>
P14		<u>39</u>		<u>39</u>	<u>1021</u>	<u>39</u>	<u>947</u>
P15		<u>42</u>		<u>42</u>	<u>1025</u>	<u>42</u>	<u>956</u>
P16		<u>45</u>		<u>45</u>	<u>1030</u>	<u>45</u>	<u>965</u>
P17		<u>48</u>		<u>48</u>		<u>48</u>	<u>975</u>
P18		<u>51</u>		<u>51</u>		<u>51</u>	<u>981</u>
P19		<u>54</u>		<u>54</u>		<u>54</u>	<u>987</u>
P20		<u>57</u>		<u>57</u>		<u>57</u>	<u>992</u>
		<u>60</u>		<u>60</u>		<u>60</u>	<u>994</u>

PKT # 6818

I

3354



Company McCoy Petroleum Corporation Lease & Well No. Mark #1
 Elevation 1465 Kelly Bushing Mississippi Effective Pay - Ft. Ticket No. 6818
 Date 3/3/81 Sec. 10 Twp. 30S Range 7W County Kingman State Kansas
 Test Approved by H. Deane Jirrels Western Representative Allen Edgington

Formation Test No. 3 Interval Tested from 4155 ft. to 4180 ft. Total Depth 4180 ft.
 Packer Depth 4160 ft. Size 6 3/4 in. Packer Depth - ft. Size - in.
 Packer Depth 4165 ft. Size 6 3/4 in. Packer Depth - ft. Size - in.
 Depth of Selective Zone Set -

Top Recorder Depth (Inside)	<u>4154</u> ft.	Recorder Number	<u>3354</u>	Cap.	<u>4200</u>
Bottom Recorder Depth (Outside)	<u>4175</u> ft.	Recorder Number	<u>13268</u>	Cap.	<u>4225</u>
Below Straddle Recorder Depth	<u>-</u> ft.	Recorder Number	<u>-</u>	Cap.	<u>-</u>
Drilling Contractor	<u>Sweetman Drilling Rig #1</u>		Drill Collar Length	<u>290</u>	I. D. <u>2 1/4</u> in.
Mud Type	<u>starch</u>	Viscosity	<u>48</u>	Weight Pipe Length	<u>-</u> I. D. <u>-</u> in.
Weight	<u>9.3</u>	Water Loss	<u>11.8</u> cc.	Drill Pipe Length	<u>3852</u> I. D. <u>3.8</u> in.
Chlorides	<u>N/A</u>	P.P.M.		Test Tool Length	<u>23</u> ft. Tool Size <u>5</u> in.
Jars: Make	<u>-</u>	Serial Number	<u>-</u>	Anchor Length	<u>25</u> ft. Size <u>4 1/2</u> in.
Did Well Flow?	<u>Yes</u>	Reversed Out	<u>No</u>	Surface Choke Size	<u>3/4</u> in. Bottom Choke Size <u>3/4</u> in.
				Main Hole Size	<u>7 7/8</u> in. Tool Joint Size <u>4 1/2</u> in.

Blow: Strong. Gas to surface in thirty-one minutes. See attached sheet for gas measurements.

Recovered 90 ft. of frog emulsion
 Recovered 120 ft. of frog oil
 Recovered 180 ft. of clean oil
 Recovered _____ ft. of _____
 Recovered _____ ft. of _____

Remarks: _____

Time Set Packer(s)	<u>6:00</u>	AM P.M.	Time Started Off Bottom	<u>9:45</u>	AM P.M.	Maximum Temperature	<u>130°</u>
Initial Hydrostatic Pressure			(A)	<u>2226</u>	P.S.I.		
Initial Flow Period	Minutes	<u>30</u>	(B)	<u>30</u>	P.S.I. to (C)	<u>55</u>	P.S.I.
Initial Closed In Period	Minutes	<u>45</u>	(D)	<u>1030</u>	P.S.I.		
Final Flow Period	Minutes	<u>90</u>	(E)	<u>58</u>	P.S.I. to (F)	<u>121</u>	P.S.I.
Final Closed In Period	Minutes	<u>60</u>	(G)	<u>994</u>	P.S.I.		
Final Hydrostatic Pressure			(H)	<u>2093</u>	P.S.I.		

GAS FLOW REPORT

Date 3/3/81 Ticket 6818 Company McCoy Petroleum Corporation
 Well Name and No. Mark #1 Dst No. 3 Interval Tested 4155'-4180'
 County Kingman State Kansas Sec. 10 Twp. 30S Rg. 7W

Time Gauge Pre-Flow	Time Gauge in Min.	P.S.I. on Meria Orifice Well Tester	P.S.I. on Pitot Tester	P.S.I. on Side Static Tester	P.S.I. on U-Tube Tester	Description of Flow
PRE FLOW						
	30 min.	NO GAS TO SURFACE FIRST FLOW.				

GAS TO SURFACE IN THIRTY ONE MINUTES. SECOND FLOW

40 min.	20 " of water				7,510 CFPD
45 min.	6" of water				15,400 CFPD
50 min.	4" of water				12,500 CFPD
55 min.	8" of water				17,200 CFPD
60 min.	4" of water				12,500 CFPD
65 min.	7" of water				16,700 CFPD
70 min.	7" of water				16,700 CFPD
75 min.	4" of water				12,500 CFPD
80 min.	4" of water				12,500 CFPD
85 min.	4" of water				12,500 CFPD
90 min.	4" of water				12,500 CFPD
95 min.	4" of water				12,500 CFPD
100min.	4" of water				12,500 CFPD
105min.	4" of water				12,500 CFPD
110min.	4" of water				12,500 CFPD

GAS BOTTLE

Serial No. -- Date Bottle Filled --- Date to be Invoiced 3/3/81

Requisition and Provisions for high pressure stainless steel gas bottles. Western Testing Co., Inc. shall not be liable for damage of any kind to property or personnel of the one whom gas bottle is filled or for any loss suffered or sustained directly or indirectly through the use of these bottles. By signing of this ticket showing receipt of a gas testing bottle, the undersigned agrees for himself and as agent for operator, to return this bottle to Western Testing Co., Inc. within thirty (30) days free of charge, or be invoiced in the amount of \$75.00 (total charge). Should valve or seal plug be missing or damaged beyond repair, operator shall be invoiced for repairs at our invoiced price.

All charges subject to 1½% per month, equal to 18% interest per annum after 30 days from date of invoice. Any expense incurred for collection will be added to the original amount.

COMPANY'S NAME McCoy Petroleum Corporation

Authorized by H. Deane Jirrels

WESTERN TESTING CO., INC.
Pressure Data

Date 3/3/81

Recorder No. 3354

Test Ticket No. 6818

Clock No. -- Elevation 1465 Kelly Bushing

Capacity 4200

Location 4154 Ft.

Well Temperature 130 °F

Point	Pressure		Time Given	Time Computed
A Initial Hydrostatic Mud	<u>2226</u> P.S.I.	Open Tool	<u>6:00P</u> M	
B First Initial Flow Pressure	<u>30</u> P.S.I.	First Flow Pressure	<u>30</u> Mins.	<u>30</u> Mins.
C First Final Flow Pressure	<u>55</u> P.S.I.	Initial Closed-in Pressure	<u>45</u> Mins.	<u>45</u> Mins.
D Initial Closed-in Pressure	<u>1030</u> P.S.I.	Second Flow Pressure	<u>90</u> Mins.	<u>90</u> Mins.
E Second Initial Flow Pressure	<u>58</u> P.S.I.	Final Closed-in Pressure	<u>60</u> Mins.	<u>60</u> Mins.
F Second Final Flow Pressure	<u>121</u> P.S.I.			
G Final Closed-in Pressure	<u>994</u> P.S.I.			
H Final Hydrostatic Mud	<u>2093</u> P.S.I.			

PRESSURE BREAKDOWN

First Flow Pressure
Breakdown: 6 Inc.
of 5 mins. and a
final inc. of 0 Min.

Initial Shut-In
Breakdown: 15 Inc.
of 3 mins. and a
final inc. of 0 Min.

Second Flow Pressure
Breakdown: 18 Inc.
of 5 mins. and a
final inc. of 0 Min.

Final Shut-In
Breakdown: 20 Inc.
of 3 mins. and a
final inc. of 0 Min.

Point Mins.	Press.	Point Minutes	Press.	Point Minutes	Press.	Point Minutes	Press.
P 1 <u>0</u>	<u>30</u>	<u>0</u>	<u>55</u>	<u>0</u>	<u>58</u>	<u>0</u>	<u>121</u>
P 2 <u>5</u>	<u>34</u>	<u>3</u>	<u>268</u>	<u>5</u>	<u>58</u>	<u>3</u>	<u>251</u>
P 3 <u>10</u>	<u>38</u>	<u>6</u>	<u>426</u>	<u>10</u>	<u>65</u>	<u>6</u>	<u>373</u>
P 4 <u>15</u>	<u>46</u>	<u>9</u>	<u>584</u>	<u>15</u>	<u>70</u>	<u>9</u>	<u>468</u>
P 5 <u>20</u>	<u>49</u>	<u>12</u>	<u>726</u>	<u>20</u>	<u>73</u>	<u>12</u>	<u>568</u>
P 6 <u>25</u>	<u>52</u>	<u>15</u>	<u>823</u>	<u>25</u>	<u>78</u>	<u>15</u>	<u>660</u>
P 7 <u>30</u>	<u>55</u>	<u>18</u>	<u>888</u>	<u>30</u>	<u>82</u>	<u>18</u>	<u>730</u>
P 8		<u>21</u>	<u>930</u>	<u>35</u>	<u>86</u>	<u>21</u>	<u>787</u>
P 9		<u>24</u>	<u>958</u>	<u>40</u>	<u>89</u>	<u>24</u>	<u>829</u>
P10		<u>27</u>	<u>979</u>	<u>45</u>	<u>93</u>	<u>27</u>	<u>869</u>
P11		<u>30</u>	<u>994</u>	<u>50</u>	<u>95</u>	<u>30</u>	<u>897</u>
P12		<u>33</u>	<u>1004</u>	<u>55</u>	<u>98</u>	<u>33</u>	<u>914</u>
P13		<u>36</u>	<u>1013</u>	<u>60</u>	<u>100</u>	<u>36</u>	<u>932</u>
P14		<u>39</u>	<u>1021</u>	<u>65</u>	<u>103</u>	<u>39</u>	<u>947</u>
P15		<u>42</u>	<u>1025</u>	<u>70</u>	<u>108</u>	<u>42</u>	<u>956</u>
P16		<u>45</u>	<u>1030</u>	<u>75</u>	<u>111</u>	<u>45</u>	<u>965</u>
P17				<u>80</u>	<u>116</u>	<u>48</u>	<u>975</u>
P18				<u>85</u>	<u>119</u>	<u>51</u>	<u>981</u>
P19				<u>90</u>	<u>121</u>	<u>54</u>	<u>987</u>
P20						<u>57</u>	<u>992</u>
						<u>60</u>	<u>994</u>