

**WESTERN TESTING CO., INC.**

P.O. BOX 1599 — WICHITA, KANSAS 67201

DATE 6/7/81

McCoy Petroleum Corporation
One Main Place, Suite 410
Wichita, Kansas 67202

WELL REPORT NO 14930

UNIT NO

DISTRICT

FOR CUSTOMER'S USE ONLY

REGISTER NO

VOUCHER NO

TERMS APPROVED

PRICE APPROVED

CALCULATIONS CHECKED

ADJUSTMENTS

ACCOUNTING DISTRIBUTION

AUDITED

FINAL APPROVAL

YOUR ORDER NO.	OWNER	CONTRACTOR			
WELL NO.	FARM	COUNTY	SECTION	TWP.	RANGE

#1 Swingle "E" Kingman County, Ks. 21 30S 9W

One drill stem test from 4296' to 4315' (Test 1) \$ 700.00

Mileage: Thirty-six miles @ .75¢ per mile 27.00

POSTED

\$ 727.00

DISCOUNT 7.27	1% DISCOUNT ALLOWED ON THIS INVOICE IF PAID BY THE 20 TH OF THE FOLLOWING MONTH.	PLEASE INCLUDE OUR INVOICE NUMBER WITH YOUR REMITTANCE	INVOICE NUMBER 14930
------------------	------------------------------------------------------------------------------------------------	-----------------------------------------------------------	-------------------------

SEND ALL REMITTANCES TO POST OFFICE BOX 1599, WICHITA, KANSAS 67201



WESTERN TESTING CO., INC.

FORMATION TESTING

TICKET No 14930

P. O. BOX 1599 PHONE (316) 262-5861
WICHITA, KANSAS 67201

Elevation 1658 K.B Formation Mississippi Eff. Pay Ft.

District Pratt Date 6-7-81 Customer Order No.

COMPANY NAME McCoy Petroleum Corporation

ADDRESS One Main Place, Suite 410, Wichita, Ks, 67202

LEASE AND WELL NO. Swingle E# 1 COUNTY Kingman STATE Ks Sec. 21 Twp. 30S Rge. 9W

Mail Invoice To #1 Swingle "E" SAME No. Copies Requested Reg

Co. Name Address

Mail Charts To SAME No. Copies Requested Reg

Address

Formation Test No. 7 Interval Tested from 4296 ft. to 4315 ft. Total Depth 4315 ft.

Packer Depth 4291 ft. Size 6 3/4 in. Packer Depth ft. Size in.

Packer Depth 4296 ft. Size 6 3/4 in. Packer Depth ft. Size in.

Depth of Selective Zone Set

Top Recorder Depth (Inside) 4302 ft. Recorder Number 2606 Cap. 4150

Bottom Recorder Depth (Outside) 4305 ft. Recorder Number 4332 Cap. 4200

Below Straddle Recorder Depth ft. Recorder Number Cap.

Drilling Contractor Sweetman Rig #1 Drill Collar Length 279 I. D. 2.2 in.

Mud Type Starch Viscosity 57 Weight Pipe Length I. D. in.

Weight 9.1 Water Loss 6.4 cc. Drill Pipe Length 3995 I. D. 3.8 in.

Chlorides P.P.M. Test Tool Length 22 ft. Tool Size 5 1/2 in.

Jars: Make Serial Number Anchor Length 19 ft. Size 5 1/2 in.

Did Well Flow? No Reversed Out No Surface Choke Size 3/4 in. Bottom Choke Size 3/4 in.

Main Hole Size 7 7/8 in. Tool Joint Size 4 1/4 F.H. in.

Blow: Good Blow I.F.P.

Recovered 40 ft. of slight oil & gas cut mud

Recovered 60 ft. of oil & gas cut mud 15% oil 35% mud 20% cut 30% gas

Recovered 50 ft. of oil & gas cut watery mud 10% oil 35% mud 30% cut 25% gas

Recovered 10 ft. of slight oil and muddy water

Recovered 300 ft. of gas in pipes

Remarks:

Time On Location 3:00 A.M. Time Pick Up Tool 4:30 P.M. Time Off Location 12:00 P.M.

Time Set Packer(s) 5:55 A.M. Time Started Off Bottom 9:10 P.M. Maximum Temperature 130

Initial Hydrostatic Pressure (A) 2344 P.S.I.

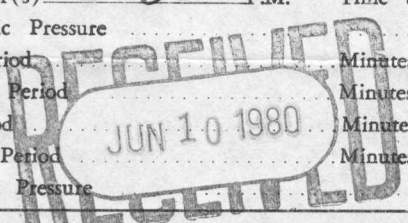
Initial Flow Period Minutes 30 (B) 72 P.S.I. to (C) 72 P.S.I.

Initial Closed In Period Minutes 45 (D) 429 P.S.I.

Final Flow Period Minutes 60 (E) 83 P.S.I. to (F) 83 P.S.I.

Final Closed In Period Minutes 60 (G) 551 P.S.I.

Final Hydrostatic Pressure (H) 2240 P.S.I.



COMPANY TERMS

Western Testing Co., Inc. shall not be liable for damages of any kind to the property or personnel of the one for whom a test is made or for any loss suffered or sustained directly or indirectly through the use of its equipment, of its statements or opinion concerning the results of any test. Tools lost or damaged in the hole shall be paid at cost by the party for whom the test is made.

All charges subject to 12% interest after 60 days from date of invoice. Any expense incurred for collection will be added to the original amount.

Test Approved By Robert E. McCann
Signature of Customer or his authorized representative

Western Representative Louis Spencer Trends

FIELD INVOICE

Open Hole Test	\$ <u>700.00</u>
Misrun	\$ <u> </u>
Straddle Test	\$ <u> </u>
Jars	\$ <u> </u>
Selective Zone	\$ <u> </u>
Safety Joint	\$ <u> </u>
Standby	\$ <u> </u>
Evaluation	\$ <u> </u>
Extra Packer	\$ <u> </u>
Circ. Sub.	\$ <u> </u>
Mileage <u>36</u>	\$ <u>27.00</u>
Fluid Sampler	\$ <u> </u>
Extra Charts	\$ <u> </u>
Insurance	\$ <u> </u>
TOTAL	\$ <u>727.00</u>

WESTERN TESTING CO., INC.

Pressure Data

Date 6-7

Test Ticker No. 14930

Recorder No. 2606

Capacity 4150

Location 4302 Ft.

Clock No. _____ Elevation 1658 KB

Well Temperature 130 °F

Point	Pressure		Time Given	Time Computed
A Initial Hydrostatic Mud	<u>2344</u> P.S.I.	Open Tool	<u>5:55 P</u>	
B First Initial Flow Pressure	<u>64</u> P.S.I.	First Flow Pressure	<u>30</u> Mins.	<u>30</u> Mins.
C First Final Flow Pressure	<u>64</u> P.S.I.	Initial Closed-in Pressure	<u>45</u> Mins.	<u>42</u> Mins.
D Initial Closed-in Pressure	<u>487</u> P.S.I.	Second Flow Pressure	<u>60</u> Mins.	<u>60</u> Mins.
E Second Initial Flow Pressure	<u>94</u> P.S.I.	Final Closed-in Pressure	<u>60</u> Mins.	<u>57</u> Mins.
F Second Final Flow Pressure	<u>94</u> P.S.I.			
G Final Closed-in Pressure	<u>548</u> P.S.I.			
H Final Hydrostatic Mud	<u>2199</u> P.S.I.			

PRESSURE BREAKDOWN

First Flow Pressure
Breakdown: 6 Inc.
of 5 mins. and a
final inc. of 0 Min.

Initial Shut-In
Breakdown: 14 Inc.
of 3 mins. and a
final inc. of 0 Min.

Second Flow Pressure
Breakdown: 12 Inc.
of 5 mins. and a
final inc. of 0 Min.

Final Shut-In
Breakdown: 19 Inc.
of 3 mins. and a
final inc. of 0 Min.

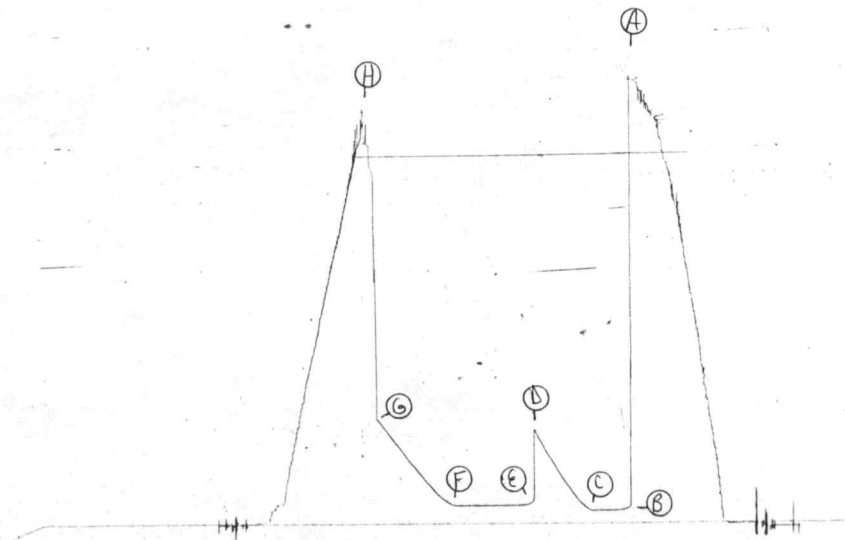
Point Mins.	Press.	Point Minutes	Press.	Point Minutes	Press.	Point Minutes	Press.		
P 1 0	<u>64</u>	0	<u>64</u>	0	<u>94</u>	0	<u>94</u>		
P 2 5)	3	<u>77</u>	5)	3	<u>102</u>		
P 3 10		6	<u>94</u>	10		6	<u>116</u>		
P 4 15		9	<u>114</u>	15		9	<u>129</u>		
P 5 20		12	<u>141</u>	20		12	<u>146</u>		
P 6 25		15	<u>173</u>	25		15	<u>168</u>		
P 7 30		<u>64</u>	18	<u>202</u>		30	<u>198</u>	18	<u>198</u>
P 8 35			21	<u>233</u>		35		21	<u>220</u>
P 9 40			24	<u>266</u>		40		24	<u>248</u>
P10 45			27	<u>304</u>		45		27	<u>272</u>
P11 50			30	<u>339</u>		50		30	<u>302</u>
P12 55		33	<u>373</u>	55		33	<u>327</u>		
P13 60		36	<u>414</u>	60	<u>94</u>	36	<u>354</u>		
P14		39	<u>454</u>	65		39	<u>383</u>		
P15		42	<u>487</u>	70		42	<u>408</u>		
P16		45		75		45	<u>435</u>		
P17		48		80		48	<u>462</u>		
P18		51		85		51	<u>492</u>		
P19		54		90		54	<u>521</u>		
P20		57				57	<u>548</u>		
		60				<u>60</u>			

DST # 1

2000

TRT # 14930

I



Company Mcoy Petroleum Corporation Lease & Well No. Swingle "E" #1
 Elevation 1658 Kelly Bushing Mississippi Formation Mississippi Effective Pay - Ft. Ticket No. 14930
 Date 6/7/81 Sec. 21 Twp. 30S Range 9W County Kingman State Kansas
 Test Approved by Robert E. McCann Western Representative Louis Spencer

Formation Test No. 1 Interval Tested from 4296 ft. to 4315 ft. Total Depth 4315 ft.
 Packer Depth 4291 ft. Size 6 3/4 in. Packer Depth - ft. Size - in.
 Packer Depth 4296 ft. Size 6 3/4 in. Packer Depth - ft. Size - in.

Depth of Selective Zone Set -
 Top Recorder Depth (Inside) 4302 ft. Recorder Number 2606 Cap. 4150
 Bottom Recorder Depth (Outside) 4305 ft. Recorder Number 4332 Cap. 4200
 Below Straddle Recorder Depth - ft. Recorder Number - Cap. -

Drilling Contractor Sweetman Drlg. Rig #1 Drill Collar Length 279 I. D. 2.2 in.
 Mud Type starch Viscosity 57 Weight Pipe Length - I. D. - in.
 Weight 9.1 Water Loss 6.4 cc. Drill Pipe Length 3995 I. D. 3.8 in.
 Chlorides - P.P.M. Test Tool Length 22 ft. Tool Size 5 1/2 in.
 Jars: Make - Serial Number - Anchor Length 19 ft. Size 5 1/2 in.
 Did Well Flow? No Reversed Out No Surface Choke Size 3/4 in. Bottom Choke Size 3/4 in.
 Main Hole Size 7 7/8 in. Tool Joint Size 4 1/4 in.

Blow: Good blow on initial flow period.

Recovered 40 ft. of slightly oil and gas cut mud
 Recovered 60 ft. of oil and gas cut mud 15% oil;35% mud;20% oil;30% gas
 Recovered 50 ft. of oil and gas cut watery mud 10% oil;35% mud;30% water;25% gas
 Recovered 10 ft. of slight oil cut muddy water
 Recovered 300 ft. of gas in pipe

Remarks: _____

Time Set Packer(s) 5:55 A.M. P.M. Time Started Off Bottom 9:10 A.M. P.M. Maximum Temperature 130
 Initial Hydrostatic Pressure (A) 2344 P.S.I.
 Initial Flow Period Minutes 30 (B) 64 P.S.I. to (C) 64 P.S.I.
 Initial Closed In Period Minutes 42 (D) 487 P.S.I.
 Final Flow Period Minutes 60 (E) 94 P.S.I. to (F) 94 P.S.I.
 Final Closed In Period Minutes 57 (G) 548 P.S.I.
 Final Hydrostatic Pressure (H) 2199 P.S.I.

WESTERN TESTING CO., INC.
Pressure Data

Date 6/7/81 Recorder No. 2606 Capacity 4150 Test Ticket No. 14930
 Clock No. -- Elevation 1658 Kelly Bushing Location 4302 Ft. 130
 Well Temperature °F

Point	Pressure		Time Given	Time Computed
A Initial Hydrostatic Mud	<u>2344</u> P.S.I.	Open Tool	<u>5:55P</u>	<u>M</u>
B First Initial Flow Pressure	<u>64</u> P.S.I.	First Flow Pressure	<u>30</u> Mins.	<u>30</u> Mins.
C First Final Flow Pressure	<u>64</u> P.S.I.	Initial Closed-in Pressure	<u>45</u> Mins.	<u>42</u> Mins.
D Initial Closed-in Pressure	<u>487</u> P.S.I.	Second Flow Pressure	<u>60</u> Mins.	<u>60</u> Mins.
E Second Initial Flow Pressure	<u>94</u> P.S.I.	Final Closed-in Pressure	<u>60</u> Mins.	<u>57</u> Mins.
F Second Final Flow Pressure	<u>94</u> P.S.I.			
G Final Closed-in Pressure	<u>548</u> P.S.I.			
H Final Hydrostatic Mud	<u>2199</u> P.S.I.			

PRESSURE BREAKDOWN

First Flow Pressure
 Breakdown: 6 Inc.
 of 5 mins. and a
 final inc. of 0 Min.

Initial Shut-In
 Breakdown: 14 Inc.
 of 3 mins. and a
 final inc. of 0 Min.

Second Flow Pressure
 Breakdown: 12 Inc.
 of 5 mins. and a
 final inc. of 0 Min.

Final Shut-In
 Breakdown: 19 Inc.
 of 3 mins. and a
 final inc. of 0 Min.

Point Mins.	Press.	Point Minutes	Press.	Point Minutes	Press.	Point Minutes	Press.
P 1 <u>0</u>	<u>64</u>	<u>0</u>	<u>64</u>	<u>0</u>	<u>94</u>	<u>0</u>	<u>94</u>
P 2 <u>5</u>	<u>64</u>	<u>3</u>	<u>77</u>	<u>5</u>	<u>94</u>	<u>3</u>	<u>102</u>
P 3 <u>10</u>	<u>64</u>	<u>6</u>	<u>94</u>	<u>10</u>	<u>94</u>	<u>6</u>	<u>116</u>
P 4 <u>15</u>	<u>64</u>	<u>9</u>	<u>114</u>	<u>15</u>	<u>94</u>	<u>9</u>	<u>129</u>
P 5 <u>20</u>	<u>64</u>	<u>12</u>	<u>141</u>	<u>20</u>	<u>94</u>	<u>12</u>	<u>146</u>
P 6 <u>25</u>	<u>64</u>	<u>15</u>	<u>173</u>	<u>25</u>	<u>94</u>	<u>15</u>	<u>168</u>
P 7 <u>30</u>	<u>64</u>	<u>18</u>	<u>202</u>	<u>30</u>	<u>94</u>	<u>18</u>	<u>198</u>
P 8 <u> </u>	<u> </u>	<u>21</u>	<u>233</u>	<u>35</u>	<u>94</u>	<u>21</u>	<u>220</u>
P 9 <u> </u>	<u> </u>	<u>24</u>	<u>266</u>	<u>40</u>	<u>94</u>	<u>24</u>	<u>248</u>
P10 <u> </u>	<u> </u>	<u>27</u>	<u>304</u>	<u>45</u>	<u>94</u>	<u>27</u>	<u>272</u>
P11 <u> </u>	<u> </u>	<u>30</u>	<u>339</u>	<u>50</u>	<u>94</u>	<u>30</u>	<u>302</u>
P12 <u> </u>	<u> </u>	<u>33</u>	<u>373</u>	<u>55</u>	<u>94</u>	<u>33</u>	<u>327</u>
P13 <u> </u>	<u> </u>	<u>36</u>	<u>414</u>	<u>60</u>	<u>94</u>	<u>36</u>	<u>354</u>
P14 <u> </u>	<u> </u>	<u>39</u>	<u>454</u>	<u> </u>	<u> </u>	<u>39</u>	<u>383</u>
P15 <u> </u>	<u> </u>	<u>42</u>	<u>487</u>	<u> </u>	<u> </u>	<u>42</u>	<u>408</u>
P16 <u> </u>	<u> </u>	<u> </u>	<u> </u>	<u> </u>	<u> </u>	<u>45</u>	<u>435</u>
P17 <u> </u>	<u> </u>	<u> </u>	<u> </u>	<u> </u>	<u> </u>	<u>48</u>	<u>462</u>
P18 <u> </u>	<u> </u>	<u> </u>	<u> </u>	<u> </u>	<u> </u>	<u>51</u>	<u>492</u>
P19 <u> </u>	<u> </u>	<u> </u>	<u> </u>	<u> </u>	<u> </u>	<u>54</u>	<u>521</u>
P20 <u> </u>	<u> </u>	<u> </u>	<u> </u>	<u> </u>	<u> </u>	<u>57</u>	<u>548</u>



WESTERN TESTING CO., INC.

P.O. BOX 1599 - WICHITA, KANSAS 67201

DATE 6/8/81

McCoy Petroleum Corporation
One Main Place, Suite 410
Wichita, Kansas 67202

WELL REPORT NO

14931

UNIT NO

DISTRICT

FOR CUSTOMER'S USE ONLY

REGISTER NO

VOUCHER NO

TERMS APPROVED

PRICE APPROVED

CALCULATIONS CHECKED

ADJUSTMENTS

ACCOUNTING DISTRIBUTION

AUDITED

FINAL APPROVAL

YOUR ORDER NO	OWNER	CONTRACTOR			
WELL NO	FARM	COUNTY	SECTION	TWP	RANGE

#1

Swingle "E"

Kingman County, Ks.

21 30S 9W

One drill stem test from 4315' to 4330' (Test 2)

\$ 700.00

Mileage: Thirty six miles @ .75¢ per mile

27.00

\$ 727.00

POSTED

DISCOUNT 7.27	1% DISCOUNT ALLOWED ON THIS INVOICE IF PAID BY THE 20 TH OF THE FOLLOWING MONTH.	PLEASE INCLUDE OUR INVOICE NUMBER WITH YOUR REMITTANCE	INVOICE NUMBER 14931
------------------	------------------------------------------------------------------------------------------------	-----------------------------------------------------------	-------------------------

SEND ALL REMITTANCES TO POST OFFICE BOX 1599, WICHITA, KANSAS 67201



WESTERN TESTING CO., INC.
FORMATION TESTING

TICKET No 14931

P. O. BOX 1599 PHONE (316) 262-5861
WICHITA, KANSAS 67201

Elevation 1658 LB Formation Miss Eff. Pay Ft.

District PRATT Date 6-8-81 Customer Order No.

COMPANY NAME M^c Coy Petroleum Corporation

ADDRESS One main Place Suite 410 Wichita Kansas 67202

LEASE AND WELL NO. Swingle-E-#1 COUNTY Kingman STATE KANSAS Sec. 21 Twp 30s Rge 9w

Mail Invoice To #1 Swingle "E" Same Co. Name Address No. Copies Requested 5

Mail Charts To Same Address No. Copies Requested 5

Formation Test No. 2 Interval Tested from 4315 ft. to 4330 ft. Total Depth 4330 ft.

Packer Depth 4310 ft. Size 6 3/4 in. Packer Depth ft. Size in.

Packer Depth 4315 ft. Size 6 3/4 in. Packer Depth ft. Size in.

Depth of Selective Zone Set

Top Recorder Depth (Inside) 4319 ft. Recorder Number 2606 Cap. 4150

Bottom Recorder Depth (Outside) 4322 ft. Recorder Number 4332 Cap. 4200

Below Straddle Recorder Depth ft. Recorder Number Cap.

Drilling Contractor Sweetman Drill Collar Length 279 I. D. 2 1/4 in.

Mud Type STARCH Viscosity 63 Weight Pipe Length I. D. in.

Weight 7.0 Water Loss 6.4 cc. Drill Pipe Length 4014 I. D. 3.8 in.

Chlorides NC P.P.M. Test Tool Length 20 ft. Tool Size 5 1/2 OD in.

Jars: Make Serial Number Anchor Length 15 ft. Size 5 1/2 OD in.

Did Well Flow? NO Reversed Out NO Surface Choke Size 3/4 in. Bottom Choke Size 3/4 in.

Main Hole Size 7 7/8 in. Tool Joint Size 4 1/2 FH in.

Blow: blow build into strong blow on initial but wouldn't

maintain two inch flow - strong flow depleting to gas blow

original flow

Recovered 300 ft. of gas in pipe

Recovered 20 ft. of Slightly ~~oil~~ gas cut mud

Recovered 60 ft. of Slightly oil & gas cut mud

Recovered 120 ft. of Slightly oil cut muddy water

Recovered ft. of

Remarks:

RECEIVED
JUN 10 1980

Time On Location 4:45 ^{A.M.}/_{P.M.} Time Pick Up Tool 5:30 ^{A.M.}/_{P.M.} Time Off Location ^{A.M.}/_{P.M.}

Time Set Packer(s) 7:15 ^{A.M.}/_{P.M.} Time Started Off Bottom 10:30 ^{A.M.}/_{P.M.} Maximum Temperature 130^oF

Initial Hydrostatic Pressure (A) 2344 P.S.I.

Initial Flow Period 30 Minutes (B) 83 P.S.I. to (C) 52 P.S.I.

Initial Closed In Period 45 Minutes (D) 1319 P.S.I.

Final Flow Period 60 Minutes (E) 124 P.S.I. to (F) 104 P.S.I.

Final Closed In Period 60 Minutes (G) 1319 P.S.I.

Final Hydrostatic Pressure (H) 2240 P.S.I.

COMPANY TERMS

Western Testing Co., Inc. shall not be liable for damages of any kind to the property or personnel of the one for whom a test is made or for any loss suffered or sustained directly or indirectly through the use of its equipment, of its statements or opinion concerning the results of any test. Tools lost or damaged in the hole shall be paid at cost by the party for whom the test is made.

All charges subject to 12% interest after 60 days from date of invoice. Any expense incurred for collection will be added to the original amount.

Test Approved By Robert E. McCam
Signature of Customer or his authorized representative

Western Representative Rod Witt Thank You

FIELD INVOICE

Open Hole Test \$ 700.00
Misrun \$
Straddle Test \$
Jars \$
Selective Zone \$
Safety Joint \$
Standby \$
Evaluation \$
Extra Packer \$
Circ. Sub. \$
Mileage \$ 36 mi 27.00
Fluid Sampler \$
Extra Charts \$
Insurance \$
TOTAL \$ 727.00

WESTERN TESTING CO., INC.

Pressure Data

Date: 6-8 Test Ticket No. 14931
 Recorder No. 2606 Capacity 4150 Location 4319 Ft.
 Clock No. Elevation 1658 KB Well Temperature 130 °F

Point	Pressure	Time Given	Time Computed
A Initial Hydrostatic Mud	<u>2344</u> P.S.I.	<u>7:15 A</u> M	
B First Initial Flow Pressure	<u>67</u> P.S.I.	<u>30</u> Mins.	<u>25</u> Mins.
C First Final Flow Pressure	<u>67</u> P.S.I.	<u>45</u> Mins.	<u>42</u> Mins.
D Initial Closed-in Pressure	<u>1307</u> P.S.I.	<u>60</u> Mins.	<u>60</u> Mins.
E Second Initial Flow Pressure	<u>104</u> P.S.I.	<u>60</u> Mins.	<u>66</u> Mins.
F Second Final Flow Pressure	<u>107</u> P.S.I.		
G Final Closed-in Pressure	<u>1325</u> P.S.I.		
H Final Hydrostatic Mud	<u>2240</u> P.S.I.		

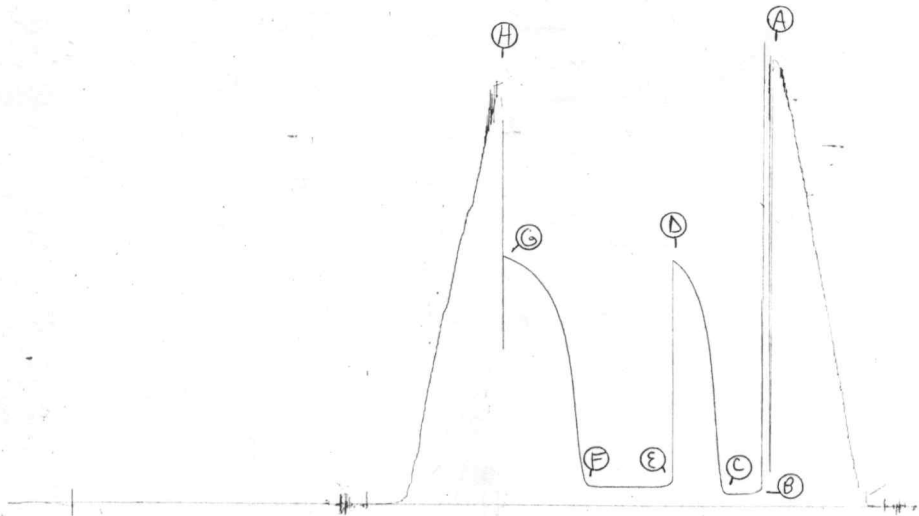
PRESSURE BREAKDOWN

First Flow Pressure Breakdown: <u>5</u> Inc. of <u>5</u> mins. and a final inc. of <u>0</u> Min.		Initial Shut-In Breakdown: <u>14</u> Inc. of <u>3</u> mins. and a final inc. of <u>0</u> Min.		Second Flow Pressure Breakdown: <u>12</u> Inc. of <u>5</u> mins. and a final inc. of <u>0</u> Min.		Final Shut-In Breakdown: <u>22</u> Inc. of <u>3</u> mins. and a final inc. of <u>0</u> Min.	
Point Mins.	Press.	Point Minutes	Press.	Point Minutes	Press.	Point Minutes	Press.
P 1	<u>67</u>	0	<u>67</u>	0	<u>104</u>	0	<u>107</u>
P 2	}	3	<u>100</u>	5	}	3	<u>125</u>
P 3		6	<u>277</u>	10		6	<u>227</u>
P 4		9	<u>500</u>	15		9	<u>410</u>
P 5		12	<u>744</u>	20		12	<u>604</u>
P 6		<u>67</u>	15	<u>904</u>		25	15
P 7		18	<u>1014</u>	30		18	<u>875</u>
P 8		21	<u>1091</u>	35		21	<u>958</u>
P 9		24	<u>1145</u>	40		24	<u>1025</u>
P10		27	<u>1195</u>	45		27	<u>1070</u>
P11		30	<u>1232</u>	50	<u>104</u>	30	<u>1116</u>
P12		33	<u>1259</u>	55	<u>105</u>	33	<u>1149</u>
P13		36	<u>1282</u>	60	<u>107</u>	36	<u>1182</u>
P14		39	<u>1298</u>	65		39	<u>1205</u>
P15		42	<u>1307</u>	70		42	<u>1228</u>
P16		45		75		45	<u>1250</u>
P17		48		80		48	<u>1265</u>
P18		51		85		51	<u>1280</u>
P19		54		90		54	<u>1290</u>
P20		57				57	<u>1300</u>
		60				60	<u>1313</u>
						63	<u>1321</u>
						66	<u>1325</u>

2606 DST # 2

IKT # 14931

I



Company McCoy Petroleum Corporation Lease & Well No. Swingle "E" #1
 Elevation 1658 Kelly Bushing Mississippi Formation Effective Pay - Ft. Ticket No. 14931
 Date 6/8/81 Sec. 21 Twp. 30S Range 9W County Kingman State Kansas
 Test Approved by Robert E. McCann Western Representative Rod Tritt

Formation Test No. 2 Interval Tested from 4315 ft. to 4330 ft. Total Depth 4330 ft.
 Packer Depth 4310 ft. Size 6 3/4 in. Packer Depth - ft. Size - in.
 Packer Depth 4315 ft. Size 6 3/4 in. Packer Depth - ft. Size - in.

Depth of Selective Zone Set -
 Top Recorder Depth (Inside) 4319 ft. Recorder Number 2606 Cap. 4150
 Bottom Recorder Depth (Outside) 4322 ft. Recorder Number 4332 Cap. 4200
 Below Straddle Recorder Depth - ft. Recorder Number - Cap. -

Drilling Contractor Sweetman Drilling Drill Collar Length 279 I. D. 2 1/4 in.
 Mud Type starch Viscosity 63 Weight Pipe Length - I. D. - in.
 Weight 9.0 Water Loss 6.4 cc. Drill Pipe Length 4016 I. D. 3.8 in.
 Chlorides NC P.P.M. Test Tool Length 20 ft. Tool Size 5 1/2 OD in.
 Jars: Make - Serial Number - Anchor Length 15 ft. Size 5 1/2 OD in.
 Did Well Flow? No Reversed Out No Surface Choke Size 3/4 in. Bottom Choke Size 3/4 in.
 Main Hole Size 7 7/8 in. Tool Joint Size 4 1/2 FH in.

Blow: Blow building to strong on initial flow but wouldn't maintain two inch flow. Strong blow depleting to good blow on final flow.

Recovered 300 ft. of gas in pipe
 Recovered 20 ft. of slightly gas cut mud
 Recovered 60 ft. of slightly oil and gas cut mud
 Recovered 120 ft. of slightly oil cut muddy water
 Recovered - ft. of -

Remarks: _____

Time Set Packer(s) 7:15 A.M. Time Started Off Bottom 10:30 A.M. Maximum Temperature 130
P.M. P.M.
 Initial Hydrostatic Pressure (A) 2344 P.S.I.
 Initial Flow Period Minutes 25 (B) 67 P.S.I. to (C) 67 P.S.I.
 Initial Closed In Period Minutes 42 (D) 1307 P.S.I.
 Final Flow Period Minutes 60 (E) 104 P.S.I. to (F) 107 P.S.I.
 Final Closed In Period Minutes 66 (G) 1325 P.S.I.
 Final Hydrostatic Pressure (H) 2240 P.S.I.

WESTERN TESTING CO., INC.

Pressure Data

Date 6/8/81 Test Ticket No. 14931
 Recorder No. 2606 Capacity 4150 Location 4319 Ft.
 Clock No. - Elevation 1658 Kelly Bushing Well Temperature 130 °F

Point	Pressure			Time	
				Given	Computed
A Initial Hydrostatic Mud	2344	P.S.I.	Open Tool	7:15A	M
B First Initial Flow Pressure	67	P.S.I.	First Flow Pressure	30	Mins. 25 Mins.
C First Final Flow Pressure	67	P.S.I.	Initial Closed-in Pressure	45	Mins. 42 Mins.
D Initial Closed-in Pressure	1307	P.S.I.	Second Flow Pressure	60	Mins. 60 Mins.
E Second Initial Flow Pressure	104	P.S.I.	Final Closed-in Pressure	60	Mins. 66 Mins.
F Second Final Flow Pressure	107	P.S.I.			
G Final Closed-in Pressure	1325	P.S.I.			
H Final Hydrostatic Mud	2240	P.S.I.			

PRESSURE BREAKDOWN

First Flow Pressure Breakdown: <u>5</u> Inc. of <u>5</u> mins. and a final inc. of <u>0</u> Min.	Initial Shut-In Breakdown: <u>14</u> Inc. of <u>3</u> mins. and a final inc. of <u>0</u> Min.	Second Flow Pressure Breakdown: <u>12</u> Inc. of <u>5</u> mins. and a final inc. of <u>0</u> Min.	Final Shut-In Breakdown: <u>22</u> Inc. of <u>3</u> mins. and a final inc. of <u>0</u> Min.
------------------------------------------------------------------------------------------------------------------	---------------------------------------------------------------------------------------------------------------	--------------------------------------------------------------------------------------------------------------------	-------------------------------------------------------------------------------------------------------------

Point Mins.	Press.	Point Minutes	Press.	Point Minutes	Press.	Point Minutes	Press.
P 1 0	67	0	67	0	104	0	107
P 2 5	67	3	100	5	104	3	125
P 3 10	67	6	277	10	104	6	227
P 4 15	67	9	500	15	104	9	410
P 5 20	67	12	744	20	104	12	604
P 6 25	67	15	904	25	104	15	761
P 7		18	1014	30	104	18	875
P 8		21	1091	35	104	21	958
P 9		24	1145	40	104	24	1025
P10		27	1195	45	104	27	1080
P11		30	1232	50	104	30	1116
P12		33	1259	55	105	33	1149
P13		36	1282	60	107	36	1182
P14		39	1298			39	1205
P15		42	1307			42	1228
P16						45	1250
P17						48	1265
P18						51	1280
P19						54	1290
P20						57	1300
						60	1313
						63	1321
						66	1325



WESTERN TESTING CO., INC.
P.O. BOX 1599 - WICHITA, KANSAS 67201

DATE 6/8/81

McCoy Petroleum Corporation
One Main Place, Suite 410
Wichita, Kansas 67202

WELL REPORT NO. 14932
UNIT NO.
DISTRICT

FOR CUSTOMER'S USE ONLY	
REGISTER NO.	VOUCHER NO.
TERMS APPROVED	PRICE APPROVED
CALCULATIONS CHECKED	
ADJUSTMENTS	
ACCOUNTING DISTRIBUTION	
AUDITED	FINAL APPROVAL

YOUR ORDER NO.	OWNER	CONTRACTOR			
WELL NO.	FARM	COUNTY	SECTION	TWP	RANGE
#1	Swingle "E"	Kingman County, Ks.	21	30S	9W

One drill stemtest from 4330' to 4350' (Test 3) \$ 700.00
Mileage: Twenty-five miles @ .75¢ per mile 18.75

\$ 718.75

POSTED

DISCOUNT 7.19	1% DISCOUNT ALLOWED ON THIS INVOICE IF PAID BY THE 20TH OF THE FOLLOWING MONTH.	PLEASE INCLUDE OUR INVOICE NUMBER WITH YOUR REMITTANCE	INVOICE NUMBER 14932
------------------	---------------------------------------------------------------------------------	--------------------------------------------------------	-------------------------

SEND ALL REMITTANCES TO POST OFFICE BOX 1599, WICHITA, KANSAS 67201



WESTERN TESTING CO., INC.

FORMATION TESTING

TICKET No 14932

P. O. BOX 1599 PHONE (316) 262-5861 WICHITA, KANSAS 67201

Elevation 1568KB Formation Mississippi Eff. Pay Ft.

District Pratt Date 6-8-81 Customer Order No. COMPANY NAME McCoy Petroleum Corporation ADDRESS ONE MAIN PLAZA, SUITE 410, WICHITA, KS 67202 LEASE AND WELL NO Swingle #1 COUNTY KINGMAN STATE KS Sec 2 Twp 30S Rge 9W Mail Invoice To Co. Name SAME Address No. Copies Requested 100 Mail Charts To Co. Name SAME Address No. Copies Requested 100

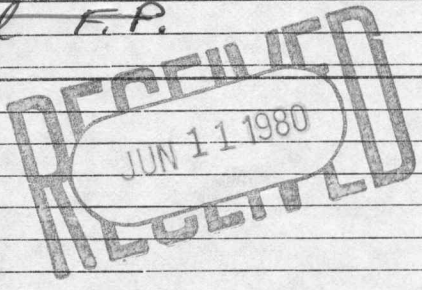
Formation Test No 3 Interval Tested from 4330 ft. to 4350 ft. Total Depth 4350 ft. Packer Depth 4325 ft. Size 6 3/4 in. Packer Depth 4330 ft. Size 6 3/4 in. Packer Depth - ft. Size - in. Packer Depth - ft. Size - in. Depth of Selective Zone Set -

Top Recorder Depth (Inside) 4333 ft. Recorder Number 2606 Cap. 4/50 Bottom Recorder Depth (Outside) 4336 ft. Recorder Number 4332 Cap. 4200 Below Straddle Recorder Depth - ft. Recorder Number - Cap. -

Drilling Contractor Sweetman Drill Collar Length 279 I. D. 2.25 in. Mud Type STARCH Viscosity 60 Weight Pipe Length 4021 I. D. 3.18 in. Weight 9.0 Water Loss 6.9 cc. Drill Pipe Length 20 ft. Tool Size 5 1/2 in. Chlorides - P.P.M. Test Tool Length 20 ft. Tool Size 5 1/2 in. Jars: Make - Serial Number - Anchor Length 30 ft. Size 5 1/2 in. Did Well Flow? No Reversed Out No Surface Choke Size 3/4 in. Bottom Choke Size 3/4 in. Main Hole Size 7 7/8 in. Tool Joint Size 4 1/2 F.H. in.

Blow: good throughout just F.F. & Frail F.P.

Recovered 150 ft. of muddy water Recovered 1740 ft. of sub water Recovered - ft. of Recovered - ft. of Recovered - ft. of Remarks:



Time On Location 8:30 A.M. Time Pick Up Tool 9:15 A.M. Time Off Location 5:00 A.M. Time Set Packer(s) 10:25 A.M. Time Started Off Bottom 1:40 A.M. Maximum Temperature Initial Hydrostatic Pressure (A) 2313 P.S.I. Initial Flow Period 30 Minutes (B) 176 P.S.I. to (C) 405 P.S.I. Initial Closed In Period 45 Minutes (D) 1495 P.S.I. Final Flow Period 60 Minutes (E) 520 P.S.I. to (F) 893 P.S.I. Final Closed In Period 60 Minutes (G) 1454 P.S.I. Final Hydrostatic Pressure (H) 2188 P.S.I.

COMPANY TERMS

Western Testing Co., Inc. shall not be liable for damages of any kind to the property or personnel of the one for whom a test is made or for any loss suffered or sustained directly or indirectly through the use of its equipment, of its statements or opinion concerning the results of any test. Tools lost or damaged in the hole shall be paid at cost by the party for whom the test is made.

All charges subject to 12% interest after 60 days from date of invoice. Any expense incurred for collection will be added to the original amount.

Test Approved By Robert E. McLean Signature of Customer or his authorized representative

Western Representative Louis Spruce Thanks

FIELD INVOICE

Open Hole Test X \$ 700.00 Misrun \$ Straddle Test \$ Jars \$ Selective Zone \$ Safety Joint \$ Standby \$ Evaluation \$ Extra Packer \$ Circ. Sub. \$ Mileage 25 \$ 18.75 Fluid Sampler \$ Extra Charts \$ Insurance \$ TOTAL \$ 718.75

WESTERN TESTING CO., INC.

Pressure Data

Date 6-8 Recorder No. 2606 Capacity 4150 Test Ticket No. 14932
 Clock No. Elevation 1568 KB Location 4333 Ft. Well Temperature °F

Point	Pressure	Time Given	Time Computed
A Initial Hydrostatic Mud	<u>2313</u> P.S.I.	<u>10:25 P</u> M	
B First Initial Flow Pressure	<u>156</u> P.S.I.	<u>30</u> Mins.	<u>20</u> Mins.
C First Final Flow Pressure	<u>402</u> P.S.I.	<u>45</u> Mins.	<u>45</u> Mins.
D Initial Closed-in Pressure	<u>1465</u> P.S.I.	<u>60</u> Mins.	<u>55</u> Mins.
E Second Initial Flow Pressure	<u>514</u> P.S.I.	<u>60</u> Mins.	<u>60</u> Mins.
F Second Final Flow Pressure	<u>890</u> P.S.I.		
G Final Closed-in Pressure	<u>1462</u> P.S.I.		
H Final Hydrostatic Mud	<u>2157</u> P.S.I.		

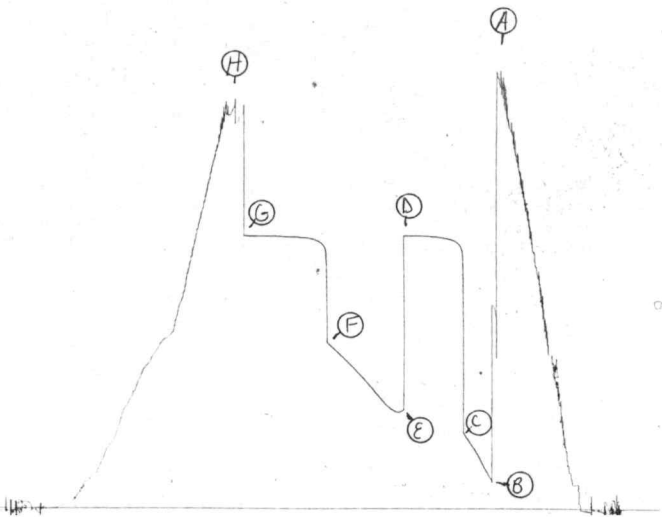
PRESSURE BREAKDOWN

<p>First Flow Pressure Breakdown: <u>4</u> Inc. of <u>5</u> mins. and a final inc. of <u>0</u> Min.</p>	<p>Initial Shut-In Breakdown: <u>15</u> Inc. of <u>3</u> mins. and a final inc. of <u>0</u> Min.</p>	<p>Second Flow Pressure Breakdown: <u>11</u> Inc. of <u>5</u> mins. and a final inc. of <u>0</u> Min.</p>	<p>Final Shut-In Breakdown: <u>20</u> Inc. of <u>3</u> mins. and a final inc. of <u>0</u> Min.</p>
-------------------------------------------------------------------------------------------------------------------------------------------------------------------------------	----------------------------------------------------------------------------------------------------------------------------------------------------------------------------	---------------------------------------------------------------------------------------------------------------------------------------------------------------------------------	--------------------------------------------------------------------------------------------------------------------------------------------------------------------------

Point Mins.	Press.	Point Minutes	Press.	Point Minutes	Press.	Point Minutes	Press.
P 1 0	<u>156</u>	0	<u>402</u>	0	<u>514</u>	0	<u>890</u>
P 2 5	<u>212</u>	3	<u>1386</u>	5	<u>514</u>	3	<u>1406</u>
P 3 10	<u>279</u>	6	<u>1425</u>	10	<u>535</u>	6	<u>1427</u>
P 4 15	<u>335</u>	9	<u>1440</u>	15	<u>570</u>	9	<u>1440</u>
P 5 20	<u>402</u>	12	<u>1446</u>	20	<u>612</u>	12	<u>1446</u>
P 6 25		15	<u>1451</u>	25	<u>653</u>	15	<u>1451</u>
P 7 30		18	<u>1454</u>	30	<u>697</u>	18	<u>1454</u>
P 8 35		21	<u>1457</u>	35	<u>738</u>	21	<u>1455</u>
P 9 40		24	<u>1460</u>	40	<u>775</u>	24	<u>1456</u>
P10 45		27	<u>1462</u>	45	<u>813</u>	27	<u>1456</u>
P11 50		30	<u>1464</u>	50	<u>848</u>	30	<u>1457</u>
P12 55		33	<u>1465</u>	55	<u>890</u>	33	<u>1458</u>
P13 60		36		60		36	<u>1459</u>
P14		39		65		39	<u>1460</u>
P15		42		70		42	<u>1461</u>
P16		45	<u>1465</u>	75		45	<u>1462</u>
P17		48		80		48	
P18		51		85		51	
P19		54		90		54	
P20		57				57	
		60				60	<u>1462</u>

1KT # 14932

I



Company McCoy Petroleum Corporation Lease & Well No. Swingle 'E' #1
 Elevation 1568 Kelly Bushing Formation Mississippi Effective Pay - Ft. Ticket No. 14932
 Date 6/8/81 Sec. 21 Twp. 30S Range 9W County Kingman State Kansas
 Test Approved by Robert E. McCann Western Representative Louis Spencer

Formation Test No. 3 Interval Tested from 4330 ft. to 4350 ft. Total Depth 4350 ft.
 Packer Depth 4325 ft. Size 6 3/4 in. Packer Depth - ft. Size - in.
 Packer Depth 4330 ft. Size 6 3/4 in. Packer Depth - ft. Size - in.

Depth of Selective Zone Set -
 Top Recorder Depth (Inside) 4333 ft. Recorder Number 2606 Cap. 4150
 Bottom Recorder Depth (Outside) 4336 ft. Recorder Number 4332 Cap. 4200
 Below Straddle Recorder Depth - ft. Recorder Number - Cap. -

Drilling Contractor Sweetman Drlg. Drill Collar Length 279 I. D. 2.25 in.
 Mud Type starch Viscosity 60 Weight Pipe Length - I. D. - in.
 Weight 9.0 Water Loss 6.9 cc. Drill Pipe Length 4021 I. D. 3.8 in.
 Chlorides - P.P.M. Test Tool Length 20 ft. Tool Size 5 1/2 in.
 Jars: Make - Serial Number - Anchor Length 20 ft. Size 5 1/2 in.
 Did Well Flow? No Reversed Out No Surface Choke Size 3/4 in. Bottom Choke Size 3/4 in.
 Main Hole Size 7 7/8 in. Tool Joint Size 4 1/2 FH in.

Blow: Good throughout test.

Recovered 150 ft. of muddy water
 Recovered 1740 ft. of salt water
 Recovered ft. of
 Recovered ft. of
 Recovered ft. of

Remarks:

Time Set Packer(s) 10:25 A.M. P.M. Time Started Off Bottom 1:40 A.M. P.M. Maximum Temperature ?
 Initial Hydrostatic Pressure (A) 2313 P.S.I.
 Initial Flow Period Minutes 20 (B) 156 P.S.I. to (C) 402 P.S.I.
 Initial Closed In Period Minutes 45 (D) 1465 P.S.I.
 Final Flow Period Minutes 55 (E) 514 P.S.I. to (F) 890 P.S.I.
 Final Closed In Period Minutes 60 (G) 1462 P.S.I.
 Final Hydrostatic Pressure (H) 2157 P.S.I.

WESTERN TESTING CO., INC.
Pressure Data

Date 6/8/81

Recorder No. 2606

Capacity 4150

Test Ticket No. 14932

Clock No. - Elevation 1568 Kelly Bushing

Location 4333 Ft.

Well Temperature - °F

Point	Pressure		Time Given	Time Computed
A Initial Hydrostatic Mud	2313	P.S.I.	10:25P	M
B First Initial Flow Pressure	156	P.S.I.	30 Mins.	20 Mins.
C First Final Flow Pressure	402	P.S.I.	45 Mins.	45 Mins.
D Initial Closed-in Pressure	1465	P.S.I.	60 Mins.	55 Mins.
E Second Initial Flow Pressure	514	P.S.I.	60 Mins.	60 Mins.
F Second Final Flow Pressure	890	P.S.I.		
G Final Closed-in Pressure	1462	P.S.I.		
H Final Hydrostatic Mud	2157	P.S.I.		

PRESSURE BREAKDOWN

First Flow Pressure
Breakdown: 4 Inc.
of 5 mins. and a
final inc. of 0 Min.

Initial Shut-In
Breakdown: 15 Inc.
of 3 mins. and a
final inc. of 0 Min.

Second Flow Pressure
Breakdown: 11 Inc.
of 5 mins. and a
final inc. of 0 Min.

Final Shut-In
Breakdown: 20 Inc.
of 3 mins. and a
final inc. of 0 Min.

Point Mins.	Press.	Point Minutes	Press.	Point Minutes	Press.	Point Minutes	Press.
P 1 <u>0</u>	<u>156</u>	<u>0</u>	<u>402</u>	<u>0</u>	<u>514</u>	<u>0</u>	<u>890</u>
P 2 <u>5</u>	<u>212</u>	<u>3</u>	<u>1386</u>	<u>5</u>	<u>514</u>	<u>3</u>	<u>1406</u>
P 3 <u>10</u>	<u>279</u>	<u>6</u>	<u>1425</u>	<u>10</u>	<u>535</u>	<u>6</u>	<u>1427</u>
P 4 <u>15</u>	<u>335</u>	<u>9</u>	<u>1440</u>	<u>15</u>	<u>570</u>	<u>9</u>	<u>1440</u>
P 5 <u>20</u>	<u>402</u>	<u>12</u>	<u>1446</u>	<u>20</u>	<u>612</u>	<u>12</u>	<u>1446</u>
P 6		<u>15</u>	<u>1451</u>	<u>25</u>	<u>653</u>	<u>15</u>	<u>1451</u>
P 7		<u>18</u>	<u>1454</u>	<u>30</u>	<u>697</u>	<u>18</u>	<u>1454</u>
P 8		<u>21</u>	<u>1457</u>	<u>35</u>	<u>738</u>	<u>21</u>	<u>1455</u>
P 9		<u>24</u>	<u>1460</u>	<u>40</u>	<u>775</u>	<u>24</u>	<u>1456</u>
P10		<u>27</u>	<u>1462</u>	<u>45</u>	<u>813</u>	<u>27</u>	<u>1456</u>
P11		<u>30</u>	<u>1464</u>	<u>50</u>	<u>848</u>	<u>30</u>	<u>1457</u>
P12		<u>33</u>	<u>1465</u>	<u>55</u>	<u>890</u>	<u>33</u>	<u>1458</u>
P13		<u>36</u>	<u>1465</u>			<u>36</u>	<u>1459</u>
P14		<u>39</u>	<u>1465</u>			<u>39</u>	<u>1460</u>
P15		<u>42</u>	<u>1465</u>			<u>42</u>	<u>1461</u>
P16		<u>45</u>	<u>1465</u>			<u>45</u>	<u>1462</u>
P17						<u>48</u>	<u>1462</u>
P18						<u>51</u>	<u>1462</u>
P19						<u>54</u>	<u>1462</u>
P20						<u>57</u>	<u>1462</u>
						<u>60</u>	<u>1462</u>