



WESTERN TESTING CO., INC.
FORMATION TESTING

TICKET No. 15306

P. O. BOX 1599 PHONE (316) 262-5861
WICHITA, KANSAS 67201

Elevation 1627 KB 1617 GH Formation Swape Eff. Pay Ft.

District PRATT Date 8-24-82 Customer Order No.

COMPANY NAME American Energies Corp
ADDRESS 5755 70 4th Financial Center

LEASE AND WELL NO. #1 Chain COUNTY Barber STATE Kansas Sec. 18 Twp. 31.5 Rge. 11W

Mail Invoice To Same Co. Name Address No. Copies Requested 9

Mail Charts To Same Address No. Copies Requested 9

Formation Test No. 1 Interval Tested From 4119 ft. to 4144 ft. Total Depth 4144 ft.
Packer Depth 4114 ft. Size 6 3/4 in. Packer Depth — ft. Size — in.
Packer Depth 4119 ft. Size 6 3/4 in. Packer Depth — ft. Size — in.

Depth of Selective Zone Set
Top Recorder Depth (Inside) 4122 ft. Recorder Number 2606 Cap. 4150
Bottom Recorder Depth (Outside) 4125 ft. Recorder Number 4332 Cap. 4200
Below Straddle Recorder Depth — ft. Recorder Number — Cap. —

Drilling Contractor Husky Drilling Co. Rig 2 Drill Collar Length 374 I. D. 2 1/4 in.
Mud Type Monpac Viscosity 47 Weight Pipe Length 306 I. D. 2 1/2 in.
Weight 9.3 Water Loss 10 cc. Drill Pipe Length 3414 I. D. 3.8 in.
Chlorides 20,000 P.P.M. Test Tool Length 25 ft. Tool Size 5 1/2 OD in.
Jars: Make WTC Serial Number — Anchor Length 25 ft. Size 5 1/2 OD in.
Did Well Flow? NO Reversed Out yes Surface Choke Size 3/4 in. Bottom Choke Size 3/4 in.
Main Hole Size 7 1/8 in. Tool Joint Size 4 1/2 in.

Blow: Strong blow on both the initial & final flow periods
NO gas to surface

Recovered 360 ft. of gas in pipe
Recovered 1390 ft. of gas, oil cut muddy water Chlorides Top 43,000 P.P.M.
Recovered — ft. of middle 113,000
Recovered — ft. of Bottom 113,000
Remarks left chock # 4332 with slab.

Time On Location 8:30 A.M. 8-23-82 Time Pick Up Tool 11:15 A.M.
Time Set Packer(s) 12:55 P.M. Time Started Off Bottom 4:40 P.M. Maximum Temperature 120°F

Initial Hydrostatic Pressure (A) 2083 P.S.I.
Initial Flow Period (B) 30 Minutes (C) 187 P.S.I. to (D) 364 P.S.I.
Initial Closed In Period (E) 45 Minutes (F) 1558 P.S.I.
Final Flow Period (G) 60 Minutes (H) 468 P.S.I. to (I) 675 P.S.I.
Final Closed In Period (J) 90 Minutes (K) 1590 P.S.I.
Final Hydrostatic Pressure (L) 2031 P.S.I.

COMPANY TERMS

Western Testing Co., Inc. shall not be liable for damages of any kind to the property or personnel of the one for whom a test is made or for any loss suffered or sustained directly or indirectly through the use of its equipment, of its statements or opinion concerning the results of any test. Tools lost or damaged in the hole shall be paid at cost by the party for whom the test is made.

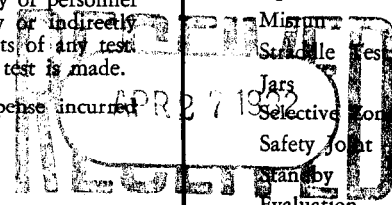
All charges subject to 12% interest after 60 days from date of invoice. Any expense incurred for collection will be added to the original amount.

Test Approved By [Signature] Signature of Customer or his authorized representative.

Western Representative [Signature] Thank you.

FIELD INVOICE

Open Hole Test \$ 675.00
Miscellaneous \$
Straddle Test \$
Jars \$ 30.00
Selective Zone \$
Safety Joint \$
Analysis \$
Evaluation \$
Extra Packer \$
Circ. Sub. \$ 35.00
Mileage \$
Fluid Sampler \$
Extra Charts \$
Insurance \$
Telecopier \$
TOTAL \$ 710.00



9 copies 11-10-82

WESTERN TESTING CO., INC.

Pressure Data

Date: 3-24-82 Test Ticket No. 15306
 Recorder No. 2606 Capacity 4150 Location 4122 Ft
 Clock No. --- Elevation 1627 K.B Well Temperature 120 °F

Point	Pressure		Time Given	Time Computed
A Initial Hydrostatic Mud	<u>2088</u>	P.S.I.	<u>12:55 PM</u>	
B First Initial Flow Pressure	<u>181</u>	P.S.I.	<u>30</u> Mins.	<u>30</u> Mins.
C First Final Flow Pressure	<u>378</u>	P.S.I.	<u>45</u> Mins.	<u>48</u> Mins.
D Initial Closed-in Pressure	<u>1580</u>	P.S.I.	<u>60</u> Mins.	<u>60</u> Mins.
E Second Initial Flow Pressure	<u>483</u>	P.S.I.	<u>90</u> Mins.	<u>90</u> Mins.
F Second Final Flow Pressure	<u>686</u>	P.S.I.		
G Final Closed-in Pressure	<u>1591</u>	P.S.I.		
H Final Hydrostatic Mud	<u>2040</u>	P.S.I.		

PRESSURE BREAKDOWN

First Flow Pressure		Initial Shut-In		Second Flow Pressure		Final Shut-In	
Breakdown: <u>6</u> Inc.		Breakdown: <u>16</u> Inc.		Breakdown: <u>12</u> Inc.		Breakdown: <u>30</u> Inc.	
of <u>5</u> mins. and a		of <u>3</u> mins. and a		of <u>5</u> mins. and a		of <u>3</u> mins. and a	
final inc. of <u>0</u> Min.		final inc. of <u>0</u> Min.		final inc. of <u>0</u> Min.		final inc. of <u>0</u> Min.	
Point Mins.	Press.	Point Minutes	Press.	Point Minutes	Press.	Point Minutes	Press.
P 1	<u>0</u>	<u>0</u>	<u>378</u>	<u>0</u>	<u>483</u>	<u>0</u>	<u>686</u>
P 2	<u>5</u>	<u>3</u>	<u>1232</u>	<u>5</u>	<u>483</u>	<u>3</u>	<u>1267</u>
P 3	<u>10</u>	<u>6</u>	<u>1354</u>	<u>10</u>	<u>485</u>	<u>6</u>	<u>1365</u>
P 4	<u>15</u>	<u>9</u>	<u>1404</u>	<u>15</u>	<u>497</u>	<u>9</u>	<u>1411</u>
P 5	<u>20</u>	<u>12</u>	<u>1448</u>	<u>20</u>	<u>513</u>	<u>12</u>	<u>1438</u>
P 6	<u>25</u>	<u>15</u>	<u>1472</u>	<u>25</u>	<u>536</u>	<u>15</u>	<u>1461</u>
P 7	<u>30</u>	<u>18</u>	<u>1494</u>	<u>30</u>	<u>561</u>	<u>18</u>	<u>1479</u>
P 8	<u>35</u>	<u>21</u>	<u>1511</u>	<u>35</u>	<u>586</u>	<u>21</u>	<u>1492</u>
P 9	<u>40</u>	<u>24</u>	<u>1526</u>	<u>40</u>	<u>609</u>	<u>24</u>	<u>1507</u>
P 10	<u>45</u>	<u>27</u>	<u>1536</u>	<u>45</u>	<u>629</u>	<u>27</u>	<u>1519</u>
P 11	<u>50</u>	<u>30</u>	<u>1546</u>	<u>50</u>	<u>648</u>	<u>30</u>	<u>1526</u>
P 12	<u>55</u>	<u>33</u>	<u>1555</u>	<u>55</u>	<u>672</u>	<u>33</u>	<u>1534</u>
P 13	<u>60</u>	<u>36</u>	<u>1560</u>	<u>60</u>	<u>686</u>	<u>36</u>	<u>1539</u>
P 14		<u>39</u>	<u>1565</u>	<u>65</u>		<u>39</u>	<u>1546</u>
P 15		<u>42</u>	<u>1571</u>	<u>70</u>		<u>42</u>	<u>1550</u>
P 16		<u>45</u>	<u>1577</u>	<u>75</u>		<u>45</u>	<u>1556</u>
P 17		<u>48</u>	<u>1580</u>	<u>80</u>		<u>48</u>	<u>1560</u>
P 18		<u>51</u>		<u>85</u>		<u>51</u>	<u>1564</u>
P 19		<u>54</u>		<u>90</u>		<u>54</u>	<u>1568</u>
P 20		<u>57</u>				<u>57</u>	<u>1571</u>
		<u>60</u>				<u>60</u>	<u>1573</u>

0.000

WESTERN TESTING CO., INC.
Pressure Data

Date _____ Test Ticket No. 15306
 Recorder No. _____ Capacity _____ Location _____ Ft.
 Clock No. _____ Elevation _____ Well Temperature _____ °F

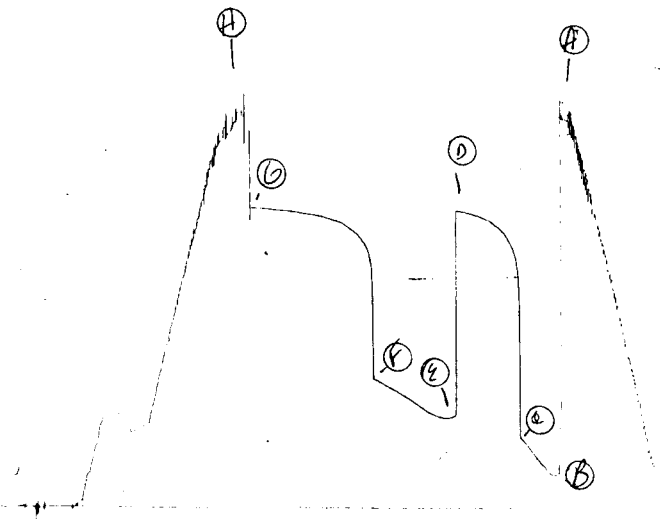
Point	Pressure		Time Given	Time Computed
A Initial Hydrostatic Mud _____	P.S.I.	Open Tool _____	M _____	
B First Initial Flow Pressure _____	P.S.I.	First Flow Pressure _____	Mins. _____	Mins. _____
C First Final Flow Pressure _____	P.S.I.	Initial Closed-in Pressure _____	Mins. _____	Mins. _____
D Initial Closed-in Pressure _____	P.S.I.	Second Flow Pressure _____	Mins. _____	Mins. _____
E Second Initial Flow Pressure _____	P.S.I.	Final Closed-in Pressure _____	Mins. _____	Mins. _____
F Second Final Flow Pressure _____	P.S.I.			
G Final Closed-in Pressure _____	P.S.I.			
H Final Hydrostatic Mud _____	P.S.I.			

PRESSURE BREAKDOWN

First Flow Pressure		Initial Shut-In		Second Flow Pressure		Final Shut-In	
Breakdown: _____ Inc.		Breakdown: _____ Inc.		Breakdown: _____ Inc.		Breakdown: _____ Inc.	
of <u>5</u> mins. and a		of <u>3</u> mins. and a		of <u>5</u> mins. and a		of <u>3</u> mins. and a	
final inc. of <u>0</u> Min.		final inc. of <u>0</u> Min.		final inc. of <u>0</u> Min.		final inc. of <u>0</u> Min.	
Point Mins.	Press.	Point Minutes	Press.	Point Minutes	Press.	Point Minutes	Press.
P 1 _____	_____	63 _____	_____	_____	_____	63 _____	15 76
P 2 _____	_____	66 _____	_____	_____	_____	66 _____	15 78
P 3 _____	_____	69 _____	_____	_____	_____	69 _____	15 80
P 4 _____	_____	72 _____	_____	_____	_____	72 _____	15 82
P 5 _____	_____	75 _____	_____	_____	_____	75 _____	15 84
P 6 _____	_____	78 _____	_____	_____	_____	78 _____	15 86
P 7 _____	_____	81 _____	_____	_____	_____	81 _____	15 88
P 8 _____	_____	84 _____	_____	_____	_____	84 _____	15 89
P 9 _____	_____	87 _____	_____	_____	_____	87 _____	15 90
P10 _____	_____	90 _____	_____	_____	_____	90 _____	15 91
P11 _____	_____	93 _____	_____	_____	_____	93 _____	_____
P12 _____	_____	96 _____	_____	_____	_____	96 _____	_____
P13 _____	_____	99 _____	_____	_____	_____	99 _____	_____
P14 _____	_____	102 _____	_____	_____	_____	102 _____	_____
P15 _____	_____	105 _____	_____	_____	_____	105 _____	_____
P16 _____	_____	108 _____	_____	_____	_____	108 _____	_____
P17 _____	_____	111 _____	_____	_____	_____	111 _____	_____
P18 _____	_____	114 _____	_____	_____	_____	114 _____	_____
P19 _____	_____	117 _____	_____	_____	_____	117 _____	_____
P20 _____	_____	120 _____	_____	_____	_____	120 _____	_____

JK # 15306

I



Company American Energies Corporation Lease & Well No. Chain #1
 Location 1627 Kelly Bushing-1617 Ground Level - Swopa Effective Pay - Ft. Ticket No. 15306
 Date 4/24/82 Sec. 18 Twp. 31S Range 11W County Barber State Kansas
 Test Approved by Dwight J. Williams Western Representative Rod Tritt

Formation Test No. 1 Interval Tested from 4119 ft. to 4144 ft. Total Depth 4144 ft.
 Casing Depth 4114 ft. Size 6 3/4 in. Packer Depth - ft. Size - in.
 Casing Depth 4119 ft. Size 6 3/4 in. Packer Depth - ft. Size - in.

Depth of Selective Zone Set -
 Top Recorder Depth (Inside) 4122 ft. Recorder Number 2606 Cap. 4150
 Bottom Recorder Depth (Outside) 4125 ft. Recorder Number 4332 Cap. 4200
 Flow Straddle Recorder Depth - ft. Recorder Number - Cap. -
 Drilling Contractor Husky Drilling Co. Rig #2 Drill Collar Length 374 I. D. 2 1/2 in.
 Mud Type monpac Viscosity 47 Weight Pipe Length 306 I. D. 2 1/2 in.
 Weight 9.3 Water Loss 10 cc. Drill Pipe Length 3414 I. D. 3.8 in.
 Chlorides 20,000 P.P.M. Test Tool Length 25 ft. Tool Size 5 1/2 OD in.
 Make WIC Serial Number 402 Anchor Length 25 ft. Size 5 1/2 OD in.
 Mud Well Flow? No Reversed Out Yes Surface Choke Size 3/4 in. Bottom Choke Size 3/4 in.
 Main Hole Size 7 7/8 in. Tool Joint Size 4 1/2 FH in.

Remarks: Strong blow on both initial and final flow periods. No gas to surface.

360 ft. of gas in pipe
1390 ft. of gassy oil cut muddy water Chlorides Top: 43,000 ppm
 Middle: 113,000 ppm
 Bottom: 113,000 ppm

Remarks: Chart #4332 left with geologist.

Time Set Packer(s) 12:55 ~~P.M.~~ A.M. Time Started Off Bottom 4:40 ~~P.M.~~ A.M. Maximum Temperature 120°
 Initial Hydrostatic Pressure (A) 2088 P.S.I.
 Initial Flow Period Minutes 30 (B) 181 P.S.I. to (C) 378 P.S.I.
 Initial Closed In Period Minutes 48 (D) 1580 P.S.I.
 Final Flow Period Minutes 60 (E) 483 P.S.I. to (F) 686 P.S.I.
 Final Closed In Period Minutes 90 (G) 1591 P.S.I.
 Final Hydrostatic Pressure (H) 2040 P.S.I.

WESTERN TESTING CO., INC.
Pressure Data

Date 3/24/82 Recorder No. 2606 Capacity 4150 Test Ticket No. 15306
 Location 4122 Ft. Elevation 1627 Kelly Bushing Well Temperature 120 °F

Point	Pressure		Time Given	Time Computed
A Initial Hydrostatic Mud	2088	P.S.I.	12:55A	M
B First Initial Flow Pressure	181	P.S.I.	30	Mins. 30 Mins.
C First Final Flow Pressure	378	P.S.I.	45	Mins. 48 Mins.
D Initial Closed-in Pressure	1580	P.S.I.	60	Mins. 60 Mins.
E Second Initial Flow Pressure	483	P.S.I.	90	Mins. 90 Mins.
F Second Final Flow Pressure	686	P.S.I.		
G Final Closed-in Pressure	1591	P.S.I.		
H Final Hydrostatic Mud	2040	P.S.I.		

PRESSURE BREAKDOWN

Point Mins.	First Flow Pressure		Initial Shut-In		Second Flow Pressure		Final Shut-In	
	Breakdown:	Inc.	Breakdown:	Inc.	Breakdown:	Inc.	Breakdown:	Inc.
	of 5 mins. and a final inc. of 0 Min.		of 3 mins. and a final inc. of 0 Min.		of 5 mins. and a final inc. of 0 Min.		of 3 mins. and a final inc. of 0 Min.	
Point Mins.	Press.	Point Minutes	Press.	Point Minutes	Press.	Point Minutes	Press.	
P 1 0	181	0	378	0	483	0	686	
P 2 5	185	3	1232	5	483	3	1267	
P 3 10	224	6	1354	10	485	6	1365	
P 4 15	262	9	1404	15	497	9	1411	
P 5 20	307	12	1448	20	513	12	1438	
P 6 25	358	15	1472	25	536	15	1461	
P 7 30	378	18	1494	30	561	18	1479	
P 8		21	1511	35	586	21	1493	
P 9		24	1526	40	609	24	1507	
P10		27	1536	45	629	27	1519	
P11		30	1546	50	648	30	1526	
P12		33	1555	55	672	33	1534	
P13		36	1560	60	686	36	1539	
P14		39	1565			39	1546	
P15		42	1571			42	1550	
P16		45	1577			45	1556	
P17		48	1580			48	1560	
P18						51	1564	
P19						54	1568	
P20						57	1571	
						60	1573	

WESTERN TESTING CO., INC.
Pressure Data

Date 3/24/82 Test Ticket No. 15306
 Recorder No. 2606 Capacity 4150 Location 4122 Ft.
 Clock No. - Elevation 1627 Kelly Bushing Well Temperature 120 °F

Point	Pressure		Time Given	Time Computed
			M	Mins.
A Initial Hydrostatic Mud	2088 P.S.I.	Open Tool	12:55A	
B First Initial Flow Pressure	181 P.S.I.	First Flow Pressure	30 Mins.	30 Mins.
C First Final Flow Pressure	378 P.S.I.	Initial Closed-in Pressure	45 Mins.	48 Mins.
D Initial Closed-in Pressure	1580 P.S.I.	Second Flow Pressure	60 Mins.	60 Mins.
E Second Initial Flow Pressure	483 P.S.I.	Final Closed-in Pressure	90 Mins.	90 Mins.
F Second Final Flow Pressure	686 P.S.I.			
G Final Closed-in Pressure	1591 P.S.I.			
H Final Hydrostatic Mud	2040 P.S.I.			

PRESSURE BREAKDOWN

First Flow Pressure Breakdown: <u>6</u> Inc. of <u>5</u> mins. and a final inc. of <u>0</u> Min.	Initial Shut-In Breakdown: <u>16</u> Inc. of <u>3</u> mins. and a final inc. of <u>0</u> Min.	Second Flow Pressure Breakdown: <u>12</u> Inc. of <u>5</u> mins. and a final inc. of <u>0</u> Min.	Final Shut-In Breakdown: <u>30</u> Inc. of <u>3</u> mins. and a final inc. of <u>0</u> Min.
--	---	--	---

Point Mins.	Press.	Point Minutes	Press.	Point Minutes	Press.	Point Minutes	Press.
P 1						63	1576
P 2						66	1578
P 3						69	1580
P 4						72	1582
P 5						75	1584
P 6						78	1586
P 7						81	1588
P 8						84	1589
P 9						87	1590
P10						90	1591
P11							
P12							
P13							
P14							
P15							
P16							
P17							
P18							
P19							
P20							



WESTERN TESTING CO., INC.

FORMATION TESTING

TICKET

No 15307

OK

P. O. BOX 1599 PHONE (316) 262-5861 WICHITA, KANSAS 67201

Elevation 1627 KB Formation Miss Eff. Pay Ft.

District PRAT Date 4-25-82 Customer Order No.

COMPANY NAME American Energy Corp ADDRESS 570 fourth financial center Wichita 67202

LEASE AND WELL NO. #1 Chain COUNTY Barber STATE Kansas Sec. 18 Twp 31s Rge 11w

Mail Invoice To Same Co. Name Address No. Copies Requested 19

Mail Charts To Same Address No. Copies Requested 19

Formation Test No. 2 Interval Tested From 4312 ft. to 4342 ft. Total Depth 4342 ft.

Packer Depth 4302 (4307) ft. Size 6 3/4 in. Packer Depth - ft. Size - in.

Packer Depth 4342 (4312) ft. Size 6 3/4 in. Packer Depth - ft. Size - in.

Depth of Selective Zone Set -

Top Recorder Depth (Inside) 43 16 ft. Recorder Number 2606 Cap. 4150

Bottom Recorder Depth (Outside) 43 19 ft. Recorder Number 4332 Cap. 4200

Below Straddle Recorder Depth - ft. Recorder Number - Cap. -

Drilling Contractor Husky Drilling Rig 2 Drill Collar Length 374 I. D. 2 1/4 in.

Mud Type Monpac Viscosity 19.3 Weight Pipe Length 306 I. D. 2 1/2 in.

Weight 53 Water Loss 12.0 cc. Drill Pipe Length - I. D. 3.8 in.

Chlorides 2000 P.P.M. Test Tool Length 2.5 ft. Tool Size 5/200 in.

Jars: Make WTC Serial Number 411 Anchor Length 30 ft. Size 5/200 in.

Did Well Flow? NO Reversed Out NO Surface Choke Size 3/4 in. Bottom Choke Size 3/4 in.

Main Hole Size 7/8 in. Tool Joint Size 4 1/2 in.

Blow: Strong blow through sub test gas to surface 1 minute

See flow chart See attached sheet for gas measurements

Recovered 150 ft. of gassy mud - (trace of oil) - see chart

Recovered 30 ft. of gassy watery mud 40 deg gas Top 20,000 P.P.M.

Recovered 35 deg mud 1500 water Bottom 32,000 P.P.M.

Remarks: No. Depth check # 4332 ah rig.

Time On Location 2:00 A.M. Time Pick Up Tool 3:30 P.M. Time Off Location 1:30 P.M.

Time Set Packer(s) 6:30 A.M. Time Started Off Bottom 10:15 P.M. Maximum Temperature 123° F

Initial Hydrostatic Pressure (A) 2180 P.S.I.

Initial Flow Period Minutes 30 (B) 447 P.S.I. to (C) 447 P.S.I.

Initial Closed In Period Minutes 45 (D) 1611 P.S.I.

Final Flow Period Minutes 60 (E) 520 P.S.I. to (F) 437 P.S.I.

Final Closed In Period Minutes 90 (G) 1590 P.S.I.

Final Hydrostatic Pressure (H) 2083 P.S.I.

COMPANY TERMS

Western Testing Co., Inc. shall not be liable for damages of any kind to the property or personnel of the one for whom a test is made or for any loss suffered or sustained directly or indirectly through the use of its equipment, of its statements or opinion concerning the results of any test. Tools lost or damaged in the hole shall be paid at cost by the party for whom the test is made.

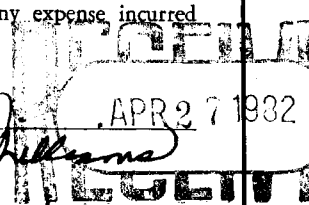
All charges subject to 12% interest after 60 days from date of invoice. Any expense incurred for collection will be added to the original amount.

Test Approved By [Signature] Signature of Customer or his authorized representative

Western Representative [Signature] Thank you

FIELD INVOICE

Table with 2 columns: Item and Price. Items include Open Hole Test, Misrun, Straddle Test, Jars, Selective Zone, Safety Joint, Sandby, Evaluation, Extra Packer, Cln. Sub., Mileage, Fluid Sampler, Extra Charts, Insurance, Copier. Prices are handwritten or stamped.



9 Copies 4 Trucks



Nº 3318

GAS FLOW REPORT

Date 4-25-82 Ticket 15307 Company American Energy Corp
 Well Name and No. 1 Chain Dst No. 2 Interval Tested 4312-4342
 County BARBER State KANSAS Sec. 18 Twp. 31 S Rg. 11 W

Time Gauge in Min.	P.S.I. on Merla Orifice Well Tester	Size of Orifice	P.S.I. on Pitot Tester	P.S.I. on Side Static Tester	Description of Flow
--------------------	-------------------------------------	-----------------	------------------------	------------------------------	---------------------

PRE FLOW

1	-	1 orifice			gas to surface
10	56-psi				ok 1,509,000 mcf PD
20	62-psi				1,639,000 "
30	62-psi				ok 1,639,000 "

SECOND FLOW

10	66psi	1"			1,726,000 mcf PD
20	66"				ok 1,726,000
30	64"				1,683,000
40	64"				1,683,000
50	64"				ok 1,683,000
60	64"				1,683,000

GAS BOTTLE

Serial No. #78 Date Bottle Filled 4-25-82 Date to be Invoiced _____

Requisition and Provisions for high pressure stainless steel gas bottles. Western Testing Co., Inc. shall not be liable for damage of any kind to property or personnel of the one whom gas bottle is filled or for any loss suffered or sustained directly or indirectly through the use of these bottles. By signing of this ticket showing receipt of a gas testing bottle, the undersigned agrees for himself and as agent for operator, to return this bottle to Western Testing Co., Inc. within thirty (30) days free of charge, or be invoiced in the amount of \$75.00 (total charge). Should valve or seal plug be missing or damaged beyond repair, operator shall be invoiced for repairs at our invoiced price.

All charges subject to 1½% per month, equal to 18% interest per annum after 30 days from date of invoice. Any expense incurred for collection will be added to the original amount.

COMPANY'S NAME American Energy Corp
 Authorized by [Signature]

WESTERN TESTING CO., INC.

Pressure Data

Date 4-25-82 Test Ticket No. 15307
 Recorder No. 2606 Capacity 4150 Location 4216 Ft
 Clock No. --- Elevation 1627 K.B. Well Temperature 123 °F

Point	Pressure	Open Tool	Time Given	Time Computed
A Initial Hydrostatic Mud	<u>2196</u> P.S.I.		<u>6:30 A</u> M	
B First Initial Flow Pressure	<u>444</u> P.S.I.	First Flow Pressure	<u>30</u> Mins.	<u>30</u> Mins.
C First Final Flow Pressure	<u>448</u> P.S.I.	Initial Closed-in Pressure	<u>45</u> Mins.	<u>45</u> Mins.
D Initial Closed-in Pressure	<u>1615</u> P.S.I.	Second Flow Pressure	<u>60</u> Mins.	<u>65</u> Mins.
E Second Initial Flow Pressure	<u>537</u> P.S.I.	Final Closed-in Pressure	<u>90</u> Mins.	<u>87</u> Mins.
F Second Final Flow Pressure	<u>437</u> P.S.I.			
G Final Closed-in Pressure	<u>1589</u> P.S.I.			
H Final Hydrostatic Mud	<u>2167</u> P.S.I.			

PRESSURE BREAKDOWN

First Flow Pressure		Initial Shut-In		Second Flow Pressure		Final Shut-In	
Breakdown: <u>6</u> Inc.		Breakdown: <u>15</u> Inc.		Breakdown: <u>12</u> Inc.		Breakdown: <u>29</u> Inc.	
of <u>5</u> mins. and a		of <u>3</u> mins. and a		of <u>5</u> mins. and a		of <u>3</u> mins. and a	
final inc. of <u>0</u> Min.		final inc. of <u>0</u> Min.		final inc. of <u>0</u> Min.		final inc. of <u>0</u> Min.	
Point Mins.	Press.	Point Minutes	Press.	Point Minutes	Press.	Point Minutes	Press.
P 1 0	<u>444</u>	0	<u>448</u>	0	<u>537</u>	0	<u>437</u>
P 2 5	<u>444</u>	3	<u>1161</u>	5	<u>506</u>	3	<u>1215</u>
P 3 10	<u>444</u>	6	<u>1386</u>	10	<u>493</u>	6	<u>1340</u>
P 4 15	<u>445</u>	9	<u>1460</u>	15	<u>480</u>	9	<u>1392</u>
P 5 20	<u>446</u>	12	<u>1505</u>	20	<u>471</u>	12	<u>1426</u>
P 6 25	<u>446</u>	15	<u>1534</u>	25	<u>461</u>	15	<u>1450</u>
P 7 30	<u>448</u>	18	<u>1549</u>	30	<u>456</u>	18	<u>1475</u>
P 8 35		21	<u>1564</u>	35	<u>452</u>	21	<u>1490</u>
P 9 40		24	<u>1577</u>	40	<u>447</u>	24	<u>1501</u>
P10 45		27	<u>1587</u>	45	<u>441</u>	27	<u>1511</u>
P11 50		30	<u>1594</u>	50	<u>437</u>	30	<u>1521</u>
P12 55		33	<u>1600</u>	55	<u>437</u>	33	<u>1529</u>
P13 60		36	<u>1604</u>	60	<u>437</u>	36	<u>1537</u>
P14		39	<u>1606</u>	65	<u>437</u>	39	<u>1543</u>
P15		42	<u>1610</u>	70		42	<u>1548</u>
P16		45	<u>1615</u>	75		45	<u>1554</u>
P17		48		80		48	<u>1559</u>
P18		51		85		51	<u>1563</u>
P19		54		90		54	<u>1565</u>
P20		57				57	<u>1567</u>
		60				60	<u>1571</u>

WESTERN TESTING CO., INC.

Pressure Data

Date _____

Test Ticket No. 15307

Recorder No. _____ Capacity _____ Location _____ Ft

Clock No. _____ Elevation _____ Well Temperature _____ °F

Point	Pressure		Time Given	Time Computed
A Initial Hydrostatic Mud _____	P.S.I.	Open Tool _____	M _____	
B First Initial Flow Pressure _____	P.S.I.	First Flow Pressure _____	Mins. _____	Mins. _____
C First Final Flow Pressure _____	P.S.I.	Initial Closed-in Pressure _____	Mins. _____	Mins. _____
D Initial Closed-in Pressure _____	P.S.I.	Second Flow Pressure _____	Mins. _____	Mins. _____
E Second Initial Flow Pressure _____	P.S.I.	Final Closed-in Pressure _____	Mins. _____	Mins. _____
F Second Final Flow Pressure _____	P.S.I.			
G Final Closed-in Pressure _____	P.S.I.			
H Final Hydrostatic Mud _____	P.S.I.			

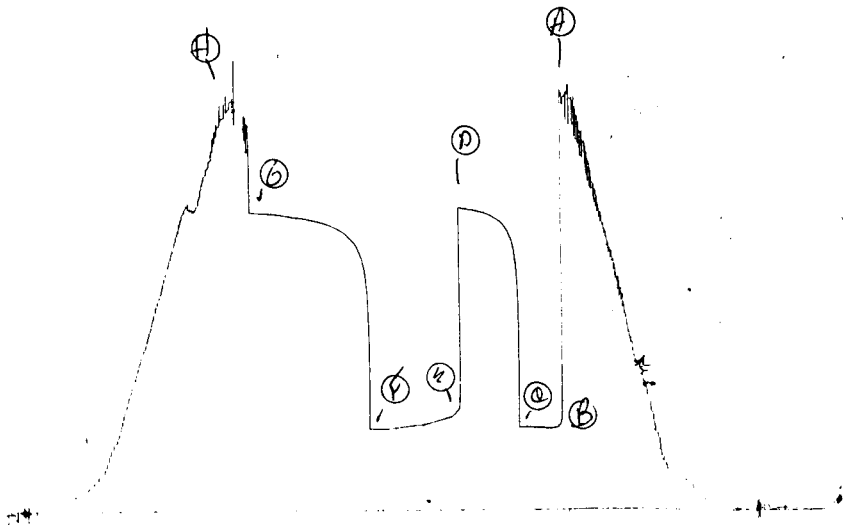
PRESSURE BREAKDOWN

First Flow Pressure		Initial Shut-In		Second Flow Pressure		Final Shut-In	
Breakdown: _____ Inc.		Breakdown: _____ Inc.		Breakdown: _____ Inc.		Breakdown: _____ Inc.	
of <u>5</u> mins. and a		of <u>3</u> mins. and a		of <u>5</u> mins. and a		of <u>3</u> mins. and a	
final inc. of <u>0</u> Min.		final inc. of <u>0</u> Min.		final inc. of <u>0</u> Min.		final inc. of <u>0</u> Min.	
Point Mins.	Press.	Point Minutes	Press.	Point Minutes	Press.	Point Minutes	Press.
P 1 _____	_____	63 _____	_____	_____	_____	63 _____	1575
P 2 _____	_____	66 _____	_____	_____	_____	66 _____	1579
P 3 _____	_____	69 _____	_____	_____	_____	69 _____	1581
P 4 _____	_____	72 _____	_____	_____	_____	72 _____	1583
P 5 _____	_____	75 _____	_____	_____	_____	75 _____	1584
P 6 _____	_____	78 _____	_____	_____	_____	78 _____	1585
P 7 _____	_____	81 _____	_____	_____	_____	81 _____	1587
P 8 _____	_____	84 _____	_____	_____	_____	84 _____	1588
P 9 _____	_____	87 _____	_____	_____	_____	87 _____	1589
P10 _____	_____	90 _____	_____	_____	_____	90 _____	1589
P11 _____	_____	93 _____	_____	_____	_____	93 _____	_____
P12 _____	_____	96 _____	_____	_____	_____	96 _____	_____
P13 _____	_____	99 _____	_____	_____	_____	99 _____	_____
P14 _____	_____	102 _____	_____	_____	_____	102 _____	_____
P15 _____	_____	105 _____	_____	_____	_____	105 _____	_____
P16 _____	_____	108 _____	_____	_____	_____	108 _____	_____
P17 _____	_____	111 _____	_____	_____	_____	111 _____	_____
P18 _____	_____	114 _____	_____	_____	_____	114 _____	_____
P19 _____	_____	117 _____	_____	_____	_____	117 _____	_____
P20 _____	_____	120 _____	_____	_____	_____	120 _____	_____

2606 DST#2

9

Lot # 15307
I



Company American Energies Corporation Lease & Well No. Chain #1
 Elevation 1627 Kelly Bushing - 1617 Ground Level - Mississippi Ft. Ticket No. 15307
 Date 4/25/82 Sec. 18 Twp. 31S Range 11W County Barber State Kansas
 Test Approved by Dwight J. Williams Western Representative Rod Tritt

Formation Test No. 2 Interval Tested from 4312 ft. to 4342 ft. Total Depth 4342 ft.
 Packer Depth 4307 ft. Size 6 3/4 in. Packer Depth - ft. Size - in.
 Packer Depth 4312 ft. Size 6 3/4 in. Packer Depth - ft. Size - in.

Depth of Selective Zone Set -
 Top Recorder Depth (Inside) 4316 ft. Recorder Number 2606 Cap. 4150
 Bottom Recorder Depth (Outside) 4319 ft. Recorder Number 4332 Cap. 4200
 Below Straddle Recorder Depth - ft. Recorder Number - Cap. -

Drilling Contractor Husky Drilling Co. Rig #2 Drill Collar Length 374 I. D. 2 1/4 in.
 Mud Type monpac Viscosity 53 Weight Pipe Length 306 I. D. 2 1/2 in.
 Weight 9.3 Water Loss 12.0 cc. Drill Pipe Length -- I. D. 3.8 in.
 Chlorides 2,000 P.P.M. Test Tool Length 25 ft. Tool Size 5 1/2 OD in.
 Jars: Make WTC Serial Number 411 Anchor Length 30 ft. Size 5 1/2 OD in.
 Did Well Flow? No Reversed Out No Surface Choke Size 3/4 in. Bottom Choke Size 3/4 in.
 Main Hole Size 7 7/8 in. Tool Joint Size 4 1/2 FH in.

Blow: Strong blow throughout test. Gas to surface in one minute. See attached sheet for gas measurements.

Recovered 150 ft. of gassy mud (trace of oil)
 Recovered 30 ft. of gassy watery mud 50% gas; 35% mud; 15% water
 Recovered - ft. of Chlorides Top: 20,000 ppm
 Recovered - ft. of Bottom ; 32,000 ppm
 Recovered - ft. of Geologist kept chart #4332
 Remarks: Geologist kept chart #4332

Time Set Packer(s)	6:30	A.M.	Time Started Off Bottom	10:15	A.M.	Maximum Temperature	123°
Initial Hydrostatic Pressure			(A)	2196	P.S.I.		
Initial Flow Period			Minutes	30	(B)	444	P.S.I. to (C) 448 P.S.I.
Initial Closed In Period			Minutes	45	(D)	1615	P.S.I.
Final Flow Period			Minutes	65	(E)	537	P.S.I. to (F) 437 P.S.I.
Final Closed In Period			Minutes	87	(G)	1589	P.S.I.
Final Hydrostatic Pressure			(H)	2167	P.S.I.		

GAS FLOW REPORT

Date 4/25/82 Ticket 15307 Company American Energies Corporation
 Well Name and No. _____ Chain # 1 Dst No. 2 Interval Tested 4312-4342
 County Barber State Kansas Sec. 18 Twp. 31S Rg. 11W

Time Gauge in Min.	P.S.I. on Merla Orifice Well Tester	Size of Orifice	P.S.I. on Pitot Tester	P.S.I. on Side Static Tester	Description of Flow
PRE FLOW					
1 min.			1" orifice		Gas to surface
10 min.	56.0 PSIG		1" orifice		1,509,000 CFPD
20 min.	62.0 PSIG		1" orifice		1,639,000 CFPD
30 min.	62.0 PSIG		1" orifice		1,639,000 CFPD

SECOND FLOW					
10 min.	66.0 PSIG		1" orifice		1,726,000 CFPD
20 min.	66.0 PSIG		1" orifice		1,726,000 CFPD
30 min.	64.0 PSIG		1" orifice		1,683,000 CFPD
40 min.	64.0 PSIG		1" orifice		1,683,000 CFPD
50 min.	64.0 PSIG		1" orifice		1,683,000 CFPD
60 min.	64.0 PSIG		1" orifice		1,683,000 CFPD

GAS BOTTLE

Serial No. 78 Date Bottle Filled 4/25/82 Date to be Invoiced 4/25/82

Requisition and Provisions for high pressure stainless steel gas bottles. Western Testing Co., Inc. shall not be liable for damage of any kind to property or personnel of the one whom gas bottle is filled or for any loss suffered or sustained directly or indirectly through the use of these bottles. By signing of this ticket showing receipt of a gas testing bottle, the undersigned agrees for himself and as agent for operator, to return this bottle to Western Testing Co., Inc. within thirty (30) days free of charge, or be invoiced in the amount of \$75.00 (total charge). Should valve or seal plug be missing or damaged beyond repair, operator shall be invoiced for repairs at our invoiced price.

All charges subject to 1½% per month, equal to 18% interest per annum after 30 days from date of invoice. Any expense incurred for collection will be added to the original amount.

COMPANY'S NAME _____

Authorized by _____

WESTERN TESTING CO., INC.
Pressure Data

Date 4/25/82 Test Ticket No. 15307
 Recorder No. 2606 Capacity 4150 Location 4316 Ft.
 Clock No. --- Elevation 1627 Kelly Bushing Well Temperature 123 °F

Point	Pressure		Time Given	Time Computed
A Initial Hydrostatic Mud	<u>2196</u>	P.S.I.	<u>6:30A</u>	<u>M</u>
B First Initial Flow Pressure	<u>444</u>	P.S.I.	<u>30</u>	<u>30</u>
C First Final Flow Pressure	<u>448</u>	P.S.I.	<u>45</u>	<u>45</u>
D Initial Closed-in Pressure	<u>1615</u>	P.S.I.	<u>60</u>	<u>65</u>
E Second Initial Flow Pressure	<u>537</u>	P.S.I.	<u>90</u>	<u>87</u>
F Second Final Flow Pressure	<u>437</u>	P.S.I.		
G Final Closed-in Pressure	<u>1589</u>	P.S.I.		
H Final Hydrostatic Mud	<u>2167</u>	P.S.I.		

PRESSURE BREAKDOWN

First Flow Pressure
 Breakdown: 6 Inc.
 of 5 mins. and a
 final inc. of 0 Min.

Initial Shut-In
 Breakdown: 15 Inc.
 of 3 mins. and a
 final inc. of 0 Min.

Second Flow Pressure
 Breakdown: 13 Inc.
 of 5 mins. and a
 final inc. of 0 Min.

Final Shut-In
 Breakdown: 29 Inc.
 of 3 mins. and a
 final inc. of 0 Min.

Point Mins.	Press.	Point Minutes	Press.	Point Minutes	Press.	Point Minutes	Press.
P 1 <u>0</u>	<u>444</u>	<u>0</u>	<u>448</u>	<u>0</u>	<u>537</u>	<u>0</u>	<u>437</u>
P 2 <u>5</u>	<u>444</u>	<u>3</u>	<u>1161</u>	<u>5</u>	<u>506</u>	<u>3</u>	<u>1215</u>
P 3 <u>10</u>	<u>444</u>	<u>6</u>	<u>1386</u>	<u>10</u>	<u>493</u>	<u>6</u>	<u>1340</u>
P 4 <u>15</u>	<u>445</u>	<u>9</u>	<u>1460</u>	<u>15</u>	<u>480</u>	<u>9</u>	<u>1392</u>
P 5 <u>20</u>	<u>446</u>	<u>12</u>	<u>1505</u>	<u>20</u>	<u>471</u>	<u>12</u>	<u>1426</u>
P 6 <u>25</u>	<u>446</u>	<u>15</u>	<u>1534</u>	<u>25</u>	<u>461</u>	<u>15</u>	<u>1450</u>
P 7 <u>30</u>	<u>448</u>	<u>18</u>	<u>1549</u>	<u>30</u>	<u>456</u>	<u>18</u>	<u>1475</u>
P 8 _____		<u>21</u>	<u>1564</u>	<u>35</u>	<u>452</u>	<u>21</u>	<u>1490</u>
P 9 _____		<u>24</u>	<u>1577</u>	<u>40</u>	<u>447</u>	<u>24</u>	<u>1501</u>
P10 _____		<u>27</u>	<u>1587</u>	<u>45</u>	<u>441</u>	<u>27</u>	<u>1511</u>
P11 _____		<u>30</u>	<u>1594</u>	<u>50</u>	<u>437</u>	<u>30</u>	<u>1521</u>
P12 _____		<u>33</u>	<u>1600</u>	<u>55</u>	<u>437</u>	<u>33</u>	<u>1529</u>
P13 _____		<u>36</u>	<u>1604</u>	<u>60</u>	<u>437</u>	<u>36</u>	<u>1537</u>
P14 _____		<u>39</u>	<u>1606</u>	<u>65</u>	<u>437</u>	<u>39</u>	<u>1543</u>
P15 _____		<u>42</u>	<u>1610</u>			<u>42</u>	<u>1548</u>
P16 _____		<u>45</u>	<u>1615</u>			<u>45</u>	<u>1554</u>
P17 _____						<u>48</u>	<u>1559</u>
P18 _____						<u>51</u>	<u>1563</u>
P19 _____						<u>54</u>	<u>1565</u>
P20 _____						<u>57</u>	<u>1567</u>
						<u>60</u>	<u>1571</u>

WESTERN TESTING CO., INC.
Pressure Data

Date 4/25/82 Test Ticket No. 15307
 Recorder No. 2606 Capacity 4150 Location 4316 Ft.
 Clock No. --- Elevation 1627 Kelly Bushing Well Temperature 123 °F

Point	Pressure			Time Given	Time Computed
		P.S.I.			
A Initial Hydrostatic Mud	<u>2196</u>	P.S.I.	Open Tool	6:30A	M
B First Initial Flow Pressure	<u>444</u>	P.S.I.	First Flow Pressure	30	Mins. 30 Mins.
C First Final Flow Pressure	<u>448</u>	P.S.I.	Initial Closed-in Pressure	45	Mins. 45 Mins.
D Initial Closed-in Pressure	<u>1615</u>	P.S.I.	Second Flow Pressure	60	Mins. 65 Mins.
E Second Initial Flow Pressure	<u>537</u>	P.S.I.	Final Closed-in Pressure	90	Mins. 87 Mins.
F Second Final Flow Pressure	<u>437</u>	P.S.I.			
G Final Closed-in Pressure	<u>1589</u>	P.S.I.			
H Final Hydrostatic Mud	<u>2167</u>	P.S.I.			

PRESSURE BREAKDOWN

First Flow Pressure Breakdown: <u>6</u> Inc. of <u>5</u> mins. and a final inc. of <u>0</u> Min.	Initial Shut-In Breakdown: <u>15</u> Inc. of <u>3</u> mins. and a final inc. of <u>0</u> Min.	Second Flow Pressure Breakdown: <u>13</u> Inc. of <u>5</u> mins. and a final inc. of <u>0</u> Min.	Final Shut-In Breakdown: <u>29</u> Inc. of <u>3</u> mins. and a final inc. of <u>0</u> Min.
--	---	--	---

Point Mins.	First Flow Pressure		Initial Shut-In		Second Flow Pressure		Final Shut-In	
	Point Minutes	Press.	Point Minutes	Press.	Point Minutes	Press.	Point Minutes	Press.
P 1							63	1575
P 2							66	1579
P 3							69	1581
P 4							72	1583
P 5							75	1584
P 6							78	1585
P 7							81	1587
P 8							84	1588
P 9							87	1589
P10								
P11								
P12								
P13								
P14								
P15								
P16								
P17								
P18								
P19								
P20								



WESTERN TESTING CO., INC.
FORMATION TESTING

TICKET

No 15308

OK

P. O. BOX 1599 PHONE (316) 262-5861
WICHITA, KANSAS 67201

Elevation 1627 LB Formation Lower Miss - Kinderhook Eff. Pay Ft.

District PRATT Date 4-26-82 Customer Order No.

COMPANY NAME American Energy Corp
ADDRESS 570 4th Financial Center Wichita Kansas 67202

LEASE AND WELL NO. #1 Chain COUNTY Barber STATE Kansas Sec. 18 Twp. 31S Rge. 11a

Mail Invoice To SAME Co. Name Address No. Copies Requested 5

Mail Charts To SAME Co. Name Address No. Copies Requested 5

Formation Test No. 3 Interval Tested From 4420 ft. to 4465 ft. Total Depth 4465 ft.
Packer Depth 4415 ft. Size 6 3/4 in.
Packer Depth 4420 ft. Size 6 3/4 in.

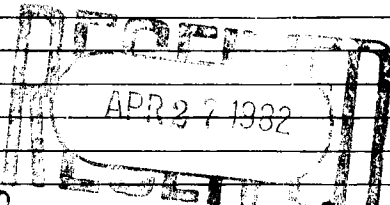
Top Recorder Depth (Inside) 4424 ft. Recorder Number 2606 Cap. 4150
Bottom Recorder Depth (Outside) 4427 ft. Recorder Number 4332 Cap. 4200
Below Straddle Recorder Depth - ft. Recorder Number - Cap. -

Drilling Contractor Husky Drilling Co Drill Collar Length 374 I. D. 2 1/4 in.
Mud Type Monpac Viscosity 50 Weight Pipe Length 306 I. D. 2 1/2 in.
Weight 9.5 Water Loss 13.6 cc. Drill Pipe Length 3717 I. D. 3.8 in.
Chlorides 27,000 P.P.M. Test Tool Length 25 ft. Tool Size 5/8 OD in.
Jars: Make WTC Serial Number 41 Anchor Length 45 ft. Size 5/8 OD in.
Did Well Flow? NO Reversed Out NO Surface Choke Size 3/4 in. Bottom Choke Size 3/4 in.
Main Hole Size 7 7/8 in. Tool Joint Size 4 1/2 FH in.

Blow: Very weak blow for 20 minutes on initial flow period
Very weak blow for 15 min on final flow period
Recovered 20 ft. of drilling mud Chlorides 30,000 PPM

Recovered ft. of
Recovered ft. of
Recovered ft. of
Recovered ft. of

Remarks:



Time On Location 11:00 A.M. 4-25 P.M. Time Pick Up Tool 3:00 A.M. P.M. Time Off Location 12:00 A.M. P.M.

Time Set Packer(s) 5:15 A.M. P.M. Time Started Off Bottom 8:15 A.M. P.M. Maximum Temperature 124°F

Initial Hydrostatic Pressure (A) 2292 P.S.I.
Initial Flow Period Minutes 30 (B) 52 P.S.I. to (C) 31 P.S.I.
Initial Closed In Period Minutes 45 (D) 31 P.S.I.
Final Flow Period Minutes 60 (E) 31 P.S.I. to (F) 31 P.S.I.
Final Closed In Period Minutes 45 (G) 31 P.S.I.
Final Hydrostatic Pressure (H) 2271 P.S.I.

COMPANY TERMS

Western Testing Co., Inc. shall not be liable for damages of any kind to the property or personnel of the one for whom a test is made or for any loss suffered or sustained directly or indirectly through the use of its equipment, of its statements or opinion concerning the results of any test. Tools lost or damaged in the hole shall be paid at cost by the party for whom the test is made.

All charges subject to 12% interest after 60 days from date of invoice. Any expense incurred for collection will be added to the original amount.

Test Approved By: [Signature]
Signature of Customer or his authorized representative
Western Representative: [Signature] Thank you

FIELD INVOICE

Open Hole Test 675.00
Misrun \$
Straddle Test \$
Jars 300.00
Selective Zone \$
Safety Joint \$
Standby \$
Evaluation \$
Extra Packer \$
Circ. Sub. \$
Mileage \$
Fluid Sampler \$
Extra Charts \$
Insurance \$
Telecopier \$
9 copies 975.00

WESTERN TESTING CO., INC.

Pressure Data

Date: 4-26-82 Test Ticket No. 15308
 Recorder No. 2606 Capacity 4150 Location 4424 Ft.
 Clock No. --- Elevation 1627 Well Temperature 124 °F

Point	Pressure	Open Tool	Time Given	Time Computed
A Initial Hydrostatic Mud	<u>2274</u> P.S.I.		<u>5:15</u> A	
B First Initial Flow Pressure	<u>27</u> P.S.I.	First Flow Pressure	<u>30</u> Mins.	<u>30</u> Mins.
C First Final Flow Pressure	<u>27</u> P.S.I.	Initial Closed-in Pressure	<u>45</u> Mins.	<u>45</u> Mins.
D Initial Closed-in Pressure	<u>30</u> P.S.I.	Second Flow Pressure	<u>60</u> Mins.	<u>60</u> Mins.
E Second Initial Flow Pressure	<u>27</u> P.S.I.	Final Closed-in Pressure	<u>45</u> Mins.	<u>54</u> Mins.
F Second Final Flow Pressure	<u>28</u> P.S.I.			
G Final Closed-in Pressure	<u>29</u> P.S.I.			
H Final Hydrostatic Mud	<u>2274</u> P.S.I.			

PRESSURE BREAKDOWN

First Flow Pressure Breakdown: <u>4</u> Inc. of <u>5</u> mins. and a final inc. of <u>0</u> Min.		Initial Shut-In Breakdown: <u>15</u> Inc. of <u>3</u> mins. and a final inc. of <u>0</u> Min.		Second Flow Pressure Breakdown: <u>12</u> Inc. of <u>5</u> mins. and a final inc. of <u>0</u> Min.		Final Shut-In Breakdown: <u>18</u> Inc. of <u>3</u> mins. and a final inc. of <u>0</u> Min.	
Point Mins.	Press.	Point Minutes	Press.	Point Minutes	Press.	Point Minutes	Press.
P 1	<u>27</u>	0	<u>27</u>	0	<u>27</u>	0	<u>28</u>
P 2		3		5		3	
P 3		6		10		6	
P 4		9	<u>27</u>	15	<u>27</u>	9	
P 5		12	<u>28</u>	20		12	<u>28</u>
P 6		15	<u>28</u>	25		15	<u>29</u>
P 7	<u>27</u>	18	<u>29</u>	30	<u>27</u>	18	
P 8		21	<u>29</u>	35	<u>28</u>	21	
P 9		24	<u>30</u>	40	<u>28</u>	24	
P 10		27	<u>30</u>	45	<u>29</u>	27	
P 11		30	<u>30</u>	50	<u>29</u>	30	<u>29</u>
P 12		33		55	<u>28</u>	33	
P 13		36		60	<u>28</u>	36	
P 14		39		<u>65</u>		39	
P 15		42		<u>70</u>		42	
P 16		45	<u>30</u>	<u>75</u>		45	<u>29</u>
P 17		<u>48</u>		<u>80</u>		48	
P 18		<u>51</u>		<u>85</u>		51	
P 19		54		90		54	<u>29</u>
P 20		57				<u>57</u>	
		60				<u>60</u>	

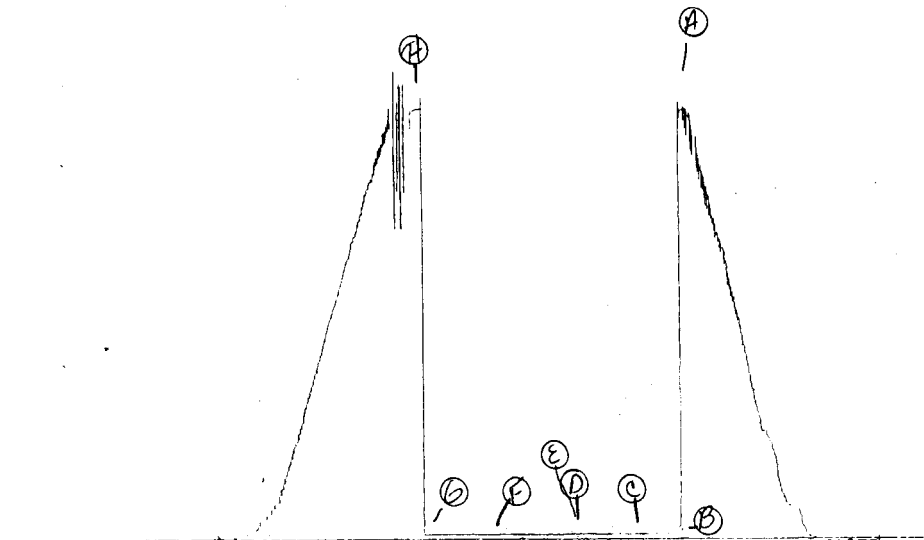
2606

1251

7

JK # 15308

I



Company American Energies Corporation Lease & Well No. Chain #1
 Elevation 1627 Kelly Bushing - 1617 Ground Level - Lower Mississippi Effective Pay 15308
 Date 4/26/82 Sec. 18 Twp. 31S Range 11W County Barber State Kansas
 Test Approved by Dwight J. Williams Western Representative Rod Tritt

Formation Test No. 3 Interval Tested from 4420 ft. to 4465 ft. Total Depth 4465 ft.
 Packer Depth 4415 ft. Size 6 3/4 in. Packer Depth - ft. Size - in.
 Packer Depth 4420 ft. Size 6 3/4 in. Packer Depth - ft. Size - in.

Depth of Selective Zone Set -
 Top Recorder Depth (Inside) 4424 ft. Recorder Number 2606 Cap. 4150
 Bottom Recorder Depth (Outside) 4427 ft. Recorder Number 4332 Cap. 4200
 Below Straddle Recorder Depth - ft. Recorder Number - Cap. -

Drilling Contractor Husky Drilling Co. Rig #2 Drill Collar Length 374 I. D. 2 1/4 in.
 Mud Type monpac Viscosity 50 Weight Pipe Length 306 I. D. 2 1/2 in.
 Weight 9.5 Water Loss 13.6 cc. Drill Pipe Length 3717 I. D. 3.8 in.
 Chlorides 27,000 P.P.M. Test Tool Length 25 ft. Tool Size 5 1/2 OD in.
 Jars: Make WIC Serial Number 401 Anchor Length 45 ft. Size 5 1/2 OD in.
 Did Well Flow? No Reversed Out No Surface Choke Size 3/4 in. Bottom Choke Size 3/4 in.
 Main Hole Size 7 7/8 in. Tool Joint Size 4 1/2 FH in.

Blow: Very weak blow for twenty minutes on initial flow period. Very weak blow for fifteen minutes on final flow period.

Recovered 20 ft. of drilling mud Chlorides 30,000 ppm
 Recovered _____ ft. of _____
 Recovered _____ ft. of _____
 Recovered _____ ft. of _____
 Recovered _____ ft. of _____

Remarks: _____

Time Set Packer(s) 5:15 ~~P.M.~~ A.M. Time Started Off Bottom 8:15 ~~P.M.~~ A.M. Maximum Temperature 124°
 Initial Hydrostatic Pressure (A) 2274 P.S.I.
 Initial Flow Period Minutes 30 (B) 27 P.S.I. to (C) 27 P.S.I.
 Initial Closed In Period Minutes 45 (D) 30 P.S.I.
 Final Flow Period Minutes 60 (E) 27 P.S.I. to (F) 28 P.S.I.
 Final Closed In Period Minutes 54 (G) 29 P.S.I.
 Final Hydrostatic Pressure (H) 2274 P.S.I.

WESTERN TESTING CO., INC.

Pressure Data

Date 4/26/82 Test Ticket No. 15308
 Recorder No. 2606 Capacity 4150 Location 4424 Ft.
 Clock No. --- Elevation 1627 Kelly Bushing Well Temperature 124 °F

Point	Pressure		Time Given	Time Computed
A Initial Hydrostatic Mud	<u>2274</u>	P.S.I.	<u>5:15A</u>	<u>M</u>
B First Initial Flow Pressure	<u>27</u>	P.S.I.	<u>30</u>	<u>30</u> Mins.
C First Final Flow Pressure	<u>27</u>	P.S.I.	<u>45</u>	<u>45</u> Mins.
D Initial Closed-in Pressure	<u>30</u>	P.S.I.	<u>60</u>	<u>60</u> Mins.
E Second Initial Flow Pressure	<u>27</u>	P.S.I.	<u>45</u>	<u>54</u> Mins.
F Second Final Flow Pressure	<u>28</u>	P.S.I.		
G Final Closed-in Pressure	<u>29</u>	P.S.I.		
H Final Hydrostatic Mud	<u>2274</u>	P.S.I.		

PRESSURE BREAKDOWN

First Flow Pressure Breakdown: <u>6</u> Inc. of <u>5</u> mins. and a final inc. of <u>0</u> Min.		Initial Shut-In Breakdown: <u>15</u> Inc. of <u>3</u> mins. and a final inc. of <u>0</u> Min.		Second Flow Pressure Breakdown: <u>12</u> Inc. of <u>5</u> mins. and a final inc. of <u>0</u> Min.		Final Shut-In Breakdown: <u>18</u> Inc. of <u>3</u> mins. and a final inc. of <u>0</u> Min.	
Point Mins.	Press.	Point Minutes	Press.	Point Minutes	Press.	Point Minutes	Press.
P 1	<u>0</u>	<u>0</u>	<u>27</u>	<u>0</u>	<u>27</u>	<u>0</u>	<u>28</u>
P 2	<u>5</u>	<u>3</u>	<u>27</u>	<u>5</u>	<u>27</u>	<u>3</u>	<u>28</u>
P 3	<u>10</u>	<u>6</u>	<u>27</u>	<u>10</u>	<u>27</u>	<u>6</u>	<u>28</u>
P 4	<u>15</u>	<u>9</u>	<u>27</u>	<u>15</u>	<u>27</u>	<u>9</u>	<u>28</u>
P 5	<u>20</u>	<u>12</u>	<u>28</u>	<u>20</u>	<u>27</u>	<u>12</u>	<u>28</u>
P 6	<u>25</u>	<u>15</u>	<u>28</u>	<u>25</u>	<u>27</u>	<u>15</u>	<u>29</u>
P 7	<u>30</u>	<u>18</u>	<u>29</u>	<u>30</u>	<u>27</u>	<u>18</u>	<u>29</u>
P 8		<u>21</u>	<u>29</u>	<u>35</u>	<u>28</u>	<u>21</u>	<u>29</u>
P 9		<u>24</u>	<u>30</u>	<u>40</u>	<u>28</u>	<u>24</u>	<u>29</u>
P10		<u>27</u>	<u>30</u>	<u>45</u>	<u>29</u>	<u>27</u>	<u>29</u>
P11		<u>30</u>	<u>30</u>	<u>50</u>	<u>29</u>	<u>30</u>	<u>29</u>
P12		<u>33</u>	<u>30</u>	<u>55</u>	<u>28</u>	<u>33</u>	<u>29</u>
P13		<u>36</u>	<u>30</u>	<u>60</u>	<u>28</u>	<u>36</u>	<u>29</u>
P14		<u>39</u>	<u>30</u>			<u>39</u>	<u>29</u>
P15		<u>42</u>	<u>30</u>			<u>42</u>	<u>29</u>
P16		<u>45</u>	<u>30</u>			<u>45</u>	<u>29</u>
P17						<u>48</u>	<u>29</u>
P18						<u>51</u>	<u>29</u>
P19						<u>54</u>	<u>29</u>
P20							