

Company Associated Petroleum Consultants & Presley Oil Company Lease & Well No. Mott Ranch #2
 Elevation 1600 Kelly Bushing Location Mississippi Effective Pay - Ft. Ticket No. 15039
 Date 11/5/81 Sec. 2 Twp. 31S Range 12W County Barber State Kansas
 Test Approved by W. W. Scott Western Representative Cliff Scheuerman

Formation Test No. 1 Interval Tested from 4252 ft. to 4265 ft. Total Depth 4265 ft.
 Packer Depth 4247 ft. Size 6 5/8 in. Packer Depth 4252 ft. Size 6 5/8 in.
 Packer Depth - ft. Size - in. Packer Depth - ft. Size - in.
 Depth of Selective Zone Set -

Top Recorder Depth (Inside) 4255 ft. Recorder Number 1563 Cap. 4200
 Bottom Recorder Depth (Outside) 4258 ft. Recorder Number 1562 Cap. 3900
 Below Straddle Recorder Depth - ft. Recorder Number - Cap. -

Drilling Contractor Heartland Drilling Rig #1 Drill Collar Length 455 I. D. 2.25 in.
 Mud Type Chemical Viscosity 48 Weight Pipe Length - I. D. - in.
 Weight 9.4 Water Loss 11.2 cc. Drill Pipe Length 3765 I. D. 3.8 in.
 Chlorides 10,000 P.P.M. Test Tool Length 22 ft. Tool Size 5 1/2 in.
 Jars: Make - Serial Number - Anchor Length 13 ft. Size 5 1/2 in.
 Did Well Flow? No Reversed Out No Surface Choke Size 3/4 in. Bottom Choke Size 3/4 in.
 Main Hole Size 7 7/8 in. Tool Joint Size 4 1/2XH in.

Blow: Initial flow period good building to strong in 5 minutes. Final flow period strong blow throughout.

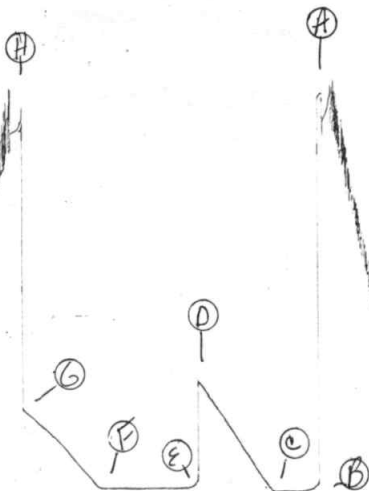
Recovered 1730 ft. of gas in pipe
 Recovered 60 ft. of gas & oil cut mud - 15% oil; 5% water; 80% mud
 Recovered 120 ft. of gas & mud cut oil - 46% oil; 23% water; 31% mud
 Recovered ft. of
 Recovered ft. of

Remarks:

Time Set Packer(s)	<u>12:45</u>	<u>A.M.</u> P.M.	Time Started Off Bottom	<u>4:25</u>	<u>A.M.</u> P.M.	Maximum Temperature	<u>123</u>
Initial Hydrostatic Pressure			(A)	<u>2241</u>		P.S.I.	
Initial Flow Period			Minutes	<u>30</u>	(B)	<u>129</u>	P.S.I. to (C) <u>99</u> P.S.I.
Initial Closed In Period			Minutes	<u>60</u>	(D)	<u>700</u>	P.S.I.
Final Flow Period			Minutes	<u>70</u>	(E)	<u>150</u>	P.S.I. to (F) <u>119</u> P.S.I.
Final Closed In Period			Minutes	<u>60</u>	(G)	<u>545</u>	P.S.I.
Final Hydrostatic Pressure			(H)	<u>2125</u>		P.S.I.	

TR+ # 15039
I

1563



WESTERN TESTING CO., INC.

Pressure Data

Date 11/5/81 Test Ticket No. 15039
 Recorder No. 1563 Capacity 4200 Location _____ Ft. _____
 Clock No. - Elevation 1600 Kelly Bushing Well Temperature 123 °F

Point	Pressure		Time Given	Time Computed
A Initial Hydrostatic Mud	<u>2241</u> P.S.I.	Open Tool	<u>12:45P</u>	<u>M</u>
B First Initial Flow Pressure	<u>129</u> P.S.I.	First Flow Pressure	<u>30</u> Mins.	<u>30</u> Mins.
C First Final Flow Pressure	<u>99</u> P.S.I.	Initial Closed-in Pressure	<u>60</u> Mins.	<u>60</u> Mins.
D Initial Closed-in Pressure	<u>700</u> P.S.I.	Second Flow Pressure	<u>70</u> Mins.	<u>70</u> Mins.
E Second Initial Flow Pressure	<u>150</u> P.S.I.	Final Closed-in Pressure	<u>60</u> Mins.	<u>60</u> Mins.
F Second Final Flow Pressure	<u>119</u> P.S.I.			
G Final Closed-in Pressure	<u>545</u> P.S.I.			
H Final Hydrostatic Mud	<u>2125</u> P.S.I.			

PRESSURE BREAKDOWN

First Flow Pressure
 Breakdown: 6 Inc.
 of 5 mins. and a
 final inc. of 0 Min.

Initial Shut-In
 Breakdown: 20 Inc.
 of 3 mins. and a
 final inc. of 0 Min.

Second Flow Pressure
 Breakdown: 14 Inc.
 of 5 mins. and a
 final inc. of 0 Min.

Final Shut-In
 Breakdown: 20 Inc.
 of 3 mins. and a
 final inc. of 0 Min.

Point Mins.	Press.	Point Minutes	Press.	Point Minutes	Press.	Point Minutes	Press.
P 1 <u>0</u>	<u>129</u>	<u>0</u>	<u>99</u>	<u>0</u>	<u>160</u>	<u>0</u>	<u>119</u>
P 2 <u>5</u>	<u>112</u>	<u>3</u>	<u>99</u>	<u>5</u>	<u>123</u>	<u>3</u>	<u>123</u>
P 3 <u>10</u>	<u>101</u>	<u>6</u>	<u>119</u>	<u>10</u>	<u>119</u>	<u>6</u>	<u>142</u>
P 4 <u>15</u>	<u>97</u>	<u>9</u>	<u>151</u>	<u>15</u>	<u>119</u>	<u>9</u>	<u>172</u>
P 5 <u>20</u>	<u>99</u>	<u>12</u>	<u>177</u>	<u>20</u>	<u>119</u>	<u>12</u>	<u>194</u>
P 6 <u>25</u>	<u>100</u>	<u>15</u>	<u>207</u>	<u>25</u>	<u>119</u>	<u>15</u>	<u>220</u>
P 7 <u>30</u>	<u>99</u>	<u>18</u>	<u>244</u>	<u>30</u>	<u>119</u>	<u>18</u>	<u>244</u>
P 8 _____		<u>21</u>	<u>282</u>	<u>35</u>	<u>119</u>	<u>21</u>	<u>269</u>
P 9 _____		<u>24</u>	<u>315</u>	<u>40</u>	<u>116</u>	<u>24</u>	<u>295</u>
P10 _____		<u>27</u>	<u>347</u>	<u>45</u>	<u>116</u>	<u>27</u>	<u>321</u>
P11 _____		<u>30</u>	<u>381</u>	<u>50</u>	<u>116</u>	<u>30</u>	<u>349</u>
P12 _____		<u>33</u>	<u>420</u>	<u>55</u>	<u>119</u>	<u>33</u>	<u>373</u>
P13 _____		<u>36</u>	<u>453</u>	<u>60</u>	<u>119</u>	<u>36</u>	<u>393</u>
P14 _____		<u>39</u>	<u>487</u>	<u>65</u>	<u>119</u>	<u>39</u>	<u>414</u>
P15 _____		<u>42</u>	<u>517</u>	<u>70</u>	<u>119</u>	<u>42</u>	<u>433</u>
P16 _____		<u>45</u>	<u>547</u>			<u>45</u>	<u>450</u>
P17 _____		<u>48</u>	<u>579</u>			<u>48</u>	<u>470</u>
P18 _____		<u>51</u>	<u>604</u>			<u>51</u>	<u>494</u>
P19 _____		<u>54</u>	<u>643</u>			<u>54</u>	<u>511</u>
P20 _____		<u>57</u>	<u>674</u>			<u>57</u>	<u>530</u>
WTC - 4		<u>60</u>	<u>700</u>			<u>60</u>	<u>545</u>

Company Associated Petroleum Consultants & Presley Oil Company Lease & Well No. Mott Ranch #2
 Elevation - Formation Mississippi Effective Pay - Ft. Ticket No. 14207
 Date 11/6/81 Sec. 2 Twp. 31S Range 12W County Barber State Kansas
 Test Approved by W. W. Scott Western Representative Richard Howell

Formation Test No. 2 Interval Tested from 4265 ft. to 4280 ft. Total Depth 4280 ft.
 Packer Depth 4260 ft. Size 6 3/4 in. Packer Depth - ft. Size - in.
 Packer Depth 4265 ft. Size 6 3/4 in. Packer Depth - ft. Size - in.
 Depth of Selective Zone Set -

Top Recorder Depth (Inside) 4268 ft. Recorder Number 13402 Cap. 4025
 Bottom Recorder Depth (Outside) 4277 ft. Recorder Number 13267 Cap. 4050
 Below Straddle Recorder Depth - ft. Recorder Number - Cap. -

Drilling Contractor Heartland Drilling Rig #1 Drill Collar Length 465 I. D. 2.2 in.
 Mud Type Chemical Viscosity 48 Weight Pipe Length - I. D. - in.
 Weight 9.3 Water Loss 11.2 cc. Drill Pipe Length 3778 I. D. 3.8 in.
 Chlorides 10,000 P.P.M. Test Tool Length 22 ft. Tool Size 5 1/2 in.
 Jars: Make - Serial Number - Anchor Length 15 ft. Size 5 1/2 in.
 Did Well Flow? No Reversed Out No Surface Choke Size 3/4 in. Bottom Choke Size 3/4 in.
 Main Hole Size 7 7/8 in. Tool Joint Size 4 1/2 XH in.

Blow: Initial flow period 4 minutes to bottom of bucket then depleted to 3 inches.
Final flow period good 7 inches into bucket.

Recovered 558 ft. of gas in pipe
 Recovered 62 ft. of oil & gas specked mud - less than 1% oil & Gas
 Recovered 62 ft. of oil & gas cut mud - 4% gas; 5% oil; 5% water; 85% mud
 Recovered - ft. of Chlorides 25,000 PPM
 Recovered - ft. of -

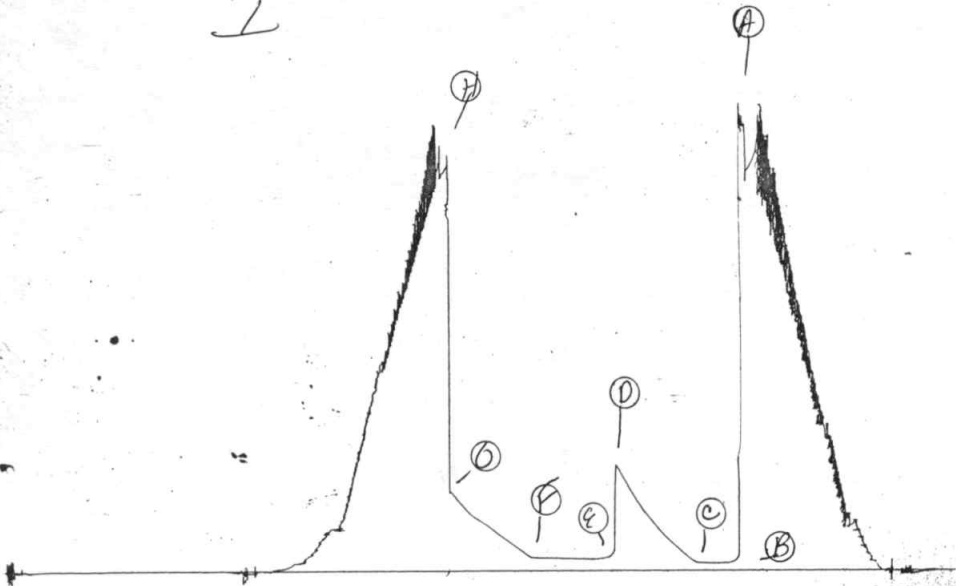
Remarks: _____

Time Set Packer(s) 5:30 ~~A.M.~~ P.M. Time Started Off Bottom 9:00 ~~A.M.~~ P.M. Maximum Temperature 123
 Initial Hydrostatic Pressure (A) 2042 P.S.I.
 Initial Flow Period Minutes 30 (B) 37 P.S.I. to (C) 39 P.S.I.
 Initial Closed In Period Minutes 60 (D) 536 P.S.I.
 Final Flow Period Minutes 60 (E) 59 P.S.I. to (F) 65 P.S.I.
 Final Closed In Period Minutes 60 (G) 394 P.S.I.
 Final Hydrostatic Pressure (H) 2021 P.S.I.

#13402
DST #2

RT # 14207

I



WESTERN TESTING CO., INC.

Pressure Data

Date 11/6/81 Test Ticket No. 14207
 Recorder No. 13402 Capacity 4025 Location 4268 Ft.
 Clock No. - Elevation - Well Temperature 123 °F

Point	Pressure			Time Given	Time Computed
		P.S.I.			
Initial Hydrostatic Mud	2042	P.S.I.	Open Tool	5:30A	M
First Initial Flow Pressure	37	P.S.I.	First Flow Pressure	30	Mins. 30 Mins.
First Final Flow Pressure	39	P.S.I.	Initial Closed-in Pressure	60	Mins. 60 Mins.
Initial Closed-in Pressure	536	P.S.I.	Second Flow Pressure	60	Mins. 60 Mins.
Second Initial Flow Pressure	59	P.S.I.	Final Closed-in Pressure	60	Mins. 60 Mins.
Second Final Flow Pressure	65	P.S.I.			
Final Closed-in Pressure	394	P.S.I.			
Final Hydrostatic Mud	2021	P.S.I.			

PRESSURE BREAKDOWN

Point In.	First Flow Pressure		Initial Shut-In		Second Flow Pressure		Final Shut-In	
	Breakdown:	Inc.	Breakdown:	Inc.	Breakdown:	Inc.	Breakdown:	Inc.
	6		20		12		20	
	of 5	mins. and a	of 3	mins. and a	of 5	mins. and a	of 3	mins. and a
	final inc. of 0	Min.	final inc. of 0	Min.	final inc. of 0	Min.	final inc. of 0	Min.
Point In.	Press.	Point Minutes	Press.	Point Minutes	Press.	Point Minutes	Press.	
1 0	37	0	39	0	59	0	65	
2 5	37	3	47	3	59	3	77	
3 10	37	6	61	6	59	6	92	
4 15	37	9	79	9	59	9	106	
5 20	37	12	96	12	59	12	121	
6 25	38	15	114	15	60	15	139	
7 30	39	18	135	18	61	18	152	
8		21	154	21	62	21	167	
9		24	173	24	63	24	183	
0		27	198	27	64	27	199	
1		30	222	30	65	30	215	
2		33	247	33	65	33	228	
3		36	272	36	65	36	242	
4		39	297	39		39	256	
5		42	331	42		42	268	
6		45	363	45		45	283	
7		48	397	48		48	305	
8		51	435	51		51	331	
9		54	469	54		54	352	
0		57	508	57		57	378	
WTC - 4		60	536	60		60	394	