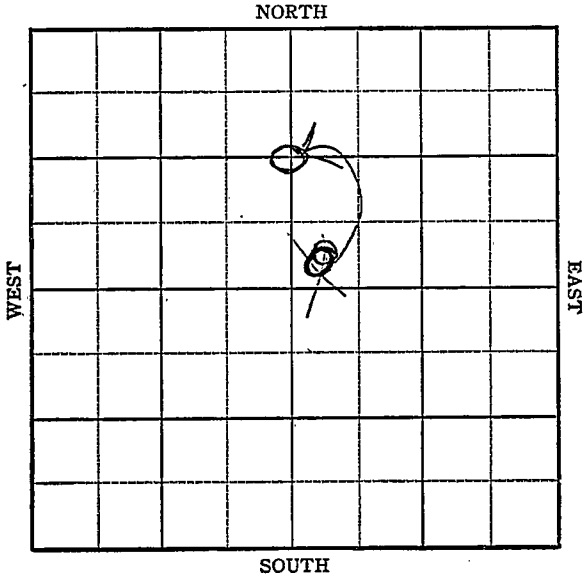


Section 12 Township 31 Range 34W

Well No. 1 Swink

Company Cities Service



Sec. 12 Twp. 31 R. 34-W ✓

Well No. #1 Swink Farm

Cities Service Company

Hugoton

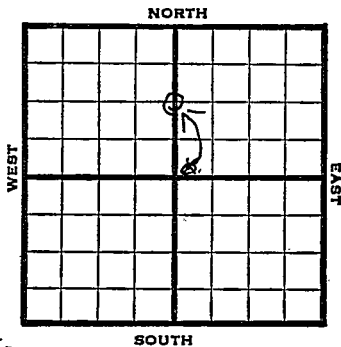
1320 Ft. from N. Line

70 Ft. from S. Line

2640 Ft. from E. Line

150 Ft. from W. Line

~~SW NE~~ 2 1/2 Sec.



1948		REPORT
	Eliv. 2942'	
8/11	8" @ 640'	
	Drlg 1500'	
8/18	Drlg 2642'	
8/26	TD 2801	
	5" @ 2800'	
9/1	"	
9/8	140 shots 2736-64 - 1500 acid	
9/14	50 shots 2578-88	
	134 " 2678-2704	
	150 " 2634-64	
	50 " 2602-12 - 20,000 acid	
9/21	"	
9/29	9000 acid	
10/6	5" @ 2800'	
	Perf.	
	Acid 36,000	
	Gas 16,600,000	
	R. Pr. 358#	
	TD 2801'	

COMPLETED

Seward County Kansas State

Map No. _____ Sec. 12 Twp. 31 R. 34W

Well No. 1 Swink

Cities Service Company

FIRST REPORT

Contractor

SW NE

SECTION PLAT

_____ Ft. from N. Line

70 Ft. from S. Line

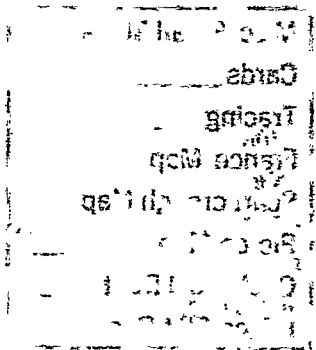
_____ Ft. from E. Line

150 Ft. from W. Line

Hugoton Pool

Remarks:

8" @ 640 drlg. 1500



Date
AUG 1 1 1948

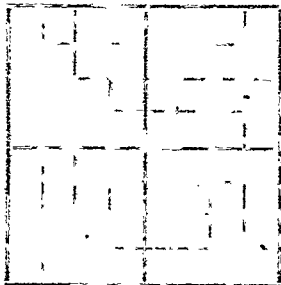
Scout **S. J. LEWIS**

1870-1871

1870-1871

1870-1871

1870-1871



1870-1871

1870-1871

1870-1871

1870-1871

1870-1871

Misc. Small Maps

Cards

Tracing

France Map

Scarborough Map

Pierce Map

Geological Dept.

Pierce Plat Book

1870-1871

1870-1871

Seward County Kansas State

Map No. _____ Sec. 12 Twp. 31 R. 34W

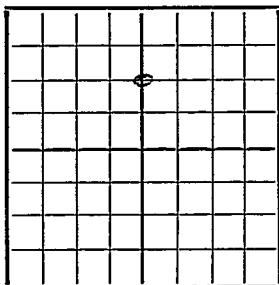
Well No. 1 Swink

Cities Service Company

CORRECTION Contractor

C $N\frac{1}{2}$ Sec.

SECTION PLAT



1320 Ft. from N. Line

_____ Ft. from S. Line

2640 Ft. from E. Line

_____ Ft. from W. Line

Hugoton Pool

Remarks:

Reported SW NE

Date

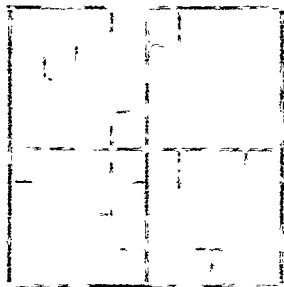
AUG 18 1948

Scout

S. J. LEWIS

Faint, illegible text at the top of the page, possibly bleed-through from the reverse side.

TO THE POINT



Faint, illegible text to the right of the grid, possibly bleed-through from the reverse side.

- Misc. Small Maps _____
- Cards Edith
- Tracing _____
- France Map ✓
- Scarborough Map ✓
- Fig. 69 Map _____
- Geological Dept. _____
- Pierce Plat Book _____

Map No. _____ Sec. 12 Twp. 31 R. 34^W

Well No. 1 Swink

Cities Service Company

COMPLETE Contractor

C N¹/₂ Sec.

E 1,2942
SECTION PLAT

1320 Ft. from N. Line

_____ Ft. from S. Line

2640 Ft. from E. Line

_____ Ft. from W. Line

Seward County

Location _____

Rig up _____

Drilling and Remarks:

5" @ 2500
Perf.
36000000 gal
16,600,000 gal
258 RB

RECORD

Cased _____ in., _____ ft.

Sand _____

Gas _____

Oil _____

Total Depth 2801

PRODUCTION

1st 24 hrs. Nat. _____

1st 24 hrs. after shot _____

Gas _____ Cu. Ft.

Dry Hole _____

Abandoned _____

Date

OCT 6 1948 19 S. J. LEWIS Scout

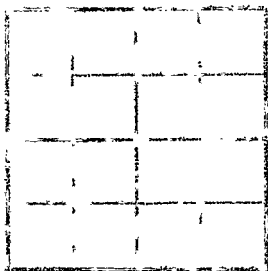
Map No. 15

Well No.

10. 10. 10.

10. 10. 10.

SECTION



10. 10. 10.

10. 10. 10.

10. 10. 10.

10. 10. 10.

RECORD

10. 10. 10.

- Misc. Small Maps
- Cards
- Tracing
- France Map
- Scarborough Map
- Pierce Map
- Geological Dept.
- Pierce Plat Book

10. 10. 10.

Date