



WESTERN TESTING CO., INC.
FORMATION TESTING

TICKET NO: 7383

P. O. BOX 1599 WICHITA, KANSAS 67201
PHONE (316) 262-5861

Elevation 1698 G.L. Formation Indian Cave Eff. Pay

District Pratt Date 9-29-84 Customer Order No.

COMPANY NAME K/30 W.L. Kirkman Inc

ADDRESS P.O. Box 18611 Wichita KS 67218

LEASE AND WELL NO Riepe #1 COUNTY Barber STATE KS Sec. 11 Twp. 36 Rge. 15W

Mail Invoice To Same No. Copies Requested Reg

Mail Charts To Same #1-11 RIEPE Address No. Copies Requested Reg

Formation Test No. 1 Interval Tested From 2794 ft. to 2814 ft. Total Depth 2814 ft.

Packer Depth 2789 ft. Size 6 3/4 in. Packer Depth ft. Size in.

Packer Depth 2794 ft. Size 6 3/4 in. Packer Depth ft. Size in.

Depth of Selective Zone Set

Top Recorder Depth (Inside) 2804 ft. Recorder Number 13402 Cap. 4015

Bottom Recorder Depth (Outside) 2807 ft. Recorder Number 1559 Cap. 4200

Below Saddle Recorder Depth ft. Recorder Number Cap.

Drilling Contractor Aldebaran #2 Drill Collar Length 540 I. D. 2.2 in.

Mud Type Chem Viscosity 32 Weight Pipe Length I. D. in.

Weight 9.0 Water Loss 60.0 cc. Drill Pipe Length 2234 I. D. 3.8 in.

Chlorides 24,000 P.P.M. Test Tool Length 20 ft. Tool Size 5 1/2 OD in.

Jars: Make Serial Number Anchor Length 20 ft. Size 5 1/2 OD in.

Did Well Flow? NO Reversed Out NO Surface Choke Size 3/4 in. Bottom Choke Size 3/4 in.

Main Hole Size 7/8 in. Tool Joint Size 4 1/2 x 1 1/2 in.

Blow: Strong thro Both Flow Periods.

Recovered 70 ft. of Gas Lt Mud

Recovered 180 ft. of Gassy Water Chlorides 46,000 ppm

Recovered ft. of

Recovered ft. of

Recovered ft. of

Chlorides P.P.M. Sample Jars used 1 Remarks:

Time On Location 3:30 AM P.M. Time Pick Up Tool 5:30 AM P.M. Time Off Location 11:30 AM P.M.

Time Set Packer(s) 6:55 AM P.M. Time Started Off Bottom 9:25 AM P.M. Maximum Temperature 106°

Initial Hydrostatic Pressure (A) 1284 P.S.I.

Initial Flow Period Minutes 30 (B) 59 P.S.I. to (C) 88 P.S.I.

Initial Closed In Period Minutes 60 (D) 1085 P.S.I.

Final Flow Period Minutes 30 (E) 118 P.S.I. to (F) 137 P.S.I.

Final Closed In Period Minutes 30 (G) 1035 P.S.I.

Final Hydrostatic Pressure (H) 1284 P.S.I.

COMPANY TERMS

Western Testing Co., Inc. shall not be liable for damages of any kind to the property or personnel of the one for whom a test is made or for any loss suffered or sustained directly or indirectly through the use of its equipment, of its statements or opinion concerning the results of any test. Tools lost or damaged in the hole shall be paid at cost by the party for whom the test is made.

All charges subject to 12% interest after 60 days from date of invoice. Any expense incurred for collection will be added to the original amount.

Test Approved By [Signature] Signature of Customer or his authorized representative

Western Representative [Signature] 10/25

Thank you

FIELD INVOICE

Table with 2 columns: Item Name and Amount. Items include Open Hole Test, Misrun, Straddle Test, Jars, Selective Zone, Safety Joint, Standby, Evaluation, Extra Packer, Circ. Sub., Mileage, Fluid Sampler, Extra Charts, Insurance, Telecopier, and TOTAL.

WESTERN TESTING CO., INC.

Pressure Data

Date: 9-29-84 Test Ticket No. 7383
 Recorder No. 13400 Capacity _____ Location _____
 Clock No. _____ Elevation _____ Well Temperature _____

Point	Pressure	Open Tool	Time Given	Time Computed
A Initial Hydrostatic Mud	<u>1275</u> P.S.I.			M
B First Initial Flow Pressure	<u>54</u> P.S.I.	First Flow Pressure	<u>30</u> Mins.	
C First Final Flow Pressure	<u>82</u> P.S.I.	Initial Closed-in Pressure	<u>60</u> Mins.	
D Initial Closed-in Pressure	<u>1077</u> P.S.I.	Second Flow Pressure	<u>30</u> Mins.	
E Second Initial Flow Pressure	<u>104</u> P.S.I.	Final Closed-in Pressure	<u>30</u> Mins.	
F Second Final Flow Pressure	<u>135</u> P.S.I.			
G Final Closed-in Pressure	<u>1030</u> P.S.I.			
H Final Hydrostatic Mud	<u>1237</u> P.S.I.			

PRESSURE BREAKDOWN

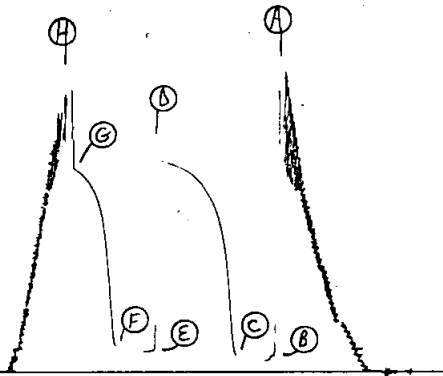
<p>First Flow Pressure Breakdown: <u>7</u> Inc. of <u>5</u> mins. and a final inc. of <u>0</u> Min.</p>	<p>Initial Shut-In Breakdown: <u>20</u> Inc. of <u>3</u> mins. and a final inc. of <u>0</u> Min.</p>	<p>Second Flow Pressure Breakdown: <u>7</u> Inc. of <u>5</u> mins. and a final inc. of <u>0</u> Min.</p>	<p>Final Shut-In Breakdown: <u>11</u> Inc. of <u>3</u> mins. and a final inc. of <u>0</u> Min.</p>
---	--	--	--

Point Mins.	Press.	Point Minutes	Press.	Point Minutes	Press.	Point Minutes	Press.
P 1 0	<u>54</u>	0	<u>82</u>	0	<u>106</u>	0	<u>135</u>
P 2 5	<u>54</u>	3	<u>333</u>	5	<u>106</u>	3	<u>387</u>
P 3 10	<u>54</u>	6	<u>562</u>	10	<u>109</u>	6	<u>610</u>
P 4 15	<u>62</u>	9	<u>694</u>	15	<u>118</u>	9	<u>768</u>
P 5 20	<u>68</u>	12	<u>779</u>	20	<u>126</u>	12	<u>852</u>
P 6 25	<u>74</u>	15	<u>838</u>	25	<u>132</u>	15	<u>909</u>
P 7 30	<u>82</u>	18	<u>883</u>	30	<u>135</u>	18	<u>949</u>
P 8 35		21	<u>917</u>	35		21	<u>978</u>
P 9 40		24	<u>950</u>	40		24	<u>1002</u>
P10 45		27	<u>973</u>	45		27	<u>1020</u>
P11 50		30	<u>995</u>	50		30	<u>1030</u>
P12 55		33	<u>1012</u>	55		33	
P13 60		36	<u>1024</u>	60		36	
P14		39	<u>1036</u>	65		39	
P15		42	<u>1046</u>	70		42	
P16		45	<u>1054</u>	75		45	
P17		48	<u>1062</u>	80		48	
P18		51	<u>1068</u>	85		51	
P19		54	<u>1074</u>	90		54	
P20		57	<u>1077</u>			57	
		60				60	

13402
DST #1

TKT. # 7383

I



1559
DST #1

TKT. # 7383

0



WESTERN TESTING COMPANY INC.
SUBSURFACE PRESSURE SURVEY

DATE: 9/29/84
CUSTOMER: W.L. KIRKMAN INC.
WELL: #1-11 TEST: 1
ELEVATION (KB): 1703
SECTION: 11
RANGE: 15W COUNTY: BARBER STATE: KANSAS
GAUGE SN #13402 RANGE: 4025 CLOCK: 12

TICKET #7383
LEASE: RIEPE
GEOLOGIST: MORRE
FORMATION: INDIAN CAVE
TOWNSHIP: 31S

INTERVAL TEST FROM: 2794 FT TO: 2814 FT TOTAL DEPTH: 2814 FT
DEPTH OF SELECTIVE ZONE: FT
PACKER DEPTH: 2789 FT SIZE: 6 3/4 IN PACKER DEPTH: 2794 FT SIZE: 6 3/4 IN
PACKER DEPTH: FT SIZE: IN PACKER DEPTH: FT SIZE: IN

DRILLING CONTRACTOR: ALDEBARAN
MUD TYPE: CHEM VISCOSITY: 32
WEIGHT: 9.0 WATER LOSS (CC): 60.0
CHLORIDES (P.P.M.): 24000
JARS - MAKE: SERIAL NUMBER:
DID WELL FLOW? REVERSED OUT?
DRILL COLLAR LENGTH: 540 FT I.D.: 2.25 IN
WEIGHT PIPE LENGTH: FT I.D.: IN
DRILL PIPE LENGTH: 2234 FT I.D.: 3.8 IN
TEST TOOL LENGTH: 20 FT TOOL SIZE: 5 1/2 O.D. IN
ANCHOR LENGTH: 20 FT SIZE: 5 1/2 O.D. IN
SURFACE CHOKE SIZE: 3/4 IN BOTTOM CHOKE SIZE: 3/4 IN
MAIN HOLE SIZE: 7 7/8 IN TOOL JOINT SIZE: 4 1/2 XH IN

BLOW: STRONG BLOWS THROUGHOUT BOTH FLOW PERIODS.

RECOVERED: 70 FT OF: GAS CUT MUD.
RECOVERED: 180 FT OF: GASSY WATER; CHLORIDES 46000 P.P.M.
RECOVERED: FT OF:
RECOVERED: FT OF:
RECOVERED: FT OF:
RECOVERED: FT OF:
RECOVERED: FT OF:
RECOVERED: FT OF:
RECOVERED: FT OF:
RECOVERED: FT OF:

REMARKS:

TIME SET PACKER(S): 6:55 P.M. TIME STARTED OFF BOTTOM: 9:25 P.M.
WELL TEMPERATURE: 106 °F
INITIAL HYDROSTATIC PRESSURE: (A) 1275 PSI
INITIAL FLOW PERIOD MIN: 30 (B) 56 PSI TO (C) 82 PSI
INITIAL CLOSED IN PERIOD MIN: 57 (D) 1077 PSI
FINAL FLOW PERIOD MIN: 30 (E) 106 PSI TO (F) 135 PSI
FINAL CLOSED IN PERIOD MIN: 30 (G) 1030 PSI
FINAL HYDROSTATIC PRESSURE (H) 1237 PSI



WESTERN TESTING CO., INC.
FORMATION TESTING

TICKET NO 7384

OK

P. O. BOX 1599 WICHITA, KANSAS 67201
PHONE (316) 262-5861

Elevation 1648 GL. Formation Emporia Eff. Pay Fr.

District P-9TH Date 9-30-84 Customer Order No.
COMPANY NAME W.L. Kirkman Inc.

ADDRESS P.O. Box 18611 Wichita KS 67218

LEASE AND WELL NO. Riepe #1 COUNTY Barber STATE KS Sec. 11 Twp. 31s Rge. 15w

Mail Invoice To Same #1-11 Riepe No. Copies Requested Reg

Mail Charts To Same Address No. Copies Requested Reg 8

Formation Test No. 2 Interval Tested From 3064 ft. to 3091 ft. Total Depth 3091 ft.

Packer Depth 3059 ft. Size 6 3/4 in. Packer Depth ft. Size in.

Packer Depth 3064 ft. Size 6 3/4 in. Packer Depth ft. Size in.

Depth of Selective Zone Set

Top Recorder Depth (Inside) 3081 ft. Recorder Number 13402 Cap. 4025

Bottom Recorder Depth (Outside) 3084 ft. Recorder Number 1559 Cap. 4200

Below Saddle Recorder Depth ft. Recorder Number Cap.

Drilling Contractor Aldebaran #2 Drill Collar Length 570 I. D. 2.2 in.

Mud Type Chem Viscosity 35 Weight Pipe Length I. D. in.

Weight 91 Water Loss 52.0 cc. Drill Pipe Length 2504 I. D. 3.8 in.

Chlorides 24,000 P.P.M. Test Tool Length 20 ft. Tool Size 5/8 CD in.

Jars: Make - Serial Number - Anchor Length 27 ft. Size 5/8 CD in.

Did Well Flow? NO Reversed Out Yes Surface Choke Size 3/4 in. Bottom Choke Size 3/4 in.

Main Hole Size 7/8 in. Tool Joint Size 4 1/2 PH in.

Blow: Strong thru Both Flow Periods

Recovered 1230 ft. of Gassy Water - Few Oil Specks Chlorides 87,000 approx

Recovered ft. of Chlorides 87,000 approx

Recovered ft. of

Recovered ft. of

Recovered ft. of

Chlorides P.P.M. Sample Jars used 4 Remarks:

Time On Location 12:30 A.M. Time Pick Up Tool 1:30 P.M. Time Off Location 9:00 A.M.

Time Set Packer(s) 2:55 P.M. Time Started Off Bottom 5:55 P.M. Maximum Temperature 106°

Initial Hydrostatic Pressure (A) 1484 P.S.I.

Initial Flow Period Minutes 30 (B) 364 P.S.I. to (C) 561 P.S.I.

Initial Closed In Period Minutes 60 (D) 1165 P.S.I.

Final Flow Period Minutes 30 (E) 709 P.S.I. to (F) 758 P.S.I.

Final Closed In Period Minutes 60 (G) 1155 P.S.I.

Final Hydrostatic Pressure (H) 1484 P.S.I.

COMPANY TERMS

Western Testing Co., Inc. shall not be liable for damages of any kind to the property or personnel of the one for whom a test is made or for any loss suffered or sustained directly or indirectly through the use of its equipment, of its statements or opinion concerning the results of any test. Tools lost or damaged in the hole shall be paid at cost by the party for whom the test is made.

All charges subject to 12% interest after 60 days from date of invoice. Any expense incurred for collection will be added to the original amount.

Test Approved By [Signature] Signature of Customer or his authorized representative

Western Representative [Signature]

Thank you 1625

FIELD INVOICE

Table with 2 columns: Item and Amount. Items include Open Hole Test, Misrun, Straddle Test, Jars, Selective Zone, Safety Joint, Standby, Evaluation, Extra Packer, Circ. Sub., Mileage, Fluid Sampler, Extra Charts (3), Insurance, Telecopier, and TOTAL.

WESTERN TESTING CO., INC.

Pressure Data

Date: 9-30

Test Ticker No. 7384

Recorder No. 13402 Capacity _____ Location _____

Clock No. _____ Elevation _____ Well Temperature _____

Point	Pressure	Open Tool	Time Given	Time Computed
A Initial Hydrostatic Mud	<u>1474</u> P.S.I.			
B First Initial Flow Pressure	<u>351</u> P.S.I.	First Flow Pressure	<u>30</u> Mins.	<u>30</u> Min.
C First Final Flow Pressure	<u>563</u> P.S.I.	Initial Closed-in Pressure	<u>60</u> Mins.	<u>60</u> Min.
D Initial Closed-in Pressure	<u>1166</u> P.S.I.	Second Flow Pressure	<u>30</u> Mins.	<u>30</u> Min.
E Second Initial Flow Pressure	<u>702</u> P.S.I.	Final Closed-in Pressure	<u>60</u> Mins.	<u>60</u> Min.
F Second Final Flow Pressure	<u>763</u> P.S.I.	<i>Plugging in both flows.</i>		
G Final Closed-in Pressure	<u>1149</u> P.S.I.			
H Final Hydrostatic Mud	<u>1428</u> P.S.I.			

PRESSURE BREAKDOWN

First Flow Pressure
Breakdown: 7 Inc.
of 5 mins. and a
final inc. of 0 Min.

Initial Shut-In
Breakdown: 21 Inc.
of 3 mins. and a
final inc. of 0 Min.

Second Flow Pressure
Breakdown: 7 Inc.
of 5 mins. and a
final inc. of 0 Min.

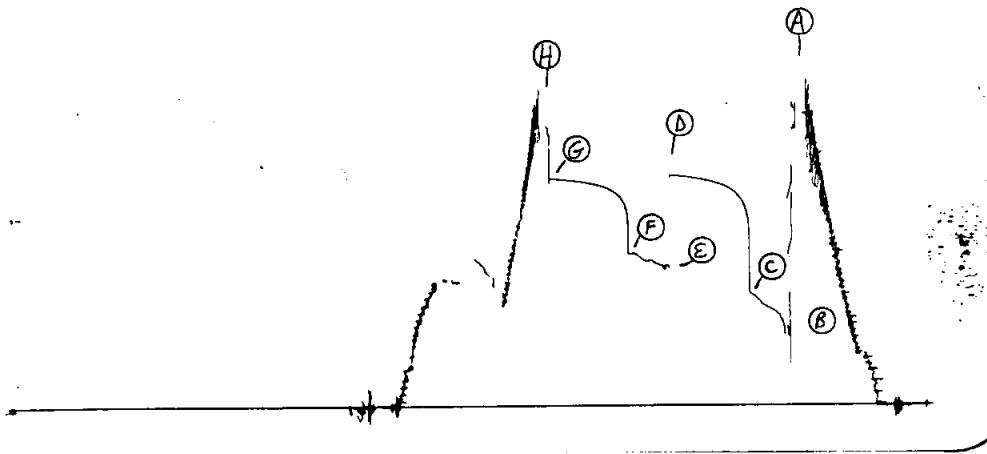
Final Shut-In
Breakdown: 21 Inc.
of 3 mins. and a
final inc. of 0 Min.

Point Mins.	Press.	Point Minutes	Press.	Point Minutes	Press.	Point Minutes	Press.
P 1 0	<u>351</u>	0	<u>563</u>	0	<u>702</u>	0	<u>763</u>
P 2 5	<u>351</u>	3	<u>991</u>	5	<u>705</u>	3	<u>1018</u>
P 3 10	<u>467</u>	6	<u>1039</u>	10	<u>715</u>	6	<u>1057</u>
P 4 15	<u>487</u>	9	<u>1066</u>	15	<u>730</u>	9	<u>1072</u>
P 5 20	<u>504</u>	12	<u>1086</u>	20	<u>740</u>	12	<u>1087</u>
P 6 25	<u>538</u>	15	<u>1100</u>	25	<u>763</u>	15	<u>1100</u>
P 7 30	<u>563</u>	18	<u>1111</u>	30	<u>763</u>	18	<u>1107</u>
P 8 35		21	<u>1119</u>	35		21	<u>1114</u>
P 9 40		24	<u>1126</u>	40		24	<u>1118</u>
P10 45		27	<u>1131</u>	45		27	<u>1122</u>
P11 50		30	<u>1136</u>	50		30	<u>1126</u>
P12 55		33	<u>1141</u>	55		33	<u>1129</u>
P13 60		36	<u>1145</u>	60		36	<u>1132</u>
P14		39	<u>1149</u>	65		39	<u>1135</u>
P15		42	<u>1153</u>	70		42	<u>1138</u>
P16		45	<u>1157</u>	75		45	<u>1140</u>
P17		48	<u>1159</u>	80		48	<u>1142</u>
P18		51	<u>1161</u>	85		51	<u>1144</u>
P19		54	<u>1163</u>	90		54	<u>1146</u>
P20		57	<u>1165</u>			57	<u>1148</u>
		60	<u>1166</u>			60	<u>1149</u>

13402
DST #2

TKT # 7384

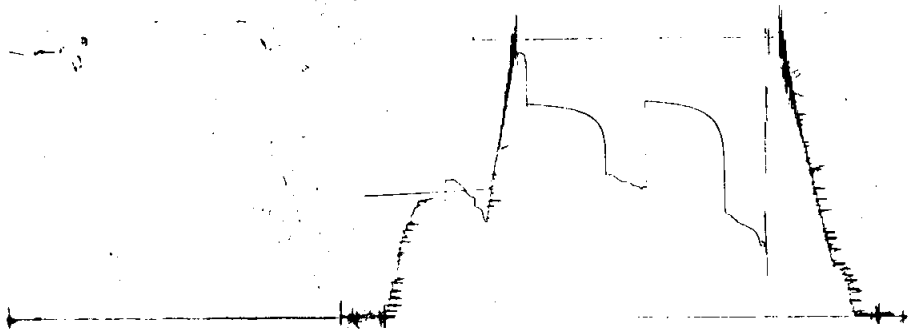
I



1001
DST #2

TKT # 7384

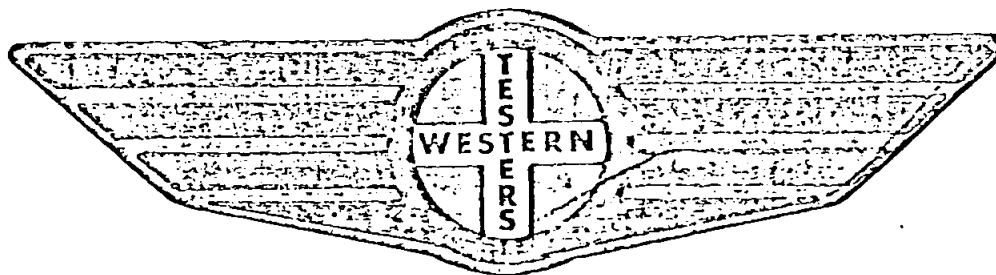
0



FORMATION

TEST

REPORT



Home Office:

Wichita, Kansas 67201

P.O. Box 1599

Phone (316) 262-5861

WESTERN TESTING CO. INC.
SUBSURFACE PRESSURE SURVEY

DATE: 9/30/84 TICKET #7384
 CUSTOMER: W.L. KIRKMAN INC. LEASE: RIEPE
 WELL: 1-11 TEST: 2 GEOLOGIST: LOUIS ?
 ELEVATION (KB): 1703 FORMATION: EMPORIA
 SECTION: 11 TOWNSHIP: 31S
 RANGE: 15W COUNTY: BARBER STATE: KANSAS
 GAUGE SN #13402 RANGE: 4025 CLOCK: 12

INTERVAL TEST FROM: 3064 FT TO: 3091 FT TOTAL DEPTH: 3091 FT
 DEPTH OF SELECTIVE ZONE: FT
 PACKER DEPTH: 3059 FT SIZE: 6 3/4 IN PACKER DEPTH: 3064 FT SIZE: 6 3/4 IN
 PACKER DEPTH: FT SIZE: IN PACKER DEPTH: FT SIZE: IN

DRILLING CONTRACTOR: ALDEBARAN DRLG
 MUD TYPE: CHEMICAL VISCOSITY: 35
 WEIGHT: 9.1 WATER LOSS (CC): 52.0
 CHLORIDES (P.P.M.): 24000
 JARS - MAKE: SERIAL NUMBER:
 DID WELL FLOW? NO REVERSED OUT? YES
 DRILL COLLAR LENGTH: 540 FT I.D.: 2.2 IN
 WEIGHT PIPE LENGTH: FT I.D.: IN
 DRILL PIPE LENGTH: 2504 FT I.D.: 3.8 IN
 TEST TOOL LENGTH: 20 FT TOOL SIZE: 5 1/2 OD IN
 ANCHOR LENGTH: 27 FT SIZE: 5 1/2 OD IN
 SURFACE CHOKE SIZE: 3/4 IN BOTTOM CHOKE SIZE: 3/4 IN
 MAIN HOLE SIZE: 7 7/8 IN TOOL JOINT SIZE: 4 1/2 XH IN

BLOW: STRONG BLOW THROUGHOUT TEST.

RECOVERED: 1230 FT OF: GASSY WATER WITH A FEW OIL SPECKS.
 RECOVERED: FT OF: CHLORIDES 87000 PPM.
 RECOVERED: FT OF:
 RECOVERED: FT OF:
 RECOVERED: FT OF:
 RECOVERED: FT OF:
 RECOVERED: FT OF:
 RECOVERED: FT OF:
 RECOVERED: FT OF:
 RECOVERED: FT OF:

REMARKS: PLUGGING ACTION IN BOTH FLOW PERIODS.

TIME SET PACKER(S): 2:55 PM TIME STARTED OFF BOTTOM: 5:55 PM
 WELL TEMPERATURE: 106 °F
 INITIAL HYDROSTATIC PRESSURE: (A) 1474 PSI
 INITIAL FLOW PERIOD MIN: 30 (B) 351 PSI TO (C) 563 PSI
 INITIAL CLOSED IN PERIOD MIN: 60 (D) 1166 PSI
 FINAL FLOW PERIOD MIN: 30 (E) 702 PSI TO (F) 763 PSI
 FINAL CLOSED IN PERIOD MIN: 60 (G) 1149 PSI
 FINAL HYDROSTATIC PRESSURE (H) 1428 PSI



WESTERN TESTING CO., INC.
FORMATION TESTING

TICKET No 7385

P. O. BOX 1599 WICHITA, KANSAS 67201
PHONE (316) 262-5861

Elevation 11698 G.L. Formation Douglas Eff. Pay Ft.

District Pratt Date 10-2-84 Customer Order No.

COMPANY NAME W. L. Kirkman Inc.

ADDRESS P.O. Box 18611 Wichita KS 67218

LEASE AND WELL NO. Riepe #1 COUNTY Barber STATE KS Sec. 11 Twp. 31s Rge. 15w

Mail Invoice To Same #1-11 Riepe No. Copies Requested Reg

Co. Name Address No. Copies Requested Reg

Mail Charts To Same Address No. Copies Requested Reg

Formation Test No. 3 Interval Tested From 3821 ft. to 3852 ft. Total Depth 3852 ft.

Packer Depth 3816 ft. Size 6 3/4 in. Packer Depth ft. Size in.

Packer Depth 3821 ft. Size 6 3/4 in. Packer Depth ft. Size in.

Depth of Selective Zone Set

Top Recorder Depth (Inside) 3842 ft. Recorder Number 13402 Cap. 4025

Bottom Recorder Depth (Outside) 3845 ft. Recorder Number 1559 Cap. 4200

Below Saddle Recorder Depth ft. Recorder Number Cap.

Drilling Contractor Aldebaran #2 Drill Collar Length 540 I. D. 2.2 in.

Mud Type Chem Viscosity 43 Weight Pipe Length I. D. in.

Weight 9.0 Water Loss 10.4 cc. Drill Pipe Length 3261 I. D. 3.8 in.

Chlorides 15,500 P.P.M. Test Tool Length 20 ft. Tool Size 5/16 OD in.

Jars: Make Serial Number Anchor Length 31 ft. Size 5/16 OD in.

Did Well Flow? NO Reversed Out NO Surface Choke Size 3/4 in. Bottom Choke Size 3/4 in.

Main Hole Size 7 7/8 in. Tool Joint Size 4 1/2 x 14 in.

Blow: Fair Building to Strong on Both Flow Periods.

Recovered 180 ft. of Gass in Pipe

Recovered 60 ft. of Heavy Oil Cut Gassy Mud 55% M 15% W 20% O 10% G

Recovered 60 ft. of Slightly Oil Cut Muddy Water 40% M 45% W 10% O 5% G

Recovered 420 ft. of Gassy Water Chlorides 119,000 ppm

Recovered ft. of

Chlorides P.P.M. Sample Jars used Remarks:

Time On Location 9:30 A.M. P.M. Time Pick Up Tool 10:30 A.M. P.M. Time Off Location 6:00 A.M. P.M.

Time Set Packer(s) 12:05 A.M. P.M. Time Started Off Bottom 3:05 A.M. P.M. Maximum Temperature 114°

Initial Hydrostatic Pressure (A) 1870 P.S.I.

Initial Flow Period Minutes 30 (B) 78 P.S.I. to (C) 196 P.S.I.

Initial Closed In Period Minutes 60 (D) 1464 P.S.I.

Final Flow Period Minutes 30 (E) 265 P.S.I. to (F) 314 P.S.I.

Final Closed In Period Minutes 60 (G) 1464 P.S.I.

Final Hydrostatic Pressure (H) 1870 P.S.I.

COMPANY TERMS

Western Testing Co., Inc. shall not be liable for damages of any kind to the property or personnel of the one for whom a test is made or for any loss suffered or sustained directly or indirectly through the use of its equipment, of its statements or opinion concerning the results of any test. Tools lost or damaged in the hole shall be paid at cost by the party for whom the test is made.

All charges subject to 12% interest after 60 days from date of invoice. Any expense incurred for collection will be added to the original amount.

Test Approved By [Signature] Signature of Customer or his authorized representative

Western Representative [Signature] 1625

FIELD INVOICE

Table with 2 columns: Item, Amount. Includes Open Hole Test (\$580.00), Misrun, Straddle Test, Jars, Selective Zone, Safety Joint, Standby, Evaluation, Extra Packer, Circ. Sub., Mileage, Fluid Sampler, Extra Charts, Insurance, Telecopier, TOTAL.

WESTERN TESTING CO., INC.
Pressure Data

Date 10-2 Test Ticket No. 7385
 Recorder No. 13402
 Clock No. --- Capacity _____ Location _____ Elevation _____ Well Temperature _____

Point	Pressure	P.S.I.	Open Tool	Time Given	Time Computed
A Initial Hydrostatic Mud	<u>1865</u>				
B First Initial Flow Pressure	<u>82</u>	P.S.I.	First Flow Pressure	<u>30</u> Mins.	<u>30</u> Mins.
C First Final Flow Pressure	<u>186</u>	P.S.I.	Initial Closed-in Pressure	<u>60</u> Mins.	<u>60</u> Mins.
D Initial Closed-in Pressure	<u>1465</u>	P.S.I.	Second Flow Pressure	<u>30</u> Mins.	<u>30</u> Mins.
E Second Initial Flow Pressure	<u>254</u>	P.S.I.	Final Closed-in Pressure	<u>60</u> Mins.	<u>60</u> Mins.
F Second Final Flow Pressure	<u>307</u>	P.S.I.			
G Final Closed-in Pressure	<u>1453</u>	P.S.I.			
H Final Hydrostatic Mud	<u>1846</u>	P.S.I.			

PRESSURE BREAKDOWN

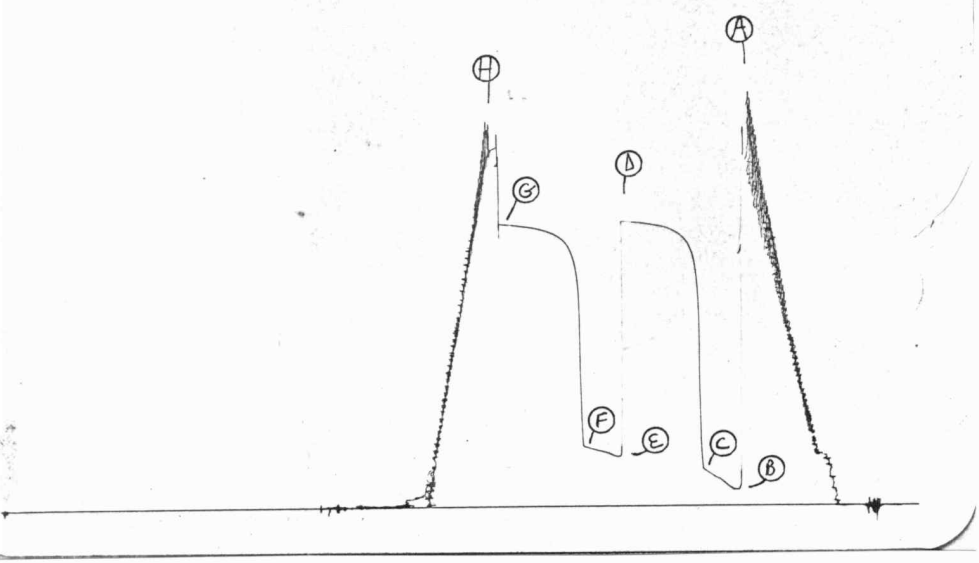
First Flow Pressure Breakdown: <u>7</u> Inc. of <u>5</u> mins. and a final inc. of <u>0</u> Min.	Initial Shut-In Breakdown: <u>21</u> Inc. of <u>3</u> mins. and a final inc. of <u>0</u> Min.	Second Flow Pressure Breakdown: <u>7</u> Inc. of <u>5</u> mins. and a final inc. of <u>0</u> Min.	Final Shut-In Breakdown: <u>21</u> Inc. of <u>3</u> mins. and a final inc. of <u>0</u> Min.
--	---	---	---

Point Mins.	Press.	Point Minutes	Press.	Point Minutes	Press.	Point Minutes	Press.
P 1 0	<u>82</u>	0	<u>186</u>	0	<u>254</u>	0	<u>307</u>
P 2 5	<u>84</u>	3	<u>1150</u>	5	<u>258</u>	3	<u>1171</u>
P 3 10	<u>102</u>	6	<u>1292</u>	10	<u>274</u>	6	<u>1273</u>
P 4 15	<u>132</u>	9	<u>1344</u>	15	<u>283</u>	9	<u>1327</u>
P 5 20	<u>150</u>	12	<u>1372</u>	20	<u>292</u>	12	<u>1359</u>
P 6 25	<u>173</u>	15	<u>1393</u>	25	<u>301</u>	15	<u>1379</u>
P 7 30	<u>186</u>	18	<u>1409</u>	30	<u>307</u>	18	<u>1392</u>
P 8 35		21	<u>1420</u>	35		21	<u>1405</u>
P 9 40		24	<u>1429</u>	40		24	<u>1412</u>
P10 45		27	<u>1435</u>	45		27	<u>1419</u>
P11 50		30	<u>1441</u>	50		30	<u>1425</u>
P12 55		33	<u>1445</u>	55		33	<u>1429</u>
P13 60		36	<u>1448</u>	60		36	<u>1433</u>
P14		39	<u>1451</u>	65		39	<u>1437</u>
P15		42	<u>1454</u>	70		42	<u>1440</u>
P16		45	<u>1457</u>	75		45	<u>1443</u>
P17		48	<u>1459</u>	80		48	<u>1445</u>
P18		51	<u>1461</u>	85		51	<u>1447</u>
P19		54	<u>1463</u>	90		54	<u>1449</u>
P20		57	<u>1464</u>			57	<u>1451</u>
		60	<u>1465</u>			60	<u>1453</u>

15402
DST #3

TKT # 7385

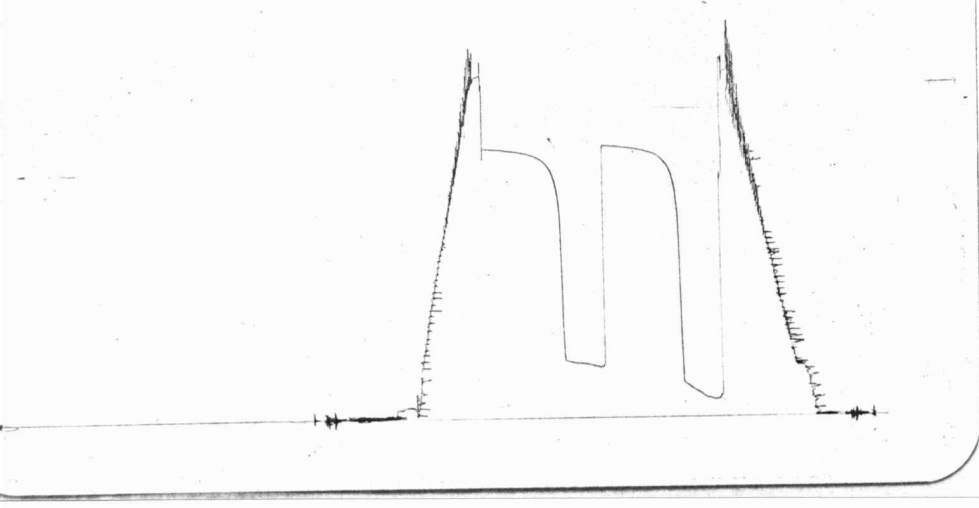
I



1559
DST #3

TKT # 7385

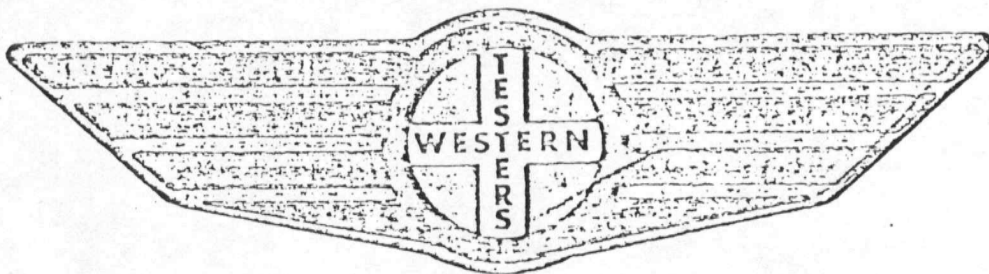
O



FORMATION

TEST

REPORT



Home Office:

Wichita, Kansas 67201

P.O. Box 1599

Phone (316) 262-5861

WESTERN TESTING COMPANY INC.
SUBSURFACE PRESSURE SURVEY

DATE: 10/2/84 TICKET #7385
 CUSTOMER: W.L. KIRKMAN INC. LEASE: RIEPE
 WELL: 1-11 TEST: 3 GEOLOGIST: LOUIS
 ELEVATION (KB): 1703 FORMATION: DOUGLAS
 SECTION: 11 TOWNSHIP: 31S
 RANGE: 15W COUNTY: BARBER STATE: KANSAS
 GAUGE SN #13402 RANGE: 4025 CLOCK: 12

INTERVAL TEST FROM: 3821 FT TO: 3852 FT TOTAL DEPTH: 3852 FT
 DEPTH OF SELECTIVE ZONE: FT
 PACKER DEPTH: 3816 FT SIZE: 6 3/4 IN PACKER DEPTH: 3821 FT SIZE: 6 3/4 IN
 PACKER DEPTH: FT SIZE: IN PACKER DEPTH: FT SIZE: IN

DRILLING CONTRACTOR: ALDERBARAN
 MUD TYPE: CHEMICAL VISCOSITY: 43
 WEIGHT: 9.0 WATER LOSS (CC): 10.4
 CHLORIDES (P.P.M.): 15500
 JARS - MAKE: SERIAL NUMBER:
 DID WELL FLOW? NO REVERSED OUT? NO
 DRILL COLLAR LENGTH: 540 FT I.D.: 2.25 IN
 WEIGHT PIPE LENGTH: FT I.D.: IN
 DRILL PIPE LENGTH: 3261 FT I.D.: 3.8 IN
 TEST TOOL LENGTH: 20 FT TOOL SIZE: 5 1/2 OD IN
 ANCHOR LENGTH: 31 FT SIZE: 5 1/2 OD IN
 SURFACE CHOKE SIZE: 3/4 IN BOTTOM CHOKE SIZE: 3/4 IN
 MAIN HOLE SIZE: 7 7/8 IN TOOL JOINT SIZE: 4 1/2 XH IN

BLOW: FAIR BUILDING TO STRONG ON BOTH FLOW PERIODS.

RECOVERED: 180 FT OF: GAS ABOVE FLUID
 RECOVERED: 60 FT OF: HEAVY OIL CUT GASSY MUD; 55% MUD; 15% WATER;
 RECOVERED: FT OF: 20% OIL; 10% GAS
 RECOVERED: 60 FT OF: SLIGHTLY OIL CUT MUDDY WATER; 40% MUD; 45% WATE
 R
 RECOVERED: FT OF: 10% OIL; 5% GAS
 RECOVERED: 420 FT OF: GASSY WATER
 RECOVERED: FT OF: CHLORIDES 119000 PPM
 RECOVERED: FT OF:
 RECOVERED: FT OF:

REMARKS:

TIME SET PACKER(S): 12:05 P.M. TIME STARTED OFF BOTTOM: 3:05 P.M.
 WELL TEMPERATURE: 114 °F
 INITIAL HYDROSTATIC PRESSURE: (A) 1865 PSI
 INITIAL FLOW PERIOD MIN: 30 (B) 82 PSI TO (C) 186 PSI
 INITIAL CLOSED IN PERIOD MIN: 60 (D) 1465 PSI
 FINAL FLOW PERIOD MIN: 30 (E) 254 PSI TO (F) 307 PSI
 FINAL CLOSED IN PERIOD MIN: 60 (G) 1453 PSI
 FINAL HYDROSTATIC PRESSURE (H) 1846 PSI



WESTERN TESTING CO., INC.
FORMATION TESTING

TICKET N° 7386

OK

P. O. BOX 1599 WICHITA, KANSAS 67201

Elevation 1698 G1 Formation Heaths Eff. Pay Ft.

District Pratt Date 10-3-84 Customer Order No.

COMPANY NAME W.L. Kirkinson Inc.

ADDRESS P.O. Box 16611 Wichita KS 67218

LEASE AND WELL NO Riepe #1 COUNTY Barber STATE KS Sec 11 Twp 31s Rge 15W

Mail Invoice To Same #1-11 RIEPE No. Copies Requested Reg

Mail Charts To Same Address No. Copies Requested Reg

Formation Test No. 4 Interval Tested From 4260 ft. to 4308 ft. Total Depth 4308 ft.

Packer Depth 4255 ft. Size 6 3/4 in. Packer Depth ft. Size in.

Packer Depth 4260 ft. Size 6 3/4 in. Packer Depth ft. Size in.

Depth of Selective Zone Set

Top Recorder Depth (Inside) 4263 ft. Recorder Number 13402 Cap. 4025

Bottom Recorder Depth (Outside) 4266 ft. Recorder Number 1559 Cap. 4200

Below Saddle Recorder Depth ft. Recorder Number Cap.

Drilling Contractor Aldebaran #2 Drill Collar Length 540 I. D. 2.2 in.

Mud Type Chem Viscosity 43 Weight Pipe Length I. D. in.

Weight 9.3 Water Loss 12.0 cc. Drill Pipe Length 3700 I. D. 3.8 in.

Chlorides 15,500 P.P.M. Test Tool Length 20 ft. Tool Size 5 1/2 OD in.

Jars: Make - Serial Number - Anchor Length 48 ft. Size 5 1/2 OD in.

Did Well Flow? NO Reversed Out NO Surface Choke Size 3/4 in. Bottom Choke Size 3/4 in.

Main Hole Size 2 7/8 in. Tool Joint Size 1 1/2 x 11 in.

Blow: Very Weak - Died in 25 min I.F. - Flushed tool - NO Help

Recovered 20 ft. of Mud

Recovered ft. of

Recovered ft. of

Recovered ft. of

Recovered ft. of

Chlorides P.P.M. Sample Jars used Remarks:

Time On Location 4:00 AM/PM Time Pick Up Tool 5:30 AM/PM Time Off Location 11:00 AM/PM

Time Set Packer(s) 7:10 AM/PM Time Started Off Bottom 9:10 AM/PM Maximum Temperature 116°

Initial Hydrostatic Pressure (A) 2087 P.S.I.

Initial Flow Period Minutes 30 (B) 39 P.S.I. to (C) 39 P.S.I.

Initial Closed In Period Minutes 30 (D) 49 P.S.I.

Final Flow Period Minutes 30 (E) 39 P.S.I. to (F) 49 P.S.I.

Final Closed In Period Minutes 30 (G) 49 P.S.I.

Final Hydrostatic Pressure (H) 2087 P.S.I.

COMPANY TERMS

Western Testing Co., Inc. shall not be liable for damages of any kind to the property or personnel of the one for whom a test is made or for any loss suffered or sustained directly or indirectly through the use of its equipment, of its statements or opinion concerning the results of any test. Tools lost or damaged in the hole shall be paid at cost by the party for whom the test is made.

All charges subject to 12% interest after 60 days from date of invoice. Any expense incurred for collection will be added to the original amount.

Test Approved By [Signature] Signature of Customer or his authorized representative

Western Representative [Signature] 1625

Thank you

FIELD INVOICE

Table with 2 columns: Item Name and Price. Items include Open Hole Test, Misrun, Straddle Test, Jars, Selective Zone, Safety Joint, Standby, Evaluation, Extra Packer, Circ. Sub., Mileage, Fluid Sampler, Extra Charts, Insurance, Telecopier, and TOTAL.

WESTERN TESTING CO., INC.

Pressure Data

10-3-84

7384

Date: _____ Recorder No. 13402 Capacity _____ Location _____ Ft
 Clock No. _____ Elevation _____ Well Temperature _____ °F

Point	Pressure	P.S.I.	Open Tool	M	Time Given	Time Computed
A Initial Hydrostatic Mud	<u>2085</u>	P.S.I.				
B First Initial Flow Pressure	<u>31</u>	P.S.I.	First Flow Pressure		_____ Mins.	_____ Mins.
C First Final Flow Pressure	<u>31</u>	P.S.I.	Initial Closed-in Pressure		_____ Mins.	_____ Mins.
D Initial Closed-in Pressure	<u>41</u>	P.S.I.	Second Flow Pressure		_____ Mins.	_____ Mins.
E Second Initial Flow Pressure	<u>34</u>	P.S.I.	Final Closed-in Pressure		_____ Mins.	_____ Mins.
F Second Final Flow Pressure	<u>36</u>	P.S.I.				
G Final Closed-in Pressure	<u>41</u>	P.S.I.				
H Final Hydrostatic Mud	<u>2075</u>	P.S.I.				

flushed tool

PRESSURE BREAKDOWN

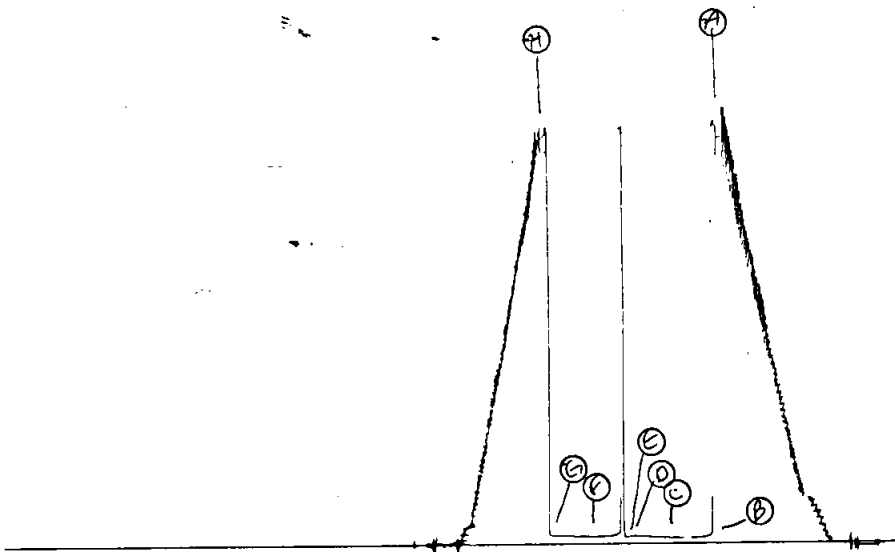
First Flow Pressure		Initial Shut-In		Second Flow Pressure		Final Shut-In	
Breakdown: <u>7</u> Inc.		Breakdown: <u>11</u> Inc.		Breakdown: <u>7</u> Inc.		Breakdown: <u>11</u> Inc.	
of <u>5</u> mins. and a		of <u>3</u> mins. and a		of <u>5</u> mins. and a		of <u>3</u> mins. and a	
final inc. of <u>0</u> Min.		final inc. of <u>0</u> Min.		final inc. of <u>0</u> Min.		final inc. of <u>0</u> Min.	
Point Mins.	Press.	Point Minutes	Press.	Point Minutes	Press.	Point Minutes	Press.
P 1	<u>0</u>	<u>0</u>	<u>31</u>	<u>0</u>	<u>34</u>	<u>0</u>	<u>36</u>
P 2	<u>5</u>	<u>3</u>	<u>37</u>	<u>5</u>	<u>34</u>	<u>3</u>	<u>36</u>
P 3	<u>10</u>	<u>6</u>	<u>32</u>	<u>10</u>	<u>54</u> *	<u>6</u>	<u>37</u>
P 4	<u>15</u>	<u>9</u>	<u>33</u>	<u>15</u>	<u>41</u>	<u>9</u>	<u>37</u>
P 5	<u>20</u>	<u>12</u>	<u>34</u>	<u>20</u>	<u>37</u>	<u>12</u>	<u>38</u>
P 6	<u>25</u>	<u>15</u>	<u>35</u>	<u>25</u>	<u>36</u>	<u>15</u>	<u>38</u>
P 7	<u>30</u>	<u>18</u>	<u>36</u>	<u>30</u>	<u>36</u>	<u>18</u>	<u>39</u>
P 8	<u>35</u>	<u>21</u>	<u>37</u>	<u>35</u>		<u>21</u>	<u>39</u>
P 9	<u>40</u>	<u>24</u>	<u>38</u>	<u>40</u>		<u>24</u>	<u>40</u>
P10	<u>45</u>	<u>27</u>	<u>39</u>	<u>45</u>		<u>27</u>	<u>40</u>
P11	<u>50</u>	<u>30</u>	<u>41</u>	<u>50</u>		<u>30</u>	<u>41</u>
P12	<u>55</u>	<u>33</u>		<u>55</u>		<u>33</u>	
P13	<u>60</u>	<u>36</u>		<u>60</u>		<u>36</u>	
P14		<u>39</u>		<u>65</u>		<u>39</u>	
P15		<u>42</u>		<u>70</u>		<u>42</u>	
P16		<u>45</u>		<u>75</u>		<u>45</u>	
P17		<u>48</u>		<u>80</u>		<u>48</u>	
P18		<u>51</u>		<u>85</u>		<u>51</u>	
P19		<u>54</u>		<u>90</u>		<u>54</u>	
P20		<u>57</u>				<u>57</u>	
		<u>60</u>				<u>60</u>	

13402
DST#4

TRC# 7386

8

I

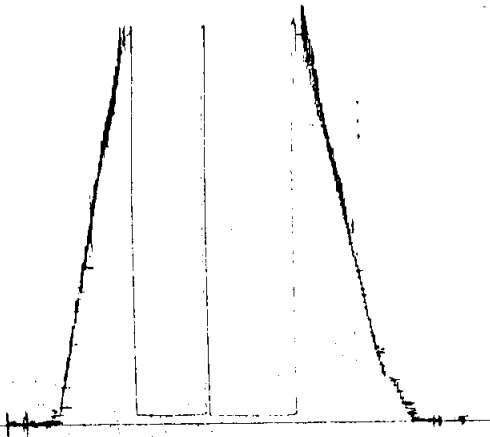


1559
DST#4

ICK# 7384

8

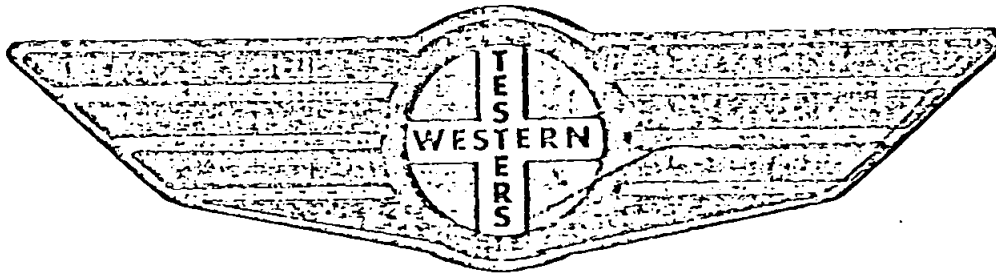
0



FORMATION

TEST

REPORT



Home Office:

Wichita, Kansas 67201

P.O. Box 1599

Phone (316) 262-5861

any W.L. KIRKMAN INC. Lease and Well No. #1-11 RIEPE Sec. 11 Twp. 31s Rge. 15w Test No. 4 Date 10/3/84

WESTERN TESTING CO. INC.
SUBSURFACE PRESSURE SURVEY

DATE: 10/3/84
CUSTOMER: W.L. KIRKMAN INC.
WELL: 1-11 TEST: 4
ELEVATION (KB): 1703 FORMATION: HERTHA
SECTION: 11 TOWNSHIP: 31S
RANGE: 15W COUNTY: BARBER STATE: KANSAS
GAUGE SN #13402 RANGE: 4025 CLOCK: 12

TICKET #7386
LEASE: RIEPE
GEOLOGIST: LOUIS ?

INTERVAL TEST FROM: 4260 FT TO: 4308 FT TOTAL DEPTH: 4308 FT
DEPTH OF SELECTIVE ZONE: FT
PACKER DEPTH: 4255 FT SIZE: 6 3/4 IN PACKER DEPTH: 4260 FT SIZE: 6 3/4 IN
PACKER DEPTH: FT SIZE: IN PACKER DEPTH: FT SIZE: IN

DRILLING CONTRACTOR: ALDEBARAN DRLG
MUD TYPE: CHEMICAL VISCOSITY: 43
WEIGHT: 9.3 WATER LOSS (CC): 12.0
CHLORIDES (P.P.M.): 15500
JARS - MAKE: SERIAL NUMBER:
DID WELL FLOW? NO REVERSED OUT? NO
DRILL COLLAR LENGTH: 540 FT I.D.: 2.2 IN
WEIGHT PIPE LENGTH: FT I.D.: IN
DRILL PIPE LENGTH: 3700 FT I.D.: 3.8 IN
TEST TOOL LENGTH: 20 FT TOOL SIZE: 5 1/2 OD IN
ANCHOR LENGTH: 48 FT SIZE: 5 1/2 OD IN
SURFACE CHOKE SIZE: 3/4 IN BOTTOM CHOKE SIZE: 3/4 IN
MAIN HOLE SIZE: 7 7/8 IN TOOL JOINT SIZE: 4 1/2 XH IN

BLOW: INITIAL FLOW PERIOD VERY WEAK BLOW.
DIED IN 25 MINUTES. FINAL FLOW
PERIOD NO BLOW. FLUSHED TOOLS
NO HELP.

RECOVERED: 20 FT OF: MUD.
RECOVERED: FT OF:
RECOVERED: FT OF:
RECOVERED: FT OF:
RECOVERED: FT OF:
RECOVERED: FT OF:
RECOVERED: FT OF:
RECOVERED: FT OF:
RECOVERED: FT OF:
RECOVERED: FT OF:

REMARKS:

TIME SET PACKER(S): 7:10 PM TIME STARTED OFF BOTTOM: 9:10 PM
WELL TEMPERATURE: 116 °F
INITIAL HYDROSTATIC PRESSURE: (A) 2085 PSI
INITIAL FLOW PERIOD MIN: 30 (B) 31 PSI TO (C) 31 PSI
INITIAL CLOSED IN PERIOD MIN: 30 (D) 41 PSI
FINAL FLOW PERIOD MIN: 30 (E) 34 PSI TO (F) 36 PSI
FINAL CLOSED IN PERIOD MIN: 30 (G) 41 PSI
FINAL HYDROSTATIC PRESSURE (H) 2075 PSI

