

KANSAS



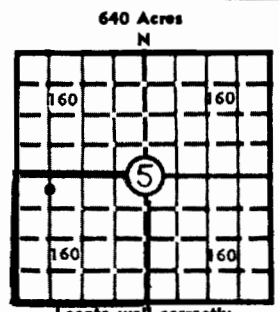
WELL COMPLETION REPORT AND DRILLER'S LOG

WICHITA BRANCH

API No. 15 - 033 - 20,423
County Number

S. 5 T. 31 R. 18 W
Loc. C N/2 NW/4 SW/4
County Comanche

Operator: Altman Operating Company
Address: 1901 Fourth National Bank Bldg.
Well No. 2 Lease Name: Robinson
Footage Location: 330 feet from (N) line, 660 feet from (W) line
Principal Contractor: Xplor Drilling Geologist: Frank Bennett
Spud Date: 3-27-81 Date Completed: 4-06-81 Total Depth: 5142'
Directional Deviation: Oil and/or Gas Purchaser:



Elev.: Gr. 2187'
DF 2193' KB 2195'

CASING RECORD

Report of all strings set - surface, intermediate, production, etc.

Table with 8 columns: Purpose of string, Size hole drilled, Size casing set (in O.D.), Weight lbs/ft., Setting depth, Type cement, Sacks, Type and percent additives. Row 1: Surface, 12-1/4", 8-5/8", 23, 624', Class "A", 375, 3% Ca1, 1/4% flo

LINER RECORD

PERFORATION RECORD

Tables for Liner Record (Top, Bottom, Sacks cement) and Tubing Record (Size, Setting depth, Packer set at).

ACID, FRACTURE, SHOT, CEMENT SQUEEZE RECORD

Table with 2 columns: Amount and kind of material used, Depth interval treated.

INITIAL PRODUCTION

Date of first production, Producing method (flowing, pumping, gas lift, etc.) dry hole
RATE OF PRODUCTION PER 24 HOURS: Oil, Gas, Water, Gas-oil ratio
Disposition of gas (vented, used on lease or sold), Producing interval(s)

INSTRUCTIONS: As provided in KCC Rule 82-2-125, within 90 days after completion of a well, one completed copy of this Drillers Log shall be transmitted to the State Geological Survey of Kansas, 4150 Monroe Street, Wichita, Kansas 67209.

Operator Altman Operating Company

DESIGNATE TYPE OF COMP.: OIL, GAS, DRY HOLE, SWDW, ETC.:

Well No.

2

Lease Name

Robinson

dry hole

S 5 T 31 S R 18 W

WELL LOG

Show all important zones of porosity and contents thereof; cored intervals, and all drill-stem tests, including depth interval tested, cushion used, time tool open, flowing and shut-in pressures, and recoveries.

SHOW GEOLOGICAL MARKERS, LOGS RUN, OR OTHER DESCRIPTIVE INFORMATION.

FORMATION DESCRIPTION, CONTENTS, ETC.	TOP	BOTTOM	NAME	DEPTH
Heebner Shale	4272'			
Toronto Lime	4289'			
Brown Lime	4441'			
Lansing Lime	4459'			
Kansas City Lime	4886'			
Marmaton Lime	4903'			
Cherokee Shale	5028'			
Mississippi Lime	5104'			
TD:	5142'			

USE ADDITIONAL SHEETS, IF NECESSARY, TO COMPLETE WELL RECORD.

Date Received

R. G. Altman

Ronny G. Altman

Signature

Vice President

Title

April 16, 1981

Date