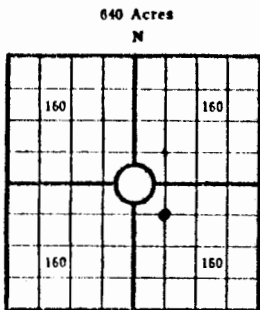


WELL RECORD

11-31-18W

(Mail to Kansas Geological Survey, 4150 Monroe Street, Wichita, Kansas 67209)



Lease Name: Boisseau "B" Well No. 1  
 Well Located: 1980'FSL & 1980'FEL  
SEC 11 TWP 31S RGE 18W  
 Operator: Anadarko Production Company  
 Address: Box 351 Liberal, Kansas 67901  
 Elevation: Ground 2135.0 D.F. K.B.  
 Type Well: (Oil, gas, dry hole) Gas

Drilling Commenced: 12/6 19 71 Drilling Completed: 12/21 19 71  
 Well Completed: 12/31 19 71 Total Depth 5160  
 Initial Production: CWHOF 4700 MCFD

Casing Record

Size: 8 5/8 Set at 555 Size: 2 3/8 Set at 5022  
 Size: 4 1/2 Set at 5158 Size: \_\_\_\_\_ Set at \_\_\_\_\_

Liner Record

Size: \_\_\_\_\_ Set from \_\_\_\_\_ To \_\_\_\_\_

Cementing

<u>Casing Size</u>	<u>Sacks</u>	<u>Type Cement and Additives</u>
<u>8 5/8</u>	<u>500</u>	<u>Common 2% CC</u>
<u>4 1/2</u>	<u>160</u>	<u>Salt Sat. Pozmix + .5% CFR-2</u>
<u>2 3/8</u>	<u>SN @ 5006'</u>	

Perforations

<u>Formation</u>	<u>Perforated Interval and Number Shots</u>
<u>Mississippi</u>	<u>5016 - 20 W/2SPF</u>
<u>Mississippi</u>	<u>5008 - 14 W/2SPF</u>
_____	_____
_____	_____

Electric Log Run (Show type log and depths covered)

Schlumberger - Dual Induction - Laterlog (555 - 5147')  
Sonic Log - Gamma Ray (2450 - 5152')

11-31-180

Show Drill Stem Tests,  
Well Stimulation and  
Production Tests

Formation	Top	Bottom
Clay	0	33
Clay, Sand & Red Bed	33	556
Shale & Red Bed	556	1315
Shale	1315	1660
Lime & Shale	1660	2370
Shale & Lime	2370	4167
Lime & Shale	4167	4335
Lime	4335	4510
Cherty Lime	4510	5113
Lime	5113	5160
TOTAL DEPTH	5160	

DST #1 (4988 - 5041' (Miss.)  
10 min. PF W/GTS in 4 1/2 min., gas ga 277 MCFD.  
Tool open 40 min. W/stab gas @ 367 MCFD. Recvd  
233' fluid (113' O&GC DM, 120' DM).  
ISIP 1589# (40), FP's 56-74#, 65-93#, FSIP 1570# (40).

11-31-180

API #15-033-20, 110

11-31-18W

JUL 26 1972

DRILLER'S LOG

WELL NAME Boisseau "B" #1 COMPANY OPERATING Anadarko PProduction Company  
 ADDRESS OF COMPANY Box 351 Liberal, Kansas 67901

WELL LOCATION C 1/4 NW 1/4 SE 1/4  
1980 Ft. North of South Line,  
         Ft. East of West Line, Sec. 11, Twp. 31S, Rge. 18W, Comanche County, Kansas

DRILLING STARTED 12/6, 19 71, DRILLING COMPLETED 12/21, 19 71  
 WELL COMPLETED 12/31, 19 71, WELL CONNECTED \_\_\_\_\_, 19 \_\_\_\_\_

ELEVATION 2135.0 Ft. Ground Level CHARACTER of WELL (Oil, Gas, Dry Hole) Gas

OR GAS SANDS OR ZONES - PERFORATIONS - ACIDIZING AND FRACTURING INFORMATION					
Name	From	To	No. of Shots	Gallons Used	Kind Used
Mississippi	5016	5020	8	Acidized 500	15% NE
	5008	5014	12	Acidized 3500	Mod 202

CASING RECORD

Size	Amount Set	Sacks of Cement	Amount Pulled
8 5/8	555	500	NONE
4 1/2	5158	160	NONE
2 3/8	5022	SN @ 5006'	NONE

FORMATION RECORD

Formation	Top	Bottom	Formation	Top	Bottom
	0	33			
Clay, Sand & Red Bed	33	556			
Shale & Red Bed	556	1315			
Shale	1315	1660			
Lime & Shale	1660	2370			
Shale & Lime	2370	4167			
Lime & Shale	4167	4335			
Lime	4335	4510			
Cherty Lime	4510	5113			
Lime	5113	5160			
TOTAL DEPTH	5160				

RECEIVED  
 STATE CORPORATION COMMISSION  
 FEB 11 1972  
 CONSERVATION DIVISION  
 Wichita, Kansas

RECEIVED  
 STATE GEOLOGICAL SURVEY OF KANSAS  
 AUG 1 1972

RESULTS OF INITIAL PRODUCTION TEST: Check Test taken 1/14/72 CWHOF 4700 MCFD

LOG TOPS

Chase	2500	LKC	4385
Win	2564	BKC	4806
Co Gr	2871	Marm	4860
Adm	3355	Cher	4952
Wab	3483	Miss	5006
Top	3728	Rtd	5160
Heeb	4198		
Ba La	4368		