

32-31-19W

RECEIVED #1
KANSAS CORPORATION COMMISSION

Ricketts Testing, Inc.

MAY 09 2002



CONSERVATION DIVISION
WICHITA, KS

Company PICKRELL DRILLING COMPANY, INC. Lease & Well No. BIRD "M" #1

Elevation 2153 K.B. Formation MISSISSIPPI Ticket No. 2035

Date 1-13-02 Sec. 32 Twp. 31S Range 19W County COMANCHE State KS

Test Approved by _____ Ricketts Representative JIM RICKETTS

Formation Test No. 1 Interval Tested from 5194 ft. to 5290 ft. Total Depth 5290 ft.

Packer Depth 5194 ft. Size 6 3/4 in. Packer Depth _____ ft. Size _____ in.

Packer Depth 5191 ft. Size 6 3/4 in. Packer Depth _____ ft. Size _____ in.

Depth of Selective Zone Set _____

Top Recorder Depth (Inside) 5199 ft. Recorder Number 13306 Cap. 4625

Bottom Recorder Depth (Outside) 5202 ft. Recorder Number Z43 Cap. 6000

Below Straddle Recorder Depth _____ ft. Recorder Number _____ Cap. _____

Drilling Contractor PICKRELL DRILLING RIG #1 Drill Collar Length 246 I.D. 2.25 in.

Mud Type CHEMICAL Viscosity 54 Weight Pipe Length _____ I.D. _____ in.

Weight 9.1 Water Loss 10.4 cc. Drill Pipe Length 4926 I.D. 3.25 in.

Chlorides 3800 P.P.M. Test Tool Length 22 ft. Tool Size. 5 1/2 in.

Jars: Make _____ Serial Number _____ Anchor Length 96 ft. Size 5 1/2 in.

Did Well Flow? NO Reversed Out NO Surface Choke Size 3/4 in. Bottom Choke Size 3/4 in.

Gravity Oil _____ Main Hole Size 7 7/8 in. Tool Joint Size 4 1/2 XH in.

Blow: STRONG BLOW. GAS TO SURFACE IN 29 MINUTES INITIAL FLOW PERIOD. GAUGED 3710 CFPD DOWN TO 1680 CFPD.

Recovered 180 ft. of GAS CUT MUD.

Recovered _____ ft. of _____

Recovered _____ ft. of _____

Recovered _____ ft. of _____

Recovered _____ ft. of _____

Remarks: _____

Time Set Packer (s) 12:50 A.M. Time Started Off Bottom 4:50 A.M. Maximum Temperature 123°

Initial Hydrostatic Pressure.....(A) 2540 P.S.I.

Initial Flow PeriodMinutes 30 (B) 42 P.S.I. to

(C) 56 P.S.I.

Initial Closed In PeriodMinutes 60 (D) 677 P.S.I.

Final Flow PeriodMinutes 60 (E) 21 P.S.I. to

(F) 78 P.S.I.

Final Closed In PeriodMinutes 90 (G) 615 P.S.I.

Final Hydrostatic Pressure(H) 2392 P.S.I.



Company Name Pickrell Drig. Co. Inc.
 Well Name Bird "M" 1
 Type of Test DST #1
 Date(s) of Test 1/13/02



Date	Time	Cum. T. 1 (Z43)	Pres 1 (Z43)	Temp 1 (Z43)
		hr	psig	deg F
2002/01/13	00:48:52	2.1667	2467.961	111.117
2002/01/13	00:50:52	2.2000	2468.095	111.427
2002/01/13	00:52:52	2.2333	2584.105	111.684
Initial HYD				
2002/01/13	00:54:37	2.2625	2540.979	111.875
2002/01/13	00:54:52	2.2667	570.796	112.104
Initial Flow				
2002/01/13	00:56:37	2.2958	42.958	112.408
2002/01/13	00:56:52	2.3000	47.355	112.444
2002/01/13	00:58:52	2.3333	70.644	112.811
2002/01/13	01:00:52	2.3667	65.698	113.176
2002/01/13	01:02:52	2.4000	67.241	113.459
2002/01/13	01:04:52	2.4333	66.800	113.688
2002/01/13	01:06:52	2.4667	72.233	113.884
2002/01/13	01:08:52	2.5000	60.817	114.049
2002/01/13	01:10:52	2.5333	79.466	114.177
2002/01/13	01:12:52	2.5667	57.148	114.303
2002/01/13	01:14:52	2.6000	80.134	114.402
2002/01/13	01:16:52	2.6333	55.808	114.508
2002/01/13	01:18:52	2.6667	76.266	114.602
2002/01/13	01:20:52	2.7000	54.898	114.715
2002/01/13	01:22:52	2.7333	81.211	114.793
2002/01/13	01:24:52	2.7667	58.435	114.901
Initial Flow				
2002/01/13	01:25:07	2.7708	56.752	114.915
2002/01/13	01:26:52	2.8000	88.411	114.980
2002/01/13	01:28:52	2.8333	120.067	115.066
2002/01/13	01:30:52	2.8667	150.551	115.165
2002/01/13	01:32:52	2.9000	180.152	115.264
2002/01/13	01:34:52	2.9333	208.770	115.378
2002/01/13	01:36:52	2.9667	236.007	115.497
2002/01/13	01:38:52	3.0000	262.275	115.617
2002/01/13	01:40:52	3.0333	287.720	115.743
2002/01/13	01:42:52	3.0667	311.973	115.873
2002/01/13	01:44:52	3.1000	335.610	116.008
2002/01/13	01:46:52	3.1333	358.418	116.141
2002/01/13	01:48:52	3.1667	380.223	116.290
2002/01/13	01:50:52	3.2000	401.389	116.438
2002/01/13	01:52:52	3.2333	421.779	116.593
2002/01/13	01:54:52	3.2667	441.382	116.746
2002/01/13	01:56:52	3.3000	460.124	116.904
2002/01/13	01:58:52	3.3333	478.408	117.061
2002/01/13	02:00:52	3.3667	496.099	117.230
2002/01/13	02:02:52	3.4000	513.139	117.396
2002/01/13	02:04:52	3.4333	529.723	117.561
2002/01/13	02:06:52	3.4667	545.637	117.721
2002/01/13	02:08:52	3.5000	561.141	117.885
2002/01/13	02:10:52	3.5333	576.130	118.058
2002/01/13	02:12:52	3.5667	590.792	118.220
2002/01/13	02:14:52	3.6000	605.081	118.382



Company Name Pickrell Drig. Co. Inc.
 Well Name Bird "M" 1
 Type of Test DST #1
 Date(s) of Test 1/13/02



Date	Time	Cum. T. 1 (Z43)	Pres 1 (Z43)	Temp 1 (Z43)
		hr	psig	deg F
2002/01/13	02:16:52	3.6333	618.906	118.548
2002/01/13	02:18:52	3.6667	632.536	118.706
2002/01/13	02:20:52	3.7000	645.681	118.870
2002/01/13	02:22:52	3.7333	658.493	119.026
2002/01/13	02:24:52	3.7667	671.054	119.185
Initial Buildup				
2002/01/13	02:25:52	3.7833	677.025	119.259
2002/01/13	02:26:52	3.8000	22.916	119.449
Final Flow				
2002/01/13	02:27:37	3.8125	21.643	119.417
2002/01/13	02:28:52	3.8333	42.384	119.408
2002/01/13	02:30:52	3.8667	66.745	119.489
2002/01/13	02:32:52	3.9000	79.282	119.586
2002/01/13	02:34:52	3.9333	67.920	119.678
2002/01/13	02:36:52	3.9667	75.964	119.759
2002/01/13	02:38:52	4.0000	80.875	119.824
2002/01/13	02:40:52	4.0333	62.856	119.894
2002/01/13	02:42:52	4.0667	71.121	119.948
2002/01/13	02:44:52	4.1000	78.235	119.997
2002/01/13	02:46:52	4.1333	68.481	120.047
2002/01/13	02:48:52	4.1667	71.966	120.088
2002/01/13	02:50:52	4.2000	71.163	120.128
2002/01/13	02:52:52	4.2333	67.006	120.173
2002/01/13	02:54:52	4.2667	71.138	120.205
2002/01/13	02:56:52	4.3000	76.371	120.241
2002/01/13	02:58:52	4.3333	76.277	120.277
2002/01/13	03:00:52	4.3667	77.359	120.315
2002/01/13	03:02:52	4.4000	80.758	120.348
2002/01/13	03:04:52	4.4333	84.263	120.382
2002/01/13	03:06:52	4.4667	79.487	120.418
2002/01/13	03:08:52	4.5000	70.640	120.454
2002/01/13	03:10:52	4.5333	71.954	120.481
2002/01/13	03:12:52	4.5667	74.700	120.517
2002/01/13	03:14:52	4.6000	78.609	120.544
2002/01/13	03:16:52	4.6333	81.178	120.571
2002/01/13	03:18:52	4.6667	82.910	120.603
2002/01/13	03:20:52	4.7000	70.612	120.637
2002/01/13	03:22:52	4.7333	72.217	120.675
2002/01/13	03:24:52	4.7667	75.977	120.702
Final Flow				
2002/01/13	03:25:07	4.7708	78.360	120.709
2002/01/13	03:26:52	4.8000	93.708	120.729
2002/01/13	03:28:52	4.8333	110.529	120.762
2002/01/13	03:30:52	4.8667	127.060	120.801
2002/01/13	03:32:52	4.9000	143.330	120.841
2002/01/13	03:34:52	4.9333	159.386	120.884
2002/01/13	03:36:52	4.9667	175.188	120.929
2002/01/13	03:38:52	5.0000	190.706	120.976
2002/01/13	03:40:52	5.0333	205.703	121.030
2002/01/13	03:42:52	5.0667	220.443	121.086



Company Name Pickrell Drig. Co. Inc.
 Well Name Bird "M" 1
 Type of Test DST #1
 Date(s) of Test 1/13/02



Date	Time	Cum. T. 1 (Z43)	Pres 1 (Z43)	Temp 1 (Z43)
		hr	psig	deg F
2002/01/13	03:44:52	5.1000	234.828	121.143
2002/01/13	03:46:52	5.1333	248.986	121.204
2002/01/13	03:48:52	5.1667	263.098	121.260
2002/01/13	03:50:52	5.2000	276.812	121.325
2002/01/13	03:52:52	5.2333	290.454	121.392
2002/01/13	03:54:52	5.2667	303.682	121.465
2002/01/13	03:56:52	5.3000	316.715	121.536
2002/01/13	03:58:52	5.3333	329.383	121.611
2002/01/13	04:00:52	5.3667	341.799	121.683
2002/01/13	04:02:52	5.4000	354.063	121.753
2002/01/13	04:04:52	5.4333	366.074	121.822
2002/01/13	04:06:52	5.4667	377.921	121.905
2002/01/13	04:08:52	5.5000	389.571	121.978
2002/01/13	04:10:52	5.5333	401.152	122.052
2002/01/13	04:12:52	5.5667	412.423	122.130
2002/01/13	04:14:52	5.6000	423.487	122.209
2002/01/13	04:16:52	5.6333	434.388	122.283
2002/01/13	04:18:52	5.6667	445.111	122.369
2002/01/13	04:20:52	5.7000	455.702	122.450
2002/01/13	04:22:52	5.7333	466.103	122.526
2002/01/13	04:24:52	5.7667	476.331	122.603
2002/01/13	04:26:52	5.8000	486.381	122.677
2002/01/13	04:28:52	5.8333	496.288	122.756
2002/01/13	04:30:52	5.8667	506.008	122.833
2002/01/13	04:32:52	5.9000	515.627	122.909
2002/01/13	04:34:52	5.9333	525.151	122.986
2002/01/13	04:36:52	5.9667	534.381	123.066
2002/01/13	04:38:52	6.0000	543.520	123.138
2002/01/13	04:40:52	6.0333	552.509	123.219
2002/01/13	04:42:52	6.0667	561.313	123.292
2002/01/13	04:44:52	6.1000	569.990	123.364
2002/01/13	04:46:52	6.1333	578.430	123.433
2002/01/13	04:48:52	6.1667	586.933	123.507
2002/01/13	04:50:52	6.2000	595.192	123.579
2002/01/13	04:52:52	6.2333	603.344	123.652
2002/01/13	04:54:52	6.2667	611.458	123.719
Final Buildup				
2002/01/13	04:55:52	6.2833	615.440	123.757
2002/01/13	04:56:52	6.3000	2316.085	123.654
Initial Buildup				
2002/01/13	04:57:22	6.3083	2362.491	123.692
2002/01/13	04:58:52	6.3333	2288.681	123.807
2002/01/13	05:00:52	6.3667	2296.060	123.940
2002/01/13	05:02:52	6.4000	2064.853	124.070
2002/01/13	05:04:52	6.4333	2445.821	124.032
2002/01/13	05:06:52	6.4667	2418.231	123.975
2002/01/13	05:08:52	6.5000	2406.053	123.922
2002/01/13	05:10:52	6.5333	2397.060	123.863
2002/01/13	05:12:52	6.5667	2389.912	123.807
2002/01/13	05:14:52	6.6000	2407.524	123.742



Company Name Pickrell Drig. Co. Inc.
Well Name Bird "M" 1
Type of Test DST #1
Date(s) of Test 1/13/02



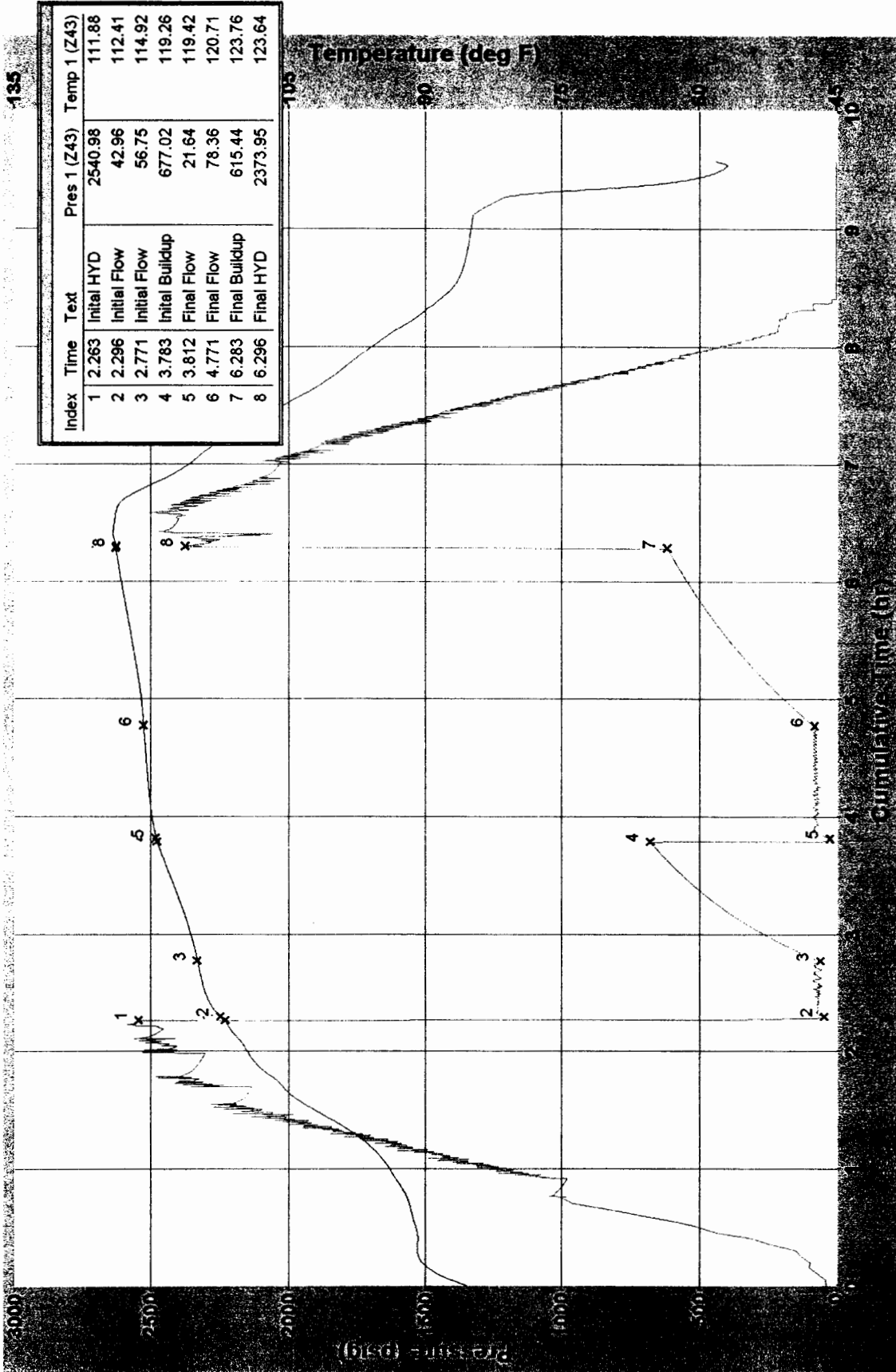
Date	Time	Cum. T. 1 (Z43)	Pres 1 (Z43)	Temp 1 (Z43)
		hr	psig	deg F
2002/01/13	05:16:52	6.6333	2412.769	123.604
2002/01/13	05:18:52	6.6667	2303.340	123.366
2002/01/13	05:20:52	6.7000	2359.464	122.891
2002/01/13	05:22:52	6.7333	2324.301	122.247
2002/01/13	05:24:52	6.7667	2166.479	121.473
2002/01/13	05:26:52	6.8000	2137.173	120.598
2002/01/13	05:28:52	6.8333	2155.782	119.683
2002/01/13	05:30:52	6.8667	2115.883	118.789
2002/01/13	05:32:52	6.9000	2082.632	117.937
2002/01/13	05:34:52	6.9333	2055.252	117.135
2002/01/13	05:36:52	6.9667	2043.548	116.404
2002/01/13	05:38:52	7.0000	2033.146	115.777
2002/01/13	05:40:52	7.0333	2071.166	115.237
2002/01/13	05:42:52	7.0667	2014.245	114.748
2002/01/13	05:44:52	7.1000	1958.302	114.211
2002/01/13	05:46:52	7.1333	1908.338	113.589
2002/01/13	05:48:52	7.1667	1779.764	112.917
2002/01/13	05:50:52	7.2000	1858.999	112.244
2002/01/13	05:52:52	7.2333	1801.299	111.567
2002/01/13	05:54:52	7.2667	1746.742	110.865
2002/01/13	05:56:52	7.3000	1685.453	110.122
2002/01/13	05:58:52	7.3333	1624.916	109.400
2002/01/13	06:00:52	7.3667	1566.585	108.702
2002/01/13	06:02:52	7.4000	1502.441	107.929
2002/01/13	06:04:52	7.4333	1445.739	107.116
2002/01/13	06:06:52	7.4667	1405.997	106.317
2002/01/13	06:08:52	7.5000	1275.352	105.550
2002/01/13	06:10:52	7.5333	1205.065	104.783
2002/01/13	06:12:52	7.5667	1141.082	103.986
2002/01/13	06:14:52	7.6000	1091.062	103.181
2002/01/13	06:16:52	7.6333	1089.137	102.411
2002/01/13	06:18:52	7.6667	1030.968	101.721
2002/01/13	06:20:52	7.7000	964.774	101.037
2002/01/13	06:22:52	7.7333	905.458	100.386
2002/01/13	06:24:52	7.7667	823.293	99.790
2002/01/13	06:26:52	7.8000	734.645	99.244
2002/01/13	06:28:52	7.8333	721.518	98.703
2002/01/13	06:30:52	7.8667	625.244	98.179
2002/01/13	06:32:52	7.9000	601.848	97.617
2002/01/13	06:34:52	7.9333	555.770	97.023
2002/01/13	06:36:52	7.9667	483.224	96.429
2002/01/13	06:38:52	8.0000	423.491	95.826
2002/01/13	06:40:52	8.0333	349.721	95.223
2002/01/13	06:42:52	8.0667	303.951	94.620
2002/01/13	06:44:52	8.1000	273.952	94.030
2002/01/13	06:46:52	8.1333	215.596	93.411
2002/01/13	06:48:52	8.1667	212.769	92.640
2002/01/13	06:50:52	8.2000	207.368	91.906
2002/01/13	06:52:52	8.2333	208.422	91.251
2002/01/13	06:54:52	8.2667	183.561	90.669

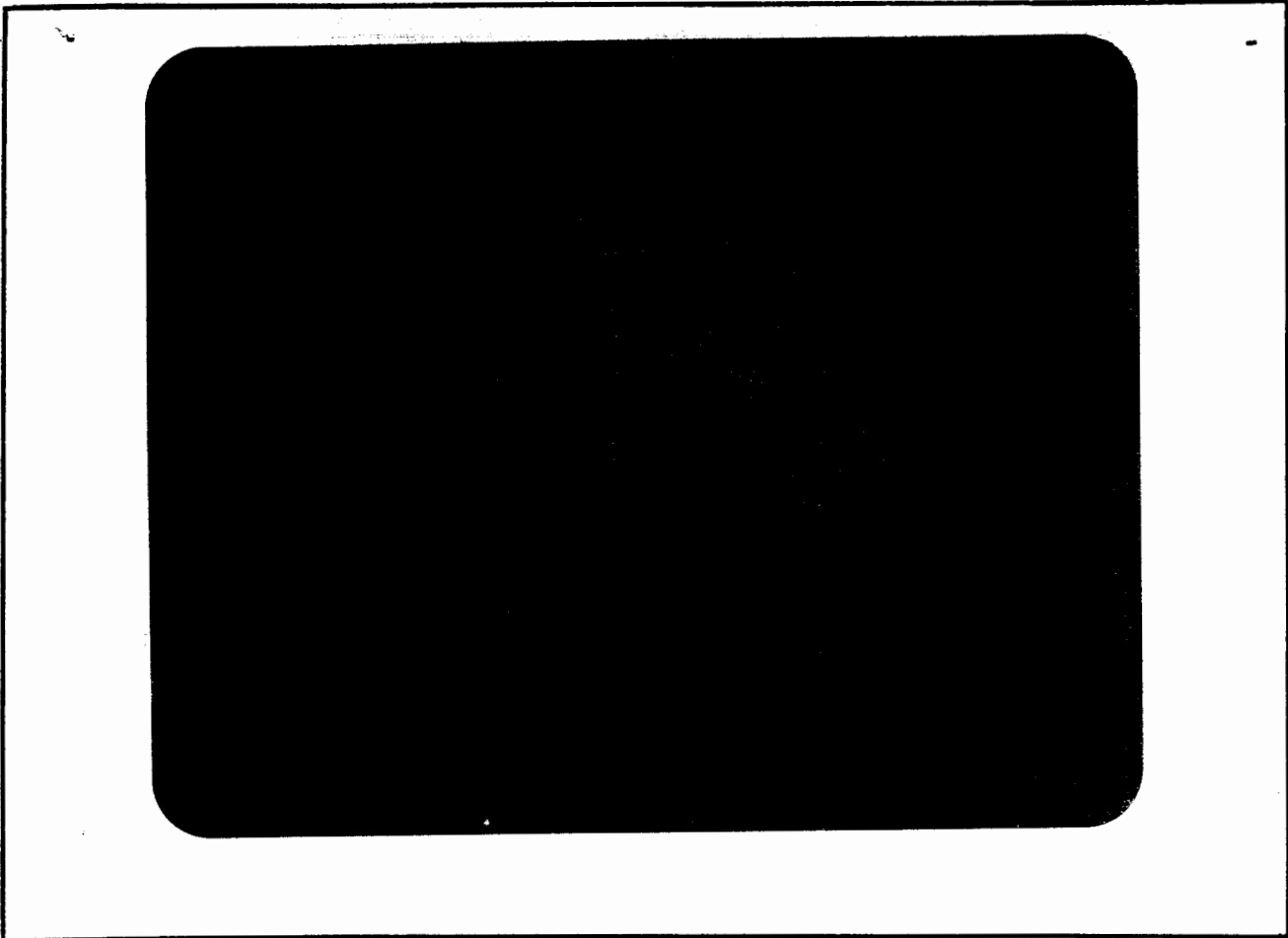


Company Name Pickrell Drig. Co. Inc.
 Well Name Bird "M"
 Type of Test DST#1
 Date(s) of Test 1/13/02



Z43 Graph (1)





This is an actual photograph of recorder chart.

POINT	PRESSURE		PSI
	Field Reading	Office Reading	
(A) Initial Hydrostatic Mud	PSI
(B) First Initial Flow Pressure	PSI
(C) First Final Flow Pressure	PSI
(D) Initial Closed-in Pressure	PSI
(E) Second Initial Flow Pressure	PSI
(F) Second Final Flow Pressure	PSI
(G) Final Closed-in Pressure	PSI
(H) Final Hydrostatic Mud	PSI

Ricketts Testing, Inc.

RECEIVED
KANSAS CORPORATION COMMISSION

MAY 09 2002

CONSERVATION DIVISION
WICHITA, KS

Company PICKRELL DRILLING COMPANY, INC. Lease & Well No. BIRD "M" #1
 Elevation 2153 K.B. Formation MISSISSIPPI Ticket No. 2036
 Date 1-13-02 Sec. 32 Twp. 31S Range 19W County COMANCHE State KS
 Test Approved by _____ Ricketts Representative JIM RICKETTS

Formation Test No. 2 Interval Tested from 5290 ft. to 5322 ft. Total Depth 5322 ft.
 Packer Depth 5290 ft. Size 6 3/4 in. Packer Depth _____ ft. Size _____ in.
 Packer Depth 5287 ft. Size 6 3/4 in. Packer Depth _____ ft. Size _____ in.
 Depth of Selective Zone Set _____

Top Recorder Depth (Inside) 5295 ft. Recorder Number 13306 Cap. 4625
 Bottom Recorder Depth (Outside) 5298 ft. Recorder Number Z43 Cap. 6000
 Below Straddle Recorder Depth _____ ft. Recorder Number _____ Cap. _____

Drilling Contractor PICKRELL DRILLING RIG #1 Drill Collar Length 246 I.D. 2.25 in.
 Mud Type CHEMICAL Viscosity 62 Weight Pipe Length _____ I.D. _____ in.
 Weight 9.1 Water Loss 8.8 cc. Drill Pipe Length 5022 I.D. 3.25 in.
 Chlorides 4600 P.P.M. Test Tool Length 22 ft. Tool Size 5 1/2 in.
 Jars: Make _____ Serial Number _____ Anchor Length 32 ft. Size 5 1/2 in.
 Did Well Flow? NO Reversed Out NO Surface Choke Size 3/4 in. Bottom Choke Size 3/4 in.
 Gravity Oil _____ Main Hole Size 7 7/8 in. Tool Joint Size 4 1/2 XH in.

Blow: STRONG BLOW IN 5 MINUTES INITIAL FLOW PERIOD.
STRONG BLOW IN 5 MINUTES FINAL FLOW PERIOD.

Recovered 400 ft. of MUD CUT WATER WITH A TRACE OF OIL.
 Recovered 1265 ft. of GAS IN PIPE.
 Recovered _____ ft. of _____
 Recovered _____ ft. of _____
 Recovered _____ ft. of _____

Remarks: DST FLUID CHLORIDES 70,000 PPM

Time Set Packer (s) 8:15 P.M. Time Started Off Bottom 12:15 A.M. Maximum Temperature 129°
 Initial Hydrostatic Pressure.....(A) 2615 P.S.I.
 Initial Flow PeriodMinutes 30 (B) 49 P.S.I. to
 (C) 113 P.S.I.
 Initial Closed In PeriodMinutes 60 (D) 1690 P.S.I.
 Final Flow PeriodMinutes 60 (E) 132 P.S.I. to
 (F) 188 P.S.I.
 Final Closed In Period.....Minutes 90 (G) 1621 P.S.I.
 Final Hydrostatic Pressure(H) 2459 P.S.I.

Pressure Test Report

COMPANY INFORMATION

Company Name Pickrell Drilling Co. Inc.
Representative
Phone
Fax
Address

E-Mail Address
Service Company

WELL INFORMATION

Well Name Bird "M" #1
Well Location 32/31S/19W NE SW SE
Field and Pool Bean
Status (Oil, Gas, Water, Injection)
Perforated Intervals
Mid-point of Perforated Intervals (MPP)
Drilling Rig Number Pickrell Drlg. Rig #1
Elevations
 Kelly Bushing (KB) 2153KB
 Casing Flange (CF)
 KB-CF
 Ground Level
Plug Back Total Depth
Total Depth 5322
Production Casing
Production Tubing

TEST INFORMATION

Type of Test DST #2
Date(s) of Test 1/13/02
Dead-weight Gauge Tubing Pressure
Dead-weight Gauge Casing Pressure
Shut-in Date (Duration)
Date / Time on Bottom 8:15 PM
Date / Time off Bottom 12:15 AM

Probe Serial Number Z43
Probe Offset from End of Tool String
Run Depth at Probe Pressure Port

PRESSURE TEST RESULTS

Maximum Recorded Probe Pressure 2680.5 psig
Maximum Recorded Probe Temperature 130.0 deg F
Final Buildup Pressure
Gradient Survey Information
 Extrapolated Pressure to MPP
 Final Gradient at Depth
Job Number



Company Name Pickrell Drilling Co. Inc.
 Well Name Bird "M" #1
 Type of Test DST #2
 Date(s) of Test 1/13/02



PROBE INFORMATION

Probe Serial Number Z43
 Model Level II
 Pressure
 Calibrated Pressure Range 0.0 - 6000.0 psig
 Accuracy 0.05% FS
 Resolution 0.0015% FS
 Temperature
 Calibrated Temperature Range -2.7 - 303.7 deg F
 Accuracy 0.25% FS
 Resolution 0.002% FS
 Calibration File Used for Reports Z43DE26A.CAL

PROGRAMMING DETAILS

<u>Step</u>	<u>Sample Mode</u>	<u>Period</u>	<u>Duration</u>	<u>Comment</u>
0	Pause	5 seconds	25 seconds	Test mode
1	Pressure Trigger	30 seconds	indefinite	Trig @ 20 psi
2	Normal	3 minutes	45 minutes	
3	Overrun	15 seconds	end of memory	Fill remaining memory

Program Start Time Jan 13/2002 @ 18:32:32
 Program End Time Jan 14/2002 @ 03:06:17
 Total Samples Taken 1891
 Usage for this Test 0.0700 Ah
 Generic Data File Name Z43JA14A.GEN



Company Name Pickrell Drilling Co. Inc.
Well Name Bird "M" #1
Type of Test DST #2
Date(s) of Test 1/13/02



COMMENTS

Reported By

James Ricketts

Strong Blow in 5 MINS. Recover 1265' Gas in pipe 400'Mud cut water with trace of oil DST Fl. Chloride
70,000 PPM



Company Name Pickrell Drilling Co. Inc.
 Well Name Bird "M" #1
 Type of Test DST #2
 Date(s) of Test 1/13/02



Date	Time	Cum. T. 1 (Z43)	Pres 1 (Z43)	Temp 1 (Z43)
		hr	psig	deg F
2002/01/13	20:10:02	1.6250	2542.189	106.777
2002/01/13	20:11:32	1.6500	2520.953	107.125
2002/01/13	20:13:02	1.6750	2680.517	107.420
2002/01/13	20:14:32	1.7000	2629.040	107.746
Initial HYD				
2002/01/13	20:15:32	1.7167	2615.231	107.983
Initial Flow				
2002/01/13	20:15:47	1.7208	49.584	108.356
2002/01/13	20:16:02	1.7250	48.000	108.430
2002/01/13	20:17:32	1.7500	54.328	108.711
2002/01/13	20:19:02	1.7750	61.992	108.934
2002/01/13	20:20:32	1.8000	68.743	109.150
2002/01/13	20:22:02	1.8250	74.029	109.371
2002/01/13	20:23:32	1.8500	81.658	109.618
2002/01/13	20:25:02	1.8750	86.818	109.877
2002/01/13	20:26:32	1.9000	92.827	110.178
2002/01/13	20:28:02	1.9250	98.350	110.545
2002/01/13	20:29:32	1.9500	102.001	110.961
2002/01/13	20:31:02	1.9750	100.259	111.447
2002/01/13	20:32:32	2.0000	102.448	111.972
2002/01/13	20:34:02	2.0250	101.557	112.539
2002/01/13	20:35:32	2.0500	103.103	113.122
2002/01/13	20:37:02	2.0750	104.117	113.720
2002/01/13	20:38:32	2.1000	106.210	114.314
2002/01/13	20:40:02	2.1250	106.843	114.910
2002/01/13	20:41:32	2.1500	108.729	115.488
2002/01/13	20:43:02	2.1750	110.466	116.049
2002/01/13	20:44:32	2.2000	112.321	116.596
Initial Flow				
2002/01/13	20:45:47	2.2208	113.528	117.045
2002/01/13	20:46:02	2.2250	149.964	117.115
2002/01/13	20:47:32	2.2500	713.282	117.536
2002/01/13	20:49:02	2.2750	1107.060	118.038
2002/01/13	20:50:32	2.3000	1278.467	118.544
2002/01/13	20:52:02	2.3250	1372.153	119.050
2002/01/13	20:53:32	2.3500	1431.232	119.527
2002/01/13	20:55:02	2.3750	1475.234	119.979
2002/01/13	20:56:32	2.4000	1506.668	120.405
2002/01/13	20:58:02	2.4250	1530.807	120.798
2002/01/13	20:59:32	2.4500	1549.729	121.152
2002/01/13	21:01:02	2.4750	1565.165	121.498
2002/01/13	21:02:32	2.5000	1578.308	121.802
2002/01/13	21:04:02	2.5250	1589.425	122.079
2002/01/13	21:05:32	2.5500	1599.163	122.346
2002/01/13	21:07:02	2.5750	1607.545	122.574
2002/01/13	21:08:32	2.6000	1615.051	122.788
2002/01/13	21:10:02	2.6250	1621.681	122.983
2002/01/13	21:11:32	2.6500	1627.589	123.163
2002/01/13	21:13:02	2.6750	1633.040	123.332
2002/01/13	21:14:32	2.7000	1637.904	123.481



Company Name Pickrell Drilling Co. Inc.
 Well Name Bird "M" #1
 Type of Test DST #2
 Date(s) of Test 1/13/02



Date	Time	Cum. T. 1 (Z43)	Pres 1 (Z43)	Temp 1 (Z43)
		hr	psig	deg F
2002/01/13	21:16:02	2.7250	1642.279	123.622
2002/01/13	21:17:32	2.7500	1646.339	123.748
2002/01/13	21:19:02	2.7750	1650.119	123.868
2002/01/13	21:20:32	2.8000	1653.612	123.980
2002/01/13	21:22:02	2.8250	1656.932	124.084
2002/01/13	21:23:32	2.8500	1659.948	124.182
2002/01/13	21:25:02	2.8750	1662.919	124.264
2002/01/13	21:26:32	2.9000	1665.801	124.340
2002/01/13	21:28:02	2.9250	1668.189	124.416
2002/01/13	21:29:32	2.9500	1670.694	124.480
2002/01/13	21:31:02	2.9750	1673.084	124.538
2002/01/13	21:32:32	3.0000	1675.351	124.599
2002/01/13	21:34:02	3.0250	1677.407	124.653
2002/01/13	21:35:32	3.0500	1679.266	124.702
2002/01/13	21:37:02	3.0750	1681.250	124.745
2002/01/13	21:38:32	3.1000	1683.073	124.792
2002/01/13	21:40:02	3.1250	1684.866	124.826
2002/01/13	21:41:32	3.1500	1686.445	124.866
2002/01/13	21:43:02	3.1750	1688.097	124.905
2002/01/13	21:44:32	3.2000	1689.554	124.943
Initial Buildup				
2002/01/13	21:45:47	3.2208	1690.958	124.966
2002/01/13	21:46:02	3.2250	1666.421	124.974
Final Flow				
2002/01/13	21:47:17	3.2458	132.821	125.128
2002/01/13	21:47:32	3.2500	133.065	125.127
2002/01/13	21:49:02	3.2750	132.929	125.076
2002/01/13	21:50:32	3.3000	132.950	125.044
2002/01/13	21:52:02	3.3250	135.014	125.026
2002/01/13	21:53:32	3.3500	137.535	125.047
2002/01/13	21:55:02	3.3750	139.609	125.078
2002/01/13	21:56:32	3.4000	141.862	125.141
2002/01/13	21:58:02	3.4250	144.230	125.218
2002/01/13	21:59:32	3.4500	146.187	125.301
2002/01/13	22:01:02	3.4750	148.043	125.402
2002/01/13	22:02:32	3.5000	148.745	125.510
2002/01/13	22:04:02	3.5250	149.881	125.627
2002/01/13	22:05:32	3.5500	151.444	125.748
2002/01/13	22:07:02	3.5750	152.988	125.875
2002/01/13	22:08:32	3.6000	154.596	126.012
2002/01/13	22:10:02	3.6250	157.026	126.140
2002/01/13	22:11:32	3.6500	158.573	126.268
2002/01/13	22:13:02	3.6750	159.609	126.401
2002/01/13	22:14:32	3.7000	161.293	126.523
2002/01/13	22:16:02	3.7250	162.708	126.653
2002/01/13	22:17:32	3.7500	165.204	126.779
2002/01/13	22:19:02	3.7750	166.300	126.901
2002/01/13	22:20:32	3.8000	167.512	127.022
2002/01/13	22:22:02	3.8250	168.143	127.139
2002/01/13	22:23:32	3.8500	169.576	127.251



Company Name Pickrell Drilling Co. Inc.
 Well Name Bird "M" #1
 Type of Test DST #2
 Date(s) of Test 1/13/02



Date	Time	Cum. T. 1 (Z43)	Pres 1 (Z43)	Temp 1 (Z43)
		hr	psig	deg F
2002/01/13	22:25:02	3.8750	171.386	127.362
2002/01/13	22:26:32	3.9000	172.047	127.472
2002/01/13	22:28:02	3.9250	173.006	127.575
2002/01/13	22:29:32	3.9500	174.466	127.684
2002/01/13	22:31:02	3.9750	175.632	127.791
2002/01/13	22:32:32	4.0000	176.746	127.890
2002/01/13	22:34:02	4.0250	176.342	127.987
2002/01/13	22:35:32	4.0500	178.377	128.079
2002/01/13	22:37:02	4.0750	179.759	128.176
2002/01/13	22:38:32	4.1000	180.019	128.273
2002/01/13	22:40:02	4.1250	181.943	128.367
2002/01/13	22:41:32	4.1500	183.066	128.449
2002/01/13	22:43:02	4.1750	184.064	128.545
2002/01/13	22:44:32	4.2000	184.548	128.638
Final Flow				
2002/01/13	22:45:32	4.2167	185.767	128.705
2002/01/13	22:46:02	4.2250	291.453	128.703
2002/01/13	22:47:32	4.2500	747.917	128.759
2002/01/13	22:49:02	4.2750	1019.925	128.847
2002/01/13	22:50:32	4.3000	1155.486	128.961
2002/01/13	22:52:02	4.3250	1236.749	129.067
2002/01/13	22:53:32	4.3500	1291.672	129.178
2002/01/13	22:55:02	4.3750	1329.629	129.279
2002/01/13	22:56:32	4.4000	1358.637	129.384
2002/01/13	22:58:02	4.4250	1382.252	129.466
2002/01/13	22:59:32	4.4500	1401.950	129.547
2002/01/13	23:01:02	4.4750	1418.582	129.605
2002/01/13	23:02:32	4.5000	1433.068	129.668
2002/01/13	23:04:02	4.5250	1445.697	129.717
2002/01/13	23:05:32	4.5500	1456.799	129.763
2002/01/13	23:07:02	4.5750	1466.869	129.808
2002/01/13	23:08:32	4.6000	1476.181	129.841
2002/01/13	23:10:02	4.6250	1484.552	129.870
2002/01/13	23:11:32	4.6500	1492.139	129.897
2002/01/13	23:13:02	4.6750	1499.561	129.918
2002/01/13	23:14:32	4.7000	1506.323	129.934
2002/01/13	23:16:02	4.7250	1512.512	129.945
2002/01/13	23:17:32	4.7500	1518.196	129.956
2002/01/13	23:19:02	4.7750	1523.509	129.965
2002/01/13	23:20:32	4.8000	1528.518	129.972
2002/01/13	23:22:02	4.8250	1533.128	129.974
2002/01/13	23:23:32	4.8500	1537.585	129.970
2002/01/13	23:25:02	4.8750	1541.939	129.976
2002/01/13	23:26:32	4.9000	1546.035	129.970
2002/01/13	23:28:02	4.9250	1548.996	129.965
2002/01/13	23:29:32	4.9500	1553.790	129.963
2002/01/13	23:31:02	4.9750	1557.314	129.952
2002/01/13	23:32:32	5.0000	1560.786	129.947
2002/01/13	23:34:02	5.0250	1563.988	129.933
2002/01/13	23:35:32	5.0500	1567.147	129.920



Company Name Pickrell Drilling Co. Inc.
 Well Name Bird "M" #1
 Type of Test DST #2
 Date(s) of Test 1/13/02



Date	Time	Cum. T. 1 (Z43)	Pres 1 (Z43)	Temp 1 (Z43)
		hr	psig	deg F
2002/01/13	23:37:02	5.0750	1570.245	129.913
2002/01/13	23:38:32	5.1000	1573.134	129.904
2002/01/13	23:40:02	5.1250	1575.900	129.891
2002/01/13	23:41:32	5.1500	1578.630	129.879
2002/01/13	23:43:02	5.1750	1581.185	129.862
2002/01/13	23:44:32	5.2000	1583.699	129.855
2002/01/13	23:46:02	5.2250	1586.050	129.837
2002/01/13	23:47:32	5.2500	1588.427	129.830
2002/01/13	23:49:02	5.2750	1590.714	129.819
2002/01/13	23:50:32	5.3000	1592.941	129.808
2002/01/13	23:52:02	5.3250	1595.006	129.794
2002/01/13	23:53:32	5.3500	1597.065	129.787
2002/01/13	23:55:02	5.3750	1599.002	129.772
2002/01/13	23:56:32	5.4000	1601.004	129.763
2002/01/13	23:58:02	5.4250	1602.891	129.756
2002/01/13	23:59:32	5.4500	1604.681	129.751
2002/01/14	00:01:02	5.4750	1606.476	129.736
2002/01/14	00:02:32	5.5000	1608.176	129.729
2002/01/14	00:04:02	5.5250	1609.874	129.720
2002/01/14	00:05:32	5.5500	1611.504	129.711
2002/01/14	00:07:02	5.5750	1613.176	129.704
2002/01/14	00:08:32	5.6000	1614.766	129.693
2002/01/14	00:10:02	5.6250	1616.263	129.691
2002/01/14	00:11:32	5.6500	1617.748	129.679
2002/01/14	00:13:02	5.6750	1619.160	129.677
2002/01/14	00:14:32	5.7000	1620.574	129.672
Final Buildup				
2002/01/14	00:15:02	5.7083	1621.046	129.664
2002/01/14	00:16:02	5.7250	2405.845	129.605
2002/01/14	00:17:32	5.7500	2464.845	129.630
2002/01/14	00:19:02	5.7750	2419.572	129.645
2002/01/14	00:20:32	5.8000	2398.969	129.632
2002/01/14	00:22:02	5.8250	2434.456	129.582
Final HYD				
2002/01/14	00:23:32	5.8500	2459.534	129.457
2002/01/14	00:25:02	5.8750	2421.117	129.272
2002/01/14	00:26:32	5.9000	2390.115	129.049
2002/01/14	00:28:02	5.9250	2358.123	128.833
2002/01/14	00:29:32	5.9500	2446.225	128.590
2002/01/14	00:31:02	5.9750	2409.639	128.264
2002/01/14	00:32:32	6.0000	2383.754	127.830
2002/01/14	00:34:02	6.0250	2336.987	127.326
2002/01/14	00:35:32	6.0500	2193.618	126.766
2002/01/14	00:37:02	6.0750	2265.972	126.124
2002/01/14	00:38:32	6.1000	2218.265	125.420
2002/01/14	00:40:02	6.1250	2184.576	124.549
2002/01/14	00:41:32	6.1500	2140.669	123.559
2002/01/14	00:43:02	6.1750	2093.471	122.603
2002/01/14	00:44:32	6.2000	2048.221	121.681
2002/01/14	00:46:02	6.2250	1896.284	120.771

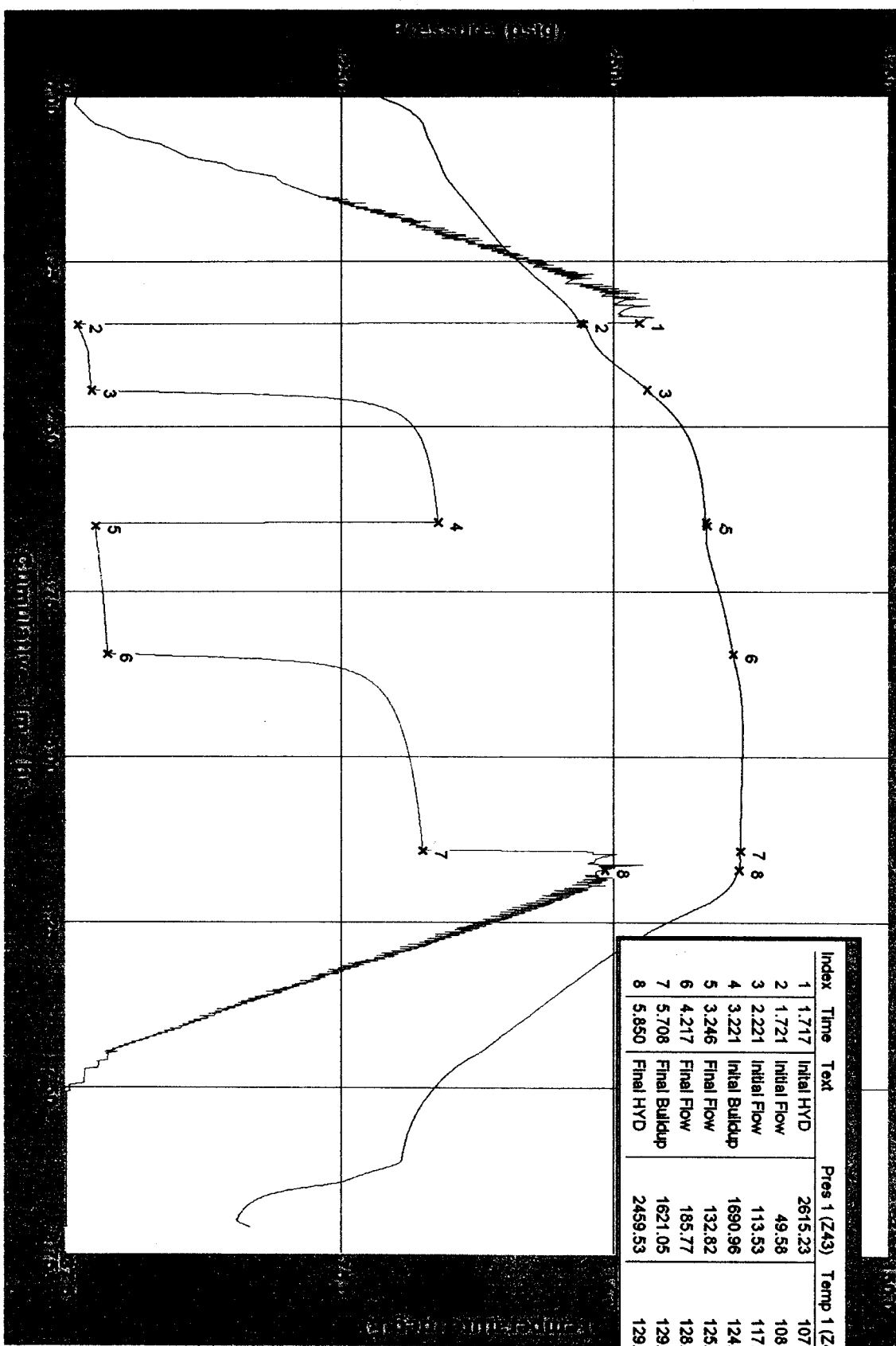


Company Name
Well Name
Type of Test
Date(s) of Test

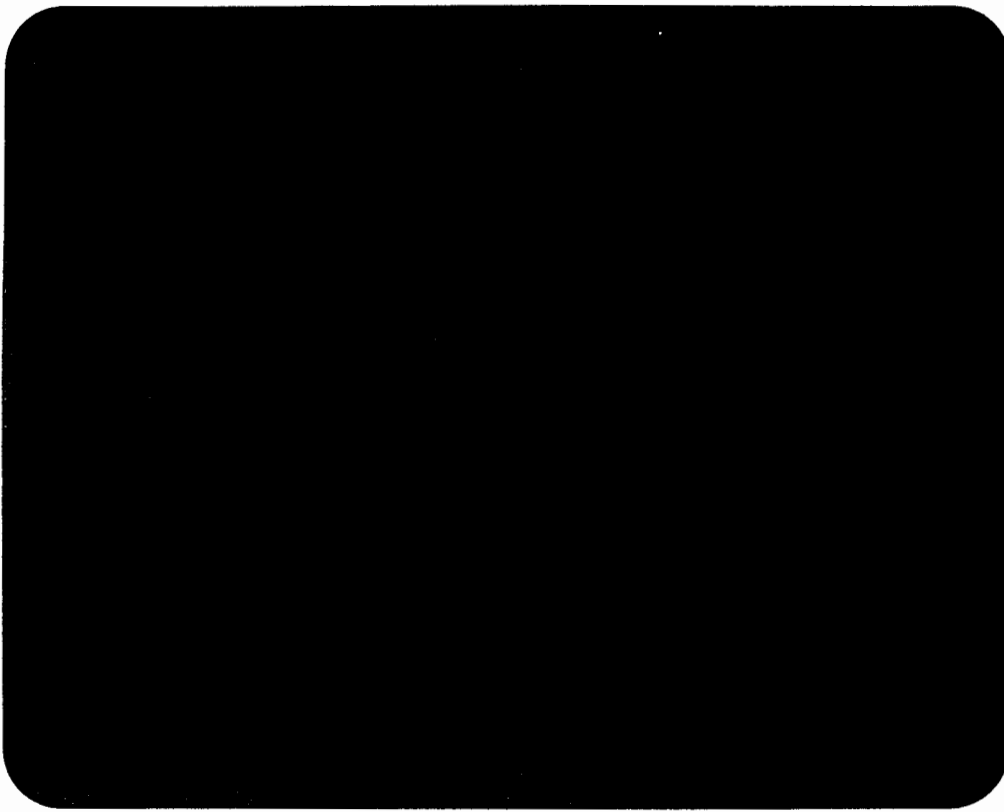
Pickrell Drilling Co. Inc.
Bird "M" #1
DST #2
1/13/02



1/13/02/Bird "M" #1 Copy of Z43 Graph (1)



Index	Time	Text	Pres 1 (Z43)	Temp 1 (Z43)
1	1.717	Initial HYD	2615.23	107.98
2	1.721	Initial Flow	49.58	108.36
3	2.221	Initial Flow	113.53	117.04
4	3.221	Initial Bulldup	1690.96	124.97
5	3.246	Final Flow	132.82	125.13
6	4.217	Final Flow	185.77	128.71
7	5.708	Final Bulldup	1621.05	129.66
8	5.850	Final HYD	2459.53	129.46



This is an actual photograph of recorder chart.

POINT	PRESSURE		PSI
	Field Reading	Office Reading	
(A) Initial Hydrostatic Mud			PSI
(B) First Initial Flow Pressure			PSI
(C) First Final Flow Pressure			PSI
(D) Initial Closed-in Pressure			PSI
(E) Second Initial Flow Pressure			PSI
(F) Second Final Flow Pressure			PSI
(G) Final Closed-in Pressure			PSI
(H) Final Hydrostatic Mud			PSI

Ricketts Testing, Inc.

RECEIVED
KANSAS CORPORATION COMMISSION

#3

MAY 09 2002



CONSERVATION DIVISION

Company PICKRELL DRILLING COMPANY, INC. Lease & Well No. BIRD #1 WICHITA, KS
 Elevation 2153 K.B. Formation ALTAMONT PAWNEE Ticket No. 2-37
 Date 1-15-02 Sec. 32 Twp. 31S Range 19W County COMANCHE State KS
 Test Approved by _____ Ricketts Representative JIM RICKETTS

Formation Test No. 3 Interval Tested from 5050 ft. to 5134 ft. Total Depth 5400 ft.
 Packer Depth 5050 ft. Size 6 3/4 in. Packer Depth 5138 ft. Size 6 3/4 in.
 Packer Depth 5134 ft. Size 6 3/4 in. Packer Depth _____ ft. Size _____ in.
 Depth of Selective Zone Set _____

Top Recorder Depth (Inside) 5055 ft. Recorder Number 13306 Cap. 4625
 Bottom Recorder Depth (Outside) 5058 ft. Recorder Number 243 Cap. 6000
 Below Straddle Recorder Depth 5397 ft. Recorder Number 13307 Cap. 4650

Drilling Contractor PICKRELL DRILLING RIG #1 Drill Collar Length 246 I.D. 2.25 in.
 Mud Type CHEMICAL Viscosity 75 Weight Pipe Length _____ I.D. _____ in.
 Weight 9.1 Water Loss 10.0 cc. Drill Pipe Length 5030 I.D. 3.25 in.
 Chlorides 7600 P.P.M. Test Tool Length 22 ft. Tool Size 5 1/2 in.
 Jars: Make _____ Serial Number _____ Anchor Length 84' W/266' TAILPIPE ft. Size 5 1/2 in.
 Did Well Flow? NO Reversed Out NO Surface Choke Size 3/4 in. Bottom Choke Size 3/4 in.
 Gravity Oil _____ Main Hole Size 7 7/8 in. Tool Joint Size 4 1/2 XH in.

Blow: PACKER FAILURE

Recovered _____ ft. of _____
 Recovered _____ ft. of _____
 Recovered _____ ft. of _____
 Recovered _____ ft. of _____
 Recovered _____ ft. of _____

Remarks: MISRUN - PACKER FAILURE.

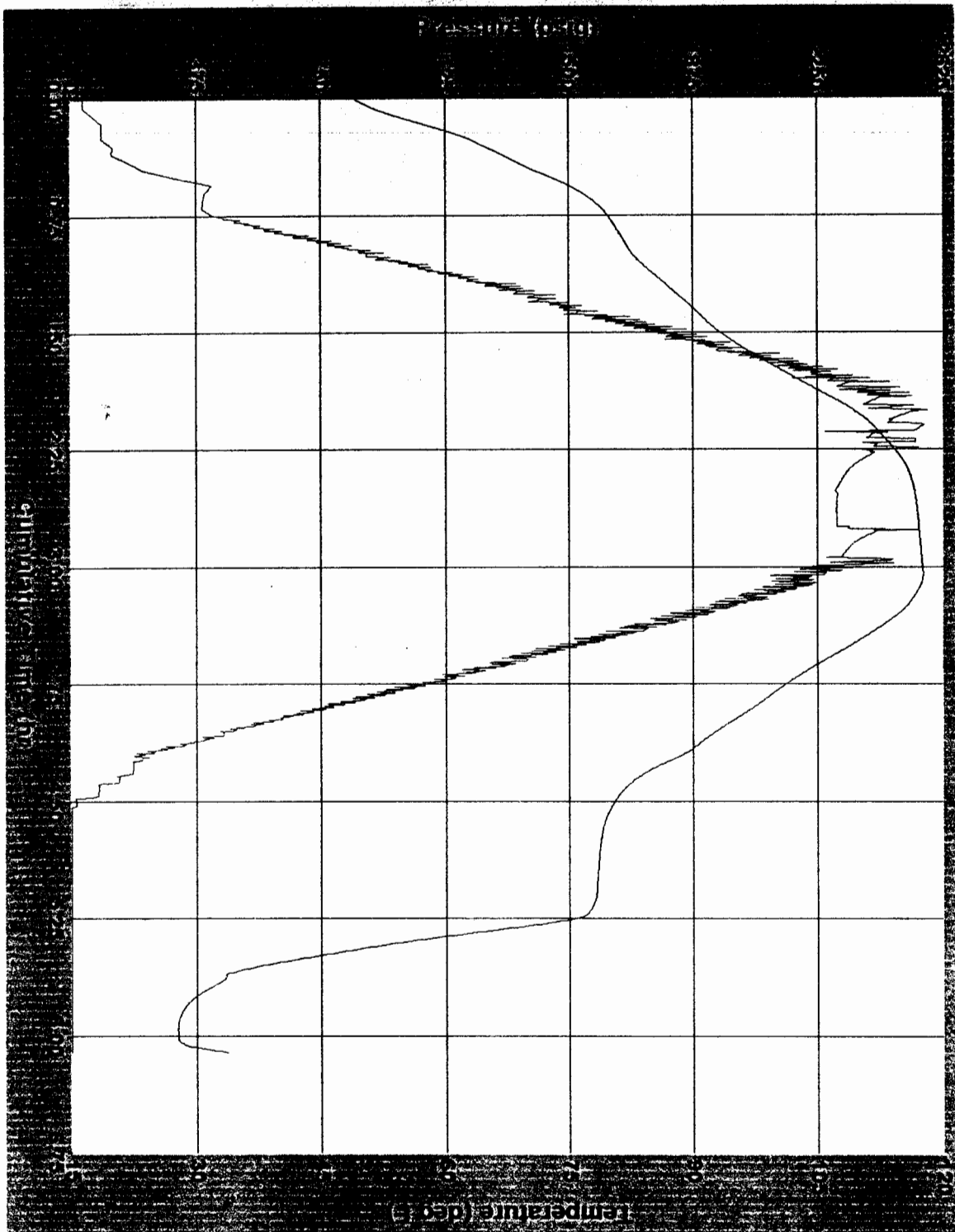
Time Set Packer (s) 4:30 A.M. Time Started Off Bottom 5:00 A.M. Maximum Temperature _____
 Initial Hydrostatic Pressure(A) _____ P.S.I.
 Initial Flow PeriodMinutes _____ (B) _____ P.S.I. to
 (C) _____ P.S.I.
 Initial Closed In PeriodMinutes _____ (D) _____ P.S.I.
 Final Flow PeriodMinutes _____ (E) _____ P.S.I. to
 (F) _____ P.S.I.
 Final Closed In PeriodMinutes _____ (G) _____ P.S.I.
 Final Hydrostatic Pressure(H) _____ P.S.I.



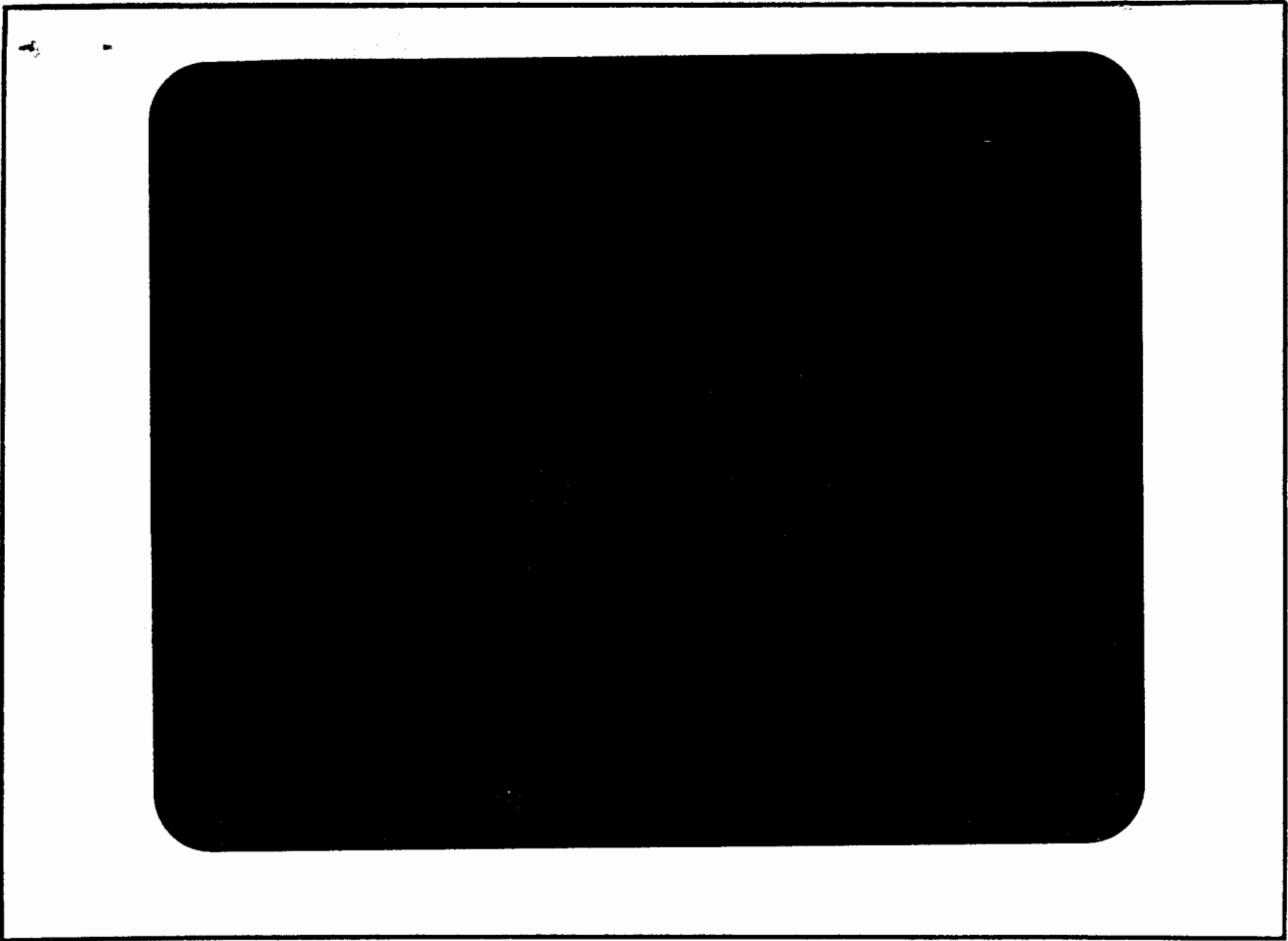
Company Name
Well Name
Type of Test
Date(s) of Test



1-15-01 DST#3 Bird M #1



Pres 1 (Z43)
Temp 1 (Z43)



This is an actual photograph of recorder chart.

POINT	PRESSURE		PSI
	Field Reading	Office Reading	
(A) Initial Hydrostatic Mud			PSI
(B) First Initial Flow Pressure			PSI
(C) First Final Flow Pressure			PSI
(D) Initial Closed-in Pressure			PSI
(E) Second Initial Flow Pressure			PSI
(F) Second Final Flow Pressure			PSI
(G) Final Closed-in Pressure			PSI
(H) Final Hydrostatic Mud			PSI

Ricketts Testing, Inc.

#4
RECEIVED
KANSAS CORPORATION COMMISSION

MAY 09 2002

CONSERVATION DIVISION
WICHITA, KS

Company PICKRELL DRILLING COMPANY, INC. Lease & Well No. BIRD "M" #1
 Elevation 2153 K.B. Formation ALTAMONT AND PAWNEE Ticket No. 2038
 Date 1-15-02 Sec. 32 Twp. 31S Range 19W County COMANCHE State KS
 Test Approved by _____ Ricketts Representative JIM RICKETTS

Formation Test No. 4 Interval Tested from 5061 ft. to 5133 ft. Total Depth 5400 ft.
 Packer Depth 5061 ft. Size 6 3/4 in. Packer Depth 5057 ft. Size 6 3/4 in.
 Packer Depth 5133 ft. Size 6 3/4 in. Packer Depth _____ ft. Size _____ in.
 Depth of Selective Zone Set _____

Top Recorder Depth (Inside) _____	<u>5066</u>	ft.	Recorder Number <u>13306</u>	Cap. <u>4625</u>
Bottom Recorder Depth (Outside) _____	<u>5069</u>	ft.	Recorder Number <u>743</u>	Cap. <u>6000</u>
Below Straddle Recorder Depth _____	<u>5397</u>	ft.	Recorder Number <u>13307</u>	Cap. <u>4650</u>

Drilling Contractor <u>PICKRELL DRILLING RIG #1</u>	Drill Collar Length <u>246</u>	I.D. <u>2.25</u>	in.
Mud Type <u>CHEMICAL</u> Viscosity <u>75</u>	Weight Pipe Length _____	I.D. _____	in.
Weight <u>9.1</u> Water Loss <u>10.0</u> cc.	Drill Pipe Length <u>5041</u>	I.D. <u>3.25</u>	in.
Chlorides <u>7600</u> P.P.M.	Test Tool Length <u>22</u>	ft. Tool Size. <u>5 1/2</u>	in.
Jars: Make _____ Serial Number _____	Anchor Length <u>73' W/265' TAIL PIPE</u>	ft. Size <u>5 1/2</u>	in.
Did Well Flow? <u>NO</u> Reversed Out <u>NO</u>	Surface Choke Size <u>3/4</u>	in. Bottom Choke Size <u>3/4</u>	in.
Gravity Oil _____	Main Hole Size <u>7 7/8</u>	in. Tool Joint Size <u>4 1/2 XH</u>	in.

Blow: WEAK BLOW BUILDING TO A STRONG BLOW IN 20 MINUTES INITIAL FLOW PERIOD.
WEAK BLOW BUILDING TO A STRONG BLOW IN 20 MINUTES FINAL FLOW PERIOD.

Recovered 270 ft. of MUD CUT WATER WITH A SLIGHT SHOW OF OIL
 Recovered _____ ft. of _____
 Recovered _____ ft. of _____
 Recovered _____ ft. of _____
 Recovered _____ ft. of _____

Remarks: DST FLUID CHLORIDES 33,000 PPM

Time Set Packer (s)	M.	Time Started Off Bottom	M.	Maximum Temperature
Initial Hydrostatic Pressure	(A)	<u>2549</u>		P.S.I.
Initial Flow Period	Minutes	<u>30</u>	(B)	<u>26</u> P.S.I. to
			(C)	<u>79</u> P.S.I.
Initial Closed In Period	Minutes	<u>60</u>	(D)	<u>1550</u> P.S.I.
Final Flow Period	Minutes	<u>60</u>	(E)	<u>87</u> P.S.I. to
			(F)	<u>126</u> P.S.I.
Final Closed In Period	Minutes	<u>90</u>	(G)	<u>1524</u> P.S.I.
Final Hydrostatic Pressure	(H)	<u>2395</u>		P.S.I.

Pressure Test Report

COMPANY INFORMATION

Company Name Pickrell Drilling Co. Inc.
Representative
Phone
Fax
Address

E-Mail Address
Service Company

WELL INFORMATION

Well Name Bird M #1 DST#4
Well Location 32-31S-19E NE SW SE
Field and Pool Bean
Status (Oil, Gas, Water, Injection) Oil& Gas
Perforated Intervals
Mid-point of Perforated Intervals (MPP)
Drilling Rig Number Prickell Drlg. Rig #1
Elevations
 Kelly Bushing (KB) 2153 Kb
 Casing Flange (CF)
 KB-CF
 Ground Level
Plug Back Total Depth
Total Depth 5400'
Production Casing
Production Tubing

TEST INFORMATION

Type of Test DST#4
Date(s) of Test 1-15-02
Dead-weight Gauge Tubing Pressure
Dead-weight Gauge Casing Pressure
Shut-in Date (Duration)
Date / Time on Bottom 10:45 AM
Date / Time off Bottom 2:45 Pm

Probe Serial Number Z43
Probe Offset from End of Tool String
Run Depth at Probe Pressure Port

PRESSURE TEST RESULTS

Maximum Recorded Probe Pressure 2611.1 psig
Maximum Recorded Probe Temperature 122.4 deg F
Final Buildup Pressure
Gradient Survey Information
 Extrapolated Pressure to MPP
 Final Gradient at Depth
Job Number



Company Name Pickrell Drilling Co. Inc.
 Well Name Bird M #1 DST#4
 Type of Test DST#4
 Date(s) of Test 1-15-02



PROBE INFORMATION

Probe Serial Number Z43
 Model Level II
 Pressure
 Calibrated Pressure Range 0.0 - 6000.0 psig
 Accuracy 0.05% FS
 Resolution 0.0015% FS
 Temperature
 Calibrated Temperature Range -2.7 - 303.7 deg F
 Accuracy 0.25% FS
 Resolution 0.002% FS
 Calibration File Used for Reports Z43DE26A.CAL

PROGRAMMING DETAILS

<u>Step</u>	<u>Sample Mode</u>	<u>Period</u>	<u>Duration</u>	<u>Comment</u>
0	Pause	5 seconds	25 seconds	Test mode
1	Pressure Trigger	30 seconds	indefinite	Trig @ 20 psi
2	Normal	3 minutes	45 minutes	
3	Overrun	15 seconds	end of memory	Fill remaining memory

Program Start Time Jan 15/2002 @ 09:11:15
 Program End Time Jan 15/2002 @ 17:42:45
 Total Samples Taken 1882
 Usage for this Test 0.0670 Ah
 Generic Data File Name Z43JA15A.GEN



Company Name Pickrell Drilling Co. Inc.
Well Name Bird M #1 DST#4
Type of Test DST#4
Date(s) of Test 1-15-02



COMMENTS

Reported By

James Ricketts

Weak blow building to syrong in 20 MINS. Recover 270' mud cut water with show of oil



Company Name Pickrell Drilling Co. Inc.
Well Name Bird M #1 DST#4
Type of Test DST#4
Date(s) of Test 1-15-02



Date	Time	Cum. T. 1 (Z43)	Pres 1 (Z43)	Temp 1 (Z43)
		hr	psig	deg F
2002/01/15	14:18:45	5.1250	1432.915	122.083
2002/01/15	14:20:15	5.1500	1439.448	122.090
2002/01/15	14:21:45	5.1750	1445.687	122.104
2002/01/15	14:23:15	5.2000	1451.799	122.117
2002/01/15	14:24:45	5.2250	1457.741	122.122
2002/01/15	14:26:15	5.2500	1463.631	122.133
2002/01/15	14:27:45	5.2750	1469.206	122.140
2002/01/15	14:29:15	5.3000	1474.559	122.155
2002/01/15	14:30:45	5.3250	1479.753	122.164
2002/01/15	14:32:15	5.3500	1484.812	122.173
2002/01/15	14:33:45	5.3750	1489.717	122.180
2002/01/15	14:35:15	5.4000	1494.452	122.191
2002/01/15	14:36:45	5.4250	1499.081	122.203
2002/01/15	14:38:15	5.4500	1503.563	122.212
2002/01/15	14:39:45	5.4750	1507.937	122.220
2002/01/15	14:41:15	5.5000	1512.183	122.236
2002/01/15	14:42:45	5.5250	1516.298	122.245
2002/01/15	14:44:15	5.5500	1520.211	122.248
Final Buildup				
2002/01/15	14:45:45	5.5750	1524.113	122.263
2002/01/15	14:47:15	5.6000	2422.029	122.216
Final HYD				
2002/01/15	14:48:00	5.6125	2385.679	122.245
2002/01/15	14:48:45	5.6250	2364.315	122.270
2002/01/15	14:50:15	5.6500	2346.422	122.306
2002/01/15	14:51:45	5.6750	2331.521	122.328
2002/01/15	14:53:15	5.7000	2321.821	122.344
2002/01/15	14:54:45	5.7250	2314.605	122.351
2002/01/15	14:56:15	5.7500	2308.106	122.351
2002/01/15	14:57:45	5.7750	2403.408	122.335
2002/01/15	14:59:15	5.8000	2219.078	122.335
2002/01/15	15:00:45	5.8250	2354.822	122.306
2002/01/15	15:02:15	5.8500	2300.644	122.286
2002/01/15	15:03:45	5.8750	2126.302	122.270
2002/01/15	15:05:15	5.9000	2059.268	122.243
2002/01/15	15:06:45	5.9250	2146.646	122.187
2002/01/15	15:08:15	5.9500	1996.339	122.128
2002/01/15	15:09:45	5.9750	2059.108	122.023
2002/01/15	15:11:15	6.0000	1901.785	121.906
2002/01/15	15:12:45	6.0250	1981.366	121.741
2002/01/15	15:14:15	6.0500	1937.792	121.554
2002/01/15	15:15:45	6.0750	1792.433	121.329
2002/01/15	15:17:15	6.1000	1850.633	121.060
2002/01/15	15:18:45	6.1250	1697.874	120.771
2002/01/15	15:20:15	6.1500	1768.741	120.436
2002/01/15	15:21:45	6.1750	1624.989	120.094
2002/01/15	15:23:15	6.2000	1670.986	119.718
2002/01/15	15:24:45	6.2250	1614.380	119.314
2002/01/15	15:26:15	6.2500	1586.604	118.899
2002/01/15	15:27:45	6.2750	1533.904	118.458



Company Name Pickrell Drilling Co. Inc.
 Well Name Bird M #1 DST#4
 Type of Test DST#4
 Date(s) of Test 1-15-02



Date	Time	Cum. T. 1 (Z43)	Pres 1 (Z43)	Temp 1 (Z43)
		hr	psig	deg F
2002/01/15	10:45:45	1.5750	2545.516	104.769
Initial Flow				
2002/01/15	10:46:30	1.5875	26.596	105.438
2002/01/15	10:47:15	1.6000	32.277	105.723
2002/01/15	10:48:45	1.6250	36.265	106.286
2002/01/15	10:50:15	1.6500	37.851	106.842
2002/01/15	10:51:45	1.6750	41.391	107.379
2002/01/15	10:53:15	1.7000	44.641	107.906
2002/01/15	10:54:45	1.7250	47.474	108.405
2002/01/15	10:56:15	1.7500	50.197	108.896
2002/01/15	10:57:45	1.7750	53.048	109.369
2002/01/15	10:59:15	1.8000	55.236	109.836
2002/01/15	11:00:45	1.8250	57.939	110.280
2002/01/15	11:02:15	1.8500	60.074	110.709
2002/01/15	11:03:45	1.8750	62.164	111.132
2002/01/15	11:05:15	1.9000	64.088	111.533
2002/01/15	11:06:45	1.9250	66.374	111.916
2002/01/15	11:08:15	1.9500	68.161	112.289
2002/01/15	11:09:45	1.9750	70.176	112.647
2002/01/15	11:11:15	2.0000	72.327	112.989
2002/01/15	11:12:45	2.0250	73.434	113.313
2002/01/15	11:14:15	2.0500	75.605	113.625
2002/01/15	11:15:45	2.0750	77.110	113.936
2002/01/15	11:17:15	2.1000	78.934	114.219
Initial Flow				
2002/01/15	11:17:45	2.1083	79.536	114.309
2002/01/15	11:18:45	2.1250	118.833	114.472
2002/01/15	11:20:15	2.1500	209.269	114.715
2002/01/15	11:21:45	2.1750	345.175	114.928
2002/01/15	11:23:15	2.2000	511.207	115.155
2002/01/15	11:24:45	2.2250	665.555	115.394
2002/01/15	11:26:15	2.2500	788.501	115.628
2002/01/15	11:27:45	2.2750	884.126	115.857
2002/01/15	11:29:15	2.3000	959.787	116.083
2002/01/15	11:30:45	2.3250	1021.597	116.303
2002/01/15	11:32:15	2.3500	1072.987	116.499
2002/01/15	11:33:45	2.3750	1117.123	116.692
2002/01/15	11:35:15	2.4000	1155.321	116.868
2002/01/15	11:36:45	2.4250	1188.946	117.046
2002/01/15	11:38:15	2.4500	1219.114	117.207
2002/01/15	11:39:45	2.4750	1246.319	117.358
2002/01/15	11:41:15	2.5000	1271.119	117.502
2002/01/15	11:42:45	2.5250	1293.847	117.631
2002/01/15	11:44:15	2.5500	1314.965	117.761
2002/01/15	11:45:45	2.5750	1334.502	117.887
2002/01/15	11:47:15	2.6000	1352.766	118.011
2002/01/15	11:48:45	2.6250	1369.787	118.121
2002/01/15	11:50:15	2.6500	1385.800	118.216
2002/01/15	11:51:45	2.6750	1400.687	118.321
2002/01/15	11:53:15	2.7000	1414.802	118.411



Company Name Pickrell Drilling Co. Inc.
Well Name Bird M #1 DST#4
Type of Test DST#4
Date(s) of Test 1-15-02



Date	Time	Cum. T. 1 (Z43)	Pres 1 (Z43)	Temp 1 (Z43)
		hr	psig	deg F
2002/01/15	11:54:45	2.7250	1428.031	118.506
2002/01/15	11:56:15	2.7500	1440.550	118.593
2002/01/15	11:57:45	2.7750	1452.382	118.675
2002/01/15	11:59:15	2.8000	1463.876	118.755
2002/01/15	12:00:45	2.8250	1474.527	118.832
2002/01/15	12:02:15	2.8500	1484.741	118.906
2002/01/15	12:03:45	2.8750	1494.416	118.974
2002/01/15	12:05:15	2.9000	1503.551	119.039
2002/01/15	12:06:45	2.9250	1512.240	119.106
2002/01/15	12:08:15	2.9500	1520.533	119.165
2002/01/15	12:09:45	2.9750	1528.502	119.226
2002/01/15	12:11:15	3.0000	1536.006	119.277
2002/01/15	12:12:45	3.0250	1543.265	119.336
2002/01/15	12:14:15	3.0500	1550.095	119.386
Initial Buildup				
2002/01/15	12:15:45	3.0750	1550.838	119.440
Final Flow				
2002/01/15	12:16:30	3.0875	87.653	119.647
2002/01/15	12:17:15	3.1000	89.973	119.647
2002/01/15	12:18:45	3.1250	89.106	119.631
2002/01/15	12:20:15	3.1500	94.952	119.610
2002/01/15	12:21:45	3.1750	97.781	119.601
2002/01/15	12:23:15	3.2000	99.887	119.606
2002/01/15	12:24:45	3.2250	101.800	119.615
2002/01/15	12:26:15	3.2500	103.406	119.631
2002/01/15	12:27:45	3.2750	105.935	119.658
2002/01/15	12:29:15	3.3000	106.961	119.683
2002/01/15	12:30:45	3.3250	108.760	119.721
2002/01/15	12:32:15	3.3500	110.393	119.757
2002/01/15	12:33:45	3.3750	109.420	119.804
2002/01/15	12:35:15	3.4000	113.345	119.851
2002/01/15	12:36:45	3.4250	114.752	119.892
2002/01/15	12:38:15	3.4500	114.116	119.941
2002/01/15	12:39:45	3.4750	113.517	119.988
2002/01/15	12:41:15	3.5000	114.863	120.040
2002/01/15	12:42:45	3.5250	114.497	120.087
2002/01/15	12:44:15	3.5500	114.841	120.133
2002/01/15	12:45:45	3.5750	114.925	120.178
2002/01/15	12:47:15	3.6000	116.479	120.231
2002/01/15	12:48:45	3.6250	116.794	120.276
2002/01/15	12:50:15	3.6500	117.373	120.317
2002/01/15	12:51:45	3.6750	118.637	120.367
2002/01/15	12:53:15	3.7000	118.936	120.412
2002/01/15	12:54:45	3.7250	119.421	120.461
2002/01/15	12:56:15	3.7500	120.042	120.508
2002/01/15	12:57:45	3.7750	120.399	120.549
2002/01/15	12:59:15	3.8000	120.948	120.598
2002/01/15	13:00:45	3.8250	121.476	120.641
2002/01/15	13:02:15	3.8500	121.907	120.682
2002/01/15	13:03:45	3.8750	122.563	120.729



Company Name Pickrell Drilling Co. Inc.
Well Name Bird M #1 DST#4
Type of Test DST#4
Date(s) of Test 1-15-02



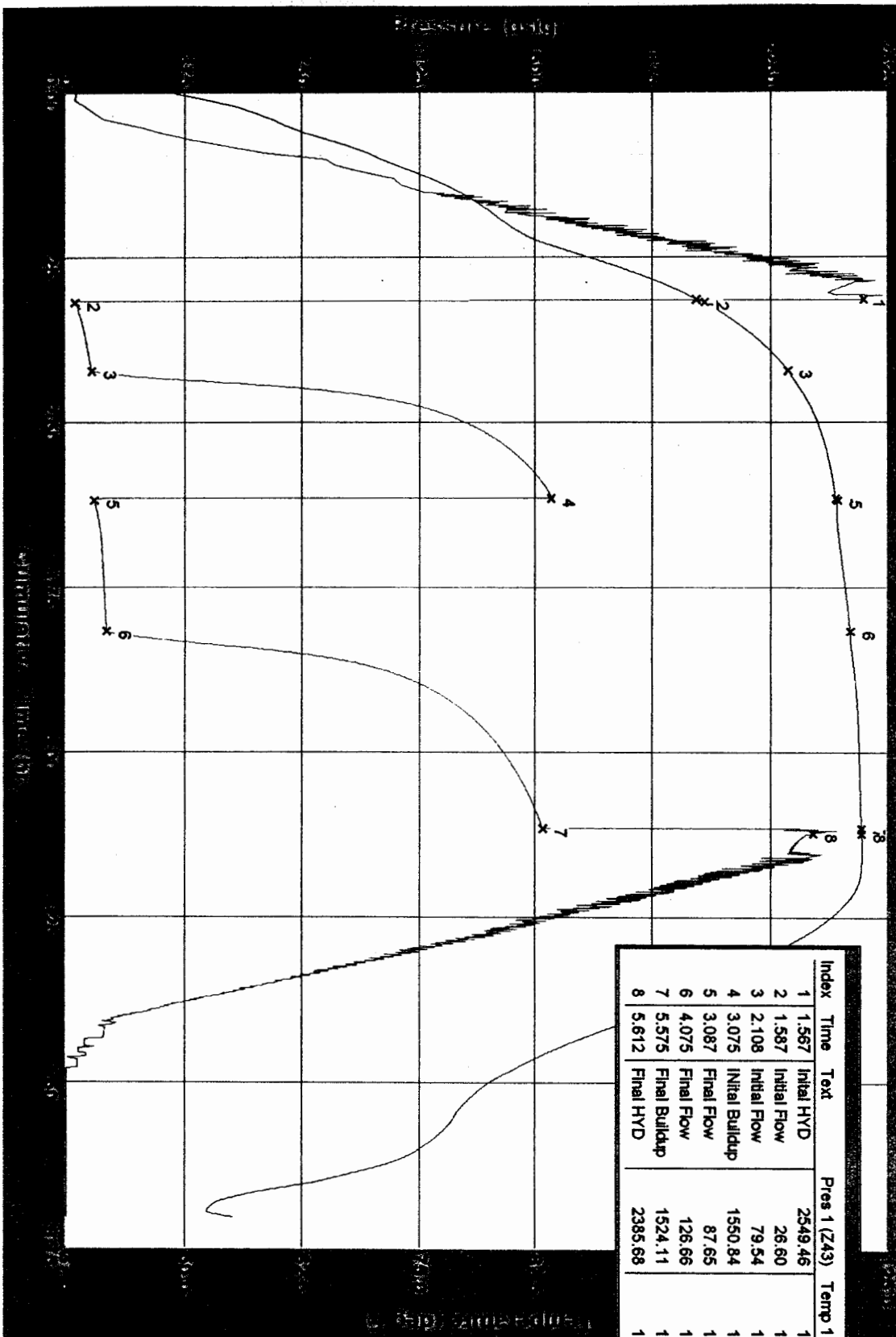
Date	Time	Cum. T. 1 (Z43)	Pres 1 (Z43)	Temp 1 (Z43)
		hr	psig	deg F
2002/01/15	13:05:15	3.9000	122.832	120.769
2002/01/15	13:06:45	3.9250	123.457	120.810
2002/01/15	13:08:15	3.9500	123.821	120.850
2002/01/15	13:09:45	3.9750	124.586	120.893
2002/01/15	13:11:15	4.0000	125.132	120.929
2002/01/15	13:12:45	4.0250	125.779	120.965
2002/01/15	13:14:15	4.0500	126.149	121.001
Final Flow				
2002/01/15	13:15:45	4.0750	126.665	121.039
2002/01/15	13:17:15	4.1000	162.886	121.059
2002/01/15	13:18:45	4.1250	235.458	121.071
2002/01/15	13:20:15	4.1500	327.467	121.098
2002/01/15	13:21:45	4.1750	435.550	121.131
2002/01/15	13:23:15	4.2000	547.800	121.165
2002/01/15	13:24:45	4.2250	651.391	121.213
2002/01/15	13:26:15	4.2500	740.021	121.255
2002/01/15	13:27:45	4.2750	814.173	121.305
2002/01/15	13:29:15	4.3000	875.581	121.354
2002/01/15	13:30:45	4.3250	926.828	121.402
2002/01/15	13:32:15	4.3500	970.525	121.444
2002/01/15	13:33:45	4.3750	1008.503	121.491
2002/01/15	13:35:15	4.4000	1041.582	121.525
2002/01/15	13:36:45	4.4250	1070.895	121.563
2002/01/15	13:38:15	4.4500	1097.464	121.600
2002/01/15	13:39:45	4.4750	1121.696	121.631
2002/01/15	13:41:15	4.5000	1143.823	121.663
2002/01/15	13:42:45	4.5250	1164.177	121.689
2002/01/15	13:44:15	4.5500	1183.064	121.716
2002/01/15	13:45:45	4.5750	1200.730	121.741
2002/01/15	13:47:15	4.6000	1217.294	121.766
2002/01/15	13:48:45	4.6250	1233.030	121.789
2002/01/15	13:50:15	4.6500	1247.798	121.811
2002/01/15	13:51:45	4.6750	1261.865	121.831
2002/01/15	13:53:15	4.7000	1275.210	121.852
2002/01/15	13:54:45	4.7250	1287.953	121.872
2002/01/15	13:56:15	4.7500	1300.051	121.890
2002/01/15	13:57:45	4.7750	1311.678	121.905
2002/01/15	13:59:15	4.8000	1322.820	121.921
2002/01/15	14:00:45	4.8250	1333.377	121.937
2002/01/15	14:02:15	4.8500	1343.715	121.951
2002/01/15	14:03:45	4.8750	1353.536	121.966
2002/01/15	14:05:15	4.9000	1362.854	121.977
2002/01/15	14:06:45	4.9250	1371.889	121.991
2002/01/15	14:08:15	4.9500	1380.540	122.005
2002/01/15	14:09:45	4.9750	1388.853	122.020
2002/01/15	14:11:15	5.0000	1396.936	122.034
2002/01/15	14:12:45	5.0250	1404.630	122.045
2002/01/15	14:14:15	5.0500	1412.079	122.054
2002/01/15	14:15:45	5.0750	1419.299	122.063
2002/01/15	14:17:15	5.1000	1426.221	122.076



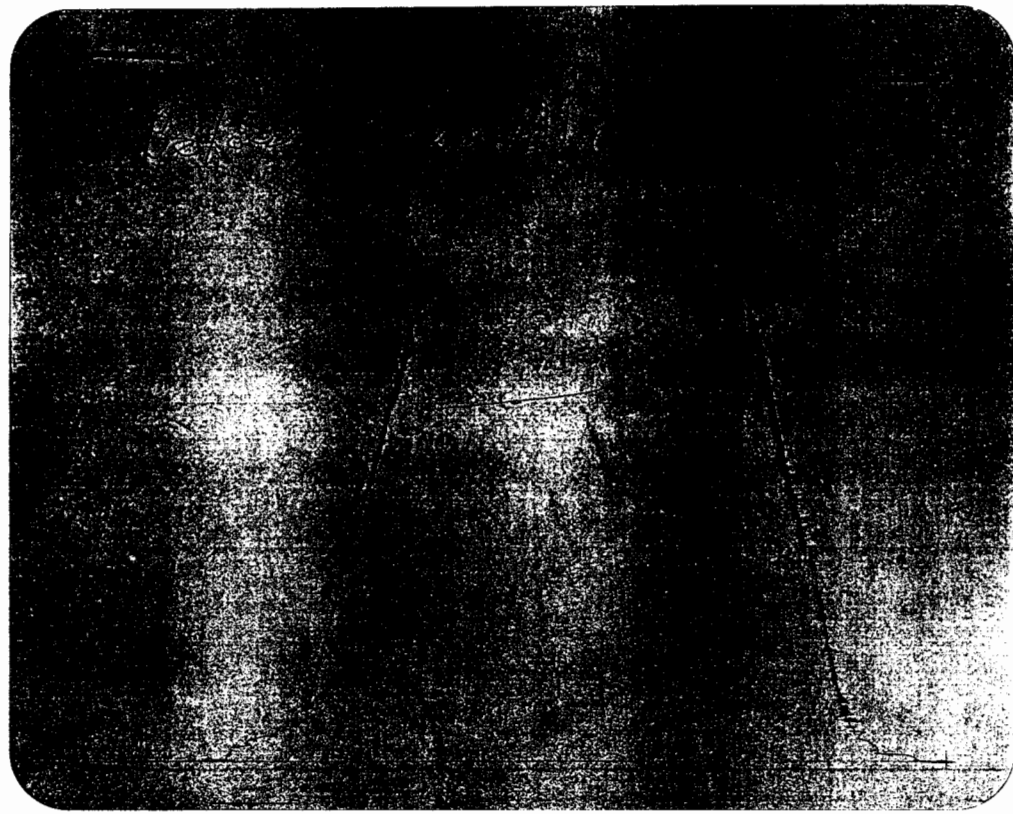
Company Name Pickrell Drilling Co. Inc.
 Well Name Bird M #1 DST#4
 Type of Test DST#4
 Date(s) of Test 1-15-02



1-15-02 DST#4 Bird M #1



Index	Time	Text	Pres 1 (Z43)	Temp 1 (Z43)
1	1.567	Initial HYD	2549.46	104.55
2	1.587	Initial Flow	26.60	105.44
3	2.108	Initial Flow	79.54	114.31
4	3.075	Initial Buildup	1550.84	119.44
5	3.087	Final Flow	87.65	119.65
6	4.075	Final Flow	126.66	121.04
7	5.575	Final Buildup	1524.11	122.26
8	5.612	Final HYD	2385.68	122.24



This is an actual photograph of recorder chart.

POINT	PRESSURE		PSI
	Field Reading	Office Reading	
(A) Initial Hydrostatic Mud			PSI
(B) First Initial Flow Pressure			PSI
(C) First Final Flow Pressure			PSI
(D) Initial Closed-in Pressure			PSI
(E) Second Initial Flow Pressure			PSI
(F) Second Final Flow Pressure			PSI
(G) Final Closed-in Pressure			PSI
(H) Final Hydrostatic Mud			PSI