

DST REPORT

GENERAL INFORMATION

DATE : 6/7/96
CUSTOMER : TRANS PACIFIC OIL CORP
WELL : #2-27 TEST: 1
ELEVATION:
SECTION : 27
RANGE : 39W COUNTY: STEVENS
GAUGE SN#: 6234 RANGE : 4500
TICKET : 22012
LEASE : SWALAR CO
GEOLOGIST: CHRISTENSEN
FORMATION: UPPER MORROW SAND
TOWNSHIP : 31S
STATE : KS
CLOCK : 12

WELL INFORMATION

PERFORATION INTERVAL FROM: 5381.00 ft TO: 5496.00 ft TVD: 5496.0 ft
DEPTH OF SELECTIVE ZONE: TEST TYPE: GAS
DEPTH OF RECORDERS: 5384.0 ft 5490.0 ft
TEMPERATURE: 128.0
DRILL COLLAR LENGTH: 730.0 ft I.D.: 2.200 in
WEIGHT PIPE LENGTH : 0.0 ft I.D.: 0.000 in
DRILL PIPE LENGTH : 4625.0 ft I.D.: 3.800 in
TEST TOOL LENGTH : 26.0 ft TOOL SIZE : 5.500 in
ANCHOR LENGTH : 115.0 ft ANCHOR SIZE: 5.500 in
SURFACE CHOKE SIZE : 0.750 in BOTTOM CHOKE SIZE: 0.750 in
MAIN HOLE SIZE : 7.875 in TOOL JOINT SIZE : 4.5XH
PACKER DEPTH: 5376.0 ft SIZE: 6.630 in
PACKER DEPTH: 5381.0 ft SIZE: 6.630 in
PACKER DEPTH: 0.0 ft SIZE: 0.000 in
PACKER DEPTH: 0.0 ft SIZE: 0.000 in

MUD INFORMATION

DRILLING CON. : BEREDCO DRLG RIG 4
MUD TYPE : CHEMICAL VISCOSITY : 55.00 cp
WEIGHT : 9.000 ppg WATER LOSS: 10.400 cc
CHLORIDES : 500 ppm
JARS-MAKE : WTC SERIAL NUMBER: 12369
DID WELL FLOW?: NO REVERSED OUT?: NO

COMMENTS

Comment

INITIAL FLOW PERIOD STRONG BLOW - GAS TO SURFACE
IN 2 MINUTES. FINAL FLOW PERIOD GAS TO SURFACE
THROUGHOUT.

DST REPORT (CONTINUED)

COMMENTS (CONTINUED)

Comment

SEE GAS SHEET.

FLUID RECOVERY

Feet of Fluid	% Oil	% Gas	% Water	% Mud	Comments
500.0	0.0	10.0	0.0	90.0	GAS CUT MUD NO WATER

RATE INFORMATION

OIL VOLUME:	0.0000	STB	
GAS VOLUME:	1.3199	SCF	
MUD VOLUME:	2.1156	STB	
WATER VOLUME:	0.0000	STB	
TOTAL FLUID :	2.1156	STB	
			TOTAL FLOW TIME: 75.0000 min.
			AVERAGE OIL RATE: 0.0000 STB/D
			AVERAGE WATER RATE: 0.0000 STB/D

FIELD TIME & PRESSURE INFORMATION

INITIAL HYDROSTATIC PRESSURE: 2550.00

Description	Duration	p1	p End
INITIAL FLOW	30.00	625.00	625.00
INITIAL SHUT-IN	60.00		625.00
FINAL FLOW	45.00	625.00	625.00
FINAL SHUT-IN	90.00		625.00

FINAL HYDROSTATIC PRESSURE: 2500.00

DST REPORT (CONTINUED)

OFFICE TIME & PRESSURE INFORMATION

INITIAL HYDROSTATIC PRESSURE: 2590.00

<u>Description</u>	<u>Duration</u>	<u>p1</u>	<u>p End</u>
INITIAL FLOW	30.00	663.06	652.00
INITIAL SHUT-IN	60.00		651.38
FINAL FLOW	45.00	651.37	651.07
FINAL SHUT-IN	90.00		649.49

FINAL HYDROSTATIC PRESSURE: 2538.00

GAS FLOW REPORT

GENERAL INFORMATION

DATE : 6/7/96	TICKET : 22012
CUSTOMER : TRANS PACIFIC OIL CORP	LEASE : SWALAR CO
WELL : #2-27 TEST: 1	GEOLOGIST: CHRISTENSEN
ELEVATION:	FORMATION: UPPER MORROW SAND
SECTION : 27	TOWNSHIP : 31S
RANGE : 39W COUNTY: STEVENS	STATE : KS
GAUGE SN#: 6234 RANGE : 4500	CLOCK : 12

PRE FLOW

Time Guage (min)	Tester Type	Orifice Size	Pressure	Flow Desc.
10 MIN	MERLA	1.250	20 PSIG	1233000 SCF/D
20 MIN	MERLA	1.250	33 PSIG	1729000 SCF/D
30 MIN	MERLA	1.250	37 PSIG	1872000 SCF/D

SECOND FLOW

Time Guage (min)	Tester Type	Orifice Size	Pressure	Flow Desc.
5 MIN	MERLA	1.250	30 PSIG	1612000 SCF/D
15 MIN	MERLA	1.250	36 PSIG	1836000 SCF/D
25 MIN	MERLA	1.250	40 PSIG	1980000 SCF/D
35 MIN	MERLA	1.250	41 PSIG	2028000 SCF/D
45 MIN	MERLA	1.250	41 PSIG	2028000 SCF/D

Company: TRANS PACIFIC OIL CORP
Well: #2-27 SWALAR DST 1
Field: TKT 22012

[Friday: June 7, 1996]
Page 1

REC #	DAY	REAL TIME	DT (HRS)	BHP (PSIA)

START FLOW 1				
1	0	2:11:50	0.0000	663.06
10	0	2:12:55	0.0180	660.22
19	0	2:13:59	0.0359	658.32
28	0	2:15: 4	0.0539	658.29
37	0	2:16: 9	0.0719	654.51
46	0	2:17:13	0.0899	653.55
55	0	2:18:18	0.1078	652.58
64	0	2:19:23	0.1258	652.55
73	0	2:20:28	0.1438	652.53
82	0	2:21:32	0.1618	651.56
91	0	2:22:37	0.1798	651.53
100	0	2:23:42	0.1978	651.50
109	0	2:24:47	0.2157	651.48
118	0	2:25:51	0.2337	651.45
127	0	2:26:56	0.2517	651.42
136	0	2:28: 1	0.2697	651.39
145	0	2:29: 6	0.2877	651.37
154	0	2:30:10	0.3057	651.34
163	0	2:31:15	0.3237	652.25
172	0	2:32:20	0.3417	652.22
181	0	2:33:25	0.3596	652.19
190	0	2:34:29	0.3776	652.17
199	0	2:35:34	0.3956	652.14
208	0	2:36:39	0.4136	652.11
217	0	2:37:44	0.4316	652.08
226	0	2:38:48	0.4496	652.05
235	0	2:39:53	0.4675	652.03
244	0	2:40:58	0.4855	652.00
END FLOW 1				
START SHUTIN 1				
253	0	2:42: 3	0.5035	651.97
262	0	2:43: 7	0.5215	651.94
271	0	2:44:12	0.5395	651.92
280	0	2:45:17	0.5575	651.89
289	0	2:46:22	0.5755	651.86
298	0	2:47:26	0.5934	651.83
307	0	2:48:31	0.6114	651.80
316	0	2:49:36	0.6294	651.78
325	0	2:50:41	0.6474	651.75
334	0	2:51:45	0.6654	651.72
343	0	2:52:50	0.6834	651.69
352	0	2:53:55	0.7013	651.67
361	0	2:54:59	0.7193	651.64
370	0	2:56: 4	0.7373	651.61
379	0	2:57: 9	0.7553	651.58
388	0	2:58:14	0.7733	651.56
397	0	2:59:18	0.7913	651.53
406	0	3: 0:23	0.8092	651.50
415	0	3: 1:28	0.8272	651.47
424	0	3: 2:33	0.8452	651.44
433	0	3: 3:37	0.8632	651.42
442	0	3: 4:42	0.8812	651.39
451	0	3: 5:47	0.8992	651.36
460	0	3: 6:52	0.9172	651.33

WESTERN TESTING CO., INC.

Company: TRANS PACIFIC OIL CORP
Well: #2-27 SWALAR DST 1
Field: TKT 22012

[Friday: June 7, 1996]
Page 2

REC #	DAY	REAL TIME	DT (HRS)	BHP (PSIA)
469	0	3: 7:56	0.9352	651.31
478	0	3: 9: 1	0.9531	651.28
487	0	3:10: 6	0.9711	651.25
496	0	3:11:11	0.9891	651.22
505	0	3:12:15	1.0071	651.20
514	0	3:13:20	1.0251	651.17
523	0	3:14:25	1.0431	651.14
532	0	3:15:30	1.0610	651.11
541	0	3:16:34	1.0790	651.08
550	0	3:17:39	1.0970	651.06
559	0	3:18:44	1.1150	651.03
568	0	3:19:49	1.1330	651.00
577	0	3:20:53	1.1510	650.97
586	0	3:21:58	1.1690	650.95
595	0	3:23: 3	1.1869	650.92
604	0	3:24: 8	1.2049	651.83
613	0	3:25:12	1.2229	651.80
622	0	3:26:17	1.2409	651.77
631	0	3:27:22	1.2589	651.74
640	0	3:28:27	1.2769	651.72
649	0	3:29:31	1.2948	651.69
658	0	3:30:36	1.3128	651.66
667	0	3:31:41	1.3308	651.63
676	0	3:32:46	1.3488	651.61
685	0	3:33:50	1.3668	651.58
694	0	3:34:55	1.3848	651.55
703	0	3:36: 0	1.4028	651.52
712	0	3:37: 5	1.4208	651.50
721	0	3:38: 9	1.4387	651.47
730	0	3:39:14	1.4567	651.44
739	0	3:40:19	1.4747	651.41
748	0	3:41:24	1.4927	651.38
		END SHUTIN 1		
		START FLOW 2		
753	0	3:42: 0	1.5027	651.37
757	0	3:42:28	1.5107	651.36
766	0	3:43:33	1.5287	651.33
775	0	3:44:38	1.5466	651.30
784	0	3:45:43	1.5646	651.27
793	0	3:46:47	1.5826	651.25
802	0	3:47:52	1.6006	650.28
811	0	3:48:57	1.6186	650.25
820	0	3:50: 2	1.6366	650.22
829	0	3:51: 6	1.6545	650.20
838	0	3:52:11	1.6725	650.17
847	0	3:53:16	1.6905	650.14
856	0	3:54:21	1.7085	650.11
865	0	3:55:25	1.7265	650.09
874	0	3:56:30	1.7445	650.06
883	0	3:57:35	1.7624	650.03
892	0	3:58:39	1.7804	650.00
901	0	3:59:44	1.7984	650.91
910	0	4: 0:49	1.8164	650.89
919	0	4: 1:54	1.8344	649.92
928	0	4: 2:58	1.8524	649.89

WESTERN TESTING CO., INC.

Company: TRANS PACIFIC OIL CORP
 Well: #2-27 SWALAR DST 1
 Field: TKT 22012

[Friday: June 7, 1996]
 Page 3

REC #	DAY	REAL TIME	DT (HRS)	BHP (PSIA)
937	0	4: 4: 3	1.8704	649.86
946	0	4: 5: 8	1.8884	649.84
955	0	4: 6:13	1.9063	649.81
964	0	4: 7:17	1.9243	649.78
973	0	4: 8:22	1.9423	649.75
982	0	4: 9:27	1.9603	649.73
991	0	4:10:32	1.9783	649.70
1000	0	4:11:36	1.9963	649.67
1009	0	4:12:41	2.0142	649.64
1018	0	4:13:46	2.0322	650.55
1027	0	4:14:51	2.0502	650.52
1036	0	4:15:55	2.0682	650.50
1045	0	4:17: 0	2.0862	650.47
1054	0	4:18: 5	2.1042	650.44
1063	0	4:19:10	2.1222	650.41
1072	0	4:20:14	2.1401	650.39
1081	0	4:21:19	2.1581	650.36
1090	0	4:22:24	2.1761	650.33
1099	0	4:23:29	2.1941	650.30
1108	0	4:24:33	2.2121	651.21
1117	0	4:25:38	2.2301	651.19
1126	0	4:26:43	2.2481	651.16
1135	0	4:27:48	2.2660	651.13
1144	0	4:28:52	2.2840	651.10
1153	0	4:29:57	2.3020	651.07
		END FLOW 2		
		START SHUTIN 2		
1162	0	4:31: 2	2.3200	651.05
1171	0	4:32: 7	2.3380	651.02
1180	0	4:33:11	2.3560	650.99
1189	0	4:34:16	2.3740	650.96
1198	0	4:35:21	2.3919	650.94
1207	0	4:36:26	2.4099	650.91
1216	0	4:37:30	2.4279	650.88
1225	0	4:38:35	2.4459	650.85
1234	0	4:39:40	2.4639	650.82
1243	0	4:40:45	2.4819	650.80
1252	0	4:41:49	2.4999	650.77
1261	0	4:42:54	2.5178	650.74
1270	0	4:43:59	2.5358	650.71
1279	0	4:45: 4	2.5538	650.69
1288	0	4:46: 8	2.5718	650.66
1297	0	4:47:13	2.5898	650.63
1306	0	4:48:18	2.6078	650.60
1315	0	4:49:23	2.6257	650.58
1324	0	4:50:27	2.6437	650.55
1333	0	4:51:32	2.6617	650.52
1342	0	4:52:37	2.6797	650.49
1351	0	4:53:42	2.6977	650.46
1360	0	4:54:46	2.7157	649.50
1369	0	4:55:51	2.7336	649.47
1378	0	4:56:56	2.7516	649.44
1387	0	4:58: 1	2.7696	649.42
1396	0	4:59: 5	2.7876	649.39
1405	0	5: 0:10	2.8056	650.30

WESTERN TESTING CO., INC.

Company: TRANS PACIFIC OIL CORP
Well: #2-27 SWALAR DST 1
Field: TKT 22012

[Friday: June 7, 1996]
Page 4

REC #	DAY	REAL TIME	DT (HRS)	BHP (PSIA)
1414	0	5: 1:15	2.8236	650.27
1423	0	5: 2:20	2.8416	650.24
1432	0	5: 3:24	2.8595	650.21
1441	0	5: 4:29	2.8775	650.19
1450	0	5: 5:34	2.8955	650.16
1459	0	5: 6:39	2.9135	650.13
1468	0	5: 7:43	2.9315	651.04
1477	0	5: 8:48	2.9495	651.01
1486	0	5: 9:53	2.9675	650.99
1495	0	5:10:58	2.9855	650.96
1504	0	5:12: 2	3.0034	650.93
1513	0	5:13: 7	3.0214	650.90
1522	0	5:14:12	3.0394	650.88
1531	0	5:15:17	3.0574	650.85
1540	0	5:16:21	3.0754	650.82
1549	0	5:17:26	3.0934	650.79
1558	0	5:18:31	3.1113	650.76
1567	0	5:19:35	3.1293	650.74
1576	0	5:20:40	3.1473	650.71
1585	0	5:21:45	3.1653	650.68
1594	0	5:22:50	3.1833	650.65
1603	0	5:23:54	3.2013	650.63
1612	0	5:24:59	3.2192	650.60
1621	0	5:26: 4	3.2372	650.57
1630	0	5:27: 9	3.2552	650.54
1639	0	5:28:13	3.2732	650.51
1648	0	5:29:18	3.2912	650.49
1657	0	5:30:23	3.3092	650.46
1666	0	5:31:28	3.3272	650.43
1675	0	5:32:32	3.3451	650.40
1684	0	5:33:37	3.3631	650.38
1693	0	5:34:42	3.3811	650.35
1702	0	5:35:47	3.3991	650.32
1711	0	5:36:51	3.4171	649.36
1720	0	5:37:56	3.4351	649.33
1729	0	5:39: 1	3.4531	649.30
1738	0	5:40: 6	3.4710	649.27
1747	0	5:41:10	3.4890	650.18
1756	0	5:42:15	3.5070	650.15
1765	0	5:43:20	3.5250	650.13
1774	0	5:44:25	3.5430	650.10
1783	0	5:45:29	3.5610	650.07
1792	0	5:46:34	3.5789	650.04
1801	0	5:47:39	3.5969	650.02
1810	0	5:48:44	3.6149	649.99
1819	0	5:49:48	3.6329	649.96
1828	0	5:50:53	3.6509	649.93
1837	0	5:51:58	3.6689	649.90
1846	0	5:53: 3	3.6869	649.88
1855	0	5:54: 7	3.7048	649.85
1864	0	5:55:12	3.7228	649.82
1873	0	5:56:17	3.7408	649.79
1882	0	5:57:22	3.7588	649.77
1891	0	5:58:26	3.7768	649.74
1900	0	5:59:31	3.7948	649.71

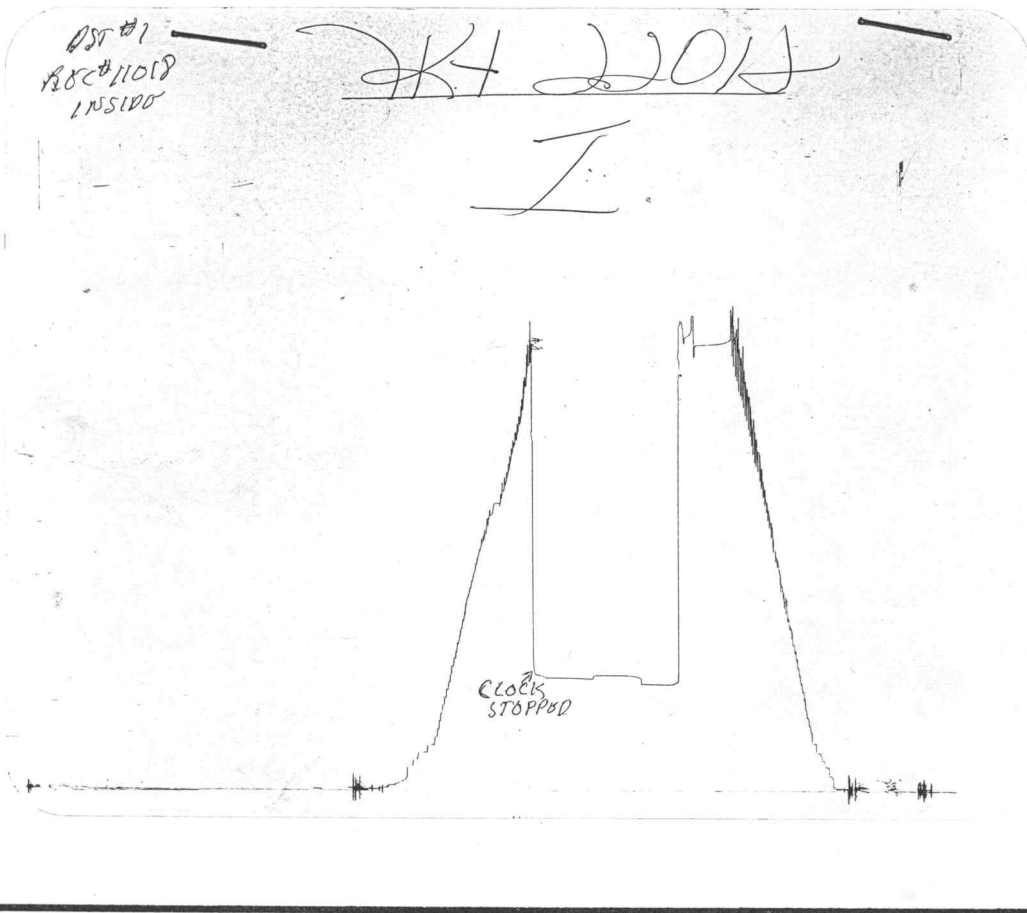
WESTERN TESTING CO., INC.

Company: TRANS PACIFIC OIL CORP
Well: #2-27 SWALAR DST 1
Field: TKT 22012

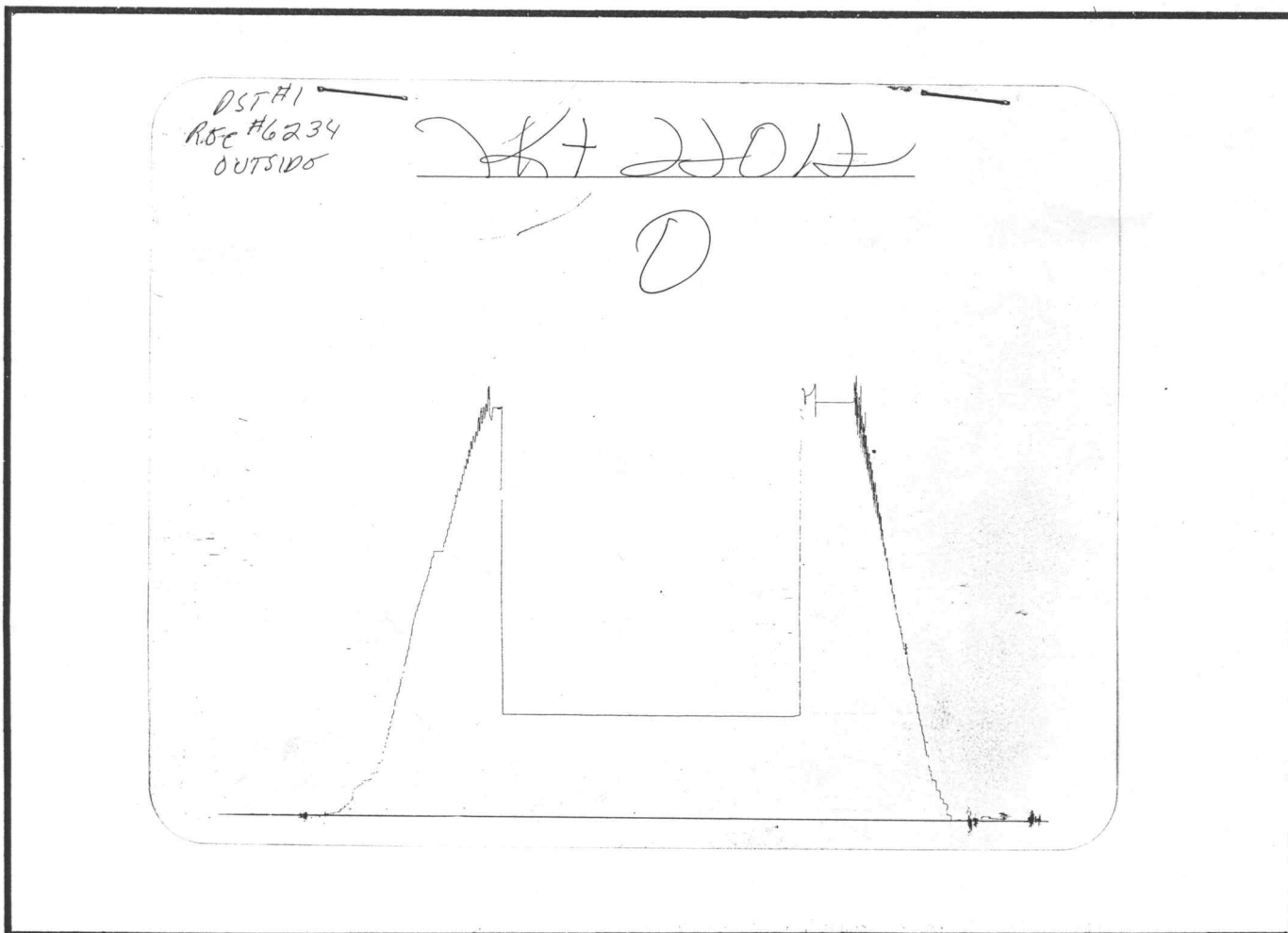
[Friday: June 7, 1996]
Page 5

REC #	DAY	REAL TIME	DT (HRS)	BHP (PSIA)
1909	0	6: 0:36	3.8128	649.68
1918	0	6: 1:41	3.8307	649.66
1927	0	6: 2:45	3.8487	649.63
1936	0	6: 3:50	3.8667	649.60
1945	0	6: 4:55	3.8847	649.57
1954	0	6: 6: 0	3.9027	649.54
1963	0	6: 7: 4	3.9207	649.52
1972	0	6: 8: 9	3.9387	649.49

WESTERN TESTING CO., INC.



Inside Recorder



Outside Recorder

DST REPORT

GENERAL INFORMATION

DATE : 6/8/96
CUSTOMER : TRANS PACIFIC OIL CORP
WELL : #2-27 TEST: 2
ELEVATION: 3235 KB
SECTION : 27
RANGE : 39W COUNTY: STEVENS
GAUGE SN#: 11018 RANGE : 4425
TICKET : 22013
LEASE : SWALAR CO
GEOLOGIST: CHRISTENSEN
FORMATION: LOWER MORROW SAND
TOWNSHIP : 31S
STATE : KS
CLOCK : 12

WELL INFORMATION

PERFORATION INTERVAL FROM: 5770.00 ft TO: 5840.00 ft TVD: 5840.0 ft
DEPTH OF SELECTIVE ZONE: TEST TYPE: GAS
DEPTH OF RECORDERS: 5773.0 ft 5837.0 ft
TEMPERATURE: 130.0
DRILL COLLAR LENGTH: 590.0 ft I.D.: 2.200 in
WEIGHT PIPE LENGTH : 0.0 ft I.D.: 0.000 in
DRILL PIPE LENGTH : 5154.0 ft I.D.: 3.800 in
TEST TOOL LENGTH : 26.0 ft TOOL SIZE : 5.500 in
ANCHOR LENGTH : 70.0 ft ANCHOR SIZE: 5.500 in
SURFACE CHOKE SIZE : 0.750 in BOTTOM CHOKE SIZE: 0.750 in
MAIN HOLE SIZE : 7.875 in TOOL JOINT SIZE : 4.5XH
PACKER DEPTH: 5765.0 ft SIZE: 6.630 in
PACKER DEPTH: 5770.0 ft SIZE: 6.630 in
PACKER DEPTH: 0.0 ft SIZE: 0.000 in
PACKER DEPTH: 0.0 ft SIZE: 0.000 in

MUD INFORMATION

DRILLING CON. : BEREDCO DRLG RIG 4
MUD TYPE : CHEMICAL VISCOSITY : 54.00 cp
WEIGHT : 9.100 ppg WATER LOSS: 9.500 cc
CHLORIDES : 1200 ppm
JARS-MAKE : WTC SERIAL NUMBER: 12369
DID WELL FLOW?: NO REVERSED OUT?: NO

COMMENTS

Comment

INITIAL FLOW EPRIOD WEAK BLOW - DEAD IN 5 MINUTES.
FINAL FLOW PERIOD NO BLOW - FLUSHED TOOL AND
RECEIVED WEAK BLOW - DEAD IN 2 MINUTES.

DST REPORT (CONTINUED)

FLUID RECOVERY

Feet of Fluid	% Oil	% Gas	% Water	% Mud	Comments
30.0	0.0	0.0	0.0	100.0	DRILLING MUD

RATE INFORMATION

OIL VOLUME:	0.0000 STB		TOTAL FLOW TIME:	60.0000 min.
GAS VOLUME:	0.0000 SCF		AVERAGE OIL RATE:	0.0000 STB/D
MUD VOLUME:	0.1410 STB		AVERAGE WATER RATE:	0.0000 STB/D
WATER VOLUME:	0.0000 STB			
TOTAL FLUID :	0.1410 STB			

FIELD TIME & PRESSURE INFORMATION

INITIAL HYDROSTATIC PRESSURE: 2770.00

Description	Duration	p1	p End
INITIAL FLOW	30.00	66.00	74.00
INITIAL SHUT-IN	30.00		177.00
FINAL FLOW	30.00	78.00	86.00
FINAL SHUT-IN	30.00		90.00

FINAL HYDROSTATIC PRESSURE: 2724.00

OFFICE TIME & PRESSURE INFORMATION

INITIAL HYDROSTATIC PRESSURE: 2810.00

Description	Duration	p1	p End
INITIAL FLOW	30.00	100.75	131.59
INITIAL SHUT-IN	30.00		187.46
FINAL FLOW	30.00	189.27	100.73
FINAL SHUT-IN	30.00		103.80

FINAL HYDROSTATIC PRESSURE: 2738.00

Company: TRANS PACIFIC OIL CORP
Well: #2-27 SWALAR DST 2
Field: TKT 22013

[Saturday: June 8, 1996]
Page 1

REC #	DAY	REAL TIME	DT (HRS)	BHP (PSIA)
		START FLOW 1		
1	0	12:45:12	0.0000	100.75
8	0	12:46: 3	0.0140	100.71
17	0	12:47: 7	0.0319	95.10
26	0	12:48:12	0.0499	94.12
35	0	12:49:16	0.0678	91.29
44	0	12:50:21	0.0858	89.38
53	0	12:51:26	0.1037	85.63
62	0	12:52:30	0.1217	84.65
71	0	12:53:35	0.1396	82.74
80	0	12:54:40	0.1576	82.69
89	0	12:55:44	0.1756	82.63
98	0	12:56:49	0.1936	83.50
107	0	12:57:54	0.2116	85.30
116	0	12:58:59	0.2296	88.02
125	0	13: 0: 4	0.2476	88.89
134	0	13: 1: 9	0.2656	90.68
143	0	13: 2:13	0.2837	93.40
152	0	13: 3:18	0.3017	94.27
161	0	13: 4:23	0.3197	97.92
170	0	13: 5:28	0.3377	99.71
179	0	13: 6:33	0.3557	102.43
188	0	13: 7:38	0.3737	104.23
197	0	13: 8:43	0.3918	107.87
206	0	13: 9:48	0.4098	111.52
215	0	13:10:52	0.4279	115.16
224	0	13:11:57	0.4459	119.73
233	0	13:13: 2	0.4640	124.30
242	0	13:14: 7	0.4820	127.95
251	0	13:15:12	0.5000	131.59
		END FLOW 1		
		START SHUTIN 1		
253	0	13:15:27	0.5040	132.51
260	0	13:16:17	0.5181	133.39
269	0	13:17:22	0.5361	136.11
278	0	13:18:27	0.5541	139.75
287	0	13:19:32	0.5721	141.55
296	0	13:20:37	0.5901	144.27
305	0	13:21:42	0.6082	146.99
314	0	13:22:46	0.6262	148.78
323	0	13:23:51	0.6442	150.58
332	0	13:24:56	0.6622	152.37
341	0	13:26: 1	0.6802	155.09
350	0	13:27: 6	0.6983	157.81
359	0	13:28:11	0.7163	160.53
368	0	13:29:16	0.7343	162.33
377	0	13:30:21	0.7523	165.05
386	0	13:31:25	0.7703	165.92
395	0	13:32:30	0.7883	166.79
404	0	13:33:35	0.8063	168.58
413	0	13:34:40	0.8243	170.38
422	0	13:35:45	0.8424	173.10
431	0	13:36:50	0.8604	174.89
440	0	13:37:54	0.8783	174.84
449	0	13:38:59	0.8964	177.56

WESTERN TESTING CO., INC.

Company: TRANS PACIFIC OIL CORP
 Well: #2-27 SWALAR DST 2
 Field: TKT 22013

[Saturday: June 8, 1996]
 Page 2

REC #	DAY	REAL TIME	DT (HRS)	BHP (PSIA)
458	0	13:40: 4	0.9144	180.28
467	0	13:41: 9	0.9324	181.15
476	0	13:42:14	0.9504	182.94
485	0	13:43:19	0.9684	184.74
494	0	13:44:23	0.9864	187.46
		END SHUTIN 1		
		START FLOW 2		
500	0	13:45: 7	0.9985	189.27
503	0	13:45:28	1.0045	190.18
512	0	13:46:33	1.0225	191.05
		FLUSHED TOOL		
520	0	13:48: 1	1.0468	771.98
524	0	13:49: 8	1.0656	1511.13
529	0	13:50:14	1.0839	2094.86
552	0	13:51:16	1.1011	96.44
561	0	13:52:21	1.1190	93.61
570	0	13:53:25	1.1370	91.70
579	0	13:54:30	1.1549	90.72
588	0	13:55:35	1.1729	88.81
597	0	13:56:39	1.1909	87.83
606	0	13:57:44	1.2088	87.78
615	0	13:58:49	1.2268	86.80
624	0	13:59:53	1.2448	86.74
		FLUSHED TOOL		
630	0	14: 1:12	1.2667	778.71
634	0	14: 3: 6	1.2982	2404.13
641	0	14: 4: 6	1.3151	2603.92
653	0	14: 5: 8	1.3323	2134.80
676	0	14: 6: 9	1.3490	106.78
685	0	14: 7:13	1.3669	103.95
694	0	14: 8:18	1.3849	102.04
703	0	14: 9:23	1.4029	101.98
712	0	14:10:27	1.4209	101.00
721	0	14:11:32	1.4388	100.95
730	0	14:12:37	1.4568	100.89
739	0	14:13:42	1.4748	100.84
748	0	14:14:46	1.4928	100.78
757	0	14:15:51	1.5108	100.73
		END FLOW 2		
		START SHUTIN 2		
758	0	14:15:58	1.5128	100.72
766	0	14:16:56	1.5288	100.67
775	0	14:18: 1	1.5468	100.62
784	0	14:19: 5	1.5647	100.56
793	0	14:20:10	1.5827	100.51
802	0	14:21:15	1.6007	100.45
811	0	14:22:19	1.6187	100.40
820	0	14:23:24	1.6367	100.34
829	0	14:24:29	1.6546	99.36
838	0	14:25:34	1.6726	99.30
847	0	14:26:38	1.6906	99.25
856	0	14:27:43	1.7086	99.19
865	0	14:28:48	1.7266	99.14
874	0	14:29:53	1.7446	99.08
883	0	14:30:57	1.7625	99.03

Company: TRANS PACIFIC OIL CORP
Well: #2-27 SWALAR DST 2
Field: TKT 22013

[Saturday: June 8, 1996]
Page 3

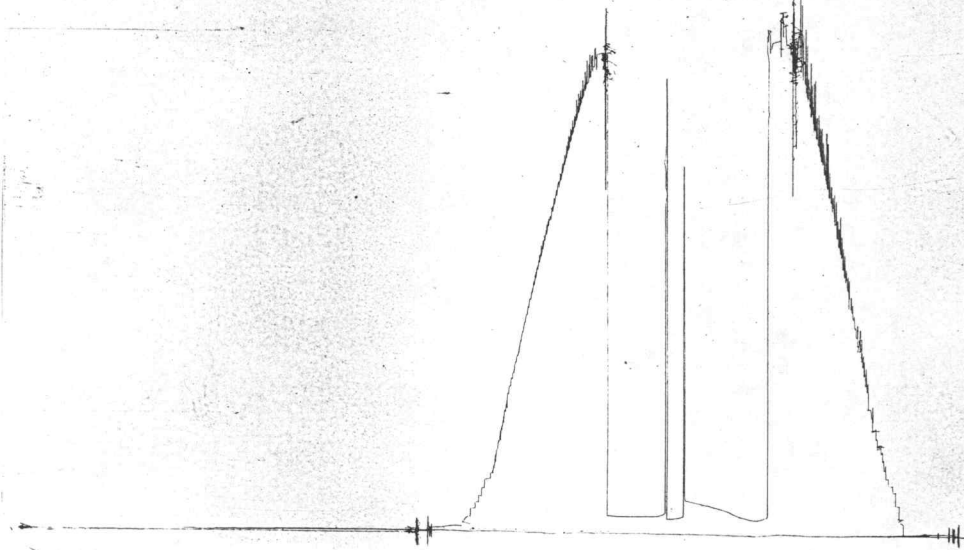
REC #	DAY	REAL TIME	DT (HRS)	BHP (PSIA)
892	0	14:32: 2	1.7805	98.97
901	0	14:33: 7	1.7985	99.84
910	0	14:34:12	1.8165	99.79
919	0	14:35:16	1.8345	99.73
928	0	14:36:21	1.8525	99.68
937	0	14:37:26	1.8705	99.62
946	0	14:38:31	1.8885	99.57
955	0	14:39:35	1.9064	99.51
964	0	14:40:40	1.9244	100.38
973	0	14:41:45	1.9424	101.25
982	0	14:42:50	1.9604	101.19
991	0	14:43:55	1.9784	102.99
1000	0	14:44:59	1.9964	103.86
1009	0	14:46: 4	2.0144	103.80

WESTERN TESTING CO., INC.

DST # 2
REC # 11518
INSIDE

KT JDR

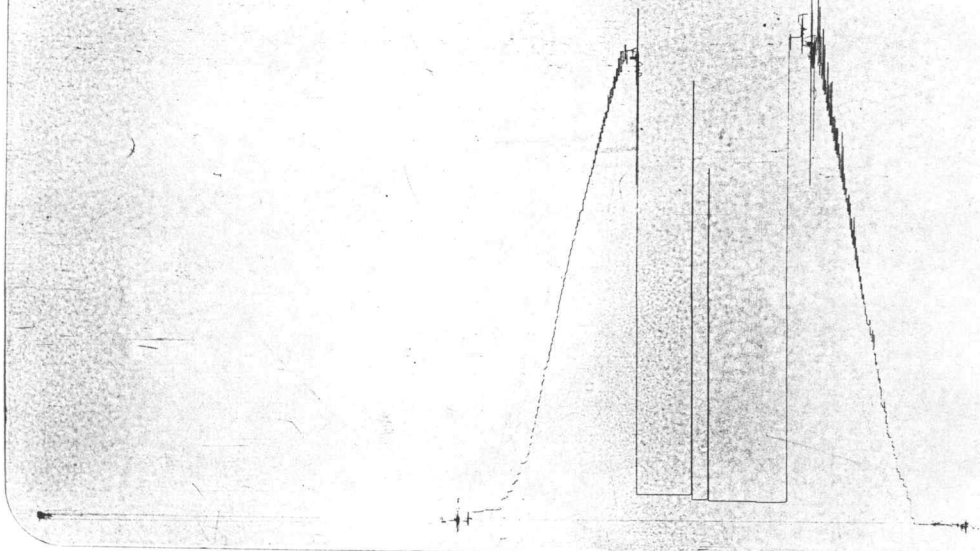
I



Inside Recorder

KT JDR

O



Outside Recorder