



Home Office: Wichita, Kansas 67201

P.O. Box 1599

(316) 262-5861

Company J.A. Allison

Lease & Well No. Travis "OWWO" #1

Elevation 1271 Kelly Bush. Formation Kansas City Effective Pay - Ft. Ticket No. 4827

Date 3-14-80 Sec. 29 Twp. 31S Range 3W County Sumner State Kansas

Test Approved by Delbert J. Costa Western Representative W.K. Hager

Formation Test No. 1 Interval Tested from 3442 ft. to 3462 ft. Total Depth 3462 ft.

Packer Depth 3437 ft. Size 6 3/4 in. Packer Depth - ft. Size - in.

Packer Depth 3442 ft. Size 6 3/4 in. Packer Depth - ft. Size - in.

Depth of Selective Zone Set -

Top Recorder Depth (Inside) 3449 ft. Recorder Number 1559 Cap 4200

Bottom Recorder Depth (Outside) 3452 ft. Recorder Number 1558 Cap 4200

Below Straddle Recorder Depth - ft. Recorder Number - Cap -

Drilling Contractor Gabbert-Jones (#8) Drill Collar Length 431 I. D. 2 1/4 in.

Mud Type Premix Viscosity 43 Weight Pipe Length - I. D. - in.

Weight 9.8 Water Loss NC cc. Drill Pipe Length 2991 I. D. 3.8 in.

Chlorides 48,000 P.P.M. Test Tool Length 40 ft. Tool Size 5 1/2 in.

Jars: Make - Serial Number - Anchor Length 20 ft. Size 5 1/2 in.

Did Well Flow? No Reversed Out - Surface Choke Size 3/4 in. Bottom Choke Size 3/4 in.

Main Hole Size 7 7/8 in. Tool Joint Size 4 1/2 FH in.

Blow: Very weak blow on initial flow period. Weak blow on final flow period.

Recovered 40 ft. of slightly oil cut mud

Recovered - ft. of -

Recovered - ft. of -

Recovered - ft. of -

Recovered - ft. of -

Remarks: -

Time Set Packer(s) 1:00 ~~A.M.~~ P.M. Time Started Off Bottom 4:00 ~~A.M.~~ P.M. Maximum Temperature 116

Initial Hydrostatic Pressure (A) 1704 P.S.I.

Initial Flow Period Minutes 45 (B) 1 P.S.I. to (C) 2 P.S.I.

Initial Closed In Period Minutes 54 (D) 102 P.S.I.

Final Flow Period Minutes 45 (E) 71 P.S.I. to (F) 19 P.S.I.

Final Closed In Period Minutes 39 (G) 52 P.S.I.

Final Hydrostatic Pressure (H) 1683 P.S.I.

**WESTERN TESTING CO., INC.**  
**Pressure Data**

3-14-80  
Date

Test Ticket No. 4827

Recorder No. 1559

Capacity 4200

Location 3449

Clock No. - Elevation 1271 Kelly Bushing

Well Temperature 116

Point	Pressure		Time Given	Time Computed
A Initial Hydrostatic Mud	1704	P.S.I.	1:00P.	M
B First Initial Flow Pressure	1	P.S.I.	45	45
C First Final Flow Pressure	2	P.S.I.	45	54
D Initial Closed-in Pressure	102	P.S.I.	45	45
E Second Initial Flow Pressure	71	P.S.I.	45	39
F Second Final Flow Pressure	19	P.S.I.		
G Final Closed-in Pressure	52	P.S.I.		
H Final Hydrostatic Mud	1683	P.S.I.		

**PRESSURE BREAKDOWN**

**First Flow Pressure**  
Breakdown: 9 Inc.  
of 5 mins. and a  
final inc. of 0 Min.

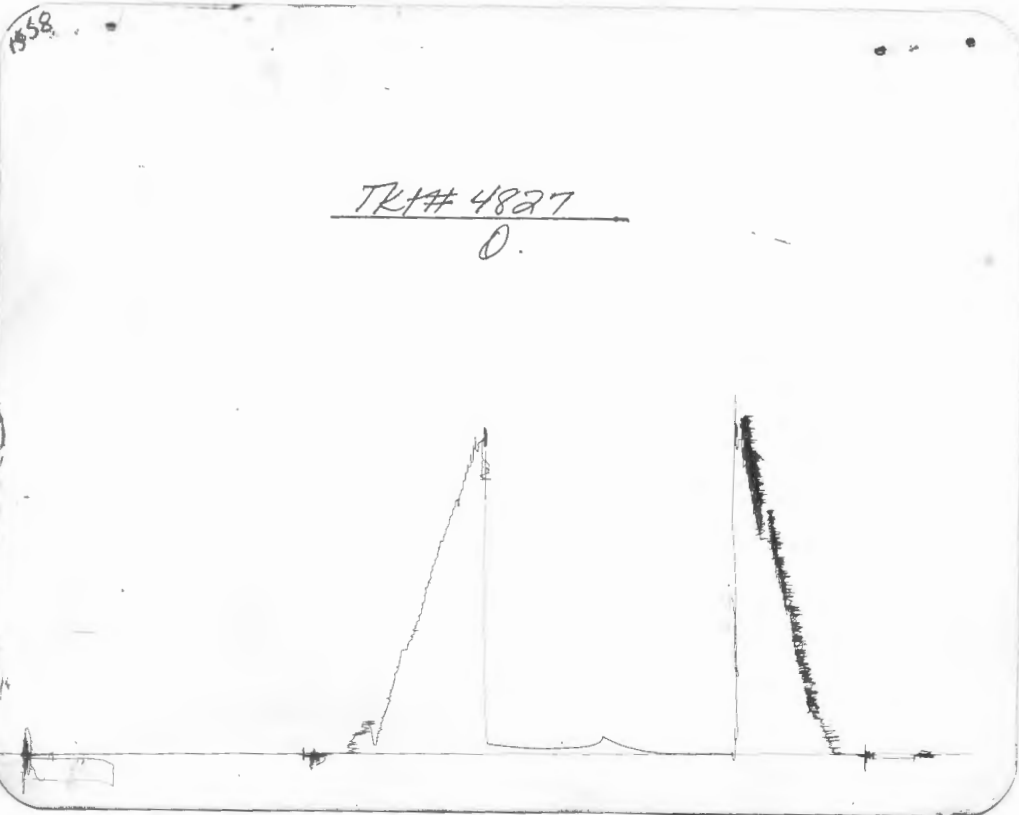
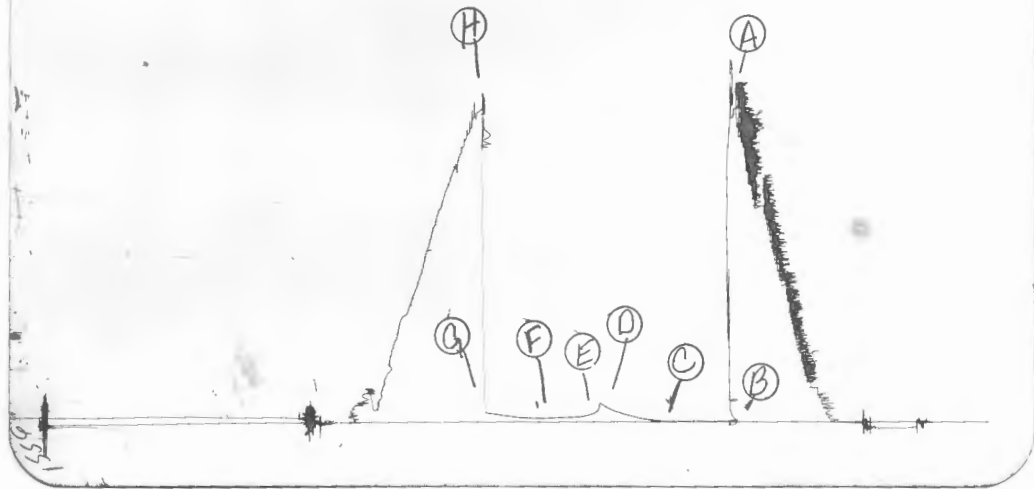
**Initial Shut-In**  
Breakdown: 18 Inc.  
of 3 mins. and a  
final inc. of 0 Min.

**Second Flow Pressure**  
Breakdown: 9 Inc.  
of 5 mins. and a  
final inc. of 0 Min.

**Final Shut-In**  
Breakdown: 13 Inc.  
of 3 mins. and a  
final inc. of 0 Min.

Point Mins.	Press.	Point Minutes	Press.	Point Minutes	Press.	Point Minutes	Press.
P 1 0	1	0	2	0	71	0	19
P 2 5	2	3	3	5	41	3	20
P 3 10	2	6	5	10	31	6	22
P 4 15	2	9	6	15	27	9	23
P 5 20	2	12	9	20	25	12	27
P 6 25	2	15	12	25	23	15	29
P 7 30	2	18	14	30	22	18	31
P 8 35	2	21	18	35	21	21	33
P 9 40	2	24	22	40	20	24	37
P10 45	2	27	27	45	19	27	39
P11		30	35			30	43
P12		33	39			33	46
P13		36	45			36	50
P14		39	54			39	52
P15		42	60				
P16		45	71				
P17		48	83				
P18		51	94				
P19		54	102				
P20							

TK# 4827  
I.





Home Office: Wichita, Kansas 67201

P.O. Box 1599

(316) 262-5861

Company J.A. Allison Lease & Well No. Travis "OWWO" #1  
 Elevation 1271 Kelly Bush. Formation Kansas City Effective Pay - Ft. Ticket No. 4828  
 Date 3-15-80 Sec. 29 Twp 31S Range 3W County Sumner State Kansas  
 Test Approved by Delbert J. Costa Western Representative W.K. Hager

Formation Test No. 2 Interval Tested from 3470 ft. to 3498 ft. Total Depth 3498 ft.  
 Packer Depth 3470 ft. Size 6 3/4 in. Packer Depth - ft. Size - in.  
 Packer Depth - ft. Size - in. Packer Depth - ft. Size - in.

Depth of Selective Zone Set -  
 Top Recorder Depth (Inside) 3485 ft. Recorder Number 1559 Cap. 4200  
 Bottom Recorder Depth (Outside) 3488 ft. Recorder Number 1558 Cap. 4200  
 Below Straddle Recorder Depth - ft. Recorder Number - Cap. -

Drilling Contractor Gabbert-Jones (#3) Drill Collar Length 431 I. D. 2 1/4 in.  
 Mud Type Premix Viscosity 42 Weight Pipe Length - I. D. - in.  
 Weight 9.4+ Water Loss 78 cc. Drill Pipe Length 3024 I. D. 3.8 in.  
 Chlorides 41,000 P.P.M. Test Tool Length 43 ft. Tool Size 5 1/2 in.  
 Jars: Make - Serial Number - Anchor Length 28 ft. Size 5 1/2 in.  
 Did Well Flow? No Reversed Out - Surface Choke Size 3/4 in. Bottom Choke Size 3/4 in.  
 Main Hole Size 7 7/8 in. Tool Joint Size 4 1/2 FH in.

Blow: Weak increasing to fair blow on initial flow period. Strong blow on final flow period.

Recovered 120 ft. of gas in pipe  
 Recovered 90 ft. of heavy oil cut mud.  
 Recovered        ft. of         
 Recovered        ft. of         
 Recovered        ft. of         
 Remarks:       

Time Set Packer(s) 10:10 ~~A.M.~~ P.M. Time Started Off Bottom 1:10 ~~A.M.~~ P.M. Maximum Temperature 116  
 Initial Hydrostatic Pressure ..... (A) 1708 P.S.I.  
 Initial Flow Period ..... Minutes 45 (B) 62 P.S.I. to (C) 31 P.S.I.  
 Initial Closed In Period ..... Minutes 45 (D) 229 P.S.I.  
 Final Flow Period ..... Minutes 45 (E) 98 P.S.I. to (F) 53 P.S.I.  
 Final Closed In Period ..... Minutes 45 (G) 165 P.S.I.  
 Final Hydrostatic Pressure ..... (H) 1694 P.S.I.

**WESTERN TESTING CO., INC.**  
**Pressure Data**

Date 3-15-80 Test Ticket No. 4828  
 Recorder No. 1559 Capacity 4200 Location 3485 Ft.  
 Clock No. - Elevation 1271 Kelly Bushing Well Temperature 116 °F

Point	Pressure		Time Given	Time Computed
A. Initial Hydrostatic Mud	<u>1708</u> P.S.I.	Open Tool	<u>10:10A.</u> M	
B First Initial Flow Pressure	<u>62</u> P.S.I.	First Flow Pressure	<u>45</u> Mins.	<u>45</u> Mins.
C First Final Flow Pressure	<u>31</u> P.S.I.	Initial Closed-in Pressure	<u>45</u> Mins.	<u>45</u> Mins.
D Initial Closed-in Pressure	<u>229</u> P.S.I.	Second Flow Pressure	<u>45</u> Mins.	<u>45</u> Mins.
E Second Initial Flow Pressure	<u>98</u> P.S.I.	Final Closed-in Pressure	<u>45</u> Mins.	<u>45</u> Mins.
F Second Final Flow Pressure	<u>53</u> P.S.I.			
G Final Closed-in Pressure	<u>165</u> P.S.I.			
H Final Hydrostatic Mud	<u>1694</u> P.S.I.			

**PRESSURE BREAKDOWN**

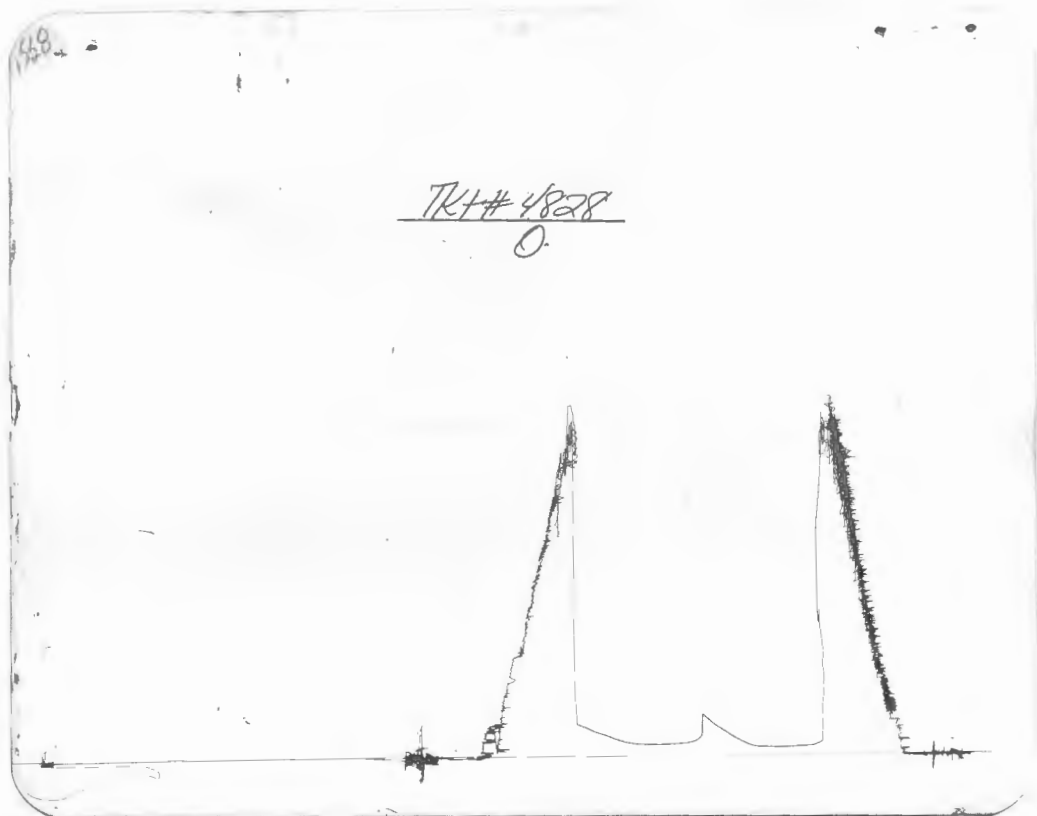
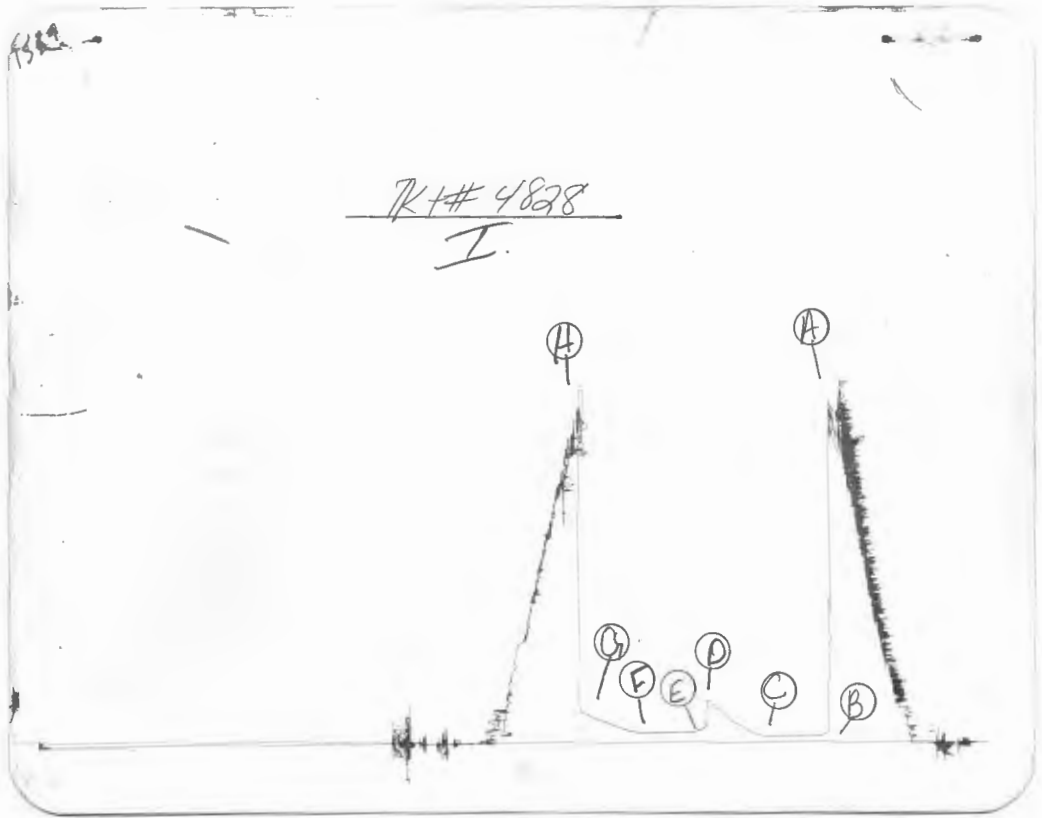
**First Flow Pressure**  
 Breakdown: 9 Inc.  
 of 5 mins. and a  
 final inc. of 0 Min.

**Initial Shut-In**  
 Breakdown: 15 Inc.  
 of 3 mins. and a  
 final inc. of 0 Min.

**Second Flow Pressure**  
 Breakdown: 9 Inc.  
 of 5 mins. and a  
 final inc. of 0 Min.

**Final Shut-In**  
 Breakdown: 15 Inc.  
 of 3 mins. and a  
 final inc. of 0 Min.

Point Mins.	Press.	Point Minutes	Press.	Point Minutes	Press.	Point Minutes	Press.
P 1 <u>0</u>	<u>62</u>	<u>0</u>	<u>32</u>	<u>0</u>	<u>98</u>	<u>0</u>	<u>53</u>
P 2 <u>5</u>	<u>37</u>	<u>3</u>	<u>33</u>	<u>5</u>	<u>68</u>	<u>3</u>	<u>56</u>
P 3 <u>10</u>	<u>32</u>	<u>6</u>	<u>39</u>	<u>10</u>	<u>58</u>	<u>6</u>	<u>58</u>
P 4 <u>15</u>	<u>31</u>	<u>9</u>	<u>45</u>	<u>15</u>	<u>54</u>	<u>9</u>	<u>62</u>
P 5 <u>20</u>	<u>31</u>	<u>12</u>	<u>56</u>	<u>20</u>	<u>52</u>	<u>12</u>	<u>66</u>
P 6 <u>25</u>	<u>31</u>	<u>15</u>	<u>58</u>	<u>25</u>	<u>52</u>	<u>15</u>	<u>75</u>
P 7 <u>30</u>	<u>32</u>	<u>18</u>	<u>81</u>	<u>30</u>	<u>52</u>	<u>18</u>	<u>83</u>
P 8 <u>35</u>	<u>32</u>	<u>21</u>	<u>94</u>	<u>35</u>	<u>52</u>	<u>21</u>	<u>91</u>
P 9 <u>40</u>	<u>32</u>	<u>24</u>	<u>108</u>	<u>40</u>	<u>53</u>	<u>24</u>	<u>100</u>
P10 <u>45</u>	<u>32</u>	<u>27</u>	<u>123</u>	<u>45</u>	<u>53</u>	<u>27</u>	<u>108</u>
P11		<u>30</u>	<u>140</u>			<u>30</u>	<u>117</u>
P12		<u>33</u>	<u>152</u>			<u>33</u>	<u>125</u>
P13		<u>36</u>	<u>169</u>			<u>36</u>	<u>135</u>
P14		<u>39</u>	<u>188</u>			<u>39</u>	<u>144</u>
P15		<u>42</u>	<u>209</u>			<u>42</u>	<u>154</u>
P16		<u>45</u>	<u>229</u>			<u>45</u>	<u>165</u>
P17							
P18							
P19							
P20							





Home Office: Wichita, Kansas 67201

P.O. Box 1599

(316) 262-5861

Company J.A. Allison Lease & Well No. Travis "OWWO" #1  
 Elevation 1271 Kelly Bush. Formation Mississippi Effective Pay - Ft. Ticket No. 4829  
 Date 3-17-80 Sec. 29 Twp. 31S Range 3W County Sumner State Kansas  
 Test Approved by Delbert J. Costa Western Representative W.K. Hager

Formation Test No. 3 Interval Tested from 3950 ft. to 3980 ft. Total Depth 3980 ft.  
 Packer Depth 3945 ft. Size 6 3/4 in. Packer Depth - ft. Size - in.  
 Packer Depth 3950 ft. Size 6 3/4 in. Packer Depth - ft. Size - in.

Depth of Selective Zone Set -  
 Top Recorder Depth (Inside) 3965 ft. Recorder Number 1559 Cap. 4200  
 Bottom Recorder Depth (Outside) 3968 ft. Recorder Number 1558 Cap. 4200  
 Below Straddle Recorder Depth - ft. Recorder Number - Cap. -

Drilling Contractor Gabbert-Jones #8 Drill Collar Length 431 I. D. 2 1/4 in.  
 Mud Type Premix Viscosity 37 Weight Pipe Length - I. D. - in.  
 Weight 9.2 Water Loss 56 cc. Drill Pipe Length 3499 I. D. 3.8 in.  
 Chlorides 29,000 P.P.M. Test Tool Length 50 ft. Tool Size 5 1/2 in.  
 Jars: Make - Serial Number - Anchor Length 30 ft. Size 5 1/2 in.  
 Did Well Flow? No Reversed Out - Surface Choke Size 3/4 in. Bottom Choke Size 3/4 in.  
 Main Hole Size 7 7/8 in. Tool Joint Size 4 1/2 FH in.

Blow: Strong blow throughout test.

Recovered 220 ft. of gassy oil cut mud  
 Recovered - ft. of -  
 Recovered - ft. of -  
 Recovered - ft. of -  
 Recovered - ft. of -

Remarks: Gas to surface after final shut-in.

Time Set Packer(s) 10:55 ~~P.M.~~ <sup>A.M.</sup> Time Started Off Bottom 2:10 ~~P.M.~~ <sup>A.M.</sup> Maximum Temperature 122  
 Initial Hydrostatic Pressure ..... (A) 2048 P.S.I.  
 Initial Flow Period ..... Minutes 45 (B) 71 P.S.I. to (C) 43 P.S.I.  
 Initial Closed In Period ..... Minutes 45 (D) 1211 P.S.I.  
 Final Flow Period ..... Minutes 60 (E) 96 P.S.I. to (F) 80 P.S.I.  
 Final Closed In Period ..... Minutes 45 (G) 1201 P.S.I.  
 Final Hydrostatic Pressure ..... (H) 2004 P.S.I.

**WESTERN TESTING CO., INC.**  
**Pressure Data**

Date 3-17-80 Test Ticket No. 4829  
 Recorder No. 1559 Capacity 4200 Location 3965 F  
 Clock No. - Elevation 1271 Kelly Bushing Well Temperature 122 °

Point	Pressure		Time Given	Time Computed
A Initial Hydrostatic Mud	2048	P.S.I.	10:55A.	M
B First Initial Flow Pressure	71	P.S.I.	45	Mins. 45 Min
C First Final Flow Pressure	43	P.S.I.	45	Mins. 45 Min
D Initial Closed-in Pressure	1211	P.S.I.	60	Mins. 60 Min
E Second Initial Flow Pressure	96	P.S.I.	45	Mins. 51 Min
F Second Final Flow Pressure	80	P.S.I.		
G Final Closed-in Pressure	1201	P.S.I.		
H Final Hydrostatic Mud	2004	P.S.I.		

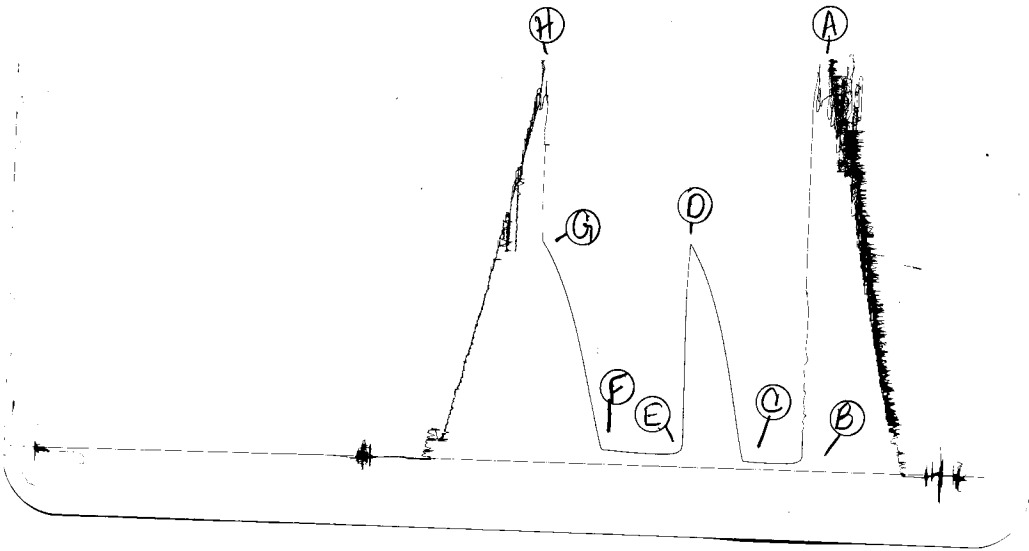
**PRESSURE BREAKDOWN**

First Flow Pressure		Initial Shut-In		Second Flow Pressure		Final Shut-In		
Breakdown: <u>9</u> Inc.		Breakdown: <u>15</u> Inc.		Breakdown: <u>12</u> Inc.		Breakdown: <u>17</u> Inc.		
of <u>5</u> mins. and a		of <u>3</u> mins. and a		of <u>5</u> mins. and a		of <u>3</u> mins. and a		
final inc. of <u>0</u> Min.		final inc. of <u>0</u> Min.		final inc. of <u>0</u> Min.		final inc. of <u>0</u> Min.		
Point Mins.	Press.	Point Minutes	Press.	Point Minutes	Press.	Point Minutes	Press.	
P 1	0	71	0	43	0	96	0	80
P 2	5	45	3	119	5	73	3	140
P 3	10	38	6	226	10	69	6	226
P 4	15	38	9	353	15	67	9	319
P 5	20	38	12	471	20	66	12	418
P 6	25	38	15	572	25	67	15	506
P 7	30	38	18	671	30	69	18	594
P 8	35	39	21	760	35	70	21	683
P 9	40	42	24	843	40	72	24	764
P10	45	43	27	908	45	74	27	839
P11			30	979	50	76	30	902
P12			33	1033	55	78	33	960
P13			36	1086	60	80	36	1015
P14			39	1127			39	1059
P15			42	1171			42	1105
P16			45	1211			45	1148
P17							48	1180
P18							51	1201
P19								
P20								

755

TKI# 4829

I.



755

TKI# 4829

0.

