

14-31-32W

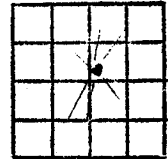
WELL LOG BUREAU--KANSAS GEOLOGICAL SOCIETY
508 East Murdock, Wichita, Kansas

Company- SKELLY OIL COMPANY
Farm- Ethel Clark No. 1

SEC. 14 T. 31 R. 32W
SW SW NE
330' fr SL 330' fr WL NE/4

Total Depth. 2719 PB 2708
Comm. 6-15-53 Corp. 7-5-53
Shot or Treated.
Contractor. Flournoy Drlg. Co.
Issued. 11-14-53

County Seward
KANSAS



Elevation. 2846 DF

Production. 3,440,000 Gas

Figures Indicate Bottom of Formations.

surface soil & clay	40
clay & sand	100
sand & gravel	315
clay & sand	515
shale red & lime	700
shale red, & shells	1761
shale & lime	2606
lime	2625
lime	2682
lime	2719
Total Depth PB 2708	

Tops:	
Herington Lime	2619
Upper Krider Lime	2640
Paddock Shale	2634
Shale Gray	2662
Lower Krider	2666
Odell Shale	2702
Winfield Lime	2715

Light show of gas from 2640-46'
Gas gauged 160 M.C.F. from
2672-2682'.
No change in gas flow 2682-2719'

7-3-53 shot between 2598-2682'
7-5-53 6000 gal. acid shot between
2598-2708'
7-6-53 3000 gal. acid shot between
2598-2708'

Producing Formation Hugoton Gas
Pay 2598-2708'

Ran Schlumberger Survey