

Phone
(303) 830-8080

Star Hughes

Denver Center Bldg.
1776 Lincoln St., Suite 408
Denver, CO 80203

Contractor Big H Drilling
Rig No. --
Spot C/NW/NE
Sec. 35
Twp. 31 S
Rng. 11 W
Field --
County Barber
State Kansas
Elevation 1634' KB
Formation Douglas

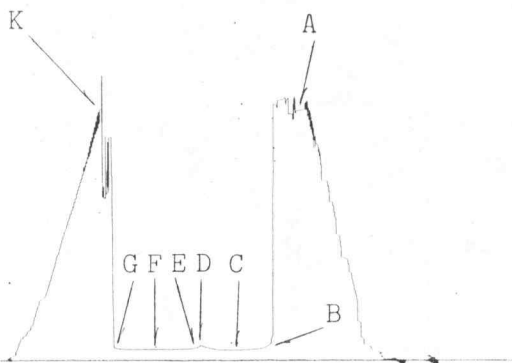
Surface Choke 1"
Bottom Choke 5/8"
Hole Size 7 7/8"
Core Hole Size --
DP Size & Wt. 4 1/2" XH
Wt. Pipe --
I.D. of DC 2 1/4"
Length of DC 185'
Total Depth 3854'
Type Test Straddle
Interval 3621' - 3698'

Mud Type Gel
Weight 9.4
Viscosity 52
Water Loss 8.0
Filter Cake 2/32
Resistivity -- @ 14,000 Ppm. NaCl
B.H.T. 104
Co. Rep. Dave Goldak
Tester William Weaver

	REPORTED	CORRECTED
Opened Tool @	<u>11:35</u>	<u>hrs.</u>
Flow No. 1	<u>30</u>	<u>28</u> min.
Shut-in No. 1	<u>30</u>	<u>26</u> min.
Flow No. 2	<u>30</u>	<u>31</u> min.
Shut-in No. 2	<u>30</u>	<u>32</u> min.
Flow No. 3	<u>None Taken</u>	<u>min.</u>
Shut-in No. 3	<u>"</u>	<u>"</u> min.

Recorder Type Kuster AK-1
No. 13634 Cap. 5625 psi
Depth 3695 feet
Inside Outside x

Initial Hydrostatic	A	<u>1892</u>
Final Hydrostatic	K	<u>1827</u>
Initial Flow	B	<u>102</u>
Final Initial Flow	C	<u>76</u>
Initial Shut-in	D	<u>111</u>
Second Initial Flow	E	<u>95</u>
Second Final Flow	F	<u>83</u>
Second Shut-in	G	<u>92</u>
Third Initial Flow	H	
Third Final Flow	I	
Third Shut-in	J	



Pipe Recovery: 15' Drilling mud = 0.07 bbl.

Surface blow:

1st flow: Tool opened with a weak blow and remained through flow period.

2nd flow:

Tool opened with a weak blow, died in 7 minutes and remained through flow period.

Operator Hummon Corp.
Ticket No. 02352
Date 1/10/84
Well Name & No. Smith #4-35
Location C/NW/NE S-35 T-31S R-11W
County, State Barber County, Kansas
DST No. 1
Interval 3621' - 3698'
Formation Douglas

Star Hughes

Hummon Corp.
Operator

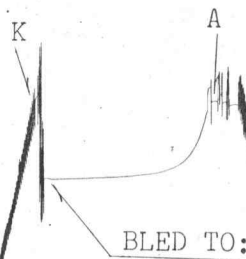
Smith #4-35
Well Name and No.

1
DST No.

Recorder Type Kuster AK-1
No. 10248 Cap. 4400 psi
Depth 3857 feet
Inside Outside X

Initial Hydrostatic A 1979
Final Hydrostatic K 1906
Initial Flow B _____
Final Initial Flow C _____
Initial Shut-in D _____
Second Initial Flow E _____
Second Final Flow F _____
Second Shut-in G _____
Third Initial Flow H _____
Third Final Flow I _____
Third Shut-in J _____

Bled to: 1453



Recorder Type _____
No. _____ Cap. _____ psi
Depth _____ feet
Inside Outside

Initial Hydrostatic A _____
Final Hydrostatic K _____
Initial Flow B _____
Final Initial Flow C _____
Initial Shut-in D _____
Second Initial Flow E _____
Second Final Flow F _____
Second Shut-in G _____
Third Initial Flow H _____
Third Final Flow I _____
Third Shut-in J _____

Star Hughes

INCREMENTAL READING DATA

Hummon Corp.
Operator

Smith #4-35
Well Name and No.

1
DST No.

RECORDER NO. 13634 DEPTH 3695 FT.

INITIAL SHUT-IN

INITIAL FLOW TIME: T = 28 MIN.

DT (MIN) LOG((T+DT)/DT) PRESSURE (PSIG)

0 76.4
2 1.176 78.0
4 .903 78.1
6 .753 78.2
8 .653 78.4
10 .580 78.5
12 .523 78.6
14 .477 80.2
16 .439 84.6
18 .407 90.3
20 .380 94.7
22 .357 100.5
24 .336 106.3
26 .317 110.7

EXTRAPOLATED PRESSURE: INDETERMINATE

Star Hughes

INCREMENTAL READING DATA

Hummon Corp.
Operator

Smith #4-35
Well Name and No.

1
DST No.

RECORDER NO. 13634 DEPTH 3695 FT.

FINAL SHUT-IN

TOTAL FLOW TIME: T = 59 MIN.

DT (MIN) LOG((T+DT)/DT) PRESSURE (PSIG)

0		83.0
2	1.484	83.2
4	1.197	83.3
6	1.035	83.4
8	.923	83.5
10	.839	83.7
12	.772	83.8
14	.717	83.9
16	.671	84.1
18	.631	84.2
20	.597	84.3
22	.566	84.5
24	.539	84.6
26	.514	84.7
28	.492	86.3
30	.472	89.2
32	.454	92.2

EXTRAPOLATED PRESSURE: INDETERMINATE

Star Hughes

DISTRIBUTION OF FINAL REPORTS

Hummon Corp.
Operator

Smith #4-35
Well Name and No.

Hummon Corp. 10
400 One Main Place
Wichita, KS 67202

Phone
(303) 830-8080

Star Hughes

Denver Center Bldg.
1776 Lincoln St., Suite 408
Denver, CO 80203

Contractor Big H Drilling
Rig No. --
Spot C/NW/NE
Sec. 35
Twp. 31 S
Rng. 11 W
Field --
County Barber
State Kansas
Elevation 1634' KB
Formation Lansing

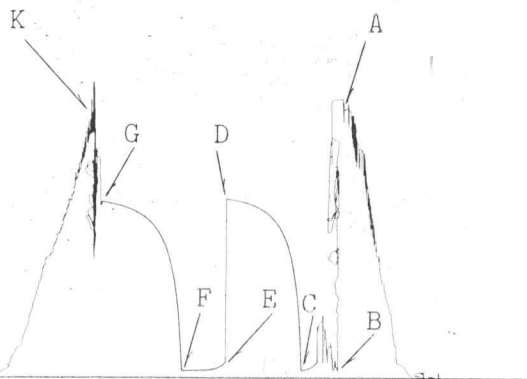
Surface Choke 1"
Bottom Choke 5/8"
Hole Size 7 7/8"
Core Hole Size --
DP Size & Wt. 4 1/2" XH
Wt. Pipe --
I.D. of DC 2 1/4"
Length of DC 360'
Total Depth 3854'
Type Test Conventional
Interval 3816' - 3854'

Mud Type Gel
Weight 9.4
Viscosity 52
Water Loss 8.0
Filter Cake 2/32
Resistivity -- @ -- OF
14,000 Ppm. NaCl
B.H.T. 104 OF
Co. Rep. Dave Goldak
Tester William Weaver

	REPORTED	CORRECTED
Opened Tool @	<u>05:10</u>	<u>05:10</u> hrs.
Flow No. 1	<u>30</u>	<u>27</u> min.
Shut-in No. 1	<u>60</u>	<u>56</u> min.
Flow No. 2	<u>30</u>	<u>32</u> min.
Shut-in No. 2	<u>60</u>	<u>59</u> min.
Flow No. 3	<u>None Taken</u>	<u>None Taken</u> min.
Shut-in No. 3	<u>"</u>	<u>"</u> min.

Recorder Type Kuster AK-1
No. 13635 Cap. 5600 psi
Depth 3809 feet
Inside X Outside

Initial Hydrostatic	A	<u>1956</u>
Final Hydrostatic	K	<u>1927</u>
Initial Flow	B	<u>61</u>
Final Initial Flow	C	<u>60</u>
Initial Shut-in	D	<u>1311</u>
Second Initial Flow	E	<u>98</u>
Second Final Flow	F	<u>60</u>
Second Shut-in	G	<u>1291</u>
Third Initial Flow	H	
Third Final Flow	I	
Third Shut-in	J	



Pipe Recovery: 61' Slightly gas cut mud = 0.30 bbl.

Surface blow:

1st flow: Tool opened with a weak, 1/2" blow and remained through flow period.

2nd flow: Tool opened with a weak, 1/4" blow and remained through flow period.

Remarks: The pressure chart indicates slight plugging occurring during the first 18 minutes of the initial flow period. However, this plugging had no apparent effect on the results of the test.

Operator
Ticket No. 02353
Date 1/10/84
Hummon Corp.
Well Name & No. Smith #4-35
Location C/NW/NE S-35 T-31S R-11W
County, State Barber County, Kansas
Interval 3816' - 3854'
Formation Lansing

Star Hughes

INCREMENTAL READING DATA

Hummon Corp.
Operator

Smith #4-35
Well Name and No.

2
DST No.

RECORDER NO. 13635 DEPTH 3809 FT.

INITIAL SHUT-IN
INITIAL FLOW TIME: T = 27 MIN.

DT (MIN) LOG((T+DT)/DT) PRESSURE (PSIG)

0 60.2
4 .889 652.6
8 .641 884.4
12 .512 1016.2
16 .429 1096.0
20 .371 1153.5
24 .327 1194.1
28 .293 1222.2
32 .266 1244.7
36 .243 1264.3
40 .224 1279.8
44 .208 1291.1
48 .194 1299.6
52 .182 1305.3
56 .171 1311.0

EXTRAPOLATED PRESSURE: 1411.2 PSI
SLOPE: 581.7 PSI/LOG CYCLE
POINTS USED: 5

Star Hughes

INCREMENTAL READING DATA

Hummon Corp.
Operator

Smith #4-35
Well Name and No.

2
DST No.

RECORDER NO. 13635 DEPTH 3809 FT.

FINAL SHUT-IN

TOTAL FLOW TIME: T = 59 MIN.

DT (MIN) LOG((T+DT)/DT) PRESSURE (PSIG)

0 60.0
4 1.197 562.3
8 .923 794.4
12 .772 950.1
16 .671 1039.8
20 .597 1104.3
24 .539 1149.1
28 .492 1182.8
32 .454 1208.1
36 .421 1227.8
40 .394 1244.6
44 .369 1260.1
48 .348 1270.0
52 .329 1278.5
56 .313 1287.0
59 .301 1291.3

EXTRAPOLATED PRESSURE: 1430.6 PSI
SLOPE: 461.3 PSI/LOG CYCLE
POINTS USED: 5

Star Hughes

DISTRIBUTION OF FINAL REPORTS

Hummon Corp.
Operator

Smith #4-35
Well Name and No.

Hummon Corp. 10
400 One Main Place
Wichita, KS 67202