

DRILL-STEM TEST DATA

Well Name: McCONNELL #1-14
Company : BEREXCO INC
Location - Sec: 14 **Twp:** 31S **Rge:** 36W
County: STEVENS **State:** KS
Date: 13-Oct-95

TRILOBITE TESTING L.L.C.

OPERATOR : Berexo Inc. DATE 10-8-95
 WELL NAME: McConnell #1-14 KB 3046.00 ft TICKET NO: 8245 DST #1
 LOCATION : 14-31S-36W, Stevens KS GR 0.00 ft FORMATION: Lower Morrow
 INTERVAL : 5745.00 To 5796.00 ft TD 5796.00 ft TEST TYPE: CONVENTIONAL

RECORDER DATA

Mins	Field	1	2	3	4	TIME DATA-----
PF 15 Rec.	2836	2836	2342			PF Fr. 0025 to 0040 hr
SI 30 Range(Psi)	3500.0	3500.0	4995.0	0.0	0.0	IS Fr. 0040 to 0110 hr
SF 120 Clock(hrs)	AK-1	AK-1	alpin			SF Fr. 0110 to 0310 hr
FS 120 Depth(ft)	5793.0	5793.0	5750.0	0.0	0.0	FS Fr. 0310 to 0510 hr

	Field	1	2	3	4	
A. Init Hydro	2759.0	2816.0	2826.0	0.0	0.0	T STARTED 2045 hr
B. First Flow	85.0	92.0	29.0	0.0	0.0	T ON BOTM 0020 hr
B1. Final Flow	68.0	84.0	30.0	0.0	0.0	T OPEN 0025 hr
C. In Shut-in	265.0	288.0	337.0	0.0	0.0	T PULLED 0510 hr
D. Init Flow	42.0	53.0	23.0	0.0	0.0	T OUT 0900 hr
E. Final Flow	34.0	51.0	34.0	0.0	0.0	
F. Fl Shut-in	1577.0	1615.0	1722.0	0.0	0.0	TOOL DATA-----
G. Final Hydro	2576.0	2641.0	2688.0	0.0	0.0	Tool Wt. 18000.00 lbs
Inside/Outside	0	0	I			Wt Set On Packer 20000.00 lbs
						Wt Pulled Loose 110000.00 lbs
						Initial Str Wt 105000.00 lbs
						Unseated Str Wt 85000.00 lbs
						Bot Choke 6.75 in
						Hole Size 7.88 in
						D Col. ID 2.25 in
						D. Pipe ID 3.88 in
						D.C. Length 583.00 ft
						D.P. Length 5117.00 ft

RECOVERY

Tot Fluid 5.00 ft of 5.00 ft in DC and 0.00 ft in DP
 5.00 ft of Drilling mud

SALINITY 0.00 P.P.M. A.P.I. Gravity 0.00

BLOW DESCRIPTION

Initial Blow -
 Fair blow, bottom of bucket in 12 min

Initial Shutin -
 Bled off 2", no blow back

Final Blow -
 Strong blow, bottom of bucket in 1 min

Final Shutin -
 Bled off 2", no blow back

SAMPLES:

SENT TO:

MUD DATA-----

Mud Type	Chemical
Weight	9.10 lb/c
Vis.	61.00 S/L
W.L.	7.70 in3
F.C.	0.00 in
Mud Drop Y	30.0 ft
Amt. of fill	0.00 ft
Btm. H. Temp.	129.00 F
Hole Condition	Good
% Porosity	0.00
Packer Size	6.75 in
No. of Packers	2
Cushion Amt.	0.00
Cushion Type	
Reversed Out N	
Tool Chased N	
Tester	Mike Colantonio
Co. Rep.	Charle
Contr.	Beredco Drlg.
Rig #	1
Unit #	
Pump T.	

Test Successful: Y

TEST HISTORY

#8245 DST#1 Berexco Inc. McConnell #11-14

Flag Points

t (Min.)	Pk (PSig)
A: 0.00	2825.76
B: 0.00	28.61
C: 14.00	29.62
D: 30.00	337.21
E: 0.00	23.49
F: 118.00	33.56
G: 122.00	1721.77
Q: 0.00	2667.78

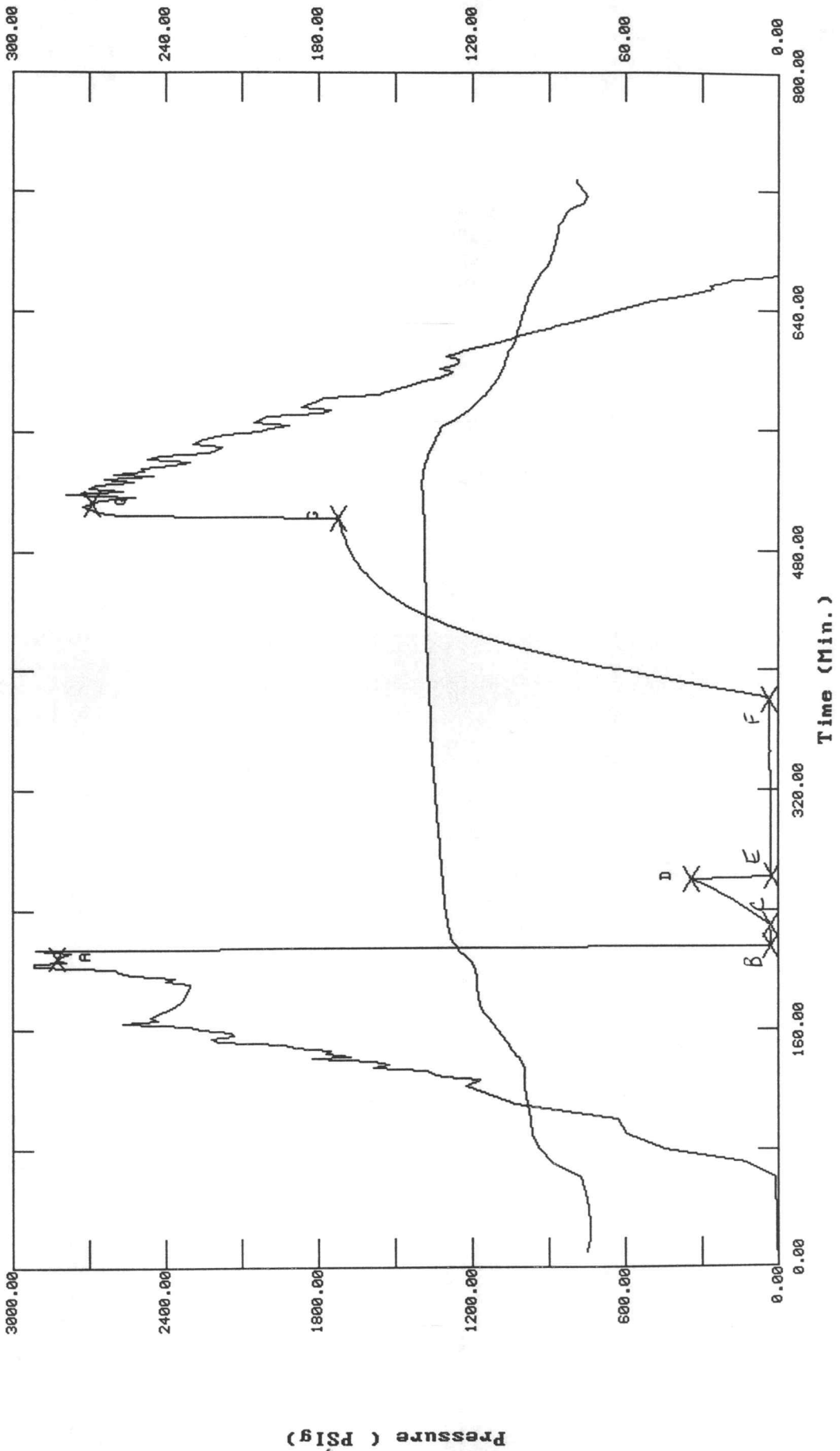
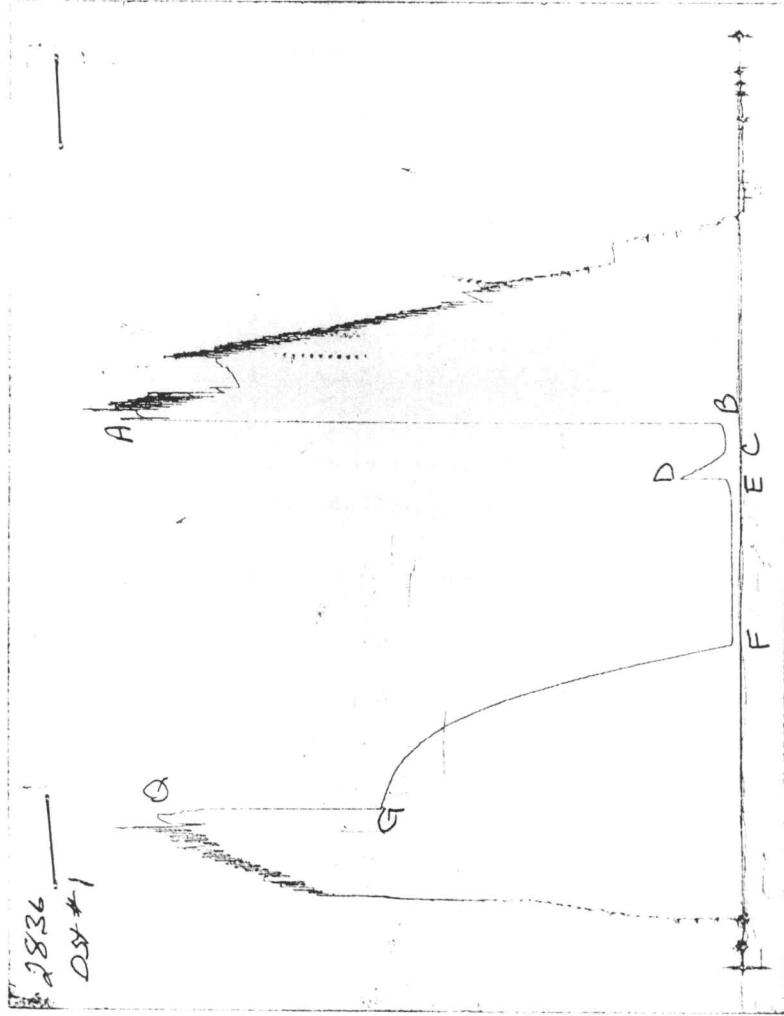


CHART PAGE



This is an actual photograph of recorder chart

ALPINE SUBSURFACE ELECTRONICS PROBE INCREMENTS LISTING

TEST: #8245 DST#1 Berexco Inc. McConnell #1-14

DATE: 10/08/95 TIME: 19:44:30

	Time	Pressure PSIg	delta P PSIg	Temp. DEG F	(T+dT)/dT	P ² /10 ⁶
***** Initial Hydro.	208.00	2825.8	0.0	121.64		
***** Start Flow 1	0.00	28.6	0.0	126.14		
	2.00	29.4	0.8	127.04		
	4.00	28.7	0.1	127.58		
	6.00	28.6	0.0	128.12		
	8.00	29.5	0.9	128.48		
	10.00	30.1	1.5	128.84		
	12.00	31.4	2.8	129.20		
***** End Flow 1	14.00	29.6	1.0	129.38		
***** Start Shutin 1	0.00	29.6	0.0	129.38	0.0000	0.001
	2.00	44.6	14.9	129.56	8.0000	0.002
	4.00	61.8	32.2	129.74	4.5000	0.004
	6.00	79.6	49.9	129.92	3.3333	0.006
	8.00	97.2	67.6	130.10	2.7500	0.009
	10.00	115.4	85.8	130.28	2.4000	0.013
	12.00	134.1	104.5	130.46	2.1667	0.018
	14.00	153.6	124.0	130.64	2.0000	0.024
	16.00	173.8	144.2	130.82	1.8750	0.030
	18.00	195.0	165.4	130.82	1.7778	0.038
	20.00	216.9	187.3	131.00	1.7000	0.047
	22.00	239.6	210.0	131.18	1.6364	0.057
	24.00	262.9	233.2	131.18	1.5833	0.069
	26.00	287.1	257.5	131.36	1.5385	0.082
	28.00	311.6	282.0	131.36	1.5000	0.097
***** End Shut-in 1	30.00	337.2	307.6	131.54	1.4667	0.114
***** Start Flow 2	0.00	23.5	0.0	131.54		
	2.00	26.7	3.2	131.72		
	4.00	26.3	2.8	131.72		
	6.00	26.9	3.4	131.90		
	8.00	27.1	3.6	131.90		
	10.00	26.9	3.4	131.90		
	12.00	27.2	3.7	132.08		
	14.00	27.3	3.8	132.26		
	16.00	26.7	3.2	132.26		
	18.00	27.4	3.9	132.44		
	20.00	27.6	4.1	132.44		
	22.00	27.6	4.1	132.62		
	24.00	28.0	4.5	132.80		
	26.00	27.9	4.4	132.80		
	28.00	27.9	4.4	132.98		
	30.00	27.8	4.3	133.16		
	32.00	28.0	4.5	133.16		
	34.00	28.2	4.7	133.34		
	36.00	28.1	4.6	133.34		
	38.00	28.0	4.5	133.52		
	40.00	28.6	5.1	133.52		
	42.00	28.5	5.0	133.70		
	44.00	28.9	5.4	133.70		
	46.00	29.4	5.9	133.88		
	48.00	28.9	5.4	133.88		
	50.00	29.5	6.0	134.06		

ALPINE SUBSURFACE ELECTRONICS PROBE INCREMENTS LISTING

TEST: #8245 DST#1 Berexco Inc. McConnell #1-14

DATE: 10/08/95

TIME: 19:44:30

	Time	Pressure PSig	delta P PSig	Temp. DEG F	(T+dT)/dT	P ² /10 ⁶
	52.00	28.8	5.3	134.24		
	54.00	29.2	5.7	134.24		
	56.00	30.0	6.5	134.42		
	58.00	29.3	5.8	134.42		
	60.00	29.9	6.4	134.60		
	62.00	29.9	6.4	134.60		
	64.00	30.3	6.8	134.78		
	66.00	30.4	6.9	134.78		
	68.00	30.5	7.0	134.96		
	70.00	30.2	6.7	134.96		
	72.00	30.7	7.2	135.14		
	74.00	31.0	7.5	135.14		
	76.00	31.1	7.6	135.32		
	78.00	30.8	7.3	135.32		
	80.00	31.6	8.1	135.32		
	82.00	31.1	7.6	135.50		
	84.00	30.6	7.1	135.50		
	86.00	31.5	8.0	135.68		
	88.00	31.8	8.3	135.68		
	90.00	31.0	7.6	135.68		
	92.00	32.1	8.6	135.86		
	94.00	31.5	8.0	135.86		
	96.00	32.3	8.8	135.86		
	98.00	31.7	8.2	136.04		
	100.00	31.7	8.2	136.04		
	102.00	31.8	8.3	136.04		
	104.00	32.1	8.6	136.22		
	106.00	32.1	8.6	136.22		
	108.00	32.3	8.8	136.22		
	110.00	32.6	9.1	136.40		
	112.00	32.0	8.5	136.40		
	114.00	33.1	9.6	136.40		
	116.00	33.3	9.8	136.58		
***** End Flow 2	118.00	33.6	10.1	136.58		
***** Start Shutin 2	0.00	33.6	0.0	136.58	0.0000	0.001
	2.00	48.9	15.4	136.58	67.0000	0.002
	4.00	119.5	85.9	136.76	34.0000	0.014
	6.00	187.4	153.8	136.76	23.0000	0.035
	8.00	253.5	220.0	136.94	17.5000	0.064
	10.00	318.2	284.6	136.94	14.2000	0.101
	12.00	381.5	348.0	136.94	12.0000	0.146
	14.00	443.5	409.9	137.12	10.4286	0.197
	16.00	504.0	470.4	137.12	9.2500	0.254
	18.00	563.1	529.5	137.12	8.3333	0.317
	20.00	620.7	587.2	137.30	7.6000	0.385
	22.00	676.9	643.3	137.30	7.0000	0.458
	24.00	731.4	697.9	137.30	6.5000	0.535
	26.00	784.5	751.0	137.48	6.0769	0.616
	28.00	835.8	802.3	137.48	5.7143	0.699
	30.00	885.9	852.4	137.48	5.4000	0.785
	32.00	934.1	900.5	137.48	5.1250	0.873

 ALPINE SUBSURFACE ELECTRONICS PROBE INCREMENTS LISTING

TEST: #8245 DST#1 Berexco Inc. McConnell #1-14

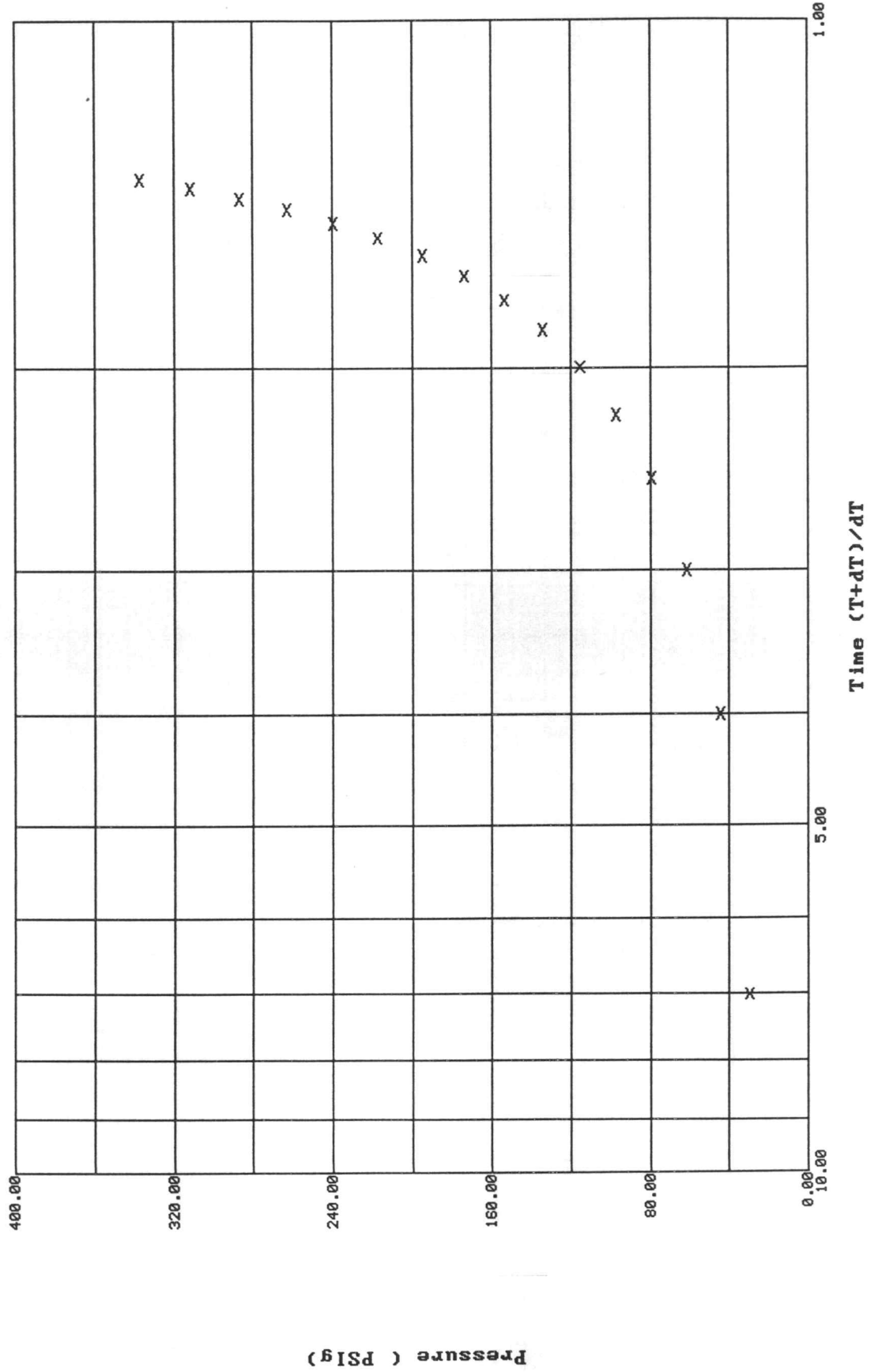
DATE: 10/08/95

TIME: 19:44:30

Time	Pressure PSig	delta P PSig	Temp. DEG F	(T+dT)/dT	P ² /10 ⁶	
34.00	980.4	946.9	137.66	4.8824	0.961	
36.00	1025.2	991.6	137.66	4.6667	1.051	
38.00	1068.1	1034.6	137.66	4.4737	1.141	
40.00	1109.2	1075.6	137.66	4.3000	1.230	
42.00	1148.4	1114.8	137.66	4.1429	1.319	
44.00	1185.6	1152.0	137.84	4.0000	1.406	
46.00	1221.0	1187.4	137.84	3.8696	1.491	
48.00	1254.8	1221.2	137.84	3.7500	1.575	
50.00	1286.6	1253.0	137.84	3.6400	1.655	
52.00	1316.7	1283.2	137.84	3.5385	1.734	
54.00	1345.2	1311.6	137.84	3.4444	1.810	
56.00	1372.0	1338.4	138.02	3.3571	1.882	
58.00	1396.9	1363.3	138.02	3.2759	1.951	
60.00	1420.6	1387.0	138.02	3.2000	2.018	
62.00	1443.0	1409.4	138.02	3.1290	2.082	
64.00	1463.6	1430.0	138.20	3.0625	2.142	
66.00	1483.2	1449.7	138.20	3.0000	2.200	
68.00	1501.2	1467.6	138.20	2.9412	2.254	
70.00	1518.4	1484.9	138.20	2.8857	2.306	
72.00	1534.3	1500.7	138.20	2.8333	2.354	
74.00	1549.4	1515.8	138.20	2.7838	2.401	
76.00	1563.2	1529.7	138.20	2.7368	2.444	
78.00	1576.0	1542.4	138.20	2.6923	2.484	
80.00	1588.2	1554.6	138.38	2.6500	2.522	
82.00	1599.6	1566.0	138.38	2.6098	2.559	
84.00	1610.1	1576.5	138.38	2.5714	2.592	
86.00	1619.9	1586.3	138.38	2.5349	2.624	
88.00	1629.1	1595.6	138.38	2.5000	2.654	
90.00	1637.8	1604.3	138.38	2.4667	2.683	
92.00	1645.8	1612.3	138.38	2.4348	2.709	
94.00	1653.5	1620.0	138.38	2.4043	2.734	
96.00	1660.6	1627.0	138.56	2.3750	2.758	
98.00	1667.2	1633.7	138.56	2.3469	2.780	
100.00	1673.3	1639.7	138.56	2.3200	2.800	
102.00	1679.3	1645.7	138.56	2.2941	2.820	
104.00	1684.7	1651.1	138.56	2.2692	2.838	
106.00	1689.9	1656.3	138.56	2.2453	2.856	
108.00	1694.8	1661.3	138.56	2.2222	2.872	
110.00	1699.2	1665.6	138.56	2.2000	2.887	
112.00	1703.5	1669.9	138.74	2.1786	2.902	
114.00	1707.5	1673.9	138.74	2.1579	2.916	
116.00	1711.4	1677.8	138.74	2.1379	2.929	
118.00	1715.2	1681.7	138.74	2.1186	2.942	
120.00	1718.5	1684.9	138.74	2.1000	2.953	
***** End Shut-in 2	122.00	1721.8	1688.2	138.74	2.0820	2.964

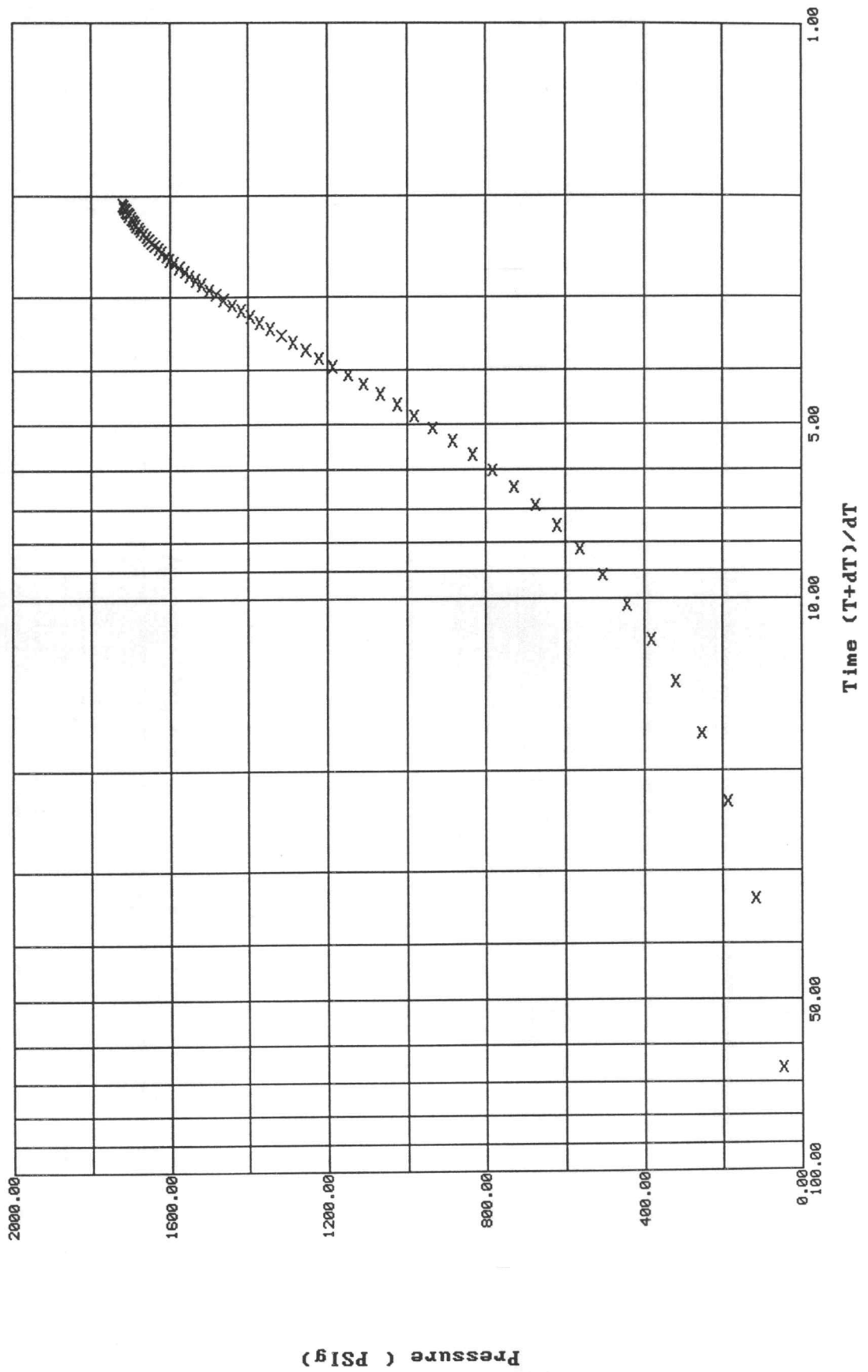
***** Final Hydro. 512.00 2687.8 0.0 139.10

Horner Plot: shut-in #1
#8245 DST#1 Berexco Inc. McConnell #11-14



Horner Plot: shut-in #2

#8245 DST#1 Berexco Inc. McConnell #1-14



TRILOBITE TESTING L.L.C.

OPERATOR : Berexco Inc. DATE 10-10-95
 WELL NAME: McConnell #1-14 KB 3046.00 ft TICKET NO: 8246 DST #2
 LOCATION : 14-31S-36W, Stevens KS GR 0.00 ft FORMATION: Morrow
 INTERVAL : 5985.00 To 6010.00 ft TD 6010.00 ft TEST TYPE: CONVENTIONAL

RECORDER DATA

Mins		Field	1	2	3	4	TIME DATA-----
PF 15	Rec.	2836	2836	2342			PF Fr. 1502 to 1517 hr
SI 30	Range(Psi)	3500.0	3500.0	4995.0	0.0	0.0	IS Fr. 1517 to 1547 hr
SF 30	Clock(hrs)	AK-1	AK-1	Alpin			SF Fr. 1547 to 1617 hr
FS 60	Depth(ft)	6007.0	6007.0	5990.0	0.0	0.0	FS Fr. 1617 to 1717 hr

	Field	1	2	3	4	
A. Init Hydro	2895.0	2884.0	2961.0	0.0	0.0	T STARTED 1230 hr
B. First Flow	34.0	36.0	37.0	0.0	0.0	T ON BOTM 1500 hr
B1. Final Flow	34.0	36.0	39.0	0.0	0.0	T OPEN 1502 hr
C. In Shut-in	42.0	46.0	100.0	0.0	0.0	T PULLED 1717 hr
D. Init Flow	25.0	39.0	39.0	0.0	0.0	T OUT 2100 hr
E. Final Flow	25.0	39.0	40.0	0.0	0.0	
F. Fl Shut-in	34.0	53.0	89.0	0.0	0.0	TOOL DATA-----
G. Final Hydro	2713.0	2748.0	2838.0	0.0	0.0	Tool Wt. 18000.00 lbs
Inside/Outside	0	0	I			Wt Set On Packer 20000.00 lbs

RECOVERY

Tot Fluid 2.00 ft of 2.00 ft in DC and 0.00 ft in DP
 2.00 ft of Drilling mud

Initial Str Wt 100000.00 lb
 Unseated Str Wt 80000.00 lbs
 Bot Choke 0.75 in
 Hole Size 7.88 in
 D Col. ID 2.25 in
 D. Pipe ID 3.88 in
 D.C. Length 612.00 ft
 D.P. Length 5374.00 ft

SALINITY 0.00 P.P.M. A.P.I. Gravity 0.00

BLOW DESCRIPTION

Initial Blow -
 Weak surface blow, died in 4 min

Final Blow -
 Dead, no blow

MUD DATA-----
 Mud Type Chemical
 Weight 9.10 lb/
 Vis. 65.00 S/L
 W.L. 9.20 in3
 F.C. 0.00 in
 Mud Drop Y 10.0 ft

Amt. of fill 0.00 ft
 Btm. H. Temp. 131.00 F
 Hole Condition Good
 % Porosity 0.00
 Packer Size 6.75 in
 No. of Packers 2
 Cushion Amt. 0.00
 Cushion Type
 Reversed Out N
 Tool Chased N
 Tester Mike Colantonio
 Co. Rep. Charle Spradling
 Contr. Beredco Drlg
 Rig # 1
 Unit #
 Pump T.

SAMPLES:
 SENT TO:

Test Successful: Y

TEST HISTORY

8246 DST.#2 McConnell #1-14 Berexco Inc.

Flag Points

t(Min.) P(PSig)

A:	0.00	2961.05
B:	0.00	36.84
C:	16.00	39.44
D:	28.00	99.53
E:	0.00	38.68
F:	30.00	40.03
G:	58.00	89.04
Q:	0.00	2838.18

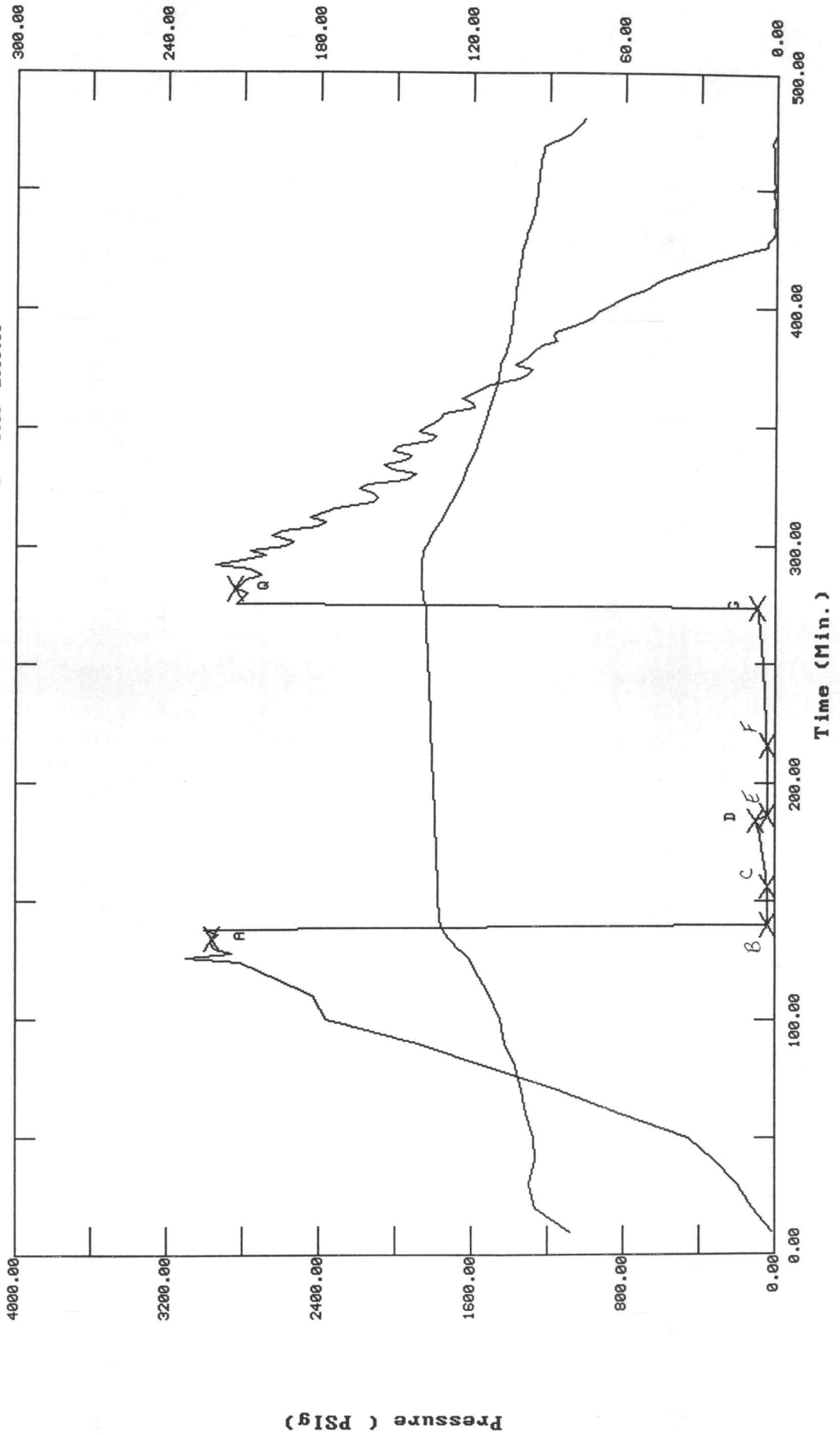
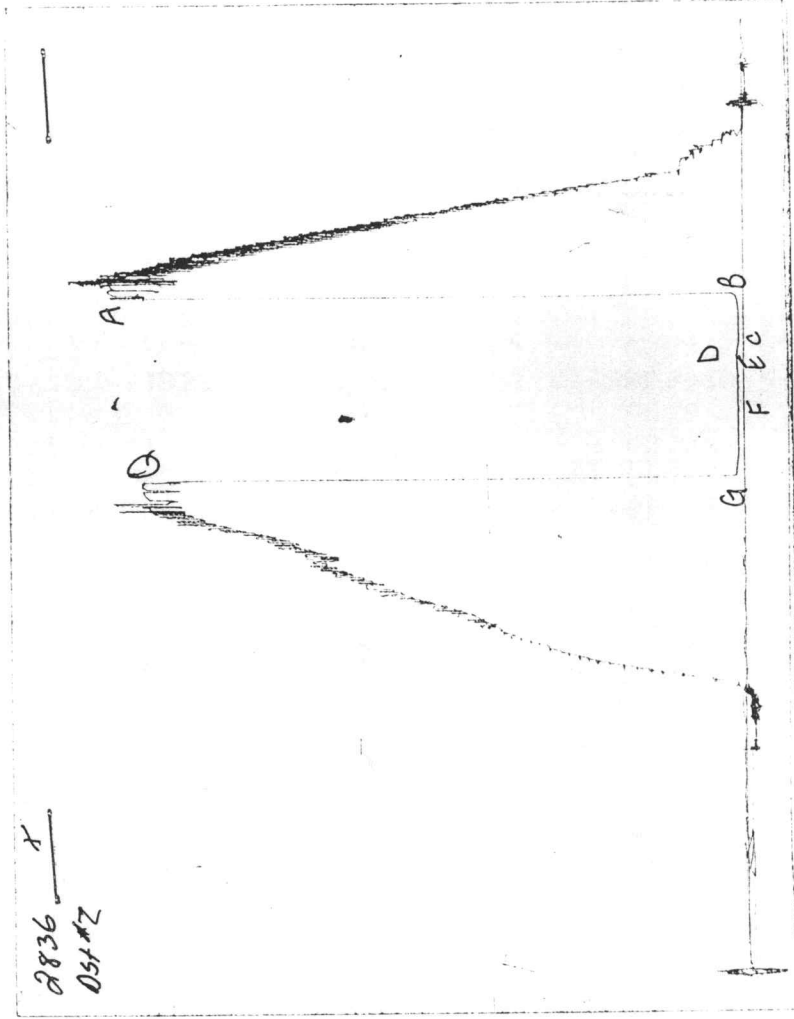


CHART PAGE



This is an actual photograph of recorder chart

 ALPINE SUBSURFACE ELECTRONICS PROBE INCREMENTS LISTING

TEST: 8246 DST.#2 McConnell #1-14 Berexco Inc.

DATE: 10/10/95 TIME: 11:37:47

	Time	Pressure PSI _g	delta P PSI _g	Temp. DEG F	(T+dT)/dT	P ² /10 ⁶
***** Initial Hydro.	134.00	2961.0	0.0	128.66		
***** Start Flow 1	0.00	36.8	0.0	131.72		
	2.00	37.4	0.6	132.26		
	4.00	37.6	0.8	132.62		
	6.00	37.8	0.9	132.80		
	8.00	37.9	1.1	132.98		
	10.00	38.1	1.3	133.16		
	12.00	38.2	1.3	133.16		
	14.00	38.3	1.4	133.16		
***** End Flow 1	16.00	39.4	2.6	133.34		
***** Start Shutin 1	0.00	39.4	0.0	133.34	0.0000	0.002
	2.00	42.0	2.6	133.34	9.0000	0.002
	4.00	44.7	5.3	133.34	5.0000	0.002
	6.00	47.5	8.1	133.34	3.6667	0.002
	8.00	50.6	11.2	133.52	3.0000	0.003
	10.00	53.8	14.4	133.52	2.6000	0.003
	12.00	57.2	17.8	133.52	2.3333	0.003
	14.00	60.9	21.5	133.70	2.1429	0.004
	16.00	65.0	25.5	133.70	2.0000	0.004
	18.00	69.3	29.9	133.88	1.8889	0.005
	20.00	74.2	34.7	133.88	1.8000	0.006
	22.00	79.6	40.2	134.06	1.7273	0.006
	24.00	85.4	46.0	134.06	1.6667	0.007
	26.00	92.2	52.8	134.24	1.6154	0.009
***** End Shut-in 1	28.00	99.5	60.1	134.24	1.5714	0.01
***** Start Flow 2	0.00	38.7	0.0	134.42		
	2.00	38.9	0.3	134.42		
	4.00	39.2	0.5	134.60		
	6.00	40.4	1.7	134.60		
	8.00	39.3	0.6	134.78		
	10.00	39.1	0.4	134.78		
	12.00	39.4	0.8	134.96		
	14.00	39.4	0.8	134.96		
	16.00	39.3	0.7	135.14		
	18.00	39.6	0.9	135.14		
	20.00	39.7	1.0	135.32		
	22.00	39.8	1.1	135.32		
	24.00	39.8	1.1	135.32		
	26.00	39.8	1.1	135.50		
	28.00	39.9	1.3	135.68		
***** End Flow 2	30.00	40.0	1.3	135.68		
***** Start Shutin 2	0.00	40.0	0.0	135.68	0.0000	0.002
	2.00	41.1	1.1	135.86	24.0000	0.002
	4.00	42.2	2.2	135.86	12.5000	0.002
	6.00	43.5	3.4	136.04	8.6667	0.002
	8.00	44.5	4.4	136.04	6.7500	0.002
	10.00	45.7	5.7	136.22	5.6000	0.002
	12.00	47.2	7.2	136.22	4.8333	0.002
	14.00	48.5	8.5	136.40	4.2857	0.002
	16.00	49.7	9.7	136.40	3.8750	0.002
	18.00	51.1	11.1	136.40	3.5556	0.003

 ALPINE SUBSURFACE ELECTRONICS PROBE INCREMENTS LISTING

TEST: 8246 DST.#2 McConnell #1-14 Berexco Inc.

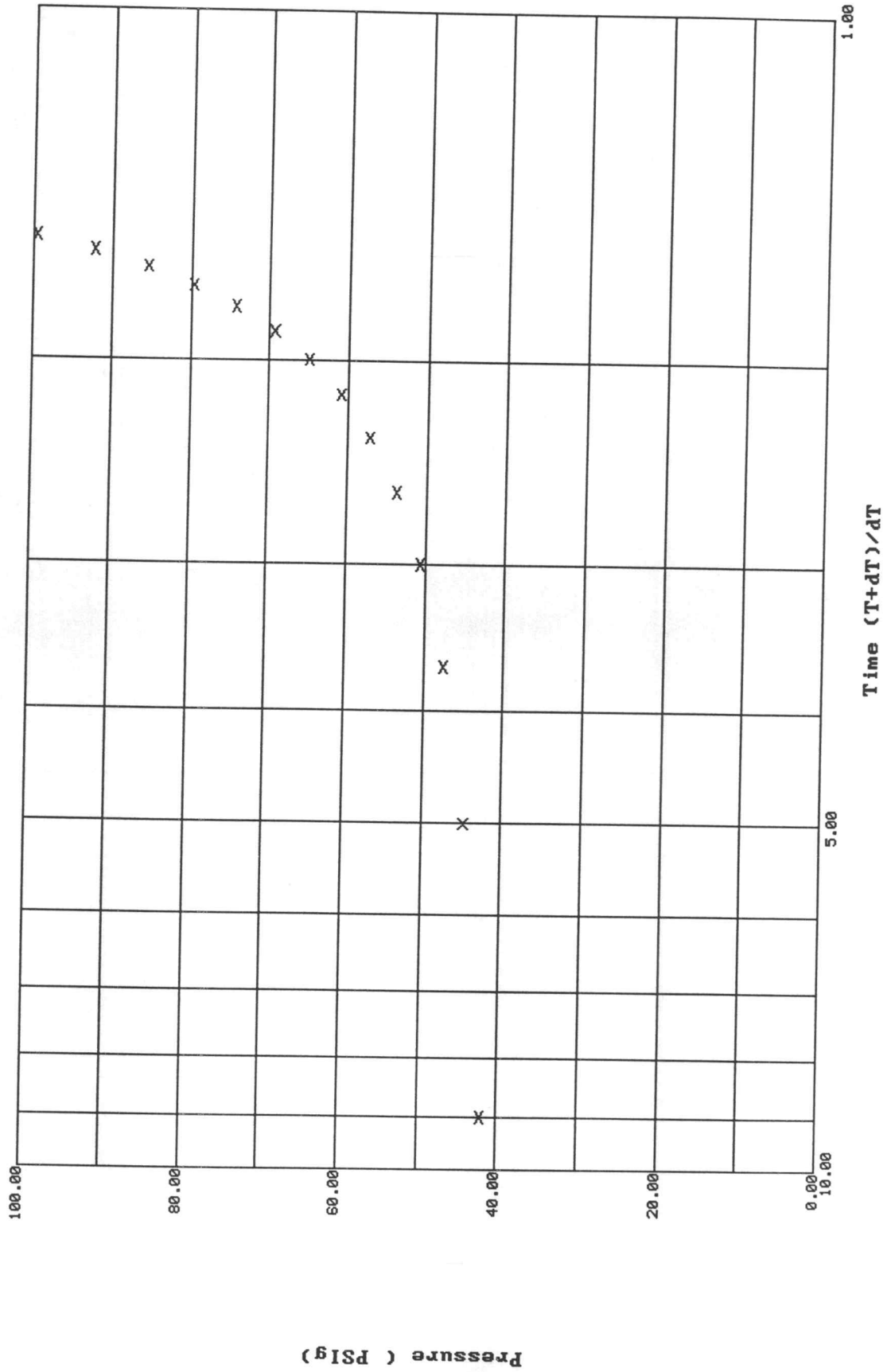
DATE: 10/10/95

TIME: 11:37:47

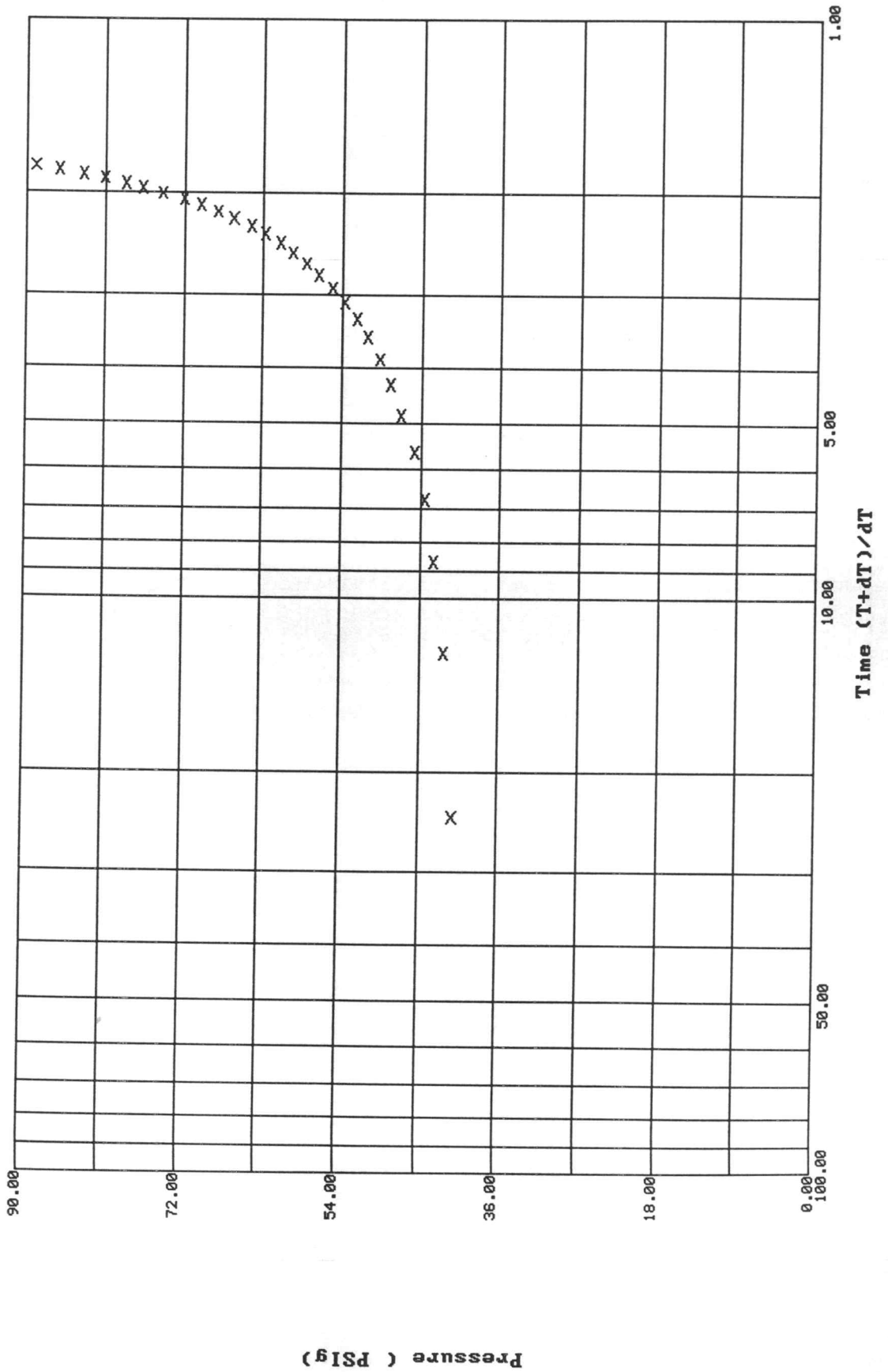
	Time	Pressure PSig	delta P PSig	Temp. DEG F	(T+dT)/dT	P ² /10 ⁶
	20.00	52.4	12.3	136.58	3.3000	0.003
	22.00	53.7	13.7	136.58	3.0909	0.003
	24.00	55.2	15.2	136.76	2.9167	0.003
	26.00	56.7	16.7	136.76	2.7692	0.003
	28.00	58.2	18.1	136.94	2.6429	0.003
	30.00	59.7	19.6	136.94	2.5333	0.004
	32.00	61.0	21.0	137.12	2.4375	0.004
	34.00	62.9	22.8	137.12	2.3529	0.004
	36.00	64.4	24.3	137.30	2.2778	0.004
	38.00	66.4	26.4	137.30	2.2105	0.004
	40.00	68.2	28.2	137.48	2.1500	0.005
	42.00	70.2	30.1	137.48	2.0952	0.005
	44.00	72.1	32.1	137.66	2.0455	0.005
	46.00	74.4	34.4	137.66	2.0000	0.006
	48.00	76.7	36.7	137.84	1.9583	0.006
	50.00	78.7	38.7	137.84	1.9200	0.006
	52.00	81.1	41.0	137.84	1.8846	0.007
	54.00	83.6	43.6	138.02	1.8519	0.007
	56.00	86.4	46.3	138.02	1.8214	0.007
***** End Shut-in 2	58.00	89.0	49.0	138.20	1.7931	0.008
***** Final Hydro.	282.00	2838.2	0.0	139.46		

Horner Plot: shut-in #1

8246 DST.#2 McConnell #1-14 Berexco Inc.



Horner Plot: shut-in #2
 8246 DST.#2 McConnell #1-14 Berexco Inc.



*** TOOL DIAGRAM *** CONVENTIONAL

WELL NAME: McConnell #1-14

LOCATION : 14-31S-36W

TICKET No. 8246 D.S.T. No. 2 DATE 10-10-95

TOTAL TOOL TO BOTTOM OF TOP PACKERS 22ft.

INTERVAL TOOL

BOTTOM PACKERS AND ANCHOR 30ft.

TOTAL TOOL 52ft.

DRILL COLLAR ANCHOR IN INTERVAL

D.C. ANCHOR STND.Stands Single Total

D.P. ANCHOR STND.Stands Single Total

TOTAL ASSEMBLY

D.C. ABOVE TOOLS.Stands7 Single Total 612ft.

D.P. ABOVE TOOLS.Stands50 Single 2 Total 5374ft.

TOTAL DRILL COLLARS DRILL PIPE & TOOLS .. 6038ft.

TOTAL DEPTH 6010ft.

TOTAL DRILL PIPE ABOVE K.B. 28ft.

REMARKS:

P.O. SUB 1ft. double pin	5958
C.O. SUB	
S.I. TOOL 5ft.	5959
HMV HYD. 5ft.	5964
JARS 5ft	5969
SAFETY JOINT 2ft.	5974
PACKER 5ft.	5976
PACKER 5ft.	5981
DEPTH 5985ft.	
STUBB	
ANCHOR	
3ft. perf	5986
6ft. pick up sub	5989
Alpine Rec.	5990
5ft. perf	5995
5ft. perf	6000
2ft. perf	6005
T.C.	
DEPTH	
AK-1 Rec.	6007
BULLNOSE	
T.D. 3ft. bull plug	6007

TRILOBITE TESTING L.L.C.

OPERATOR : Berexco Inc.
 WELL NAME: McConnell #1-14
 LOCATION : 14-31S-36W, Stevens KS
 INTERVAL : 5777.00 To 5880.00 ft

DATE 10-13-95
 KB 3046.00 ft TICKET NO: 8247 DST #3
 GR 0.00 ft FORMATION: Lower Morrow
 TD 6244.00 ft TEST TYPE: CONV. STRADDLE

RECORDER DATA

Mins	Field	1	2	3	4	TIME DATA-----
PF 15 Rec.	10333	10333	2342	2836		PF Fr. 0821 to 0836 hr
SI 30 Range(Psi)	4095.0	4095.0	4995.0	3500.0	0.0	IS Fr. 0836 to 0906 hr
SF 120 Clock(hrs)	AK-1	AK-1	Alpin	Strad		SF Fr. 0906 to 1106 hr
FS 120 Depth(ft)	5870.0	5870.0	5781.0	6241.0	0.0	FS Fr. 1106 to 1306 hr

	Field	1	2	3	4	
A. Init Hydro	2814.0	2827.0	2893.0	0.0	0.0	T STARTED 0520 hr
B. First Flow	142.0	152.0	92.0	0.0	0.0	T ON BOTM 0819 hr
B1. Final Flow	162.0	157.0	57.0	0.0	0.0	T OPEN 0821 hr
C. In Shut-in	111.0	185.0	196.0	0.0	0.0	T PULLED 1306 hr
D. Init Flow	111.0	134.0	52.0	0.0	0.0	T OUT 1650 hr
E. Final Flow	111.0	134.0	81.0	0.0	0.0	
F. Fl Shut-in	304.0	315.0	316.0	0.0	0.0	
G. Final Hydro	2443.0	2464.0	2825.0	0.0	0.0	TOOL DATA-----
Inside/Outside		I	O			Tool Wt. 18000.00 lbs

RECOVERY

Tot Fluid 100.00 ft of 100.00 ft in DC and 0.00 ft in DP
 100.00 ft of Drilling mud

Wt Set On Packer 20000.00 lbs
 Wt Pulled Loose 165000.00 lb
 Initial Str Wt 110000.00 lb
 Unseated Str Wt 90000.00 lbs
 Bot Choke 0.75 in
 Hole Size 7.88 in
 D Col. ID 2.25 in
 D. Pipe ID 3.88 in
 D.C. Length 179.00 ft
 D.P. Length 5591.00 ft

SALINITY 0.00 P.P.M. A.P.I. Gravity 0.00

BLOW DESCRIPTION

Initial Blow -
 Fair blow, bottom of bucket in 9 min

Initial Shutin -
 Bled off 2", surface blow back

Final Blow -
 Strong blow, bottom of bucket as soon as open tool

Final Shutin -
 Bled off 2", no blow back

MUD DATA-----

Mud Type Chemical
 Weight 9.00 lb/
 Vis. 50.00 S/L
 W.L. 9.40 in3
 F.C. 0.00 in
 Mud Drop Y 20.0 ft

Amt. of fill 0.00 ft
 Btm. H. Temp. 135.00 F
 Hole Condition Good
 % Porosity 0.00
 Packer Size 6.75 in
 No. of Packers 3
 Cushion Amt. 0.00
 Cushion Type
 Reversed Out
 Tool Chased
 Tester Mike Colantonio
 Co. Rep. Charle Spradling
 Contr. Beredco Drlg.
 Rig # 1
 Unit #
 Pump T.

SAMPLES:
 SENT TO:

Test Successful: Y

NATURAL GAS ANALYSIS REPORT

Sampled by:
Trilobite Testing, L.L.C.
Hays, Kansas
Scott City, Kansas
Phone: 800-728-5369
Fax: 913-625-5620

Analyzed by:
Caraway Analytical, L.L.C.
728 North Roosevelt
Liberal, Kansas 67901
Phone: 316-624-5389
Fax: 316-626-7108

Lab Number:	950552	Analyzed:	10/13/95
Sample From:	McConnell 1-14 DST 3	Pressure:	
Producer:	Berexco, Inc.	Temperature:	
Date:		Location:	14-31S-36W
Time:		County:	Stevens
Sampler:		State:	Kansas
Source:		Formation:	Morrow

	Mole %	GPM
Helium	He: 0.556	0.000
Oxygen	O2: 0.000	0.000
Nitrogen	N2: 11.804	0.000
Carbon Dioxide	CO2: 2.989	0.000
Methane	C1: 70.059	0.000
Ethane	C2: 6.956	1.860
Propane	C3: 2.519	0.694
Iso Butane	iC4: 1.507	0.493
Normal Butane	nC4: 1.613	0.509
Iso Pentane	iC5: 0.874	0.320
Normal Pentane	nC5: 0.833	0.302
Hexanes Plus	C6+: 0.290	0.127
TOTAL:	100.000	4.304
Z Fact:	0.9970	
SP.GR.:	0.7758	
BTU (SAT):	1065.8 @ 14.73 psia	
BTU (DRY):	1084.6 @ 14.73 psia	
OCTANE RATING:	105.0	

COMMENTS:

0.107

TEST HISTORY

8247 DST #3 McConnell #1-14 Berexco Inc.

Flag Points

t (Min.)	P (PSig)
A: 0.00	2892.98
B: 0.00	92.14
C: 14.00	56.98
D: 30.00	196.05
E: 0.00	52.03
F: 118.00	80.56
G: 122.00	316.06
Q: 0.00	2825.34

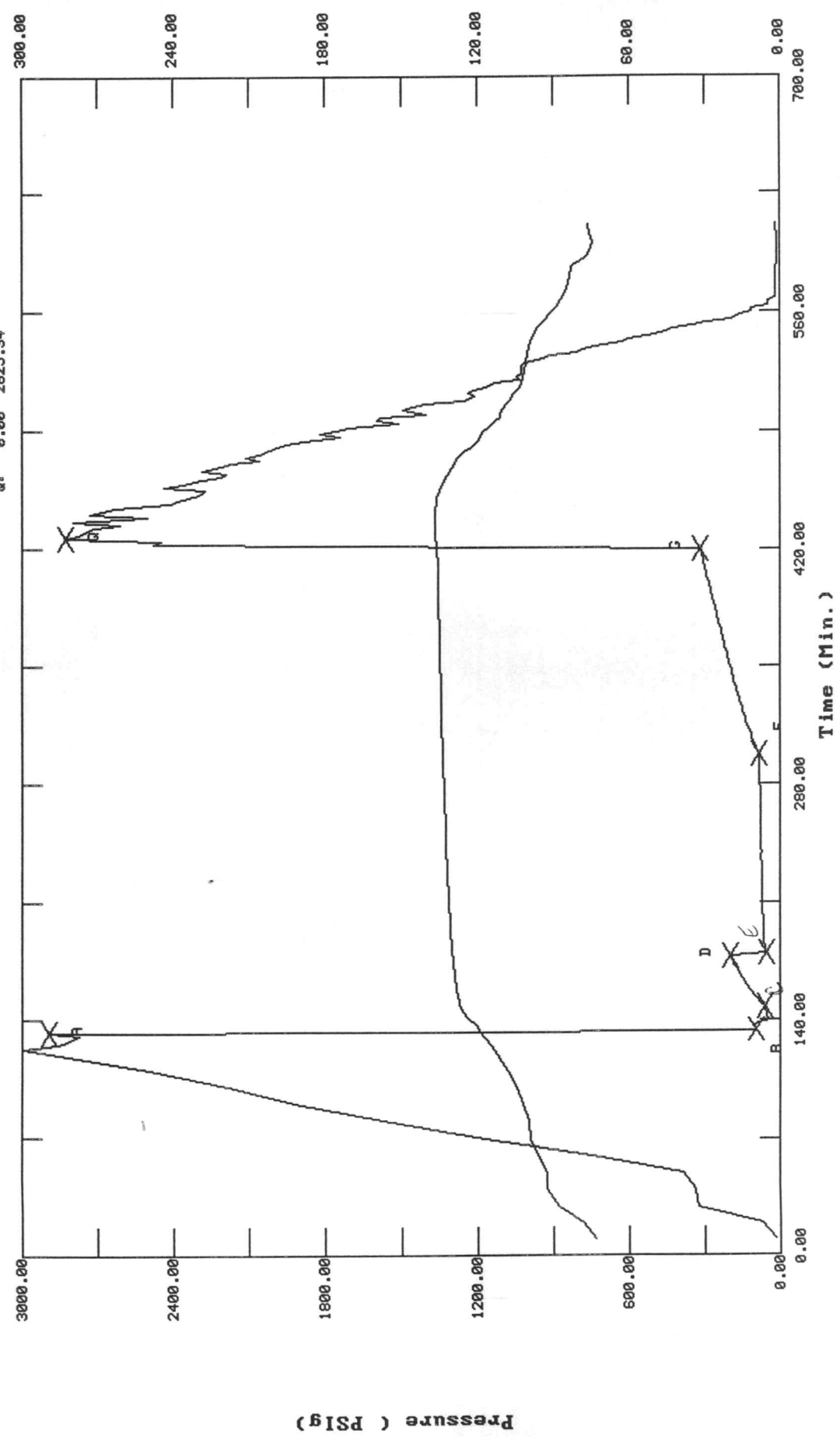
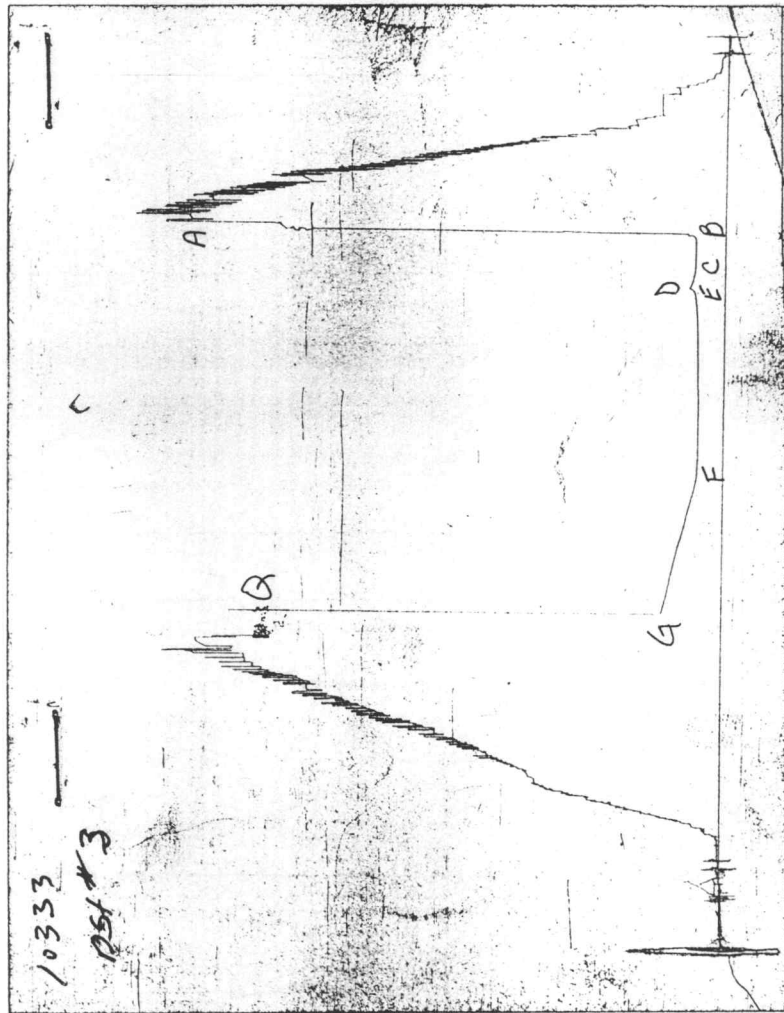
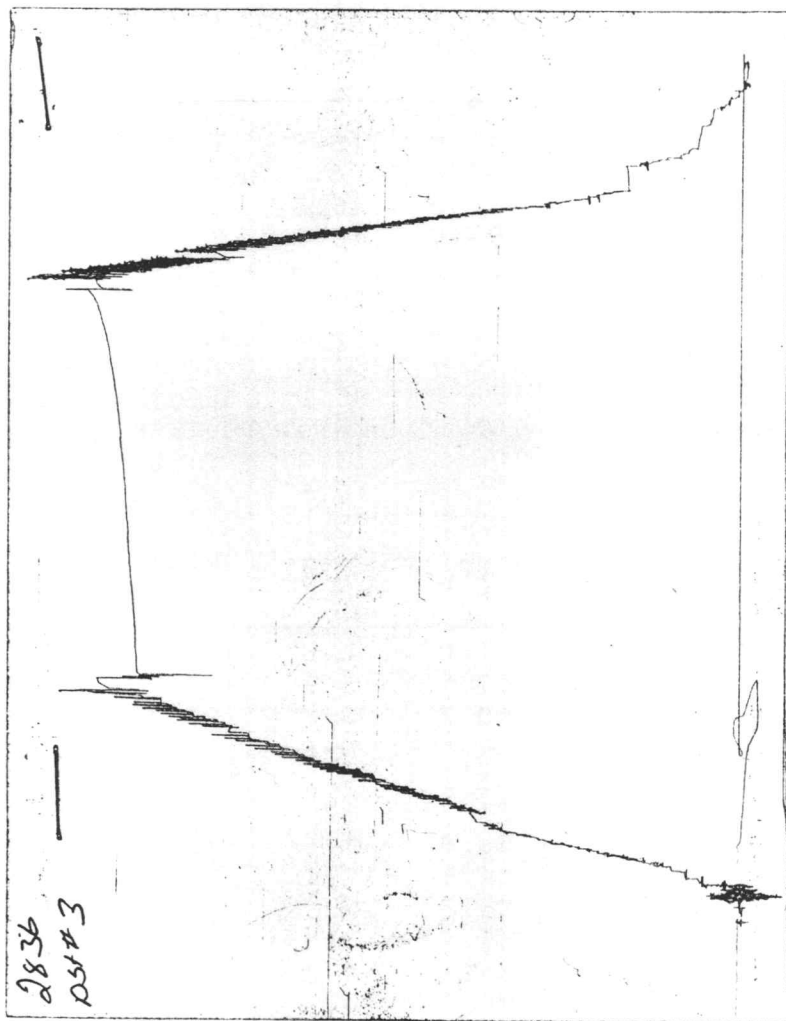


CHART PAGE



This is an actual photograph of recorder chart

CHART PAGE



This is an actual photograph of recorder chart

ALPINE SUBSURFACE ELECTRONICS PROBE INCREMENTS LISTING

TEST: 8247 DST #3 McConnell #1-14 Berexco Inc.

DATE: 10/13/95

TIME: 05:02:25

	Time	Pressure PSig	delta P PSig	Temp. DEG F	(T+dT)/dT	P ² /10 ⁶
***** Initial Hydro.	132.00	2893.0	0.0	118.40		
***** Start Flow 1	0.00	92.1	0.0	119.30		
	2.00	102.7	10.6	119.84		
	4.00	87.4	-4.8	121.10		
	6.00	38.8	-53.3	122.90		
	8.00	48.8	-43.3	124.34		
	10.00	54.0	-38.2	125.42		
	12.00	56.6	-35.5	126.14		
***** End Flow 1	14.00	57.0	-35.2	126.68		
***** Start Shutin 1	0.00	57.0	0.0	126.68	0.0000	0.003
	2.00	72.8	15.8	127.04	8.0000	0.005
	4.00	85.8	28.9	127.40	4.5000	0.007
	6.00	97.3	40.3	127.76	3.3333	0.009
	8.00	107.9	50.9	127.94	2.7500	0.012
	10.00	117.9	60.9	128.12	2.4000	0.014
	12.00	127.2	70.2	128.30	2.1667	0.016
	14.00	136.1	79.1	128.48	2.0000	0.019
	16.00	144.7	87.7	128.84	1.8750	0.021
	18.00	152.7	95.8	129.02	1.7778	0.023
	20.00	160.5	103.6	129.02	1.7000	0.026
	22.00	168.2	111.2	129.20	1.6364	0.028
	24.00	175.5	118.5	129.38	1.5833	0.031
	26.00	182.5	125.6	129.56	1.5385	0.033
	28.00	189.4	132.4	129.56	1.5000	0.036
***** End Shut-in 1	30.00	196.0	139.1	129.74	1.4667	0.038
***** Start Flow 2	0.00	52.0	0.0	129.92		
	2.00	57.2	5.2	129.92		
	4.00	60.3	8.3	130.10		
	6.00	61.6	9.6	130.10		
	8.00	61.3	9.2	130.28		
	10.00	61.8	9.8	130.46		
	12.00	63.6	11.6	130.46		
	14.00	64.5	12.5	130.64		
	16.00	65.4	13.3	130.64		
	18.00	65.4	13.3	130.82		
	20.00	66.2	14.2	130.82		
	22.00	66.3	14.3	131.00		
	24.00	67.2	15.2	131.00		
	26.00	66.9	14.9	131.18		
	28.00	67.6	15.6	131.18		
	30.00	68.5	16.4	131.18		
	32.00	68.2	16.2	131.36		
	34.00	69.2	17.2	131.36		
	36.00	69.7	17.6	131.54		
	38.00	69.7	17.7	131.54		
	40.00	70.2	18.1	131.54		
	42.00	69.9	17.9	131.72		
	44.00	70.7	18.7	131.72		
	46.00	71.0	19.0	131.90		
	48.00	71.7	19.7	131.90		
	50.00	71.5	19.5	131.90		

 ALPINE SUBSURFACE ELECTRONICS PROBE INCREMENTS LISTING

TEST: 8247 DST #3 McConnell #1-14 Berexco Inc.

DATE: 10/13/95

TIME: 05:02:25

	Time	Pressure PSIg	delta P PSIg	Temp. DEG F	(T+dT)/dT	P ² /10 ⁶
	52.00	71.7	19.6	132.08		
	54.00	71.7	19.7	132.08		
	56.00	72.8	20.7	132.08		
	58.00	73.9	21.9	132.26		
	60.00	72.6	20.6	132.26		
	62.00	74.3	22.2	132.26		
	64.00	73.7	21.7	132.44		
	66.00	73.5	21.5	132.44		
	68.00	74.4	22.4	132.44		
	70.00	75.0	23.0	132.62		
	72.00	74.5	22.5	132.62		
	74.00	75.8	23.8	132.62		
	76.00	75.4	23.3	132.80		
	78.00	75.4	23.4	132.80		
	80.00	76.0	24.0	132.80		
	82.00	76.3	24.3	132.80		
	84.00	76.7	24.7	132.98		
	86.00	77.1	25.1	132.98		
	88.00	75.9	23.9	132.98		
	90.00	77.0	25.0	133.16		
	92.00	75.8	23.8	133.16		
	94.00	77.2	25.2	133.16		
	96.00	77.0	25.0	133.16		
	98.00	77.8	25.8	133.34		
	100.00	78.7	26.7	133.34		
	102.00	79.1	27.1	133.34		
	104.00	79.3	27.3	133.34		
	106.00	79.3	27.3	133.52		
	108.00	79.9	27.9	133.52		
	110.00	78.9	26.9	133.52		
	112.00	80.6	28.6	133.52		
	114.00	79.5	27.4	133.70		
	116.00	79.1	27.0	133.70		
***** End Flow 2	118.00	80.6	28.5	133.70		
***** Start Shutin 2	0.00	80.6	0.0	133.70	0.0000	0.006
	2.00	87.7	7.1	133.70	67.0000	0.008
	4.00	93.4	12.8	133.88	34.0000	0.009
	6.00	98.8	18.2	133.88	23.0000	0.01
	8.00	104.2	23.7	133.88	17.5000	0.011
	10.00	109.5	29.0	133.88	14.2000	0.012
	12.00	114.4	33.8	134.06	12.0000	0.013
	14.00	119.3	38.8	134.06	10.4286	0.014
	16.00	124.0	43.5	134.06	9.2500	0.015
	18.00	128.7	48.2	134.06	8.3333	0.017
	20.00	133.2	52.6	134.06	7.6000	0.018
	22.00	137.6	57.1	134.24	7.0000	0.019
	24.00	142.0	61.4	134.24	6.5000	0.020
	26.00	146.1	65.5	134.24	6.0769	0.021
	28.00	150.4	69.8	134.24	5.7143	0.023
	30.00	154.5	73.9	134.42	5.4000	0.024
	32.00	158.5	78.0	134.42	5.1250	0.025

ALPINE SUBSURFACE ELECTRONICS PROBE INCREMENTS LISTING

TEST: 8247 DST #3 McConnell #1-14 Berexco Inc.

DATE: 10/13/95

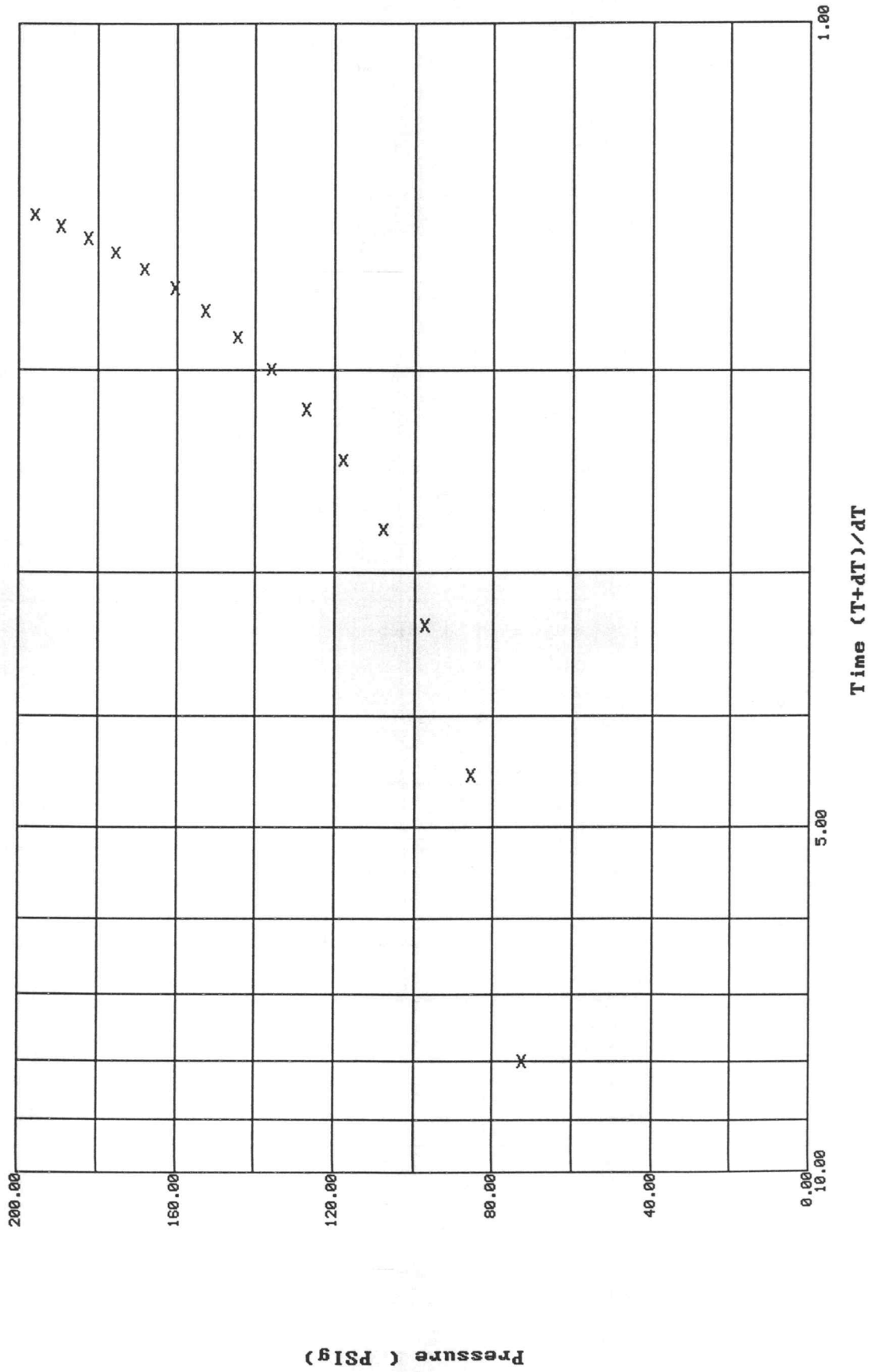
TIME: 05:02:25

Time	Pressure PSIg	delta P PSIg	Temp. DEG F	(T+dT)/dT	P ² /10 ⁶
34.00	162.6	82.0	134.42	4.8824	0.026
36.00	166.5	85.9	134.42	4.6667	0.028
38.00	170.2	89.6	134.42	4.4737	0.029
40.00	174.1	93.5	134.42	4.3000	0.030
42.00	177.8	97.3	134.60	4.1429	0.032
44.00	181.5	101.0	134.60	4.0000	0.033
46.00	185.2	104.7	134.60	3.8696	0.034
48.00	188.8	108.3	134.60	3.7500	0.036
50.00	192.6	112.0	134.78	3.6400	0.037
52.00	196.1	115.6	134.78	3.5385	0.038
54.00	199.7	119.1	134.78	3.4444	0.040
56.00	203.1	122.5	134.78	3.3571	0.041
58.00	206.6	126.1	134.78	3.2759	0.043
60.00	210.1	129.6	134.78	3.2000	0.044
62.00	213.6	133.0	134.96	3.1290	0.046
64.00	217.1	136.6	134.96	3.0625	0.047
66.00	220.6	140.1	134.96	3.0000	0.049
68.00	224.1	143.5	134.96	2.9412	0.050
70.00	227.5	147.0	134.96	2.8857	0.052
72.00	231.0	150.5	135.14	2.8333	0.053
74.00	234.5	153.9	135.14	2.7838	0.055
76.00	237.9	157.4	135.14	2.7368	0.057
78.00	241.4	160.8	135.14	2.6923	0.058
80.00	244.9	164.3	135.14	2.6500	0.060
82.00	248.2	167.7	135.32	2.6098	0.062
84.00	251.7	171.1	135.32	2.5714	0.063
86.00	255.1	174.6	135.32	2.5349	0.065
88.00	258.6	178.0	135.32	2.5000	0.067
90.00	262.1	181.5	135.32	2.4667	0.069
92.00	265.4	184.8	135.32	2.4348	0.070
94.00	268.7	188.2	135.32	2.4043	0.072
96.00	272.3	191.7	135.50	2.3750	0.074
98.00	275.5	195.0	135.50	2.3469	0.076
100.00	279.0	198.4	135.50	2.3200	0.078
102.00	282.3	201.8	135.50	2.2941	0.080
104.00	285.8	205.2	135.50	2.2692	0.082
106.00	289.2	208.6	135.68	2.2453	0.084
108.00	292.6	212.1	135.68	2.2222	0.086
110.00	295.9	215.4	135.68	2.2000	0.088
112.00	299.4	218.8	135.68	2.1786	0.090
114.00	302.6	222.0	135.68	2.1579	0.092
116.00	306.1	225.5	135.68	2.1379	0.094
118.00	309.4	228.9	135.86	2.1186	0.096
120.00	312.7	232.1	135.86	2.1000	0.098
122.00	316.1	235.5	135.86	2.0820	0.10

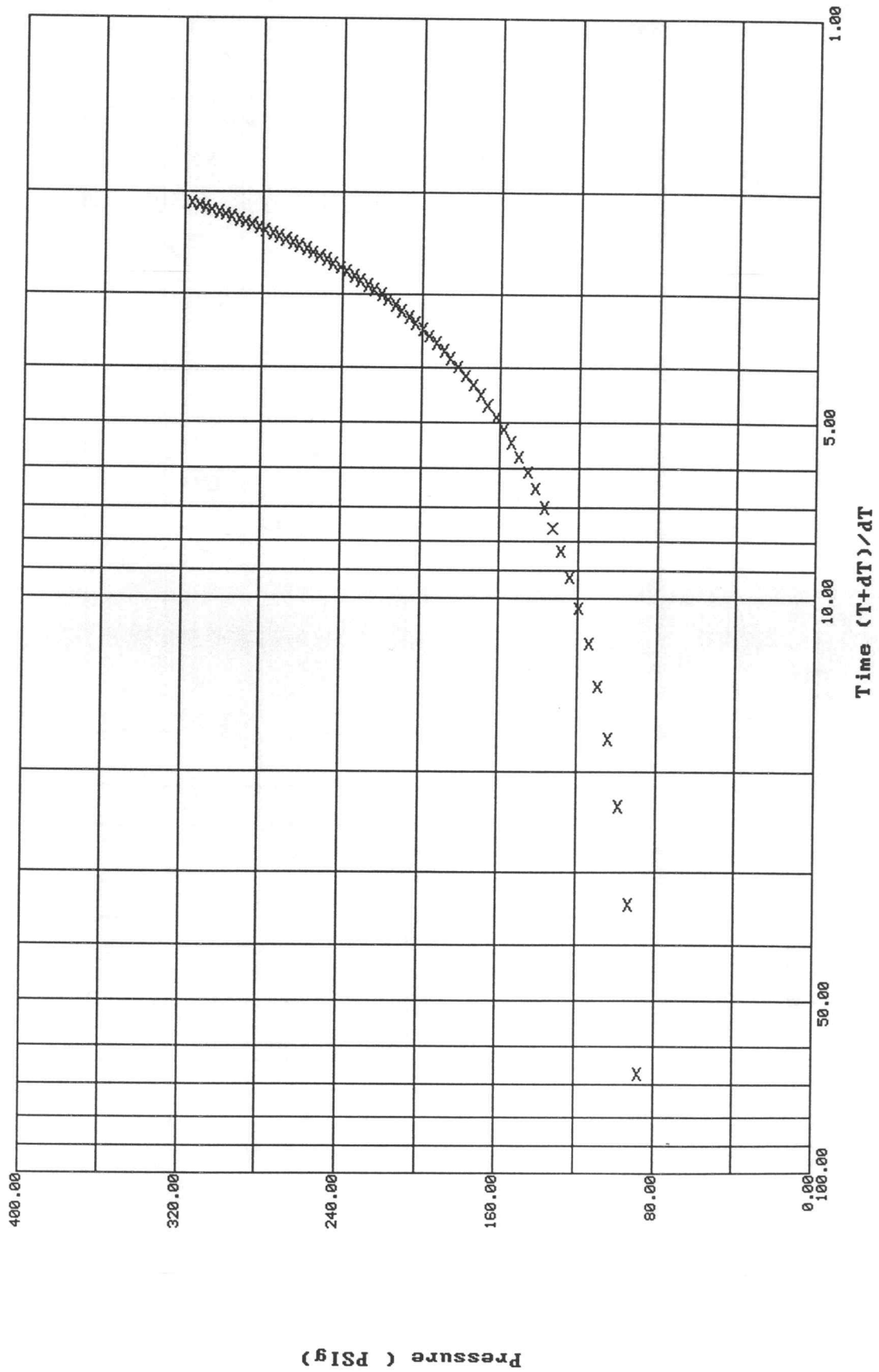
***** End Shut-in 2

***** Final Hydro. 426.00 2825.3 0.0 136.76

Horner Plot: shut-in #1
8247 DST #3 McConnell #1-14 Berexco Inc.



Horner Plot: shut-in #2
8247 DST #3 McConnell #1-14 Berexco Inc.



*** TOOL DIAGRAM *** CONV. STRADDLE

WELL NAME: McConnell #1-14

LOCATION : 14-31S-36W, Stevens KS

TICKET No. 8247 D.S.T. No. 3 DATE 10-13-95

TOTAL TOOL TO BOTTOM OF TOP PACKERS 34ft.

INTERVAL TOOL

BOTTOM PACKERS AND ANCHOR 26ft.

TOTAL TOOL 60ft.

DRILL COLLAR ANCHOR IN INTERVAL 520ft.

D.C. ANCHOR STND.Stands5 Single Total 433ft.

D.P. ANCHOR STND.Stands Single Total

TOTAL ASSEMBLY 493ft.

D.C. ABOVE TOOLS.Stands2 Single Total 179ft.

D.P. ABOVE TOOLS.Stands60 Single Total 5591ft.

TOTAL DRILL COLLARS DRILL PIPE & TOOLS .. 6263ft.

TOTAL DEPTH 6244ft.

TOTAL DRILL PIPE ABOVE K.B. 19ft.

REMARKS:

P.O. SUB	
C.O. SUB 1ft. c\o sub	5750
S.I. TOOL 5ft.	5751
HMV HYD. 5ft.	5756
JARS 5ft.	5761
SAFETY JOINT 2ft.	5766
PACKER 5ft.	5768
PACKER 5ft.	5773
DEPTH 5777ft.	
STUBB ANCHOR	
2ft. perf	5778
1ft. C\O sub	5780
Alpine Rec.	5781
87ft. collars	5781
1ft. C\O sub	5868
6ft. pick up sub	5869
AK-1 Rec.	5870
1ft. blank off sub	5875
T.C.	
DEPTH	
PACKER 5ft. Strattle pack	5876
5ft. perf	5881
5ft. perf	5886
1ft. C\O sub	5891
346ft. collars	5892
1ft. double pin	6238
1ft. hanging sub	6239
1ft. perf	6240
AK-1 Rec.	6241
BULLNOSE	
T.D. 3ft. bull plug	6241