

**WELL NAME:** Simpson A #1-4  
**COMPANY:** Dolomite Resources / McCoy Petroleum  
**LOCATION:** 4-31S-33W  
Seward County Kansas  
**DATE:** 0713/96

TRILOBITE TESTING L.L.C.

OPERATOR : Dolomite Resources/McCoy  
 WELL NAME: Simpson A #1-4  
 LOCATION : 4-31S-33W, Seward Cty KS  
 INTERVAL : 4162.00 To 4222.00 ft

DATE 7/5/96  
 KB 2930.00 ft  
 GR 2917.00 ft  
 TD 4222.00 ft  
 TICKET NO: 8987  
 DST #1  
 FORMATION: Lansing  
 TEST TYPE: CONV.

RECORDER DATA

Mins	Field	1	2	3	4	TIME DATA-----
PF 30 Rec.	11038	11038	3024			PF Fr. 0850 to 0920 hr
SI 60 Range(Psi )	5075.0	5075.0	4995.0	0.0	0.0	IS Fr. 0920 to 1020 hr
SF 30 Clock(hrs)	12 hr	12 hr	Alpin			SF Fr. 1020 to 1050 hr
FS 60 Depth(ft )	4219.0	4219.0	4171.0	0.0	0.0	FS Fr. 1050 to 1150 hr

	Field	1	2	3	4	
A. Init Hydro	1940.0	1941.0	1966.0	0.0	0.0	T STARTED 0630 hr
B. First Flow	41.0	39.0	23.0	0.0	0.0	T ON BOTM 0848 hr
B1. Final Flow	41.0	44.0	47.0	0.0	0.0	T OPEN 0850 hr
C. In Shut-in	1033.0	1031.0	1030.0	0.0	0.0	T PULLED 1150 hr
D. Init Flow	82.0	80.0	51.0	0.0	0.0	T OUT 1400 hr
E. Final Flow	82.0	82.0	73.0	0.0	0.0	
F. Fl Shut-in	995.0	1003.0	1003.0	0.0	0.0	
G. Final Hydro	1915.0	1913.0	1931.0	0.0	0.0	
Inside/Outside	2	0	I			

TOOL DATA-----

Tool Wt.	1800.00 lbs
Wt Set On Packer	25000.00 lbs
Wt Pulled Loose	105000.00 lbs
Initial Str Wt	100000.00 lbs
Unseated Str Wt	100000.00 lbs
Bot Choke	0.75 in
Hole Size	7.88 in
D Col. ID	2.25 in
D. Pipe ID	3.80 in
D.C. Length	331.00 ft
D.P. Length	3812.00 ft

RECOVERY  
 Tot Fluid 100.00 ft of 100.00 ft in DC and 0.00 ft in DP  
 100.00 ft of Drilling mud

SALINITY 0.00 P.P.M. A.P.I. Gravity 0.00

BLOW DESCRIPTION

Initial Flow -  
 Weak blow, built to 1"

Final Flow -  
 No blow, flushed tool, got surge, no  
 blow

MUD DATA-----

Mud Type	Chemical
Weight	9.00 lb/cf
Vis.	45.00 S/L
W.L.	10.00 in <sup>3</sup>
F.C.	0.00 in
Mud Drop Y	30.0 ft

Amt. of fill	0.00 ft
Btm. H. Temp.	114.00 F
Hole Condition	GOOD
% Porosity	0.00
Packer Size	6.75 in
No. of Packers	2
Cushion Amt.	0.00
Cushion Type	
Reversed Out N	
Tool Chased N	
Tester	TOM HORACEK
Co. Rep.	DAVE GOLDAK
Contr.	Sweetman Drlg.
Rig #	1
Unit #	
Pump T.	

SAMPLES: No  
 SENT TO:

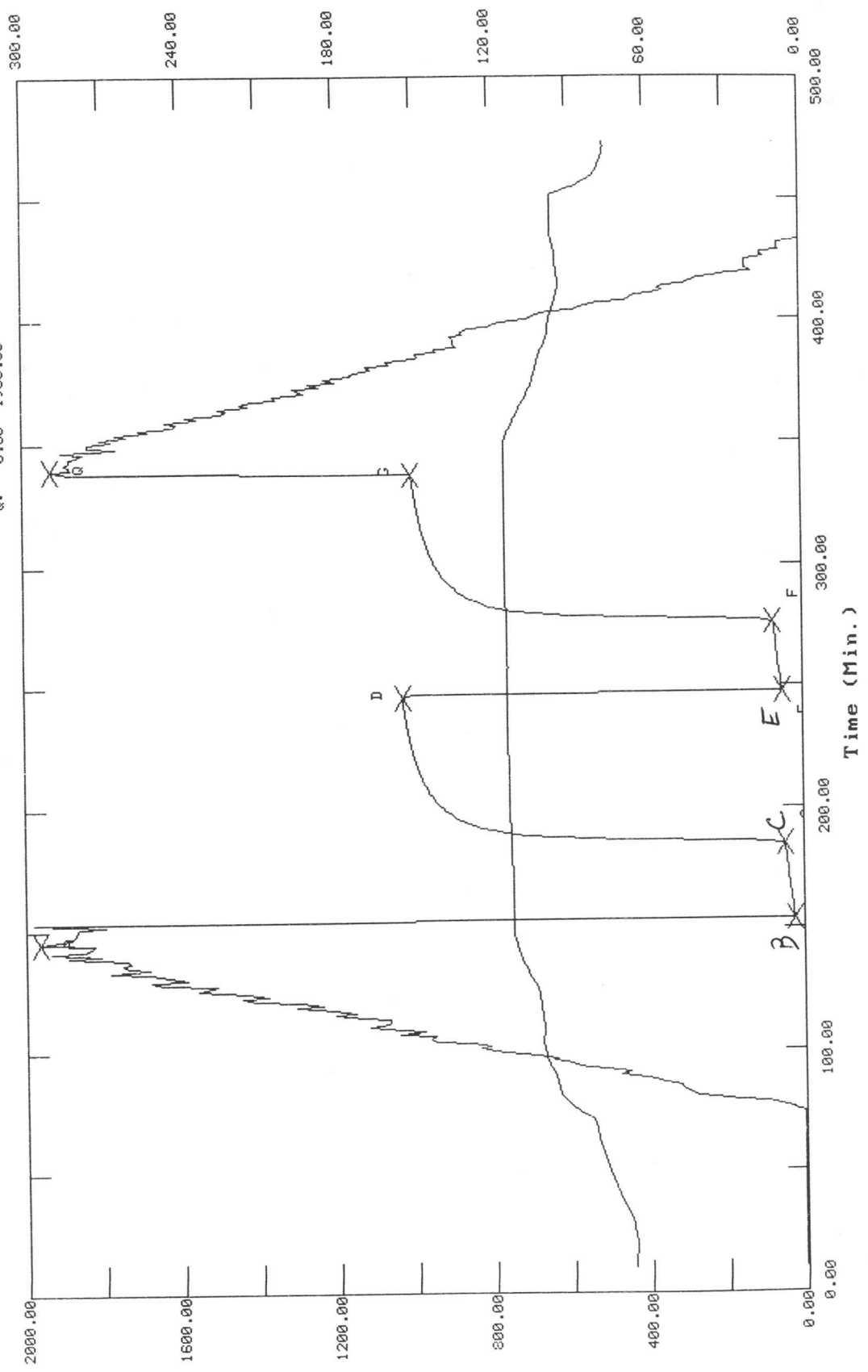
Test Successful: Y

# TEST HISTORY

B987 DST #1 Simpson "A" #1-4 Dolomite Res. & McCoy Pet.

## Flag Points

t (Min.)	P (PSig)
A: 0.00	1965.80
B: 0.00	22.67
C: 31.00	46.73
D: 61.00	1029.66
E: 0.00	51.19
F: 28.00	72.92
G: 61.00	1002.89
Q: 0.00	1930.63

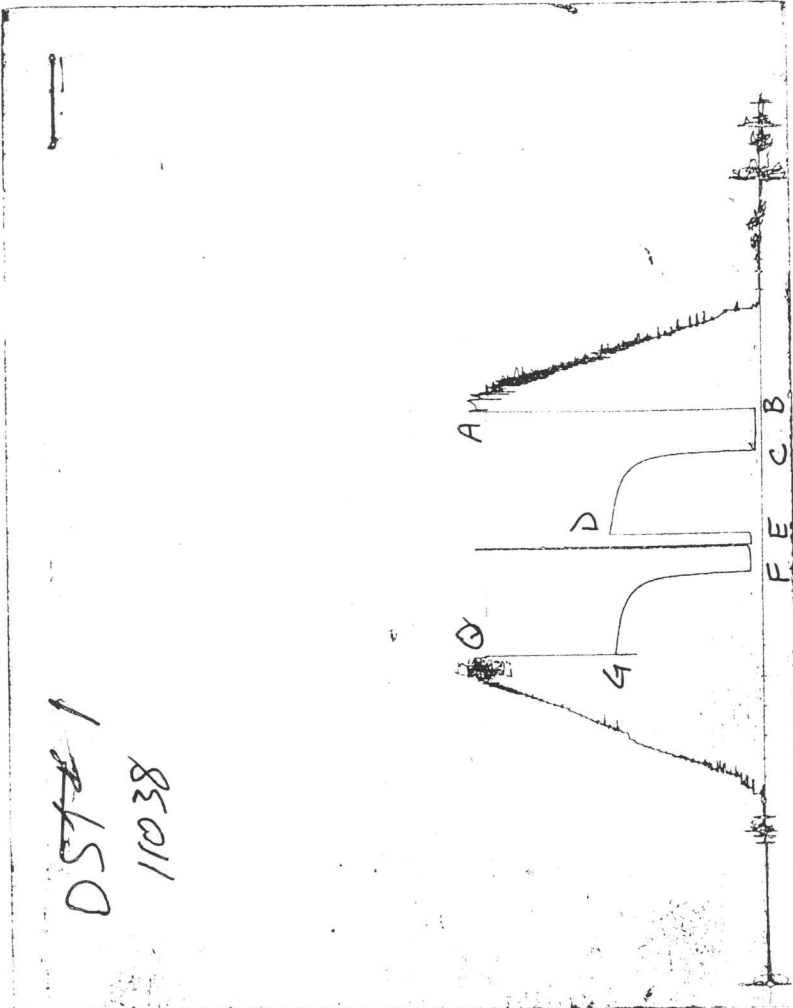


Temperature (DEG F)

Pressure (PSig)

CHART PAGE

057#1  
11038



This is a photocopy of the actual AK-1 recorder chart

ALPINE SUBSURFACE ELECTRONICS PROBE INCREMENTS LISTING

TEST: 8987 DST #1 Simpson "A" #1-4 Dolomite Res. & McCoy Pet.

DATE: 07/05/96 TIME: 06:17:01

	Time	Pressure PSig	delta P PSig	Temp. DEG F	(T+dT)/dT	P <sup>2</sup> /10 <sup>6</sup>
***** Initial Hydro.	145.00	1965.8	0.0	111.40		
***** Start Flow 1	0.00	22.7	0.0	112.34		
	1.00	23.5	0.8	112.34		
	2.00	24.5	1.8	112.30		
	3.00	24.7	2.1	112.26		
	4.00	25.6	2.9	112.22		
	5.00	26.3	3.6	112.19		
	6.00	27.2	4.6	112.17		
	7.00	28.4	5.7	112.17		
	8.00	29.6	6.9	112.17		
	9.00	30.1	7.4	112.16		
	10.00	30.7	8.0	112.17		
	11.00	31.6	9.0	112.18		
	12.00	32.4	9.8	112.20		
	13.00	33.2	10.6	112.21		
	14.00	34.0	11.3	112.23		
	15.00	35.0	12.3	112.24		
	16.00	35.9	13.2	112.27		
	17.00	36.7	14.0	112.28		
	18.00	37.7	15.0	112.31		
	19.00	38.7	16.0	112.33		
	20.00	39.3	16.6	112.35		
	21.00	40.0	17.4	112.38		
	22.00	40.3	17.6	112.40		
	23.00	41.0	18.3	112.44		
	24.00	41.8	19.2	112.45		
	25.00	42.6	19.9	112.49		
	26.00	43.1	20.5	112.50		
	27.00	43.9	21.2	112.52		
	28.00	44.6	21.9	112.55		
	29.00	45.4	22.7	112.58		
	30.00	45.9	23.2	112.60		
***** End Flow 1	31.00	46.7	24.1	112.63		
***** Start Shutin 1	0.00	46.7	0.0	112.63	0.0000	0.002
	1.00	147.8	101.0	112.65	32.0000	0.022
	2.00	469.2	422.5	112.69	16.5000	0.220
	3.00	631.0	584.3	112.72	11.3333	0.398
	4.00	714.2	667.5	112.76	8.7500	0.510
	5.00	764.9	718.2	112.81	7.2000	0.585
	6.00	799.7	753.0	112.87	6.1667	0.640
	7.00	825.7	779.0	112.91	5.4286	0.682
	8.00	846.2	799.4	112.96	4.8750	0.716
	9.00	863.9	817.1	113.00	4.4444	0.746
	10.00	877.9	831.1	113.04	4.1000	0.771
	11.00	889.9	843.1	113.08	3.8182	0.792
	12.00	900.3	853.6	113.11	3.5833	0.811
	13.00	909.6	862.8	113.13	3.3846	0.827
	14.00	917.8	871.1	113.18	3.2143	0.842
	15.00	925.2	878.5	113.20	3.0667	0.856
	16.00	931.9	885.1	113.21	2.9375	0.868
	17.00	938.0	891.2	113.24	2.8235	0.880

ALPINE SUBSURFACE ELECTRONICS PROBE INCREMENTS LISTING  
 TEST: 8987 DST #1 Simpson "A" #1-4 Dolomite Res. & McCoy Pet.  
 DATE: 07/05/96 TIME: 06:17:01

Time	Pressure PSig	delta P PSig	Temp. DEG F	(T+dT)/dT	P^2/10^6
18.00	943.5	896.8	113.26	2.7222	0.890
19.00	948.7	901.9	113.30	2.6316	0.900
20.00	953.4	906.7	113.32	2.5500	0.909
21.00	957.8	911.0	113.33	2.4762	0.917
22.00	961.8	915.1	113.35	2.4091	0.925
23.00	965.6	918.9	113.38	2.3478	0.932
24.00	969.2	922.5	113.39	2.2917	0.939
25.00	972.5	925.8	113.42	2.2400	0.946
26.00	975.7	928.9	113.44	2.1923	0.952
27.00	978.6	931.9	113.45	2.1481	0.958
28.00	981.4	934.7	113.47	2.1071	0.963
29.00	984.0	937.3	113.48	2.0690	0.968
30.00	986.5	939.8	113.50	2.0333	0.973
31.00	988.8	942.1	113.52	2.0000	0.978
32.00	991.1	944.4	113.54	1.9688	0.982
33.00	993.2	946.5	113.55	1.9394	0.987
34.00	995.3	948.6	113.56	1.9118	0.991
35.00	997.3	950.5	113.58	1.8857	0.995
36.00	999.1	952.4	113.60	1.8611	0.998
37.00	1000.9	954.2	113.61	1.8378	1.002
38.00	1002.6	955.9	113.62	1.8158	1.005
39.00	1004.3	957.5	113.63	1.7949	1.009
40.00	1005.9	959.1	113.64	1.7750	1.012
41.00	1007.4	960.7	113.66	1.7561	1.015
42.00	1008.9	962.1	113.67	1.7381	1.018
43.00	1010.3	963.6	113.69	1.7209	1.021
44.00	1011.7	965.0	113.70	1.7045	1.024
45.00	1013.1	966.4	113.71	1.6889	1.026
46.00	1014.3	967.6	113.72	1.6739	1.029
47.00	1015.6	968.9	113.74	1.6596	1.031
48.00	1016.8	970.1	113.75	1.6458	1.034
49.00	1018.0	971.3	113.76	1.6327	1.036
50.00	1019.1	972.4	113.77	1.6200	1.039
51.00	1020.2	973.5	113.78	1.6078	1.041
52.00	1021.3	974.6	113.79	1.5962	1.043
53.00	1022.3	975.6	113.81	1.5849	1.045
54.00	1023.4	976.6	113.81	1.5741	1.047
55.00	1024.3	977.6	113.82	1.5636	1.049
56.00	1025.2	978.5	113.83	1.5536	1.051
57.00	1026.2	979.5	113.84	1.5439	1.053
58.00	1027.1	980.4	113.85	1.5345	1.055
59.00	1028.0	981.3	113.87	1.5254	1.057
60.00	1028.8	982.1	113.88	1.5167	1.059
61.00	1029.7	982.9	113.88	1.5082	1.060
***** End Shut-in 1					
***** Start Flow 2					
0.00	51.2	0.0	113.90		
1.00	52.2	1.0	113.87		
2.00	53.0	1.8	113.82		
3.00	53.9	2.7	113.78		
4.00	54.7	3.5	113.75		
5.00	55.4	4.2	113.73		
6.00	56.0	4.8	113.70		

ALPINE SUBSURFACE ELECTRONICS PROBE INCREMENTS LISTING

TEST: 8987 DST #1 Simpson "A" #1-4 Dolomite Res. & McCoy Pet.

DATE: 07/05/96 TIME: 06:17:01

	Time	Pressure PSig	delta P PSig	Temp. DEG F	(T+dT)/dT	P <sup>2</sup> /10 <sup>6</sup>
	7.00	57.1	5.9	113.68		
	8.00	57.7	6.5	113.67		
	9.00	58.5	7.3	113.66		
	10.00	60.8	9.6	113.60		
	11.00	61.8	10.7	113.75		
	12.00	62.2	11.0	113.77		
	13.00	62.8	11.6	113.77		
	14.00	63.5	12.3	113.75		
	15.00	64.2	13.0	113.75		
	16.00	64.8	13.6	113.74		
	17.00	65.4	14.2	113.74		
	18.00	65.7	14.5	113.73		
	19.00	66.4	15.2	113.73		
	20.00	67.0	15.8	113.73		
	21.00	67.7	16.5	113.75		
	22.00	68.4	17.2	113.75		
	23.00	69.2	18.0	113.77		
	24.00	70.0	18.8	113.79		
	25.00	70.7	19.5	113.82		
	26.00	71.4	20.2	113.85		
	27.00	72.1	20.9	113.87		
*****	End Flow 2	28.00	72.9	21.7	113.88	
*****	Start Shutin 2	0.00	72.9	0.0	113.88	0.0000
		1.00	114.1	41.2	113.91	60.0000
		2.00	424.3	351.4	113.93	30.5000
		3.00	598.5	525.5	113.99	20.6667
		4.00	688.5	615.6	114.05	15.7500
		5.00	742.2	669.2	114.12	12.8000
		6.00	778.2	705.3	114.17	10.8333
		7.00	804.5	731.6	114.23	9.4286
		8.00	824.8	751.9	114.27	8.3750
		9.00	841.2	768.3	114.30	7.5556
		10.00	855.0	782.0	114.34	6.9000
		11.00	866.6	793.7	114.35	6.3636
		12.00	876.7	803.8	114.37	5.9167
		13.00	885.6	812.7	114.39	5.5385
		14.00	893.6	820.7	114.40	5.2143
		15.00	900.7	827.8	114.42	4.9333
		16.00	907.1	834.2	114.43	4.6875
		17.00	913.0	840.0	114.44	4.4706
		18.00	918.3	845.4	114.44	4.2778
		19.00	923.2	850.3	114.45	4.1053
		20.00	927.8	854.9	114.46	3.9500
		21.00	932.0	859.1	114.47	3.8095
		22.00	936.0	863.1	114.48	3.6818
		23.00	939.7	866.8	114.47	3.5652
		24.00	943.1	870.2	114.48	3.4583
		25.00	946.4	873.5	114.48	3.3600
		26.00	949.5	876.6	114.49	3.2692
		27.00	952.4	879.5	114.50	3.1852
		28.00	955.1	882.2	114.51	3.1071

ALPINE SUBSURFACE ELECTRONICS PROBE INCREMENTS LISTING

TEST: 8987 DST #1 Simpson "A" #1-4 Dolomite Res. & McCoy Pet.

DATE: 07/05/96

TIME: 06:17:01

Time	Pressure PSig	delta P PSig	Temp. DEG F	(T+dT)/dT	P <sup>2</sup> /10 <sup>6</sup>	
29.00	957.7	884.8	114.51	3.0345	0.917	
30.00	960.2	887.2	114.51	2.9667	0.922	
31.00	962.5	889.6	114.52	2.9032	0.926	
32.00	964.7	891.8	114.52	2.8438	0.931	
33.00	966.9	894.0	114.53	2.7879	0.935	
34.00	968.9	896.0	114.53	2.7353	0.939	
35.00	970.9	897.9	114.54	2.6857	0.943	
36.00	972.7	899.8	114.54	2.6389	0.946	
37.00	974.5	901.6	114.54	2.5946	0.950	
38.00	976.2	903.3	114.55	2.5526	0.953	
39.00	977.9	904.9	114.55	2.5128	0.956	
40.00	979.4	906.5	114.56	2.4750	0.959	
41.00	981.0	908.0	114.56	2.4390	0.962	
42.00	982.4	909.5	114.56	2.4048	0.965	
43.00	983.8	910.9	114.56	2.3721	0.968	
44.00	985.2	912.3	114.57	2.3409	0.971	
45.00	986.5	913.6	114.59	2.3111	0.973	
46.00	987.8	914.8	114.59	2.2826	0.976	
47.00	989.0	916.1	114.59	2.2553	0.978	
48.00	990.2	917.3	114.59	2.2292	0.981	
49.00	991.4	918.4	114.60	2.2041	0.983	
50.00	992.5	919.5	114.60	2.1800	0.985	
51.00	993.5	920.6	114.60	2.1569	0.987	
52.00	994.6	921.7	114.61	2.1346	0.989	
53.00	995.6	922.7	114.61	2.1132	0.991	
54.00	996.6	923.7	114.62	2.0926	0.993	
55.00	997.6	924.7	114.63	2.0727	0.995	
56.00	998.5	925.6	114.63	2.0536	0.997	
57.00	999.4	926.5	114.63	2.0351	0.999	
58.00	1000.3	927.4	114.64	2.0172	1.001	
59.00	1001.2	928.3	114.64	2.0000	1.002	
60.00	1002.1	929.1	114.65	1.9833	1.004	
***** End Shut-in 2	61.00	1002.9	930.0	114.65	1.9672	1.006
***** Final Hydro.	339.00	1930.6	0.0	114.68		

\*\*\* TOOL DIAGRAM \*\*\* CONV.

WELL NAME: Simpson A #1-4

LOCATION : 4-31S-33W, Seward Cty KS

TICKET No. 8987 D.S.T. No. 1 DATE 7/5/96

TOTAL TOOL TO BOTTOM OF TOP PACKERS ..... 27

INTERVAL TOOL .....

BOTTOM PACKERS AND ANCHOR ..... 29

TOTAL TOOL ..... 56

DRILL COLLAR ANCHOR IN INTERVAL .....

T.C. ANCHOR STND.Stands Single 1 Total 31

P. ANCHOR STND.Stands Single Total

TOTAL ASSEMBLY ..... 87

T.C. ABOVE TOOLS.Stands3 Single 2 Total 331

P. ABOVE TOOLS.Stands40 Single 1 Total 3812

TOTAL DRILL COLLARS DRILL PIPE & TOOLS .. 4230

TOTAL DEPTH ..... 4222

TOTAL DRILL PIPE ABOVE K.B. .... 8

REMARKS:

P.O. SUB	
C.O. SUB	4135
S.I. TOOL	4141
HMV Hyd. Tool	4146
JARS	4151
SAFETY JOINT	4153
PACKER	4157
PACKER	4162
DEPTH 4162	
STUBB Perf 3 ft.	4165
ANCHOR Pick up sub 5 ft.	4170
Alpine Rec. @	4171
Perf 5 ft.	4175
Perf 5 ft.	4180
perf 4 ft	4184
C.O. sub 1 ft	4185
T.C.	
DEPTH	
Drill Collar 31 ft	4216
C.O. sub 1 ft	4217
AK-1 recorder.	4219
BULLNOSE Bull Plug 5 ft	
T.D.	4222

TRILOBITE TESTING L.L.C.

OPERATOR : Dolomite Resources/McCoy  
 WELL NAME: Simpson A #1-4  
 LOCATION : 4-31S-33W, Seward Cty KS  
 INTERVAL : 4828.00 To 4855.00 ft

DATE 7/7/96  
 KB 2930.00 ft TICKET NO: 8988 DST #2  
 GR 2917.00 ft FORMATION: Marmaton  
 TD 4855.00 ft TEST TYPE: CONV.

RECORDER DATA

Mins	Field	1	2	3	4	TIME DATA-----
PF 30 Rec.	11038	11038	3024			PF Fr. 1530 to 1600 hr
SI 45 Range(Psi )	5075.0	5075.0	4995.0	0.0	0.0	IS Fr. 1600 to 1645 hr
SF 30 Clock(hrs)	12 hr	12 hr	Alpin			SF Fr. 1645 to 1715 hr
FS 60 Depth(ft )	48520.0	4852.0	4837.0	0.0	0.0	FS Fr. 1715 to 1815 hr

	Field	1	2	3	4	
A. Init Hydro	24390.0	2429.0	2424.0	0.0	0.0	T STARTED 1340 hr
B. First Flow	68.0	82.0	22.0	0.0	0.0	T ON BOTM 1528 hr
B1. Final Flow	82.0	98.0	38.0	0.0	0.0	T OPEN 1530 hr
C. In Shut-in	1373.0	1393.0	1384.0	0.0	0.0	T PULLED 1815 hr
D. Init Flow	82.0	98.0	42.0	0.0	0.0	T OUT 2010 hr
E. Final Flow	82.0	98.0	48.0	0.0	0.0	
F. Fl Shut-in	1385.0	1403.0	1393.0	0.0	0.0	
G. Final Hydro	2374.0	2383.0	2405.0	0.0	0.0	
Inside/Outside	O	O	I			

TOOL DATA-----

Tool Wt.	1800.00 lbs
Wt Set On Packer	25000.00 lbs
Wt Pulled Loose	105000.00 lbs
Initial Str Wt	100000.00 lbs
Unseated Str Wt	103000.00 lbs
Bot Choke	0.75 in
Hole Size	7.88 in
D Col. ID	2.25 in
D. Pipe ID	3.80 in
D.C. Length	272.00 ft
D.P. Length	4534.00 ft

RECOVERY

Tot Fluid 15.00 ft of 15.00 ft in DC and 0.00 ft in DP  
 15.00 ft of Drilling mud

SALINITY 0.00 P.P.M. A.P.I. Gravity 0.00

BLOW DESCRIPTION

Initial Flow -  
 No blow, flushed tool, got surge,  
 no blow

Final Flow -  
 No blow

SAMPLES: No  
 SENT TO:

MUD DATA-----

Mud Type	Chemical
Weight	9.00 lb/cf
Vis.	47.00 S/L
W.L.	11.20 in3
F.C.	0.00 in
Mud Drop N	
Amt. of fill	0.00 ft
Btm. H. Temp.	123.00 F
Hole Condition	GOOD
% Porosity	0.00
Packer Size	6.75 in
No. of Packers	2
Cushion Amt.	0.00
Cushion Type	
Reversed Out N	
Tool Chased N	
Tester	TOM HORACEK
Co. Rep.	DAVE GOLDAK
Contr.	Sweetman Drlg.
Rig #	1
Unit #	
Pump T.	

Test Successful: Y

# TEST HISTORY

8988 DST #2 Simpson "A" #1-4 Dolomite Res. & McCoy Pet.

## Flag Points

t (Min.)	P (PSig)
A: 0.00	2424.08
B: 0.00	22.39
C: 31.00	37.94
D: 44.00	1383.59
E: 0.00	41.54
F: 31.00	48.41
G: 59.00	1392.60
Q: 0.00	2405.34

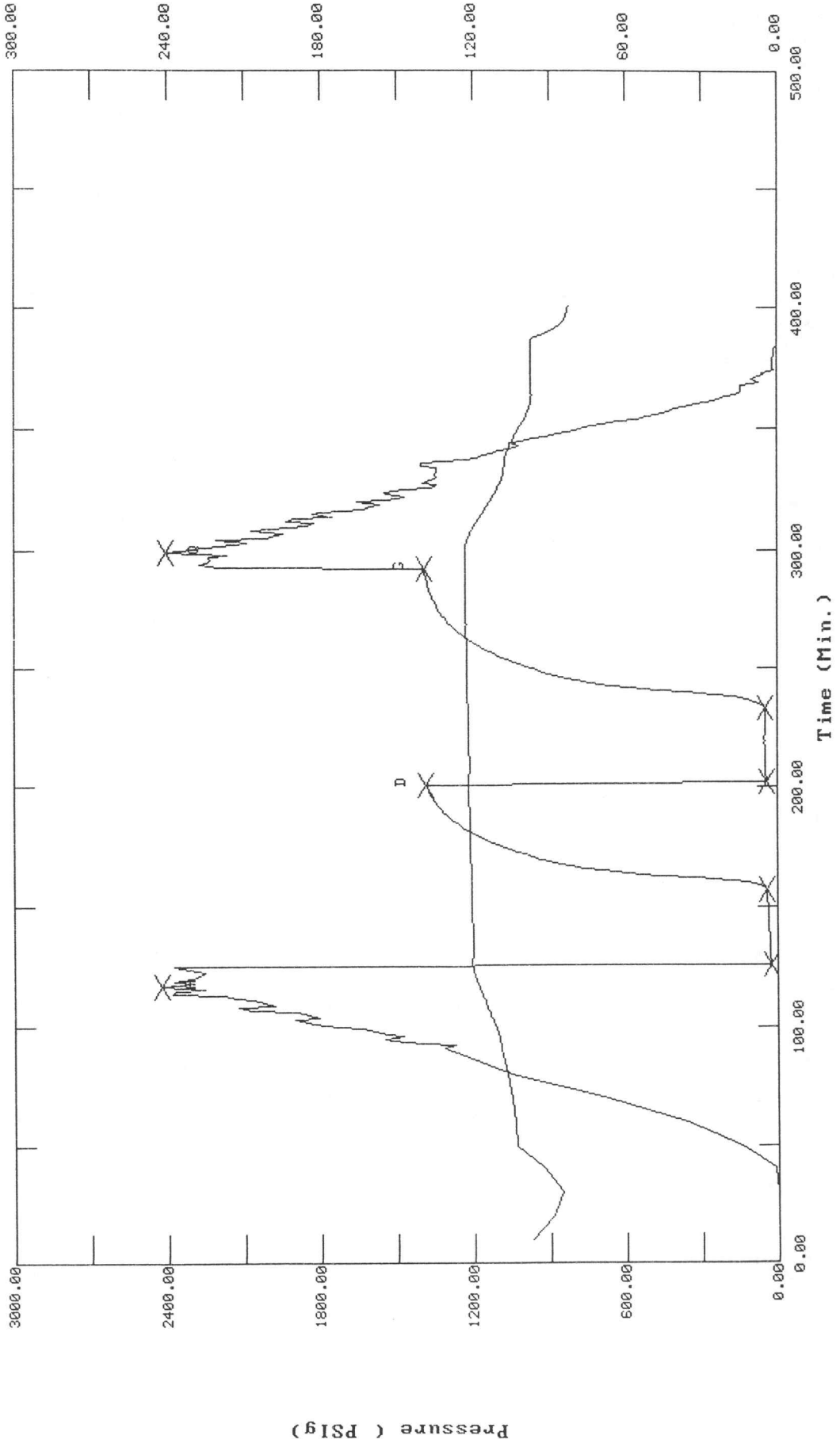
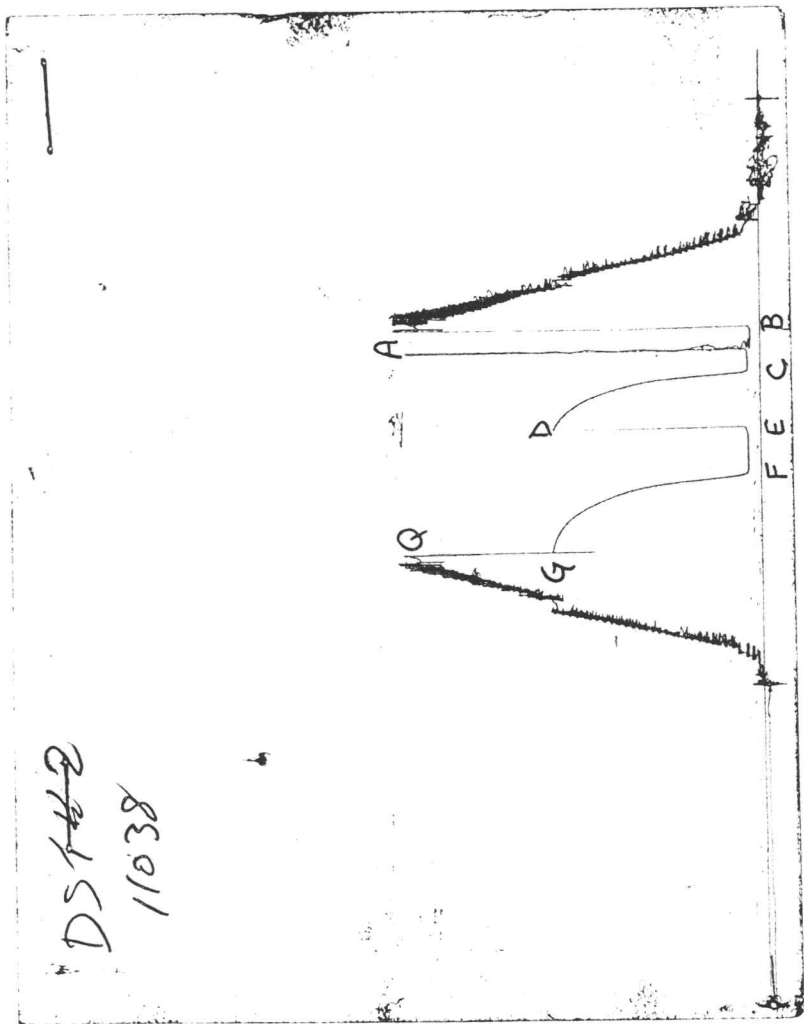


CHART PAGE



This is a photocopy of the actual AK-1 recorder chart

ALPINE SUBSURFACE ELECTRONICS PROBE INCREMENTS LISTING

TEST: 8988 DST #2 Simpson "A" #1-4 Dolomite Res.& McCoy Pet.

DATE: 07/07/96 TIME: 13:21:48

	Time	Pressure PSIg	delta P PSIg	Temp. DEG F	(T+dT)/dT	P^2/10^6
***** Initial Hydro.	117.00	2424.1	0.0	117.68		
***** Start Flow 1	0.00	22.4	0.0	120.29		
	1.00	23.5	1.1	120.31		
	2.00	24.3	1.9	120.26		
	3.00	25.1	2.7	120.21		
	4.00	25.8	3.4	120.15		
	5.00	26.4	4.0	120.11		
	6.00	26.9	4.5	120.07		
	7.00	27.4	5.0	120.05		
	8.00	28.0	5.6	120.03		
	9.00	28.4	6.0	120.02		
	10.00	28.6	6.2	120.02		
	11.00	29.0	6.6	120.02		
	12.00	29.5	7.1	120.03		
	13.00	30.2	7.8	120.05		
	14.00	30.6	8.3	120.06		
	15.00	30.9	8.5	120.07		
	16.00	31.3	8.9	120.08		
	17.00	33.5	11.1	120.13		
	18.00	33.7	11.4	120.25		
	19.00	34.3	11.9	120.27		
	20.00	34.8	12.4	120.27		
	21.00	35.3	12.9	120.27		
	22.00	35.6	13.2	120.27		
	23.00	36.0	13.6	120.27		
	24.00	36.3	13.9	120.30		
	25.00	36.4	14.0	120.30		
	26.00	36.7	14.3	120.32		
	27.00	37.0	14.6	120.33		
	28.00	37.3	14.9	120.35		
	29.00	37.7	15.3	120.37		
	30.00	38.0	15.6	120.38		
***** End Flow 1	31.00	37.9	15.5	120.41		
***** Start Shutin 1	0.00	37.9	0.0	120.41	0.0000	0.001
	1.00	50.6	12.7	120.43	32.0000	0.003
	2.00	71.3	33.3	120.45	16.5000	0.005
	3.00	108.9	71.0	120.47	11.3333	0.012
	4.00	182.8	144.8	120.50	8.7500	0.033
	5.00	313.3	275.4	120.53	7.2000	0.098
	6.00	469.8	431.8	120.55	6.1667	0.221
	7.00	595.1	557.1	120.59	5.4286	0.354
	8.00	688.9	650.9	120.64	4.8750	0.475
	9.00	758.9	721.0	120.68	4.4444	0.576
	10.00	813.1	775.2	120.73	4.1000	0.661
	11.00	857.7	819.8	120.78	3.8182	0.736
	12.00	896.6	858.7	120.82	3.5833	0.804
	13.00	932.0	894.1	120.86	3.3846	0.869
	14.00	964.9	927.0	120.90	3.2143	0.931
	15.00	995.9	957.9	120.93	3.0667	0.992
	16.00	1025.1	987.2	120.96	2.9375	1.051
	17.00	1052.9	1014.9	121.00	2.8235	1.109

-----  
 ALPINE SUBSURFACE ELECTRONICS PROBE INCREMENTS LISTING

TEST: 8988 DST #2 Simpson "A" #1-4 Dolomite Res.& McCoy Pet.  
 DATE: 07/07/96 TIME: 13:21:48  
 -----

Time	Pressure PSig	delta P PSig	Temp. DEG F	(T+dT)/dT	P <sup>2</sup> /10 <sup>6</sup>
18.00	1079.1	1041.2	121.03	2.7222	1.164
19.00	1103.9	1066.0	121.06	2.6316	1.219
20.00	1127.4	1089.4	121.09	2.5500	1.271
21.00	1149.4	1111.5	121.11	2.4762	1.321
22.00	1170.1	1132.1	121.14	2.4091	1.369
23.00	1189.4	1151.5	121.17	2.3478	1.415
24.00	1207.5	1169.6	121.19	2.2917	1.458
25.00	1224.3	1186.4	121.21	2.2400	1.499
26.00	1240.0	1202.0	121.24	2.1923	1.538
27.00	1254.6	1216.6	121.27	2.1481	1.574
28.00	1268.0	1230.1	121.28	2.1071	1.608
29.00	1280.4	1242.5	121.30	2.0690	1.640
30.00	1291.9	1254.0	121.33	2.0333	1.669
31.00	1302.5	1264.6	121.34	2.0000	1.696
32.00	1312.2	1274.3	121.36	1.9688	1.722
33.00	1321.2	1283.3	121.38	1.9394	1.746
34.00	1329.6	1291.6	121.40	1.9118	1.768
35.00	1337.2	1299.3	121.43	1.8857	1.788
36.00	1344.2	1306.3	121.43	1.8611	1.807
37.00	1350.7	1312.7	121.45	1.8378	1.824
38.00	1356.6	1318.6	121.47	1.8158	1.840
39.00	1362.0	1324.1	121.48	1.7949	1.855
40.00	1367.0	1329.1	121.50	1.7750	1.869
41.00	1371.7	1333.8	121.51	1.7561	1.882
42.00	1376.0	1338.1	121.53	1.7381	1.893
43.00	1380.0	1342.0	121.54	1.7209	1.904
44.00	1383.6	1345.7	121.57	1.7045	1.914
***** End Shut-in 1					
***** Start Flow 2	0.00	41.5	0.0	121.61	
	1.00	42.1	0.5	121.59	
	2.00	42.5	0.9	121.53	
	3.00	43.4	1.9	121.44	
	4.00	43.8	2.3	121.38	
	5.00	44.5	3.0	121.33	
	6.00	45.5	3.9	121.28	
	7.00	46.9	5.4	121.26	
	8.00	47.1	5.6	121.25	
	9.00	46.7	5.2	121.27	
	10.00	47.1	5.5	121.34	
	11.00	47.6	6.1	121.41	
	12.00	48.5	6.9	121.46	
	13.00	47.4	5.9	121.51	
	14.00	48.1	6.5	121.56	
	15.00	48.2	6.6	121.60	
	16.00	49.0	7.4	121.65	
	17.00	48.6	7.0	121.69	
	18.00	49.8	8.2	121.72	
	19.00	48.7	7.2	121.74	
	20.00	48.0	6.4	121.78	
	21.00	46.5	5.0	121.80	
	22.00	46.0	4.5	121.83	
	23.00	46.1	4.6	121.85	

ALPINE SUBSURFACE ELECTRONICS PROBE INCREMENTS LISTING

TEST: 8988 DST #2 Simpson "A" #1-4 Dolomite Res.& McCoy Pet.

DATE: 07/07/96 TIME: 13:21:48

	Time	Pressure PSIg	delta P PSIg	Temp. DEG F	(T+dT)/dT	P^2/10^6
	24.00	45.9	4.4	121.85		
	25.00	45.8	4.3	121.87		
	26.00	45.8	4.3	121.89		
	27.00	46.2	4.7	121.91		
	28.00	46.2	4.7	121.92		
	29.00	47.2	5.6	121.94		
	30.00	47.8	6.3	121.96		
*****	End Flow 2	31.00	48.4	6.9	121.97	
*****	Start Shutin 2	0.00	48.4	0.0	121.97	0.0000
	1.00	54.1	5.6	121.98	63.0000	0.003
	2.00	68.3	19.9	122.01	32.0000	0.005
	3.00	88.8	40.4	122.03	21.6667	0.008
	4.00	120.3	71.9	122.06	16.5000	0.014
	5.00	170.3	121.9	122.07	13.4000	0.029
	6.00	248.3	199.9	122.10	11.3333	0.062
	7.00	356.0	307.6	122.13	9.8571	0.127
	8.00	475.0	426.6	122.18	8.7500	0.226
	9.00	580.4	531.9	122.21	7.8889	0.337
	10.00	666.3	617.8	122.25	7.2000	0.444
	11.00	734.1	685.7	122.29	6.6364	0.539
	12.00	789.1	740.7	122.33	6.1667	0.623
	13.00	834.5	786.1	122.36	5.7692	0.696
	14.00	873.2	824.8	122.38	5.4286	0.762
	15.00	907.4	859.0	122.41	5.1333	0.823
	16.00	938.5	890.1	122.43	4.8750	0.881
	17.00	967.4	919.0	122.45	4.6471	0.936
	18.00	994.5	946.1	122.47	4.4444	0.989
	19.00	1020.2	971.8	122.49	4.2632	1.041
	20.00	1044.5	996.1	122.50	4.1000	1.091
	21.00	1067.7	1019.3	122.51	3.9524	1.140
	22.00	1089.6	1041.2	122.53	3.8182	1.187
	23.00	1110.5	1062.0	122.54	3.6957	1.233
	24.00	1130.2	1081.8	122.55	3.5833	1.277
	25.00	1148.9	1100.5	122.56	3.4800	1.320
	26.00	1166.6	1118.1	122.57	3.3846	1.361
	27.00	1183.2	1134.8	122.58	3.2963	1.400
	28.00	1198.8	1150.4	122.59	3.2143	1.437
	29.00	1213.5	1165.1	122.61	3.1379	1.473
	30.00	1227.3	1178.9	122.62	3.0667	1.506
	31.00	1240.2	1191.8	122.63	3.0000	1.538
	32.00	1252.3	1203.9	122.64	2.9375	1.568
	33.00	1263.5	1215.1	122.65	2.8788	1.597
	34.00	1274.1	1225.7	122.66	2.8235	1.623
	35.00	1283.9	1235.5	122.68	2.7714	1.648
	36.00	1292.9	1244.5	122.68	2.7222	1.672
	37.00	1301.5	1253.1	122.70	2.6757	1.694
	38.00	1309.4	1261.0	122.71	2.6316	1.714
	39.00	1316.7	1268.3	122.71	2.5897	1.734
	40.00	1323.5	1275.1	122.72	2.5500	1.752
	41.00	1329.9	1281.5	122.73	2.5122	1.769
	42.00	1335.8	1287.4	122.74	2.4762	1.784

ALPINE SUBSURFACE ELECTRONICS PROBE INCREMENTS LISTING

TEST: 8988 DST #2 Simpson "A" #1-4 Dolomite Res.& McCoy Pet.

DATE: 07/07/96

TIME: 13:21:48

	Time	Pressure PSig	delta P PSig	Temp. DEG F	(T+dT)/dT	P <sup>2</sup> /10 <sup>6</sup>
	43.00	1341.3	1292.9	122.74	2.4419	1.799
	44.00	1346.4	1298.0	122.76	2.4091	1.813
	45.00	1351.2	1302.8	122.77	2.3778	1.826
	46.00	1355.6	1307.2	122.78	2.3478	1.838
	47.00	1359.7	1311.3	122.78	2.3191	1.849
	48.00	1363.6	1315.1	122.80	2.2917	1.859
	49.00	1367.2	1318.8	122.79	2.2653	1.869
	50.00	1370.5	1322.1	122.81	2.2400	1.878
	51.00	1373.7	1325.2	122.82	2.2157	1.887
	52.00	1376.6	1328.2	122.82	2.1923	1.895
	53.00	1379.4	1331.0	122.83	2.1698	1.903
	54.00	1381.9	1333.5	122.85	2.1481	1.910
	55.00	1384.4	1336.0	122.85	2.1273	1.916
	56.00	1386.6	1338.2	122.87	2.1071	1.923
	57.00	1388.7	1340.3	122.87	2.0877	1.929
	58.00	1390.7	1342.3	122.88	2.0690	1.934
***** End Shut-in 2	59.00	1392.6	1344.2	122.89	2.0508	1.939
***** Final Hydro.	299.00	2405.3	0.0	123.04		

\*\*\* TOOL DIAGRAM \*\*\* CONV.

WELL NAME: Simpson A #1-4

LOCATION : 4-31S-33W,

TICKET No. 8988 D.S.T. No. 2 DATE 7/7/96

TOTAL TOOL TO BOTTOM OF TOP PACKERS ..... 27 ft.

INTERVAL TOOL .....

TOTAL TOOL TO BOTTOM OF TOP PACKERS AND ANCHOR ..... 27 ft.

TOTAL TOOL ..... 54 ft.

DRILL COLLAR ANCHOR IN INTERVAL .....

D.C. ANCHOR STND.Stands Single Total

D.P. ANCHOR STND.Stands Single Total

TOTAL ASSEMBLY .....

D.C. ABOVE TOOLS.Stands3 Single Total 272 ft.

D.P. ABOVE TOOLS.Stands48 Single Total 4534 ft.

TOTAL DRILL COLLARS DRILL PIPE & TOOLS .. 4860 ft.

TOTAL DEPTH ..... 4855 ft.

TOTAL DRILL PIPE ABOVE K.B. .... 5 ft.

REMARKS:

P.O. SUB	
C.O. SUB	4802
S.I. TOOL	4807
HMV Hyd. Tool	4812
JARS	4817
SAFETY JOINT	4819
PACKER	4823
PACKER	4828
DEPTH 4828	
STUBB Perf 3 ft.	4831
ANCHOR Pickup sub 5 ft.	4836
Alpine Rec. @	4837
Perf 5 ft.	4841
Perf 5 ft.	4846
T.C.	
DEPTH	
Perf 4 ft.	4850
AK-1 Rec. @	4852
BULLNOSE Bull Plug 5 ft	
T.D.	4855

TRILOBITE TESTING L.L.C.

OPERATOR : Dolomite Resources/McCoy DATE 7/9/96  
 WELL NAME: Simpson A #1-4 KB 2930.00 ft TICKET NO: 8989 DST #3  
 LOCATION : 4-31S-33W, Seward Cty KS GR 2917.00 ft FORMATION: Morrow  
 INTERVAL : 5266.00 To 5320.00 ft TD 5320.00 ft TEST TYPE: CONV.

RECORDER DATA

Mins		Field	1	2	3	4	TIME DATA-----
PF 30	Rec.	11038	11038	3024			PF Fr. 0450 to 0520 hr
SI 60	Range(Psi )	5075.0	5075.0	4995.0	0.0	0.0	IS Fr. 0520 to 0620 hr
SF 60	Clock(hrs)	12 hr	12 hr	Alpin			SF Fr. 0620 to 0720 hr
FS 90	Depth(ft )	5317.0	5317.0	5274.0	0.0	0.0	FS Fr. 0720 to 0850 hr

	Field	1	2	3	4	
A. Init Hydro	2735.0	2704.0	2716.0	0.0	0.0	T STARTED 0200 hr
B. First Flow	243.0	177.0	166.0	0.0	0.0	T ON BOTM 0448 hr
B1. Final Flow	283.0	284.0	298.0	0.0	0.0	T OPEN 0450 hr
C. In Shut-in	1272.0	1273.0	1280.0	0.0	0.0	T PULLED 0850 hr
D. Init Flow	350.0	353.0	332.0	0.0	0.0	T OUT 1250 hr
E. Final Flow	546.0	539.0	541.0	0.0	0.0	
F. Fl Shut-in	1209.0	1187.0	1181.0	0.0	0.0	TOOL DATA-----
G. Final Hydro	2696.0	2560.0	2510.0	0.0	0.0	Tool Wt. 2200.00 lbs
Inside/Outside	0	0	I			Wt Set On Packer 25000.00 lbs

RECOVERY

Tot Fluid 1845.00 ft of 241.00 ft in DC and 1604.00 ft in DP  
 1725.00 ft of Clean gassy oil - 60% gas, 40% oil  
 120.00 ft of Mud cut gassy oil - 45% gas, 40% oil, 15% mud

Unseated Str Wt 114000.00 lbs  
 Bot Choke 0.75 in  
 Hole Size 7.88 in  
 D Col. ID 2.25 in  
 D. Pipe ID 3.80 in  
 D.C. Length 241.00 ft  
 D.P. Length 5005.00 ft

SALINITY 0.00 P.P.M. A.P.I. Gravity 27.20

BLOW DESCRIPTION

Initial Flow -  
 Very strong blow, Bottom of bucket in  
 30 sec; Gas to surface in 7 min

Initial Shutin -  
 Bled off blow, weak blow built to 9"

Final Flow -  
 Bottom of bucket as tool opened

Final Shutin -  
 Weak blow throughout

SAMPLES: Yes  
 SENT TO: Caraway

MUD DATA-----  
 Mud Type Chemical  
 Weight 9.10 lb/cf  
 Vis. 46.00 S/L  
 W.L. 11.20 in3  
 F.C. 0.00 in  
 Mud Drop Y 20.0 ft

Amt. of fill 0.00 ft  
 Btm. H. Temp. 135.00 F  
 Hole Condition GOOD  
 % Porosity 0.00  
 Packer Size 6.75 in  
 No. of Packers 2  
 Cushion Amt. 0.00  
 Cushion Type  
 Reversed Out N  
 Tool Chased N  
 Tester TOM HORACEK  
 Co. Rep. DAVE GOLDAK  
 Contr. Sweetman Drlg.  
 Rig # 1  
 Unit #  
 Pump T.

Test Successful: Y

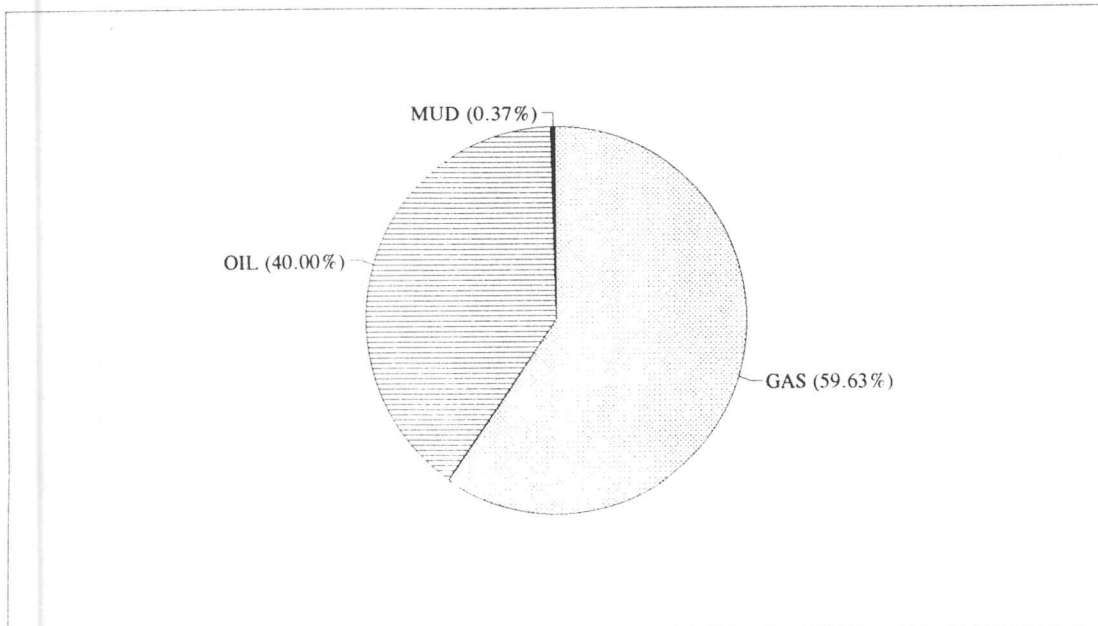
## CALCULATED RECOVERY ANALYSIS

DST 3

TICKE 8989

SAMPLE #	TOTAL		GAS		OIL		WATER		MUD	
	FEET	%	FEET	%	FEET	%	FEET	%	FEET	
DRILL	1604	60	962.4	40	641.6		0		0	
PIPE			0		0		0		0	
			0		0		0		0	
			0		0		0		0	
			0		0		0		0	
			0		0		0		0	
WEIGHT			0		0		0		0	
PIPE			0		0		0		0	
			0		0		0		0	
			0		0		0		0	
DRILL	121	60	72.6	40	48.4		0		0	
COLLAR	120	45	54	40	48		0	15	18	
			0		0		0		0	
			0		0		0		0	
			0		0		0		0	
<b>TOTAL</b>	<b>1845</b>		<b>1089</b>		<b>738</b>		<b>0</b>		<b>18</b>	

	HRS OPEN		BBL/DAY
BBL OIL =	9.59495 *	1.5 =	153.519
BBL WATER	0 *	=	0
BBL MUD =	0.08802		
BBL GAS =	14.3044		





NATURAL GAS ANALYSIS REPORT

Sampled by:  
Trilobite Testing, L.L.C.  
Hays, Kansas  
Scott City, Kansas  
Phone: 800-728-5369  
Fax: 913-625-5620

Analyzed by:  
Caraway Analytical, L.L.C.  
P. O. Box 2137  
Liberal, Kansas 67905  
Phone: 316-624-5389  
Fax: 316-626-7108

Lab Number:	960369	Analyzed:	07/09/96
Sample From:	Simpson A 1-4 DST 3	Pressure:	
Producer:	Dolomite/McCoy	Temperature:	
Date:		Location:	4-31S-33W
Time:		County:	Seward
Sampler:		State:	Kansas
Source:		Formation:	Morrow

	Mole %	GPM
Helium	He: 0.156	0.000
Oxygen	O2: 0.000	0.000
Nitrogen	N2: 3.059	0.000
Carbon Dioxide	CO2: 0.404	0.000
Methane	C1: 71.836	0.000
Ethane	C2: 12.303	3.290
Propane	C3: 7.803	2.150
Iso Butane	iC4: 0.982	0.321
Normal Butane	nC4: 1.771	0.558
Iso Pentane	iC5: 0.367	0.134
Normal Pentane	nC5: 0.449	0.163
Hexanes Plus	C6+: 0.870	0.380

TOTAL: 100.000 6.997  
Z Fact: 0.9960  
SP.GR.: 0.7871  
BTU (SAT): 1292.0 @ 14.73 psia  
BTU (DRY): 1314.8 @ 14.73 psia  
OCTANE RATING: 116.9

COMMENTS:

0.000

# TEST HISTORY

8989 DST #3 Simpson "A" #1-4 Dolomite Res. & McCoy Pet.

## Flag Points

t (Min.)	P (PSig)
A:	0.00 2716.32
B:	0.00 165.89
C:	25.00 298.19
D:	60.00 1280.21
E:	0.00 332.42
F:	59.00 541.20
G:	90.00 1181.19
Q:	0.00 2509.84

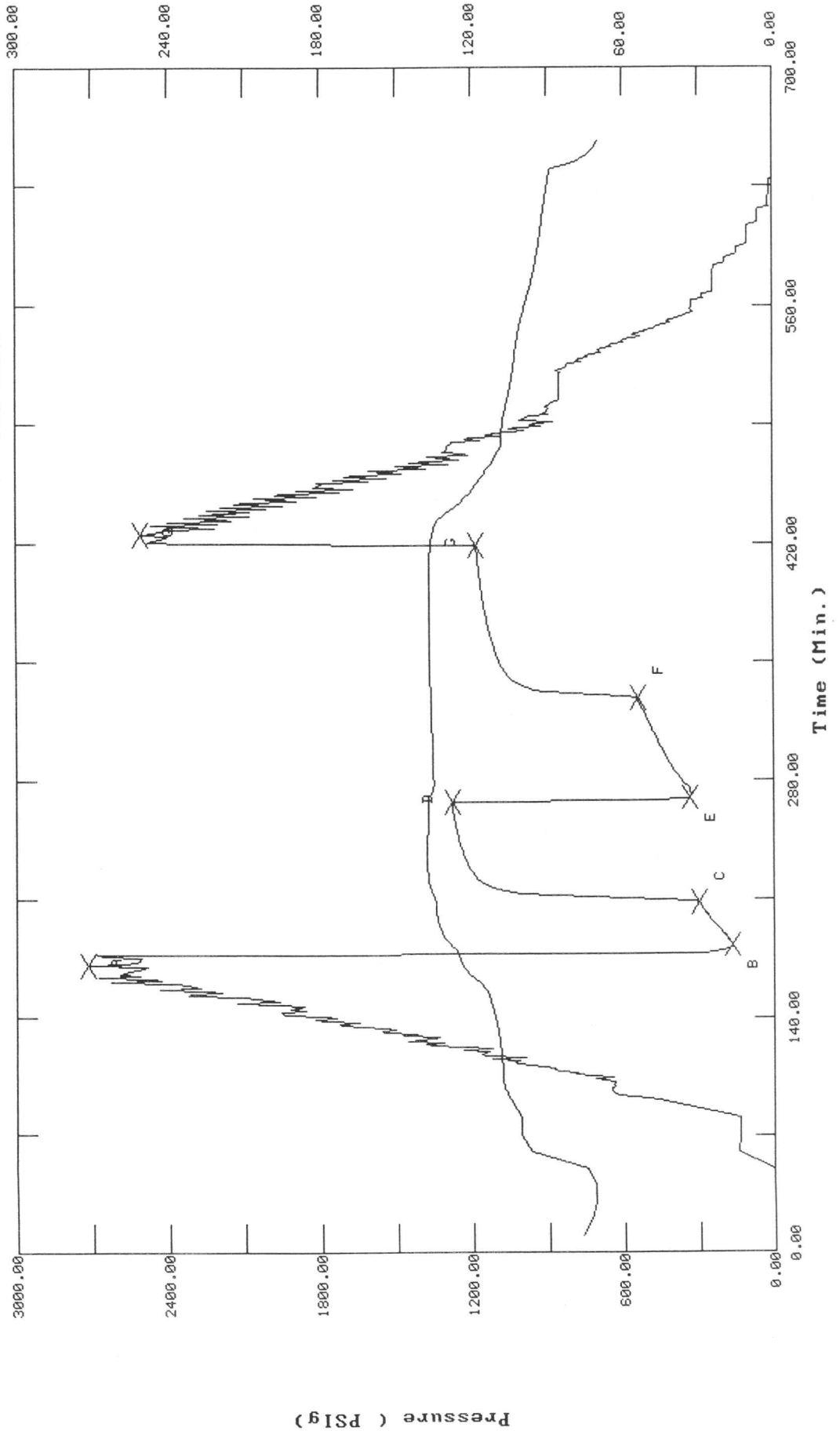
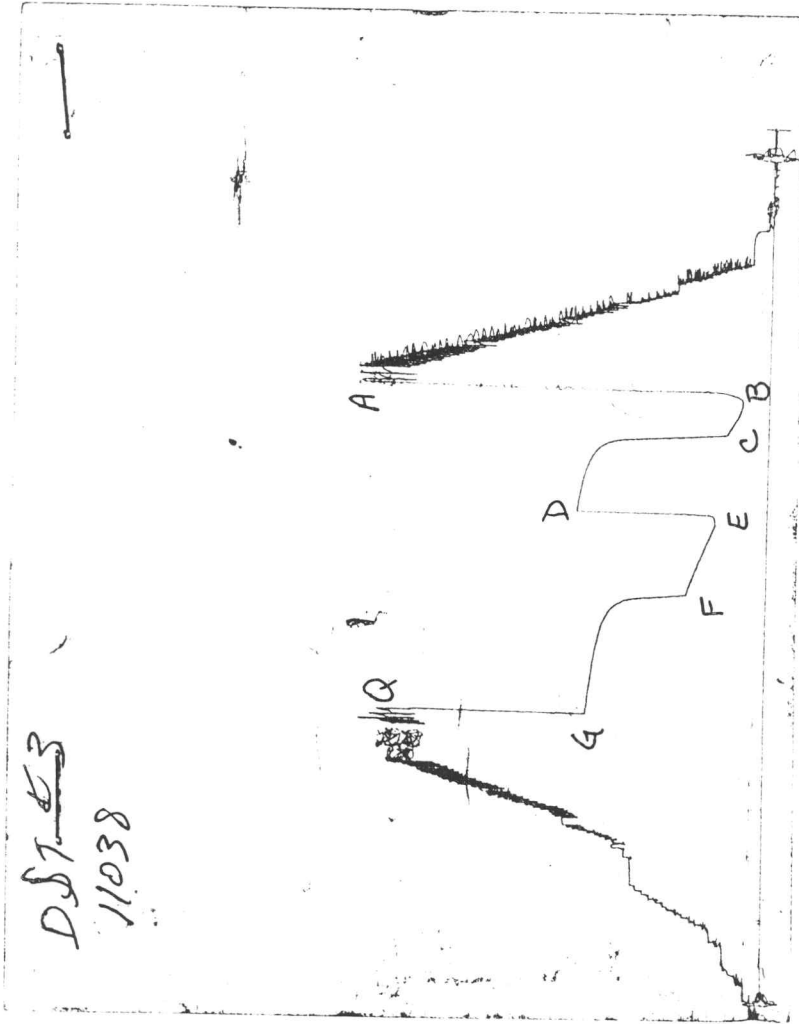


CHART PAGE



This is a photocopy of the actual AK-1 recorder chart

-----  
 ALPINE SUBSURFACE ELECTRONICS PROBE INCREMENTS LISTING  
 TEST: 8989 DST #3 Simpson "A" #1-4 Dolomite Res. & McCoy Pet.  
 DATE: 07/09/96 TIME: 01:50:54  
 -----

	Time	Pressure PSig	delta P PSig	Temp. DEG F	(T+dT)/dT	P^2/10^6
***** Initial Hydro.	171.00	2716.3	0.0	123.67		
***** Start Flow 1	0.00	165.9	0.0	128.19		
	1.00	171.7	5.8	128.88		
	2.00	177.8	11.9	129.51		
	3.00	182.7	16.8	130.08		
	4.00	186.3	20.4	130.61		
	5.00	191.3	25.4	131.07		
	6.00	196.6	30.7	131.50		
	7.00	202.2	36.3	131.88		
	8.00	208.1	42.2	132.22		
	9.00	213.5	47.6	132.53		
	10.00	219.3	53.4	132.81		
	11.00	225.0	59.1	133.03		
	12.00	230.7	64.8	133.24		
	13.00	236.6	70.7	133.43		
	14.00	242.4	76.5	133.60		
	15.00	248.1	82.2	133.75		
	16.00	253.8	87.9	133.87		
	17.00	259.0	93.1	134.00		
	18.00	264.2	98.3	134.09		
	19.00	269.4	103.5	134.18		
	20.00	274.3	108.4	134.27		
	21.00	279.4	113.6	134.34		
	22.00	284.1	118.2	134.41		
	23.00	289.0	123.1	134.46		
	24.00	293.7	127.8	134.52		
***** End Flow 1	25.00	298.2	132.3	134.58		
***** Start Shutin 1	0.00	298.2	0.0	134.58	0.0000	0.089
	1.00	320.8	22.7	134.62	26.0000	0.103
	2.00	447.9	149.7	134.67	13.5000	0.201
	3.00	583.5	285.3	134.80	9.3333	0.340
	4.00	725.6	427.4	135.02	7.2500	0.526
	5.00	876.7	578.5	135.35	6.0000	0.769
	6.00	1004.2	706.1	135.72	5.1667	1.009
	7.00	1064.1	765.9	136.08	4.5714	1.132
	8.00	1096.5	798.3	136.39	4.1250	1.202
	9.00	1118.2	820.1	136.64	3.7778	1.250
	10.00	1134.4	836.2	136.84	3.5000	1.287
	11.00	1147.0	848.8	137.01	3.2727	1.316
	12.00	1157.2	859.0	137.16	3.0833	1.339
	13.00	1165.6	867.4	137.28	2.9231	1.359
	14.00	1173.1	874.9	137.40	2.7857	1.376
	15.00	1179.7	881.5	137.46	2.6667	1.392
	16.00	1185.6	887.4	137.54	2.5625	1.406
	17.00	1190.9	892.8	137.60	2.4706	1.418
	18.00	1195.9	897.7	137.64	2.3889	1.430
	19.00	1200.4	902.2	137.67	2.3158	1.441
	20.00	1204.7	906.5	137.69	2.2500	1.451
	21.00	1208.6	910.4	137.71	2.1905	1.461
	22.00	1212.3	914.1	137.70	2.1364	1.470
	23.00	1215.8	917.6	137.72	2.0870	1.478

ALPINE SUBSURFACE ELECTRONICS PROBE INCREMENTS LISTING

TEST: 8989 DST #3 Simpson "A" #1-4 Dolomite Res. & McCoy Pet.

DATE: 07/09/96

TIME: 01:50:54

	Time	Pressure PSig	delta P PSig	Temp. DEG F	(T+dT)/dT	P <sup>2</sup> /10 <sup>6</sup>	
	24.00	1219.1	920.9	137.72	2.0417	1.486	
	25.00	1222.2	924.0	137.73	2.0000	1.494	
	26.00	1225.2	927.0	137.72	1.9615	1.501	
	27.00	1228.0	929.8	137.72	1.9259	1.508	
	28.00	1230.7	932.5	137.72	1.8929	1.515	
	29.00	1233.3	935.2	137.71	1.8621	1.521	
	30.00	1235.8	937.6	137.71	1.8333	1.527	
	31.00	1238.2	940.0	137.71	1.8065	1.533	
	32.00	1240.4	942.2	137.70	1.7812	1.539	
	33.00	1242.7	944.5	137.70	1.7576	1.544	
	34.00	1244.7	946.5	137.69	1.7353	1.549	
	35.00	1246.8	948.6	137.67	1.7143	1.554	
	36.00	1248.7	950.5	137.67	1.6944	1.559	
	37.00	1250.6	952.4	137.66	1.6757	1.564	
	38.00	1252.4	954.2	137.66	1.6579	1.568	
	39.00	1254.1	956.0	137.65	1.6410	1.573	
	40.00	1255.8	957.6	137.65	1.6250	1.577	
	41.00	1257.5	959.3	137.63	1.6098	1.581	
	42.00	1259.0	960.8	137.64	1.5952	1.585	
	43.00	1260.6	962.4	137.63	1.5814	1.589	
	44.00	1262.0	963.9	137.63	1.5682	1.593	
	45.00	1263.4	965.3	137.62	1.5556	1.596	
	46.00	1264.8	966.6	137.61	1.5435	1.600	
	47.00	1266.2	968.0	137.60	1.5319	1.603	
	48.00	1267.4	969.2	137.59	1.5208	1.606	
	49.00	1268.7	970.5	137.57	1.5102	1.610	
	50.00	1269.9	971.7	137.57	1.5000	1.613	
	51.00	1271.1	972.9	137.55	1.4902	1.616	
	52.00	1272.2	974.0	137.53	1.4808	1.619	
	53.00	1273.4	975.2	137.50	1.4717	1.621	
	54.00	1274.5	976.3	137.49	1.4630	1.624	
	55.00	1275.4	977.2	137.48	1.4545	1.627	
	56.00	1276.4	978.2	137.45	1.4464	1.629	
	57.00	1277.4	979.2	137.43	1.4386	1.632	
	58.00	1278.4	980.2	137.41	1.4310	1.634	
	59.00	1279.3	981.1	137.39	1.4237	1.637	
*****	End Shut-in 1	60.00	1280.2	982.0	137.38	1.4167	1.639
*****	Start Flow 2	0.00	332.4	0.0	137.25		
		1.00	329.2	-3.2	136.87		
		2.00	329.8	-2.6	136.39		
		3.00	331.7	-0.7	135.98		
		4.00	333.8	1.4	135.67		
		5.00	332.9	0.4	135.46		
		6.00	334.9	2.5	135.32		
		7.00	343.0	10.6	135.24		
		8.00	354.1	21.7	135.20		
		9.00	362.0	29.6	135.19		
		10.00	364.7	32.3	135.22		
		11.00	369.5	37.1	135.24		
		12.00	373.9	41.5	135.27		
		13.00	378.7	46.3	135.31		

ALPINE SUBSURFACE ELECTRONICS PROBE INCREMENTS LISTING  
 TEST: 8989 DST #3 Simpson "A" #1-4 Dolomite Res. & McCoy Pet.  
 DATE: 07/09/96 TIME: 01:50:54

	Time	Pressure PSIg	delta P PSIg	Temp. DEG F	(T+dT)/dT	P^2/10^6
	14.00	383.9	51.4	135.34		
	15.00	388.8	56.4	135.37		
	16.00	393.7	61.2	135.41		
	17.00	399.1	66.7	135.44		
	18.00	403.7	71.3	135.47		
	19.00	408.4	75.9	135.51		
	20.00	412.6	80.2	135.53		
	21.00	416.4	84.0	135.56		
	22.00	420.2	87.8	135.59		
	23.00	423.6	91.2	135.62		
	24.00	427.0	94.5	135.63		
	25.00	430.5	98.1	135.65		
	26.00	433.8	101.4	135.67		
	27.00	437.4	105.0	135.70		
	28.00	440.8	108.3	135.71		
	29.00	444.2	111.8	135.72		
	30.00	448.0	115.6	135.73		
	31.00	451.4	119.0	135.76		
	32.00	455.0	122.6	135.77		
	33.00	458.3	125.9	135.79		
	34.00	461.8	129.3	135.81		
	35.00	464.9	132.5	135.80		
	36.00	468.3	135.9	135.82		
	37.00	471.9	139.4	135.84		
	38.00	475.1	142.6	135.84		
	39.00	478.6	146.2	135.84		
	40.00	482.1	149.7	135.86		
	41.00	485.4	152.9	135.86		
	42.00	488.8	156.4	135.87		
	43.00	492.0	159.5	135.87		
	44.00	495.5	163.1	135.89		
	45.00	498.5	166.1	135.91		
	46.00	501.6	169.2	135.92		
	47.00	504.9	172.5	135.92		
	48.00	507.6	175.2	135.93		
	49.00	510.7	178.3	135.94		
	50.00	513.8	181.4	135.95		
	51.00	517.0	184.6	135.95		
	52.00	520.2	187.8	135.97		
	53.00	523.5	191.1	135.98		
	54.00	526.6	194.1	135.98		
	55.00	529.6	197.2	135.98		
	56.00	532.7	200.3	136.00		
	57.00	535.5	203.1	136.00		
	58.00	538.1	205.7	136.02		
***** End Flow 2	59.00	541.2	208.8	136.02		
***** Start Shutin 2	0.00	541.2	0.0	136.02	0.0000	0.293
	1.00	598.5	57.3	136.02	85.0000	0.358
	2.00	707.6	166.4	136.03	43.0000	0.501
	3.00	809.1	267.9	136.10	29.0000	0.655
	4.00	906.7	365.5	136.20	22.0000	0.822

ALPINE SUBSURFACE ELECTRONICS PROBE INCREMENTS LISTING

TEST: 8989 DST #3 Simpson "A" #1-4 Dolomite Res. & McCoy Pet.

DATE: 07/09/96 TIME: 01:50:54

Time	Pressure PSig	delta P PSig	Temp. DEG F	(T+dT)/dT	P <sup>2</sup> /10 <sup>6</sup>
5.00	955.9	414.7	136.31	17.8000	0.914
6.00	982.7	441.5	136.42	15.0000	0.966
7.00	1001.2	460.0	136.52	13.0000	1.002
8.00	1015.3	474.1	136.61	11.5000	1.031
9.00	1026.6	485.4	136.70	10.3333	1.054
10.00	1035.9	494.7	136.76	9.4000	1.073
11.00	1043.8	502.6	136.82	8.6364	1.089
12.00	1050.6	509.4	136.87	8.0000	1.104
13.00	1056.6	515.4	136.91	7.4615	1.116
14.00	1061.9	520.7	136.94	7.0000	1.128
15.00	1066.8	525.6	136.98	6.6000	1.138
16.00	1071.2	530.0	136.99	6.2500	1.148
17.00	1075.3	534.1	136.99	5.9412	1.156
18.00	1079.1	537.9	137.01	5.6667	1.164
19.00	1082.7	541.5	137.02	5.4211	1.172
20.00	1086.0	544.8	137.03	5.2000	1.179
21.00	1089.2	548.0	137.02	5.0000	1.186
22.00	1092.1	550.9	137.02	4.8182	1.193
23.00	1094.9	553.7	137.03	4.6522	1.199
24.00	1097.7	556.5	137.03	4.5000	1.205
25.00	1100.3	559.1	137.01	4.3600	1.211
26.00	1102.8	561.6	137.02	4.2308	1.216
27.00	1105.2	564.0	137.01	4.1111	1.221
28.00	1107.4	566.2	137.01	4.0000	1.226
29.00	1109.7	568.5	137.01	3.8966	1.231
30.00	1111.9	570.7	137.01	3.8000	1.236
31.00	1114.0	572.8	137.01	3.7097	1.241
32.00	1116.0	574.8	137.00	3.6250	1.245
33.00	1118.0	576.8	137.00	3.5455	1.250
34.00	1119.9	578.7	137.00	3.4706	1.254
35.00	1121.8	580.6	136.99	3.4000	1.258
36.00	1123.6	582.4	136.98	3.3333	1.262
37.00	1125.3	584.1	136.97	3.2703	1.266
38.00	1127.1	585.9	136.97	3.2105	1.270
39.00	1128.7	587.5	136.97	3.1538	1.274
40.00	1130.3	589.1	136.96	3.1000	1.278
41.00	1131.9	590.7	136.96	3.0488	1.281
42.00	1133.5	592.3	136.95	3.0000	1.285
43.00	1135.0	593.8	136.95	2.9535	1.288
44.00	1136.5	595.3	136.95	2.9091	1.292
45.00	1137.9	596.7	136.94	2.8667	1.295
46.00	1139.3	598.1	136.94	2.8261	1.298
47.00	1140.7	599.5	136.95	2.7872	1.301
48.00	1142.1	600.9	136.93	2.7500	1.304
49.00	1143.4	602.2	136.93	2.7143	1.307
50.00	1144.7	603.5	136.93	2.6800	1.310
51.00	1145.9	604.7	136.93	2.6471	1.313
52.00	1147.2	606.0	136.92	2.6154	1.316
53.00	1148.4	607.2	136.89	2.5849	1.319
54.00	1149.6	608.4	136.90	2.5556	1.322
55.00	1150.8	609.6	136.89	2.5273	1.324

-----  
 ALPINE SUBSURFACE ELECTRONICS PROBE INCREMENTS LISTING

TEST: 8989 DST #3 Simpson "A" #1-4 Dolomite Res. & McCoy Pet.

DATE: 07/09/96

TIME: 01:50:54  
 -----

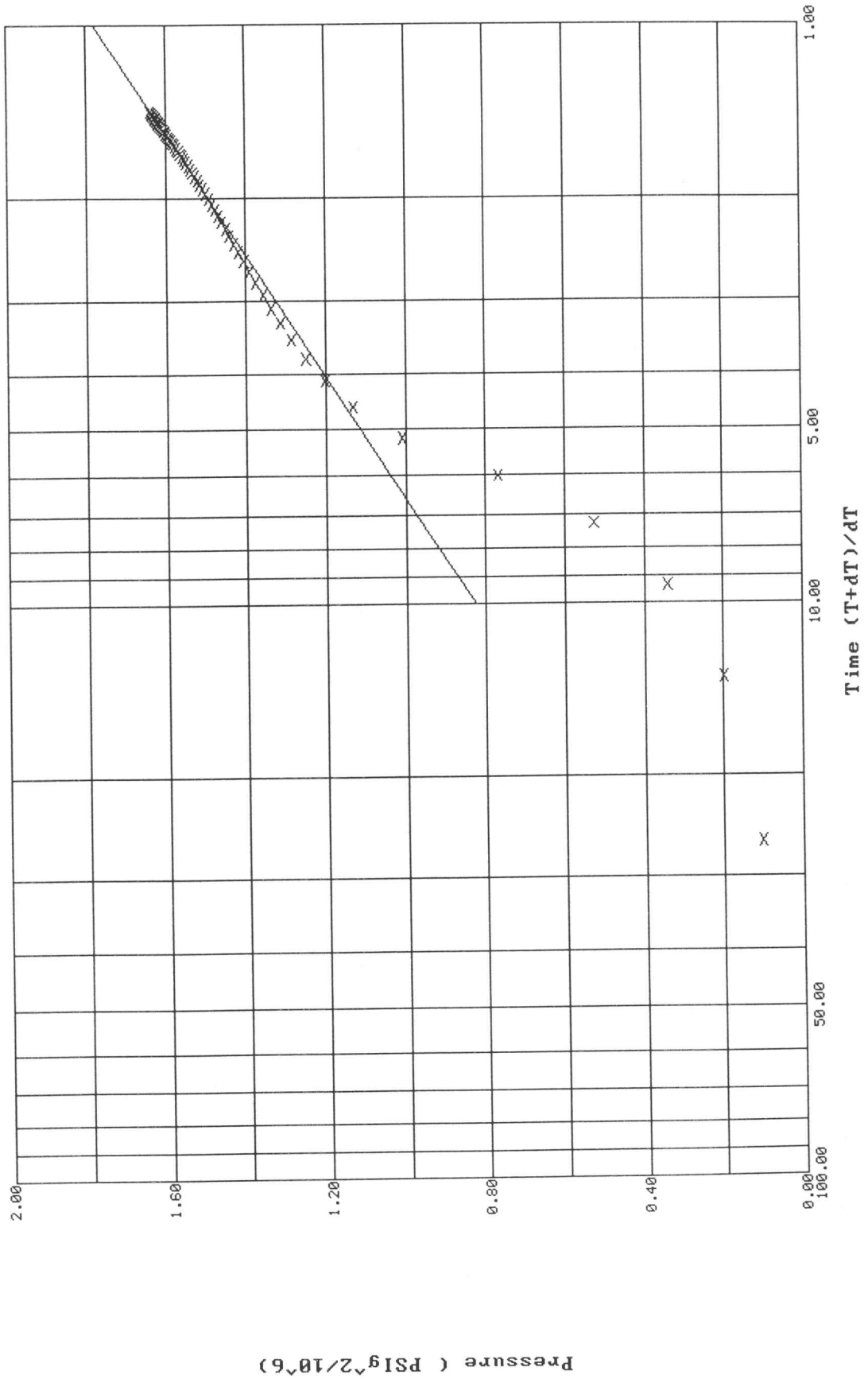
Time	Pressure PSig	delta P PSig	Temp. DEG F	(T+dT)/dT	P^2/10^6
56.00	1151.9	610.7	136.89	2.5000	1.327
57.00	1153.1	611.9	136.87	2.4737	1.330
58.00	1154.2	613.0	136.86	2.4483	1.332
59.00	1155.3	614.1	136.84	2.4237	1.335
60.00	1156.4	615.2	136.84	2.4000	1.337
61.00	1157.4	616.2	136.82	2.3770	1.340
62.00	1158.4	617.2	136.80	2.3548	1.342
63.00	1159.4	618.2	136.80	2.3333	1.344
64.00	1160.5	619.3	136.78	2.3125	1.347
65.00	1161.4	620.2	136.76	2.2923	1.349
66.00	1162.4	621.2	136.74	2.2727	1.351
67.00	1163.3	622.1	136.72	2.2537	1.353
68.00	1164.2	623.0	136.71	2.2353	1.355
69.00	1165.1	623.9	136.70	2.2174	1.358
70.00	1166.0	624.8	136.68	2.2000	1.360
71.00	1166.9	625.7	136.66	2.1831	1.362
72.00	1167.8	626.6	136.64	2.1667	1.364
73.00	1168.7	627.5	136.63	2.1507	1.366
74.00	1169.5	628.3	136.61	2.1351	1.368
75.00	1170.3	629.1	136.60	2.1200	1.370
76.00	1171.1	629.9	136.58	2.1053	1.372
77.00	1171.9	630.7	136.58	2.0909	1.373
78.00	1172.7	631.5	136.55	2.0769	1.375
79.00	1173.5	632.3	136.55	2.0633	1.377
80.00	1174.2	633.0	136.53	2.0500	1.379
81.00	1175.0	633.8	136.52	2.0370	1.381
82.00	1175.7	634.5	136.51	2.0244	1.382
83.00	1176.4	635.2	136.49	2.0120	1.384
84.00	1177.1	635.9	136.46	2.0000	1.386
85.00	1177.8	636.6	136.46	1.9882	1.387
86.00	1178.5	637.3	136.44	1.9767	1.389
87.00	1179.2	638.0	136.42	1.9655	1.391
88.00	1179.9	638.7	136.40	1.9545	1.392
89.00	1180.5	639.3	136.38	1.9438	1.394
***** End Shut-in 2	90.00	1181.2	640.0	136.37	1.395
***** Final Hydro.	425.00	2509.8	0.0	135.43	

# P<sup>2</sup> Horner Plot: shut-in #1

8989 DST #3 Simpson "A" #1-4 Dolomite Res. & McCoy Pet.

Slope: 0.9541 PSig<sup>2</sup>/10<sup>6</sup>/cycle

Ext. Pressure: 1334.2281 PSig

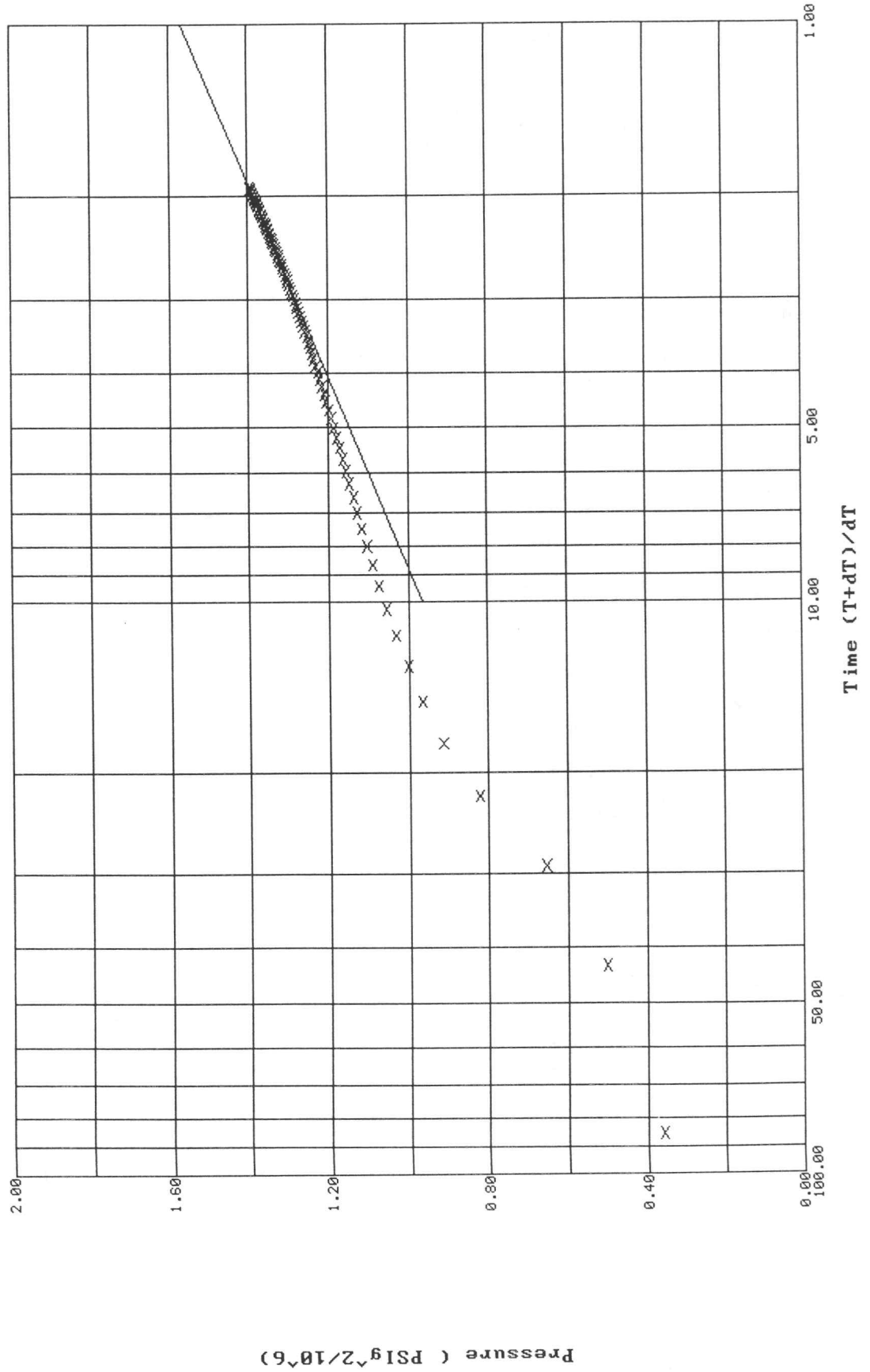


# P<sup>2</sup> Horner Plot: shut-in #2

8989 DST #3 Simpson "A" #1-4 Dolomite Res. & McCoy Pet.

Slope: 0.6043  $\text{PSIg}^2/10^6/\text{cycle}$

Ext. Pressure: 1251.8812  $\text{PSIg}$



\*\*\* TOOL DIAGRAM \*\*\* CONV.

WELL NAME: Simpson A #1-4

LOCATION : 4-31S-33W, Seward Cty KS

TICKET No. 8989 D.S.T. No. 3 DATE 7/9/96

TOTAL TOOL TO BOTTOM OF TOP PACKERS ..... 27

INTERVAL TOOL .....

BOTTOM PACKERS AND ANCHOR ..... 23

TOTAL TOOL ..... 50

DRILL COLLAR ANCHOR IN INTERVAL .....

C. ANCHOR STND.Stands Single 1 Total 31

P. ANCHOR STND.Stands Single Total

TOTAL ASSEMBLY ..... 81

C. ABOVE TOOLS.Stands2 Single 2 Total 241

P. ABOVE TOOLS.Stands53 Single Total 5005

TOTAL DRILL COLLARS DRILL PIPE & TOOLS .. 5327

TOTAL DEPTH ..... 5320

TOTAL DRILL PIPE ABOVE K.B. .... 7

REMARKS:

P.O. SUB	
C.O. SUB	5239
S.I. TOOL	5245
HMV Hyd. Tool	5250
JARS	5255
SAFETY JOINT	5257
PACKER	5261
PACKER	5266
DEPTH 5266	
STUBB Perf 2 ft.	5268
ANCHOR Pick up sub 5 ft.	5273
Alpine Rec. @	5274
Perf 5 ft.	5278
Perf 4 ft.	5282
C.O. sub 1 ft	5283
Drill collars	5314
T.C.	
DEPTH	
C.O. sub 1 ft	5315
AK-1 recorder	5317
BULLNOSE Bull Plug 5 ft	
T.D.	5320

TRILOBITE TESTING L.L.C.

OPERATOR : Dolomite Resources/McCoy  
 WELL NAME: Simpson A #1-4  
 LOCATION : 4-31S-33W, Seward Cty KS  
 INTERVAL : 5340.00 To 5400.00 ft

DATE 7/10/96  
 KB 2930.00 ft TICKET NO: 8990 DST #4  
 GR 2917.00 ft FORMATION: Morrow Sand  
 TD 5400.00 ft TEST TYPE: CONV.

RECORDER DATA

Mins	Field	1	2	3	4	TIME DATA-----
PF 30 Rec.	11038	11038	3024			PF Fr. 0445 to 0515 hr
SI 60 Range(Psi )	5075.0	5075.0	4995.0	0.0	0.0	IS Fr. 0515 to 0615 hr
SF 60 Clock(hrs)	12	12	Alpin			SF Fr. 0615 to 0715 hr
FS 90 Depth(ft )	5397.0	5397.0	5349.0	0.0	0.0	FS Fr. 0715 to 0845 hr

	Field	1	2	3	4	
A. Init Hydro	2902.0	2828.0	2695.0	0.0	0.0	T STARTED 0230 hr
B. First Flow	27.0	25.0	28.0	0.0	0.0	T ON BOTM 0443 hr
B1. Final Flow	27.0	25.0	29.0	0.0	0.0	T OPEN 0445 hr
C. In Shut-in	55.0	74.0	100.0	0.0	0.0	T PULLED 0845 hr
D. Init Flow	27.0	17.0	34.0	0.0	0.0	T OUT 1115 hr
E. Final Flow	27.0	25.0	39.0	0.0	0.0	
F. Fl Shut-in	82.0	88.0	124.0	0.0	0.0	
G. Final Hydro	2735.0	2733.0	2541.0	0.0	0.0	
Inside/Outside	0	0	I			

TOOL DATA-----  
 Tool Wt. 2000.00 lbs  
 Wt Set On Packer 25000.00 lbs  
 Wt Pulled Loose 130000.00 lbs  
 Initial Str Wt 110000.00 lbs  
 Unseated Str Wt 110000.00 lbs  
 Bot Choke 0.75 in  
 Hole Size 7.88 in  
 D Col. ID 2.25 in  
 D. Pipe ID 3.80 in  
 D.C. Length 241.00 ft  
 D.P. Length 5099.00 ft

RECOVERY

Tot Fluid 60.00 ft of 60.00 ft in DC and 0.00 ft in DP  
 570.00 ft of Gas in pipe  
 60.00 ft of Drilling mud

SALINITY 0.00 P.P.M. A.P.I. Gravity 0.00

BLOW DESCRIPTION

Initial Flow -  
 Fair blow, built to 8"  
  
 Initial Shutin -  
 Bled off blow, no blow back  
  
 Final Flow -  
 Weak blow throughout  
  
 Final Shutin -  
 No blow

MUD DATA-----  
 Mud Type Chemical  
 Weight 9.10 lb/cf  
 Vis. 58.00 S/L  
 W.L. 8.00 in3  
 F.C. 0.00 in  
 Mud Drop Y 20.0 ft  
  
 Amt. of fill 0.00 ft  
 Btm. H. Temp. 130.00 F  
 Hole Condition Good  
 % Porosity 0.00  
 Packer Size 6.75 in  
 No. of Packers 2  
 Cushion Amt. 0.00  
 Cushion Type  
 Reversed Out N  
 Tool Chased N  
 Tester TOM HORACEK  
 Co. Rep. DAVE GOLDAK  
 Contr. Sweetman Drlg.  
 Rig # 1  
 Unit #  
 Pump T.

SAMPLES: No  
 SENT TO:

Test Successful: Y

# TEST HISTORY

8990 DST #4 Simpson 'A' #1-4 Dolomite Res. & McCoy Pet.

## Flag Points

	t (Min.)	Pk (PSig)
A:	0.00	2694.55
B:	0.00	28.10
C:	30.00	29.06
D:	60.00	100.46
E:	0.00	33.75
F:	61.00	38.74
G:	88.00	124.37
Q:	0.00	2541.34

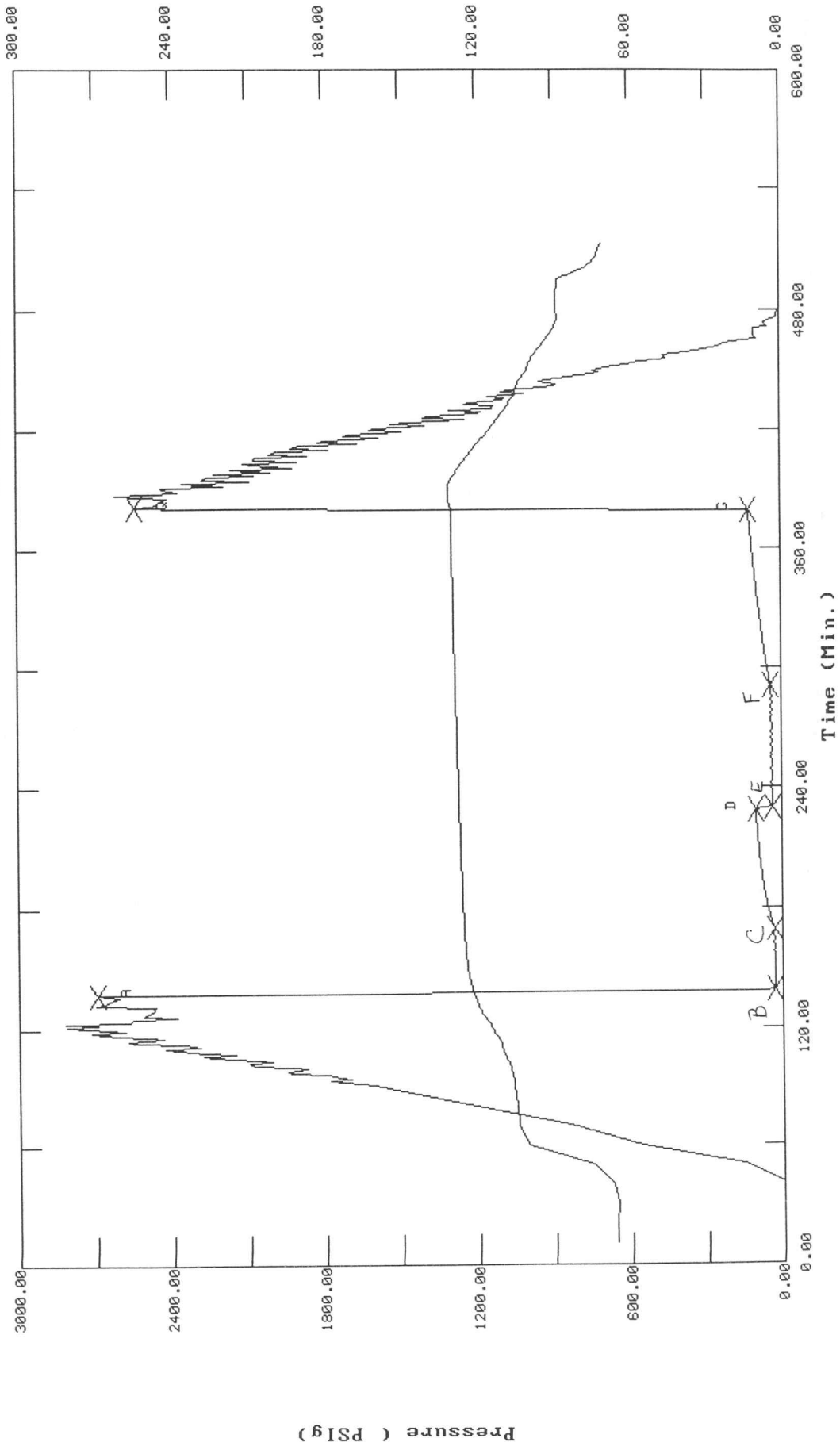
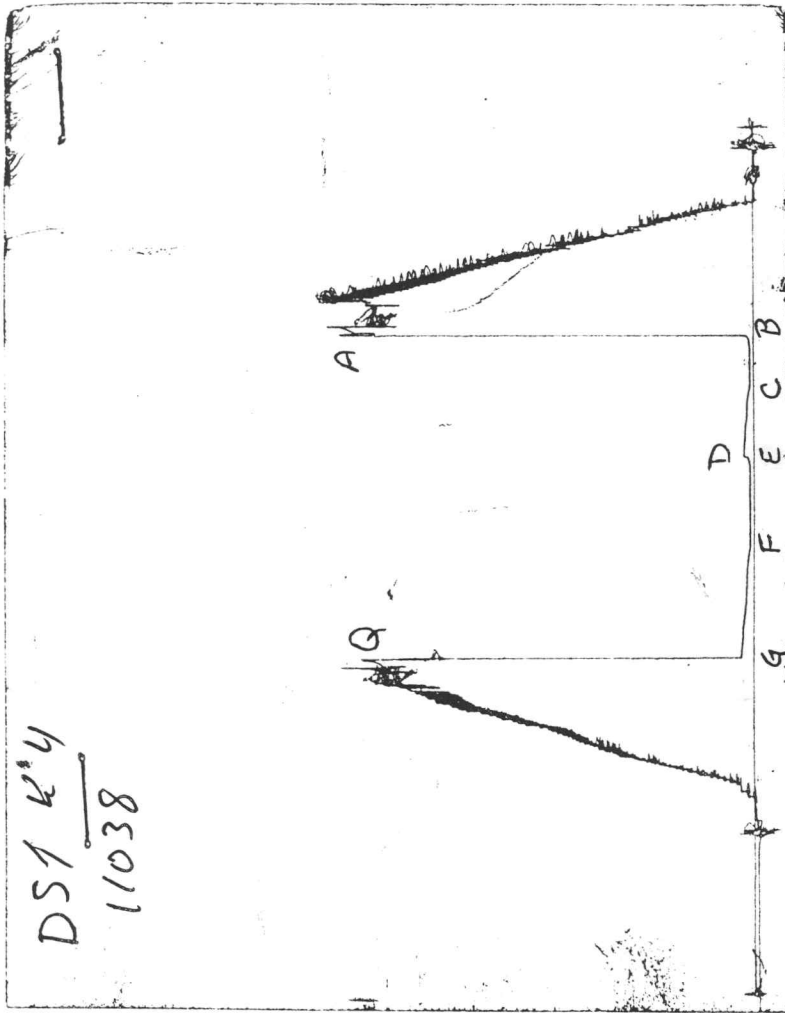


CHART PAGE



This is a photocopy of the actual AK-1 recorder chart

ALPINE SUBSURFACE ELECTRONICS PROBE INCREMENTS LISTING

TEST: 8990 DST #4 Simpson "A" #1-4 Dolomite Res. & McCoy Pet.

DATE: 07/10/96 TIME: 02:26:50

	Time	Pressure PSIg	delta P PSIg	P	Temp. DEG F	(T+dT)/dT	P^2/10^6
*****	Initial Hydro.	137.00	2694.5	0.0	121.70		
*****	Start Flow 1	0.00	28.1	0.0	122.17		
		1.00	27.6	-0.5	122.35		
		2.00	26.7	-1.4	122.53		
		3.00	29.4	1.3	122.72		
		4.00	27.8	-0.3	122.91		
		5.00	26.4	-1.7	123.11		
		6.00	26.3	-1.8	123.29		
		7.00	28.6	0.5	123.45		
		8.00	27.8	-0.3	123.61		
		9.00	28.2	0.1	123.75		
		10.00	27.9	-0.2	123.87		
		11.00	28.8	0.7	124.00		
		12.00	29.2	1.1	124.11		
		13.00	29.2	1.1	124.22		
		14.00	29.3	1.2	124.31		
		15.00	28.7	0.6	124.40		
		16.00	29.6	1.5	124.49		
		17.00	28.9	0.8	124.56		
		18.00	29.3	1.2	124.63		
		19.00	31.8	3.7	124.71		
		20.00	29.8	1.7	124.77		
		21.00	28.6	0.5	124.83		
		22.00	30.6	2.5	124.89		
		23.00	30.9	2.8	124.94		
		24.00	30.0	1.9	124.98		
		25.00	30.2	2.1	125.04		
		26.00	30.4	2.3	125.09		
		27.00	31.3	3.2	125.14		
		28.00	32.5	4.4	125.18		
		29.00	30.4	2.3	125.23		
*****	End Flow 1	30.00	29.1	1	125.28		
*****	Start Shutin 1	0.00	29.1	0.0	125.28	0.0000	0.001
		1.00	31.9	2.9	125.31	31.0000	0.001
		2.00	34.3	5.2	125.35	16.0000	0.001
		3.00	36.7	7.6	125.40	11.0000	0.001
		4.00	39.0	9.9	125.43	8.5000	0.002
		5.00	41.3	12.3	125.47	7.0000	0.002
		6.00	43.4	14.4	125.51	6.0000	0.002
		7.00	45.2	16.1	125.54	5.2857	0.002
		8.00	47.6	18.5	125.57	4.7500	0.002
		9.00	49.4	20.3	125.62	4.3333	0.002
		10.00	51.2	22.1	125.66	4.0000	0.003
		11.00	52.9	23.8	125.68	3.7273	0.003
		12.00	54.9	25.9	125.72	3.5000	0.003
		13.00	56.6	27.5	125.75	3.3077	0.003
		14.00	58.2	29.2	125.79	3.1429	0.003
		15.00	59.8	30.8	125.81	3.0000	0.004
		16.00	61.7	32.6	125.84	2.8750	0.004
		17.00	63.5	34.4	125.88	2.7647	0.004
		18.00	64.6	35.5	125.90	2.6667	0.004

-----  
 ALPINE SUBSURFACE ELECTRONICS PROBE INCREMENTS LISTING  
 TEST: 8990 DST #4 Simpson "A" #1-4 Dolomite Res. & McCoy Pet.  
 DATE: 07/10/96 TIME: 02:26:50  
 -----

	Time	Pressure PSig	delta P PSig	Temp. DEG F	(T+dT)/dT	P^2/10^6
	19.00	65.9	36.9	125.94	2.5789	0.004
	20.00	67.4	38.3	125.96	2.5000	0.005
	21.00	68.6	39.5	125.98	2.4286	0.005
	22.00	70.1	41.0	126.03	2.3636	0.005
	23.00	71.6	42.5	126.05	2.3043	0.005
	24.00	72.8	43.8	126.08	2.2500	0.005
	25.00	73.7	44.6	126.10	2.2000	0.005
	26.00	75.3	46.2	126.13	2.1538	0.006
	27.00	76.2	47.1	126.16	2.1111	0.006
	28.00	77.3	48.3	126.19	2.0714	0.006
	29.00	78.3	49.2	126.21	2.0345	0.006
	30.00	79.5	50.4	126.24	2.0000	0.006
	31.00	80.5	51.4	126.27	1.9677	0.006
	32.00	81.7	52.6	126.28	1.9375	0.007
	33.00	82.3	53.3	126.31	1.9091	0.007
	34.00	83.3	54.3	126.34	1.8824	0.007
	35.00	84.3	55.2	126.37	1.8571	0.007
	36.00	84.9	55.8	126.39	1.8333	0.007
	37.00	85.7	56.6	126.42	1.8108	0.007
	38.00	86.8	57.7	126.44	1.7895	0.008
	39.00	87.5	58.4	126.46	1.7692	0.008
	40.00	88.1	59.1	126.49	1.7500	0.008
	41.00	89.2	60.1	126.51	1.7317	0.008
	42.00	89.9	60.9	126.54	1.7143	0.008
	43.00	90.3	61.2	126.56	1.6977	0.008
	44.00	91.0	62.0	126.58	1.6818	0.008
	45.00	91.9	62.8	126.61	1.6667	0.008
	46.00	92.5	63.5	126.62	1.6522	0.009
	47.00	93.0	64.0	126.65	1.6383	0.009
	48.00	93.9	64.8	126.68	1.6250	0.009
	49.00	94.4	65.4	126.71	1.6122	0.009
	50.00	95.0	65.9	126.73	1.6000	0.009
	51.00	95.7	66.7	126.74	1.5882	0.009
	52.00	96.5	67.4	126.77	1.5769	0.009
	53.00	97.0	67.9	126.80	1.5660	0.009
	54.00	97.5	68.5	126.83	1.5556	0.01
	55.00	98.1	69.0	126.85	1.5455	0.01
	56.00	98.5	69.5	126.87	1.5357	0.01
	57.00	99.2	70.1	126.89	1.5263	0.01
	58.00	99.6	70.5	126.92	1.5172	0.01
	59.00	100	70.9	126.94	1.5085	0.01
***** End Shut-in 1	60.00	100.5	71.4	126.96	1.5000	0.010
***** Start Flow 2	0.00	33.7	0.0	126.98		
	1.00	34.7	0.9	126.99		
	2.00	31.8	-2.0	127.02		
	3.00	35.4	1.7	127.03		
	4.00	34.2	0.5	127.06		
	5.00	34.6	0.9	127.08		
	6.00	33.6	-0.2	127.10		
	7.00	32.2	-1.5	127.12		
	8.00	35.1	1.4	127.15		

ALPINE SUBSURFACE ELECTRONICS PROBE INCREMENTS LISTING

TEST: 8990 DST #4 Simpson "A" #1-4 Dolomite Res. & McCoy Pet.

DATE: 07/10/96 TIME: 02:26:50

Time	Pressure PSIg	delta P PSIg	Temp. DEG F	(T+dT)/dT	P <sup>2</sup> /10 <sup>6</sup>
9.00	34.6	0.8	127.18		
10.00	37.1	3.3	127.20		
11.00	35.3	1.5	127.23		
12.00	37.1	3.3	127.25		
13.00	34.3	0.5	127.29		
14.00	33.7	-0.1	127.30		
15.00	33.6	-0.1	127.33		
16.00	33.5	-0.2	127.35		
17.00	36.0	2.2	127.37		
18.00	34.7	0.9	127.41		
19.00	37.0	3.2	127.43		
20.00	34.7	0.9	127.46		
21.00	33.4	-0.4	127.48		
22.00	34.9	1.2	127.51		
23.00	36.0	2.3	127.52		
24.00	35.0	1.3	127.54		
25.00	37.4	3.6	127.57		
26.00	34.4	0.7	127.60		
27.00	36.8	3.1	127.63		
28.00	35.6	1.8	127.64		
29.00	34.2	0.4	127.66		
30.00	36.3	2.6	127.69		
31.00	38.7	4.9	127.71		
32.00	36.2	2.4	127.73		
33.00	35.1	1.4	127.75		
34.00	35.2	1.4	127.78		
35.00	37.1	3.3	127.80		
36.00	35.1	1.4	127.83		
37.00	35.5	1.7	127.84		
38.00	37.6	3.8	127.86		
39.00	34.0	0.3	127.89		
40.00	36.2	2.4	127.91		
41.00	34.9	1.1	127.93		
42.00	34.7	1	127.95		
43.00	37.3	3.5	127.97		
44.00	37.5	3.8	127.98		
45.00	37.0	3.3	128.01		
46.00	35.6	1.8	128.03		
47.00	37.7	3.9	128.05		
48.00	36.0	2.2	128.07		
49.00	34.8	1.1	128.09		
50.00	37.3	3.5	128.12		
51.00	39.4	5.6	128.14		
52.00	35.3	1.5	128.15		
53.00	36.2	2.4	128.18		
54.00	38.0	4.3	128.19		
55.00	36.3	2.5	128.21		
56.00	34.9	1.2	128.23		
57.00	37.4	3.7	128.24		
58.00	39.2	5.4	128.26		
59.00	37.4	3.6	128.28		

-----  
 ALPINE SUBSURFACE ELECTRONICS PROBE INCREMENTS LISTING  
 TEST: 8990 DST #4 Simpson "A" #1-4 Dolomite Res. & McCoy Pet.  
 DATE: 07/10/96                      TIME: 02:26:50  
 -----

	Time	Pressure PSIg	delta P PSIg	Temp. DEG F	(T+dT)/dT	P <sup>2</sup> /10 <sup>6</sup>
***** End Flow 2	60.00	36.8	3.1	128.30		
	61.00	38.7	5.0	128.32		
***** Start Shutin 2	0.00	38.7	0.0	128.32	0.0000	0.002
	1.00	40.3	1.5	128.34	92.0000	0.002
	2.00	41.7	3.0	128.35	46.5000	0.002
	3.00	43.2	4.5	128.38	31.3333	0.002
	4.00	45.0	6.3	128.39	23.7500	0.002
	5.00	46.3	7.5	128.42	19.2000	0.002
	6.00	48.0	9.2	128.43	16.1667	0.002
	7.00	49.5	10.8	128.46	14.0000	0.002
	8.00	50.6	11.9	128.48	12.3750	0.003
	9.00	52.1	13.4	128.50	11.1111	0.003
	10.00	53.4	14.7	128.51	10.1000	0.003
	11.00	54.7	16.0	128.53	9.2727	0.003
	12.00	56.1	17.3	128.55	8.5833	0.003
	13.00	57.5	18.7	128.58	8.0000	0.003
	14.00	58.4	19.6	128.59	7.5000	0.003
	15.00	59.7	20.9	128.60	7.0667	0.004
	16.00	60.7	21.9	128.62	6.6875	0.004
	17.00	62.1	23.4	128.64	6.3529	0.004
	18.00	63.3	24.6	128.67	6.0556	0.004
	19.00	64.4	25.7	128.68	5.7895	0.004
	20.00	65.8	27.0	128.70	5.5500	0.004
	21.00	66.8	28.1	128.71	5.3333	0.004
	22.00	67.9	29.1	128.73	5.1364	0.005
	23.00	69.1	30.3	128.74	4.9565	0.005
	24.00	70.2	31.5	128.75	4.7917	0.005
	25.00	71.3	32.5	128.78	4.6400	0.005
	26.00	72.5	33.8	128.79	4.5000	0.005
	27.00	73.5	34.8	128.82	4.3704	0.005
	28.00	74.5	35.7	128.83	4.2500	0.006
	29.00	75.6	36.9	128.85	4.1379	0.006
	30.00	76.5	37.8	128.86	4.0333	0.006
	31.00	77.6	38.9	128.88	3.9355	0.006
	32.00	78.6	39.8	128.89	3.8438	0.006
	33.00	79.6	40.8	128.91	3.7576	0.006
	34.00	80.6	41.9	128.92	3.6765	0.006
	35.00	81.7	42.9	128.94	3.6000	0.007
	36.00	82.5	43.8	128.95	3.5278	0.007
	37.00	83.4	44.7	128.97	3.4595	0.007
	38.00	84.5	45.8	128.99	3.3947	0.007
	39.00	85.3	46.5	129.00	3.3333	0.007
	40.00	86.2	47.5	129.01	3.2750	0.007
	41.00	87.2	48.5	129.03	3.2195	0.008
	42.00	88.2	49.4	129.04	3.1667	0.008
	43.00	89.0	50.2	129.06	3.1163	0.008
	44.00	90.0	51.2	129.07	3.0682	0.008
	45.00	90.8	52.1	129.09	3.0222	0.008
	46.00	91.7	53.0	129.10	2.9783	0.008
	47.00	92.7	53.9	129.12	2.9362	0.009
	48.00	93.5	54.8	129.15	2.8958	0.009

ALPINE SUBSURFACE ELECTRONICS PROBE INCREMENTS LISTING

TEST: 8990 DST #4 Simpson "A" #1-4 Dolomite Res. & McCoy Pet.

DATE: 07/10/96 TIME: 02:26:50

	Time	Pressure PSig	delta P PSig	Temp. DEG F	(T+dT)/dT	P <sup>2</sup> /10 <sup>6</sup>	
	49.00	94.3	55.5	129.15	2.8571	0.009	
	50.00	95.4	56.7	129.17	2.8200	0.009	
	51.00	96.1	57.4	129.18	2.7843	0.009	
	52.00	96.9	58.1	129.19	2.7500	0.009	
	53.00	97.6	58.8	129.22	2.7170	0.01	
	54.00	98.3	59.5	129.23	2.6852	0.01	
	55.00	99.4	60.6	129.24	2.6545	0.01	
	56.00	100.1	61.4	129.26	2.6250	0.010	
	57.00	101.0	62.3	129.27	2.5965	0.010	
	58.00	102.0	63.3	129.28	2.5690	0.010	
	59.00	102.8	64.0	129.30	2.5424	0.011	
	60.00	103.5	64.8	129.31	2.5167	0.011	
	61.00	104.3	65.6	129.32	2.4918	0.011	
	62.00	105.0	66.2	129.35	2.4677	0.011	
	63.00	105.7	67.0	129.36	2.4444	0.011	
	64.00	106.5	67.8	129.37	2.4219	0.011	
	65.00	107.3	68.6	129.39	2.4000	0.012	
	66.00	108.1	69.4	129.41	2.3788	0.012	
	67.00	109.0	70.3	129.41	2.3582	0.012	
	68.00	109.8	71.0	129.42	2.3382	0.012	
	69.00	110.6	71.9	129.45	2.3188	0.012	
	70.00	111.3	72.6	129.46	2.3000	0.012	
	71.00	112.2	73.5	129.47	2.2817	0.013	
	72.00	112.9	74.2	129.49	2.2639	0.013	
	73.00	113.5	74.8	129.51	2.2466	0.013	
	74.00	114.5	75.7	129.51	2.2297	0.013	
	75.00	115.1	76.4	129.53	2.2133	0.013	
	76.00	115.9	77.1	129.54	2.1974	0.013	
	77.00	116.5	77.7	129.56	2.1818	0.014	
	78.00	117.4	78.6	129.57	2.1667	0.014	
	79.00	118.1	79.4	129.58	2.1519	0.014	
	80.00	118.7	80.0	129.61	2.1375	0.014	
	81.00	119.3	80.6	129.62	2.1235	0.014	
	82.00	120.0	81.3	129.66	2.1098	0.014	
	83.00	121.0	82.3	129.64	2.0964	0.015	
	84.00	121.6	82.9	129.65	2.0833	0.015	
	85.00	122.3	83.6	129.66	2.0706	0.015	
	86.00	123.3	84.5	129.68	2.0581	0.015	
	87.00	123.8	85.0	129.70	2.0460	0.015	
*****	End Shut-in 2	88.00	124.4	85.6	129.70	2.0341	0.015
*****	Final Hydro.	381.00	2541.3	0.0	129.85		

\*\*\* TOOL DIAGRAM \*\*\* CONV.

WELL NAME: Simpson A #1-4

LOCATION : 4-31S-33W, Seward Cty KS

TICKET No. 8990 D.S.T. No. 4 DATE 7/10/96

TOTAL TOOL TO BOTTOM OF TOP PACKERS ..... 27

INTERVAL TOOL .....

BOTTOM PACKERS AND ANCHOR ..... 29

TOTAL TOOL ..... 56

DRILL COLLAR ANCHOR IN INTERVAL .....

D.C. ANCHOR STND.Stands Single 1 Total 31

D.P. ANCHOR STND.Stands Single Total

TOTAL ASSEMBLY ..... 87

D.C. ABOVE TOOLS.Stands2 Single 2 Total 241

D.P. ABOVE TOOLS.Stands54 Single Total 5099

TOTAL DRILL COLLARS DRILL PIPE & TOOLS .. 5427

TOTAL DEPTH ..... 5400

TOTAL DRILL PIPE ABOVE K.B. .... 27

REMARKS:

P.O. SUB	5313
C.O. SUB	5319
S.I. TOOL	5319
HMV Hyd. Tool	5324
JARS	5329
SAFETY JOINT	5331
PACKER	5335
PACKER	5340
DEPTH 5340	
STUBB Perf 3 ft.	5343
ANCHOR Pick up sub 5 ft.	5348
Alpine Rec. @	5349
Perf 5 ft.	5353
Perf 5 ft.	5358
Perf 4 ft	5362
C.O. 1 ft	5363
T.C.	
DEPTH	
Drill Collars 31ft	5394
C.O. 1 ft	5395
AK-1 recorder	5397
BULLNOSE Bull Plug 5 ft	
T.D.	5400

TRILOBITE TESTING L.L.C.

OPERATOR : Dolomite Resources/McCoy  
 WELL NAME: Simpson "A" #1-4  
 LOCATION : 4-31S-33W, Seward Cty KS  
 INTERVAL : 5448.00 To 5478.00 ft

DATE 7/11/96  
 KB 2930.00 ft TICKET NO: 8991 DST #5  
 GR 2917.00 ft FORMATION: Chester  
 TD 5478.00 ft TEST TYPE: CONV.

RECORDER DATA

Mins		Field	1	2	3	4	TIME DATA-----
PF 30	Rec.	11038	11038	3024			PF Fr. 0330 to 0400 hr
SI 60	Range(Psi )	5075.0	5075.0	4995.0	0.0	0.0	IS Fr. 0400 to 0500 hr
SF 30	Clock(hrs)	12	12	Alpin			SF Fr. 0500 to 0530 hr
FS 60	Depth(ft )	5475.0	5475.0	5456.0	0.0	0.0	FS Fr. 0530 to 0630 hr

	Field	1	2	3	4	
A. Init Hydro	2814.0	2787.0	2720.0	0.0	0.0	T STARTED 0120 hr
B. First Flow	27.0	34.0	24.0	0.0	0.0	T ON BOTM 0328 hr
B1. Final Flow	27.0	34.0	25.0	0.0	0.0	T OPEN 0330 hr
C. In Shut-in	41.0	52.0	46.0	0.0	0.0	T PULLED 0630 hr
D. Init Flow	27.0	31.0	24.0	0.0	0.0	T OUT 0845 hr
E. Final Flow	41.0	50.0	44.0	0.0	0.0	
F. Fl Shut-in	55.0	66.0	77.0	0.0	0.0	
G. Final Hydro	2735.0	2609.0	2549.0	0.0	0.0	
Inside/Outside	0	0	I			

TOOL DATA-----

Tool Wt.	1800.00 lbs
Wt Set On Packer	25000.00 lbs
Wt Pulled Loose	130000.00 lbs
Initial Str Wt	110000.00 lbs
Unseated Str Wt	110000.00 lbs
Bot Choke	0.75 in
Hole Size	7.88 in
D Col. ID	2.25 in
D. Pipe ID	3.80 in
D.C. Length	272.00 ft
D.P. Length	5161.00 ft

RECOVERY

Tot Fluid 10.00 ft of 10.00 ft in DC and 0.00 ft in DP  
 10.00 ft of Drilling mud

SALINITY 0.00 P.P.M. A.P.I. Gravity 0.00

BLOW DESCRIPTION

Initial Flow -  
 Surface blow, died in 10 min

Final Flow -

No blow, flushed tool, got surge,  
 no blow

SAMPLES: No  
 SENT TO:

MUD DATA-----

Mud Type	Chemical
Weight	9.10 lb/cf
Vis.	50.00 S/L
W.L.	8.00 in <sup>3</sup>
F.C.	0.00 in
Mud Drop Y	20.0 ft
Amt. of fill	0.00 ft
Btm. H. Temp.	130.00 F
Hole Condition	Good
% Porosity	0.00
Packer Size	6.75 in
No. of Packers	2
Cushion Amt.	0.00
Cushion Type	
Reversed Out N	
Tool Chased N	
Tester	TOM HORACEK
Co. Rep.	DAVE GOLDAK
Contr.	Sweetman Drlg.
Rig #	1
Unit #	
Pump T.	

Test Successful: Y

# TEST HISTORY

8991 DST #5 Simpson "A" #1-4 Dolomite Res. & McCoy Pet.

## Flag Points

	t (Min.)	P (PSig)
A:	0.00	2720.00
B:	0.00	24.16
C:	31.00	24.56
D:	60.00	45.89
E:	0.00	24.40
F:	32.00	43.64
G:	58.00	77.31
Q:	0.00	2548.75

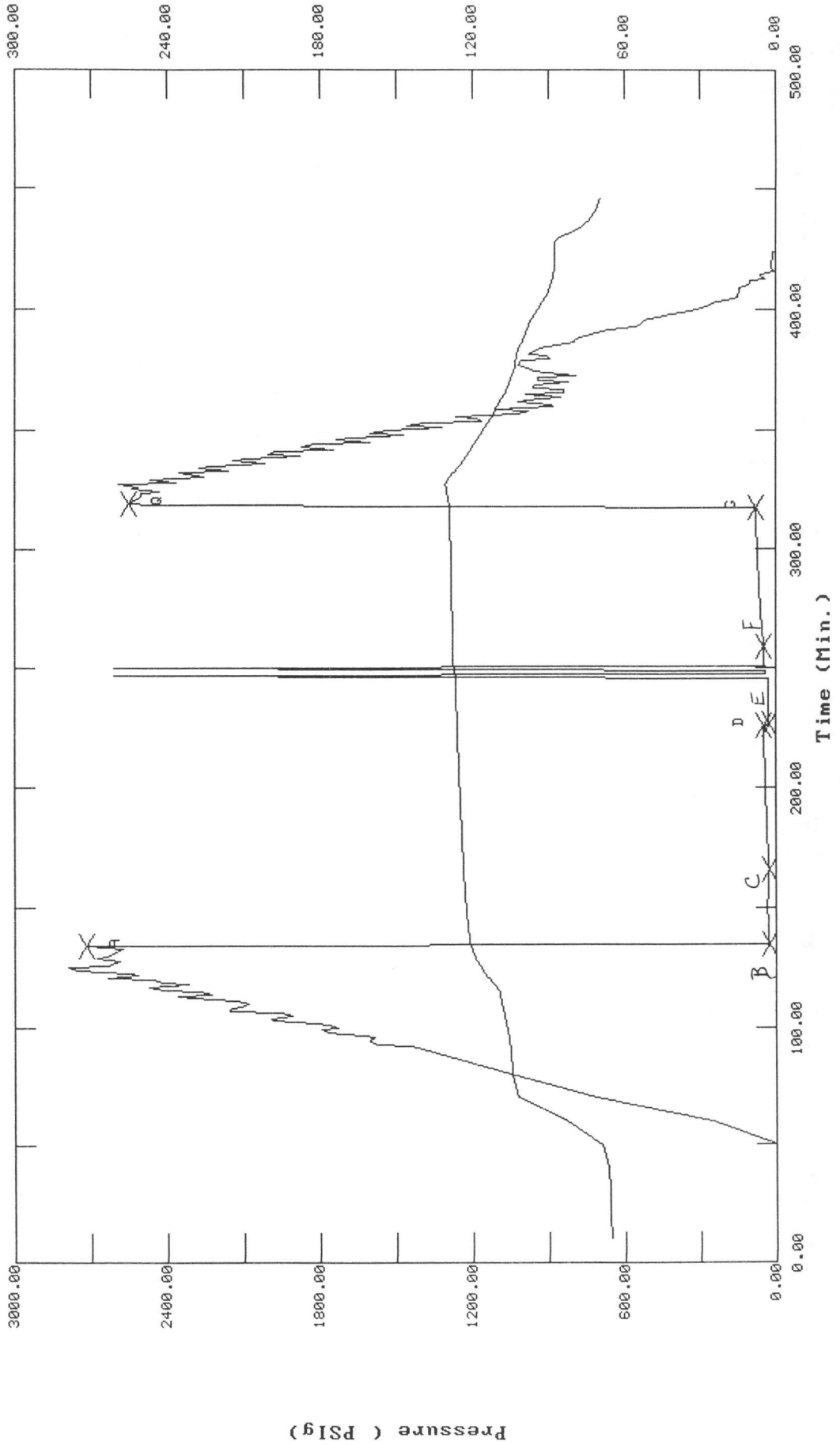
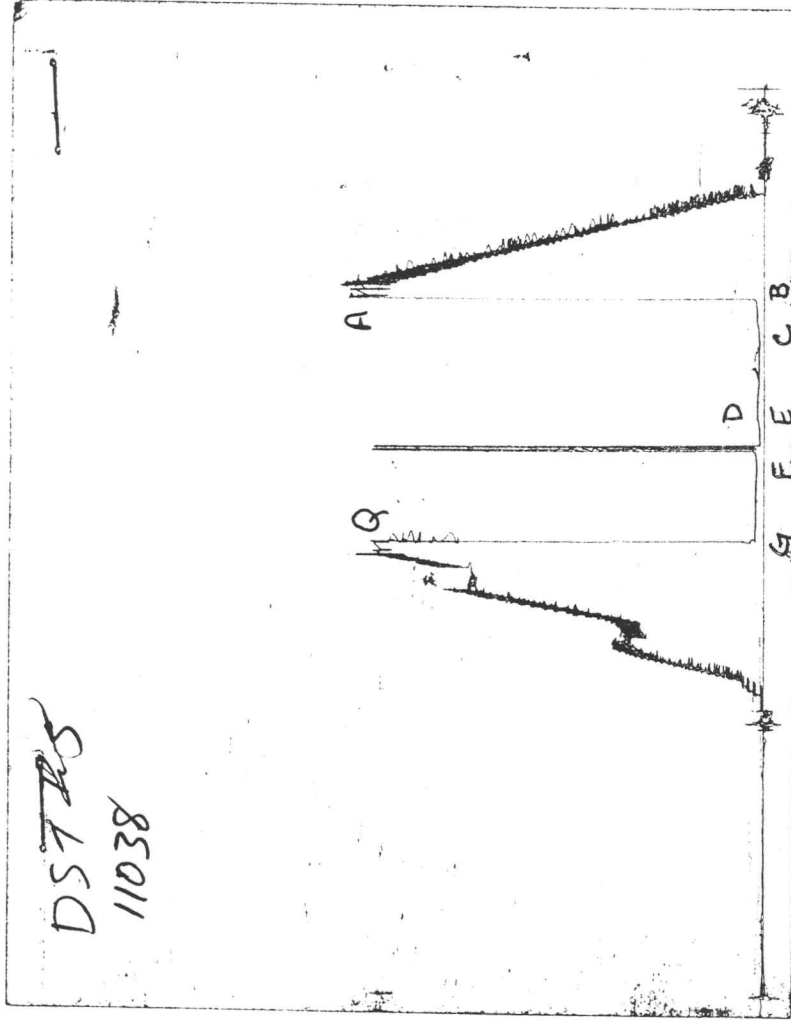


CHART PAGE



This is a photocopy of the actual AK-1 recorder chart

ALPINE SUBSURFACE ELECTRONICS PROBE INCREMENTS LISTING

TEST: 8991 DST #5 Simpson "A" #1-4 Dolomite Res. & McCoy Pet.

DATE: 07/11/96 TIME: 01:10:34

	Time	Pressure PSIg	delta P PSIg	Temp. DEG F	(T+dT)/dT	P <sup>2</sup> /10 <sup>6</sup>
***** Initial Hydro.	134.00	2720.0	0.0	120.37		
***** Start Flow 1	0.00	24.2	0.0	120.69		
	1.00	25.5	1.4	120.93		
	2.00	26.3	2.2	121.07		
	3.00	27.4	3.3	121.19		
	4.00	27.8	3.6	121.31		
	5.00	28.2	4.0	121.43		
	6.00	27.9	3.7	121.55		
	7.00	28.4	4.3	121.68		
	8.00	28.4	4.3	121.81		
	9.00	28.9	4.7	121.92		
	10.00	30.3	6.1	122.02		
	11.00	29.1	4.9	122.12		
	12.00	30.1	6.0	122.22		
	13.00	31.5	7.3	122.31		
	14.00	31.2	7.0	122.39		
	15.00	32.3	8.1	122.47		
	16.00	33.3	9.1	122.54		
	17.00	34.2	10.1	122.62		
	18.00	34.2	10.0	122.68		
	19.00	25.0	0.8	122.76		
	20.00	25.6	1.5	122.82		
	21.00	25.1	0.9	122.88		
	22.00	26.0	1.9	122.95		
	23.00	26.6	2.5	123.01		
	24.00	25.1	0.9	123.07		
	25.00	26.1	2.0	123.13		
	26.00	26.9	2.7	123.18		
	27.00	27.3	3.1	123.23		
	28.00	25.9	1.8	123.29		
	29.00	26.7	2.5	123.34		
	30.00	27.4	3.2	123.40		
***** End Flow 1	31.00	24.6	0.4	123.44		
***** Start Shutin 1	0.00	24.6	0.0	123.44	0.0000	0.001
	1.00	25.7	1.2	123.50	32.0000	0.001
	2.00	26.4	1.8	123.55	16.5000	0.001
	3.00	27.0	2.4	123.61	11.3333	0.001
	4.00	27.4	2.9	123.66	8.7500	0.001
	5.00	28.0	3.4	123.71	7.2000	0.001
	6.00	28.5	3.9	123.76	6.1667	0.001
	7.00	29.0	4.4	123.81	5.4286	0.001
	8.00	29.4	4.8	123.86	4.8750	0.001
	9.00	29.8	5.3	123.91	4.4444	0.001
	10.00	30.3	5.7	123.96	4.1000	0.001
	11.00	30.7	6.1	124.01	3.8182	0.001
	12.00	31.1	6.5	124.05	3.5833	0.001
	13.00	31.6	7.0	124.10	3.3846	0.001
	14.00	31.9	7.4	124.14	3.2143	0.001
	15.00	32.3	7.8	124.19	3.0667	0.001
	16.00	32.7	8.2	124.24	2.9375	0.001
	17.00	33.1	8.6	124.29	2.8235	0.001

-----  
 ALPINE SUBSURFACE ELECTRONICS PROBE INCREMENTS LISTING

TEST: 8991 DST #5 Simpson "A" #1-4 Dolomite Res. & McCoy Pet.

DATE: 07/11/96

TIME: 01:10:34  
 -----

	Time	Pressure PSig	delta P PSig	Temp. DEG F	(T+dT)/dT	P <sup>2</sup> /10 <sup>6</sup>
	18.00	33.5	8.9	124.34	2.7222	0.001
	19.00	33.8	9.3	124.38	2.6316	0.001
	20.00	34.3	9.7	124.42	2.5500	0.001
	21.00	34.7	10.2	124.47	2.4762	0.001
	22.00	35.1	10.5	124.51	2.4091	0.001
	23.00	35.4	10.8	124.55	2.3478	0.001
	24.00	35.7	11.2	124.59	2.2917	0.001
	25.00	36.0	11.5	124.63	2.2400	0.001
	26.00	36.5	11.9	124.68	2.1923	0.001
	27.00	36.8	12.2	124.72	2.1481	0.001
	28.00	37.1	12.5	124.77	2.1071	0.001
	29.00	37.4	12.9	124.81	2.0690	0.001
	30.00	37.7	13.1	124.84	2.0333	0.001
	31.00	38.0	13.5	124.89	2.0000	0.001
	32.00	38.3	13.7	124.93	1.9688	0.001
	33.00	38.6	14.1	124.98	1.9394	0.001
	34.00	38.9	14.3	125.01	1.9118	0.002
	35.00	39.3	14.7	125.05	1.8857	0.002
	36.00	39.5	15.0	125.09	1.8611	0.002
	37.00	39.9	15.3	125.13	1.8378	0.002
	38.00	40.1	15.6	125.17	1.8158	0.002
	39.00	40.5	15.9	125.21	1.7949	0.002
	40.00	40.8	16.2	125.25	1.7750	0.002
	41.00	41.1	16.5	125.28	1.7561	0.002
	42.00	41.4	16.8	125.33	1.7381	0.002
	43.00	41.6	17.1	125.36	1.7209	0.002
	44.00	41.9	17.3	125.41	1.7045	0.002
	45.00	42.2	17.6	125.45	1.6889	0.002
	46.00	42.4	17.9	125.49	1.6739	0.002
	47.00	42.7	18.2	125.53	1.6596	0.002
	48.00	42.9	18.4	125.57	1.6458	0.002
	49.00	43.2	18.7	125.60	1.6327	0.002
	50.00	43.5	18.9	125.63	1.6200	0.002
	51.00	43.7	19.1	125.68	1.6078	0.002
	52.00	44.0	19.4	125.72	1.5962	0.002
	53.00	44.2	19.7	125.75	1.5849	0.002
	54.00	44.5	19.9	125.78	1.5741	0.002
	55.00	44.7	20.2	125.83	1.5636	0.002
	56.00	44.9	20.4	125.86	1.5536	0.002
	57.00	45.2	20.7	125.90	1.5439	0.002
	58.00	45.4	20.9	125.93	1.5345	0.002
	59.00	45.7	21.1	125.97	1.5254	0.002
***** End Shut-in 1	60.00	45.9	21.3	126.00	1.5167	0.002
***** Start Flow 2	0.00	24.4	0.0	126.03		
	1.00	25.5	1.1	126.07		
	2.00	26.0	1.6	126.10		
	3.00	26.3	1.9	126.13		
	4.00	26.5	2.1	126.17		
	5.00	26.7	2.3	126.20		
	6.00	27.1	2.7	126.23		
	7.00	25.2	0.8	126.27		

ALPINE SUBSURFACE ELECTRONICS PROBE INCREMENTS LISTING

TEST: 8991 DST #5 Simpson "A" #1-4 Dolomite Res. & McCoy Pet.

DATE: 07/11/96 TIME: 01:10:34

Time	Pressure PSig	delta P PSig	Temp. DEG F	(T+dT)/dT	P <sup>2</sup> /10 <sup>6</sup>
8.00	25.6	1.2	126.31		
9.00	26.0	1.6	126.34		
10.00	26.3	1.9	126.37		
11.00	26.5	2.1	126.40		
12.00	26.8	2.4	126.44		
13.00	27.0	2.6	126.47		
14.00	27.3	2.9	126.50		
15.00	27.6	3.2	126.53		
16.00	25.0	0.6	126.57		
17.00	25.5	1.1	126.60		
18.00	25.8	1.4	126.63		
19.00	26.1	1.7	126.67		
20.00	2611.5	2587.1	126.80		
21.00	37.2	12.8	126.94		
22.00	38.1	13.7	127.16		
23.00	2610.7	2586.3	127.41		
24.00	42.5	18.1	127.69		
25.00	42.9	18.5	127.84		
26.00	43.1	18.7	127.91		
27.00	43.2	18.8	127.94		
28.00	43.4	19.0	127.95		
29.00	43.5	19.1	127.94		
30.00	43.7	19.3	127.94		
31.00	43.8	19.4	127.93		
32.00	43.6	19.2	127.92		
0.00	43.6	0.0	127.92	0.0000	0.002
1.00	44.7	1.1	127.91	64.0000	0.002
2.00	45.9	2.3	127.90	32.5000	0.002
3.00	47.0	3.3	127.89	22.0000	0.002
4.00	48.0	4.4	127.89	16.7500	0.002
5.00	49.0	5.4	127.91	13.6000	0.002
6.00	50.0	6.3	127.90	11.5000	0.002
7.00	50.9	7.2	127.91	10.0000	0.003
8.00	51.8	8.1	127.91	8.8750	0.003
9.00	52.6	9.0	127.93	8.0000	0.003
10.00	53.4	9.8	127.95	7.3000	0.003
11.00	54.2	10.5	127.95	6.7273	0.003
12.00	54.9	11.3	127.97	6.2500	0.003
13.00	55.7	12.1	127.99	5.8462	0.003
14.00	56.4	12.7	128.00	5.5000	0.003
15.00	57.1	13.5	128.01	5.2000	0.003
16.00	57.8	14.2	128.03	4.9375	0.003
17.00	58.5	14.8	128.05	4.7059	0.003
18.00	59.1	15.5	128.07	4.5000	0.003
19.00	59.7	16.1	128.09	4.3158	0.004
20.00	60.3	16.7	128.11	4.1500	0.004
21.00	60.9	17.3	128.13	4.0000	0.004
22.00	61.5	17.9	128.15	3.8636	0.004
23.00	62.1	18.5	128.17	3.7391	0.004
24.00	62.7	19.0	128.19	3.6250	0.004
25.00	63.3	19.6	128.21	3.5200	0.004

\*\*\*\*\* End Flow 2

\*\*\*\*\* Start Shutin 2

ALPINE SUBSURFACE ELECTRONICS PROBE INCREMENTS LISTING

TEST: 8991 DST #5 Simpson "A" #1-4 Dolomite Res. & McCoy Pet.

DATE: 07/11/96

TIME: 01:10:34

	Time	Pressure PSig	delta P PSig	Temp. DEG F	(T+dT)/dT	P <sup>2</sup> /10 <sup>6</sup>
	26.00	63.8	20.1	128.23	3.4231	0.004
	27.00	64.4	20.7	128.26	3.3333	0.004
	28.00	64.8	21.2	128.28	3.2500	0.004
	29.00	65.4	21.7	128.30	3.1724	0.004
	30.00	65.9	22.2	128.32	3.1000	0.004
	31.00	66.4	22.7	128.35	3.0323	0.004
	32.00	66.8	23.2	128.37	2.9688	0.004
	33.00	67.3	23.7	128.40	2.9091	0.005
	34.00	67.8	24.2	128.41	2.8529	0.005
	35.00	68.3	24.6	128.43	2.8000	0.005
	36.00	68.7	25.1	128.45	2.7500	0.005
	37.00	69.2	25.5	128.48	2.7027	0.005
	38.00	69.6	26.0	128.50	2.6579	0.005
	39.00	70.1	26.4	128.52	2.6154	0.005
	40.00	70.5	26.8	128.54	2.5750	0.005
	41.00	70.9	27.2	128.57	2.5366	0.005
	42.00	71.3	27.6	128.58	2.5000	0.005
	43.00	71.7	28.1	128.60	2.4651	0.005
	44.00	72.1	28.5	128.63	2.4318	0.005
	45.00	72.5	28.9	128.65	2.4000	0.005
	46.00	72.9	29.3	128.67	2.3696	0.005
	47.00	73.3	29.7	128.70	2.3404	0.005
	48.00	73.7	30.1	128.71	2.3125	0.005
	49.00	74.1	30.5	128.74	2.2857	0.005
	50.00	74.5	30.8	128.76	2.2600	0.006
	51.00	74.9	31.2	128.78	2.2353	0.006
	52.00	75.2	31.6	128.79	2.2115	0.006
	53.00	75.6	31.9	128.82	2.1887	0.006
	54.00	75.9	32.3	128.84	2.1667	0.006
	55.00	76.3	32.7	128.87	2.1455	0.006
	56.00	76.7	33.0	128.90	2.1250	0.006
	57.00	77.0	33.3	128.91	2.1053	0.006
***** End Shut-in 2	58.00	77.3	33.7	128.93	2.0862	0.006
***** Final Hydro.	319.00	2548.8	0.0	129.13		

\*\*\* TOOL DIAGRAM \*\*\* CONV.

WELL NAME: Simpson "A" #1-4

LOCATION : 4-31S-33W, Seward Cty KS

TICKET No. 8991 D.S.T. No. 5 DATE 7/11/96

TOTAL TOOL TO BOTTOM OF TOP PACKERS ..... 27

INTERVAL TOOL .....

TOTAL PACKERS AND ANCHOR ..... 30

TOTAL TOOL ..... 57

DRILL COLLAR ANCHOR IN INTERVAL .....

D.C. ANCHOR STND.Stands Single Total

D.P. ANCHOR STND.Stands Single Total

TOTAL ASSEMBLY ..... 57

D.C. ABOVE TOOLS.Stands3 Single Total 272

D.P. ABOVE TOOLS.Stands54 Single 2 Total 5161

TOTAL DRILL COLLARS DRILL PIPE & TOOLS .. 5490

TOTAL DEPTH ..... 5478

TOTAL DRILL PIPE ABOVE K.B. .... 12

REMARKS:

P.O. SUB	
C.O. SUB	5421
S.I. TOOL	5427
HMV Hyd. Tool	5432
JARS	5437
SAFETY JOINT	5439
PACKER	5443
PACKER	5448
DEPTH 5448	
STUBB Perf 2 ft.	5450
ANCHOR Pick up sub 5 ft.	5455
Alpine Recorder	5456
Perf 5 ft.	5460
Perf 5 ft.	5465
Perf 5 ft.	5470
T.C. DEPTH	
Perf 3 ft.	5473
AK-1 Recorder	5475
BULLNOSE Bull Plug 5 ft.	
T.D.	5478

TRILOBITE TESTING L.L.C.

OPERATOR : Dolomite Resources/McCoy  
 WELL NAME: Simpson A #1-4  
 LOCATION : 4-31S-33W, Seward Cty KS  
 INTERVAL : 5574.00 To 5597.00 ft

DATE 7/11/96  
 KB 2930.00 ft TICKET NO: 8992 DST #6  
 GR 2917.00 ft FORMATION: St. Louis  
 TD 5597.00 ft TEST TYPE: CONV.

RECORDER DATA

Mins	Field	1	2	3	4	TIME DATA-----
PF 30 Rec.	11038	11038	3024			PF Fr. 2335 to 0005 hr
SI 60 Range (Psi )	5075.0	5075.0	4995.0	0.0	0.0	IS Fr. 0005 to 0105 hr
SF 30 Clock (hrs)	12 hr	12 hr	Alpin			SF Fr. 0105 to 0135 hr
FS 60 Depth (ft )	5594.0	5594.0	5583.0	0.0	0.0	FS Fr. 0135 to 0235 hr

	Field	1	2	3	4	
A. Init Hydro	2812.0	2812.0	2723.0	0.0	0.0	T STARTED 2145 hr
B. First Flow	14.0	22.0	21.0	0.0	0.0	T ON BOTM 2333 hr
B1. Final Flow	14.0	22.0	23.0	0.0	0.0	T OPEN 2335 hr
C. In Shut-in	1436.0	1439.0	1470.0	0.0	0.0	T PULLED 0235 hr
D. Init Flow	14.0	25.0	25.0	0.0	0.0	T OUT 0500 hr
E. Final Flow	14.0	31.0	28.0	0.0	0.0	
F. Fl Shut-in	1310.0	1316.0	1348.0	0.0	0.0	TOOL DATA-----
G. Final Hydro	2696.0	2694.0	2526.0	0.0	0.0	Tool Wt. 1800.00 lbs
Inside/Outside	0	0	I			Wt Set On Packer 25000.00 lbs

RECOVERY

Tot Fluid 10.00 ft of 10.00 ft in DC and 0.00 ft in DP  
 10.00 ft of Drilling mud

Unseated Str Wt	112000.00 lbs
Bot Choke	0.75 in
Hole Size	7.88 in
D Col. ID	2.25 in
D. Pipe ID	3.80 in
D.C. Length	272.00 ft
D.P. Length	5287.00 ft

SALINITY 0.00 P.P.M. A.P.I. Gravity 0.00

BLOW DESCRIPTION

Initial Flow -  
 Weak surface blow, died in 5 min  
 Final Flow -  
 No blow, flushed tool & got surge,  
 no blow

MUD DATA-----

Mud Type	Chemical
Weight	9.10 lb/cf
Vis.	49.00 S/L
W.L.	9.60 in3
F.C.	0.00 in
Mud Drop Y	10.0 ft
Amt. of fill	0.00 ft
Btm. H. Temp.	131.00 F
Hole Condition	Good
% Porosity	0.00
Packer Size	6.75 in
No. of Packers	2
Cushion Amt.	0.00
Cushion Type	
Reversed Out N	
Tool Chased N	
Tester	TOM HORACEK
Co. Rep.	DAVE GOLDAK
Contr.	Sweetman Drlg.
Rig #	1
Unit #	
Pump T.	

SAMPLES: No  
 SENT TO:

Test Successful: Y

# TEST HISTORY

8992 DST #6 Simpson "A" #1-4 Dolomite Res. & McCoy Pet.

## Flag Points

t (Min.) P (PSIg)

A:	0.00	2722.55
B:	0.00	21.05
C:	30.00	23.44
D:	62.00	1469.84
E:	0.00	24.92
F:	29.00	28.28
G:	58.00	1348.12
Q:	0.00	2526.42

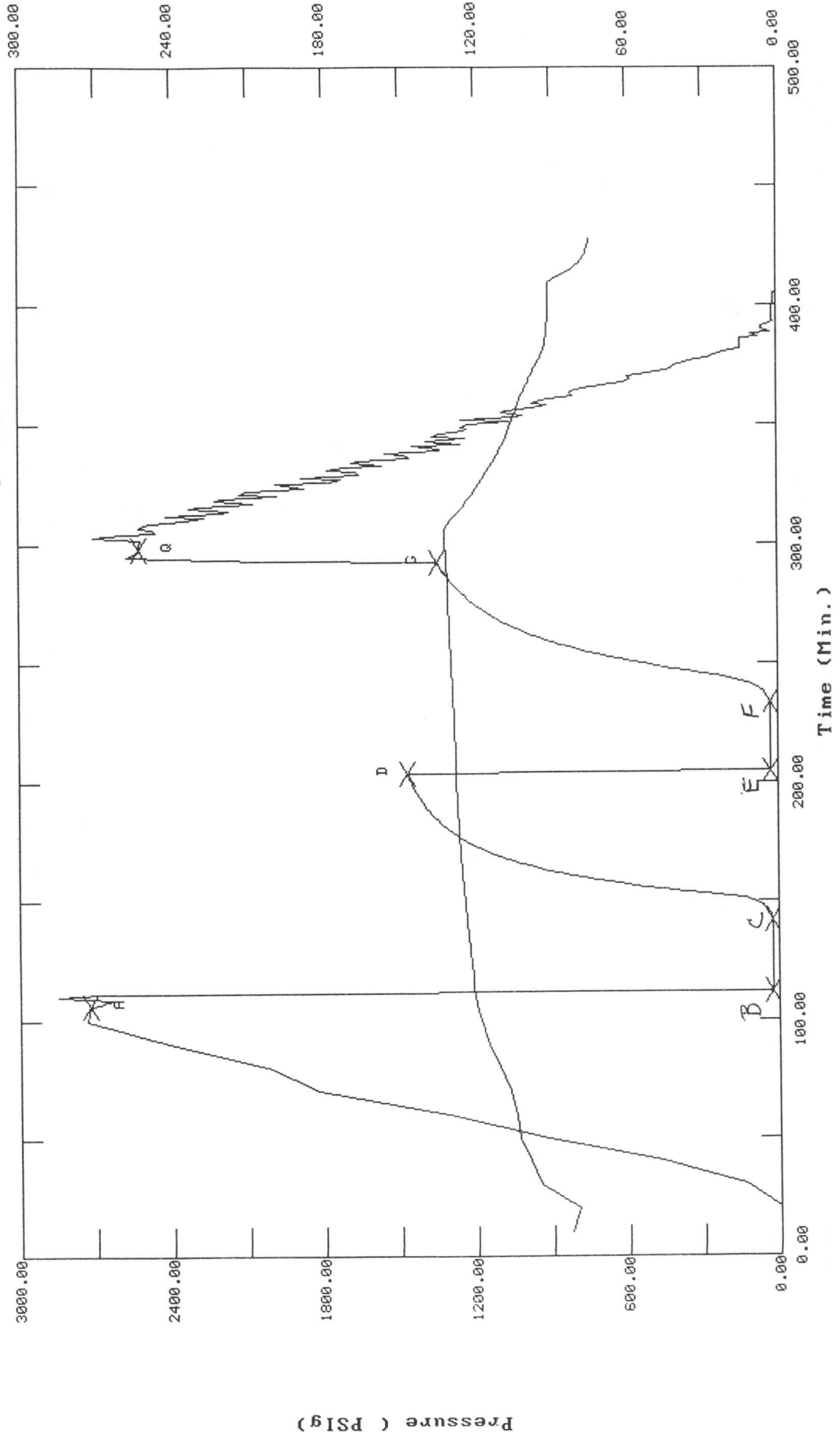
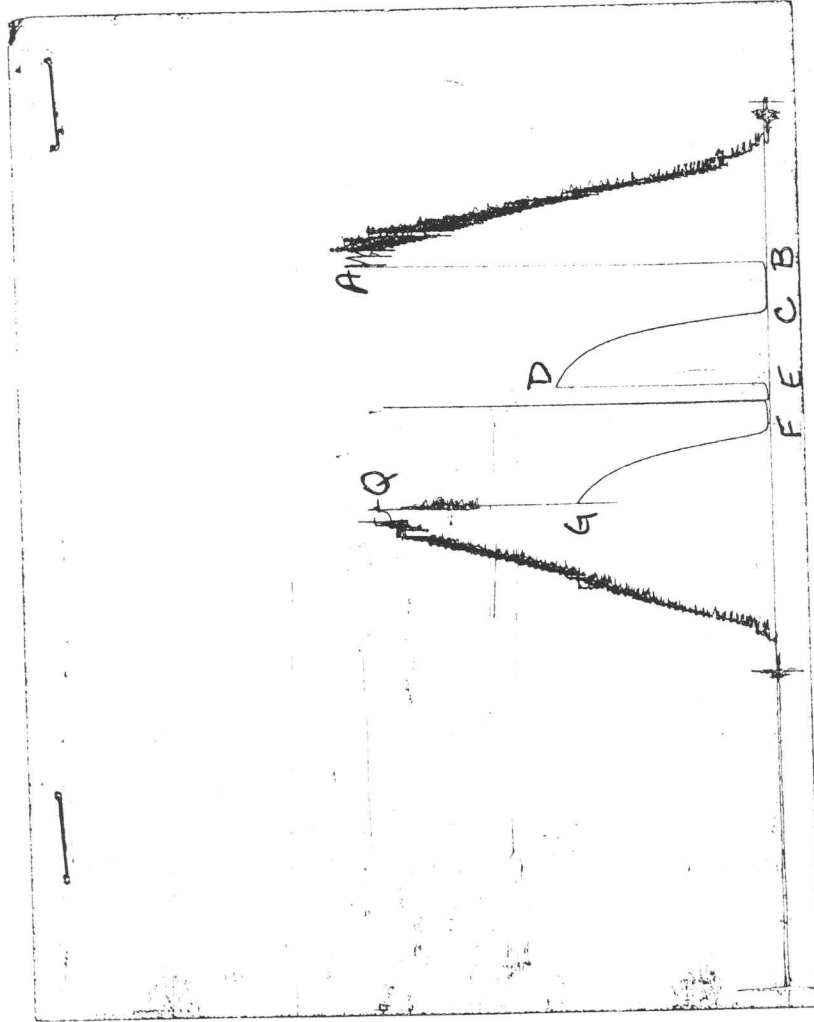


CHART PAGE



This is a photocopy of the actual AK-1 recorder chart

ALPINE SUBSURFACE ELECTRONICS PROBE INCREMENTS LISTING

TEST: 8992 DST #6 Simpson "A" #1-4 Dolomite Res. & McCoy Pet.

DATE: 07/11/96 TIME: 21:42:00

	Time	Pressure PSIg	delta P PSIg	Temp. DEG F	(T+dT)/dT	P^2/10^6
***** Initial Hydro.	106.00	2722.5	0.0	119.69		
***** Start Flow 1	0.00	21.1	0.0	120.94		
	1.00	21.6	0.6	120.96		
	2.00	21.9	0.9	120.96		
	3.00	22.2	1.1	120.97		
	4.00	22.4	1.3	121.01		
	5.00	22.6	1.5	121.07		
	6.00	22.7	1.7	121.13		
	7.00	22.9	1.8	121.21		
	8.00	23.0	1.9	121.31		
	9.00	23.1	2.0	121.40		
	10.00	23.2	2.1	121.51		
	11.00	23.3	2.2	121.62		
	12.00	23.4	2.3	121.73		
	13.00	23.4	2.4	121.84		
	14.00	23.4	2.3	121.95		
	15.00	23.4	2.4	122.06		
	16.00	23.5	2.4	122.16		
	17.00	23.5	2.4	122.27		
	18.00	23.4	2.3	122.39		
	19.00	23.3	2.2	122.48		
	20.00	23.4	2.4	122.58		
	21.00	23.4	2.4	122.69		
	22.00	23.4	2.4	122.79		
	23.00	23.5	2.5	122.89		
	24.00	23.5	2.5	122.98		
	25.00	23.6	2.5	123.08		
	26.00	23.4	2.4	123.17		
	27.00	23.6	2.5	123.27		
	28.00	23.5	2.4	123.36		
	29.00	23.4	2.4	123.45		
***** End Flow 1	30.00	23.4	2.4	123.54		
***** Start Shutin 1	0.00	23.4	0.0	123.54	0.0000	0.001
	1.00	24.9	1.5	123.63	31.0000	0.001
	2.00	28.9	5.5	123.72	16.0000	0.001
	3.00	34.0	10.6	123.81	11.0000	0.001
	4.00	40.5	17.1	123.89	8.5000	0.002
	5.00	48.8	25.4	123.97	7.0000	0.002
	6.00	59.6	36.2	124.06	6.0000	0.004
	7.00	74.6	51.2	124.14	5.2857	0.006
	8.00	96.7	73.3	124.23	4.7500	0.009
	9.00	129.3	105.9	124.31	4.3333	0.017
	10.00	194.2	170.8	124.40	4.0000	0.038
	11.00	283.9	260.5	124.49	3.7273	0.081
	12.00	372.5	349.1	124.57	3.5000	0.139
	13.00	455.1	431.7	124.66	3.3077	0.207
	14.00	530.4	507.0	124.76	3.1429	0.281
	15.00	599.1	575.6	124.84	3.0000	0.359
	16.00	662.0	638.6	124.94	2.8750	0.438
	17.00	719.8	696.3	125.03	2.7647	0.518
	18.00	772.9	749.5	125.11	2.6667	0.597

ALPINE SUBSURFACE ELECTRONICS PROBE INCREMENTS LISTING  
 TEST: 8992 DST #6 Simpson "A" #1-4 Dolomite Res. & McCoy Pet.  
 DATE: 07/11/96 TIME: 21:42:00

Time	Pressure PSig	delta P PSig	Temp. DEG F	(T+dT)/dT	P <sup>2</sup> /10 <sup>6</sup>
19.00	821.9	798.5	125.21	2.5789	0.676
20.00	867.1	843.6	125.29	2.5000	0.752
21.00	908.8	885.4	125.38	2.4286	0.826
22.00	947.3	923.9	125.46	2.3636	0.897
23.00	983.0	959.6	125.53	2.3043	0.966
24.00	1016.0	992.5	125.62	2.2500	1.032
25.00	1046.6	1023.2	125.70	2.2000	1.095
26.00	1075.1	1051.7	125.77	2.1538	1.156
27.00	1101.7	1078.2	125.84	2.1111	1.214
28.00	1126.4	1102.9	125.91	2.0714	1.269
29.00	1149.4	1126.0	125.97	2.0345	1.321
30.00	1171.0	1147.5	126.04	2.0000	1.371
31.00	1191.1	1167.6	126.11	1.9677	1.419
32.00	1209.9	1186.5	126.18	1.9375	1.464
33.00	1227.6	1204.1	126.24	1.9091	1.507
34.00	1244.1	1220.7	126.31	1.8824	1.548
35.00	1259.6	1236.2	126.37	1.8571	1.587
36.00	1274.2	1250.8	126.43	1.8333	1.624
37.00	1288.0	1264.5	126.49	1.8108	1.659
38.00	1300.9	1277.4	126.54	1.7895	1.692
39.00	1313.0	1289.6	126.60	1.7692	1.724
40.00	1324.6	1301.1	126.66	1.7500	1.754
41.00	1335.4	1312.0	126.71	1.7317	1.783
42.00	1345.7	1322.3	126.77	1.7143	1.811
43.00	1355.4	1332.0	126.83	1.6977	1.837
44.00	1364.6	1341.1	126.88	1.6818	1.862
45.00	1373.3	1349.8	126.93	1.6667	1.886
46.00	1381.5	1358.0	126.99	1.6522	1.908
47.00	1389.3	1365.8	127.05	1.6383	1.930
48.00	1396.7	1373.2	127.09	1.6250	1.951
49.00	1403.7	1380.3	127.15	1.6122	1.970
50.00	1410.5	1387.0	127.20	1.6000	1.989
51.00	1416.9	1393.4	127.25	1.5882	2.008
52.00	1422.9	1399.5	127.30	1.5769	2.025
53.00	1428.6	1405.2	127.35	1.5660	2.041
54.00	1434.2	1410.7	127.40	1.5556	2.057
55.00	1439.4	1415.9	127.45	1.5455	2.072
56.00	1444.4	1420.9	127.50	1.5357	2.086
57.00	1449.1	1425.7	127.55	1.5263	2.100
58.00	1453.7	1430.2	127.59	1.5172	2.113
59.00	1458.0	1434.6	127.64	1.5085	2.126
60.00	1462.1	1438.6	127.68	1.5000	2.138
61.00	1466.1	1442.6	127.73	1.4918	2.149
62.00	1469.8	1446.4	127.78	1.4839	2.160
***** End Shut-in 1					
***** Start Flow 2					
0.00	24.9	0.0	127.83		
1.00	25.2	0.2	127.82		
2.00	25.3	0.4	127.80		
3.00	25.5	0.6	127.78		
4.00	25.6	0.7	127.78		
5.00	25.7	0.8	127.78		
6.00	25.8	0.9	127.81		

ALPINE SUBSURFACE ELECTRONICS PROBE INCREMENTS LISTING

TEST: 8992 DST #6 Simpson "A" #1-4 Dolomite Res. & McCoy Pet.  
 DATE: 07/11/96 TIME: 21:42:00

	Time	Pressure PSIg	delta P PSIg	Temp. DEG F	(T+dT)/dT	P^2/10^6
	7.00	25.9	1	127.81		
	8.00	26.0	1.0	127.85		
	9.00	26.0	1.1	127.89		
	10.00	26.1	1.2	127.93		
	11.00	26.0	1.1	127.98		
	12.00	26.1	1.2	128.01		
	13.00	28.3	3.4	128.19		
	14.00	28.7	3.7	128.20		
	15.00	28.8	3.9	128.22		
	16.00	28.9	3.9	128.23		
	17.00	28.9	4.0	128.26		
	18.00	29.0	4.0	128.28		
	19.00	29.0	4.0	128.31		
	20.00	29.1	4.1	128.36		
	21.00	29.2	4.3	128.40		
	22.00	29.3	4.3	128.43		
	23.00	29.2	4.3	128.48		
	24.00	29.4	4.4	128.53		
	25.00	29.3	4.4	128.57		
	26.00	29.3	4.4	128.61		
	27.00	29.4	4.5	128.66		
	28.00	29.4	4.5	128.70		
<*****	End Flow 2	29.00	28.3	3.4	128.74	
<*****	Start Shutin 2	0.00	28.3	0.0	128.74	0.0000
		1.00	32.3	4.1	128.78	60.0000
		2.00	37.4	9.1	128.83	30.5000
		3.00	43.6	15.3	128.88	20.6667
		4.00	51.4	23.1	128.92	15.7500
		5.00	61.3	33.1	128.96	12.8000
		6.00	74.5	46.2	129.01	10.8333
		7.00	92.2	63.9	129.06	9.4286
		8.00	116.3	88.1	129.10	8.3750
		9.00	149.1	120.8	129.14	7.5556
		10.00	190.6	162.3	129.19	6.9000
		11.00	242.1	213.8	129.24	6.3636
		12.00	299.8	271.5	129.29	5.9167
		13.00	359.6	331.4	129.33	5.5385
		14.00	418.8	390.6	129.39	5.2143
		15.00	475.8	447.5	129.44	4.9333
		16.00	529.5	501.2	129.49	4.6875
		17.00	580.5	552.2	129.55	4.4706
		18.00	628.4	600.1	129.60	4.2778
		19.00	673.4	645.1	129.65	4.1053
		20.00	715.7	687.4	129.70	3.9500
		21.00	755.4	727.1	129.76	3.8095
		22.00	792.6	764.4	129.81	3.6818
		23.00	827.7	799.4	129.85	3.5652
		24.00	860.6	832.3	129.90	3.4583
		25.00	891.5	863.2	129.95	3.3600
		26.00	920.6	892.3	129.99	3.2692
		27.00	948.0	919.7	130.03	3.1852

-----  
 ALPINE SUBSURFACE ELECTRONICS PROBE INCREMENTS LISTING  
 TEST: 8992 DST #6 Simpson "A" #1-4 Dolomite Res. & McCoy Pet.  
 DATE: 07/11/96 TIME: 21:42:00  
 -----

	Time	Pressure PSig	delta P PSig	Temp. DEG F	(T+dT)/dT	P^2/10^6
	28.00	973.8	945.5	130.08	3.1071	0.948
	29.00	998.0	969.8	130.12	3.0345	0.996
	30.00	1021.0	992.7	130.16	2.9667	1.042
	31.00	1042.6	1014.3	130.21	2.9032	1.087
	32.00	1062.9	1034.7	130.25	2.8438	1.130
	33.00	1082.2	1053.9	130.29	2.7879	1.171
	34.00	1100.4	1072.1	130.33	2.7353	1.211
	35.00	1117.6	1089.3	130.37	2.6857	1.249
	36.00	1134.0	1105.7	130.40	2.6389	1.286
	37.00	1149.4	1121.1	130.44	2.5946	1.321
	38.00	1164.0	1135.7	130.49	2.5526	1.355
	39.00	1177.7	1149.4	130.52	2.5128	1.387
	40.00	1190.8	1162.5	130.55	2.4750	1.418
	41.00	1203.3	1175.1	130.59	2.4390	1.448
	42.00	1215.2	1187.0	130.62	2.4048	1.477
	43.00	1226.6	1198.3	130.66	2.3721	1.505
	44.00	1237.4	1209.1	130.69	2.3409	1.531
	45.00	1247.8	1219.5	130.73	2.3111	1.557
	46.00	1257.6	1229.4	130.75	2.2826	1.582
	47.00	1267.0	1238.8	130.79	2.2553	1.605
	48.00	1276.1	1247.8	130.82	2.2292	1.628
	49.00	1284.8	1256.5	130.85	2.2041	1.651
	50.00	1293.1	1264.8	130.89	2.1800	1.672
	51.00	1301.0	1272.8	130.92	2.1569	1.693
	52.00	1308.6	1280.4	130.95	2.1346	1.713
	53.00	1316.0	1287.7	130.98	2.1132	1.732
	54.00	1322.9	1294.6	131.01	2.0926	1.750
	55.00	1329.6	1301.3	131.04	2.0727	1.768
	56.00	1336.1	1307.8	131.08	2.0536	1.785
	57.00	1342.2	1313.9	131.10	2.0351	1.802
***** End Shut-in 2	58.00	1348.1	1319.8	131.14	2.0172	1.817
***** Final Hydro.	298.00	2526.4	0.0	131.70		

\*\*\* TOOL DIAGRAM \*\*\* CONV.

WELL NAME: Simpson A #1-4

LOCATION : 4-31S-33W, Seward Cty KS

TICKET No. 8992 D.S.T. No. 6 DATE 7/11/96

TOTAL TOOL TO BOTTOM OF TOP PACKERS ..... 27

INTERVAL TOOL .....

BOTTOM PACKERS AND ANCHOR ..... 23

TOTAL TOOL ..... 50

DRILL COLLAR ANCHOR IN INTERVAL .....

D.C. ANCHOR STND.Stands Single Total

D.P. ANCHOR STND.Stands Single Total

TOTAL ASSEMBLY ..... 50

D.C. ABOVE TOOLS.Stands3 Single Total 272

D.P. ABOVE TOOLS.Stands56 Single Total 5287

TOTAL DRILL COLLARS DRILL PIPE & TOOLS .. 5609

TOTAL DEPTH ..... 5597

TOTAL DRILL PIPE ABOVE K.B. .... 12

REMARKS:

P.O. SUB	
C.O. SUB	5547
S.I. TOOL	5553
HMV Hyd. Tool	5558
JARS	5563
SAFETY JOINT	5565
PACKER	5569
PACKER	5574
DEPTH 5574	
STUBB Perf 3 ft.	5577
ANCHOR Pick up sub 5 ft.	5582
Alpine Recorder	5583
Perf 5 ft.	5587
Perf 5 ft.	5592
T.C. DEPTH	
AK-1 Recorder	5594
BULLNOSE Bull Plug 5 ft.	
T.D.	5597

TRILOBITE TESTING L.L.C.

OPERATOR : Dolomite Resources/McCoy  
 WELL NAME: Simpson A # 1-4  
 LOCATION : 4-31S-33W, Seward Cty KS  
 INTERVAL : 5283.00 To 5345.00 ft

DATE 7/13/96  
 KB 2930.00 ft TICKET NO: 8993 DST #7  
 GR 2917.00 ft FORMATION: Morrow  
 TD 5728.00 ft TEST TYPE: CONV/STRADDLE

RECORDER DATA

Mins	Field	1	2	3	4	TIME DATA-----
PF 30 Rec.	5495	5495	3024	11038		PF Fr. 0900 to 0930 hr
SI 60 Range(Psi )	4200.0	4200.0	4995.0	5075.0	0.0	IS Fr. 0930 to 1030 hr
SF 60 Clock(hrs)	12 hr	12 hr	Alpin	12 hr		SF Fr. 1030 to 1130 hr
FS 120 Depth(ft )	5337.0	5337.0	5325.0	5725.0	0.0	FS Fr. 1130 to 1330 hr

	Field	1	2	3	4	
A. Init Hydro	2866.0	2856.0	2842.0	3082.0	0.0	T STARTED 0600 hr
B. First Flow	156.0	130.0	127.0	0.0	0.0	T ON BOTM 0858 hr
B1. Final Flow	255.0	258.0	280.0	0.0	0.0	T OPEN 0900 hr
C. In Shut-in	1172.0	1166.0	1185.0	0.0	0.0	T PULLED 1330 hr
D. Init Flow	364.0	256.0	305.0	0.0	0.0	T OUT 1730 hr
E. Final Flow	482.0	472.0	465.0	0.0	0.0	
F. Fl Shut-in	1108.0	1113.0	1125.0	0.0	0.0	TOOL DATA-----
G. Final Hydro	2772.0	2660.0	2680.0	2928.0	0.0	Tool Wt. 3000.00 lbs
Inside/Outside	O	O	I	O		Wt Set On Packer 25000.00 lbs
						Wt Pulled Loose 125000.00 lbs
						Initial Str Wt 110000.00 lbs
						Unseated Str Wt 115000.00 lbs
						Bot Choke 0.75 in
						Hole Size 7.88 in
						D Col. ID 2.25 in
						D. Pipe ID 3.80 in
						D.C. Length 272.00 ft
						D.P. Length 5005.00 ft

RECOVERY

Tot Fluid 1400.00 ft of 272.00 ft in DC and 1128.00 ft in DP  
 1250.00 ft of Clean gassy oil - 30% gas, 70% oil  
 150.00 ft of Gassy mud cut oil - 25% gas, 45% oil, 30% mud

SALINITY 0.00 P.P.M. A.P.I. Gravity 27.00

BLOW DESCRIPTION

Initial Flow -  
 Strong blow, bottom of bucket in 2 min, Gas to surface in 26 min

Initial Shutin -  
 Weak blow, bottom of bucket in 25 min

Final Flow -  
 Fair blow, bottom of bucket in 4 min

Final Shutin -  
 Weak blow, built to 2"

SAMPLES: Yes  
 SENT TO: Caraway

Test Successful: Y

MUD DATA-----

Mud Type	Chemical
Weight	9.10 lb/cf
Vis.	52.00 S/L
W.L.	10.00 in3
F.C.	0.00 in
Mud Drop Y	30.0 ft
Amt. of fill	0.00 ft
Btm. H. Temp.	128.00 F
Hole Condition	Good
% Porosity	0.00
Packer Size	6.75 in
No. of Packers	3
Cushion Amt.	0.00
Cushion Type	
Reversed Out N	
Tool Chased N	
Tester	TOM HORACEK
Co. Rep.	DAVE GOLDAK
Contr.	Sweetman Drlg.
Rig #	1
Unit #	
Pump T.	

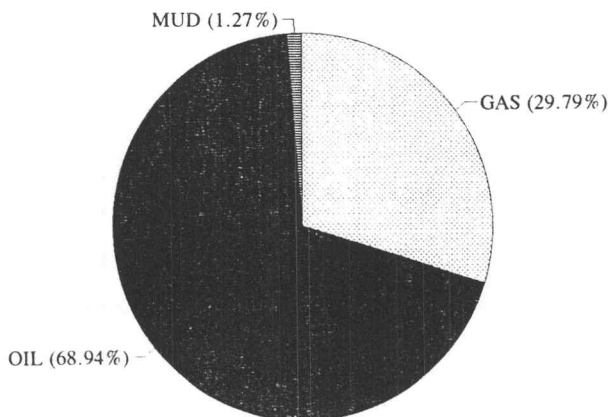
CALCULATED RECOVERY ANALYSIS

DST 7

TICKE 8993

SAMPLE #	TOTAL FEET	GAS		OIL		WATER		MUD	
		%	FEET	%	FEET	%	FEET	%	FEET
DRILL	1	1128	30	338.4	70	789.6		0	0
PIPE	2			0		0		0	0
	3			0		0		0	0
	4			0		0		0	0
	5			0		0		0	0
	6			0		0		0	0
WEIGHT	1			0		0		0	0
PIPE	2			0		0		0	0
	3			0		0		0	0
	4			0		0		0	0
DRILL	1	122	30	36.6	70	85.4		0	0
COLLAR	2	150	25	37.5	45	67.5		30	45
	3			0		0		0	0
	4			0		0		0	0
	5			0		0		0	0
TOTAL		1400		412.5		942.5		0	45

		HRS OPEN	BBL/DAY
BBL OIL =	11.9758	* 1.5	= 191.613
BBL WATER	0	* =	0
BBL MUD =	0.22005		
BBL GAS =	5.1744		





# TEST HISTORY

8993 DST #7 Simpson'A' #1-4 Dolomite Res. & McCoy Pet.

## Flag Points

t (Min.) P (PSig)

A:	0.00	2842.53
B:	0.00	127.72
C:	31.00	280.63
D:	58.00	1185.94
E:	0.00	305.20
F:	57.00	465.40
G:	123.00	1125.29
Q:	0.00	2680.35

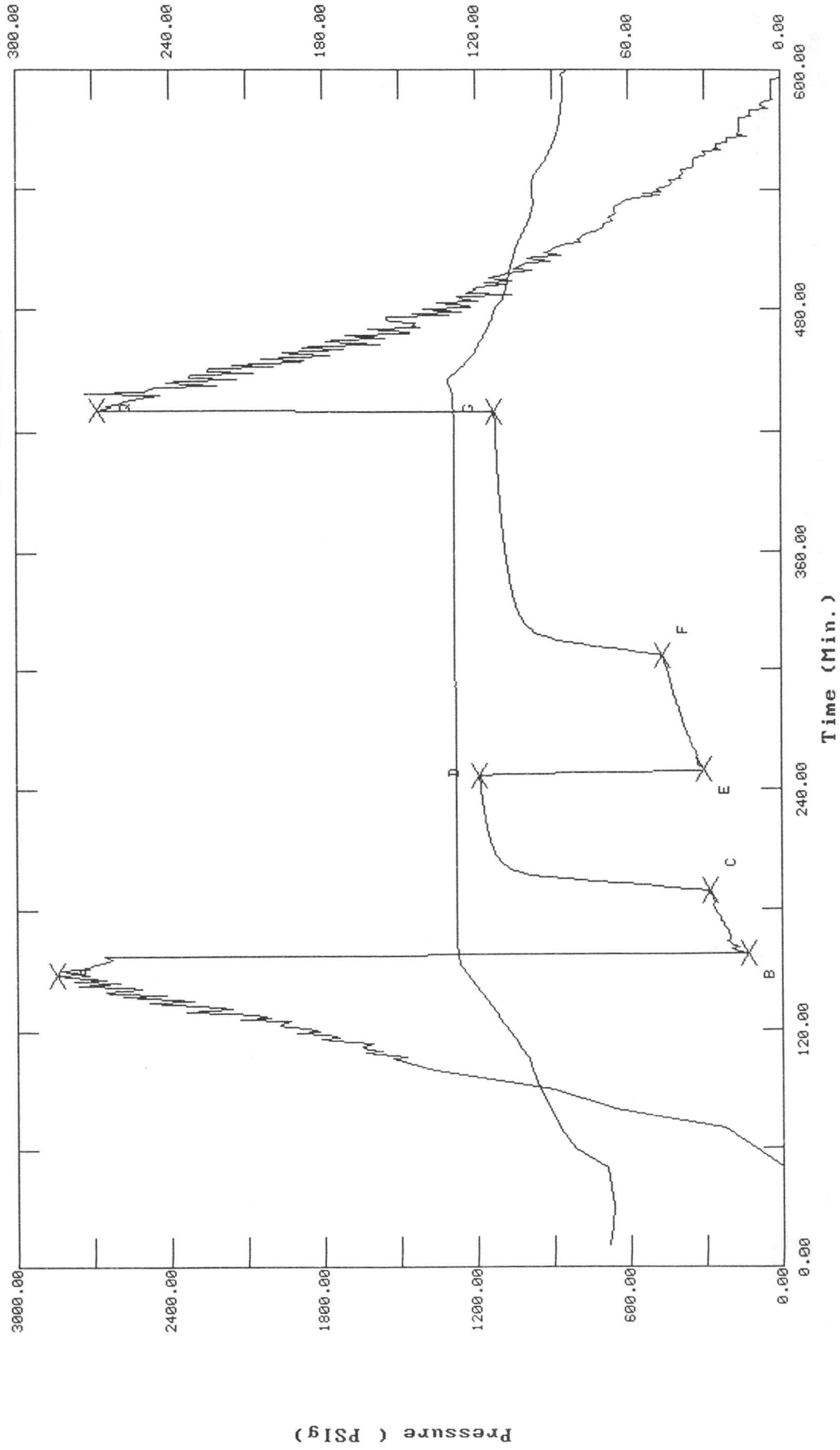
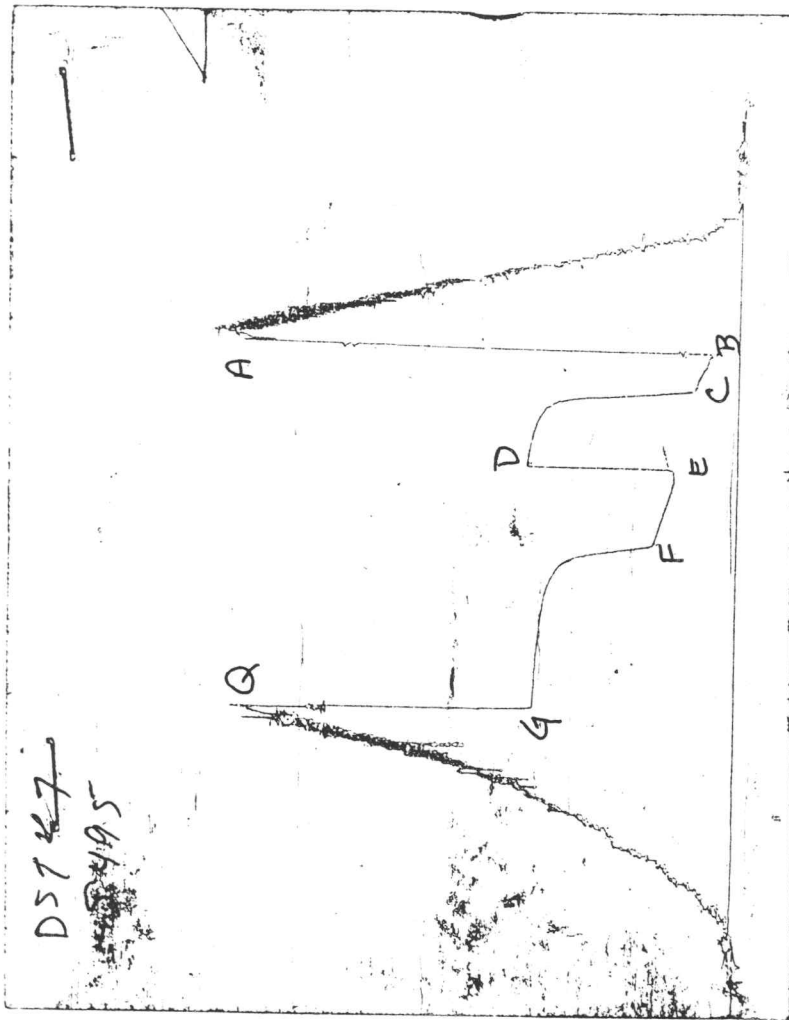
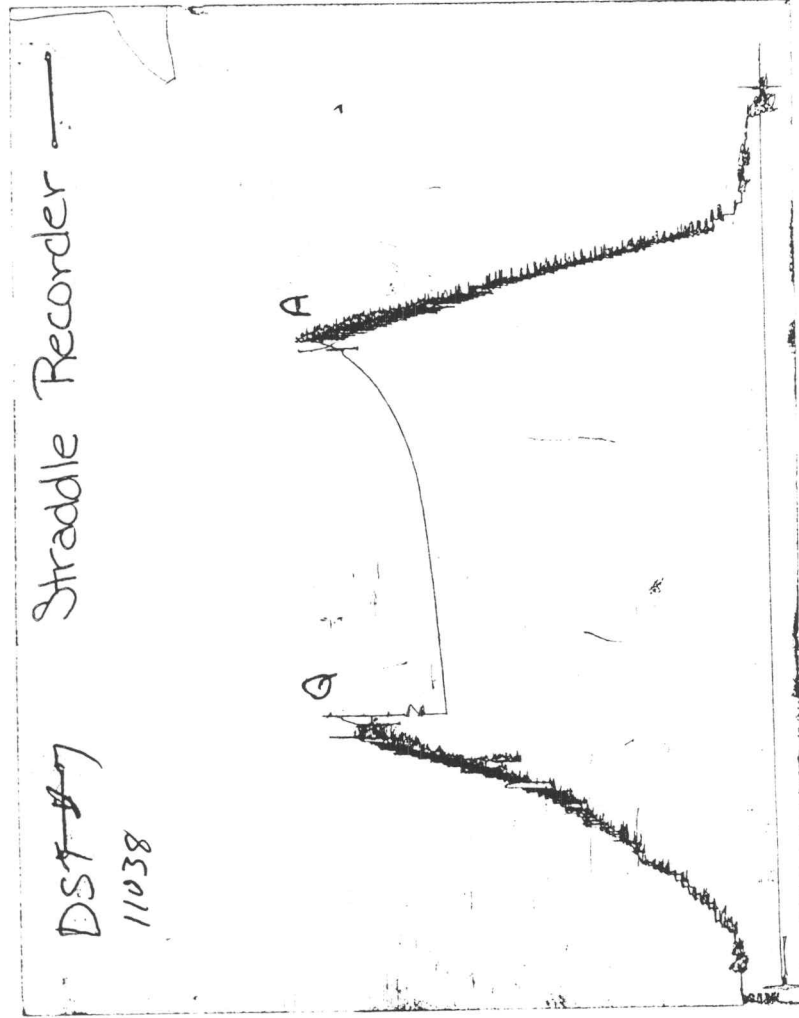


CHART PAGE



This is a photocopy of the actual AK-1 recorder chart

CHART PAGE



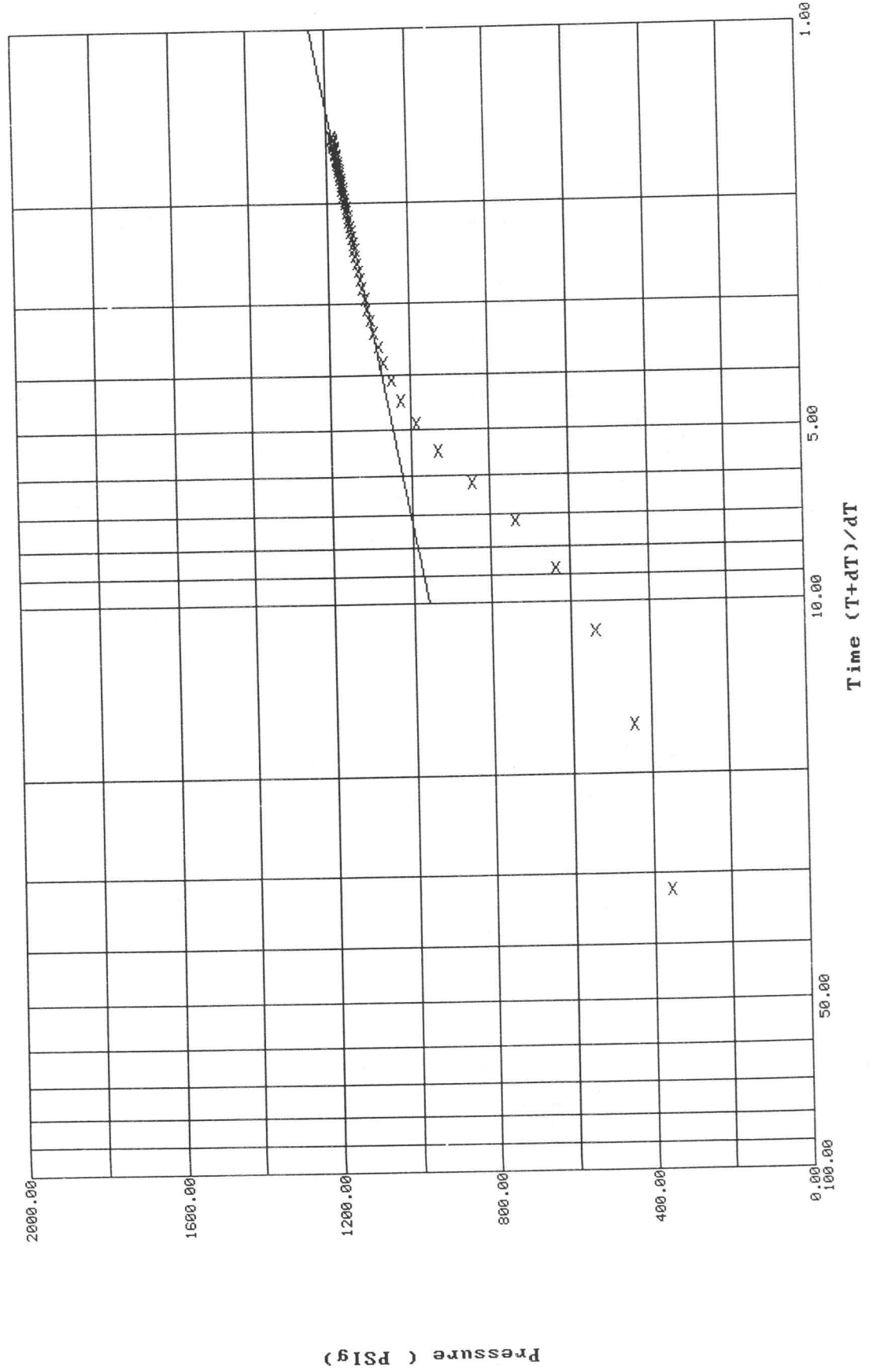
This is a photocopy of the actual AK-1 recorder chart

# Horner Plot: shut-in #1

8993 DST #7 Simpson "A" #1-4 Dolomite Res. & McCoy Pet.

Slope: 278.4963 PSig/cycle

Ext. Pressure: 1237.6157 PSig

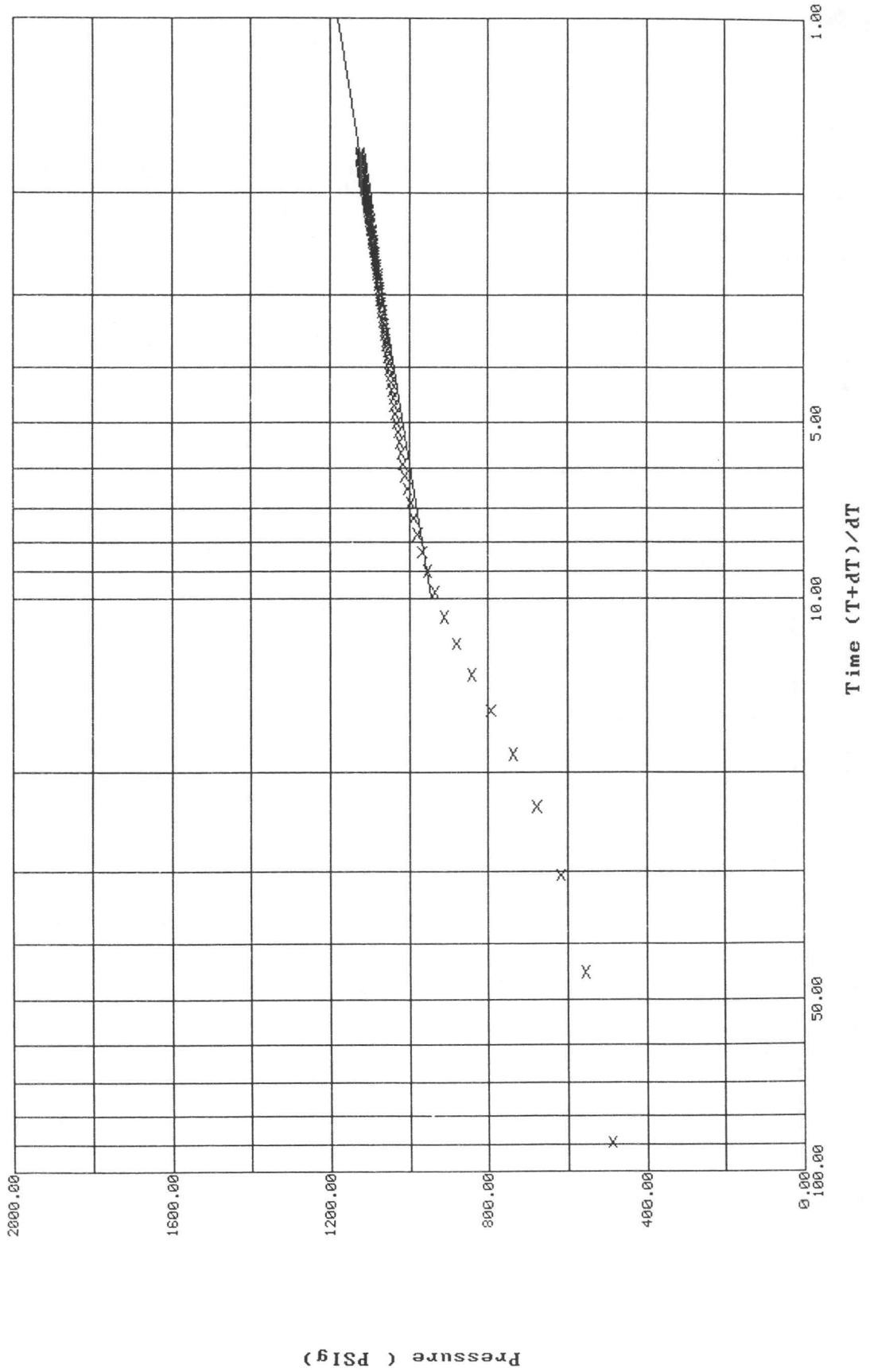


# Horner Plot: shut-in #2

8993 DST #7 Simpson "A" #1-4 Dolomite Res. & McCoy Pet.

Slope: 234.7536 PSig/cycle

Ext. Pressure: 1180.3153 PSig

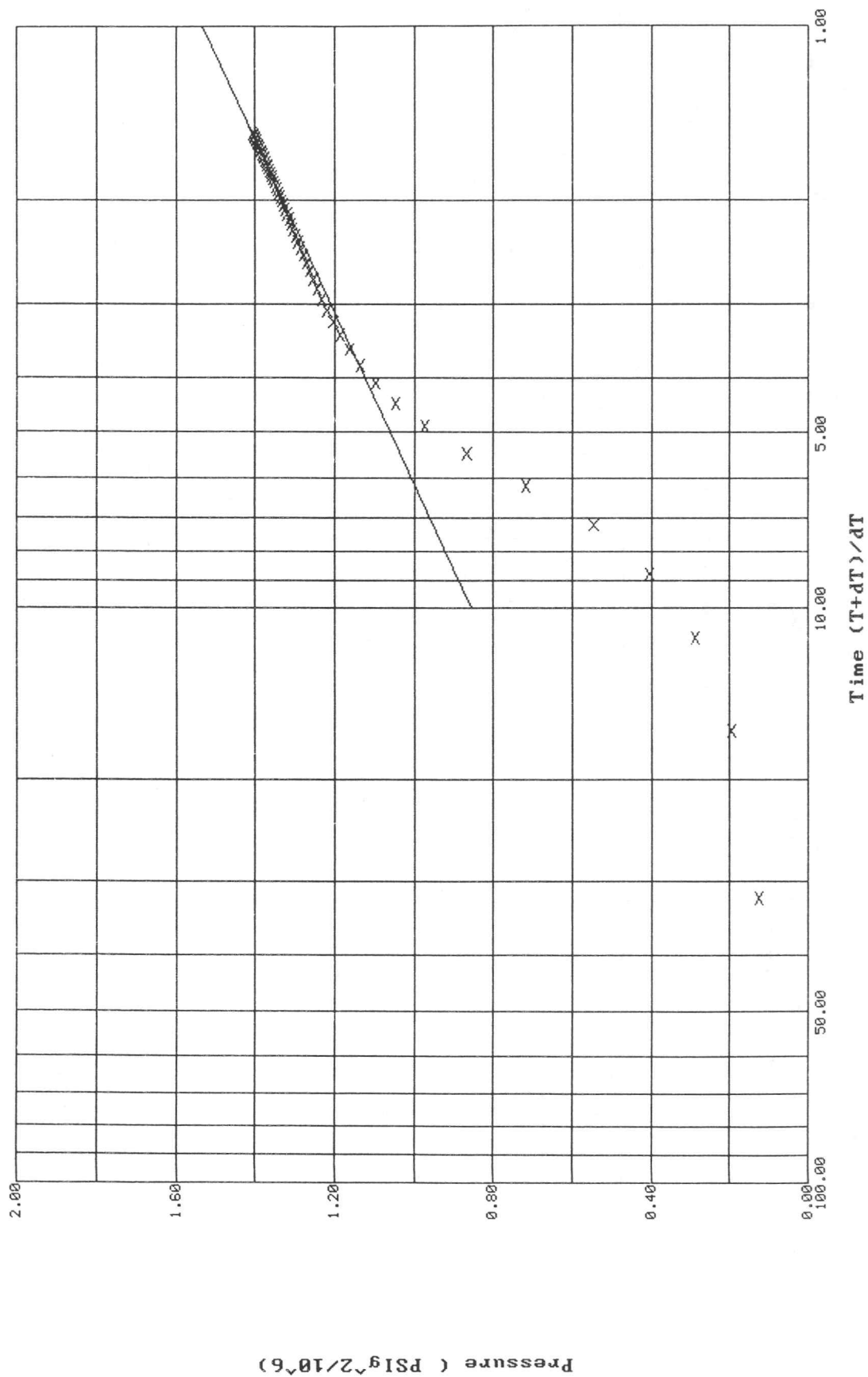


# P<sup>2</sup> Horner Plot: shut-in #1

8993 DST #7 Simpson "A" #1-4 Dolomite Res. & McCoy Pet.

Slope: 0.6759  $\text{PSIg}^2/10^6/\text{cycle}$

Ext. Pressure: 1237.7872  $\text{PSIg}$

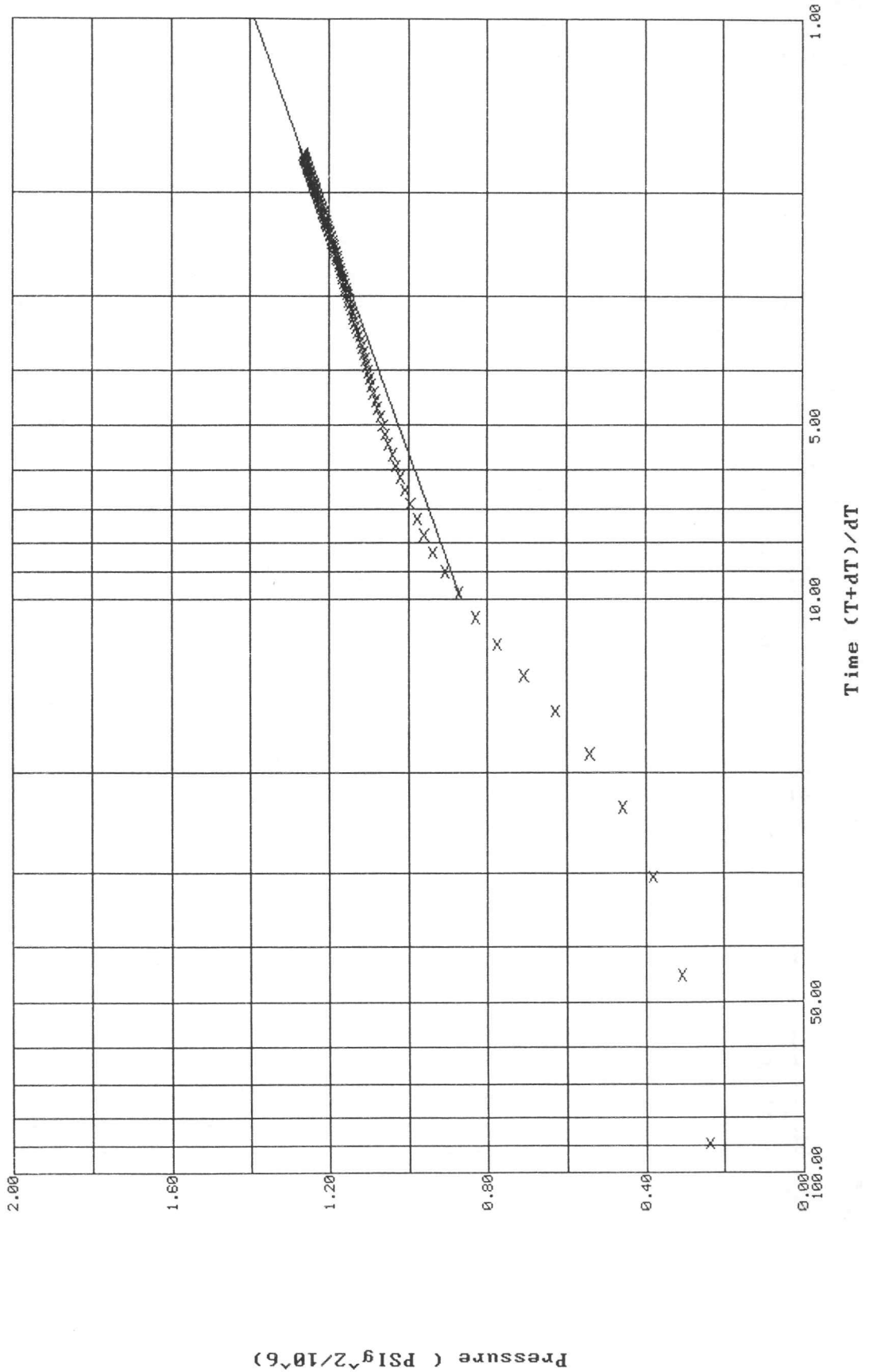


# P<sup>2</sup> Horner Plot: shut-in #2

8993 DST #7 Simpson 'A' #1-4 Dolomite Res. & McCoy Pet.

Slope: 0.5226  $\text{PSig}^2/10^6/\text{cycle}$

Ext. Pressure: 1178.4484 PSig



\*\*\* TOOL DIAGRAM \*\*\* CONV/STRADDLE

WELL NAME: Simpson A # 1-4

LOCATION : 4-31S-33W, Seward Cty KS

TICKET No. 8993 D.S.T. No. 7 DATE 7/13/96

TOTAL TOOL TO BOTTOM OF TOP PACKERS ..... 33

INTERVAL TOOL ..... 30

BOTTOM PACKERS AND ANCHOR ..... 383

TOTAL TOOL ..... 446

DRILL COLLAR ANCHOR IN INTERVAL .....

D.C. ANCHOR STND.Stands Single Total

D.P. ANCHOR STND.Stands Single 1 Total 32

TOTAL ASSEMBLY ..... 478

D.C. ABOVE TOOLS.Stands3 Single Total 272

D.P. ABOVE TOOLS.Stands53 Single Total 5005

TOTAL DRILL COLLARS DRILL PIPE & TOOLS .. 5755

TOTAL DEPTH ..... 5728

TOTAL DRILL PIPE ABOVE K.B. .... 27

REMARKS:

H	P.O. SUB	
H	C.O. SUB	5250
H	S.I. TOOL	5256
H		
H	HMV Hyd. Tool	5261
H	JARS	5266
H		
H	SAFETY JOINT	5268
H	PACKER	5275
H	PACKER	5283
H	DEPTH 5283	
H	STUBB Perf 4 ft.	5287
H	ANCHOR 1 jt. D.P. 32 ft.	5319
H	Pick up sub 5 ft.	5324
H	Alpine Recorder	5325
H	Perf 5 ft.	5329
H	Perf 5 ft.	5334
H	AK-1 Recorder	5337
H	Perf 6 ft.	5340
H	Blank Off Sub 1 ft	5341
H	T.C.	
H	DEPTH	
H	PACKER 4 ft.	5345
H		
H	Perf 1 ft.	5346
H		
H	4 stds. drill pipe	5724
H		
H	AK-1 recorder	5725
H	BULLNOSE Bull Plug 4 ft.	
H	T.D.	5728