

PETROLEUM WELL LOGGING, Inc.
OKLAHOMA CITY, OKLAHOMA



DEPTH LOGGED FROM 2100' TO
DATE LOGGED FROM 1-28-86 TO

ELEVATION
NR-NEW BIT
DCB-SIANDARD CODE BIT
NR-NO RETURNS
CO-CIRCULATED OUT
DST-ORIE. STEAM TEST



CHROMATOGRAPH ANALYSIS
METHANE - 1 BUTANES - 4
ETHANE - 2 PENTANES - 5
PROPANE - 3 HELIUM - 6
RESULTS IN MOLE PER CENT GAS/IN

DRILLING RATE

DEPTH & LITHOLOGY
LEACHED UNITS
% OIL FLUOR

GAS FROM MUD

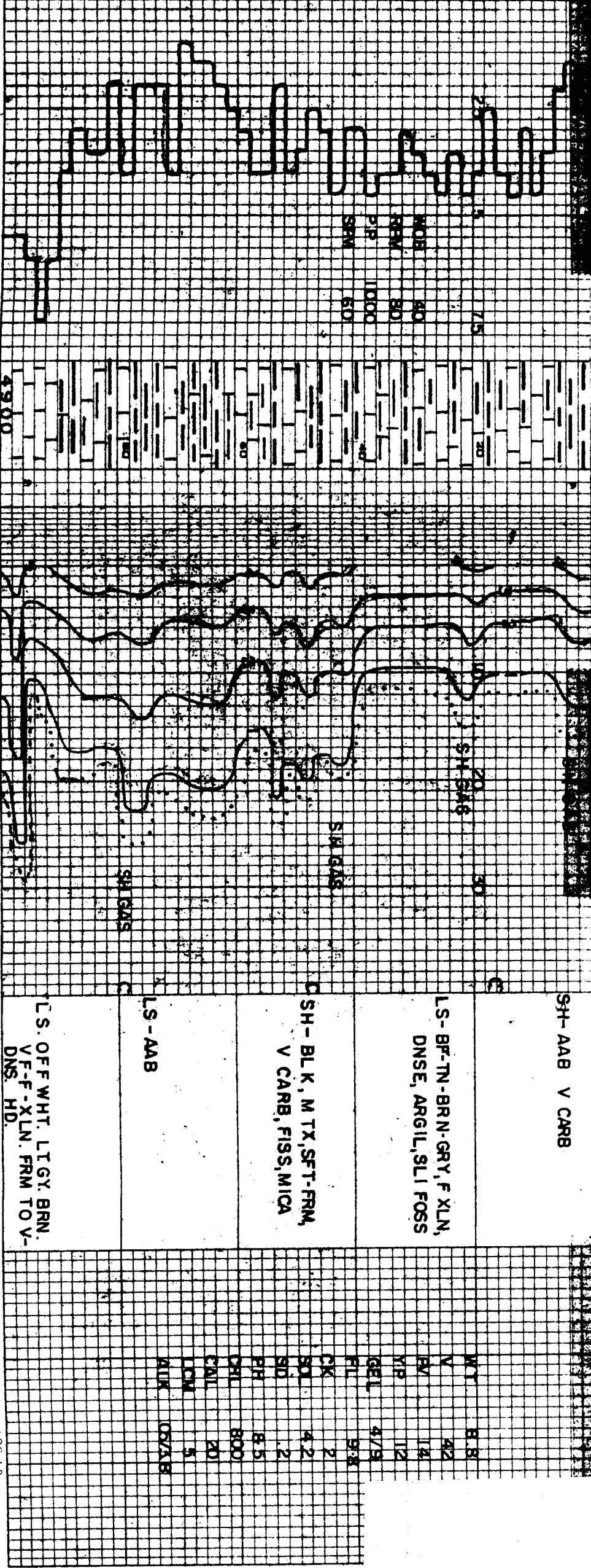
TOTAL GAS FROM HOT WIRE DETECTOR

REMARKS

MUD REPORT

COMPANY J.M. HUBER CORP
WELL BRIGGEMAN 25-1
FIELD
COUNTY MORTON STATE KANSAS
LOCATION SEC 25-31S-41W
SUPERVISING ENGINEER/DAVIS-SWILSON UNIT NO.41

LEGEND
XXXXX CONGLOMERATE
BANDY SHALE
+++++ GRANITE
AAAAA GRANITE WASH
..... SAND
VVVV ANHYDRITE
OOLMITE
SHALE



PETROLEUM WELL LOGGING, Inc.
OKLAHOMA CITY, OKLAHOMA



DEPTH LOGGED FROM 2100' TO
DATE LOGGED FROM 1-28-86 TO

ELEVATION NR-NO RETURNS
NR-NEW BIT CO-CIRCULATED OUT
DCB-DIAMOND CORE BIT DST-DRILL STEM TEST

GAS CHROMATOGRAPH ANALYSIS
METHANE - 1 BUTANES - 4
ETHANE - 2 PENTANES - 5
PROPANE - 3 HELIUM - 6
RESULTS IN MOLE PER CENT GAS/IN

DRILLING RATE
 MINUTE STAMP

DEPTH & LITHOLOGY
LEACHED UNITS
% OIL FLUOR.

TOTAL GAS FROM HOT WIRE DETECTOR

LEGEND
X X X X X CONGLOMERATE
BANDY SHALE
+ + + + GRANITE
A A A A GRANITE WASH
SAND
LIMESTONE
DOLomite
SHALE
CHERT
ANHYDRITE
COAL

COMPANY J.M. HUBER CORP.
WELL BRIGGEMAN 25-1
FIELD
COUNTY MORTON STATE KANSAS
LOCATION SEC 25-31S-41W
SUPERVISING ENGINEER/DAVIS SWILSON UNIT NO 41

REMARKS

MUD REPORT

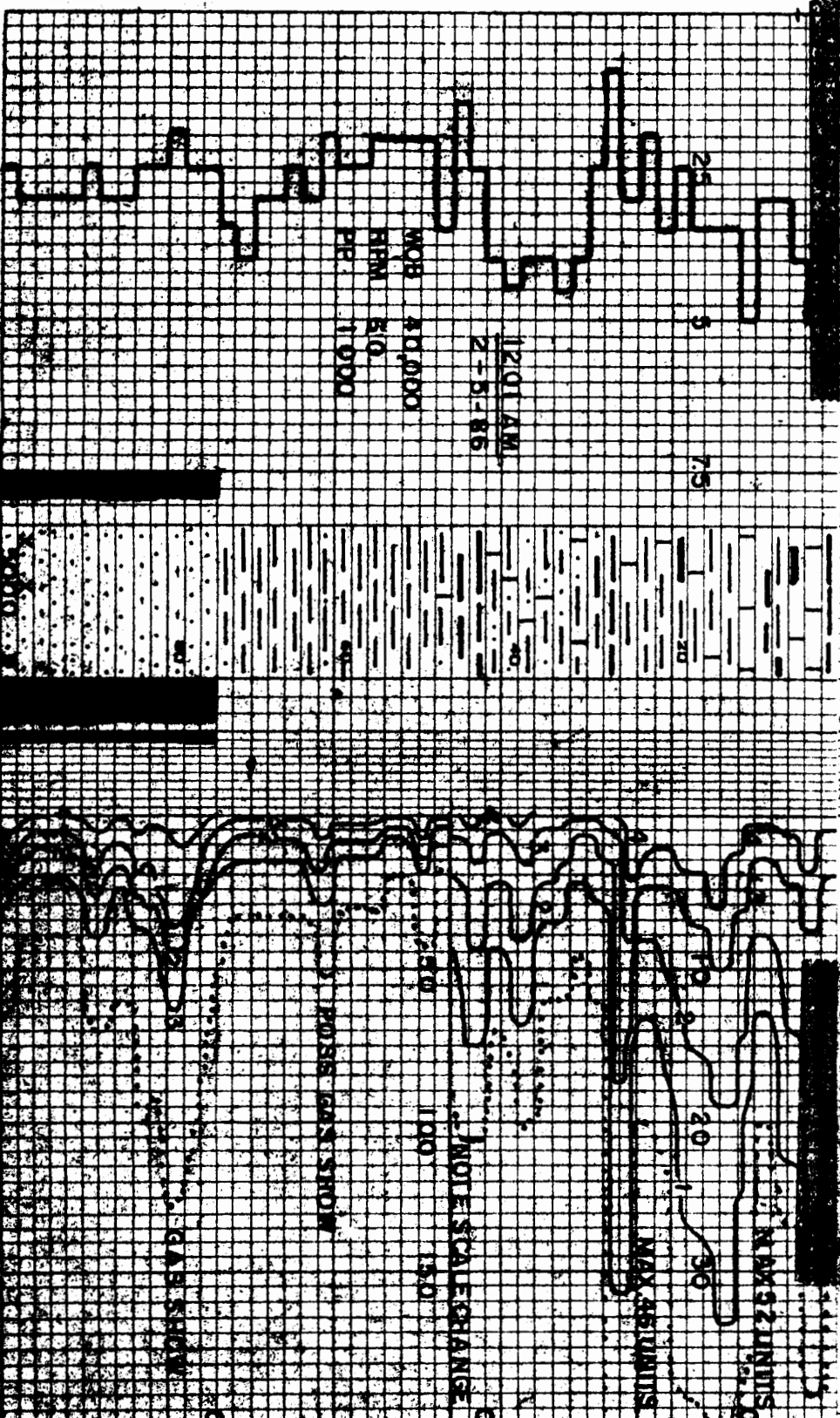
SH. BLK. BLKY. TO SPNTY
FISS. FRM TO V-SFT
CARB.

LS. OFF WHT. TN. BRN. GY.
VF-F-XLN SDY L.P.
W/SOM F-GN HD TT
SS

SH. AS ABOVE

SH. BLK. SFT BLKY CARB

SS. CLR. OPA. OFF WHT. F -
LRG. MED. PERD. UNCONS.
SUB. ANG. SUB RND. NON
CALC. FAIR SORT. W/
FAIR. INTRGN. PORO
YELL. GRN. FLOR. GOOD
STNG. CUT
SS. AS ABOVE BEING MED.
ORG. ON STNG. ODOR.



PETROLEUM WELL LOGGING, Inc.
OKLAHOMA CITY, OKLAHOMA



DEPTH LOGGED FROM 2100' TO
DATE LOGGED FROM 1228-86 TO

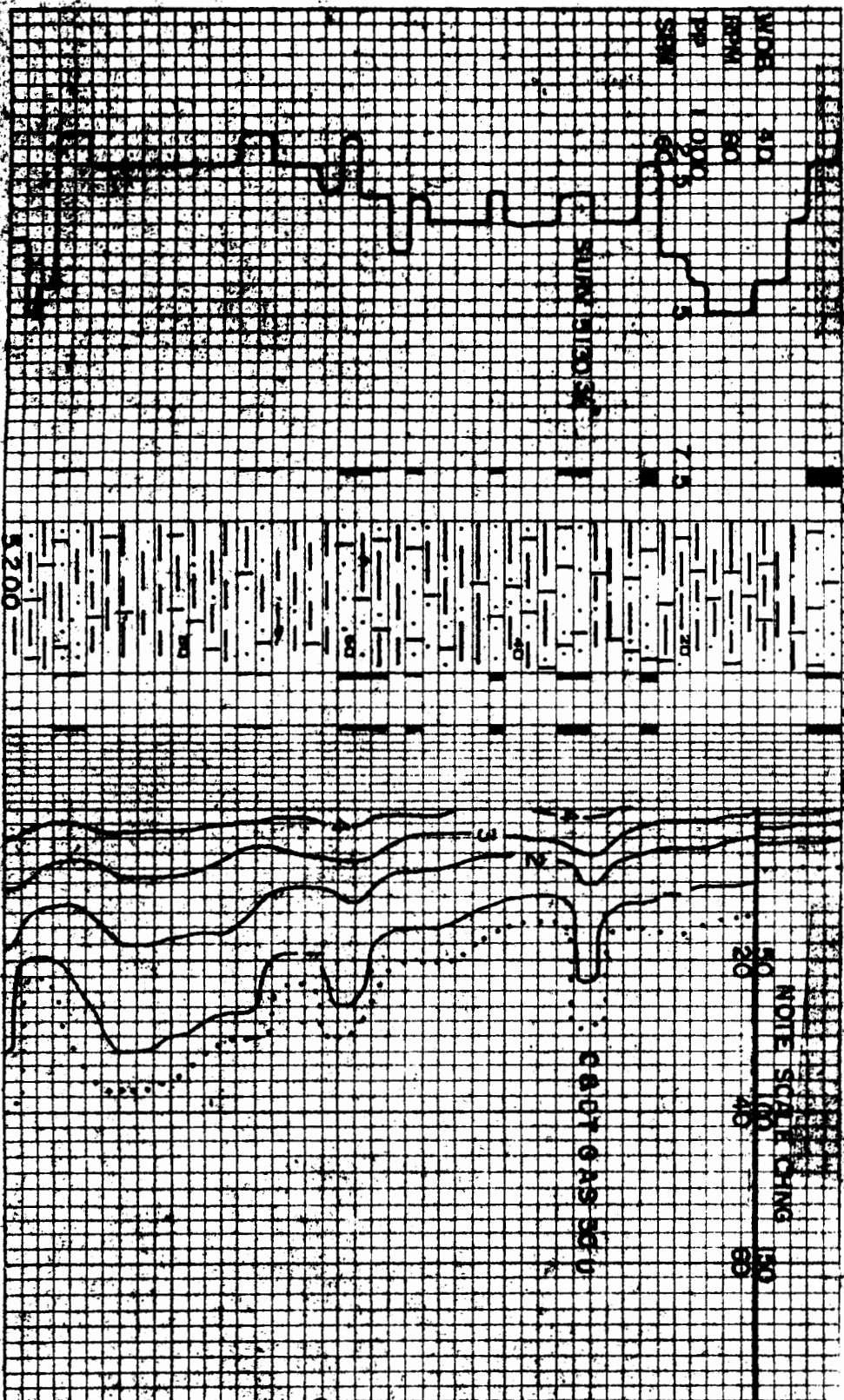
ELEVATION NR-NO RETURNS
NR-NEW BIT CO-CIRCULATED BIT
DCS-DIAMOND CORAL BIT DST-SMALL STEM TEST

GAS CHROMATOGRAPH ANALYSIS
METHANE - 1 BUTANES - 4
ETHANE - 2 PENTANES - 5
PROPANE - 3 HELIUM - 8
RESULTS IN MOLE PER CENT GAS/AIR

DRILLING RATE
MINUT PER MIN

POROSITY
DEPTH & LITHOLOGY
LEACHED UNITS
% OIL FLUOR

GAS FROM MUD
TOTAL GAS FROM HOT WIRE DETECTOR



WELL BRIGGEMAN 25-1

FIELD

COUNTY MORTON STATE KANSAS

LOCATION SEC 25-31S-41W

SUPERVISING ENGINEER DAVIS SWILSON UNIT NO. 41

- LEGEND
- XXXXX CONGLOMERATE
 - SAND
 - BANDY SHALE
 - LIMESTONE
 - +++ GRANITE
 - XXX GRANITE WASH
 - /// DOLOMITE
 - SHALE
 - AAAA CHERT
 - VVVV ANHYDRITE
 - COAL

REMARKS

LSS- CLR-TN, F-M-CSE GR,
SA-SR, QTZ IC P, YELL
FLOR, STRM CUT, TR
INTGR PORO, BRTYEL
FLOR, CALC
SH-AAB

SS-AAB W/ FAIR STRM
CUTSCAT INTGR
PORO

LS-TN-GRN, F-M XLN,
AR OIL, DNSE FOSS
IP W/ SH-AAB

LITH-AAB

MUD REPORT

W	4.2
V	1.9
PV	1.2
YP	4.2
GEL	9.8
FL	2
CK	2
SOIL	2
SD	2
MILK	2
CHL	20
CAIL	5
LOA	3-5
BM	3-5

NOTE: GAMES AS SHOWN IN THIS
READING NOT ON LOG