

34-31-5W

STATE KANSAS		BULLSEYE PETROLEUM &	
COUNTY Harper		COMPANY ASH OIL & GAS	WELL NO. 2
BLOCK 110' NW of NW SE SW		FARM Nordus-Drouhard	
SEC. 34	TOTAL DEPTH 4670		
T. 31S	R. 5W		
CONTRACTOR Ace Drill-N #1			
COMMENCED Jan 12, 2006			
COMPLETED Jan 29, 2006			
REMARKS Radiation Guard El Log			
ALTITUDE 1310 RB			
PRODUCTION Simpson			

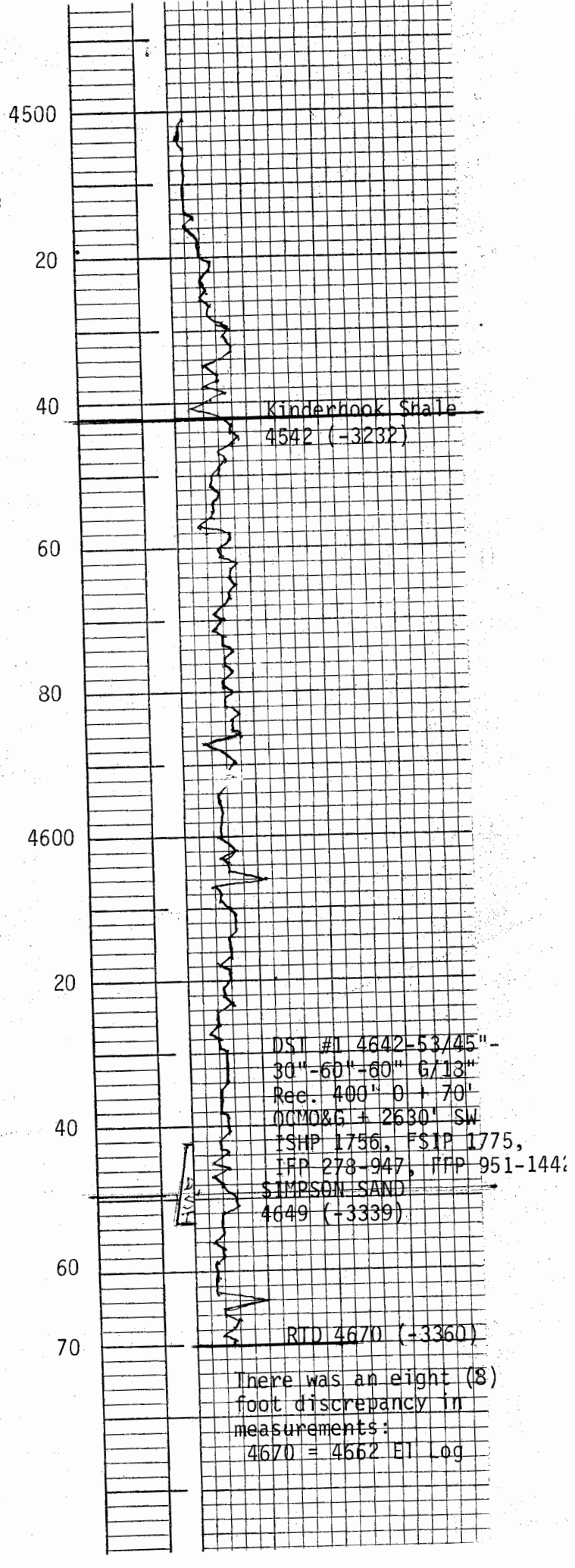
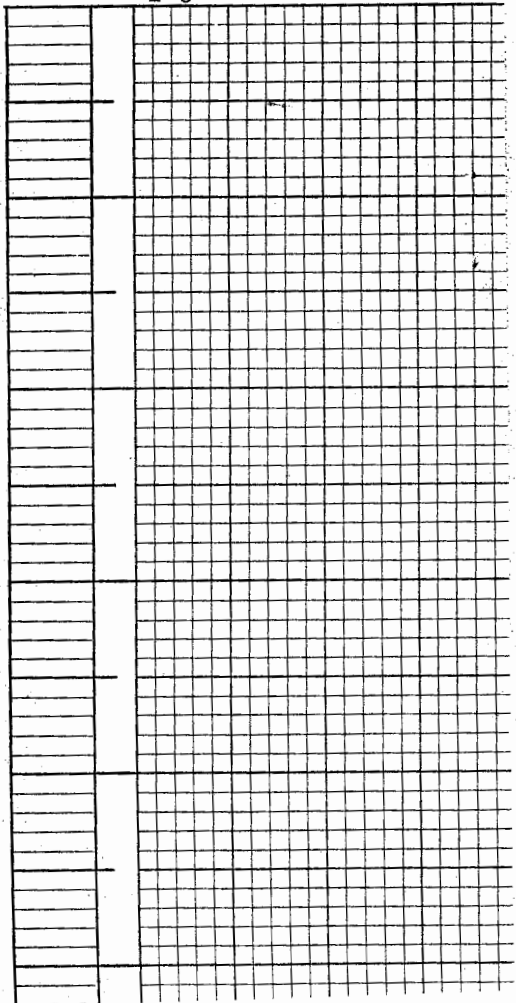
CASING RECORD

10'	
8 1/4"	206'
20'	6 3/8"
15 1/2"	5 3/8"
12 1/2"	4669 w/100sxs
SHOT	QUARTS BETWEEN

TIME RATE SCALE: 1/10" = MINUTES

FORM 450 - In stock and for sale by Ross-Martin Co., Tulsa

2 6 TIME RATE: 1/10" SQUARES



DST #1 4642-53/45"-
 30"-60"-60" 6/13"
 Rec. 400' 0 + 70'
 NCMO&G + 2630' SW
 ISHP 1756, FSIP 1775,
 IFP 278-947, PFP 951-144;
 SIMPSON SAND
 4649 (-3339)

RTD 4670 (+3360)

There was an eight (8)
 foot discrepancy in
 measurements:
 4670 = 4662 El Log



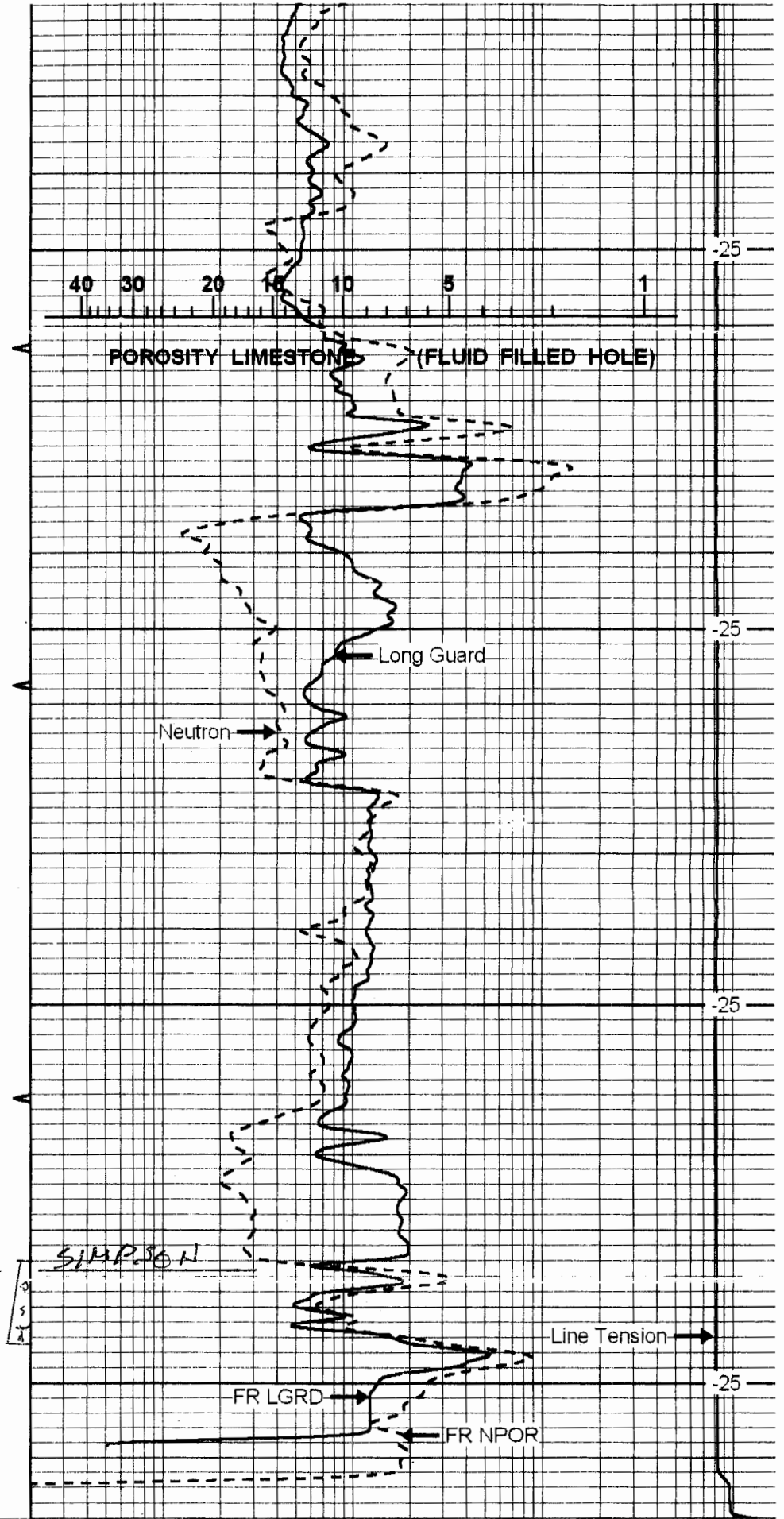
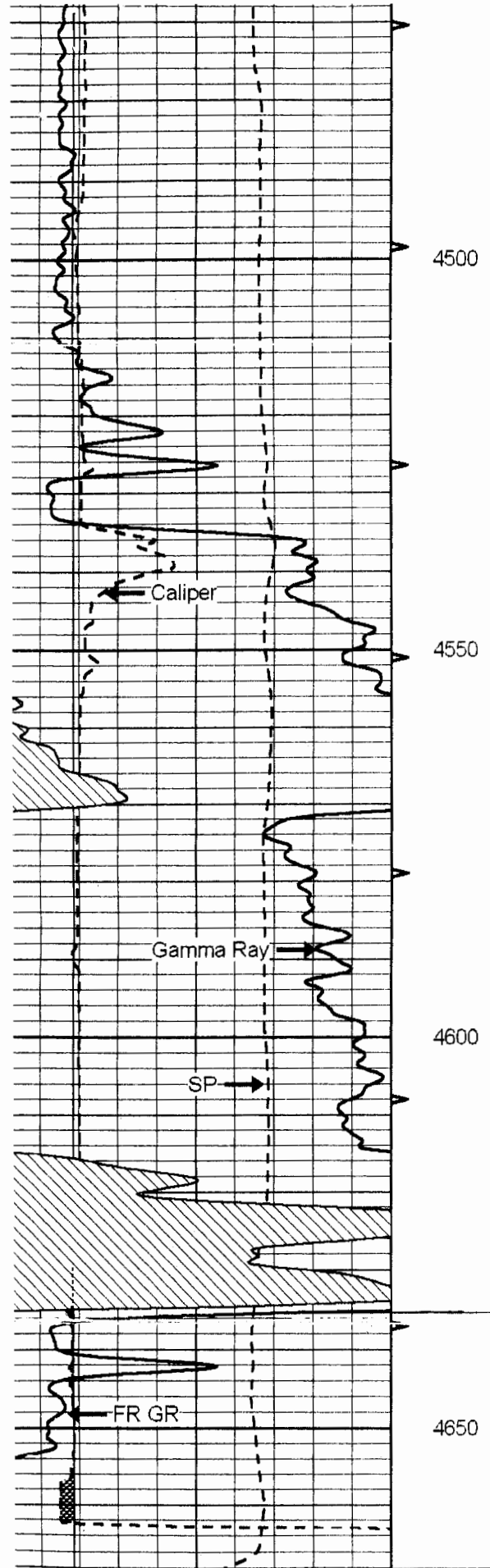
Radiation Guard Log

DIGITAL LOG

(785) 625-3858

15-077-21544	API No.	Company Bullseye Petroleum & Ash Oil & Gas	
		Well Nordhus-Drouhard #2	
		Field Spring Creek	
		County Harper	State Kansas
	Location	110' NW of NW SE SW/4	Other Services
	Sec: 34	Twp: 31S	Rge: 5W
Permanent Datum		Ground Level	Elevation 1307
Log Measured From		Kelly Bushing	3 Ft. Above Perm. Datum
Drilling Measured From		Kelly Bushing	K.B. 1310 D.F. G.L. 1307
Date	1/28/2006		
Run Number	One		
Depth Driller	4670		
Depth Logger	4662		
Bottom Logged Interval	4661		
Top Log Interval	Surface csg.		
Casing Driller	8.625 @ 203		
Casing Logger	206		
Bit Size	7.875		
Type Fluid in Hole	Chemical		
Salinity, ppm CL	30,000		
Density / Viscosity	8.9	47	
pH / Fluid Loss	8.5	28.6	
Source of Sample	Flowline		
Rm @ Meas. Temp	2.6 @ 68		
Rmf @ Meas. Temp	1.95 @ 68		
Rmc @ Meas. Temp	3.5 @ 68		
Source of Rmf / Rmc	Charts		
Rm @ BHT	1.4 @ 125		
Operating Rig Time	2.5 Hours		
Max Rec. Temp. F	125		
Equipment Number	10		
Location	Hays		
Recorded By	C McLaughlin		
Witnessed By	William Ash	Wiley Ash	

RECEIVED
KANSAS CORPORATION COMMISSION
MAY 12 2006
CONSERVATION DIVISION
WICHITA, KS



Gamma Ray (GAPI)	150
Caliper (in)	16
sp (mV)	100

0.2	LGRD (Ohm-m)	200
560	SWNC (NAPI)	216
15000	Line Tension (lb)	