

**TRILOBITE
TESTING, INC.**

DRILL STEM TEST REPORT

Prepared For: **luka Carmin Development, LLC**

PO Box 907
Pratt KS 67124

ATTN: Dave Williams

25 32S 10W Barber KS

Hendricks #2

Start Date: 2006.11.24 @ 03:36:44

End Date: 2006.11.24 @ 16:24:40

Job Ticket #: 25493 DST #: 1

Trilobite Testing, Inc

PO Box 362 Hays, KS 67601

ph: 785-625-4778 fax: 785-625-5620

luka Carmin Development, LLC

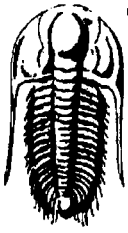
Hendricks #2

25 32S 10W Barber KS

DST # 1

Mississippi

2006.11.24



**TRILOBITE
TESTING, INC**

DRILL STEM TEST REPORT

Iuka Carmin Development, LLC

Hendricks #2

PO Box 907
Pratt KS 67124

25 32S 10W Barber KS

ATTN: Dave Williams

Job Ticket: 25493

DST#: 1

Test Start: 2006.11.24 @ 03:36:44

GENERAL INFORMATION:

Formation: **Mississippi**

Deviated: No Whipstock: ft (KB)

Time Tool Opened: 09:25:57

Time Test Ended: 16:24:40

Test Type: Conventional Bottom Hole

Tester: Zach Stover

Unit No: 23

Interval: **4336.00 ft (KB) To 4354.00 ft (KB) (TVD)**

Total Depth: 4354.00 ft (KB) (TVD)

Hole Diameter: 7.88 inches Hole Condition: Poor

Reference Elevations: 1433.00 ft (KB)

1425.00 ft (CF)

KB to GR/CF: 8.00 ft

Serial #: 6771 Inside

Press@RunDepth: 27.29 psig @ 4339.00 ft (KB)

Start Date: 2006.11.24

End Date: 2006.11.24

Start Time: 03:36:49

End Time: 16:24:40

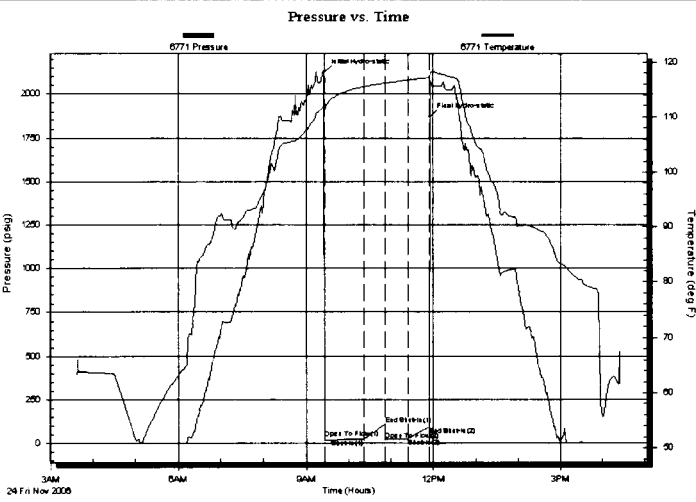
Capacity: 7000.00 psig

Last Calib.: 2006.11.24

Time On Btm: 2006.11.24 @ 09:25:42

Time Off Btm: 2006.11.24 @ 11:54:57

TEST COMMENT: IF Weak blow Built to 2 "
ISI No blow
FF Weak blow 1/4 " - 1/2 "
FSI No blow



PRESSURE SUMMARY

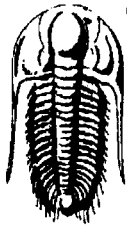
Time (Min.)	Pressure (psig)	Temp (deg F)	Annotation
0	2124.91	111.82	Initial Hydro-static
1	26.98	111.18	Open To Flow (1)
56	23.86	115.42	Shut-In(1)
86	107.98	116.06	End Shut-In(1)
87	20.43	116.04	Open To Flow(2)
118	27.29	116.66	Shut-In(2)
149	96.09	117.13	End Shut-In(2)
150	1871.51	117.84	Final Hydro-static

Recovery

Length (ft)	Description	Volume (bbl)
10.00	MUD	0.05

Gas Rates

	Choke (inches)	Pressure (psig)	Gas Rate (Mcf/d)



**TRILOBITE
TESTING, INC**

DRILL STEM TEST REPORT

TOOL DIAGRAM

Iuka Carmin Development, LLC

Hendricks #2

PO Box 907
Pratt KS 67124

25 32S 10W Barber KS

Job Ticket: 25493

DST#: 1

ATTN: Dave Williams

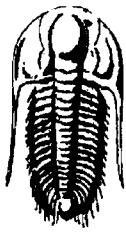
Test Start: 2006.11.24 @ 03:36:44

Tool Information

Drill Pipe:	Length: 4270.00 ft	Diameter: 3.80 inches	Volume: 59.90 bbl	Tool Weight: 2100.00 lb
Heavy Wt. Pipe:	Length: 0.00 ft	Diameter: inches	Volume: 0.00 bbl	Weight set on Packer: 20000.00 lb
Drill Collar:	Length: 60.00 ft	Diameter: 2.25 inches	Volume: 0.30 bbl	Weight to Pull Loose: 70000.00 lb
			<u>Total Volume: 60.20 bbl</u>	Tool Chased ft
Drill Pipe Above KB:	21.00 ft			String Weight: Initial 62000.00 lb
Depth to Top Packer:	4336.00 ft			Final 64000.00 lb
Depth to Bottom Packer:	ft			
Interval between Packers:	18.00 ft			
Tool Length:	45.00 ft			
Number of Packers:	2	Diameter: 6.75 inches		
Tool Comments:				

Tool Description	Length (ft)	Serial No.	Position	Depth (ft)	Accum. Lengths
Change Over Sub	1.00			4310.00	
Shut In Tool	5.00			4315.00	
Hydraulic tool	5.00			4320.00	
Jars	5.00			4325.00	
Safety Joint	2.00			4327.00	
Packer	4.00			4331.00	27.00 Bottom Of Top Packer
Packer	5.00			4336.00	
Stubb	1.00			4337.00	
Perforations	2.00			4339.00	
Recorder	0.00	6771	Inside	4339.00	
Perforations	10.00			4349.00	
Recorder	0.00	13789	Outside	4349.00	
Bullnose	5.00			4354.00	18.00 Bottom Packers & Anchor

Total Tool Length: 45.00



**TRILOBITE
TESTING, INC**

DRILL STEM TEST REPORT

FLUID SUMMARY

Iuka Carmin Development, LLC

Hendricks #2

PO Box 907
Pratt KS 67124

25 32S 10W Barber KS

Job Ticket: 25493

DST#: 1

ATTN: Dave Williams

Test Start: 2006.11.24 @ 03:36:44

Mud and Cushion Information

Mud Type: Gel Chem

Cushion Type:

Oil API:

deg API

Mud Weight: 9.00 lb/gal

Cushion Length:

ft

Water Salinity:

ppm

Viscosity: 43.00 sec/qt

Cushion Volume:

bbl

Water Loss: 12.38 in³

Gas Cushion Type:

Resistivity: ohm.m

Gas Cushion Pressure:

psig

Salinity: 7000.00 ppm

Filter Cake: 0.20 inches

Recovery Information

Recovery Table

Length ft	Description	Volume bbl
10.00	MUD	0.049

Total Length: 10.00 ft Total Volume: 0.049 bbl

Num Fluid Samples: 0

Num Gas Bombs: 0

Serial #:

Laboratory Name:

Laboratory Location:

Recovery Comments:

Serial #: 6771

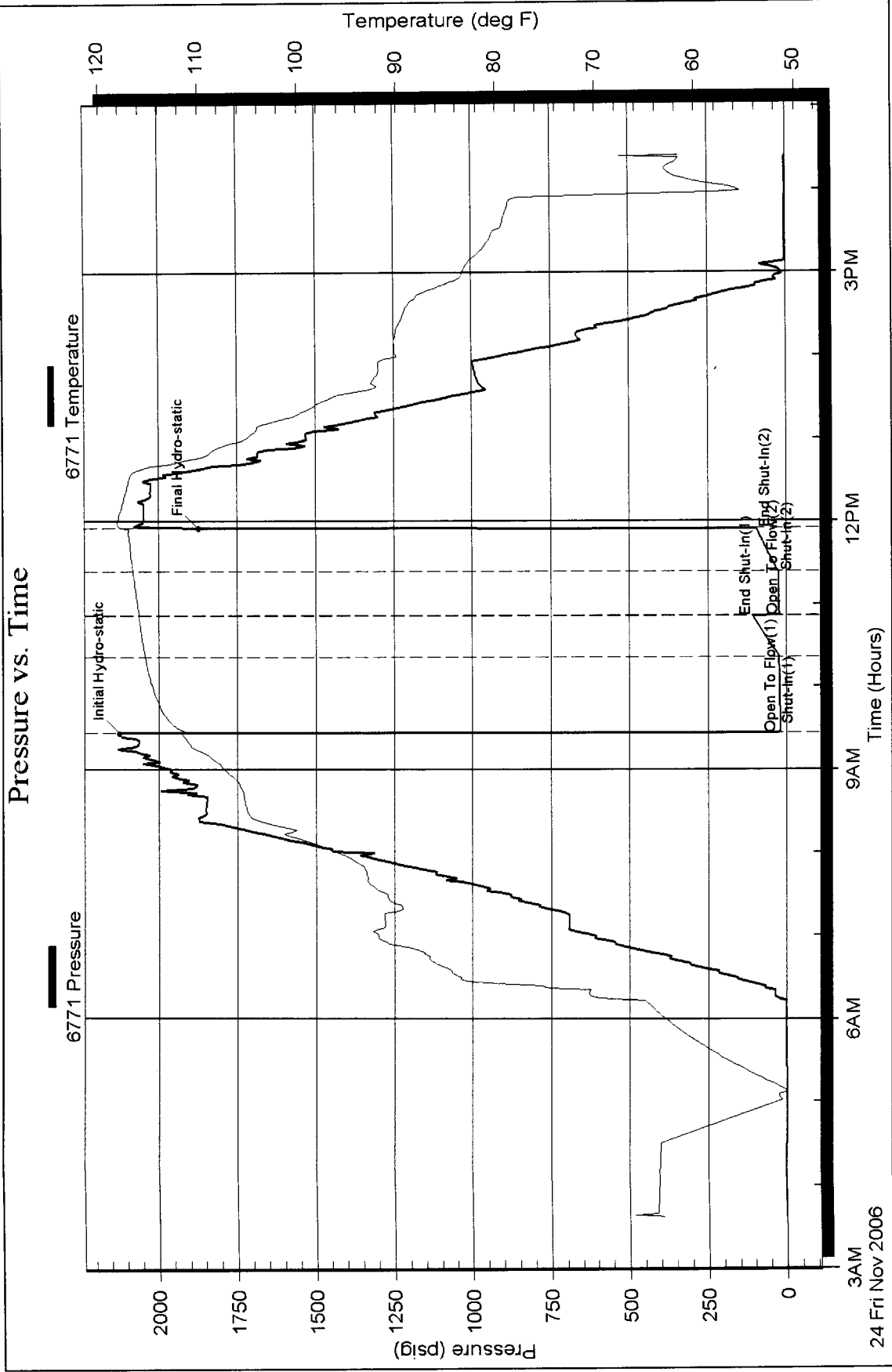
Inside

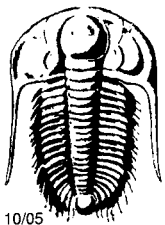
Iuka Carmin Development, LLC

25 32S 10W Barber KS

DST Test Number: 1

Pressure vs. Time





TRILOBITE TESTING INC.

P.O. Box 362 • Hays, Kansas 67601

9574 ✓

25493

Test Ticket

Well Name & No. Hendricks #2 Test No. 1 Date 11-24-06
 Company Luka Carni Development LLC Zone Tested Mississippi
 Address POB 907 Pratt Ks 67124 Elevation 1433 KB 1425 GL
 Co. Rep / Geo. Dave Williams Rig Terra Drilling #1
 Location: Sec. 25 Twp. 325 Rge. 10w Co. Barber State Ks
 Comment: _____ Release date / time: _____

Interval Tested 4336 - 4354 Initial Str Wt./Lbs. 62000 Unseated Str Wt./Lbs. 64000
 Anchor Length 18' Wt. Set Lbs. 20000 Wt. Pulled Loose/Lbs. 70000
 Top Packer Depth 4331 Tool Weight 2100
 Bottom Packer Depth 4336 Hole Size 7 7/8" Rubber Size 6 3/4"
 Total Depth 4354 Wt. Pipe Run - Drill Collar Run 60
 Mud Wt. 9.4 LCM - Vis. 43 WL 12.4 Drill Pipe Size 4 1/2" Ft. Run 4270

Blow Description IF: Weak blow. Built to 2 in.
ISI: No blow.
FF: Weak blow. 1/4 - 1/2"
FSI: No blow.

Recovery - Total Feet	GIP	Ft. in DC	Ft. in DP
<u>10</u>	<u>-</u>	<u>10</u>	<u>-</u>
Rec. <u>10</u> Feet of <u>mud</u>	%gas	%oil	%water
Rec. _____ Feet of _____	%gas	%oil	%water
Rec. _____ Feet of _____	%gas	%oil	%water
Rec. _____ Feet of _____	%gas	%oil	%water
Rec. _____ Feet of _____	%gas	%oil	%water
BHT <u>117</u> °F Gravity _____ °API D @ _____ °F Corrected Gravity _____ °API	RW _____ @ _____ °F Chlorides _____ ppm Recovery _____ Chlorides <u>7000</u> ppm System		

AK-1	Alpine	Recorder No.	Test
(A) Initial Hydrostatic Mud	<u>2125</u> PSI	<u>6771</u>	<input checked="" type="checkbox"/> <u>1200</u>
(B) First Initial Flow Pressure	<u>27</u> PSI	(depth) <u>4339</u>	Jars <input checked="" type="checkbox"/> <u>250</u>
(C) First Final Flow Pressure	<u>24</u> PSI	Recorder No. <u>13789</u>	Safety Jt. <input checked="" type="checkbox"/> <u>75</u>
(D) Initial Shut-In Pressure	<u>108</u> PSI	(depth) <u>4349</u>	Circ Sub _____
(E) Second Initial Flow Pressure	<u>20</u> PSI	Recorder No. <u>-</u>	Sampler _____
(F) Second Final Flow Pressure	<u>27</u> PSI	(depth) <u>-</u>	Straddle _____
(G) Final Shut-In Pressure	<u>96</u> PSI	Initial Opening <u>60</u>	Ext. Packer _____
(Q) Final Hydrostatic Mud	<u>2080</u> PSI	Initial Shut-In <u>30</u>	Shale Packer _____

TRILOBITE TESTING INC. SHALL NOT BE LIABLE FOR DAMAGED OF ANY KIND OF THE PROPERTY OR PERSONNEL OF THE ONE FOR WHOM A TEST IS MADE, OR FOR ANY LOSS SUFFERED OR SUSTAINED, DIRECTLY OR INDIRECTLY, THROUGH THE USE OF ITS EQUIPMENT, OR ITS STATEMENTS OR OPINION CONCERNING THE RESULTS OF ANY TEST. TOOLS LOST OR DAMAGED IN THE HOLE SHALL BE PAID FOR AT COST BY THE PARTY FOR WHOM THE TEST IS MADE.

Approved By Dave Williams
 Our Representative Zachary R. Stover

T-On Location	T-Started	T-Open	T-Pulled	T-Out
<u>1:16</u>	<u>3:37</u>	<u>9:25</u>	<u>11:55</u>	<u>16:24</u>
<u>3:37</u>	<u>3:37</u>	<u>9:25</u>	<u>11:55</u>	<u>16:24</u>
<u>16</u>	<u>16</u>	<u>16</u>	<u>16</u>	<u>16</u>

Mileage ✓ 104 RT
 Sub Total: 1655
 Std. By ✓ 6hrs 60m
 Acc. Chg: _____
 Other: _____
 Total: \$ 8250