

KANSAS GEOLOGICAL SOCIETY  
 KANSAS WELL LOG BUREAU - KANSAS WELL SAMPLE BUREAU  
 KANSAS GEOLOGICAL SOCIETY BUILDING  
 508 EAST MURDOCK - WICHITA, KANSAS

19-32-11W

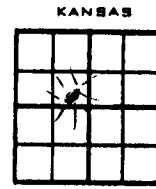
COMPANY BEARDMORE DRILLING

SEC. 19 T. 32 R. 11W  
 LOC. S½ SE NW

FARM Bumgarner NO. 1

TOTAL DEPTH 4357'  
 COMM. 11-28-66 COMP. 12-9-66  
 SHOT OR TREATED  
 CONTRACTOR Rains & Williamson  
 ISSUED 5-6-67

COUNTY Barber



CASING  
 20 10  
 15 8 5/8" 221.29' cem w/ 175 sx  
 12 6  
 13 5

ELEVATION 1433' KB  
 SIBW  
 PRODUCTION 1,450,000 CU  
 Doug sd 3559-64

FIGURES INDICATE BOTTOM OF FORMATIONS

Sand	20°
Shale & Red Bed	640°
Red Bed & Shale	1285°
Sale & Shells	1610°
Shale & Lime	1875°
Lime	1975°
Lime & Shale	2125°
Shale & Lime	2670°
Shale w/Lime	2910°
Shale & Lime	3435°
Lime & Shale	3535°
Sand	3581
Shale & Sand	3705°
Lime	4302°
Lime & Chert	4336°
Chert	4357°
 Rotary Total Depth	 4357°

TOPS: SCOUT	
Elgin sand	3320
Heebner	3498
Douglas sand	3556
Lansing	3688
Base Kansas City	4176
Re- Mississippi	4294
Mississippi lansing	4342

We certify the above log is true and correct to the best of our knowledge and belief.

RAINS & WILLIAMSON OIL CO.

*Wilson Rains*  
 Wilson Rains