

MAR 15 1979

**KANSAS DRILLERS LOG**

*State Geological Survey  
WICHITA BRANCH*

S. 12 T. 32 R. 12 W

API No. 15 — 007 — 20,725  
County Number

Loc. SE SW SW

Operator  
Aylward Drilling Co.

County Barber

Address  
909 First National Bank Bldg. Wichita, Kansas 67202

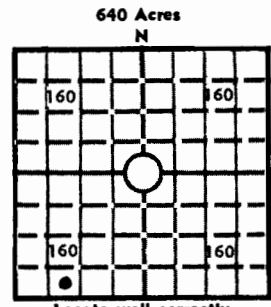
Well No. #2 Lease Name Doherty

Footage Location  
330 feet from (M) (S) line 990 feet from X&E (W) line

Principal Contractor Union Drlg. Co., Inc. Geologist Frank Hamlin

Spud Date 3-23-79 Total Depth 4300 P.B.T.D. 4293

Date Completed 4-1-79 Oil Purchaser Permian



Locate well correctly

Elev.: Gr. 1455'

DF 1457' KB 1459'

**CASING RECORD**

Report of all strings set — surface, intermediate, production, etc.

| Purpose of string | Size hole drilled | Size casing set (in O.D.) | Weight lbs/ft. | Setting depth | Type cement | Sacks | Type and percent additives |
|-------------------|-------------------|---------------------------|----------------|---------------|-------------|-------|----------------------------|
| Surface           | 12 1/2"           | 8 5/8"                    | 24#            | 206           | Common      | 200   | 2% gel;<br>3% c. cl.       |
| Production        | 7 7/8"            | 5 1/2"                    | 14#            | 4299          | "           | 75    | Regular                    |
|                   |                   |                           |                |               |             |       |                            |
|                   |                   |                           |                |               |             |       |                            |

**LINER RECORD**

| Top, ft. | Bottom, ft. | Sacks cement |
|----------|-------------|--------------|
|          |             |              |

**PERFORATION RECORD**

| Shots per ft. | Size & type | Depth interval |
|---------------|-------------|----------------|
| 2             | 5/8" - Jets | 4232-4237      |
| 2             | 5/8" - Jets | 4249-4255      |

**TUBING RECORD**

| Size   | Setting depth | Packer set at |
|--------|---------------|---------------|
| 2 3/8" | 4289          |               |

**ACID, FRACTURE, SHOT, CEMENT SQUEEZE RECORD**

| Amount and kind of material used | Depth interval treated   |
|----------------------------------|--------------------------|
| Acidized w/500 gals. - MCA       | 4232-4237 &<br>4249-4255 |
| Fraced w/10,000 lbs. sand        | "                        |
|                                  |                          |

**INITIAL PRODUCTION**

Date of first production 4-23-79 Producing method (flowing, pumping, gas lift, etc.) Flowed & Pumping

RATE OF PRODUCTION PER 24 HOURS  
Oil 65 bbls. Gas \_\_\_\_\_ MCF Water 0 bbls. Gas-oil ratio \_\_\_\_\_ CFPB

Disposition of gas (vented, used on lease or sold) \_\_\_\_\_ Producing interval(s) 4232-4237 & 4249-4255

INSTRUCTIONS: As provided in KCC Rule 82-2-125, within 90 days after completion of a well, one completed copy of this Drillers Log shall be transmitted to the State Geological Survey of Kansas, 4150 Monroe Street, Wichita, Kansas 67209. Copies of this form are available from the Conservation Division, State Corporation Commission, 3830 So. Meridian (P.O. Box 17027), Wichita, Kansas 66217. Phone AC 316-522-2206. If confidential custody is desired, please note Rule 82-2-125. Drillers Logs will be on open file in the Oil and Gas Division, State Geological Survey of Kansas, Lawrence, Kansas 66044.

Operator  
Aylward Drilling Company

DESIGNATE TYPE OF COMP.: OIL, GAS,  
DRY HOLE, SWDW, ETC.:

Well No. 2 Lease Name Doherty Oil

S 12 T 32 R 12 W SE SW SW, Barber County, Kansas

**WELL LOG**

Show all important zones of porosity and contents thereof; cored intervals, and all drill-stem tests, including depth interval tested, cushion used, time tool open, flowing and shut-in pressures, and recoveries.

SHOW GEOLOGICAL MARKERS, LOGS RUN,  
OR OTHER DESCRIPTIVE INFORMATION.

| FORMATION DESCRIPTION, CONTENTS, ETC. | TOP  | BOTTOM | NAME | DEPTH |
|---------------------------------------|------|--------|------|-------|
| Sand and red bed                      | 0    | 215    |      |       |
| Sand and shells                       | 215  | 680    |      |       |
| Red bed and shale                     | 680  | 900    |      |       |
| Shale                                 | 900  | 1520   |      |       |
| Shale and sand                        | 1520 | 1600   |      |       |
| Shale                                 | 1600 | 2712   |      |       |
| Shale and sand                        | 2712 | 2872   |      |       |
| Shale                                 | 2872 | 3806   |      |       |
| Shale and lime                        | 3806 | 3895   |      |       |
| Lime and shale                        | 3895 | 4092   |      |       |
| Lime, chert, and shale                | 4092 | 4170   |      |       |
| Lime and shale                        | 4170 | 4252   |      |       |
| Lime and chert                        | 4252 | 4272   |      |       |
| Lime                                  | 4272 | 4300   |      |       |
| T. D.                                 |      | 4300   |      |       |

USE ADDITIONAL SHEETS, IF NECESSARY, TO COMPLETE WELL RECORD.

Date Received

*P. Frank Hamlin*  
Signature

Manager  
Title

9-11-81  
Date

12-32-12W<sup>P1</sup>

State Geological Survey  
WICHITA, BRANCH

CONTRACTOR'S WELL LOG

OPERATOR:  
CONTRATOR:  
WELL NAME:  
LOCATION:  
  
COMMENCED:  
COMPLETED:

Aylward Drilling Company  
Union Drilling Co., Inc.  
#2 Doherty  
SE SW SW Section 12-32S-12W  
Barber County, Kansas  
March 23, 1979  
April 1, 1979

*Elev: 1459 KB*

|      |      |                        |                              |
|------|------|------------------------|------------------------------|
| 0    | 215  | Sand and red bed       | Set 8-5/8" @206' w/200 sacks |
| 215  | 680  | Sand and shells        |                              |
| 680  | 900  | Red bed and shale      |                              |
| 900  | 1520 | Shale                  |                              |
| 1520 | 1600 | Shale and sand         |                              |
| 1600 | 2712 | Shale                  |                              |
| 2712 | 2872 | Shale and sand         |                              |
| 2872 | 3806 | Shale                  |                              |
| 3806 | 3895 | Shale and lime         |                              |
| 3895 | 4092 | Lime and shale         |                              |
| 4092 | 4170 | Lime, chert, and shale |                              |
| 4170 | 4252 | Lime and shale         |                              |
| 4252 | 4272 | Lime and chert         |                              |
| 4272 | 4300 | Lime                   |                              |
|      | 4300 | T. D.                  |                              |

We certify that the above and foregoing is a true and correct copy of the log on the #2 Doherty, SE SW SW Section 12-32S-12W, Barber County, Kansas.

UNION DRILLING CO., INC.

*R. D. Messinger*  
R. D. Messinger

STATE OF KANSAS )  
COUNTY OF SEDGWICK ) SS

Subscribed and sworn to before me, a Notary Public, in and for the aforesaid County and State as of this 3rd day of April,,1979

My appointment expires:  
6-2-82

*Cynthia L. Romey*  
Cynthia L. Romey - Notary Public

STATE OF KANSAS