

OPEN HOLE TEST

JOHNSTON TESTERS, INC.

OFFICES: Houston, Texas - Los Angeles, California - Calgary, Canada

18-325-14W
NE NW NW

DATE 7-29-57
 OPEN HOLE TEST NO. 1 WELL: Stumph & Smith #A-2
 FIELD _____ COUNTY Barber STATE Kansas
 COMPANY Aylward Drilling Company
 ADDRESS 813 First National Bank Building; Wichita, Kansas
 TEST APPROVED BY Joley Elster
 JOHNSTON OPERATOR Jerry Swertfeger TICKET NO. 16789 N

GENERAL TEST DATA

TYPE TEST <u>Conventional</u>		TOTAL DEPTH <u>4765'</u>
1. Test Interval: <u>4712'</u> To <u>4765'</u>	7. Fluid Cushion: Type <u>None</u> Amount _____	
2. Tool Open _____ Hrs. <u>21</u> Min	8. Air Chamber Amount <u>30'</u> Size: <u>4 1/2"</u>	
3. Initial Shut In _____ Hrs. <u>20</u> Min	9. Did Packer(s) Hold? <u>Yes</u>	
4. Final Shut In _____ Hrs. <u>20</u> Min	10. Did Tool Plug? <u>No</u> Where? _____	
5. Choke: Top <u>1/2"</u> Bottom <u>1/2"</u>	11. Was Test Reversed Out? <u>No</u>	
6. Fluid Recovery <u>45'</u> Total, <u>45'</u> gas out mud.		

REMARKS:

SURFACE INFORMATION

1. Blow: Good blow.

2. Maximum Surface Pressure _____ Did Well Flow? Yes, gas

Description Or Rate of Flow	Time	Max. Pressure	Size Surface Choke
<u>Gas to surface</u>	<u>2 Mins.</u>	<u>-</u>	<u>1/2"</u>

MUD, HOLE, & TOOL DATA

MUD, HOLE & JOHNSTON TOOL DATA

MUD: Type Starch, Weight 9.7 Viscosity 44

HOLE: Main Hole Size 7 7/8" Drill Pipe Size 4 1/2" FH

Rat Hole Size _____

JOHNSTON TOOLS:

1. Packer(s): Type Bob Tail O.D. 6 5/8" Type _____ O.D. _____

Set At 4712' Set At _____

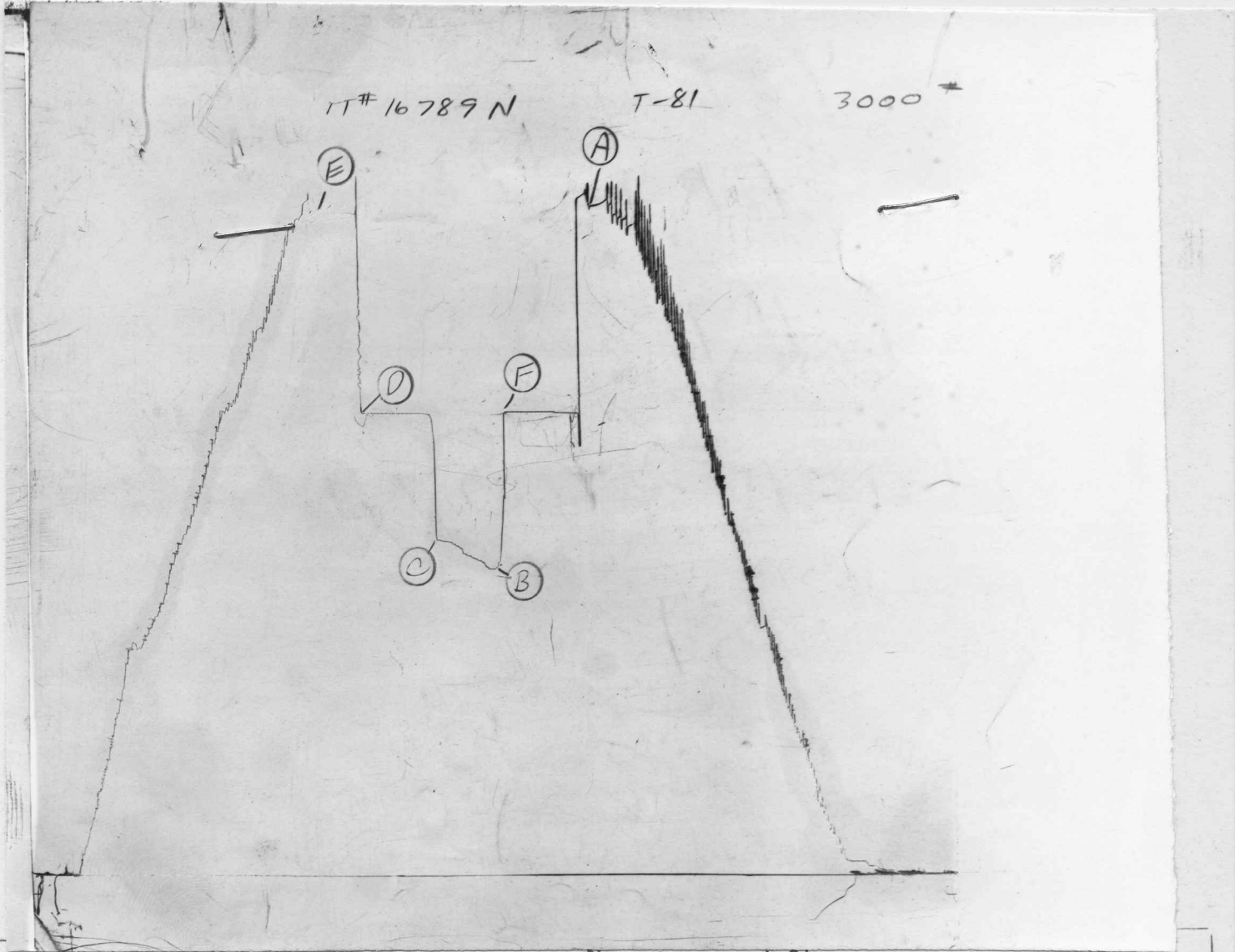
2. Extra Equipment: None,

Number of Copies Requested: 5x

IT# 16789 N

T-81

3000 *



Test Ticket No. 16789 N
Chart Number _____

Pressure Recorder:

No. 1-01
Cap. 3000#
Location 4704'

PRESSURE DATA	
Initial Hydrostatic Mud	2536
Initial Flow	1160
Final Flow	1269
Final Shut-In	1746
Final Hydrostatic Mud	2518
"Initial Shut-In"	1753

Point	Pressure

Point	Pressure

Remarks: Well temperature 125^{OF}.

OPEN HOLE TEST

JOHNSTON TESTERS, INC.

OFFICES: Houston, Texas - Los Angeles, California - Calgary, Canada

DATE 7-30-57

OPEN HOLE TEST NO. 2 WELL: Stumph & Smith #A-2
 FIELD - COUNTY Barber STATE Kansas

COMPANY Aylward Drilling Company
 ADDRESS 813 First National Bank Building; Wichita, Kansas
 TEST APPROVED BY Joley Elster
 JOHNSTON OPERATOR Jerry Swertfeger TICKET NO. 16790 N

18-325-14W
NE-NW-NW

GENERAL TEST DATA

TYPE TEST <u>Conventional</u>		TOTAL DEPTH <u>4802'</u>
1. Test Interval: <u>4765'</u> To <u>4802'</u>	7. Fluid Cushion: Type <u>None</u> Amount _____	
2. Tool Open _____ Hrs. <u>35</u> Min	8. Air Chamber Amount <u>7'</u> Size: <u>4 1/2"</u>	
3. Initial Shut In _____ Hrs. <u>20</u> Min	9. Did Packer(s) Hold? <u>Yes</u>	
4. Final Shut In _____ Hrs. <u>20</u> Min	10. Did Tool Plug? <u>No</u> Where? _____	
5. Choke: Top <u>1/2"</u> Bottom <u>1/2"</u>	11. Was Test Reversed Out? <u>No</u>	
6. Fluid Recovery <u>47'</u> Total,		
<u>25'</u> free oil.		
<u>22'</u> heavy oil cut mud.		

REMARKS:

SURFACE INFORMATION

1. Blow: Good blow.

2. Maximum Surface Pressure <u>36#</u>	Did Well Flow? <u>Yes, gas</u>		
Description Or Rate of Flow	Time	Max. Pressure	Size Surface Choke
<u>3,310,000 cubic feet of gas.</u>	<u>5 Mins.</u>		<u>1/2"</u>
<u>4,070,000 cubic feet of gas.</u>	<u>10 Mins.</u>		
<u>4,640,000 cubic feet of gas.</u>	<u>15 Mins.</u>		
<u>4,735,000 cubic feet of gas.</u>	<u>20 Mins.</u>		
<u>4,830,000 cubic feet of gas.</u>	<u>25 Mins.</u>		
<u>4,830,000 cubic feet of gas.</u>	<u>30 Mins.</u>		

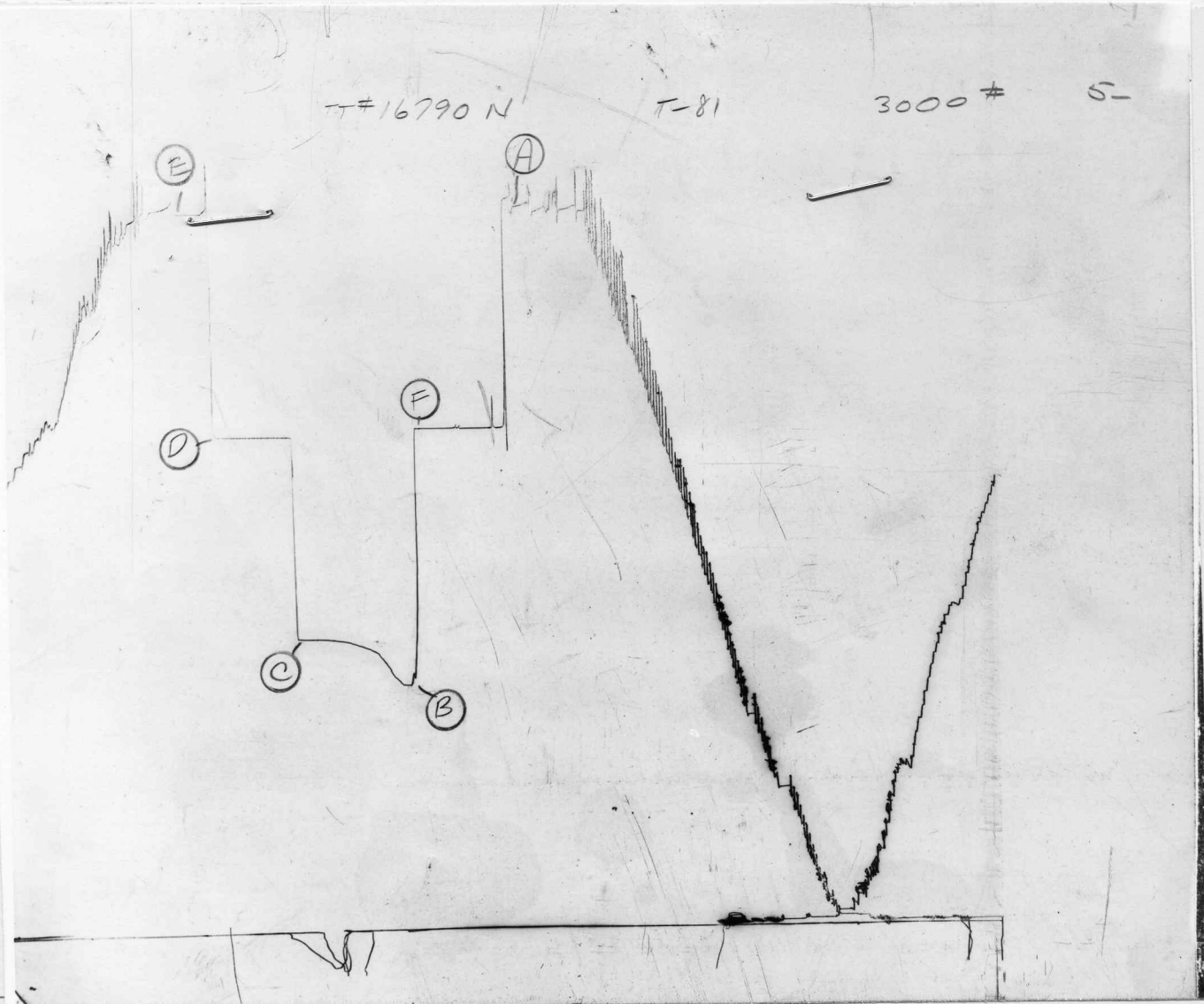
MUD, HOLE, & TOOL DATA

MUD, HOLE & JOHNSTON TOOL DATA

MUD: Type Starch, Weight 9.9 Viscosity 42
 HOLE: Main Hole Size 7 7/8" Drill Pipe Size 4 1/2" FH
 Rat Hole Size -

JOHNSTON TOOLS:
 1. Packer(s): Type Bob Tail O.D. 6 5/8" Type _____ O.D. _____
 Set At 4765' Set At _____
 2. Extra Equipment: None.

Number of Copies Requested: 5 x



Test Ticket No. 16790 N Pressure Recorder: No. T-81
 Chart Number _____ Cap. 3000#
 Location 4794'

PRESSURE DATA		Point	Pressure	Point	Pressure
A	Initial Hydrostatic Mud				
B	Initial Flow				
C	Final Flow				
D	Final Shut-In				
E	Final Hydrostatic Mud				
	"Initial Shut-In"				
Remarks: <u>Well Temperature 120 F.</u>					