

15-033-21153

14-32s-19w
Hullett 1-14
American Warrior, Inc.



**TRILOBITE
TESTING, INC**

ORIGINAL

DRILL STEM TEST REPORT

CONFIDENTIAL

Prepared For: **American Warrior, Inc**

KCC

P.O. Box 399 **RECEIVED**

DEC 30 2000 KANSAS DEPARTMENT OF REVENUE
Garden City, KS 67840

CONFIDENTIAL

DEC 29 2000

ATTN: Cecil O'Brate

RELEASED

14-32-19 Comanche KS CONSERVATION DIVISION
WICHITA, KS

DEC 30 2000

Hullett # 1-14

Start Date: 2000.11.09 @ 14:58:00

End Date: 2000.11.09 @ 14:24:00

Job Ticket #: 13929 DST #: 1

FROM CONFIDENTIAL

Trilobite Testing, L.L.C.

PO Box 362 Hays KS 67601

PH: 785-625-4778 FAX: 785-625-5620

American Warrior, In

Hullett # 1-14

14-32-19 Comanche KS

DST #: 1

Viola

2000.11.09



TRILOBITE TESTING, INC

DRILL STEM TEST REPORT

American Warrior, In
 P.O.Box 399
 Garden City, KS 67846
 ATTN: Cecil O'Brate

Hullett # 1-14
14-32-19 Comanche KS
 Job Ticket: 13929 **DST#: 1**
 Test Start: 2000.11.09 @ 08:58:00

GENERAL INFORMATION:

Formation: **Viola**
 Deviated: **No Whipstock:** ft (CF)
 Time Tool Opened: 11:54:19
 Time Test Ended: 14:24:00

KCC
DEC 30 2000
CONFIDENTIAL

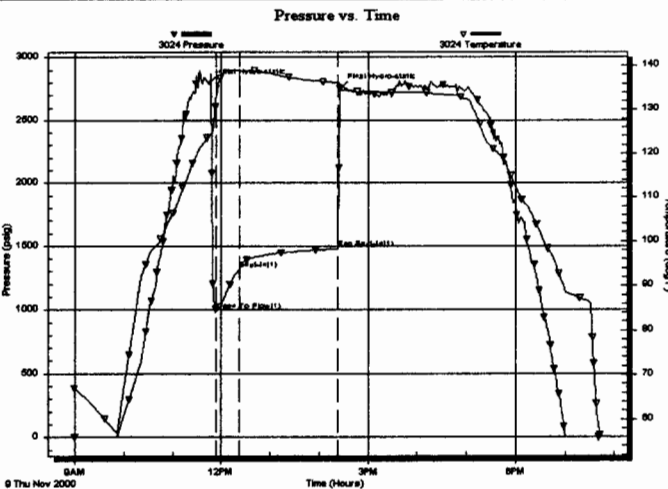
Test Type: **Conventional Bottom Hole**
 Tester: **Dan Bangle**
 Unit No: **11**
 Reference Elevations: (KB)
 2038.00 ft (CF)
 KB to GR/CF:

Interval: **5788.00 ft (CF) To 5817.00 ft (CF) (TVD)**
 Total Depth: **5817.00 ft (CF)**
 Hole Diameter: **7.88 inches** Hole Condition: **Fair**

Serial #: 3024 Inside
 Press@RunDepth: **1309.44 psig @ 5789.01 ft (CF)**
 Start Date: **2000.11.09** End Date:
 Start Time: **08:58:50** End Time:

Capacity: **7000.00 psig**
 Last Calib.: **2000.11.09**
 Time On Btm: **2000.11.09 @ 11:44:49**
 Time Off Btm: **2000.11.09 @ 14:26:19**

TEST COMMENT: **IF-Strong B.O.B. in 30**
FF-n/a



PRESSURE SUMMARY

Time (Min.)	Pressure (psig)	Temp (deg F)	Annotation
166	2794.91	124.18	Initial Hydro-static
176	988.85	133.51	Open To Flow (1)
204	1309.44	138.82	Shut-in(1)
325	1476.33	136.10	End Shut-in(1)
328	2751.47	135.71	Final Hydro-static

RELEASED

DEC 30 2000


FROM CONFIDENTIAL

Recovery

Length (m)	Description	Volume (m³)
5769.00	Clean gassy oil 50%g 50%o	78.56

Gas Rates

	Choke (mm)	Pressure (kPaa)	Gas Rate (m³/d)
First Gas Rate	0.50	10.00	158.44
Last Gas Rate	0.50	5.00	124.71
Max. Gas Rate	0.50	10.00	158.44

	DRILL STEM TEST REPORT		TOOL DIAGRAM
	American Warrior, In P.O.Box 399 Garden City, KS 67846 ATTN: Cecil O'Brate	Hullett # 1-14 14-32-19 Comanche KS Job Ticket: 13929 DST#: 1 Test Start: 2000.11.09 @ 08:58:00	

Tool Information

Drill Pipe:	Length: 5509.00 ft	Diameter: 3.80 inches	Volume: 77.28 bbl	Tool Weight: 1200.00 lb
Drill Collar:	Length: 260.00 ft	Diameter: 2.25 inches	Volume: 1.28 bbl	Weight set on Packer: 30000.00 lb
Heavy Wt. Pipe:	Length: 0.01 ft	Diameter: 0.01 inches	Volume: 0.00 bbl	Weight to Pull Loose: 105000.0 lb
Drill Pipe Above KB:	10.01 ft			Tool Chased 0.01 ft
Depth to Top Packer:	5783.00 ft			String Weight: Initial 82000.00 lb
Depth to Bottom Packer:	ft			Final 100000.0 lb
Interval between Packers:	ft			
Tool Length:	58.02 ft			
Number of Packers:	2	Diameter: 6.75 inches		

Tool Comments

Tool Description	Length (ft)	Serial No.	Position	Depth (ft)	Accum. Lengths
C.O. Sub	1.00			5760.00	
S.I. Tool	5.00			5765.00	
HYD S.I. Tool	5.00			5770.00	
Jars	5.00			5775.00	
Safety Joint	3.00			5778.00	
Packer	5.00			5783.00	24.00 Bottom Of Top Packer
Packer	5.00			5788.00	
Stubb	1.00			5789.00	
Recorder	0.01	3024	Inside	5789.01	
Perforations	23.00			5812.01	
Recorder	0.01	13254	Outside	5812.02	
Bullnose	5.00			5817.02	34.02 Bottom Packers & Anchor

Total Tool Length: 58.02

Serial #: 3024

Inside

American Warrior, h

14-32-19 Comanche KS

Pressure vs. Time

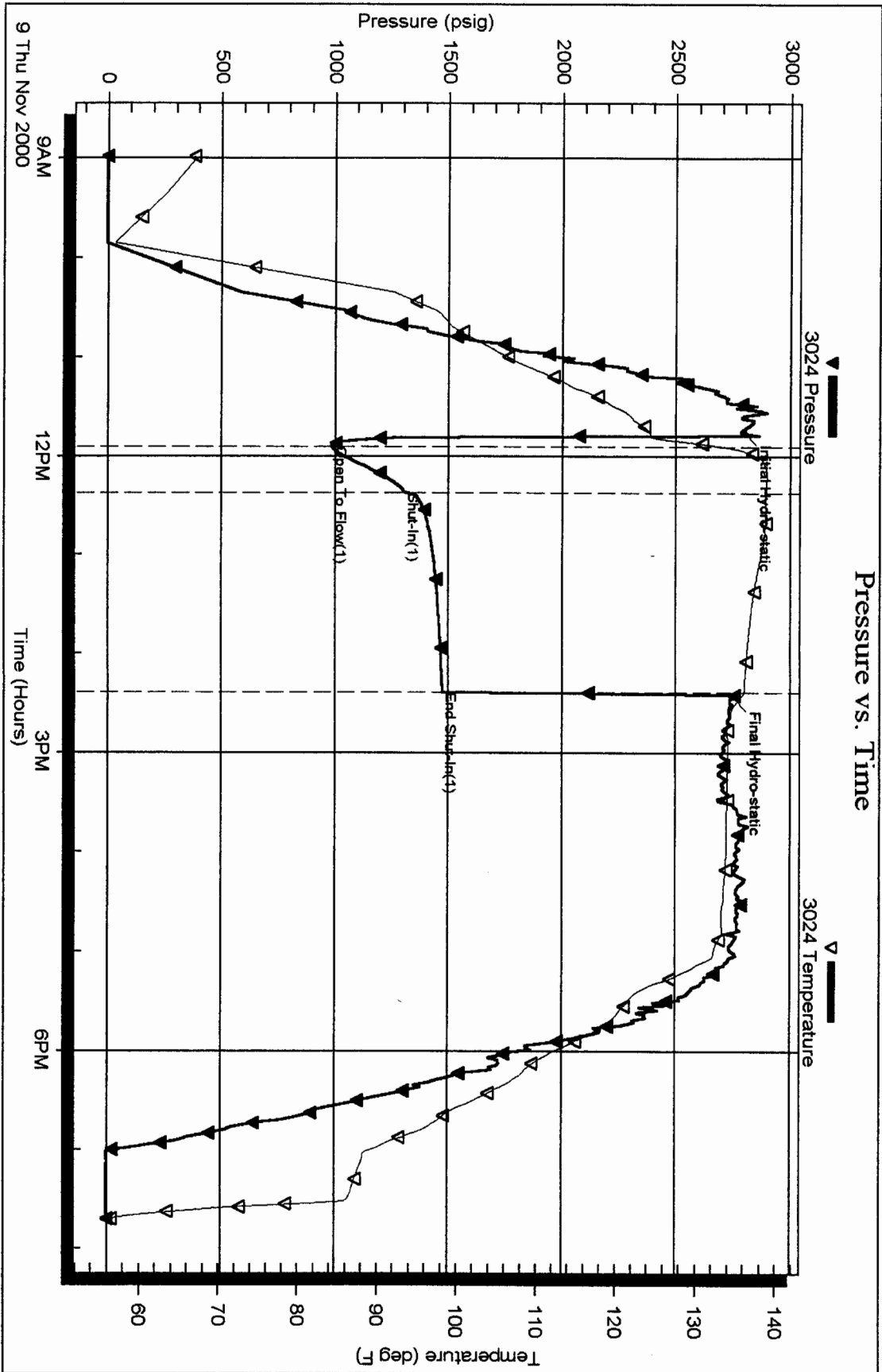
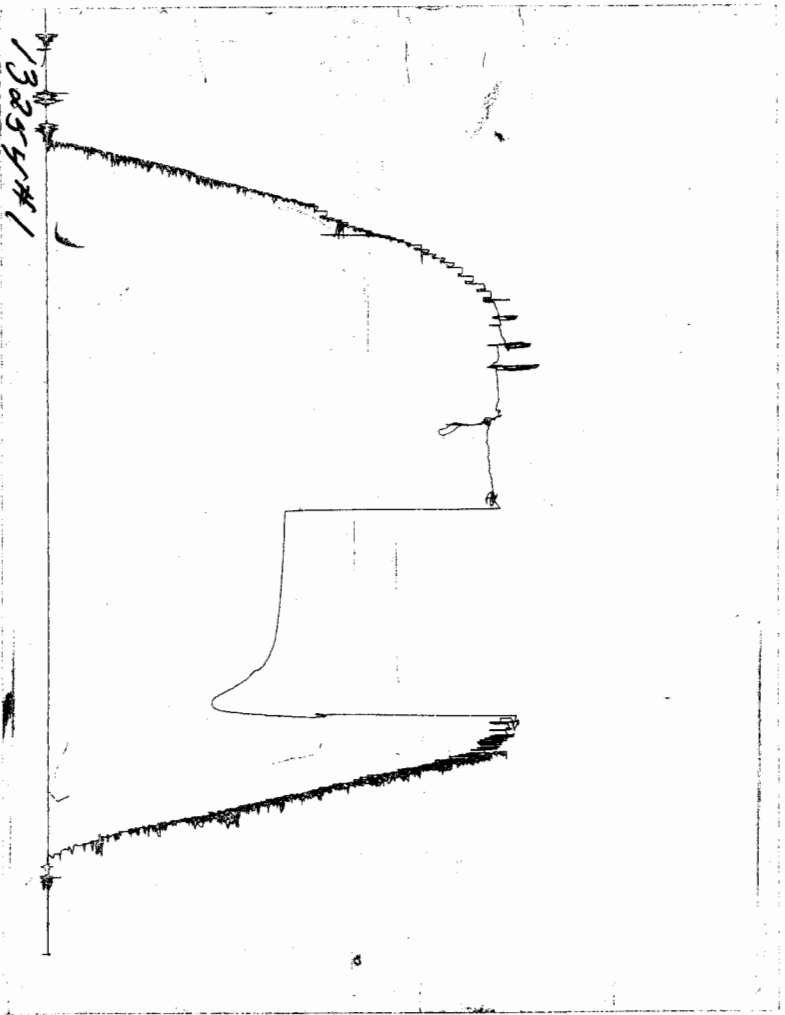


CHART PAGE



This is a photocopy of the actual AK-1 recorder chart

TRILOBITE TESTING L.L.C.

P.O. Box 362 • Hays, Kansas 67601

N^o 13929

Test Ticket

Well Name & No. <u>Hullett #1-14</u>	Test No. <u>1</u>	Date <u>11-9-00</u>
Company <u>American Warrior, Inc</u>	Zone Tested <u>Viola</u>	
Address <u>P.O. Box 399, Garden City, Ks. 67846</u>	Elevation <u>2050</u>	KB <u>2038</u> GL
Co. Rep / Geo. <u>AJ Downing</u>	Cont. <u>Abercrombie #4</u>	Est. Ft. of Pay <u> </u> Por. <u> </u> %
Location: Sec. <u>14</u>	Twp. <u>32</u>	Rge. <u>19</u>
Co. <u>Comanche</u>		State <u>Ks</u>
No. of Copies <u> </u>	Distribution Sheet (Y, N) <u> </u>	Turnkey (Y, N) <u> </u>
Evaluation (Y, N) <u> </u>		

Interval Tested <u>5788 - 5817</u>	Initial Str Wt./Lbs. <u>82,000</u>	Unseated Str Wt./Lbs. <u>100,000</u>
Anchor Length <u>29</u>	Wt. Set Lbs. <u>30,000</u>	Wt. Pulled Loose/Lbs. <u>105,000</u>
Top Packer Depth <u>5283</u>	Tool Weight <u>1200</u>	
Bottom Packer Depth <u>5288</u>	Hole Size — <u>7 7/8"</u>	Rubber Size — <u>6 3/4"</u>
Total Depth <u>5817</u>	Wt. Pipe Run <u> </u>	Drill Collar Run <u>260</u>
Mud Wt. <u>9</u> LCM <u>4#</u> Vis. <u>88</u> WL <u>11</u>	Drill Pipe Size <u>4.5 XH</u>	Ft. Run <u>5509</u>
Blow Description <u>I.F. Strong - B.O.B. in 30 sec GTS in 3 min.</u>		
<u>oil to surface in 30 min.</u>		
<u>Reversed oil into frack tank - (80 Bbls)</u>		

Recovery — Total Feet <u>5769</u>	GIP <u>GTS</u>	Ft. in DC <u>260</u>	Ft. in DP <u>5509</u>
Rec. <u>5769</u>	Feet Of <u>Clean gassy oil</u>	<u>50</u> %gas	<u>50</u> %oil
Rec. <u> </u>	Feet Of <u> </u>	%gas	%oil
Rec. <u> </u>	Feet Of <u> </u>	%gas	%oil
Rec. <u> </u>	Feet Of <u> </u>	%gas	%oil
Rec. <u> </u>	Feet Of <u> </u>	%gas	%oil
BHT <u>136</u>	°F Gravity <u> </u>	°API D@ <u> </u>	°F Corrected Gravity <u>42</u>
RW <u> </u>	@ <u> </u>	°F Chlorides <u> </u>	ppm Recovery Chlorides <u>6,000</u>
		ppm System	

(A) Initial Hydrostatic Mud	AK-1 <u>2794</u>	Alpine PSI Recorder No. <u>3024</u>	T-On Location <u>06:30</u>
(B) First Initial Flow Pressure	<u>988</u>	PSI (depth) <u>5789</u>	T-Started <u>08:58</u>
(C) First Final Flow Pressure	<u>1309</u>	PSI Recorder No. <u>13254</u>	T-Open <u>11:54</u>
(D) Initial Shut-In Pressure	<u>1476</u>	PSI (depth) <u>5814</u>	T-Pulled <u>14:24</u>
(E) Second Initial Flow Pressure	<u> </u>	PSI Recorder No. <u> </u>	T-Out <u>19:50</u>
(F) Second Final Flow Pressure	<u> </u>	PSI (depth) <u> </u>	T-Off Location <u> </u>
(G) Final Shut-in Pressure	<u> </u>	PSI Initial Opening <u>30</u>	Test <u> </u>
(Q) Final Hydrostatic Mud	<u>2751</u>	PSI Initial Shut-in <u>120</u>	Jars <u>X</u>
		Final Flow <u> </u>	Safety Joint <u>X</u>
		Final Shut-in <u> </u>	Straddle <u> </u>
			Circ. Sub <u>X</u>
			Sampler <u> </u>
			Extra Packer <u> </u>
			Elec. Rec. <u>X</u>
			Mileage <u>121</u>
			Other <u> </u>
			TOTAL PRICE \$ <u> </u>

TRILOBITE TESTING L.L.C. SHALL NOT BE LIABLE FOR DAMAGE OF ANY KIND OF THE PROPERTY OR PERSONNEL OF THE ONE FOR WHOM A TEST IS MADE, OR FOR ANY LOSS SUFFERED OR SUSTAINED, DIRECTLY OR INDIRECTLY, THROUGH THE USE OF ITS EQUIPMENT, OR ITS STATEMENTS OR OPINION CONCERNING THE RESULTS OF ANY TEST. TOOLS LOST OR DAMAGED IN THE HOLE SHALL BE PAID FOR AT COST BY THE PARTY FOR WHOM THE TEST IS MADE.

Approved By

Our Representative Dan Rangle

NATURAL GAS ANALYSIS REPORT

Sampled by:
Trilobite Testing, L. L. C.
Hays, Kansas
Scott City, Kansas
Phone: 800-728-5369
Fax: 913-625-5620

Analyzed by:
Caraway Analytical, Inc
P. O. Box 2137
Liberal, Kansas 67905
Phone: 316-624-5389
Fax: 316-626-7108

Lab Number	20005679	Analyzed	11/13/00
Sample From:	Hullett 1-14 DST 1	Pressure:	
Producer:	American Warrior, Inc.	Temperature:	
Date	Location	Time	
	14-32-19		
Time:		County:	Comanche
Sampler:		State:	Kansas
Source:		Formation:	Viola

	Mole %	GPM
Helium	He: 0.117	0.000
Hydrogen	H2: 0.018	0.000
Oxygen	O2: 0.000	0.000
Nitrogen	N2: 7.424	0.000
Carbon Dioxide	CO2: 0.039	0.000
Methane	C1: 70.711	0.000
Ethane	C2: 11.198	2.995
Propane	C3: 5.475	1.509
Iso Butane	iC4: 0.868	0.284
Normal Butane	nC4: 2.125	0.670
Iso Pentane	iC5: 0.449	0.164
Normal Pentane	nC5: 0.618	0.224
Hexanes Plus	C6+: 0.958	0.418

TOTAL: 100.000 6.264

Z Fact: 0.9964

SP.GR.: 0.7845

BTU (SAT): 1225.3 @ 14.73 psia

BTU (DRY): 1247.0 @ 14.73 psia

OCTANE RATING: 112.4

COMMENTS:

0.000