

WESTERN TESTING COMPANY  
SUBSURFACE PRESSURE SURVEY

DATE: 5/19/83  
CUSTOMER: WHITE & ELLIS DRLG INC.  
WELL: 2 TEST: 1  
ELEVATION (KB): 1452  
SECTION: 23  
RANGE: 10W COUNTY: BARBER  
GAUGE SN #1566 RANGE: 4300

TICKET #18957  
LEASE: WERNER  
GEOLOGIST: MICHAEL W DIXON  
FORMATION: MISSISSIPPI  
TOWNSHIP: 32S  
STATE: KANSAS  
CLOCK: 12

INTERVAL TEST FROM: 4323 FT TO: 4370 FT TOTAL DEPTH: 4370 FT  
DEPTH OF SELECTIVE ZONE: FT  
PACKER DEPTH: 4318 FT SIZE: 6 5/8 IN PACKER DEPTH: 4323 FT SIZE: 6 5/8 IN  
PACKER DEPTH: FT SIZE: IN PACKER DEPTH: FT SIZE: IN

DRILLING CONTRACTOR: WHITE & ELLIS DRLG  
MUD TYPE: STARCH VISCOSITY: 48  
WEIGHT: 9.7 WATER LOSS (CC): 9.6  
CHLORIDES (P.P.M.): 27000  
JARS - MAKE: SERIAL NUMBER:  
DID WELL FLOW? NO REVERSED OUT? NO  
DRILL COLLAR LENGTH: 335 FT I.D.: 2.2 IN  
WEIGHT PIPE LENGTH: FT I.D.: IN  
DRILL PIPE LENGTH: 3967 FT I.D.: 3.8 IN  
TEST TOOL LENGTH: 21 FT TOOL SIZE: 5 1/2 IN  
ANCHOR LENGTH: 15+32 DP FT SIZE: 5 1/2 IN  
SURFACE CHOKE SIZE: 3/4 IN BOTTOM CHOKE SIZE: 3/4 IN  
MAIN HOLE SIZE: 7 7/8 IN TOOL JOINT SIZE: 4 1/2 XH IN

BLOW: INITIAL FLOW PERIOD WEAK BLOW-DEAD IN 7 MIN.  
FINAL FLOW PERIOD WEAK-DEAD IN 2 MINUTES.  
FLUSHED TOOL - 2 INCH- WEAK-DEAD IN 8 MINUTES.

RECOVERED: 190 FT OF: DRILLING MUD  
RECOVERED: FT OF:  
RECOVERED: FT OF:  
RECOVERED: FT OF:  
RECOVERED: FT OF:  
RECOVERED: FT OF:  
RECOVERED: FT OF:  
RECOVERED: FT OF:  
RECOVERED: FT OF:  
RECOVERED: FT OF:

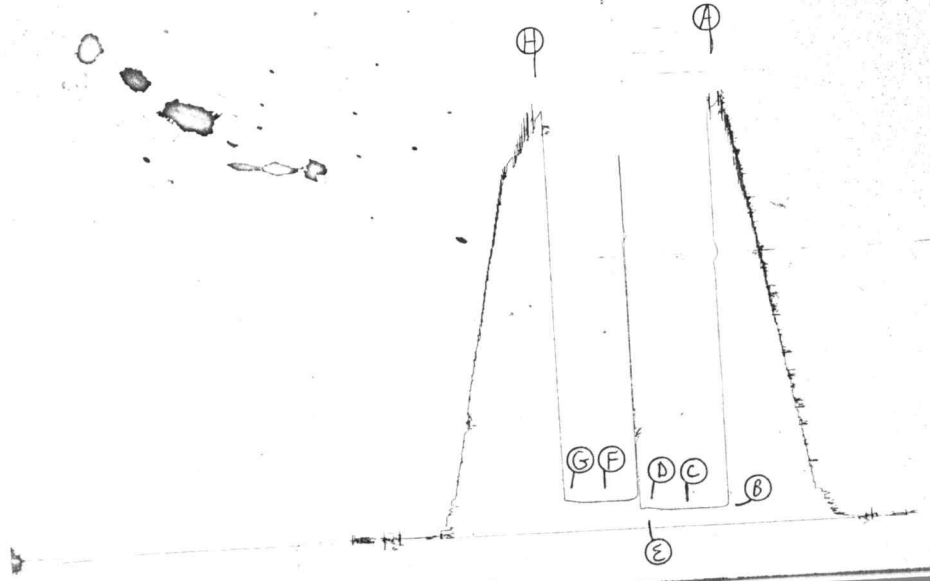
REMARKS:

TIME SET PACKER(S): 11:00 AM TIME STARTED OFF BOTTOM: 3:00 PM  
WELL TEMPERATURE: 119 'F  
INITIAL HYDROSTATIC PRESSURE: (A) 2315 PSI  
INITIAL FLOW PERIOD MIN: 30 (B) 101 PSI TO (C) 101 PSI  
INITIAL CLOSED IN PERIOD MIN: 30 (D) 118 PSI  
FINAL FLOW PERIOD MIN: 30 (E) 112 PSI TO (F) 166 PSI  
FINAL CLOSED IN PERIOD MIN: 30 (G) 181 PSI  
FINAL HYDROSTATIC PRESSURE (H) 2300 PSI



TKT # 18957

I



WESTERN TESTING COMPANY  
SUBSURFACE PRESSURE SURVEY

DATE: 5/20/83  
CUSTOMER: WHITE & ELLIS DRLG INC.  
WELL: 2 TEST: 2  
ELEVATION (KB): 1452  
SECTION: 23  
RANGE: 10W COUNTY: BARBER  
GAUGE SN #1566 RANGE: 4300

TICKET #18958  
LEASE: WERNER  
GEOLOGIST: MICHAEL W DIXON  
FORMATION: MISSISSIPPI  
TOWNSHIP: 32S  
STATE: KANSAS  
CLOCK: 12

INTERVAL TEST FROM: 4370 FT TO: 4380 FT TOTAL DEPTH: 4380 FT  
DEPTH OF SELECTIVE ZONE: FT  
PACKER DEPTH: 4365 FT SIZE: 6 5/8 IN PAKER DEPTH: 4370 FT SIZE: 6 5/8 IN  
PACKER DEPTH: FT SIZE: IN PAKER DEPTH: FT SIZE: IN

DRILLING CONTRACTOR: WHITE & ELLIS DRLG  
MUD TYPE: STARCH VISCOSITY: 48  
WEIGHT: 9.7 WATER LOSS (CC): 9.6  
CHLORIDES (P.P.M.): 27000  
JARS - MAKE: SERIAL NUMBER:  
DID WELL FLOW? NO REVERSED OUT? NO  
DRILL COLLAR LENGTH: 335 FT I.D.: 2.2 IN  
WEIGHT PIPE LENGTH: FT I.D.: IN  
DRILL PIPE LENGTH: 4014 FT I.D.: 3.8 IN  
TEST TOOL LENGTH: 21 FT TOOL SIZE: 5 1/2 IN  
ANCHOR LENGTH: 10 FT SIZE: 5 1/2 IN  
SURFACE CHOKE SIZE: 3/4 IN BOTTOM CHOKE SIZE: 3/4 IN  
MAIN HOLE SIZE: 7 7/8 IN TOOL JOINT SIZE: 4 1/2 XH IN

BLOW: STRONG BLOW.  
GAS TO SURFACE IN 2 MINUTES ON INITIAL FLOW  
PERIOD. SEE ATTACHED GAS SHEET.

RECOVERED: 90 FT OF: FREE OIL WITH 25 GRAVITY @ 66 DEGREES F.  
RECOVERED: FT OF:  
RECOVERED: FT OF:  
RECOVERED: FT OF:  
RECOVERED: FT OF:  
RECOVERED: FT OF:  
RECOVERED: FT OF:  
RECOVERED: FT OF:  
RECOVERED: FT OF:  
RECOVERED: FT OF:

REMARKS:

TIME SET PACKER(S): 2:00 AM TIME STARTED OFF BOTTOM: 4:45 AM  
WELL TEMPERATURE: 121 °F  
INITIAL HYDROSTATIC PRESSURE: (A) 2392 PSI  
INITIAL FLOW PERIOD MIN: 30 (B) 641 PSI TO (C) 620 PSI  
INITIAL CLOSED IN PERIOD MIN: 45 (D) 1408 PSI  
FINAL FLOW PERIOD MIN: 30 (E) 609 PSI TO (F) 616 PSI  
FINAL CLOSED IN PERIOD MIN: 60 (G) 1408 PSI  
FINAL HYDROSTATIC PRESSURE (H) 2332 PSI



WESTERN TESTING COMPANY  
GAS FLOW REPORT

DATE: 5/20/83  
CUSTOMER: WHITE & ELLIS DRLG INC.  
WELL: 2 TEST: 2  
ELEVATION (KB): 1452 FORMATION: MISSISSIPPI  
SECTION: 23 TOWNSHIP: 32S  
RANGE: 10W COUNTY: BARBER STATE: KANSAS  
GAUGE SN #1566 RANGE: 4300 CLOCK: 12

TIME GAUGE TESTER TYPE ORIFICE PRESSURE FLOW DESCRIPTION  
(MIN) SIZE (PSI)

PRE FLOW

TIME GAUGE (MIN)	TESTER TYPE	ORIFICE SIZE	PRESSURE (PSI)	FLOW DESCRIPTION
2				GAS TO SURFACE
3	PETO	2	4 PSIG	1450000 CFPD
5		2	15 PSIG	2830000 CFPD
10		2	17 PSIG	3020000 CFPD
15		2	20 PSIG	3310000 CFPD
20		2	20 PSIG	3310000 CFPD
25		2	20 PSIG	3310000 CFPD
30		2	20 PSIG	3310000 CFPD

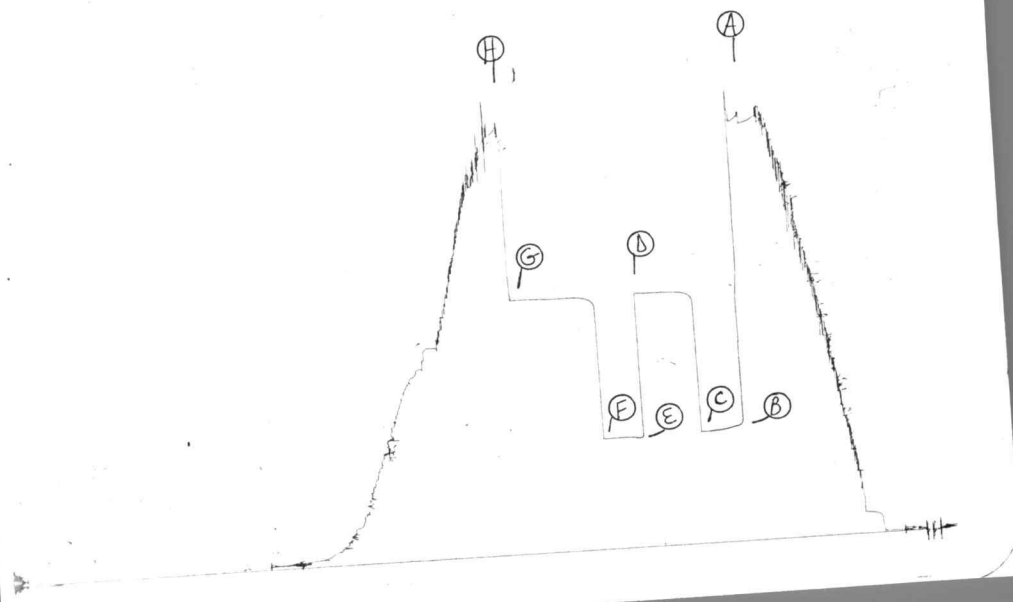
SECOND FLOW

5	PETO	2	17 PSIG	3020000 CFPD
10		2	18 PSIG	3120000 CFPD
15		2	16 PSIG	2930000 CFPD
20		2	16 PSIG	2930000 CFPD
25		2	17 PSIG	3020000 CFPD
30		2	18 PSIG	3120000 CFPD

GAS BOTTLE SN #: 106  
DATE BOTTLE FILLED: 5/20/83  
DATE TO BE INVOICED: 5/20/83

TKT # 18958

I



WESTERN TESTING COMPANY  
SUBSURFACE PRESSURE SURVEY

DATE: 5/20/83	TICKET #18959
CUSTOMER: WHITE & ELLIS DRILLING INC.	LEASE: WERNER
WELL: 2	TEST: 3
ELEVATION (KB): 1452	FORMATION: MISSISSIPPI
SECTION: 23	TOWNSHIP: 32S
RANGE: 10W	COUNTY: BARBER
GAUGE SN #1566	RANGE: 4300
	STATE: KANSAS
	CLOCK: 12

INTERVAL TEST FROM: 4380	FT	TO: 4387	FT	TOTAL DEPTH: 4387	FT
DEPTH OF SELECTIVE ZONE:					FT
PACKER DEPTH: 4375	FT	SIZE: 6 5/8	IN	PACKER DEPTH: 4380	FT
PACKER DEPTH:	FT	SIZE:	IN	PACKER DEPTH:	FT
				SIZE: 6 5/8	IN
				SIZE:	IN

DRILLING CONTRACTOR: WHITE & ELLIS			
MUD TYPE: STARCH	VISCOSITY: 42		
WEIGHT: 9.7+	WATER LOSS (CC): 11.2		
CHLORIDES (P.P.M.): 29000			
JARS - MAKE:	SERIAL NUMBER:		
DID WELL FLOW? NO	REVERSED OUT? NO		
DRILL COLLAR LENGTH: 335	FT	I.D.: 2.2	IN
WEIGHT PIPE LENGTH:	FT	I.D.:	IN
DRILL PIPE LENGTH: 4020	FT	I.D.: 3.8	IN
TEST TOOL LENGTH: 25	FT	TOOL SIZE: 5 1/2	IN
ANCHOR LENGTH: 7	FT	SIZE: 5 1/2	IN
SURFACE CHOKE SIZE: 3/4	IN	BOTTOM CHOKE SIZE: 3/4	IN
MAIN HOLE SIZE: 7 7/8	IN	TOOL JOINT SIZE: 4 1/2 XH	IN

BLOW: WEAK BLOW-DEAD IN 3 MINUTES-FLUSHED TOOL-DEAD IN 2 MINUTES INITIAL FLOW PERIOD.  
WEAK BLOW DEAD IN 1 MINUTE-FLUSHED TOOL-DEAD IN 2 MINUTES FINAL FLOW PERIOD.

RECOVERED: 65	FT	OF: DRILLING MUD
RECOVERED:	FT	OF:
RECOVERED:	FT	OF:
RECOVERED:	FT	OF:
RECOVERED:	FT	OF:
RECOVERED:	FT	OF:
RECOVERED:	FT	OF:
RECOVERED:	FT	OF:
RECOVERED:	FT	OF:

REMARKS:

TIME SET PACKER(S): 7:45 PM	TIME STARTED OFF BOTTOM: 8:50 PM
WELL TEMPERATURE: 122 °F	
INITIAL HYDROSTATIC PRESSURE:	(A) 2273 PSI
INITIAL FLOW PERIOD	MIN: 20 (B) 47 PSI TO (C) 54 PSI
INITIAL CLOSED IN PERIOD	MIN: 15 (D) 238 PSI
FINAL FLOW PERIOD	MIN: 15 (E) 63 PSI TO (F) 63 PSI
FINAL CLOSED IN PERIOD	MIN: 15 (G) 127 PSI
FINAL HYDROSTATIC PRESSURE	(H) 2273 PSI



TKT # 18959

I

