

# KANSAS DRILLERS LOG

API No. 15

NA 119

10169

County

Number

Operator

Diamond Shamrock Corporation

Address

P O Box 631

Well No.

1

Lease Name

Mary J. Reimer et al

Footage Location

1250

feet from (N) (S) line

1250

feet from (E) (W) line

Principal Contractor

D & M Drilling Co. Inc

Geologist

Spud Date

1-25-60

Total Depth

5750'

P.B.T.D.

Date Completed

3-30-60

Oil Purchaser

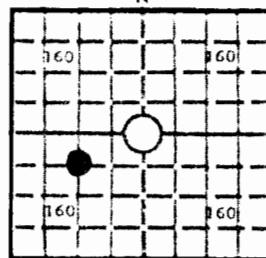
Panhandle Eastern

S. 34 T. 32S R. 27W

Loc. 1250' FSL & 1250' FWL

County Meade

640 Acres  
N



Locate well correctly

2425

Elev.: Gr.

2433

KB 2435

## CASING RECORD

Report of all strings set — surface, intermediate, production, etc.

Purpose of string	Size hole drilled	Size casing set (in O.D.)	Weight lbs/ft.	Setting depth	Type cement	Sacks	Type and percent additives
Surface	12 1/4"	9 5/8"	32#	1,543'	Pozmix	900	Calcium 2% Chloride
Production	7 7/8"	4 1/2"	9.5#	5,748'	Trinity Inferno	100	

## LINER RECORD

## PERFORATION RECORD

Top, ft.	Bottom, ft.	Sacks cement	Shots per ft.	Size & type	Depth interval
			2		5628-5636

## TUBING RECORD

Size	Setting depth	Packer set at
2 3/8	5716	

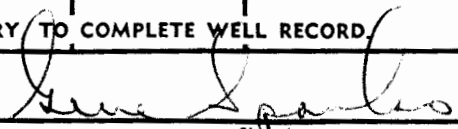
## ACID, FRACTURE, SHOT, CEMENT SQUEEZE RECORD

Amount and kind of material used	Depth interval treated
Treated w/500 gallons clean up acid. Fraced w/ 15,000 gallons gelled 3% acid w/7000# 20-40 sand.	5628-5636

## INITIAL PRODUCTION

Date of first production		Producing method (flowing, pumping, gas lift, etc.)			
6-27-60		flowing			
RATE OF PRODUCTION PER 24 HOURS	Oil	Gas	Water	Gas-oil ratio	
	8.12 bbls.	798 MCF	2.3 bbls.	98,000	CFPB
Disposition of gas (vented, used on lease or sold)			Producing interval(s)		
Sold			5628-5636		

INSTRUCTIONS: As provided in KCC Rule 82-2-125, within 90 days after completion of a well, one completed copy of this Drillers Log shall be transmitted to the State Geological Survey of Kansas, 4150 Monroe Street, Wichita, Kansas 67209. Copies of this form are available from the Conservation Division, State Corporation Commission, 3830 So. Meridian (P.O. Box 17027), Wichita, Kansas 66217. Phone AC 316-522-2206. If confidential custody is desired, please note Rule 82-2-125. Drillers Logs will be on open file in the Oil and Gas Division, State Geological Survey of Kansas, Lawrence, Kansas 66044.

Operator Diamond Shamrock Corporation		DESIGNATE TYPE OF COMP.: OIL, GAS, DRY HOLE, SWDW, ETC.: gas	
Well No. 1	Lease Name Mary J. Reimer et al		
S <u>34</u> T <u>32</u> S <u>R 27</u> <sup>XX</sup> <sub>W</sub>			
<b>WELL LOG</b>		SHOW GEOLOGICAL MARKERS, LOGS RUN, OR OTHER DESCRIPTIVE INFORMATION.	
Show all important zones of porosity and contents thereof; cored intervals, and all drill-stem tests, including depth interval tested, cushion used, time tool open, flowing and shut-in pressures, and recoveries.			
FORMATION DESCRIPTION, CONTENTS, ETC.	TOP	BOTTOM	NAME      DEPTH
Con Grove			Con Grove      3017
Toronto			Toronto      4436
Lansing			Lansing      4592
Drum			Drum      4846
Marmaton			Marmaton      5194
NPE			NPE      5251
Chero			Chero      5339
Morrow			Morrow      5619
Morrow Sand			Morrow Sand      5627
Miss			Miss      5655
USE ADDITIONAL SHEETS, IF NECESSARY TO COMPLETE WELL RECORD.			
Date Received	<div style="text-align: center;">             Signature            Manager of Drlg &amp; Prod Operations Mid-            Title      Continent Division            September 27, 1979            Date         </div>		