



WESTERN TESTING CO., INC.
FORMATION TESTING

TICKET N^o 3900

P. O. BOX 1599 PHONE (316) 838-0601
WICHITA, KANSAS 67201

Elevation 1453 KB Formation Stalwaker Eff. Pay _____ Ft.

District Augusta Date 20 Oct 79 Customer Order No. _____

COMPANY NAME Texas Oil & Gas

ADDRESS _____

LEASE AND WELL NO. Robinson "C" #1 COUNTY Harper STATE Kan Sec. 30 Twp. 32S Rge. 8W

Mail Invoice To Same Co. Name _____ Address _____ No. Copies Requested 1

Mail Charts To Same Address 4 Wichita - 1 Dallas No. Copies Requested 5

Formation Test No. 1 Interval Tested from 3665 ft. to 3694 ft. Total Depth 3736 ft.
Packer Depth 3660 ft. Size 6 3/4 in. Packer Depth 3694 ft. Size 6 3/4 in.
Packer Depth 3665 ft. Size 6 3/4 in. Packer Depth _____ ft. Size _____ in.
Depth of Selective Zone Set _____

Top Recorder Depth (Inside) 3677 ft. Recorder Number 1558 Cap. 4200
Bottom Recorder Depth (Outside) 3680 ft. Recorder Number 1559 Cap. 4200
Below Straddle Recorder Depth 3724 ft. Recorder Number 2 Cap. WTC

Drilling Contractor Slawson #4 Drill Collar Length 372' I. D. 2 1/4 in.
Mud Type Pemix-Drupac Viscosity 48 Weight Pipe Length _____ I. D. _____ in.
Weight 9.1 Water Loss 13.2 cc. Drill Pipe Length 3294' I. D. 3.8 in.
Chlorides 20,000 P.P.M. Test Tool Length 70 ft. Tool Size 5 1/2 in.
Jars: Make WTC Serial Number 407 Anchor Length 29 ft. Size 5 1/2 in.
Did Well Flow? gas Reversed Out NO Surface Choke Size 3/4 in. Bottom Choke Size 3/4 in.
Main Hole Size 7 7/8 in. Tool Joint Size 4 1/2 FH in.

Blow: strong blow with gas to surface in 2 minutes / reopened tool at 6:15

Recovered 20 ft. of water (muddy)
Recovered _____ ft. of _____
Recovered _____ ft. of _____
Recovered _____ ft. of _____
Recovered _____ ft. of _____

Remarks: gaged gas at well on side static before gage needle tyried off
gas gaged 12,300,000 cubic feet per day when in hydraulic tool
to go to floor gas on 2" Penon to close to residence in attic

Time Set	Packer(s)	A.M.	Time Started	Off Bottom	A.M.	Maximum Temperature
Initial Hydrostatic Pressure	<u>5:20</u>	<u>PM</u>	<u>8:15</u>	<u>PM</u>	<u>119°</u>	
Initial Flow Period	Minutes <u>15</u>	(A) <u>1782</u>	P.S.I.	(B) <u>828</u>	P.S.I. to (C) <u>1048</u>	P.S.I.
Initial Closed In Period	Minutes <u>30</u>	(D) <u>1529</u>	P.S.I.	(E) <u>964</u>	P.S.I. to (F) <u>1100</u>	P.S.I.
Final Flow Period	Minutes <u>15</u>	(G) <u>1561</u>	P.S.I.	(H) <u>1719</u>	P.S.I.	
Final Closed In Period	Minutes <u>00</u>					
Final Hydrostatic Pressure						

COMPANY TERMS

Western Testing Co., Inc. shall not be liable for damages of any kind to the property or personnel of the one for whom a test is made or for any loss suffered or sustained directly or indirectly through the use of its equipment, of its statements or opinion concerning the results of any test. Tools lost or damaged in the hole shall be paid at cost by the party for whom the test is made.

All charges subject to 12% interest after 60 days from date of invoice. Any expense incurred for collection will be added to the original amount.

Test Approved By [Signature]
Signature of Customer or his authorized representative

Western Representative WK Hager Thank You!

FIELD INVOICE

Open Hole Test	\$ <u>500.00</u>
Misrun	\$ _____
Straddle Test	\$ <u>250.00</u>
Jars	\$ <u>275.00</u>
Selective Zone	\$ _____
Safety Joint	\$ <u>35.00</u>
Standby	\$ _____
Evaluation	\$ _____
Extra Packer	\$ <u>175.00</u>
Circ. Sub.	\$ _____
Mileage	\$ _____
Fluid Sampler	\$ _____
Extra Charts	\$ _____

TOTAL OK \$ 1235.00

WESTERN TESTING CO., INC.
Pressure Data

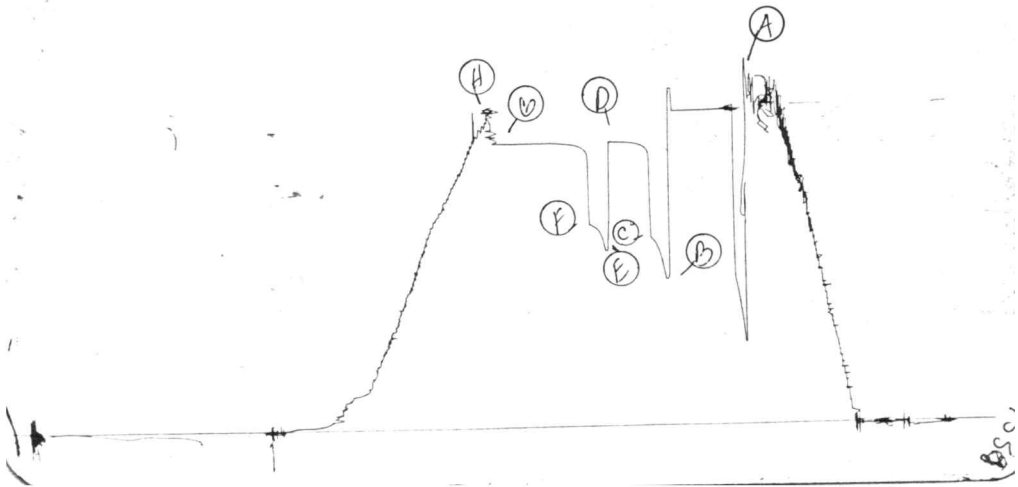
Date 10-20-79 Test Ticket No. 3900
 Recorder No. 1558 Capacity 4500 Location 3677 Ft.
 Clock No. _____ Elevation 1453 KB Well Temperature 119 °F

Point	Pressure		Time Given	Time Computed
A Initial Hydrostatic Mud	<u>1772</u> P.S.I.	Open Tool	<u>5:20</u> A.M.	
B First Initial Flow Pressure	<u>814</u> P.S.I.	First Flow Pressure	<u>15</u> Mins.	<u>15</u> Mins.
C First Final Flow Pressure	<u>1019</u> P.S.I.	Initial Closed-in Pressure	<u>30</u> Mins.	<u>30</u> Mins.
D Initial Closed-in Pressure	<u>1536</u> P.S.I.	Second Flow Pressure	<u>15</u> Mins.	<u>15</u> Mins.
E Second Initial Flow Pressure	<u>952</u> P.S.I.	Final Closed-in Pressure	<u>60</u> Mins.	<u>60</u> Mins.
F Second Final Flow Pressure	<u>1092</u> P.S.I.			
G Final Closed-in Pressure	<u>1534</u> P.S.I.			
H Final Hydrostatic Mud	<u>1715</u> P.S.I.			

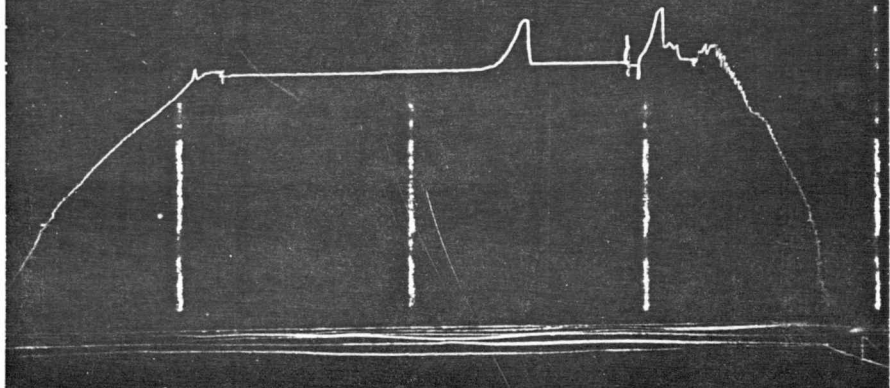
PRESSURE BREAKDOWN

First Flow Pressure		Initial Shut-In		Second Flow Pressure		Final Shut-In	
Breakdown: <u>3</u> Inc.		Breakdown: <u>10</u> Inc.		Breakdown: <u>3</u> Inc.		Breakdown: <u>22</u> Inc.	
of <u>5</u> mins. and a		of <u>3</u> mins. and a		of <u>5</u> mins. and a		of <u>3</u> mins. and a	
final inc. of <u>0</u> Min.		final inc. of <u>0</u> Min.		final inc. of <u>0</u> Min.		final inc. of <u>0</u> Min.	
Point Mins.	Press.	Point Minutes	Press.	Point Minutes	Press.	Point Minutes	Press.
P 1	<u>0</u>	<u>0</u>	<u>1019</u>	<u>0</u>	<u>952</u>	<u>0</u>	<u>1092</u>
P 2	<u>5</u>	<u>3</u>	<u>1490</u>	<u>5</u>	<u>1033</u>	<u>3</u>	<u>1492</u>
P 3	<u>10</u>	<u>6</u>	<u>1513</u>	<u>10</u>	<u>1180</u>	<u>6</u>	<u>1511</u>
P 4	<u>15</u>	<u>9</u>	<u>1523</u>	<u>15</u>	<u>1092</u>	<u>9</u>	<u>1517</u>
P 5	<u>20</u>	<u>12</u>	<u>1529</u>	<u>20</u>		<u>12</u>	<u>1523</u>
P 6	<u>25</u>	<u>15</u>	<u>1532</u>	<u>25</u>		<u>15</u>	<u>1527</u>
P 7	<u>30</u>	<u>18</u>	<u>1533</u>	<u>30</u>		<u>18</u>	<u>1529</u>
P 8	<u>35</u>	<u>21</u>	<u>1534</u>	<u>35</u>		<u>21</u>	<u>1530</u>
P 9	<u>40</u>	<u>24</u>	<u>1534</u>	<u>40</u>		<u>24</u>	<u>1532</u>
P10	<u>45</u>	<u>27</u>	<u>1535</u>	<u>45</u>		<u>27</u>	<u>1533</u>
P11	<u>50</u>	<u>30</u>	<u>1536</u>	<u>50</u>		<u>30</u>	<u>1534</u>
P12	<u>55</u>	<u>33</u>		<u>55</u>		<u>33</u>	
P13	<u>60</u>	<u>36</u>		<u>60</u>		<u>36</u>	
P14		<u>39</u>		<u>65</u>		<u>39</u>	
P15		<u>42</u>		<u>70</u>		<u>42</u>	
P16		<u>45</u>		<u>75</u>		<u>45</u>	
P17		<u>48</u>		<u>80</u>		<u>48</u>	
P18		<u>51</u>		<u>85</u>		<u>51</u>	
P19		<u>54</u>		<u>90</u>		<u>54</u>	
P20		<u>57</u>				<u>57</u>	
		<u>60</u>				<u>60</u>	
						<u>63</u>	
						<u>66</u>	
							<u>1534</u>

TKL # 3900
FI



11.3900
Below Straddle



Company Texas Oil & Gas Corporation Lease & Well No. Robinson "C" #1
 Elevation 1453 Kelly Bushing Stalnaker Formation --- Effective Pay --- Ft. Ticket No. 3900
 Date 10/20/79 Sec. 30 Twp. 32S Range 8W County Harper State Kansas
 Test Approved by K. W. Dahlberg Western Representative W. K. Hager

Formation Test No. 1 Interval Tested from 3665 ft. to 3694 ft. Total Depth 3736 ft.
 Packer Depth 3660 ft. Size 6 3/4 in. Packer Depth 3694 ft. Size 6 3/4 in.
 Packer Depth 3665 ft. Size 6 3/4 in. Packer Depth - ft. Size - in.
 Depth of Selective Zone Set -

Top Recorder Depth (Inside) 3677 ft. Recorder Number 1558 Cap. 4200
 Bottom Recorder Depth (Outside) 3680 ft. Recorder Number 1559 Cap. 4200
 Below Straddle Recorder Depth 3724 ft. Recorder Number 2 Cap. WTC

Drilling Contractor Slawson Drilling Rig #4 Drill Collar Length 372 I. D. 2 1/4 in.
 Mud Type premix-driscopac Viscosity 48 Weight Pipe Length - I. D. - in.
 Weight 9.1 Water Loss 13.2 cc. Drill Pipe Length 3294 I. D. 3.8 in.
 Chlorides 20,000 P.P.M. Test Tool Length 70 ft. Tool Size 5 1/2 in.
 Jars: Make WTC Serial Number 407 Anchor Length 29 ft. Size 5 1/2 in.
 Did Well Flow? Gas Reversed Out No Surface Choke Size 3/4 in. Bottom Choke Size 3/4 in.
 Main Hole Size 7 7/8 in. Tool Joint Size 4 1/2 FH in.

Blow: Strong blow with gas to surface in two minutes/reopened tool at 6:15

Recovered 20 ft. of water (muddy)
 Recovered ft. of
 Recovered ft. of
 Recovered ft. of
 Recovered ft. of

Remarks: Gauged gas at 60 lbs. on side static before gauge needle twisted off. Gas gauged 12,300,000 CFPD, Shut-in hydraulic tool so as to flair gas on 2" . Reason too close to residence in Attica.

Time Set Packer(s) 5:20 ~~P.M.~~ ^{A.M.} Time Started Off Bottom 8:15 ~~P.M.~~ ^{A.M.} Maximum Temperature 119⁰
 Initial Hydrostatic Pressure (A) 1772 P.S.I.
 Initial Flow Period Minutes 15 (B) 814 P.S.I. to (C) 1019 P.S.I.
 Initial Closed In Period Minutes 30 (D) 1536 P.S.I.
 Final Flow Period Minutes 15 (E) 952 P.S.I. to (F) 1092 P.S.I.
 Final Closed In Period Minutes 60 (G) 1534 P.S.I.
 Final Hydrostatic Pressure (H) 1715 P.S.I.

WESTERN TESTING CO., INC.

Pressure Data

Date 10/20/79 Test Ticket No. 3900
 Recorder No. 1558 Capacity 4200 Location 3677 Ft.
 Clock No. -- Elevation 1453 Kelly Bushing Well Temperature 119 °F

Point	Pressure		Time Given	Time Computed
A Initial Hydrostatic Mud	1772	P.S.I.	5:20A	M
B First Initial Flow Pressure	814	P.S.I.	15	Mins.
C First Final Flow Pressure	1019	P.S.I.	30	Mins.
D Initial Closed-in Pressure	1536	P.S.I.	15	Mins.
E Second Initial Flow Pressure	952	P.S.I.	60	Mins.
F Second Final Flow Pressure	1092	P.S.I.		
G Final Closed-in Pressure	1534	P.S.I.		
H Final Hydrostatic Mud	1715	P.S.I.		

PRESSURE BREAKDOWN

First Flow Pressure		Initial Shut-In		Second Flow Pressure		Final Shut-In	
Breakdown: <u>3</u> Inc.		Breakdown: <u>10</u> Inc.		Breakdown: <u>3</u> Inc.		Breakdown: <u>22</u> Inc.	
of <u>5</u> mins. and a		of <u>3</u> mins. and a		of <u>5</u> mins. and a		of <u>3</u> mins. and a	
final inc. of <u>0</u> Min.		final inc. of <u>0</u> Min.		final inc. of <u>0</u> Min.		final inc. of <u>0</u> Min.	
Point Mins.	Press.	Point Minutes	Press.	Point Minutes	Press.	Point Minutes	Press.
P 1	0	0	1019	0	952	0	1092
P 2	5	3	1490	5	1033	3	1492
P 3	10	6	1513	10	1180	6	1511
P 4	15	9	1523	15	1092	9	1517
P 5		12	1529			12	1523
P 6		15	1532			15	1527
P 7		18	1533			18	1529
P 8		21	1534			21	1530
P 9		24	1534			24	1532
P10		27	1535			27	1533
P11		30	1536			30	1534
P12						33	1534
P13						36	1534
P14						39	1534
P15						42	1534
P16						45	1534
P17						48	1534
P18						51	1534
P19						54	1534
P20						57	1534
						60	1534
						63	1534
						66	1534



WESTERN TESTING CO., INC.
FORMATION TESTING

TICKET NO 3910

P. O. BOX 1599 WICHITA, KANSAS 67201
PHONE (316) 838-0601

Elevation 1453 K.B Formation Swope line Eff. Pay Ft.

District Great Bend Date 10-23-79 Customer Order No.

COMPANY NAME Texas Oil & Gas Corp.

ADDRESS 200 W. Douglas Suite 300 Wichita Ks 67202

LEASE AND WELL NO. Robinson "C" #1 COUNTY Harper STATE Kansas Sec. 30 Twp. 32 S Rge. 8 W

Mail Invoice To Co. Name T.X.O. Address Wichita No. Copies Requested 4

Mail Charts To Texas Oil & Gas Corp 2700 Fidelity Union Tower Dallas Texas 75201 No. Copies Requested 1

Formation Test No. 2 Interval Tested from 4084 ft. to 4120 ft. Total Depth 4120 ft.
Packer Depth 4179 ft. Size 6 3/4 in. Packer Depth 4184 ft. Size 6 3/4 in.
Packer Depth - ft. Size - in. Packer Depth - ft. Size - in.
Depth of Selective Zone Set - - -

Top Recorder Depth (Inside) 4107 ft. Recorder Number 1564 Cap. 3150
Bottom Recorder Depth (Outside) 4110 ft. Recorder Number 3085 Cap. 4500
Below Straddle Recorder Depth - ft. Recorder Number - Cap. -

Drilling Contractor Slawson Drlg Co Rig #4 Drill Collar Length 373 I. D. 2 1/4 in.
Mud Type Drispac Viscosity 46 Weight Pipe Length - I. D. - in.
Weight 9.2 Water Loss 16.8 cc. Drill Pipe Length 3679 I. D. 3.8 in.
Chlorides 17,000 P.P.M. Test Tool Length 32 ft. Tool Size 5 1/2 in.
Jars: Make W.T.C Serial Number 406 Anchor Length 36 ft. Size 5 1/2 in.
Did Well Flow? NO Reversed Out NO Surface Choke Size 3/4 in. Bottom Choke Size 3/4 in.
Main Hole Size 7 7/8 in. Tool Joint Size 4 1/2 FH in.

Blow: Weak 1/2" Blow Through Out Flow Periods

Recovered 120 ft. of Drlg Mud

Recovered ft. of

Recovered ft. of

Recovered ft. of

Recovered ft. of

Remarks:

Time Set Packer(s) 12:42 A.M. P.M. Time Started Off Bottom 4:30 A.M. P.M. Maximum Temperature 122°
Initial Hydrostatic Pressure (A) 2000 P.S.I.
Initial Flow Period Minutes 30 (B) 46 P.S.I. to (C) 62 P.S.I.
Initial Closed In Period Minutes 60 (D) 1616 P.S.I.
Final Flow Period Minutes 45 (E) 77 P.S.I. to (F) 93 P.S.I.
Final Closed In Period Minutes 90 (G) 1608 P.S.I.
Final Hydrostatic Pressure (H) 1996 P.S.I.

COMPANY TERMS

Western Testing Co., Inc. shall not be liable for damages of any kind to the property or personnel of the one for whom a test is made or for any loss suffered or sustained directly or indirectly through the use of its equipment, of its statements or opinion concerning the results of any test. Tools lost or damaged in the hole shall be paid at cost by the party for whom the test is made.

All charges subject to 12% interest after 60 days from date of invoice. Any expense incurred for collection will be added to the original amount.

Test Approved By [Signature] Signature of Customer or his authorized representative

Western Representative [Signature] Thank you

FIELD INVOICE

Table with 2 columns: Item and Amount. Items include Open Hole Test (\$550.00), Safety Joint (\$35.00), and TOTAL (\$860.00).

WESTERN TESTING CO., INC.
Pressure Data

Date 10-23-79 Test Ticket No. 3910
 Recorder No. 1564 Capacity 3150 Location 4107 Ft.
 Clock No. _____ Elevation 1453 KB Well Temperature 122 °F

Point	Pressure		Time Given	Time Computed
A Initial Hydrostatic Mud	<u>2024</u> 2024	P.S.I.	<u>12:42</u> A.M.	
B First Initial Flow Pressure	<u>50</u>	P.S.I.	<u>30</u> Mins.	<u>30</u> Mins.
C First Final Flow Pressure	<u>65</u>	P.S.I.	<u>60</u> Mins.	<u>60</u> Mins.
D Initial Closed-in Pressure	<u>1627</u>	P.S.I.	<u>45</u> Mins.	<u>45</u> Mins.
E Second Initial Flow Pressure	<u>81</u>	P.S.I.	<u>90</u> Mins.	<u>87</u> Mins.
F Second Final Flow Pressure	<u>95</u>	P.S.I.		
G Final Closed-in Pressure	<u>1618</u>	P.S.I.		
H Final Hydrostatic Mud	<u>1998</u> 2024	P.S.I.		

PRESSURE BREAKDOWN

Point Mins.	First Flow Pressure		Initial Shut-In		Second Flow Pressure		Final Shut-In	
	Breakdown:	Inc.	Breakdown:	Inc.	Breakdown:	Inc.	Breakdown:	Inc.
	of <u>6</u> mins. and a		of <u>3</u> mins. and a		of <u>9</u> mins. and a		of <u>29</u> mins. and a	
	final inc. of <u>0</u> Min.		final inc. of <u>0</u> Min.		final inc. of <u>0</u> Min.		final inc. of <u>0</u> Min.	
Point Mins.	Press.	Point Minutes	Press.	Point Minutes	Press.	Point Minutes	Press.	
P 1	<u>50</u>	0	<u>65</u>	0	<u>81</u>	0	<u>95</u>	
P 2	<u>53</u>	3	<u>76</u>	3	<u>81</u>	3	<u>98</u>	
P 3	<u>54</u>	6	<u>113</u>	6	<u>81</u>	6	<u>113</u>	
P 4	<u>57</u>	9	<u>215</u>	9	<u>83</u>	9	<u>149</u>	
P 5	<u>59</u>	12	<u>447</u>	12	<u>85</u>	12	<u>216</u>	
P 6	<u>62</u>	15	<u>862</u>	15	<u>87</u>	15	<u>336</u>	
P 7	<u>65</u>	18	<u>1101</u>	18	<u>88</u>	18	<u>516</u>	
P 8		21	<u>1261</u>	21	<u>90</u>	21	<u>742</u>	
P 9		24	<u>1357</u>	24	<u>93</u>	24	<u>1014</u>	
P10		27	<u>1417</u>	27	<u>95</u>	27	<u>1179</u>	
P11		30	<u>1463</u>	30		30	<u>1273</u>	
P12		33	<u>1498</u>	33		33	<u>1341</u>	
P13		36	<u>1527</u>	36		36	<u>1390</u>	
P14		39	<u>1547</u>	39		39	<u>1430</u>	
P15		42	<u>1567</u>	42		42	<u>1455</u>	
P16		45	<u>1583</u>	45		45	<u>1479</u>	
P17		48	<u>1597</u>	48		48	<u>1498</u>	
P18		51	<u>1610</u>	51		51	<u>1514</u>	
P19		54	<u>1618</u>	54		54	<u>1527</u>	
P20		57	<u>7627</u>	57		57	<u>1541</u>	
		60		60		60	<u>1554</u>	

(cont)

WESTERN TESTING CO., INC.
Pressure Data

Test Ticket No. 3910

Order No. _____ Capacity _____ Location _____

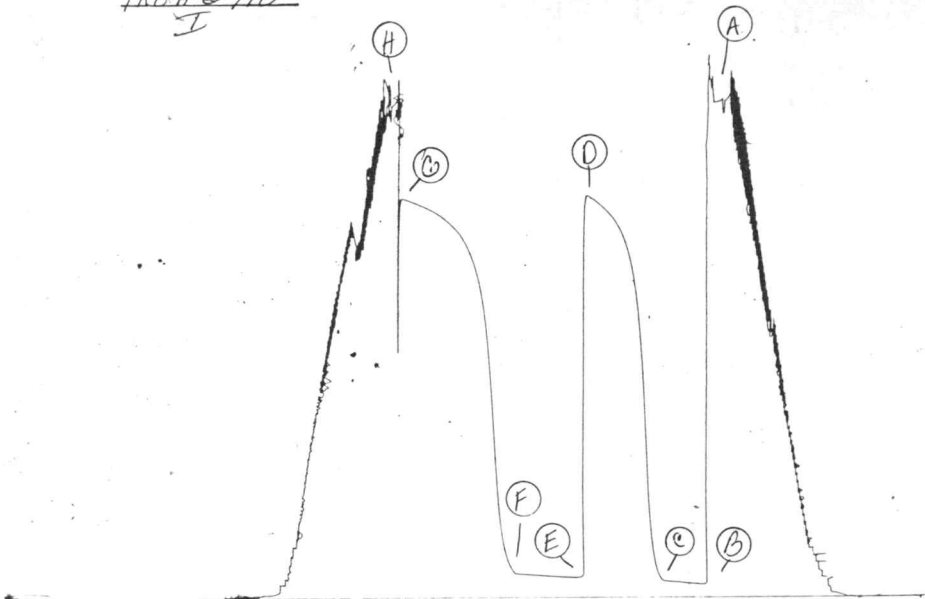
Well No. _____ Elevation _____ Well Temperature _____

Point	Pressure	Open Tool	Time Given	Time Computed
Initial Hydrostatic Mud	_____ P.S.I.	_____	_____ M	_____
First Initial Flow Pressure	_____ P.S.I.	First Flow Pressure	_____ Mins.	_____ Min
First Final Flow Pressure	_____ P.S.I.	Initial Closed-in Pressure	_____ Mins.	_____ Min
Initial Closed-in Pressure	_____ P.S.I.	Second Flow Pressure	_____ Mins.	_____ Min
Second Initial Flow Pressure	_____ P.S.I.	Final Closed-in Pressure	_____ Mins.	_____ Min
Second Final Flow Pressure	_____ P.S.I.			
Final Closed-in Pressure	_____ P.S.I.			
Final Hydrostatic Mud	_____ P.S.I.			

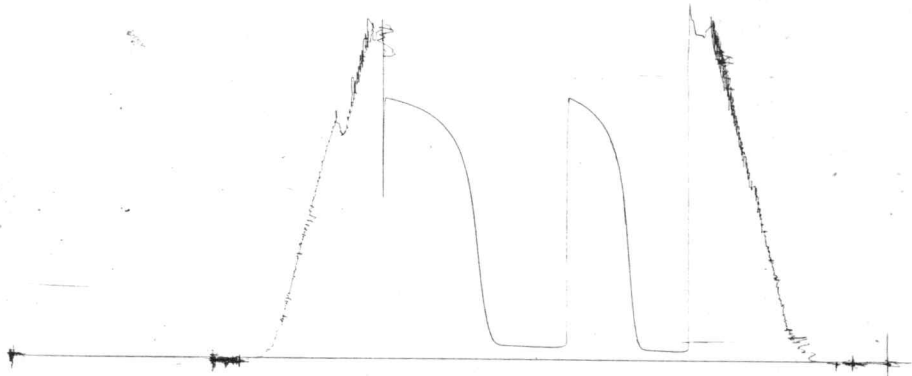
PRESSURE BREAKDOWN

Point ins.	First Flow Pressure		Initial Shut-In		Second Flow Pressure		Final Shut-In	
	Breakdown: _____ Inc.	of _____ mins. and a final inc. of _____ Min.	Breakdown: _____ Inc.	of _____ mins. and a final inc. of _____ Min.	Breakdown: _____ Inc.	of _____ mins. and a final inc. of _____ Min.	Breakdown: _____ Inc.	of _____ mins. and a final inc. of _____ Min.
	Press.	Point Minutes	Press.	Point Minutes	Press.	Point Minutes	Press.	Point Minutes
1	_____	63	_____	63	_____	63	1564	63
2	_____	66	_____	66	_____	66	1573	66
3	_____	69	_____	69	_____	69	1581	69
4	_____	72	_____	72	_____	72	1587	72
5	_____	75	_____	75	_____	75	1594	75
6	_____	78	_____	78	_____	78	1602	78
7	_____	81	_____	81	_____	81	1608	81
8	_____	84	_____	84	_____	84	1613	84
9	_____	87	_____	87	_____	87	1618	87
10	_____	90	_____	90	_____	90		90
11	_____	93	_____	93	_____	93		93
12	_____	96	_____	96	_____	96		96
13	_____	99	_____	99	_____	99		99
14	_____	102	_____	102	_____	102		102
15	_____	105	_____	105	_____	105		105
16	_____	108	_____	108	_____	108		108
17	_____	111	_____	111	_____	111		111
18	_____	114	_____	114	_____	114		114
19	_____	117	_____	117	_____	117		117
20	_____	120	_____	120	_____	120		120

TKL #3910
I



TKt # 3912
0



2085

Company Texas Oil & Gas Corporation Lease & Well No. Robinson "C" #1
 Elevation 1453 Kelly Bushing Formation Swopeline Effective Pay -- Ft. Ticket No. 3910
 Date 10/23/79 Sec. 30 Twp. 32S Range 8W County Harper State Kansas
 Test Approved by K. W. Dahlberg Western Representative Max Knipe

Formation Test No. 2 Interval Tested from 4084 ft. to 4120 ft. Total Depth 4120 ft.
 Packer Depth 4179 ft. Size 6 3/4 in. Packer Depth 4184 ft. Size 6 3/4 in.
 Packer Depth - ft. Size - in. Packer Depth - ft. Size - in.

Depth of Selective Zone Set -
 Top Recorder Depth (Inside) 4107 ft. Recorder Number 1564 Cap. 3150
 Bottom Recorder Depth (Outside) 4110 ft. Recorder Number 3085 Cap. 4500
 Below Straddle Recorder Depth - ft. Recorder Number - Cap. -
 Drilling Contractor Slawson Drilling Co. Rig #4 Drill Collar Length 373 I. D. 2 1/4 in.
 Mud Type drispac Viscosity 46 Weight Pipe Length - I. D. - in.
 Weight 9.2 Water Loss 16.8 cc. Drill Pipe Length 3679 I. D. 3.8 in.
 Chlorides 17,000 P.P.M. Test Tool Length 32 ft. Tool Size 5 1/2 in.
 Jars: Make WTC Serial Number 406 Anchor Length 36 ft. Size 5 1/2 in.
 Did Well Flow? No Reversed Out No Surface Choke Size 3/4 in. Bottom Choke Size 3/4 in.
 Main Hole Size 7 7/8 in. Tool Joint Size 4 1/2 FH in.

Blow: Weak 1/2" blow throughout flow periods.

Recovered 120 ft. of drilling mud
 Recovered ft. of
 Recovered ft. of
 Recovered ft. of
 Recovered ft. of

Remarks:

Time Set Packer(s) 12:42 ~~P.M.~~ ^{A.M.} Time Started Off Bottom 4:30 ~~P.M.~~ ^{A.M.} Maximum Temperature 122⁰
 Initial Hydrostatic Pressure (A) 2024 P.S.I.
 Initial Flow Period Minutes 30 (B) 50 P.S.I. to (C) 65 P.S.I.
 Initial Closed In Period Minutes 60 (D) 1627 P.S.I.
 Final Flow Period Minutes 45 (E) 81 P.S.I. to (F) 95 P.S.I.
 Final Closed In Period Minutes 87 (G) 1618 P.S.I.
 Final Hydrostatic Pressure (H) 1998 P.S.I.

WESTERN TESTING CO., INC.

Pressure Data

Date 10/23/79 Test Ticket No. 3910
 Recorder No. 1564 Capacity 3150 Location 4107 Ft.
 Clock No. -- Elevation 1453 Kelly Bushing Well Temperature 122 °F

Point	Pressure		Time Given	Time Computed
A Initial Hydrostatic Mud	2024	P.S.I.	12:42A	M
B First Initial Flow Pressure	50	P.S.I.	30	Mins. 30 Mins.
C First Final Flow Pressure	65	P.S.I.	60	Mins. 60 Mins.
D Initial Closed-in Pressure	1627	P.S.I.	45	Mins. 45 Mins.
E Second Initial Flow Pressure	81	P.S.I.	90	Mins. 87 Mins.
F Second Final Flow Pressure	95	P.S.I.		
G Final Closed-in Pressure	1618	P.S.I.		
H Final Hydrostatic Mud	1998	P.S.I.		

PRESSURE BREAKDOWN

Point Mins.	First Flow Pressure		Initial Shut-In		Second Flow Pressure		Final Shut-In	
	Breakdown:	Inc.	Breakdown:	Inc.	Breakdown:	Inc.	Breakdown:	Inc.
	6		19		9		29	
	of 5 mins. and a final inc. of 0 Min.		of 3 mins. and a final inc. of 0 Min.		of 5 mins. and a final inc. of 0 Min.		of 3 mins. and a final inc. of 0 Min.	
Point Mins.	Press.	Point Minutes	Press.	Point Minutes	Press.	Point Minutes	Press.	
P 1 0	50	0	65	0	81	0	95	
P 2 5	53	3	76	5	81	3	98	
P 3 10	54	6	113	10	81	6	113	
P 4 15	57	9	215	15	83	9	149	
P 5 20	59	12	447	20	85	12	216	
P 6 25	62	15	862	25	87	15	336	
P 7 30	65	18	1101	30	88	18	516	
P 8		21	1261	35	90	21	742	
P 9		24	1357	40	93	24	1014	
P10		27	1417	45	95	27	1179	
P11		30	1463			30	1273	
P12		33	1498			33	1341	
P13		36	1527			36	1390	
P14		39	1547			39	1430	
P15		42	1567			42	1455	
P16		45	1583			45	1479	
P17		48	1597			48	1498	
P18		51	1610			51	1514	
P19		54	1618			54	1527	
P20		57	1627			57	1541	
						60	1554	

WESTERN TESTING CO., INC.
Pressure Data

Date 10/23/79 Test Ticket No. 3910
 Recorder No. 1564 Capacity 3150 Location 4107 Ft.
 Clock No. -- Elevation 1453 Kelly Bushing Well Temperature 122 °F

Point	Pressure		Time Given	Time Computed
A Initial Hydrostatic Mud	2024 P.S.I.	Open Tool	12:42A M	
B First Initial Flow Pressure	50 P.S.I.	First Flow Pressure	30 Mins.	30 Mins.
C First Final Flow Pressure	65 P.S.I.	Initial Closed-in Pressure	60 Mins.	60 Mins.
D Initial Closed-in Pressure	1627 P.S.I.	Second Flow Pressure	45 Mins.	45 Mins.
E Second Initial Flow Pressure	81 P.S.I.	Final Closed-in Pressure	90 Mins.	87 Mins.
F Second Final Flow Pressure	95 P.S.I.			
G Final Closed-in Pressure	1618 P.S.I.			
H Final Hydrostatic Mud	1998 P.S.I.			

PRESSURE BREAKDOWN

Point Mins.	First Flow Pressure	Initial Shut-In	Second Flow Pressure	Final Shut-In	
	Breakdown: <u>6</u> Inc. of <u>5</u> mins. and a final inc. of <u>0</u> Min.	Breakdown: <u>19</u> Inc. of <u>3</u> mins. and a final inc. of <u>0</u> Min.	Breakdown: <u>9</u> Inc. of <u>5</u> mins. and a final inc. of <u>0</u> Min.	Breakdown: <u>29</u> Inc. of <u>3</u> mins. and a final inc. of <u>0</u> Min.	
	Press.	Point Minutes	Press.	Point Minutes	Press.
P 1				63	1564
P 2				66	1573
P 3				69	1581
P 4				72	1587
P 5				75	1594
P 6				78	1602
P 7				81	1608
P 8				84	1613
P 9				87	1618
P10					
P11					
P12					
P13					
P14					
P15					
P16					
P17					
P18					
P19					
P20					



WESTERN TESTING CO., INC.

FORMATION TESTING

TICKET NO 3911

P. O. BOX 1599 PHONE (316) 838-0601 WICHITA, KANSAS 67201

Elevation 1453 K.B Formation Miss Eff. Pay Ft.

District Great Bend Date 10-24-79 Customer Order No.

COMPANY NAME Texas Oil & Gas Corp

ADDRESS 200 W. Douglas Suite 300 Wichita Ks 67202

LEASE AND WELL NO. Robinson #1-C COUNTY Harper STATE Kansas Sec 30 Twp 32 S Rge 8 W

Mail Invoice To Co. Name Same As Before Address No. Copies Requested 4 - Dallas

Mail Charts To Address No. Copies Requested

Formation Test No. 3 Interval Tested from 4437 ft. to 4460 ft. Total Depth 4460 ft.

Packer Depth 4432 ft. Size 6 3/4 in. Packer Depth 4437 ft. Size 6 3/4 in.

Packer Depth ft. Size in. Packer Depth ft. Size in.

Depth of Selective Zone Set

Top Recorder Depth (Inside) 4452 ft. Recorder Number 1564 Cap. 3150

Bottom Recorder Depth (Outside) 4455 ft. Recorder Number 3085 Cap. 4500

Below Straddle Recorder Depth ft. Recorder Number Cap.

Drilling Contractor Stawson Rig #4 Drill Collar Length 373 I. D. 2 1/4 in.

Mud Type Drispag Viscosity 42 Weight Pipe Length I. D. in.

Weight 1.2 Water Loss 12.6 cc. Drill Pipe Length 4032 I. D. in.

Chlorides 15000 P.P.M. Test Tool Length 32 ft. Tool Size 5 1/2 in.

Jars: Make W.T.C. Serial Number 406 Anchor Length 23 ft. Size 5 1/2 in.

Did Well Flow? Reversed Out Surface Choke Size 3/4 in. Bottom Choke Size 3/4 in.

Main Hole Size 7 1/8 in. Tool Joint Size 4 1/2 FH in.

Blow:

Recovered ft. of

Recovered ft. of

Recovered ft. of

Recovered ft. of

Remarks: Packer Failure

Time Set Packer(s) 10:00 P.M. Time Started Off Bottom A.M. P.M. Maximum Temperature

Initial Hydrostatic Pressure (A) 2283 P.S.I.

Initial Flow Period (B) Minutes P.S.I. to (C) P.S.I.

Initial Closed In Period (D) Minutes P.S.I.

Final Flow Period (E) Minutes P.S.I. to (F) P.S.I.

Final Closed In Period (G) Minutes P.S.I.

Final Hydrostatic Pressure (H) 2254 P.S.I.

COMPANY TERMS

Western Testing Co., Inc. shall not be liable for damages of any kind to the property or personnel of the one for whom a test is made or for any loss suffered or sustained directly or indirectly through the use of its equipment, of its statements or opinion concerning the results of any test. Tools lost or damaged in the hole shall be paid at cost by the party for whom the test is made.

All charges subject to 12% interest after 60 days from date of invoice. Any expense incurred for collection will be added to the original amount.

Test Approved By K.W. Dahlberg Signature of Customer or his authorized representative

Western Representative Max Kruse

Thank you

FIELD INVOICE

Open Hole Test \$ 275.00

Misrun \$ 275.00

Straddle Test \$

Jars \$ 275.00

Selective Zone \$

Safety Joint \$ 35.00

Standby \$

Evaluation \$

Extra Packer \$

Circ. Sub. \$

Mileage \$

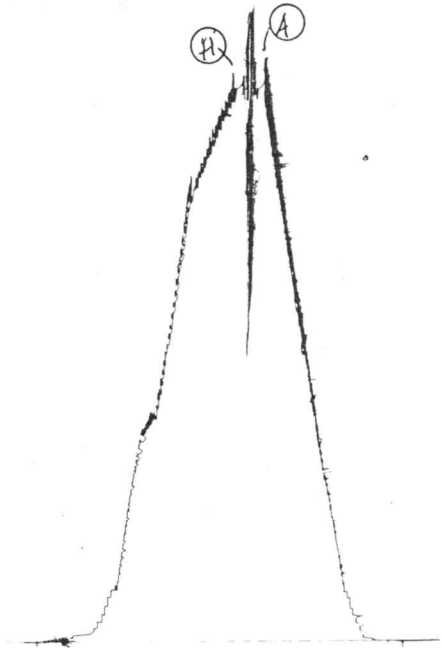
Fluid Sampler \$

Extra Charts \$

TOTAL \$ 585.00

69-51

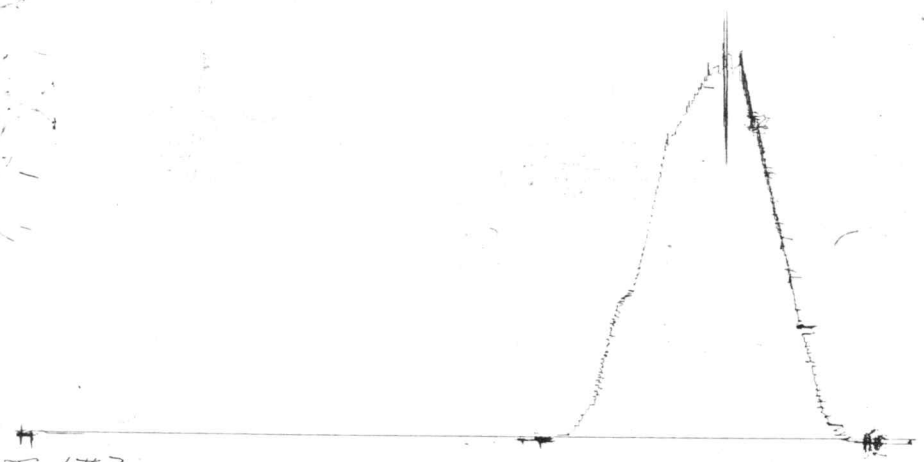
114# 3911
I



3085

TH # 3911
0

g
2
1
1



Company Texas Oil & Gas Corp. Lease & Well No. Robinson "C" #1
 Elevation 1453 Kelly Bush Formation Mississippi Effective Pay - Ft. Ticket No. 3911
 Date 10-24-79 Sec. 30 Twp. 32S Range 8W County Harper State Kansas
 Test Approved by K.W. Dahlberg Western Representative Guy M. Knipe

Formation Test No. 3 Interval Tested from 4437 ft. to 4460 ft. Total Depth 4460 ft.
 Packer Depth 4432 ft. Size 6 3/4 in. Packer Depth 4437 ft. Size 6 3/4 in.
 Packer Depth - ft. Size - in. Packer Depth - ft. Size - in.

Depth of Selective Zone Set -
 Top Recorder Depth (Inside) 4452 ft. Recorder Number 1564 Cap. 3150
 Bottom Recorder Depth (Outside) 4455 ft. Recorder Number 3085 Cap. 4500
 Below Straddle Recorder Depth - ft. Recorder Number - Cap. -

Drilling Contractor Slawson (#4) Drill Collar Length 373 I. D. 2 1/4 in.
 Mud Type Drispac Viscosity 42 Weight Pipe Length - I. D. - in.
 Weight 9.2 Water Loss 12.6 cc. Drill Pipe Length 4032 I. D. - in.
 Chlorides 15,000 P.P.M. Test Tool Length 32 ft. Tool Size 5 1/2 OD in.
 Jars: Make W.T.C. Serial Number 406 Anchor Length 23 ft. Size 5 1/2 OD in.
 Did Well Flow? No Reversed Out - Surface Choke Size 3/4 in. Bottom Choke Size 3/4 in.
 Main Hole Size 7 7/8 in. Tool Joint Size 4 1/2 FH in.

Blow: Misrun.

Recovered _____ ft. of _____
 Recovered _____ ft. of _____
 Recovered _____ ft. of _____
 Recovered _____ ft. of _____
 Recovered _____ ft. of _____

Remarks: Misrun, Packer failure

Time Set Packer(s) 10:00 ~~A.M.~~ P.M. Time Started Off Bottom -- A.M. P.M. Maximum Temperature -
 Initial Hydrostatic Pressure (A) 2283 P.S.I.
 Initial Flow Period (B) -- Minutes P.S.I. to (C) -- P.S.I.
 Initial Closed In Period (D) -- Minutes P.S.I.
 Final Flow Period (E) -- Minutes P.S.I. to (F) -- P.S.I.
 Final Closed In Period (G) -- Minutes P.S.I.
 Final Hydrostatic Pressure (H) 2254 P.S.I.



WESTERN TESTING CO., INC.

FORMATION TESTING

TICKET NO 3912

P. O. BOX 1599 PHONE (316) 838-0601 WICHITA, KANSAS 67201

Elevation 1453 K.B Formation Miss Eff. Pay Ft.

District Great Bend Date 10-25-79 Customer Order No.

COMPANY NAME Texas Oil & Gas Corp

ADDRESS 200 W. Douglas Suite 300 Wichita Kansas 67202

LEASE AND WELL NO. ROBINSON #1-C COUNTY Harper STATE Kansas Sec 30 Twp 32 N Rge 8 W

Mail Invoice To Same As Before No. Copies Requested 5

Mail Charts To Co. Name Address No. Copies Requested 5

Formation Test No. 4 Interval Tested from 4450 ft. to 4460 ft. Total Depth 4460 ft. Packer Depth 4443 ft. Size 6 3/4 in. Packer Depth 4450 ft. Size 6 3/4 in.

Top Recorder Depth (Inside) 4454 ft. Recorder Number 1564 Cap. 3150 Bottom Recorder Depth (Outside) 4457 ft. Recorder Number 3085 Cap. 4500

Drilling Contractor Slawson Drilg Rig #4 Mud Type Drispac Viscosity 42 Weight 9.2 Water Loss 12.6 cc. Chlorides 15,000 P.P.M. Jars: Make W.T.C Serial Number 406 Did Well Flow? NO Reversed Out NO

Blow: Weak for 30 minn on PreFlow - Open Tool For Second Flow Few bubbles Died Flushed Tool 20 minn into Second Flow, Very Weak for 5 minn Died

Recovered 63 ft. of Hvy Drilg Mud Remarks: Sl. Plugging Action on PreFlow

Table with columns for Time Set Packer(s), Time Started Off Bottom, Initial Hydrostatic Pressure, Initial Flow Period, Initial Closed In Period, Final Flow Period, Final Closed In Period, Final Hydrostatic Pressure. Includes handwritten values and circled 'A.M.' markers.

COMPANY TERMS

Western Testing Co., Inc. shall not be liable for damages of any kind to the property or personnel of the one for whom a test is made or for any loss suffered or sustained directly or indirectly through the use of its equipment, of its statements or opinion concerning the results of any test.

All charges subject to 12% interest after 60 days from date of invoice. Any expense incurred for collection will be added to the original amount.

Test Approved By [Signature] Signature of Customer or his authorized representative

Western Representative [Signature]

FIELD INVOICE

Table listing items and costs: Open Hole Test \$550.00, Misrun \$, Straddle Test \$, Jars \$275.00, Selective Zone \$, Safety Joint \$35.00, Standby \$, Evaluation \$, Extra Packer \$, Circ. Sub. \$, Mileage \$, Fluid Sampler \$, Extra Charts \$.

WESTERN TESTING CO., INC.

Pressure Data

Date 10-29-79 Test Ticket No. 3912
 Recorder No. 1564 Capacity 3150 Location 4454 Ft.
 Clock No. _____ Elevation 1453 X13 Well Temperature _____ °F

Point	Pressure	P.S.I.	Open Tool	Time Given	Time Computed
A Initial Hydrostatic Mud	<u>2304</u>	P.S.I.		<u>2:17 A</u> M	
B First Initial Flow Pressure	<u>42</u>	P.S.I.	First Flow Pressure	<u>30</u> Mins.	<u>30</u> Mins.
C First Final Flow Pressure	<u>146</u>	P.S.I.	Initial Closed-in Pressure	<u>60</u> Mins.	<u>63</u> Mins.
D Initial Closed-in Pressure	<u>227</u>	P.S.I.	Second Flow Pressure	<u>45</u> Mins.	<u>45</u> Mins.
E Second Initial Flow Pressure	<u>115</u>	P.S.I.	Final Closed-in Pressure	<u>90</u> Mins.	<u>90</u> Mins.
F Second Final Flow Pressure	<u>71</u>	P.S.I.			
G Final Closed-in Pressure	<u>221</u>	P.S.I.			
H Final Hydrostatic Mud	<u>2275</u>	P.S.I.			

PRESSURE BREAKDOWN

First Flow Pressure Breakdown: <u>6</u> Inc. of <u>5</u> mins. and a final inc. of <u>0</u> Min.	Initial Shut-In Breakdown: <u>31</u> Inc. of <u>3</u> mins. and a final inc. of <u>0</u> Min.	Second Flow Pressure Breakdown: <u>9</u> Inc. of <u>5</u> mins. and a final inc. of <u>0</u> Min.	Final Shut-In Breakdown: <u>30</u> Inc. of <u>3</u> mins. and a final inc. of <u>0</u> Min.
--	---	---	---

Point Mins.	Press.	Point Minutes	Press.	Point Minutes	Press.	Point Minutes	Press.
P 1	<u>0</u>	<u>0</u>	<u>146</u>	<u>0</u>	<u>115</u>	<u>0</u>	<u>71</u>
P 2	<u>5</u>	<u>3</u>	<u>91</u>	<u>5</u>	<u>93</u>	<u>3</u>	<u>73</u>
P 3	<u>10</u>	<u>6</u>	<u>92</u>	<u>10</u>	<u>73</u>	<u>6</u>	<u>74</u>
P 4	<u>15</u>	<u>9</u>	<u>96</u>	<u>15</u>	<u>74</u>	<u>9</u>	<u>77</u>
P 5	<u>20</u>	<u>12</u>	<u>102</u>	<u>20</u>	<u>77</u>	<u>12</u>	<u>81</u>
P 6	<u>25</u>	<u>15</u>	<u>108</u>	<u>25</u>	<u>74</u>	<u>15</u>	<u>84</u>
P 7	<u>30</u>	<u>18</u>	<u>113</u>	<u>30</u>	<u>71</u>	<u>18</u>	<u>87</u>
P 8	<u>35</u>	<u>21</u>	<u>118</u>	<u>35</u>	<u>70</u>	<u>21</u>	<u>90</u>
P 9	<u>40</u>	<u>24</u>	<u>124</u>	<u>40</u>	<u>71</u>	<u>24</u>	<u>93</u>
P10	<u>45</u>	<u>27</u>	<u>132</u>	<u>45</u>	<u>71</u>	<u>27</u>	<u>98</u>
P11	<u>50</u>	<u>30</u>	<u>140</u>	<u>50</u>		<u>30</u>	<u>102</u>
P12	<u>55</u>	<u>33</u>	<u>147</u>	<u>55</u>		<u>33</u>	<u>107</u>
P13	<u>60</u>	<u>36</u>	<u>154</u>	<u>60</u>		<u>36</u>	<u>112</u>
P14		<u>39</u>	<u>160</u>	<u>65</u>		<u>39</u>	<u>116</u>
P15		<u>42</u>	<u>166</u>	<u>70</u>		<u>42</u>	<u>121</u>
P16		<u>45</u>	<u>174</u>	<u>75</u>		<u>45</u>	<u>127</u>
P17		<u>48</u>	<u>182</u>	<u>80</u>		<u>48</u>	<u>132</u>
P18		<u>51</u>	<u>189</u>	<u>85</u>		<u>51</u>	<u>140</u>
P19		<u>54</u>	<u>199</u>	<u>90</u>		<u>54</u>	<u>145</u>
P20		<u>57</u>	<u>208</u>			<u>57</u>	<u>150</u>
		<u>60</u>	<u>218</u>			<u>60</u>	<u>158</u>
		<u>63</u>	<u>227</u>				

Cont'd on next page

WESTERN TESTING CO., INC.
Pressure Data

Test Ticket No. 3912

Order No. _____ Capacity _____ Location _____ Ft

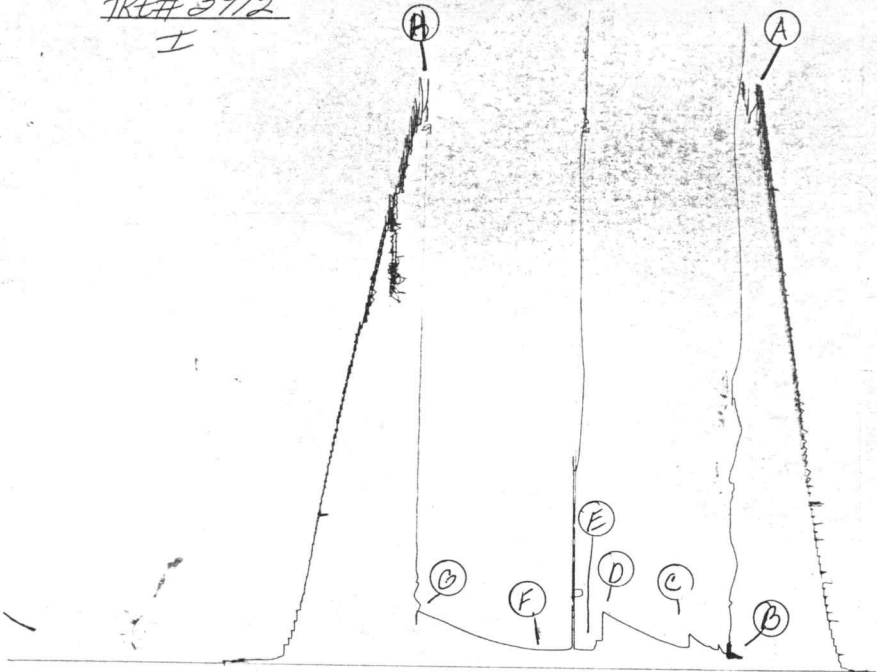
Well No. _____ Elevation _____ Well Temperature _____ °F

Point	Pressure	Open Tool	Time Given	Time Computed
Initial Hydrostatic Mud	_____ P.S.I.	_____	_____ M	_____
First Initial Flow Pressure	_____ P.S.I.	First Flow Pressure	_____ Mins.	_____ Min.
First Final Flow Pressure	_____ P.S.I.	Initial Closed-in Pressure	_____ Mins.	_____ Min.
Initial Closed-in Pressure	_____ P.S.I.	Second Flow Pressure	_____ Mins.	_____ Min.
Second Initial Flow Pressure	_____ P.S.I.	Final Closed-in Pressure	_____ Mins.	_____ Min.
Second Final Flow Pressure	_____ P.S.I.			
Final Closed-in Pressure	_____ P.S.I.			
Final Hydrostatic Mud	_____ P.S.I.			

PRESSURE BREAKDOWN

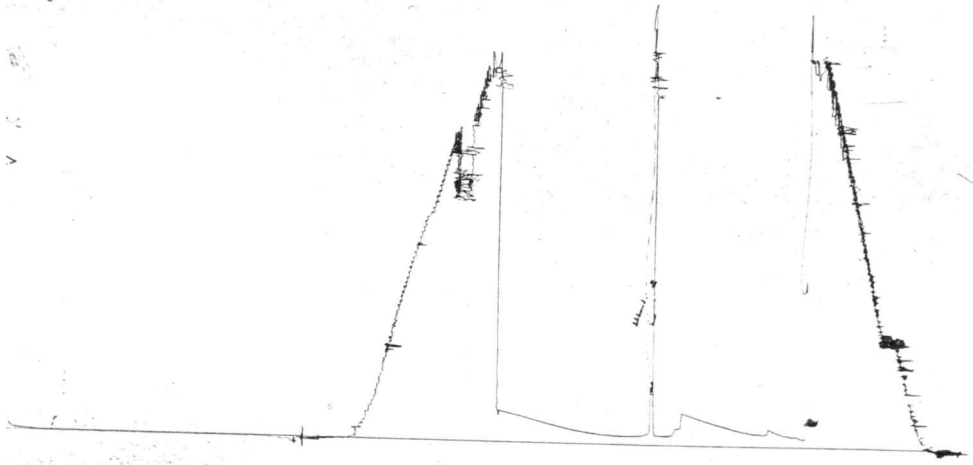
Point ins.	First Flow Pressure	Initial Shut-In	Second Flow Pressure	Final Shut-In
	Breakdown: _____ Inc. of _____ mins. and a final inc. of _____ Min.	Breakdown: _____ Inc. of _____ mins. and a final inc. of _____ Min.	Breakdown: _____ Inc. of _____ mins. and a final inc. of _____ Min.	Breakdown: _____ Inc. of _____ mins. and a final inc. of _____ Min.
	Press.	Point Minutes	Press.	Point Minutes
1	_____	63	_____	63
2	_____	66	_____	66
3	_____	69	_____	69
4	_____	72	_____	72
5	_____	75	_____	75
6	_____	78	_____	78
7	_____	81	_____	81
8	_____	84	_____	84
9	_____	87	_____	87
10	_____	90	_____	90
11	_____	93	_____	93
12	_____	96	_____	96
13	_____	99	_____	99
14	_____	102	_____	102
15	_____	105	_____	105
16	_____	108	_____	108
17	_____	111	_____	111
18	_____	114	_____	114
19	_____	117	_____	117
20	_____	120	_____	120

#75
TKL# 3912
I



58⁰²

TK#3912
0



Company Texas Oil & Gas Corp. Lease & Well No. Robinson "C" #1
 Elevation 1453 Kelly Bush. Formation Mississippi Effective Pay - Ft. Ticket No. 3912
 Date 10-25-79 Sec. 30 Twp. 32S Range 8W County Harper State Kansas
 Test Approved by K.W. Dahlberg Western Representative Guy M. Knipe

Formation Test No. 4 Interval Tested from 4450 ft. to 4460 ft. Total Depth 4460 ft.
 Packer Depth 4443 ft. Size 6 3/4 in. Packer Depth 4450 ft. Size 6 3/4 in.
 Packer Depth - ft. Size - in. Packer Depth - ft. Size - in.

Depth of Selective Zone Set -
 Top Recorder Depth (Inside) 4454 ft. Recorder Number 1564 Cap. 3150
 Bottom Recorder Depth (Outside) 4457 ft. Recorder Number 3085 Cap. 4500
 Below Straddle Recorder Depth - ft. Recorder Number - Cap. -

Drilling Contractor Slawson Drlg. (#4) Drill Collar Length 373 I. D. 2 1/4 in.
 Mud Type Drispac Viscosity 42 Weight Pipe Length - I. D. - in.
 Weight 9.2 Water Loss 12.6 cc. Drill Pipe Length 4043 I. D. 3.8 in.
 Chlorides 15,000 P.P.M. Test Tool Length 34 ft. Tool Size 5 1/2 in.
 Jars: Make W.T.C. Serial Number 406 Anchor Length 10 ft. Size 5 1/2 in.
 Did Well Flow? No Reversed Out - Surface Choke Size 3/4 in. Bottom Choke Size 3/4 in.
 Main Hole Size 7 7/8 in. Tool Joint Size 4 1/2 FH in.

Blow: Weak blow for 30 minutes on pre flow. Opened tool for second flow, few bubble, died.
Flushed tool 20 minutes into second flow, very weak blow for 5 minutes, then died.

Recovered 63 ft. of heavy drilling mud.
 Recovered _____ ft. of _____
 Recovered _____ ft. of _____
 Recovered _____ ft. of _____
 Recovered _____ ft. of _____

Remarks: Slight plugging action on preflow.

Time Set Packer(s)	<u>2:17</u>	<u>A.M.</u> P.M.	Time Started Off Bottom	<u>6:05</u>	<u>A.M.</u> P.M.	Maximum Temperature	<u>-</u>
Initial Hydrostatic Pressure	(A)	<u>2304</u>			P.S.I.		
Initial Flow Period	Minutes	<u>30</u>	(B)	<u>42</u>	P.S.I. to (C)	<u>146</u>	P.S.I.
Initial Closed In Period	Minutes	<u>63</u>	(D)	<u>227</u>	P.S.I.		
Final Flow Period	Minutes	<u>45</u>	(E)	<u>115</u>	P.S.I. to (F)	<u>71</u>	P.S.I.
Final Closed In Period	Minutes	<u>90</u>	(G)	<u>221</u>	P.S.I.		
Final Hydrostatic Pressure	(H)	<u>2275</u>			P.S.I.		

WESTERN TESTING CO., INC.
Pressure Data

Date 10-25-79 Test Ticket No. 3912
 Recorder No. 1564 Capacity 3150 Location 4454 Ft.
 Clock No. - Elevation 1453 Kelly Bushing Well Temperature - °F

Point	Pressure		Time Given	Time Computed
A Initial Hydrostatic Mud	<u>2304</u> P.S.I.	Open Tool	<u>2:17A.</u> M	
B First Initial Flow Pressure	<u>42</u> P.S.I.	First Flow Pressure	<u>30</u> Mins.	<u>30</u> Mins.
C First Final Flow Pressure	<u>146</u> P.S.I.	Initial Closed-in Pressure	<u>60</u> Mins.	<u>63</u> Mins.
D Initial Closed-in Pressure	<u>227</u> P.S.I.	Second Flow Pressure	<u>45</u> Mins.	<u>45</u> Mins.
E Second Initial Flow Pressure	<u>115</u> P.S.I.	Final Closed-in Pressure	<u>90</u> Mins.	<u>90</u> Mins.
F Second Final Flow Pressure	<u>71</u> P.S.I.			
G Final Closed-in Pressure	<u>221</u> P.S.I.			
H Final Hydrostatic Mud	<u>2275</u> P.S.I.			

PRESSURE BREAKDOWN

First Flow Pressure
 Breakdown: 6 Inc.
 of 5 mins. and a
 final inc. of 0 Min.

Initial Shut-In
 Breakdown: 21 Inc.
 of 3 mins. and a
 final inc. of 0 Min.

Second Flow Pressure
 Breakdown: 9 Inc.
 of 5 mins. and a
 final inc. of 0 Min.

Final Shut-In
 Breakdown: 30 Inc.
 of 3 mins. and a
 final inc. of 0 Min.

Point Mins.	Press.	Point Minutes	Press.	Point Minutes	Press.	Point Minutes	Press.
P 1 <u>0</u>	<u>41</u>	<u>0</u>	<u>146</u>	<u>0</u>	<u>115</u>	<u>0</u>	<u>71</u>
P 2 <u>5</u>	<u>71</u>	<u>3</u>	<u>91</u>	<u>5</u>	<u>93</u>	<u>3</u>	<u>73</u>
P 3 <u>10</u>	<u>81</u>	<u>6</u>	<u>92</u>	<u>10</u>	<u>73</u>	<u>6</u>	<u>74</u>
P 4 <u>15</u>	<u>95</u>	<u>9</u>	<u>96</u>	<u>15</u>	<u>74</u>	<u>9</u>	<u>77</u>
P 5 <u>20</u>	<u>105</u>	<u>12</u>	<u>102</u>	<u>20</u>	<u>77</u>	<u>12</u>	<u>81</u>
P 6 <u>25</u>	<u>124</u>	<u>15</u>	<u>108</u>	<u>25</u>	<u>74</u>	<u>15</u>	<u>84</u>
P 7 <u>30</u>	<u>146</u>	<u>18</u>	<u>113</u>	<u>30</u>	<u>71</u>	<u>18</u>	<u>87</u>
P 8		<u>21</u>	<u>118</u>	<u>35</u>	<u>71</u>	<u>21</u>	<u>90</u>
P 9		<u>24</u>	<u>124</u>	<u>40</u>	<u>71</u>	<u>24</u>	<u>93</u>
P10		<u>27</u>	<u>132</u>	<u>45</u>	<u>71</u>	<u>27</u>	<u>98</u>
P11		<u>30</u>	<u>140</u>			<u>30</u>	<u>102</u>
P12		<u>33</u>	<u>147</u>			<u>33</u>	<u>107</u>
P13		<u>36</u>	<u>154</u>			<u>36</u>	<u>112</u>
P14		<u>39</u>	<u>160</u>			<u>39</u>	<u>116</u>
P15		<u>42</u>	<u>166</u>			<u>42</u>	<u>121</u>
P16		<u>45</u>	<u>174</u>			<u>45</u>	<u>127</u>
P17		<u>48</u>	<u>182</u>			<u>48</u>	<u>132</u>
P18		<u>51</u>	<u>189</u>			<u>51</u>	<u>140</u>
P19		<u>54</u>	<u>199</u>			<u>54</u>	<u>145</u>
P20		<u>57</u>	<u>208</u>			<u>57</u>	<u>150</u>
		<u>60</u>	<u>218</u>			<u>60</u>	<u>158</u>
		<u>63</u>	<u>227</u>				

WESTERN TESTING CO., INC.
Pressure Data

Date 10-29-79

Test Ticket No. 3912

Recorder No. 1564

Capacity 3150

Location 4454 Ft.

Clock No. - Elevation 1453 Kelly Bushing

Well Temperature - °F

Point	Pressure		Time Given	Time Computed
A Initial Hydrostatic Mud	2304 P.S.I.	Open Tool	2:17A. M	
B First Initial Flow Pressure	42 P.S.I.	First Flow Pressure	30 Mins.	30 Mins.
C First Final Flow Pressure	146 P.S.I.	Initial Closed-in Pressure	60 Mins.	63 Mins.
D Initial Closed-in Pressure	227 P.S.I.	Second Flow Pressure	45 Mins.	45 Mins.
E Second Initial Flow Pressure	115 P.S.I.	Final Closed-in Pressure	90 Mins.	90 Mins.
F Second Final Flow Pressure	71 P.S.I.			
G Final Closed-in Pressure	221 P.S.I.			
H Final Hydrostatic Mud	2275 P.S.I.			

PRESSURE BREAKDOWN

First Flow Pressure
Breakdown: _____ Inc.
of 5 mins. and a
final inc. of 0 Min.

Initial Shut-In
Breakdown: _____ Inc.
of 3 mins. and a
final inc. of 0 Min.

Second Flow Pressure
Breakdown: _____ Inc.
of 5 mins. and a
final inc. of 0 Min.

Final Shut-In
Breakdown: 30 Inc.
of 3 mins. and a
final inc. of 0 Min.

Point Mins.	Press.	Point Minutes	Press.	Point Minutes	Press.	Point Minutes	Press.
P 1				53	166		
P 2				55	174		
P 3				59	180		
P 4				72	186		
P 5				75	193		
P 6				78	199		
P 7				81	205		
P 8				84	213		
P 9				87	219		
P10				90	221		
P11							
P12							
P13							
P14							
P15							
P16							
P17							
P18							
P19							
P20							