

TRILOBITE
TESTING, INC.

DRILL STEM TEST REPORT

Prepared For: **Oil Producers Inc. of Kansas**
1710 Waterfront Parkway Wichita, KS 67206

ATTN: Paul Gerlach

26/32/33

~~C~~Marlile 1A-26

Start Date: 2005.11.19 @ 19:46:15

End Date: 2005.11.20 @ 05:02:15

Job Ticket #: 22340 DST#: 1

15-175-21994-00-00

Trilobite Testing, Inc
PO Box 362 Hays, KS 67601
ph: 785-625-4778 fax: 785-625-5620

Oil Producers Inc. of Kansas

Charlie 1A-26

26/32/33 W

DST # 1

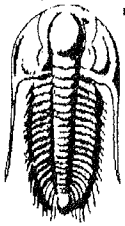
Marmonton A

2005.11.19

RECEIVED

AUG 15 2006

KCC WICHITA



**TRILOBITE
TESTING, INC.**

DRILL STEM TEST REPORT

TOOL DIAGRAM

Oil Producers Inc. of Kansas
1710 Waterfront Parkway Wichita, KS 67206
ATTN: Paul Gerlach

Charlile 1A-26
26/32/33
Job Ticket: 22340 **DST#: 1**
Test Start: 2005.11.19 @ 19:46:15

Tool Information

Drill Pipe:	Length: 4512.00 ft	Diameter: 3.80 inches	Volume: 63.29 bbl	Tool Weight: 2000.00 lb
Heavy Wt. Pipe:	Length: 0.00 ft	Diameter: 0.00 inches	Volume: 0.00 bbl	Weight set on Packer: 20000.00 lb
Drill Collar:	Length: 248.00 ft	Diameter: 2.25 inches	Volume: 1.22 bbl	Weight to Pull Loose: 70000.00 lb
			<u>Total Volume: 64.51 bbl</u>	Tool Chased 0.00 ft
Drill Pipe Above KB:	18.00 ft			String Weight: Initial 65000.00 lb
Depth to Top Packer:	4770.00 ft			Final 65000.00 lb
Depth to Bottom Packer:	ft			
Interval between Packers:	30.00 ft			
Tool Length:	58.00 ft			
Number of Packers:	2	Diameter: 6.75 inches		

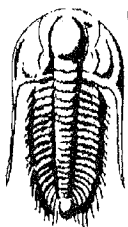
Tool Comments:

Tool Description

Tool Description	Length (ft)	Serial No.	Position	Depth (ft)	Accum. Lengths
Change Over Sub	1.00			4743.00	
Shut In Tool	5.00			4748.00	
Hydraulic tool	5.00			4753.00	
Jars	5.00			4758.00	
Safety Joint	3.00			4761.00	
Packer	5.00			4766.00	28.00 Bottom Of Top Packer
Packer	4.00			4770.00	
Stubb	1.00			4771.00	
Perforations	1.00			4772.00	
Recorder	0.00	6752	Inside	4772.00	
Perforations	25.00			4797.00	
Recorder	0.00	13630	Inside	4797.00	
Bullnose	3.00			4800.00	30.00 Bottom Packers & Anchor

Total Tool Length: 58.00

RECEIVED
AUG 15 2006
KCC WICHITA



**TRILOBITE
TESTING, INC.**

DRILL STEM TEST REPORT

FLUID SUMMARY

Oil Producers Inc. of Kansas
1710 Waterfront Parkway Wichita, KS 67206
ATTN: Paul Gerlach

Charlile 1A-26
26/32/33
Job Ticket: 22340 **DST#: 1**
Test Start: 2005.11.19 @ 19:46:15

Mud and Cushion Information

Mud Type: Gel Chem	Cushion Type:	Oil API:	deg API
Mud Weight: 9.00 lb/gal	Cushion Length: ft	Water Salinity:	22000 ppm
Viscosity: 42.00 sec/qt	Cushion Volume: bbl		
Water Loss: 9.16 in ³	Gas Cushion Type:		
Resistivity: ohm.m	Gas Cushion Pressure: psig		
Salinity: 2700.00 ppm			
Filter Cake: inches			

Recovery Information

Recovery Table

Length ft	Description	Volume bbl
124.00	5%G,65%W,30%M	0.610
124.00	5%G,10%W,85%M	0.610

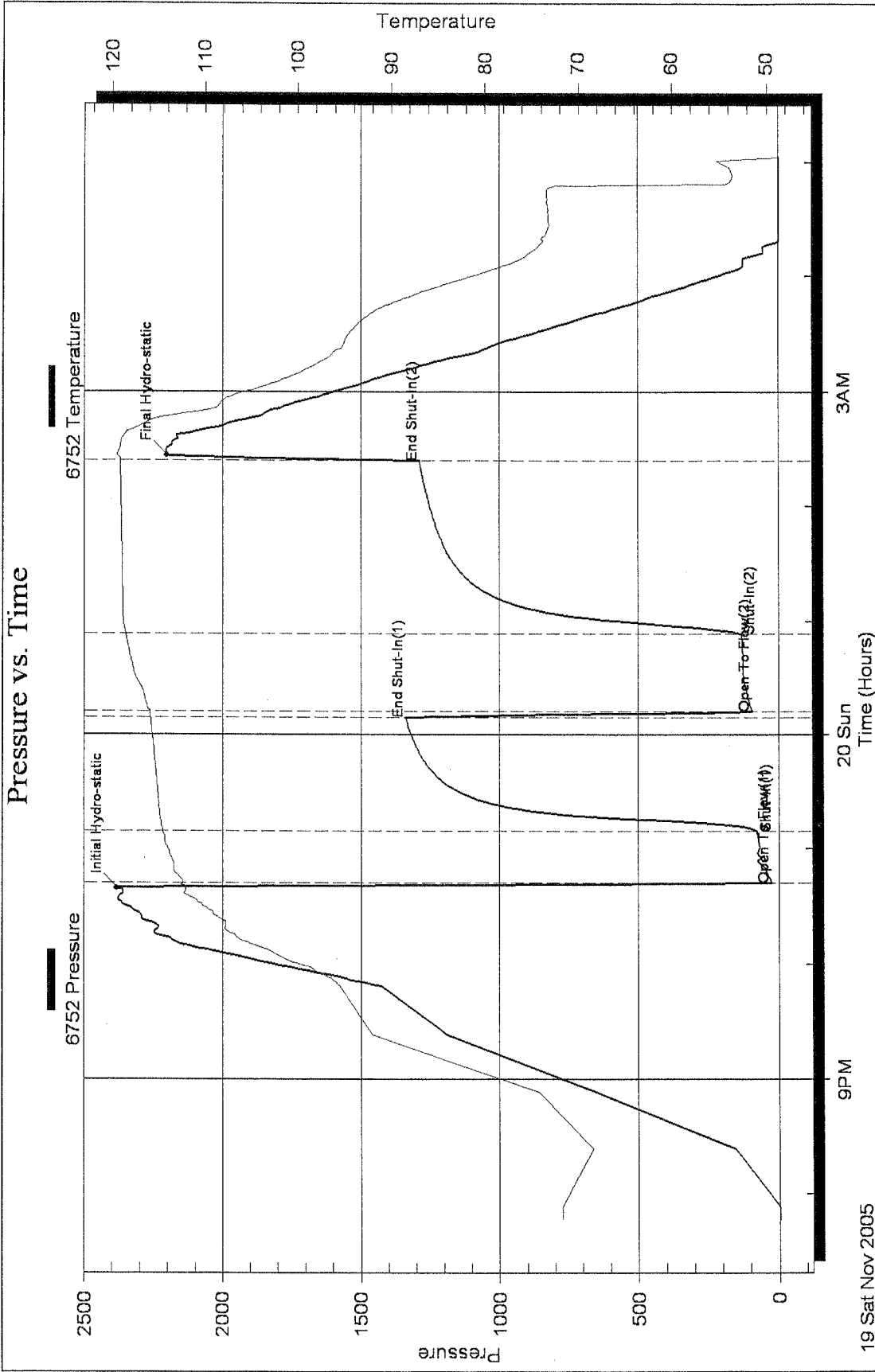
Total Length: 248.00 ft Total Volume: 1.220 bbl

Num Fluid Samples: 0 Num Gas Bombs: 0 Serial #:

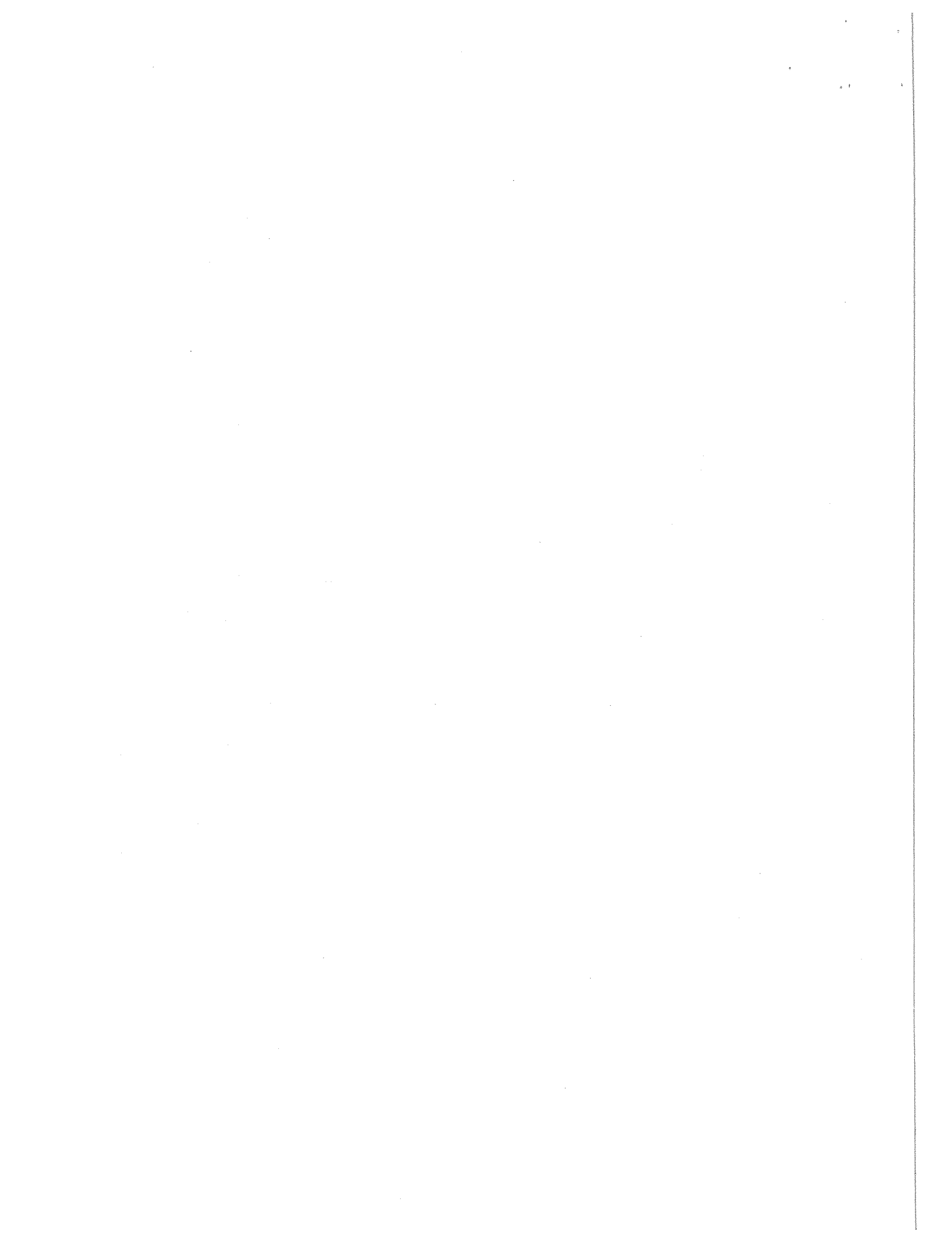
Laboratory Name: Laboratory Location:

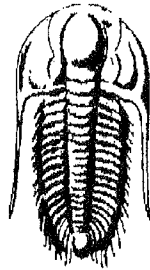
Recovery Comments: RW=.428@50F=22000

Pressure vs. Time



RECEIVED
 AUG 15 2005
 KCC WICHITA





TRILOBITE
TESTING, INC.

DRILL STEM TEST REPORT

Prepared For: **Oil Producers Inc. of Kansas**

1710 Waterfront Parkway Wichita, KS 67206

ATTN: Paul Gerlach

26/32/33

Charlile 1A-26

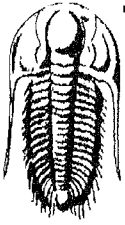
Start Date: 2005.11.22 @ 10:25:13

End Date: 2005.11.22 @ 21:01:13

Job Ticket #: 22341 DST #: 2

Trilobite Testing, Inc
PO Box 362 Hays, KS 67601
ph: 785-625-4778 fax: 785-625-5620

RECEIVED
AUG 15 2006
KCC WICHITA



TRILOBITE TESTING, INC.

DRILL STEM TEST REPORT

Oil Producers Inc. of Kansas
 1710 Waterfront Parkway Wichita, KS 67206
 ATTN: Paul Gerlach

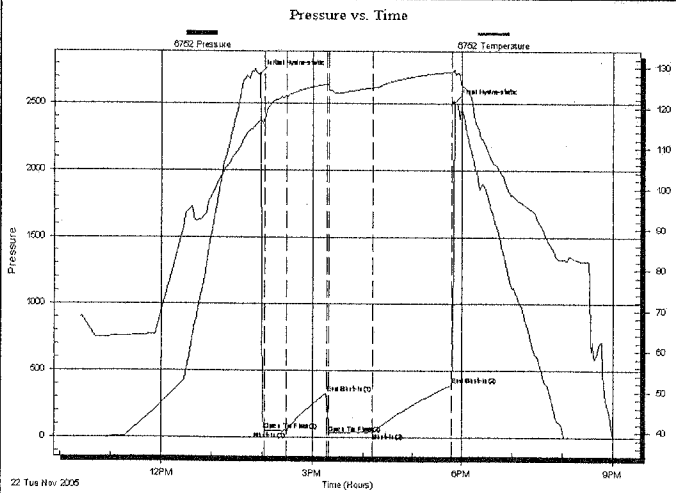
Charlile 1A-26
26/32/33
 Job Ticket: 22341 **DST#: 2**
 Test Start: 2005.11.22 @ 10:25:13

GENERAL INFORMATION:

Formation: **Morrow Sd.**
 Deviated: No Whipstock: ft (KB)
 Time Tool Opened: 14:02:43
 Time Test Ended: 21:01:13
 Interval: **5435.00 ft (KB) To 5505.00 ft (KB) (TVD)**
 Total Depth: 5505.00 ft (KB) (TVD)
 Hole Diameter: 7.78 inches Hole Condition: Good
 Test Type: Conventional Bottom Hole
 Tester: Chris Hagman
 Unit No: 34
 Reference Elevations: 2880.00 ft (KB)
 2870.00 ft (CF)
 KB to GR/CF: 10.00 ft

Serial #: 6752 Inside
 Press@RunDepth: 39.24 psig @ 5438.00 ft (KB) Capacity: 7000.00 psig
 Start Date: 2005.11.22 End Date: 2005.11.22 Last Calib.: 1899.12.30
 Start Time: 10:25:13 End Time: 21:01:13 Time On Btm: 2005.11.22 @ 13:57:22
 Time Off Btm: 2005.11.22 @ 17:50:03

TEST COMMENT: IF: BOB 20 sec., strong steady blow
 IS: No blow back
 FF: BOB ASAO. GTS 45 min. (TSTG), strong steady blow
 FS: No blow back



PRESSURE SUMMARY

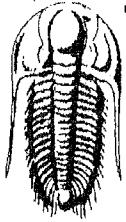
Time (Min.)	Pressure (psig)	Temp (deg F)	Annotation
0	2718.08	116.97	Initial Hydro-static
6	48.02	117.36	Open To Flow (1)
32	46.49	122.99	Shut-In(1)
79	330.90	125.83	End Shut-In(1)
82	31.81	124.69	Open To Flow (2)
135	39.24	125.01	Shut-In(2)
231	396.82	129.01	End Shut-In(2)
233	2506.50	129.64	Final Hydro-static

Recovery

Length (ft)	Description	Volume (bbl)
62.00	5%G,95%M	0.30

Gas Rates

Choke (inches)	Pressure (psig)	Gas Rate (Mcf/d)



**TRILOBITE
TESTING, INC.**

DRILL STEM TEST REPORT

TOOL DIAGRAM

Oil Producers Inc. of Kansas
 1710 Waterfront Parkway Wichita, KS 67206
 ATTN: Paul Gerlach

Charlile 1A-26
26/32/33
 Job Ticket: 22341 **DST#: 2**
 Test Start: 2005.11.22 @ 10:25:13

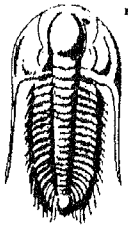
Tool Information

Drill Pipe:	Length: 5190.00 ft	Diameter: 3.80 inches	Volume: 72.80 bbl	Tool Weight: 2000.00 lb
Heavy Wt. Pipe:	Length: 0.00 ft	Diameter: 0.00 inches	Volume: 0.00 bbl	Weight set on Packer: 20000.00 lb
Drill Collar:	Length: 248.00 ft	Diameter: 2.25 inches	Volume: 1.22 bbl	Weight to Pull Loose: 100000.0 lb
			<u>Total Volume: 74.02 bbl</u>	Tool Chased 0.00 ft
Drill Pipe Above KB:	31.00 ft			String Weight: Initial 80000.00 lb
Depth to Top Packer:	5435.00 ft			Final 80000.00 lb
Depth to Bottom Packer:	ft			
Interval between Packers:	70.00 ft			
Tool Length:	98.00 ft			
Number of Packers:	2	Diameter: 6.75 inches		

Tool Comments:
 All gas too small to gauge

Tool Description	Length (ft)	Serial No.	Position	Depth (ft)	Accum. Lengths
Change Over Sub	1.00			5408.00	
Shut In Tool	5.00			5413.00	
Hydraulic tool	5.00			5418.00	
Jars	5.00			5423.00	
Safety Joint	3.00			5426.00	
Packer	5.00			5431.00	28.00 Bottom Of Top Packer
Packer	4.00			5435.00	
Stubb	1.00			5436.00	
Perforations	2.00			5438.00	
Recorder	0.00	6752	Inside	5438.00	
Change Over Sub	1.00			5439.00	
Drill Pipe	62.00			5501.00	
Change Over Sub	1.00			5502.00	
Recorder	0.00	13630	Inside	5502.00	
Bullnose	3.00			5505.00	70.00 Bottom Packers & Anchor

Total Tool Length: 98.00



TRILOBITE
TESTING, INC.

DRILL STEM TEST REPORT

FLUID SUMMARY

Oil Producers Inc. of Kansas
1710 Waterfront Parkway Wichita, KS 67206
ATTN: Paul Gerlach

Charlile 1A-26
26/32/33
Job Ticket: 22341 **DST#: 2**
Test Start: 2005.11.22 @ 10:25:13

Mud and Cushion Information

Mud Type: Gel Chem	Cushion Type:	Oil API:	deg API
Mud Weight: 9.00 lb/gal	Cushion Length: ft	Water Salinity:	3800 ppm
Viscosity: 42.00 sec/qt	Cushion Volume: bbl		
Water Loss: 11.57 in ³	Gas Cushion Type:		
Resistivity: ohm.m	Gas Cushion Pressure: psig		
Salinity: 3400.00 ppm			
Filter Cake: inches			

Recovery Information

Recovery Table

Length ft	Description	Volume bbl
62.00	5%G,95%M	0.305

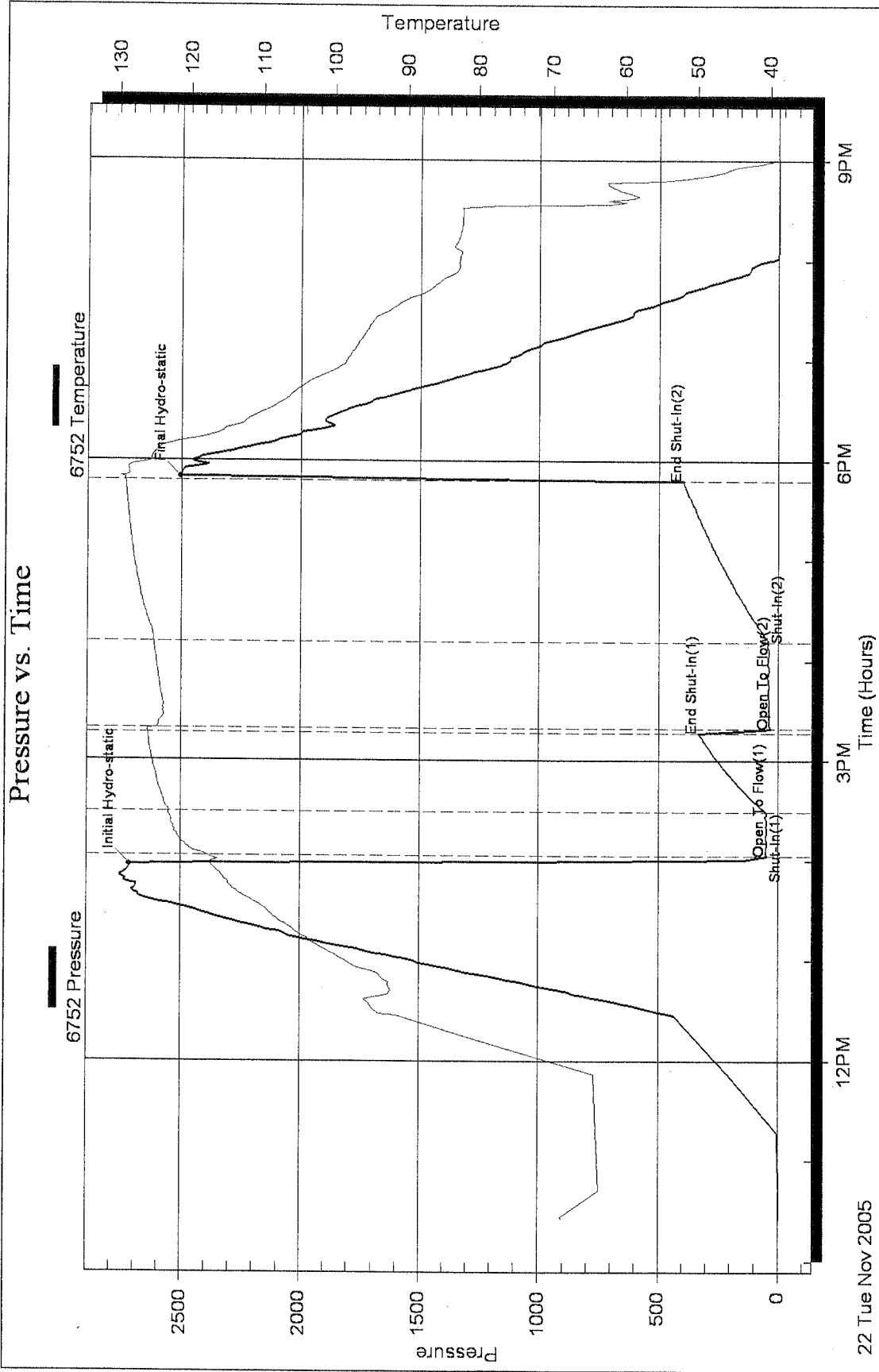
Total Length: 62.00 ft Total Volume: 0.305 bbl

Num Fluid Samples: 0 Num Gas Bombs: 0 Serial #:

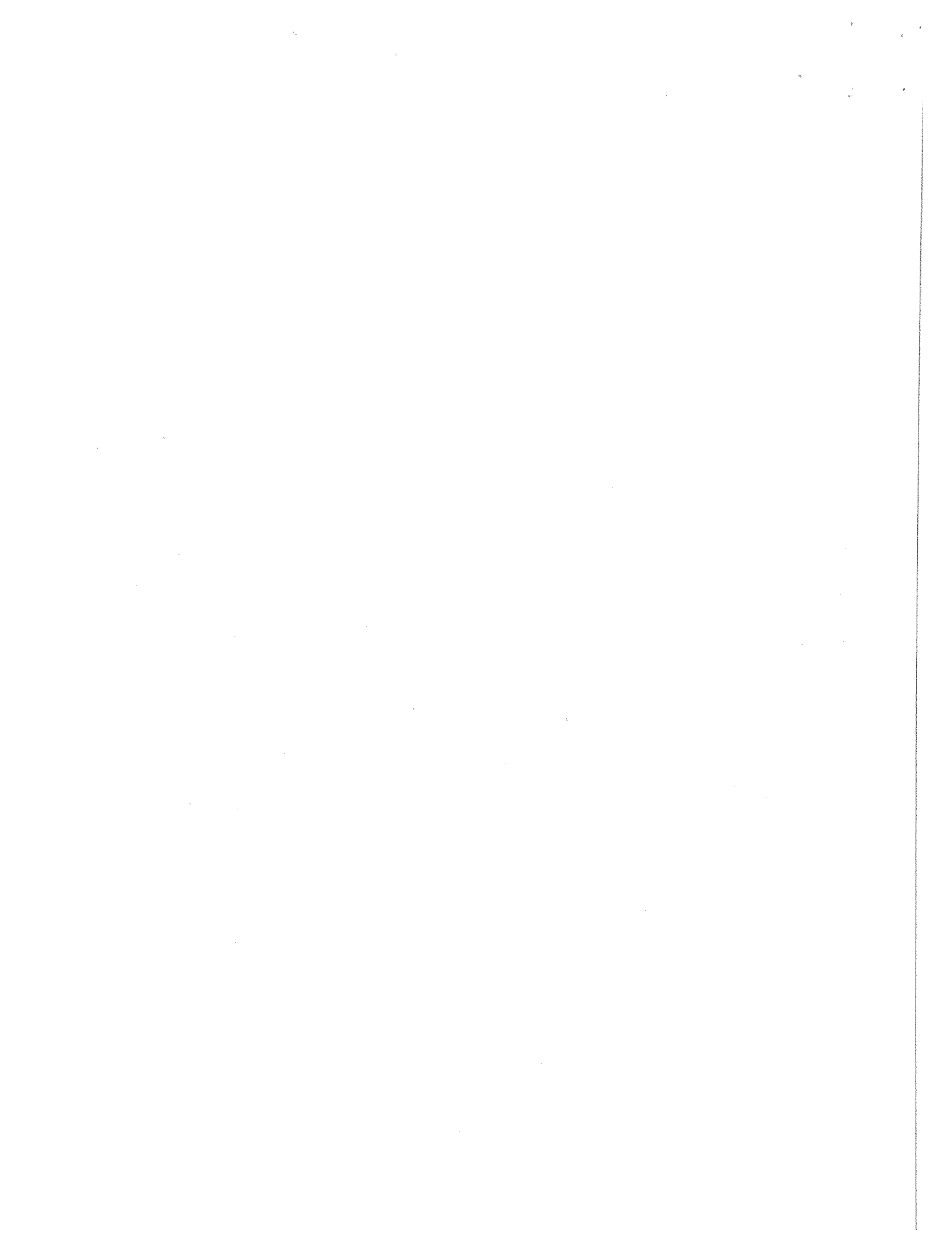
Laboratory Name: Laboratory Location:

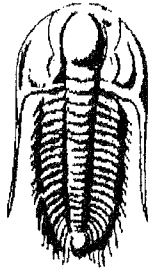
Recovery Comments: RW=1.575@60F=3800ppm

Pressure vs. Time



RECEIVED
 AUG 15 2006
 KCC WICHITA





TRILOBITE
TESTING, INC.

DRILL STEM TEST REPORT

Prepared For: **Oil Producers Inc. of Kansas**
1710 Waterfront Parkway Wichita, KS 67206

ATTN: Paul Gerlach

26/32/33

Charlile 1A-26

Start Date: 2005.11.23 @ 14:45:20
End Date: 2005.11.24 @ 00:41:59
Job Ticket #: 22342 DST #: 3

Trilobite Testing, Inc
PO Box 362 Hays, KS 67601
ph: 785-625-4778 fax: 785-625-5620

RECEIVED
AUG 15 2006
KCC WICHITA

Printed: 2005.11.28 @ 11:20:37 Page 1

Oil Producers Inc. of Kansas

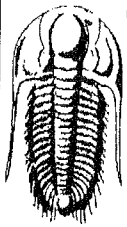
Charlile 1A-26

26/32/33

DST # 3

Chester

2005.11.23



**TRILOBITE
TESTING, INC.**

DRILL STEM TEST REPORT

TOOL DIAGRAM

Oil Producers Inc. of Kansas
1710 Waterfront Parkway Wichita, KS 67206
ATTN: Paul Gerlach

Charlie 1A-26
26/32/33
Job Ticket: 22342 **DST#: 3**
Test Start: 2005.11.23 @ 14:45:20

Tool Information

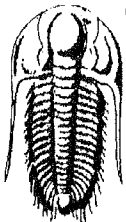
Drill Pipe:	Length: 5283.00 ft	Diameter: 3.80 inches	Volume: 74.11 bbl	Tool Weight: 2000.00 lb
Heavy Wt. Pipe:	Length: 0.00 ft	Diameter: 0.00 inches	Volume: 0.00 bbl	Weight set on Packer: 20000.00 lb
Drill Collar:	Length: 248.00 ft	Diameter: 2.25 inches	Volume: 1.22 bbl	Weight to Pull Loose: 110000.0 lb
			<u>Total Volume: 75.33 bbl</u>	Tool Chased 0.00 ft
Drill Pipe Above KB:	31.00 ft			String Weight: Initial 80000.00 lb
Depth to Top Packer:	5528.00 ft			Final 80000.00 lb
Depth to Bottom Packer:	ft			
Interval between Packers:	137.00 ft			
Tool Length:	165.00 ft			
Number of Packers:	2	Diameter: 6.75 inches		

Tool Comments:

Tool Description

Tool Description	Length (ft)	Serial No.	Position	Depth (ft)	Accum. Lengths
Change Over Sub	1.00			5501.00	
Shut In Tool	5.00			5506.00	
Hydraulic tool	5.00			5511.00	
Jars	5.00			5516.00	
Safety Joint	3.00			5519.00	
Packer	5.00			5524.00	28.00 Bottom Of Top Packer
Packer	4.00			5528.00	
Stubb	1.00			5529.00	
Perforations	2.00			5531.00	
Recorder	0.00	6752	Inside	5531.00	
Perforations	5.00			5536.00	
Change Over Sub	1.00			5537.00	
Drill Pipe	124.00			5661.00	
Change Over Sub	1.00			5662.00	
Recorder	0.00	13630	Inside	5662.00	
Bullnose	3.00			5665.00	137.00 Bottom Packers & Anchor
Total Tool Length:	165.00				

RECEIVED
AUG 15 2006
WICHITA



TRILOBITE
TESTING, INC.

DRILL STEM TEST REPORT

FLUID SUMMARY

Oil Producers Inc. of Kansas

Charlile 1A-26

1710 Waterfront Parkway Wichita, KS 67206

26/32/33

Job Ticket: 22342

DST#: 3

ATTN: Paul Gerlach

Test Start: 2005.11.23 @ 14:45:20

Mud and Cushion Information

Mud Type: Gel Chem

Cushion Type:

Oil API:

deg API

Mud Weight: 9.00 lb/gal

Cushion Length:

ft

Water Salinity:

6600 ppm

Viscosity: 46.00 sec/qt

Cushion Volume:

bbl

Water Loss: 15.97 in³

Gas Cushion Type:

Resistivity: ohm.m

Gas Cushion Pressure:

psig

Salinity: 6100.00 ppm

Filter Cake: inches

Recovery Information

Recovery Table

Length ft	Description	Volume bbl
90.00	100%M	0.443

Total Length: 90.00 ft Total Volume: 0.443 bbl

Num Fluid Samples: 0

Num Gas Bombs: 0

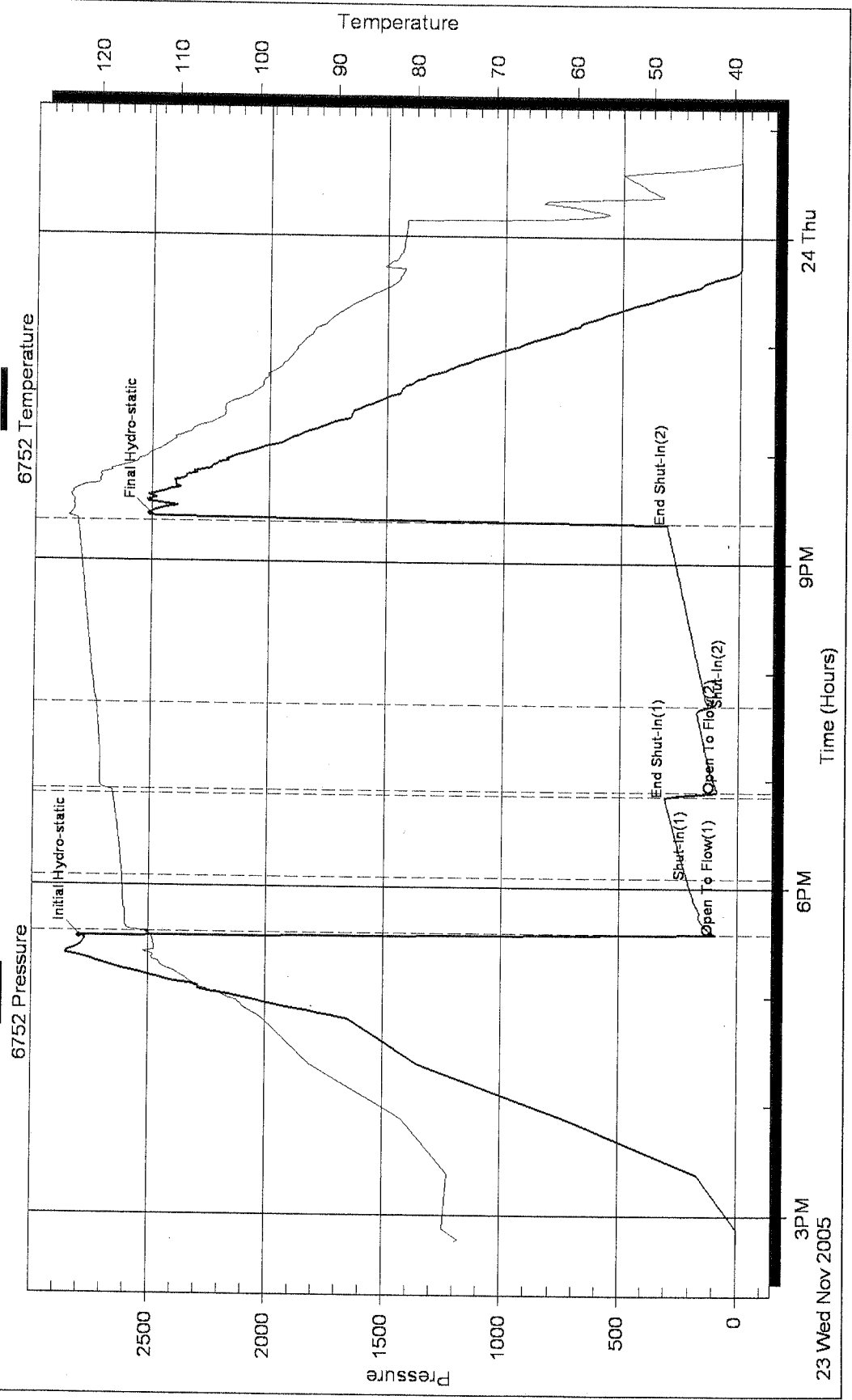
Serial #:

Laboratory Name:

Laboratory Location:

Recovery Comments: RW= .986@65F=6600ppm

Pressure vs. Time



RECEIVED
 AUG 15 2006
 KCC WICHITA

198940