

JW # 5198



TRILOBITE TESTING, INC.

STATIC GRADIENT REPORT

GLB Osborne #1
32 32S 6W
 Licence No:
 ATTN: Test Start: 2002.10.07 @ 10:53:27

GENERAL INFORMATION:

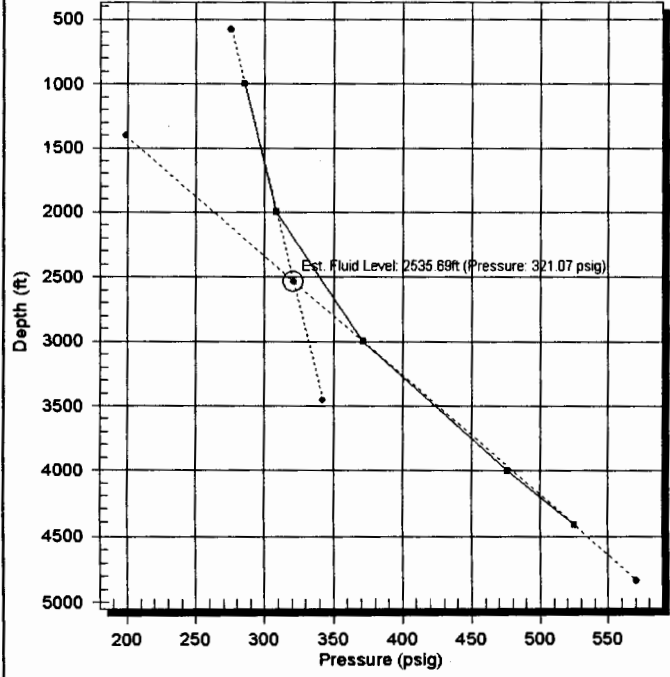
Formation: Field: Connie Sue Company Rep: Paul Simpson
 Well Status: Unit No.:
 Deviated: Yes Whipstock: ft (CF) Reference Elevations: ft (KB)
 Shut In Date: ft (CF)
 Perforations: ft (CF) To ft (CF) (TVD) KB to CF: ft
 Tubing Press: Initial psig Final psig inches @ ft (CF) **MPP:** ft (CF)
 Casing Press: Initial psig Final psig inches @ ft (CF) **Press@MPP:** psig
 Open Hole: inches **B.H. Temp:** deg F
 Packer Depth: ft (CF) **Assumed Gradient:** .12 psig/ft

RECORDER INFORMATION:

Serial #: 6528 Capacity: 7000 psig
 Press@RunDepth: psig @ ft (CF) Last Calib.:
 Start Date: 2002.10.07 @ 10:53:27 Time On Btrr: 2002.10.07 @ 10:53:28
 End Date: 2002.10.10 @ 15:22:36 Time Off Btrr:

TEST COMMENT: Flowing

Static Gradient Graph
6528



GRADIENT SUMMARY

Relative Time (Hours)	Depth (ft)	Pressure (psig)	Gradient (psig/ft)
0.36111	1000.00	285.28	0.00
0.57778	2000.00	308.59	0.02
0.72778	3000.00	371.38	0.06
0.86111	4000.00	475.97	0.10
0.94444	4420.00	525.24	0.12



**TRILOBITE
TESTING, INC.**

STATIC GRADIENT DATA LISTING

GLB

Osborne #1

32 32S 6W

Licence No:

ATTN:

Test Start: 2002.10.07 @ 10:53:27

Serial # 6528

Actual Time (Date/Time)	Relative Time (Hours)	Depth (ft)	Pressure (psig)	Temperature (deg F)	Comments
2002.10.07 @ 10:53:28	0.00028		-0.80	73.95	
2002.10.07 @ 10:54:55	0.02444		-1.15	74.05	
2002.10.07 @ 11:04:37	0.18611		-1.52	67.37	
2002.10.07 @ 11:14:47	0.35556		284.50	83.17	
2002.10.07 @ 11:14:57	0.35833		284.52	83.18	
2002.10.07 @ 11:15:07	0.36111	1000.00	285.28	83.17	1000
2002.10.07 @ 11:15:17	0.36389		285.51	83.17	
2002.10.07 @ 11:15:27	0.36667		286.97	83.16	
2002.10.07 @ 11:15:37	0.36944		287.38	83.17	
2002.10.07 @ 11:27:47	0.57222		310.32	100.57	
2002.10.07 @ 11:27:57	0.57500		309.58	100.57	
2002.10.07 @ 11:28:07	0.57778	2000.00	308.59	100.55	2000
2002.10.07 @ 11:28:17	0.58056		307.58	100.51	
2002.10.07 @ 11:28:27	0.58333		307.92	100.48	
2002.10.07 @ 11:28:37	0.58611		307.95	100.50	
2002.10.07 @ 11:36:47	0.72222		369.56	121.28	
2002.10.07 @ 11:36:57	0.72500		368.98	121.26	
2002.10.07 @ 11:37:07	0.72778	3000.00	371.38	121.26	3000
2002.10.07 @ 11:37:17	0.73056		372.76	121.34	
2002.10.07 @ 11:37:27	0.73333		372.79	121.36	
2002.10.07 @ 11:37:37	0.73611		374.10	121.35	
2002.10.07 @ 11:44:47	0.85556		470.67	137.53	
2002.10.07 @ 11:44:57	0.85833		472.23	137.54	
2002.10.07 @ 11:45:07	0.86111	4000.00	475.97	137.57	4000
2002.10.07 @ 11:45:17	0.86389		475.39	137.62	
2002.10.07 @ 11:45:27	0.86667		474.82	137.61	
2002.10.07 @ 11:45:37	0.86944		474.14	137.59	
2002.10.07 @ 11:49:47	0.93889		522.61	139.03	
2002.10.07 @ 11:49:57	0.94167		523.61	139.03	
2002.10.07 @ 11:50:07	0.94444	4420.00	525.24	139.03	4420
2002.10.07 @ 11:50:17	0.94722		524.94	139.03	
2002.10.07 @ 11:50:27	0.95000		525.68	139.03	
2002.10.07 @ 11:50:37	0.95278		526.19	139.03	

Printing every 87 samples

Serial # 6528

Actual Time (Date/Time)	Relative Time (Hours)	Depth (ft)	Pressure (psig)	Temperature (deg F)	Comments
2002.10.07 @ 12:05:07	1.19444		557.10	139.14	
2002.10.07 @ 12:19:37	1.43611		832.47	139.73	
2002.10.07 @ 12:34:07	1.67778		857.80	139.64	
2002.10.07 @ 12:48:37	1.91944		873.17	139.67	
2002.10.07 @ 13:03:07	2.16111		874.24	139.71	
2002.10.07 @ 13:17:37	2.40278		875.89	139.78	
2002.10.07 @ 13:32:07	2.64444		880.18	139.85	
2002.10.07 @ 13:46:37	2.88611		882.96	139.92	
2002.10.07 @ 14:01:07	3.12778		885.20	139.98	
2002.10.07 @ 14:15:37	3.36944		886.72	140.04	
2002.10.07 @ 14:30:07	3.61111		889.31	140.11	
2002.10.07 @ 14:44:37	3.85278		892.14	140.19	
2002.10.07 @ 14:59:07	4.09444		894.26	140.25	
2002.10.07 @ 15:13:37	4.33611		896.01	140.32	
2002.10.07 @ 15:28:07	4.57778		897.43	140.37	
2002.10.07 @ 15:42:37	4.81944		898.53	140.41	
2002.10.07 @ 15:57:07	5.06111		899.68	140.46	
2002.10.07 @ 16:11:37	5.30278		900.73	140.49	
2002.10.07 @ 16:26:07	5.54444		901.85	140.54	
2002.10.07 @ 16:40:37	5.78611		902.97	140.57	
2002.10.07 @ 16:55:07	6.02778		903.91	140.62	
2002.10.07 @ 17:09:37	6.26944		904.95	140.64	
2002.10.07 @ 17:24:07	6.51111		906.25	140.69	
2002.10.07 @ 17:38:37	6.75278		909.03	140.74	
2002.10.07 @ 17:53:07	6.99444		910.55	140.80	
2002.10.07 @ 18:07:37	7.23611		911.79	140.83	
2002.10.07 @ 18:22:07	7.47778		912.82	140.85	
2002.10.07 @ 18:36:37	7.71944		913.91	140.89	
2002.10.07 @ 18:51:07	7.96111		914.78	140.91	
2002.10.07 @ 19:05:37	8.20278		915.64	140.95	
2002.10.07 @ 19:20:07	8.44444		916.38	140.95	
2002.10.07 @ 19:34:37	8.68611		917.73	140.98	
2002.10.07 @ 19:49:07	8.92778		918.68	141.02	
2002.10.07 @ 20:03:37	9.16944		919.33	141.02	
2002.10.07 @ 20:18:07	9.41111		919.75	141.05	
2002.10.07 @ 20:32:37	9.65278		920.34	141.07	
2002.10.07 @ 20:47:07	9.89444		921.02	141.08	
2002.10.07 @ 21:01:37	10.13611		922.16	141.10	
2002.10.07 @ 21:16:07	10.37778		923.09	141.13	
2002.10.07 @ 21:30:37	10.61944		923.86	141.14	
2002.10.07 @ 21:45:07	10.86111		924.55	141.16	
Printing every 87 samples					

Serial # 6528

Actual Time (Date/Time)	Relative Time (Hours)	Depth (ft)	Pressure (psig)	Temperature (deg F)	Comments
2002.10.07 @ 21:59:37	11.10278		925.19	141.18	
2002.10.07 @ 22:14:07	11.34444		926.01	141.19	
2002.10.07 @ 22:28:37	11.58611		926.57	141.21	
2002.10.07 @ 22:43:07	11.82778		927.17	141.24	
2002.10.07 @ 23:01:57	12.14167		928.17	141.24	
2002.10.07 @ 23:45:27	12.86667		929.99	141.30	
2002.10.08 @ 00:28:57	13.59167		931.98	141.34	
2002.10.08 @ 01:12:27	14.31667		933.67	141.37	
2002.10.08 @ 01:55:57	15.04167		935.00	141.41	
2002.10.08 @ 02:39:27	15.76667		936.55	141.44	
2002.10.08 @ 03:22:57	16.49167		938.12	141.48	
2002.10.08 @ 04:06:27	17.21667		939.48	141.51	
2002.10.08 @ 04:49:57	17.94167		941.20	141.55	
2002.10.08 @ 05:33:27	18.66667		941.84	141.57	
2002.10.08 @ 06:16:57	19.39167		942.53	141.61	
2002.10.08 @ 07:00:27	20.11667		943.65	141.63	
2002.10.08 @ 07:43:57	20.84167		944.47	141.65	
2002.10.08 @ 08:27:27	21.56667		946.83	141.69	
2002.10.08 @ 09:10:57	22.29167		948.58	141.72	
2002.10.08 @ 09:54:27	23.01667		950.10	141.76	
2002.10.08 @ 10:37:57	23.74167		951.84	141.77	
2002.10.08 @ 11:21:27	24.46667		953.24	141.79	
2002.10.08 @ 12:04:57	25.19167		953.75	141.81	
2002.10.08 @ 12:48:27	25.91667		954.56	141.82	
2002.10.08 @ 13:31:57	26.64167		954.89	141.84	
2002.10.08 @ 14:15:27	27.36667		955.92	141.87	
2002.10.08 @ 14:58:57	28.09167		956.90	141.89	
2002.10.08 @ 15:42:27	28.81667		957.59	141.91	
2002.10.08 @ 16:25:57	29.54167		958.25	141.93	
2002.10.08 @ 17:09:27	30.26667		958.70	141.95	
2002.10.08 @ 17:52:57	30.99167		958.90	141.96	
2002.10.08 @ 18:36:27	31.71667		959.47	141.98	
2002.10.08 @ 19:19:57	32.44167		960.54	142.01	
2002.10.08 @ 20:03:27	33.16667		961.06	142.01	
2002.10.08 @ 20:46:57	33.89167		962.53	142.03	
2002.10.08 @ 21:30:27	34.61667		963.37	142.05	
2002.10.08 @ 22:13:57	35.34167		964.18	142.07	
2002.10.08 @ 22:57:27	36.06667		965.39	142.08	
2002.10.08 @ 23:40:57	36.79167		965.97	142.09	
2002.10.09 @ 00:24:27	37.51667		966.86	142.12	
2002.10.09 @ 01:07:57	38.24167		967.57	142.12	

Printing every 87 samples

Serial # 6528					
Actual Time (Date/Time)	Relative Time (Hours)	Depth (ft)	Pressure (psig)	Temperature (deg F)	Comments
2002.10.09 @ 01:51:27	38.96667		968.34	142.15	
2002.10.09 @ 02:34:57	39.69167		968.99	142.16	
2002.10.09 @ 03:18:27	40.41667		969.82	142.17	
2002.10.09 @ 04:01:57	41.14167		970.91	142.18	
2002.10.09 @ 04:45:27	41.86667		972.17	142.20	
2002.10.09 @ 05:28:57	42.59167		973.10	142.22	
2002.10.09 @ 06:12:27	43.31667		974.23	142.25	
2002.10.09 @ 06:55:57	44.04167		975.07	142.26	
2002.10.09 @ 07:39:27	44.76667		975.79	142.26	
2002.10.09 @ 08:22:57	45.49167		976.74	142.27	
2002.10.09 @ 09:06:27	46.21667		978.23	142.29	
2002.10.09 @ 09:49:57	46.94167		979.22	142.30	
2002.10.09 @ 10:33:27	47.66667		979.92	142.33	
2002.10.09 @ 11:16:57	48.39167		981.14	142.34	
2002.10.09 @ 12:00:27	49.11667		982.60	142.34	
2002.10.09 @ 12:43:57	49.84167		983.38	142.34	
2002.10.09 @ 13:27:27	50.56667		984.11	142.35	
2002.10.09 @ 14:10:57	51.29167		984.77	142.38	
2002.10.09 @ 14:54:27	52.01667		985.50	142.39	
2002.10.09 @ 15:37:57	52.74167		986.31	142.39	
2002.10.09 @ 16:21:27	53.46667		987.85	142.42	
2002.10.09 @ 17:04:57	54.19167		988.70	142.43	
2002.10.09 @ 17:48:27	54.91667		989.43	142.42	
2002.10.09 @ 18:31:57	55.64167		990.36	142.45	
2002.10.09 @ 19:15:27	56.36667		990.96	142.45	
2002.10.09 @ 19:58:57	57.09167		991.75	142.47	
2002.10.09 @ 20:42:27	57.81667		992.61	142.48	
2002.10.09 @ 21:25:57	58.54167		993.21	142.49	
2002.10.09 @ 22:09:27	59.26667		993.86	142.49	
2002.10.09 @ 22:52:57	59.99167		994.93	142.50	
2002.10.09 @ 23:36:27	60.71667		995.83	142.51	
2002.10.10 @ 00:19:57	61.44167		997.41	142.53	
2002.10.10 @ 01:03:27	62.16667		998.01	142.53	
2002.10.10 @ 01:46:57	62.89167		998.81	142.54	
2002.10.10 @ 02:30:27	63.61667		999.56	142.55	
2002.10.10 @ 03:13:57	64.34167		1000.27	142.56	
2002.10.10 @ 03:57:27	65.06667		1000.98	142.57	
2002.10.10 @ 04:40:57	65.79167		1001.74	142.58	
2002.10.10 @ 05:24:27	66.51667		1002.55	142.59	
2002.10.10 @ 05:59:37	67.10278		1003.10	142.61	
2002.10.10 @ 06:14:07	67.34445		1003.32	142.60	
Printing every 87 samples					

Serial # 6528

Actual Time (Date/Time)	Relative Time (Hours)	Depth (ft)	Pressure (psig)	Temperature (deg F)	Comments
2002.10.10 @ 06:28:37	67.58611		1003.69	142.60	
2002.10.10 @ 06:43:07	67.82778		1003.98	142.60	
2002.10.10 @ 06:57:37	68.06945		1004.07	142.61	
2002.10.10 @ 07:12:07	68.31111		1004.37	142.60	
2002.10.10 @ 07:26:37	68.55278		1004.58	142.60	
2002.10.10 @ 07:41:07	68.79444		1004.79	142.60	
2002.10.10 @ 07:55:37	69.03611		1005.04	142.61	
2002.10.10 @ 08:10:07	69.27778		1005.13	142.62	
2002.10.10 @ 08:24:37	69.51944		1005.37	142.64	
2002.10.10 @ 08:39:07	69.76111		1005.67	142.63	
2002.10.10 @ 08:53:37	70.00278		1005.98	142.62	
2002.10.10 @ 09:08:07	70.24444		1006.21	142.64	
2002.10.10 @ 09:22:37	70.48611		1006.49	142.63	
2002.10.10 @ 09:37:07	70.72778		1006.78	142.64	
2002.10.10 @ 09:51:37	70.96944		1007.08	142.63	
2002.10.10 @ 10:06:07	71.21111		1007.24	142.64	
2002.10.10 @ 10:20:37	71.45278		1007.45	142.63	
2002.10.10 @ 10:35:07	71.69444		1007.83	142.64	
2002.10.10 @ 10:49:37	71.93611		1008.16	142.65	
2002.10.10 @ 11:04:07	72.17778		1008.44	142.66	
2002.10.10 @ 11:18:37	72.41944		1008.73	142.67	
2002.10.10 @ 11:33:07	72.66111		1008.93	142.65	
2002.10.10 @ 11:47:37	72.90278		1009.17	142.67	
2002.10.10 @ 12:02:07	73.14444		617.39	123.65	
2002.10.10 @ 12:16:37	73.38611		568.50	95.27	
2002.10.10 @ 12:31:07	73.62778		515.34	65.61	
2002.10.10 @ 12:45:37	73.86944		746.65	135.15	
2002.10.10 @ 13:00:07	74.11111		878.78	143.70	
2002.10.10 @ 13:14:37	74.35278		942.26	143.89	
2002.10.10 @ 13:29:07	74.59444		930.85	144.26	
2002.10.10 @ 13:43:37	74.83611		654.04	143.68	
2002.10.10 @ 13:58:07	75.07778		558.90	144.36	
2002.10.10 @ 14:12:37	75.31944		379.07	144.40	
2002.10.10 @ 14:27:07	75.56111		438.20	144.45	
2002.10.10 @ 14:41:37	75.80278		374.65	143.99	
2002.10.10 @ 14:56:07	76.04444		232.36	118.02	
2002.10.10 @ 15:10:37	76.28611		39.39	73.32	
2002.10.10 @ 15:22:37	76.48611		-1.99	80.85	

Printing every 87 samples

Company: GLB

Address:

Wellname: Osborne

Legal: Sec: Twp: Rge:

Formation: Muss Field/Pool: CONNIE SW County: St: K

Casing size: Feet of: Wt: Meter run size: SI: 410

Tubing Size: Feet of: Wt: Orif (in): 95% 389

TD: Plugged back depth: Packer depth: 90% 369

Type Test: 4pk Tap Type: Gravity: 85% 348

Type Completion: submergence Producing through: tubing 80% 328

Date	Clk Tim	Tbg Pres	Csg Pres	Diff	Temp	Static/Prover	Wat Vol1	Oil Vol	Comment
mm/dd	clock	psi	psi	in of H2O	F	PSIA	inch	inch	
10/17	10:54								10:54 bottom
	11:15								1000
	11:28								2000
	11:37	174							3000
	11:45								4000
	11:50								4420
	12:05								SI
	12:10	350							
10/10	11:45	595							
	11:56								4000
	12:01							3000	4000
	12:13							2000	
	12:20							1000	
	12:28	516					4	Surface	
	13:26	410							
	13:35								
	13:40	271			69.1	51.4			
	13:47								
	14:00	12							dumping fluid

Flooding

Static

Date	Miles	Name	Date	Miles	Name	Date	Miles	Name
10/17	75	PJ						
10/10	75	SW						

450 8/28