

ORIGINAL

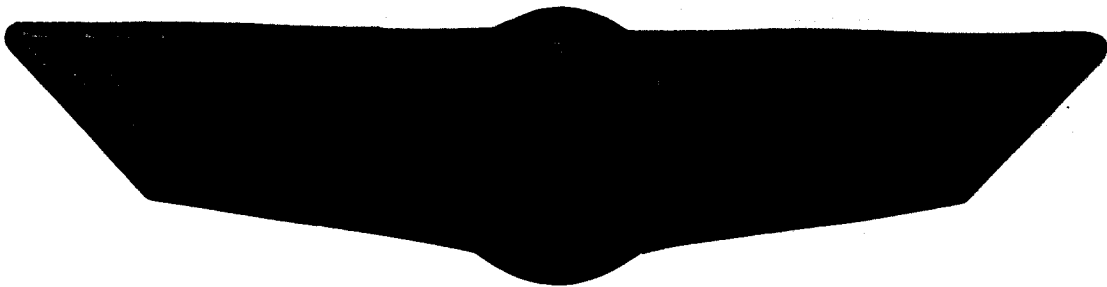
FORMATION

TEST

REPORT

KCC

JUL 12 1995



Home Office:

Wichita, Kansas 67201

P.O. Box 1599

Phone 1-800-688-7021

COMPANY OIL PRODUCERS OF KS, INC. LEASE & WELL NO. ALEXANDER B #2 SEC. 7 TWP. 33S RGE. 12W TEST NO. 1 DATE 6/5/94

API # 15-007-22442

ORIGINAL

DST REPORT

GENERAL INFORMATION

DATE : 6/5/94	TICKET : 20594
CUSTOMER : OIL PRODUCERS OF KS, INC	LEASE : ALEXANDER B
WELL : #2 TEST: 1	GEOLOGIST: SHEPHERD
ELEVATION: 1660 KB	FORMATION: SNYDERVILLE SAND
SECTION : 7	TOWNSHIP : 33S
RANGE : 12W COUNTY: BARBER	STATE : KS
GAUGE SN#: 13268 RANGE : 4225	CLOCK : 12

WELL INFORMATION

PERFORATION INTERVAL FROM: 3797.00 ft TO: 3840.00 ft TVD: 3840.0 ft
 DEPTH OF SELECTIVE ZONE: TEST TYPE: OIL
 DEPTH OF RECORDERS: 3802.0 ft 3805.0 ft
 TEMPERATURE: 107.0

DRILL COLLAR LENGTH: 538.0 ft	I.D.:	2.250 in
WEIGHT PIPE LENGTH : 0.0 ft	I.D.:	0.000 in
DRILL PIPE LENGTH : 3239.0 ft	I.D.:	3.800 in
TEST TOOL LENGTH : 20.0 ft	TOOL SIZE :	5.500 in
ANCHOR LENGTH : 43.0 ft	ANCHOR SIZE:	5.500 in
SURFACE CHOKE SIZE : 0.750 in	BOTTOM CHOKE SIZE:	0.750 in
MAIN HOLE SIZE : 7.875 in	TOOL JOINT SIZE :	4.5XH
PACKER DEPTH: 3792.0 ft	SIZE:	6.630 in
PACKER DEPTH: 3797.0 ft	SIZE:	6.630 in
PACKER DEPTH: 0.0 ft	SIZE:	0.000 in
PACKER DEPTH: 0.0 ft	SIZE:	0.000 in

MUD INFORMATION

DRILLING CON. : DUKE DRLG RIG 5	VISCOSITY : 52.00 cp
MUD TYPE : CHEMICAL	WATER LOSS: 12.000 cc
WEIGHT : 9.000 ppg	SERIAL NUMBER: ..
CHLORIDES : 0 ppm	REVERSED OUT?: NO
JARS-MAKE :	
DID WELL FLOW?: NO	

COMMENTS

Comment

STRONG BLOW ON BOTH INITIAL AND FINAL FLOW PERIOD.
NO GAS TO SURFACE.

DST REPORT (CONTINUED)

FLUID RECOVERY

<u>Feet of Fluid</u>	<u>% Oil</u>	<u>% Gas</u>	<u>% Water</u>	<u>% Mud</u>	<u>Comments</u>
70.0	0.0	0.0	0.0	100.0	DRILLING MUD

RATE INFORMATION

OIL VOLUME:	0.0000	STB	TOTAL FLOW TIME:	65.0000	min.
GAS VOLUME:	0.0000	SCF	AVERAGE OIL RATE:	0.0000	STB/D
MUD VOLUME:	0.3442	STB	AVERAGE WATER RATE:	0.0000	STB/D
WATER VOLUME:	0.0000	STB			
TOTAL FLUID :	0.3442	STB			

FIELD TIME & PRESSURE INFORMATION

INITIAL HYDROSTATIC PRESSURE: 1900.00

<u>Description</u>	<u>Duration</u>	<u>p1</u>	<u>p End</u>
INITIAL FLOW	30.00	74.00	74.00
INITIAL SHUT-IN	30.00		320.00
FINAL FLOW	30.00	85.00	85.00
FINAL SHUT-IN	60.00		746.00

FINAL HYDROSTATIC PRESSURE: 1909.00

OFFICE TIME & PRESSURE INFORMATION

INITIAL HYDROSTATIC PRESSURE: 1913.00

<u>Description</u>	<u>Duration</u>	<u>p1</u>	<u>p End</u>
INITIAL FLOW	30.00	79.00	79.00
INITIAL SHUT-IN	30.00		320.00
FINAL FLOW	35.00	87.00	87.00
FINAL SHUT-IN	66.00		738.00

FINAL HYDROSTATIC PRESSURE: 1850.00

PRESSURE TRANSIENT REPORT

GENERAL INFORMATION

DATE : 6/5/94	TICKET : 20594
CUSTOMER : OIL PRODUCERS OF KS, INC	LEASE : ALEXANDER B
WELL : #2	TEST: 1
ELEVATION: 1660 KB	GEOLOGIST: SHEPHERD
SECTION : 7	FORMATION: SNYDERVILLE SAND
RANGE : 12W	TOWNSHIP : 33S
COUNTY: BARBER	STATE : KS
RANGE : 4225	CLOCK : 12
GAUGE SN#: 13268	

INITIAL FLOW

<u>Time (min)</u>	<u>Pressure</u>	<u>Delta P</u>
0.00	79.00	79.00
5.00	79.00	0.00
10.00	79.00	0.00
15.00	79.00	0.00
20.00	79.00	0.00
25.00	79.00	0.00
30.00	79.00	0.00

INITIAL SHUT IN

<u>Time (min)</u>	<u>Pressure</u>	<u>Delta P</u>	<u>Horner T</u>
3.00	84.00	84.00	11.00
6.00	102.00	18.00	6.00
9.00	128.00	26.00	4.33
12.00	164.00	36.00	3.50
15.00	196.00	32.00	3.00
18.00	224.00	28.00	2.67
21.00	260.00	36.00	2.43
24.00	292.00	32.00	2.25
27.00	316.00	24.00	2.11
30.00	320.00	4.00	2.00

FINAL FLOW

<u>Time (min)</u>	<u>Pressure</u>	<u>Delta P</u>
0.00	87.00	87.00

PRESSURE TRANSIENT REPORT (CONTINUED)

FINAL FLOW (CONTINUED)

<u>Time (min)</u>	<u>Pressure</u>	<u>Delta P</u>
5.00	87.00	0.00
10.00	87.00	0.00
15.00	87.00	0.00
20.00	87.00	0.00
25.00	87.00	0.00
30.00	87.00	0.00
35.00	87.00	0.00

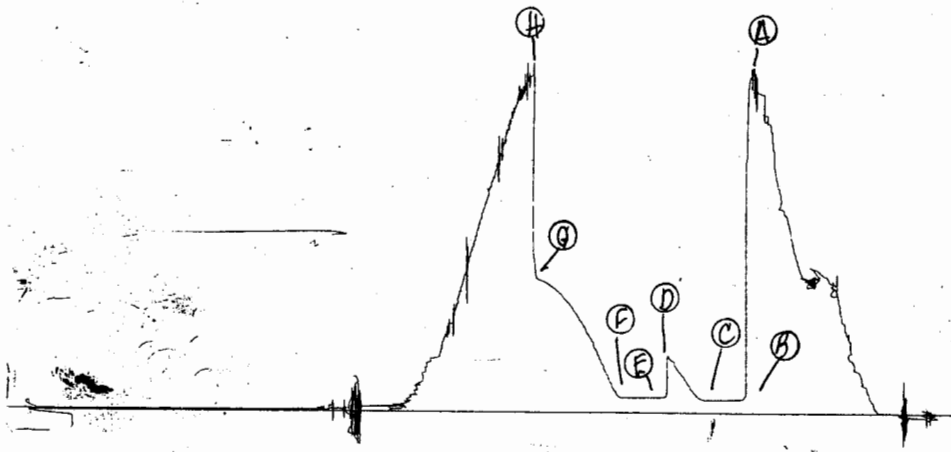
FINAL SHUT IN

<u>Time (min)</u>	<u>Pressure</u>	<u>Delta P</u>	<u>Horner T</u>
3.00	91.00	91.00	21.00
6.00	117.00	26.00	11.00
9.00	158.00	41.00	7.67
12.00	211.00	53.00	6.00
15.00	267.00	56.00	5.00
18.00	299.00	32.00	4.33
21.00	344.00	45.00	3.86
24.00	395.00	51.00	3.50
27.00	431.00	36.00	3.22
30.00	474.00	43.00	3.00
33.00	508.00	34.00	2.82
36.00	540.00	32.00	2.67
39.00	568.00	28.00	2.54
42.00	602.00	34.00	2.43
45.00	625.00	23.00	2.33
48.00	653.00	28.00	2.25
51.00	674.00	21.00	2.18
54.00	691.00	17.00	2.11
57.00	704.00	13.00	2.05
60.00	720.00	16.00	2.00
63.00	729.00	9.00	1.95
66.00	738.00	9.00	1.91

13268 DST#1

☆

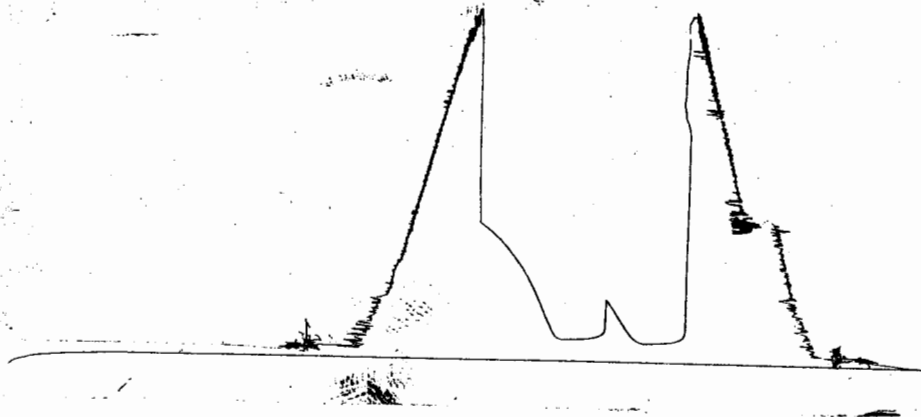
TEL# 20594
I.



Inside Recorder

4332 DST#1

TEL# 20594
O.

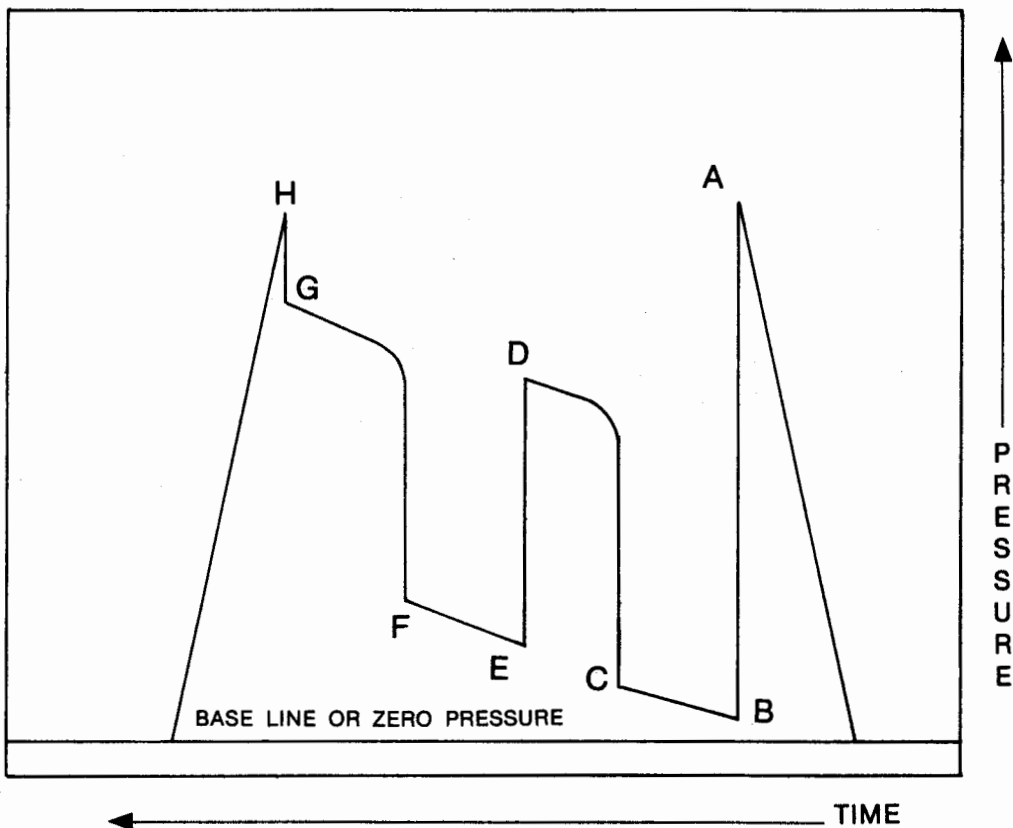


Outside Recorder

COMPANY TERMS

Western Testing Co., Inc. shall not be liable for damages of any kind to the property or personnel of the one for whom a test is made or for any loss suffered or sustained directly or indirectly through the use of its equipment, of its statements or opinion concerning the results of any test. Tools lost or damaged in the hole shall be paid at cost by the party for whom the test is made.

AK-1 Recorders



A - Initial Hydrostatic

B - First Initial Flow

C - First Final Flow

D - Initial Shut-In

E - Second Initial Flow

F - Second Final Flow

G - Final Shut-In

H - Final Hydrostatic