

Flow Time	1st	Min.	2nd	Min.	Date	Ticket Number	407744 S	
Closed In Press. Time	1st	Min.	2nd	Min.	Kind of Job	Halliburton District	LIBERAL	
Pressure Readings	Field			Office Corrected	Tester	Witness D. SOLE		
Depth Top Gauge	5220 Ft.		Blanked Off no		Drilling Contractor	LOHMAN & JOHNSON DRILLING COMPANY		LC
BT. P.R.D. No.	514		12 Hour Clock		Elevation	3450' KB		Top Packer -
Initial Hydro Mud Pressure	2603		2467		Total Depth	5290'		Bottom Packer 5230'
Initial Closed in Pres.	-		-		Interval Tested	5230' - 5290'		Formation Tested Morrow
Initial Flow Pres.	1		329		Casing or Hole Size	7 7/8"		Casing Perfs. } Top Bot.
	346		2					
Final Flow Pres.	1		835		Surface Choke	1"		Bottom Choke 3/4"
	846		2					
Final Closed in Pres.	1060		1041		Size & Kind Drill Pipe	4 1/2" FH		Drill Collars Above Tester I.D. - LENGTH 2 1/2" - 413'
Final Hydro Mud Pressure	2603		2357		Mud Weight	9.1		Mud Viscosity 45
Depth Cen. Gauge	Ft.		Blanked Off		Temperature	118		Anchor Size & Length ID 2.875" OD 5" X 60'
BT. P.R.D. No.			Hour Clock		Depths Mea. From	Kelly Bushing		Depth of Tester Valve 5219' Ft.
Initial Hydro Mud Pres.					Cushion	-		Depth Back Pres. Valve - Ft.
Initial Closed in Pres.					Recovered	2173 Feet of salt water.		Mea. From Tester Valve
Initial Flow Pres.	1				Recovered	Feet of		
	2							
Final Flow Pres.	1				Recovered	Feet of		
	2							
Final Closed in Pres.					Recovered	Feet of		
Final Hydro Mud Pres.					Oil A.P.I. Gravity	=-		Water Spec. Gravity 1.050
Depth Bot. Gauge	5287 Ft.		Blanked Off yes		Gas Gravity	-		Surface Pressure - psi
BT. P.R.D. No.	376		12 Hour Clock		Tool Opened	4:30 A.M.		Tool Closed 5:30 A.M. A.M. P.M.
Initial Hydro Mud Pres.	2998		2510		Remarks	Opened tool with fair blow increasing to		
Initial Closed in Pres.	-		-		strong blow in 5 minutes of 60 minute flow. Took			
Initial Flow Pres.	1		292		a 30 minute closed in pressure.			
	419		2					
Final Flow Pres.	1		867					
	863		2					
Final Closed in Pres.	1091		1074					
Final Hydro Mud Pres.	2598		2493					

Legal Location Sec. - Twp. - Rng. G SW NE 13 33S 42W
 Lease Name
 Well No.
 Test No.
 Field Area
 WIDCAG
 County MORTON
 State KANSAS

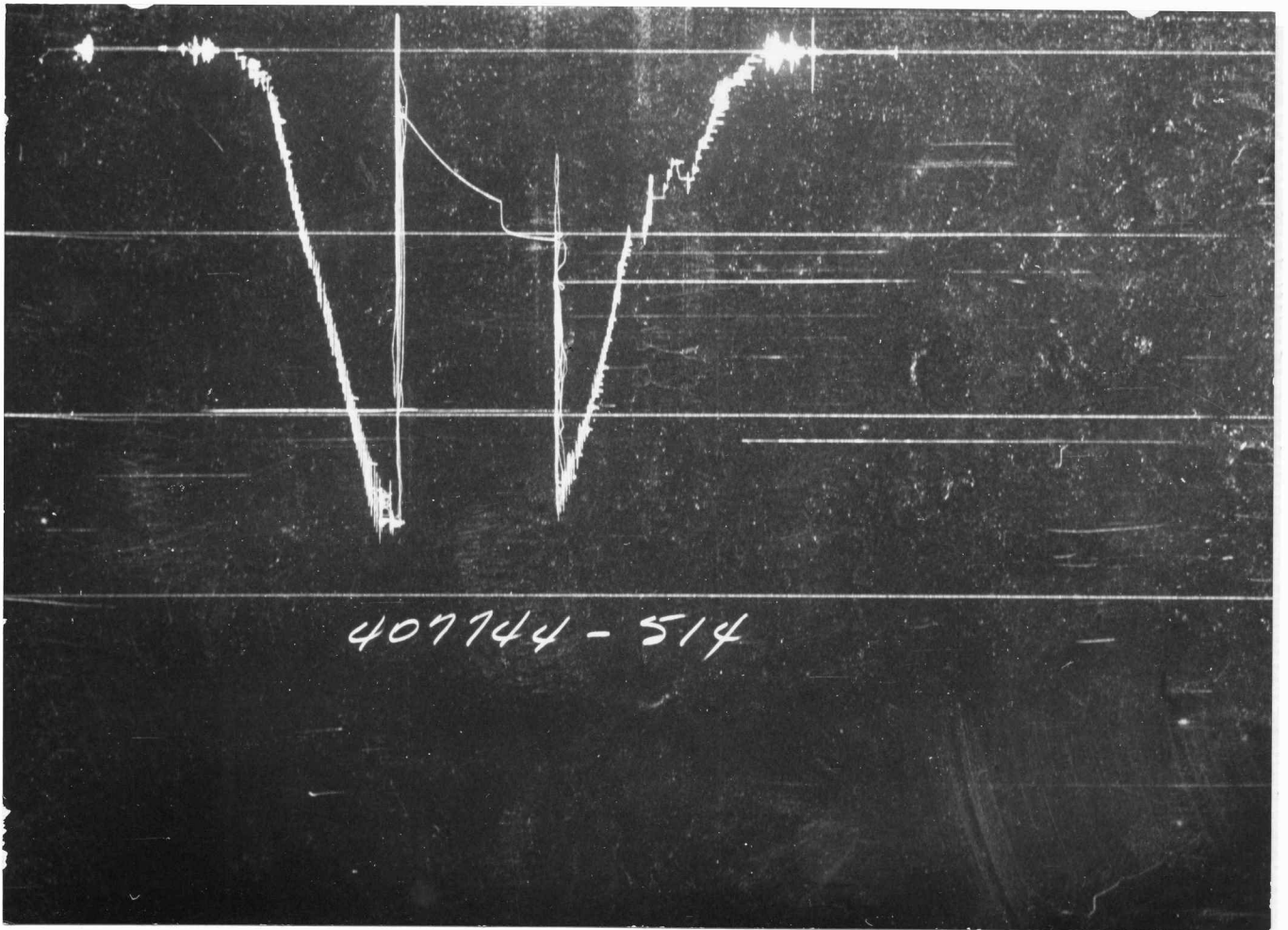
MINOR
 B-1
 CITIES SERVICE OIL COMPANY
 Lease Owner/Company Name
 EICKHART
 Owner's District

FORMATION TEST DATA

5

Gauge No. 514		Depth 5220'			Clock 12 hour		Ticket No. 407744		
First Flow Period		Initial Closed In Pressure			Second Flow Period		Final Closed In Pressure		
Time Defl. .000"	PSIG Temp. Corr.	Time Defl. .000"	Log $\frac{t+\theta}{e}$	PSIG Temp. Corr.	Time Defl. .000"	PSIG Temp. Corr.	Time Defl. .000"	Log $\frac{t+\theta}{e}$	PSIG Temp. Corr.
P ₀					.000	329	.000		835
P ₁					.1005	507	.0212		993
P ₂					.2010	657	.0424		1007
P ₃					.3015	762	.0636		1016
P ₄					.4020	835	.0848		1021
P ₅							.1060		1026
P ₆							.1272		1030
P ₇							.1484		1034
P ₈							.1696		1037
P ₉							.1908		1039
P ₁₀							.2120		1041
Gauge No. 376		Depth 5287'			Clock 12 hour				
P ₀					.000	292	.000		867
P ₁					.103	531	.0212		1026
P ₂					.206	683	.0424		1040
P ₃					.309	793	.0636		1049
P ₄					.412	867	.0848		1054
P ₅							.1060		1059
P ₆							.1272		1064
P ₇							.1484		1067
P ₈							.1606		1070
P ₉							.1908		1073
P ₁₀							.2120		1074
Reading Interval					15		3 Minutes		
REMARKS:									

SPECIAL PRESSURE DATA



Each Horizontal Line Equal to 1000 p.s.i.